

Table X-1

KAPOSI'S SARCOMANUMBER OF CASES

By SEER Location and Year of Diagnosis, 1973-95

All Races, Males, All Ages

Year of Diagnosis

SEER Location	1973-79	1980	1981	1982	1983	1984	1985	1986	1987	1988	1989	1990	1991	1992	1993	1994	1995
All Areas [⊕]	174	35	44	109	217	367	518	724	854	1016	1114	1103	1134	1079	974	928	784
All Areas Excluding SF-Oakland SMSA	130	24	21	35	50	104	153	197	232	353	418	425	412	491	477	428	403
San Francisco-Oakland SMSA	44	11	23	74	167	263	365	527	622	663	696	678	722	588	497	500	381
San Francisco City/County	17	6	14	61	140	226	313	442	514	547	534	527	570	432	364	363	283

AGE-ADJUSTED CANCER INCIDENCE RATES[§]

By SEER Location and Year of Diagnosis, 1973-95

All Races, Males, All Ages

Year of Diagnosis

SEER Location	1973-79	1980	1981	1982	1983	1984	1985	1986	1987	1988	1989	1990	1991	1992	1993	1994	1995
All Areas [⊕]	0.3	0.4	0.4	0.9	1.7	2.8	3.8	5.1	6.0	6.9	7.5	7.2	7.4	6.9	6.1	5.8	4.9
All Areas Excluding SF-Oakland SMSA	0.3	0.3	0.3	0.4	0.5	1.0	1.4	1.7	2.0	3.0	3.4	3.4	3.2	3.8	3.6	3.2	3.0
San Francisco-Oakland SMSA	0.5	0.7	1.3	3.5	7.4	11.5	15.7	21.7	25.5	26.1	27.3	25.9	27.9	22.5	18.6	19.1	14.4
San Francisco City/County	0.6	1.5	3.3	12.4	26.8	43.1	59.4	79.9	92.9	97.9	97.5	94.8	104.2	79.5	66.0	67.9	52.6

[§] SEER Program. Rates are per 100,000 males and are age-adjusted to the 1970 U.S. standard population. Each rate has been age-adjusted by 5-year age groups.

[⊕] All Areas refers to all SEER data collection areas. The San Francisco-Oakland SMSA represents 15% of all persons in the SEER areas. For this age group, all SEER areas may not be generalizable to the United States for Kaposi's Sarcoma.

Table X-2

KAPOSI'S SARCOMANUMBER OF CASES

By SEER Location and Year of Diagnosis, 1973-95

All Races, Males, Ages 20-54

Year of Diagnosis

SEER Location	1973-79	1980	1981	1982	1983	1984	1985	1986	1987	1988	1989	1990	1991	1992	1993	1994	1995
All Areas [⊕]	18	5	20	75	178	328	476	683	800	946	1047	1042	1066	999	918	875	716
All Areas Excluding SF-Oakland SMSA	14	<4	4	9	25	78	128	174	204	311	379	390	377	458	443	407	361
San Francisco-Oakland SMSA	4	4	16	66	153	250	348	509	596	635	668	652	689	541	475	468	355
San Francisco City/County	<4	4	13	59	134	219	300	429	496	528	517	511	548	401	351	342	267

AGE-ADJUSTED CANCER INCIDENCE RATES[§]

By SEER Location and Year of Diagnosis, 1973-95

All Races, Males, Ages 20-54

Year of Diagnosis

SEER Location	1973-79	1980	1981	1982	1983	1984	1985	1986	1987	1988	1989	1990	1991	1992	1993	1994	1995
All Areas [⊕]	0.1	0.1	0.4	1.3	3.0	5.6	7.9	11.0	12.7	14.5	15.9	15.5	15.7	14.2	13.0	12.4	9.9
All Areas Excluding SF-Oakland SMSA	0.1	-	0.1	0.2	0.5	1.6	2.5	3.3	3.8	5.7	6.8	6.9	6.5	7.8	7.5	6.9	6.0
San Francisco-Oakland SMSA	0.1	0.5	1.9	6.9	15.0	24.8	34.1	47.6	55.5	56.5	59.3	56.4	60.0	45.2	40.1	39.7	29.9
San Francisco City/County	-	2.4	7.2	27.7	58.5	96.0	129.6	177.1	204.3	215.1	214.2	209.1	227.3	162.6	144.8	143.2	111.3

[§] SEER Program. Rates are per 100,000 males aged 20-54 and are age-adjusted to the 1970 U.S. standard population. Each rate has been age-adjusted by 5-year age groups.

[⊕] All Areas refers to all SEER data collection areas. The San Francisco-Oakland SMSA represents 15% of all persons in the SEER areas. For this age group, all SEER areas may not be generalizable to the United States for Kaposi's Sarcoma.

Table X-3

KAPOSI'S SARCOMANUMBER OF CASES

By SEER Location and Year of Diagnosis, 1973-95

All Races, Males, Ages 55+

Year of Diagnosis

SEER Location	1973-79	1980	1981	1982	1983	1984	1985	1986	1987	1988	1989	1990	1991	1992	1993	1994	1995
All Areas⊕	156	30	24	34	39	38	42	39	54	69	66	61	68	79	56	53	68
All Areas Excluding SF-Oakland SMSA	116	23	17	26	25	26	25	22	28	42	39	35	35	32	34	21	42
San Francisco-Oakland SMSA	40	7	7	8	14	12	17	17	26	27	27	26	33	47	22	32	26
San Francisco City/County	16	<4	<4	<4	6	7	13	13	18	19	16	16	22	31	13	21	16

AGE-ADJUSTED CANCER INCIDENCE RATES§

By SEER Location and Year of Diagnosis, 1973-95

All Races, Males, Ages 55+

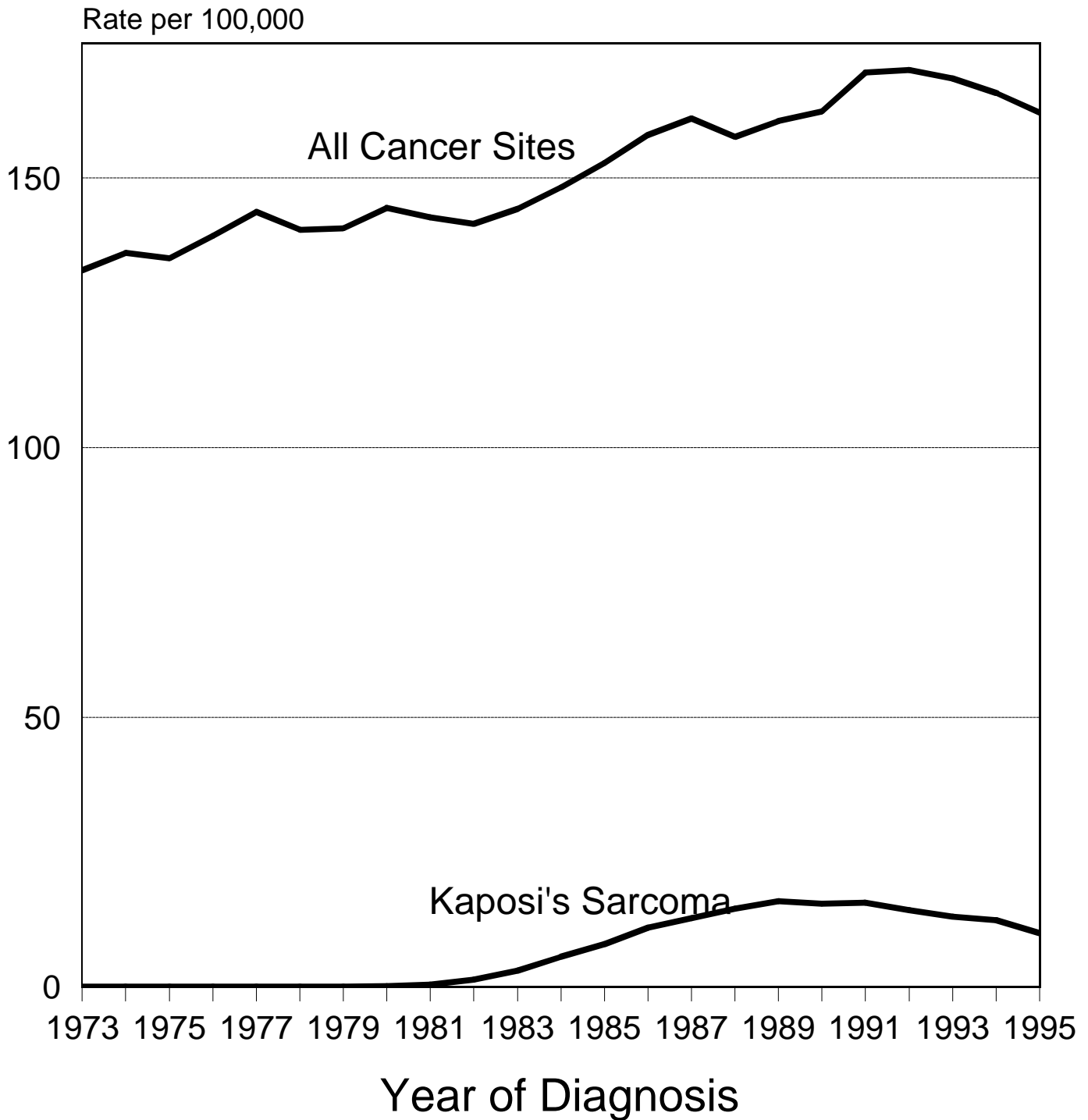
Year of Diagnosis

SEER Location	1973-79	1980	1981	1982	1983	1984	1985	1986	1987	1988	1989	1990	1991	1992	1993	1994	1995
All Areas⊕	1.5	1.8	1.4	1.9	2.1	2.0	2.2	2.0	2.7	3.5	3.4	3.0	3.4	4.1	2.7	2.6	3.2
All Areas Excluding SF-Oakland SMSA	1.3	1.6	1.2	1.7	1.6	1.7	1.6	1.3	1.7	2.5	2.4	2.0	2.1	1.9	1.9	1.2	2.3
San Francisco-Oakland SMSA	2.3	2.7	2.4	2.7	4.8	4.0	5.4	5.5	8.3	8.6	8.9	8.4	10.8	15.7	6.9	10.4	8.3
San Francisco City/County	2.9	-	-	-	8.4	9.0	18.7	19.0	25.7	27.5	24.7	24.4	32.8	49.6	18.8	32.5	24.4

§ SEER Program. Rates are per 100,000 males aged 55+ and are age-adjusted to the 1970 U.S. standard population. Each rate has been age-adjusted by 5-year age groups.

⊕ All Areas refers to all SEER data collection areas. The San Francisco-Oakland SMSA represents 15% of all persons in the SEER areas. For this age group, all SEER areas may not be generalizable to the United States for Kaposi's Sarcoma.

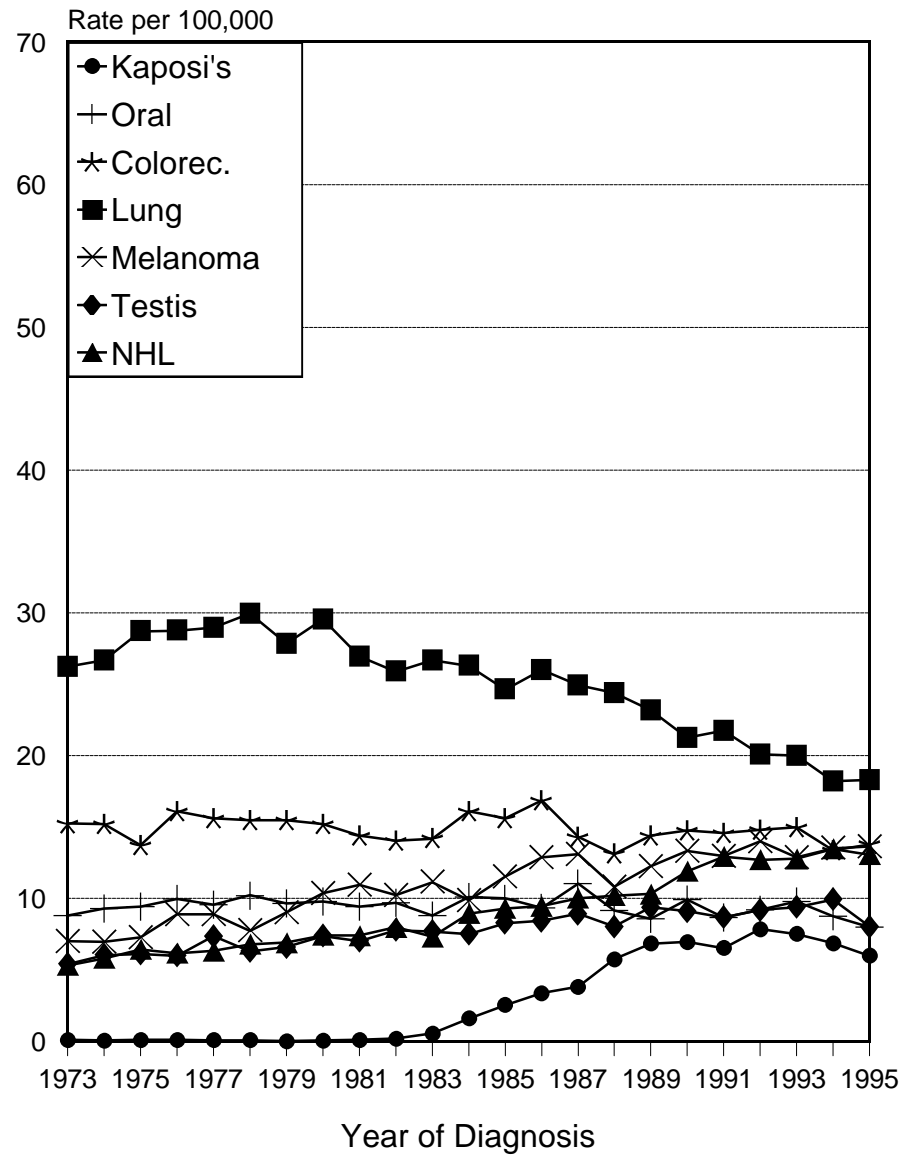
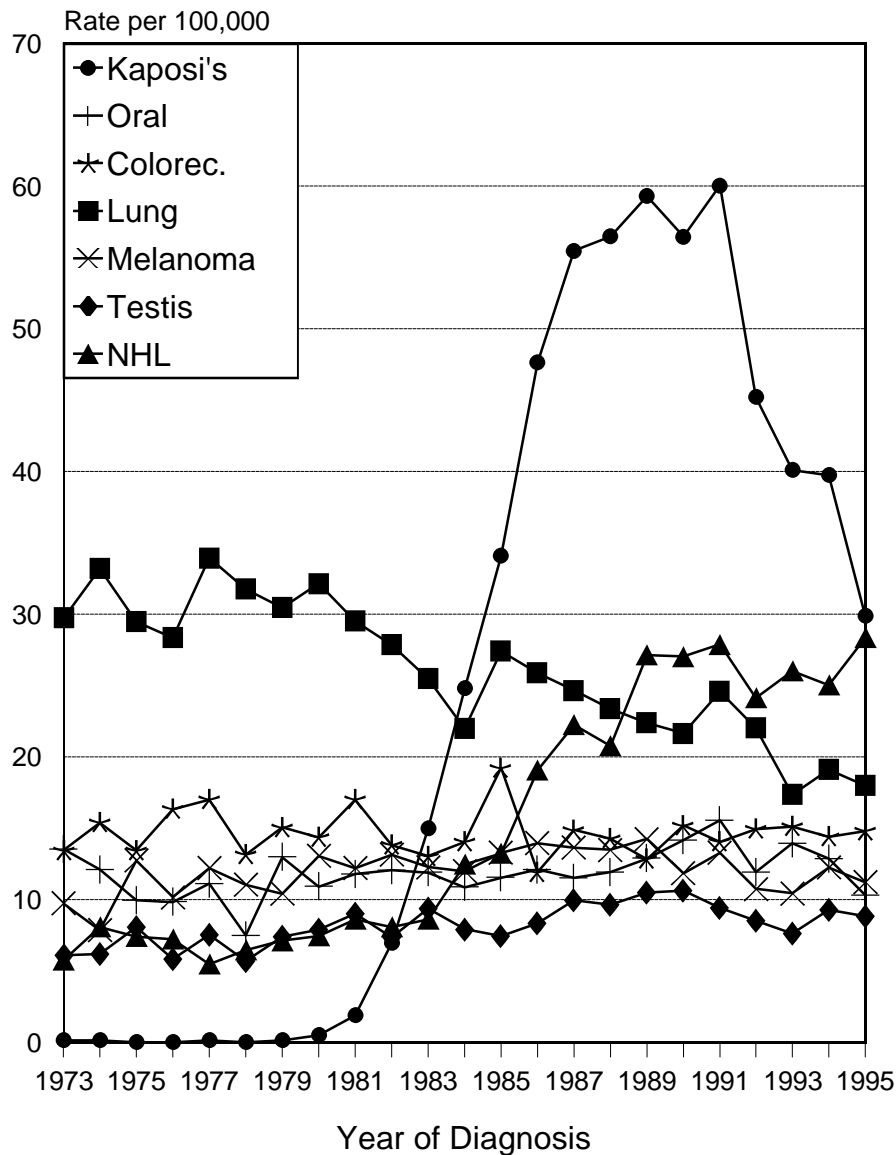
All Cancer Sites vs. Kaposi's Sarcoma SEER Incidence Rates, 1973-1995 Males, Ages 20-54



Age-adjusted to 1970 Standard

San Francisco/Oakland Ages 20-54, All Males, 1975-1995

All SEER excluding San Francisco/Oakland Ages 20-54, All Males, 1975-1995



*Kaposi's excluded from Oral, Colorec., Lung, Melanoma, Testis, and NHL.

Figure X-2