

Table IV-1
 FEMALE BREAST CANCER (Invasive)

TRENDS IN SEER INCIDENCE^a AND U.S. MORTALITY^b USING THE JOINPOINT REGRESSION PROGRAM, 1973-1999
 WITH UP TO THREE JOINPOINTS BY RACE AND AGE

	All Races		Whites		Blacks	
	Year	APC	Year	APC	Year	APC
<u>SEER Cancer Incidence^a</u>						
Age - All Ages	1973-80	-0.6	1973-80	-0.5	1973-79	-0.7
	1980-87	3.7★	1980-87	3.8★	1979-86	3.9★
	1987-99	0.5★	1987-99	0.4	1986-99	0.9★
Age - Under 50	1973-80	-1.5	1973-80	-1.4★	1973-91	1.4★
	1980-86	2.9★	1980-86	2.9★	1991-99	-1.1
	1986-99	-0.3	1986-99	-0.4		
Age - 50 and Over	1973-80	-0.3	1973-80	-0.2	1973-78	-1.5
	1980-87	4.1★	1980-87	4.3★	1978-86	4.1★
	1987-99	0.7★	1987-99	0.7★	1986-99	1.3★
<u>U.S. Cancer Mortality^b</u>						
Age - All Ages	1973-79	-0.3	1973-79	-0.3	1973-93	1.3★
	1979-89	0.6★	1979-89	0.5★	1993-99	-1.2★
	1989-95	-1.4★	1989-95	-1.6★		
	1995-99	-3.2★	1995-99	-3.5★		
Age - Under 50	1973-80	-1.5★	1973-79	-1.7★	1973-76	-5.4
	1980-89	0.1	1979-90	-0.4	1976-87	2.0★
	1989-97	-2.7★	1990-97	-3.4★	1987-99	-1.4★
	1997-99	-7.4★	1997-99	-8.2★		
Age - 50 and Over	1973-91	0.5★	1973-90	0.4★	1973-93	1.5★
	1991-99	-2.1★	1990-95	-1.6★	1993-99	-0.8
			1995-99	-3.0★		

The APC is the Annual Percent Change based on rates age-adjusted to the 2000 U.S. standard population by 5-year age groups using the Joinpoint Regression Program.

Trends are from the SEER 9 areas.

Trends are from the NCHS public use data file.

★ The APC is significantly different from zero (p<.05).

^a
^b
 ★

Table IV-2
BREAST CANCER (Invasive)

SEER INCIDENCE RATES, AGE-ADJUSTED AND AGE-SPECIFIC RATES, BY RACE AND SEX

	All Races			Whites			Blacks		
	Total	Males	Females	Total	Males	Females	Total	Males	Females
<u>AGE-ADJUSTED RATES</u>									
<u>YEAR OF DIAGNOSIS:</u>									
1973	54.3	1.2	98.5	55.8	1.2	100.9	46.6	-	82.5
1974	62.2	1.2	113.0	63.6	1.2	115.1	52.5	-	94.8
1975	58.0	0.8	105.0	59.4	0.9	107.2	52.0	-	93.4
1976	56.4	1.1	101.9	58.1	1.1	104.7	47.8	-	84.9
1977	55.9	1.0	100.7	57.4	0.9	103.3	49.4	-	86.6
1978	55.8	0.9	100.5	57.4	0.9	103.4	48.2	-	86.0
1979	56.8	1.0	102.0	58.2	0.9	104.5	49.9	-	87.0
1980	56.8	0.9	102.0	58.4	1.0	104.8	50.6	-	89.4
1981	59.3	1.0	106.3	61.2	0.9	109.8	54.3	-	94.2
1982	59.2	1.0	106.4	61.0	0.9	109.9	53.7	-	93.2
1983	61.8	1.0	111.0	63.6	1.1	114.4	58.8	-	103.3
1984	64.4	0.9	115.8	66.5	0.9	119.8	57.7	-	101.2
1985	69.0	1.0	124.1	70.9	1.0	127.7	64.0	-	111.5
1986	70.4	0.9	126.7	72.2	1.0	130.2	66.0	-	114.6
1987	74.7	1.0	134.4	77.8	1.0	140.2	62.6	-	108.7
1988	73.0	1.2	131.2	75.5	1.2	136.2	68.9	-	118.5
1989	70.7	1.1	127.1	73.2	1.0	132.2	60.7	-	105.4
1990	73.0	1.1	131.5	75.3	1.1	136.2	68.2	-	118.1
1991	73.9	1.1	133.5	76.5	1.2	138.6	67.0	-	116.9
1992	73.0	1.0	132.0	74.7	1.0	135.8	70.8	-	122.7
1993	71.3	1.1	129.2	73.2	1.1	133.4	68.7	-	119.5
1994	72.0	1.1	130.8	74.1	1.1	135.5	70.4	-	122.5
1995	72.7	1.0	132.5	74.9	0.9	137.2	71.8	-	124.4
1996	73.3	1.3	133.6	75.0	1.3	137.6	71.1	-	123.8
1997	75.3	1.2	137.5	77.1	1.2	141.8	71.5	-	124.4
1998	76.8	1.1	140.5	78.6	1.2	144.7	69.7	-	122.3
1999	75.8	1.1	139.1	77.4	1.1	143.0	71.0	-	123.9
<u>AGE-ADJUSTED RATES, 1995-99</u>									
<u>AGE AT DIAGNOSIS:</u>									
All ages	74.8	1.1	136.7	76.6	1.1	140.9	71.0	1.7	123.7
Under 65	46.5	0.5	90.3	46.9	0.5	92.3	47.1	0.7	85.7
65 and over	270.7	5.5	457.4	282.0	5.5	476.8	236.0	8.2	386.6
All ages (world std.) ^ë	52.5	0.7	98.1	53.5	0.7	101.0	50.4	1.0	89.4
<u>AGE-SPECIFIC RATES, 1995-99</u>									
<u>AGE AT DIAGNOSIS:</u>									
0-4	-	-	-	-	-	-	-	-	-
5-9	-	-	-	-	-	-	-	-	-
10-14	-	-	-	-	-	-	-	-	-
15-19	-	-	-	-	-	-	-	-	-
20-24	0.7	-	1.5	0.6	-	1.3	-	-	-
25-29	4.4	-	8.7	4.0	-	8.1	6.9	-	13.0
30-34	13.3	-	26.3	12.7	-	25.5	17.7	-	32.7
35-39	30.1	-	59.8	29.6	-	59.6	34.1	-	63.4
40-44	59.9	-	118.2	59.7	-	119.3	61.1	-	114.0
45-49	101.5	0.9	200.0	101.4	0.8	202.5	105.0	-	194.5
50-54	139.9	1.4	273.0	142.1	1.4	280.8	142.7	-	261.8
55-59	170.3	2.3	328.1	173.1	2.0	338.0	167.3	-	297.3
60-64	196.6	3.7	371.3	202.6	3.9	387.9	179.4	-	313.9
65-69	225.4	3.4	413.5	234.1	3.5	433.6	194.3	-	342.9
70-74	270.1	5.1	476.9	280.8	5.4	497.6	230.5	-	390.7
75-79	295.5	6.3	500.9	308.5	6.2	522.4	264.4	-	434.3
80-84	308.6	8.3	487.7	320.6	7.8	504.3	281.8	-	432.4
85+	285.7	6.5	403.8	299.4	6.4	418.1	237.4	-	338.7

§ SEER 9 areas. Rates are per 100,000 and are age-adjusted to the 2000 U.S. standard population by 5-year age groups, unless noted.

ë SEER 9 areas. Rates are per 100,000 and are age-adjusted to the world standard population.

- Statistic not shown. Rate based on less than 25 cases for the time interval.

Table IV-3
BREAST CANCER (Invasive)U.S. DEATH RATES, AGE-ADJUSTED AND AGE-SPECIFIC RATES^ä, BY RACE AND SEX

	All Races			Whites			Blacks		
	Total	Males	Females	Total	Males	Females	Total	Males	Females
<u>AGE-ADJUSTED RATES</u>									
<u>YEAR OF DEATH:</u>									
1973	18.2	0.4	32.3	18.4	0.4	32.5	17.8	0.6	31.4
1974	18.1	0.4	32.0	18.2	0.4	32.1	18.2	0.7	31.8
1975	17.8	0.4	31.4	18.0	0.4	31.8	16.8	0.4	29.5
1976	18.1	0.4	31.8	18.2	0.4	32.2	17.6	0.6	30.5
1977	18.5	0.4	32.5	18.6	0.4	32.7	18.9	0.5	32.8
1978	18.0	0.4	31.7	18.1	0.3	31.9	18.6	0.6	32.1
1979	17.7	0.3	31.2	17.9	0.3	31.5	17.9	0.5	30.8
1980	18.0	0.3	31.7	18.1	0.3	31.9	18.4	0.4	31.7
1981	18.2	0.3	31.9	18.3	0.3	32.1	19.0	0.5	32.6
1982	18.4	0.3	32.2	18.4	0.3	32.3	19.7	0.6	33.7
1983	18.3	0.3	32.1	18.4	0.3	32.2	19.6	0.5	33.5
1984	18.8	0.3	32.9	18.8	0.3	32.9	21.0	0.5	35.9
1985	18.8	0.3	33.0	18.9	0.3	33.1	20.3	0.4	34.9
1986	18.8	0.3	32.9	18.8	0.3	32.9	20.7	0.4	35.4
1987	18.7	0.3	32.7	18.6	0.3	32.6	21.5	0.5	36.7
1988	19.0	0.3	33.2	18.9	0.3	33.1	22.3	0.9	37.8
1989	19.0	0.3	33.2	18.9	0.3	33.2	21.6	0.5	36.6
1990	18.9	0.3	33.1	18.8	0.3	33.0	22.5	0.5	38.0
1991	18.7	0.3	32.7	18.5	0.3	32.5	22.6	0.4	38.3
1992	18.1	0.3	31.7	17.9	0.3	31.5	21.9	0.4	37.2
1993	18.0	0.4	31.5	17.8	0.3	31.2	22.7	0.7	38.2
1994	17.8	0.4	31.1	17.5	0.3	30.8	22.5	0.6	38.0
1995	17.5	0.4	30.8	17.2	0.3	30.3	22.8	0.8	38.5
1996	17.0	0.3	29.8	16.6	0.3	29.3	22.3	0.7	37.5
1997	16.2	0.3	28.5	15.8	0.3	27.9	22.5	0.6	37.9
1998	15.8	0.3	27.9	15.5	0.3	27.3	21.3	0.5	36.0
1999	15.3	0.3	27.0	14.9	0.3	26.3	21.2	0.7	35.8
<u>AGE-ADJUSTED RATES, 1995-99</u>									
<u>AGE AT DEATH:</u>									
All ages	16.4	0.3	28.8	16.0	0.3	28.2	22.0	0.7	37.1
Under 65	7.9	0.1	15.2	7.4	0.1	14.5	12.5	0.2	22.6
65 and over	74.9	1.9	122.4	75.0	1.8	123.0	87.3	3.6	137.5
All ages (world std.) ^ö	10.4	0.2	19.0	10.1	0.2	18.5	14.7	0.4	25.4
<u>AGE-SPECIFIC RATES, 1995-99</u>									
<u>AGE AT DEATH:</u>									
0-4	-	-	-	-	-	-	-	-	-
5-9	-	-	-	-	-	-	-	-	-
10-14	-	-	-	-	-	-	-	-	-
15-19	-	-	-	-	-	-	-	-	-
20-24	0.1	-	0.1	0.0	-	0.1	-	-	-
25-29	0.5	-	1.0	0.4	-	0.9	1.1	-	2.1
30-34	2.0	-	4.0	1.7	-	3.4	4.1	-	7.7
35-39	4.9	-	9.7	4.4	-	8.7	9.2	-	17.1
40-44	9.1	0.1	17.9	8.3	0.1	16.5	15.9	-	29.7
45-49	15.6	0.1	30.5	14.4	0.1	28.5	26.9	-	49.3
50-54	23.6	0.3	45.6	22.4	0.3	43.7	38.0	0.8	68.1
55-59	30.7	0.5	58.6	29.6	0.5	57.0	45.2	1.1	79.6
60-64	38.1	0.8	71.5	37.3	0.7	70.7	52.4	1.6	90.5
65-69	47.1	1.0	85.8	46.9	0.9	86.2	56.6	1.9	97.5
70-74	60.7	1.3	106.8	60.4	1.2	106.9	76.7	2.7	127.8
75-79	73.5	2.1	123.7	73.7	2.0	124.5	86.5	3.7	138.6
80-84	96.2	2.5	151.0	96.3	2.4	151.4	114.2	5.6	170.7
85+	143.1	4.0	200.0	145.0	3.8	202.0	147.6	7.0	205.8

^ä NCHS public use data file. Rates are per 100,000 and are age-adjusted to the 2000 U.S. standard population by 5-year age groups, unless noted.

^ö NCHS public use data file. Rates are per 100,000 and are age-adjusted to the world standard population.

- Statistic not shown. Rate based on less than 25 cases for the time interval.

Table IV-4
FEMALE BREAST CANCER (Invasive)

SEER INCIDENCES AND U.S. DEATH RATES, AGE-ADJUSTED RATES, BY RACE AND AGE

	All Races, Females			White Females			Black Females		
	All	<50	50+	All	<50	50+	All	<50	50+
<u>SEER INCIDENCE RATES</u>									
<u>YEAR OF DIAGNOSIS:</u>									
1973	98.5	39.1	254.0	100.9	39.8	260.8	82.5	34.8	207.4
1974	113.0	44.6	291.9	115.1	44.6	299.7	94.8	41.0	235.7
1975	105.0	40.5	273.8	107.2	40.7	281.4	93.4	42.1	227.6
1976	101.9	40.0	263.9	104.7	40.9	271.8	84.9	37.8	208.2
1977	100.7	39.0	262.3	103.3	39.4	270.8	86.6	37.1	216.0
1978	100.5	38.7	262.3	103.4	39.1	271.7	86.0	39.9	206.8
1979	102.0	38.0	269.8	104.5	38.5	277.5	87.0	37.9	215.7
1980	102.0	37.7	270.5	104.8	38.1	279.5	89.4	37.7	224.7
1981	106.3	39.1	282.0	109.8	40.1	292.4	94.2	38.7	239.4
1982	106.4	40.5	279.0	109.9	41.2	289.8	93.2	37.9	237.9
1983	111.0	40.1	296.6	114.4	40.8	307.1	103.3	41.1	266.0
1984	115.8	42.3	308.1	119.8	43.1	320.5	101.2	44.1	250.8
1985	124.1	44.2	333.2	127.7	44.4	346.0	111.5	45.2	285.2
1986	126.7	44.4	342.3	130.2	45.0	353.0	114.6	45.0	297.0
1987	134.4	45.4	367.4	140.2	46.5	385.5	108.7	42.7	281.5
1988	131.2	43.9	359.6	136.2	44.9	375.1	118.5	42.9	316.6
1989	127.1	43.3	346.4	132.2	44.4	362.0	105.4	42.6	269.8
1990	131.5	45.5	356.8	136.2	45.5	373.7	118.1	48.8	299.7
1991	133.5	46.9	360.2	138.6	46.9	378.9	116.9	50.6	290.4
1992	132.0	43.4	363.9	135.8	43.7	377.0	122.7	45.9	323.8
1993	129.2	42.6	356.0	133.4	43.1	369.8	119.5	44.8	315.1
1994	130.8	42.2	362.8	135.5	42.4	379.2	122.5	47.4	319.2
1995	132.5	42.9	367.1	137.2	43.2	383.4	124.4	45.5	331.2
1996	133.6	43.4	369.8	137.6	43.5	384.0	123.8	43.6	333.6
1997	137.5	43.2	384.2	141.8	43.5	399.1	124.4	43.7	335.7
1998	140.5	44.9	391.0	144.7	44.6	406.7	122.3	45.4	323.5
1999	139.1	43.0	390.8	143.0	43.6	403.3	123.9	41.9	338.6
1995-99	136.7	43.5	380.8	140.9	43.7	395.5	123.7	44.0	332.4
<u>U.S. DEATH RATES</u>									
<u>YEAR OF DEATH:</u>									
1973	32.3	9.4	92.2	32.5	9.2	93.7	31.4	12.1	82.0
1974	32.0	9.3	91.4	32.1	9.1	92.5	31.8	11.8	84.1
1975	31.4	9.1	89.9	31.8	9.0	91.4	29.5	10.7	78.8
1976	31.8	8.7	92.2	32.2	8.6	93.8	30.5	10.2	83.5
1977	32.5	8.9	94.3	32.7	8.7	95.3	32.8	10.5	91.1
1978	31.7	8.7	92.1	31.9	8.5	93.3	32.1	11.4	86.5
1979	31.2	8.6	90.5	31.5	8.3	92.1	30.8	11.4	81.8
1980	31.7	8.6	92.2	31.9	8.4	93.6	31.7	10.8	86.3
1981	31.9	8.5	93.3	32.1	8.2	94.8	32.6	11.5	87.7
1982	32.2	8.4	94.4	32.3	8.2	95.5	33.7	11.2	92.8
1983	32.1	8.2	94.7	32.2	7.9	95.9	33.5	11.2	92.1
1984	32.9	8.6	96.6	32.9	8.2	97.6	35.9	12.5	97.2
1985	33.0	8.6	96.9	33.1	8.3	98.1	34.9	12.0	94.6
1986	32.9	8.6	96.3	32.9	8.3	97.5	35.4	12.9	94.6
1987	32.7	8.4	96.1	32.6	8.0	96.9	36.7	12.9	99.0
1988	33.2	8.4	98.2	33.1	8.0	98.8	37.8	12.7	103.4
1989	33.2	8.4	98.2	33.2	8.1	99.2	36.6	12.4	100.0
1990	33.1	8.3	98.2	33.0	8.0	98.6	38.0	12.0	106.0
1991	32.7	8.2	97.1	32.5	7.7	97.4	38.3	12.3	106.4
1992	31.7	7.8	94.5	31.5	7.4	94.8	37.2	12.1	102.9
1993	31.5	7.4	94.6	31.2	7.0	94.7	38.2	11.7	107.6
1994	31.1	7.4	93.2	30.8	6.9	93.1	38.0	11.8	106.6
1995	30.8	7.3	92.2	30.3	6.8	91.8	38.5	11.8	108.4
1996	29.8	7.0	89.4	29.3	6.4	89.2	37.5	11.8	104.7
1997	28.5	6.8	85.5	27.9	6.3	84.6	37.9	11.1	107.9
1998	27.9	6.4	84.1	27.3	5.8	83.6	36.0	10.8	102.2
1999	27.0	5.8	82.4	26.3	5.2	81.5	35.8	10.4	102.3
1995-99	28.8	6.6	86.6	28.2	6.1	86.1	37.1	11.2	105.0

SEER 9 areas. Rates are per 100,000 and are age-adjusted to the 2000 U.S. standard population.
 NCHS public use data file. Rates are per 100,000 and are age-adjusted to the 2000 U.S. standard population.
 Statistic not shown. Rate based on less than 25 cases for the time interval.

Table IV-5
FEMALE BREAST CANCER (Invasive)

SURVIVAL RATES, BY RACE, DIAGNOSIS YEAR, STAGE AND AGE

	All Races, Females			White Females			Black Females		
	All	<50	50+	All	<50	50+	All	<50	50+
<u>5-YR RELATIVE SURVIVAL RATES</u>									
YEAR OF DIAGNOSIS:									
1960-63 ^a	-	-	-	63	-	-	46	-	-
1970-73 ^a	-	-	-	68	-	-	51	-	-
1974-76 ^b	74.7	76.4	74.0	75.3	77.4	74.6	63.1	64.2	62.5
1977-79 ^b	74.7	75.8	74.3	75.5	76.8	75.0	63.1	65.3	61.8
1980-82 ^b	76.3	77.1	76.1	77.1	77.9	76.9	65.7	68.8	64.0
1983-85 ^b	78.0	77.3	78.3	79.2	79.0	79.3	63.4	63.0	63.6
1986-88 ^b	82.8	80.0	83.7	83.9	81.4	84.7	69.2	67.2	70.2
1989-91 ^b	84.8	82.6	85.7	86.1	84.4	86.7	71.1	69.3	72.4
1992-98 ^b	86.2 \bar{U}	84.1 \bar{U}	87.1 \bar{U}	87.6 \bar{U}	86.0 \bar{U}	88.1 \bar{U}	72.5 \bar{U}	70.2 \bar{U}	74.1 \bar{U}
1992-98 ^b									
ALL STAGES	86.2	84.1	87.1	87.6	86.0	88.1	72.5	70.2	74.1
LOCALIZED	96.8	93.9	97.8	97.4	94.9	98.2	88.9	85.0	91.1
REGIONAL	78.4	78.5	78.4	80.2	80.8	80.0	65.4	66.1	64.7
DISTANT	22.5	27.7	20.9	24.0	30.4	22.1	14.7	18.0	13.0
UNSTAGED	55.2	60.4	53.6	55.5	64.3	53.1	51.0	44.6 \uparrow	54.2
<u>STAGE DISTRIBUTION (%) 1992-98^b</u>									
ALL STAGES									
Number of cases	100,419	24,949	75,470	85,557	19,910	65,647	8,426	2,974	5,452
Percent	100%	100%	100%	100%	100%	100%	100%	100%	100%
LOCALIZED	63	56	66	64	57	66	53	48	56
REGIONAL	28	36	26	28	36	25	34	40	30
DISTANT	6	5	6	5	5	6	9	8	9
UNSTAGED	3	2	3	3	2	3	5	4	5
<u>5-YR RELATIVE SURVIVAL RATES, 1992-98^b</u>									
AGE AT DIAGNOSIS:									
<45	82.8	-	-	84.7	-	-	69.8	-	-
45-54	86.5	-	-	88.2	-	-	72.0	-	-
55-64	87.2	-	-	88.3	-	-	75.5	-	-
65-74	88.8	-	-	89.6	-	-	78.4	-	-
75+	85.1	-	-	86.2	-	-	65.7	-	-
Under 65	85.8	-	-	87.4	-	-	72.3	-	-
65 and over	87.4	-	-	88.2	-	-	73.6	-	-

^a

^b

Rates are based on End Results data from a series of hospital registries and one population-based registry. Rates are from the SEER 9 areas. They are based on data from population-based registries in Connecticut, New Mexico, Utah, Iowa, Hawaii, Atlanta, Detroit, Seattle-Puget Sound and San Francisco-Oakland. Rates are based on follow-up of patients into 1999.

The difference in rates between 1974-76 and 1992-98 is statistically significant ($p < .05$).

The standard error of the survival rate is between 5 and 10 percentage points.

The standard error of the survival rate is greater than 10 percentage points.

Statistic could not be calculated.

\bar{U}
 \uparrow
 \uparrow
-

Table IV-6
FEMALE BREAST CANCER (Invasive)
INCIDENCE, DEATH, AND SURVIVAL RATES*

By Year of Diagnosis/Death

All Races, Females

Year of Diagnosis/Death

	1975	1980	1981	1982	1983	1984	1985	1986	1987	1988	1989	1990	1991	1992	1993	1994	1995	1996	1997	1998	1999
Incidence																					
SEER ^a	105.0	102.0	106.3	106.4	111.0	115.8	124.1	126.7	134.4	131.2	127.1	131.5	133.5	132.0	129.2	130.8	132.5	133.6	137.5	140.5	139.1
Mortality																					
U.S. ^b	31.4	31.7	31.9	32.2	32.1	32.9	33.0	32.9	32.7	33.2	33.2	33.1	32.7	31.7	31.5	31.1	30.8	29.8	28.5	27.9	27.0
SEER ^a	33.2	32.0	32.5	33.0	32.1	31.8	33.5	32.5	33.2	33.4	33.2	31.8	32.5	31.1	30.4	29.3	30.4	29.4	27.9	27.5	26.0
Relative Survival Rates (SEER ^a)																					
1-year	94.8	95.3	95.4	95.6	95.4	95.8	95.9	96.3	96.8	96.8	97.0	97.0	97.3	97.4	97.2	97.5	97.3	97.1	97.5	97.6	
2-year	89.1	89.8	90.0	90.4	90.5	91.4	91.3	91.7	93.2	93.3	93.3	93.4	93.9	94.4	94.1	94.3	94.1	93.9	94.5		
3-year	83.3	84.2	84.8	84.9	85.1	86.3	86.3	87.1	89.2	90.0	90.0	89.8	90.2	91.0	90.9	91.0	91.4	91.0			
4-year	79.0	79.6	79.7	80.8	81.0	82.2	82.3	83.5	86.0	87.1	87.1	86.9	87.6	88.1	88.2	88.6	88.8				
5-year	75.4	75.5	76.1	77.4	76.7	78.5	78.7	80.4	83.2	84.5	84.6	84.6	85.3	85.7	85.8	86.5					
6-year	72.2	72.4	73.1	74.1	73.5	75.9	76.3	78.1	80.5	82.3	82.3	82.5	83.3	83.8	83.7						
7-year	69.6	69.4	70.3	71.0	70.7	73.4	74.1	75.8	78.3	80.3	80.5	80.5	81.5	82.0							
8-year	67.7	67.0	67.6	68.8	68.3	71.3	72.2	74.2	76.8	78.8	79.0	79.1	79.7								
9-year	65.8	64.5	65.7	67.3	66.5	68.9	70.1	72.5	74.9	77.0	77.6	77.6									
10-year	63.8	62.8	63.5	65.3	64.8	66.9	68.4	70.8	73.5	75.9	76.3										
11-year	62.0	61.0	61.9	63.3	62.7	65.0	67.0	69.6	71.8	74.5											
12-year	60.6	59.6	60.6	61.9	61.5	64.1	65.8	68.2	70.4												
13-year	59.0	58.7	58.9	60.8	60.3	63.1	64.8	67.0													
14-year	58.0	57.7	57.6	59.2	59.0	61.8	63.9														
15-year	56.8	56.8	56.9	58.5	57.8	60.6															
16-year	55.6	55.3	55.6	57.5	56.9																
17-year	54.8	54.3	55.0	56.4																	
18-year	54.2	53.3	54.2																		
19-year	53.4	52.9																			
20-year	52.8																				
21-year	51.9																				
22-year	51.4																				
23-year	50.9																				
24-year	50.3																				

^a Rates are from the SEER 9 areas.

^b Rates are from the NCHS public use data file.

* Incidence and death rates are per 100,000 and are age-adjusted to the 2000 U.S. standard population by 5-year age groups.

Survival rates are relative rates expressed as percents.

Table IV-7
 FEMALE BREAST CANCER (Under 50) (Invasive)

INCIDENCE, DEATH, AND SURVIVAL RATES*

By Year of Diagnosis/Death

All Races, Females

Year of Diagnosis/Death

	1975	1980	1981	1982	1983	1984	1985	1986	1987	1988	1989	1990	1991	1992	1993	1994	1995	1996	1997	1998	1999
Incidence																					
SEER ^a	40.5	37.7	39.1	40.5	40.1	42.3	44.2	44.4	45.4	43.9	43.3	45.5	46.9	43.4	42.6	42.2	42.9	43.4	43.2	44.9	43.0
Mortality																					
U.S. ^b	9.1	8.6	8.5	8.4	8.2	8.6	8.6	8.6	8.4	8.4	8.4	8.3	8.2	7.8	7.4	7.4	7.3	7.0	6.8	6.4	5.8
SEER ^a	9.2	8.8	8.0	8.2	7.9	7.9	8.2	8.5	8.2	8.1	7.7	8.1	8.0	6.8	7.1	6.4	7.0	6.6	6.3	5.7	5.3
Relative Survival Rates (SEER ^a)																					
1-year	96.5	97.8	98.1	97.3	97.7	97.3	97.6	97.9	98.1	98.4	98.2	97.5	98.5	98.4	97.9	98.4	97.9	97.7	98.1	98.5	
2-year	90.5	90.7	91.8	92.0	91.6	91.3	91.8	92.2	92.6	93.7	93.1	93.0	93.8	94.6	94.1	93.5	93.7	93.8	94.6		
3-year	83.9	84.7	85.8	86.4	86.0	85.2	85.8	86.1	87.1	89.2	88.8	88.3	89.9	90.6	90.1	89.1	89.8	90.6			
4-year	80.1	80.0	80.7	82.2	81.1	80.9	81.2	82.0	82.9	85.5	84.9	84.7	86.6	86.1	86.9	85.9	86.3				
5-year	76.3	75.7	77.1	78.5	76.7	77.3	77.9	78.3	79.5	82.2	82.0	82.0	83.6	83.4	84.4	83.4					
6-year	72.9	72.5	74.4	74.8	73.3	74.9	75.6	75.7	76.9	80.1	79.6	79.7	81.3	81.3	82.5						
7-year	70.4	69.6	72.0	72.5	70.6	72.0	73.4	72.9	74.5	78.0	77.8	78.1	79.0	79.6							
8-year	68.6	67.6	69.6	70.2	68.6	69.6	71.7	71.2	72.8	76.2	76.3	76.0	77.4								
9-year	67.0	66.0	68.0	68.2	67.0	67.4	69.7	70.0	70.9	74.7	74.6	74.7									
10-year	65.4	64.4	66.1	66.9	65.2	66.4	68.5	68.8	69.3	73.3	73.7										
11-year	64.3	63.1	64.8	65.4	64.1	64.7	67.6	67.7	67.7	72.1											
12-year	62.6	62.2	63.7	64.1	63.1	63.9	66.4	66.4	66.1												
13-year	61.5	61.4	62.4	63.4	61.7	62.4	65.3	65.2													
14-year	60.7	60.6	61.4	61.7	60.4	61.3	64.5														
15-year	59.2	60.0	60.3	60.9	59.4	60.5															
16-year	58.2	59.1	59.3	60.3	58.7																
17-year	57.0	58.6	58.6	59.2																	
18-year	56.5	57.9	57.7																		
19-year	55.9	57.6																			
20-year	55.4																				
21-year	54.7																				
22-year	54.2																				
23-year	53.6																				
24-year	53.1																				

^a Rates are from the SEER 9 areas.

^b Rates are from the NCHS public use data file.

* Incidence and death rates are per 100,000 and are age-adjusted to the 2000 U.S. standard population by 5-year age groups.

Survival rates are relative rates expressed as percents.

Table IV-8
FEMALE BREAST CANCER (50 and Over) (Invasive)

INCIDENCE, DEATH, AND SURVIVAL RATES*

By Year of Diagnosis/Death

All Races, Females

Year of Diagnosis/Death

	1975	1980	1981	1982	1983	1984	1985	1986	1987	1988	1989	1990	1991	1992	1993	1994	1995	1996	1997	1998	1999
Incidence																					
SEER ^a	273.8	270.5	282.0	279.0	296.6	308.1	333.2	342.3	367.4	359.6	346.4	356.8	360.2	363.9	356.0	362.8	367.1	369.8	384.2	391.0	390.8
Mortality																					
U.S. ^b	89.9	92.2	93.3	94.4	94.7	96.6	96.9	96.3	96.1	98.2	98.2	98.2	97.1	94.5	94.6	93.2	92.2	89.4	85.5	84.1	82.4
SEER ^a	95.8	92.6	96.6	97.9	95.6	94.4	99.8	95.2	98.9	99.8	99.8	93.6	96.5	94.5	91.4	89.4	91.6	89.1	84.6	84.6	80.0
Relative Survival Rates (SEER ^a)																					
1-year	94.3	94.5	94.6	95.1	94.7	95.3	95.4	95.8	96.5	96.3	96.7	96.8	96.9	97.1	96.9	97.3	97.0	96.9	97.3	97.4	
2-year	88.6	89.6	89.5	90.0	90.2	91.4	91.1	91.5	93.4	93.2	93.4	93.5	93.9	94.3	94.0	94.6	94.2	93.9	94.4		
3-year	83.0	84.0	84.5	84.4	84.8	86.6	86.5	87.4	89.8	90.3	90.4	90.3	90.3	91.2	91.2	91.7	92.0	91.2			
4-year	78.6	79.5	79.4	80.4	81.0	82.7	82.7	84.0	87.0	87.7	87.9	87.7	88.0	88.8	88.6	89.6	89.7				
5-year	75.1	75.4	75.8	77.0	76.8	79.0	79.1	81.2	84.5	85.4	85.6	85.7	85.9	86.6	86.4	87.7					
6-year	72.0	72.3	72.6	73.8	73.6	76.3	76.5	79.0	81.8	83.1	83.3	83.6	84.2	84.9	84.3						
7-year	69.4	69.3	69.7	70.4	70.7	74.0	74.4	76.9	79.7	81.3	81.6	81.6	82.6	83.1							
8-year	67.4	66.8	67.0	68.3	68.2	72.0	72.4	75.4	78.3	79.9	80.2	80.5	80.9								
9-year	65.3	64.1	64.9	66.9	66.4	69.6	70.4	73.6	76.6	78.0	79.0	79.0									
10-year	63.2	62.3	62.5	64.7	64.7	67.2	68.5	71.8	75.4	77.1	77.7										
11-year	61.0	60.2	60.8	62.5	62.3	65.4	66.8	70.6	73.7	75.9											
12-year	59.7	58.6	59.4	61.1	61.0	64.5	65.7	69.3	72.6												
13-year	58.0	57.8	57.5	59.8	59.9	63.7	64.9	68.2													
14-year	56.9	56.6	56.1	58.1	58.6	62.5	64.0														
15-year	55.7	55.6	55.4	57.6	57.5	61.2															
16-year	54.5	53.8	54.0	56.3	56.5																
17-year	53.8	52.5	53.5	55.3																	
18-year	53.1	51.4	52.8																		
19-year	52.2	51.0																			
20-year	51.5																				
21-year	50.4																				
22-year	50.0																				
23-year	49.4																				
24-year	48.7																				

^a Rates are from the SEER 9 areas.

^b Rates are from the NCHS public use data file.

* Incidence and death rates are per 100,000 and are age-adjusted to the 2000 U.S. standard population by 5-year age groups.

Survival rates are relative rates expressed as percents.

Table IV-9
BREAST CANCER (Invasive)

Percent Diagnosed With Cancer In 10, 20 and 30 Years and In Remaining Lifetime,
 Given Cancer Free At Current Age By Race and Sex

Lifetime Risk (Percent) of Being Diagnosed (12 SEER Areas) With Cancer and
 Lifetime Risk (Percent) of Dying (Total U.S.) From Cancer

1997-1999

All Races

Current Age	Males				Females				
	+10 yrs	+20 yrs	+30 yrs	Eventually	+10 yrs	+20 yrs	+30 yrs	Eventually	
0	0.00	0.00	0.00	0.11	0.00	0.00	0.05	13.42	
10	0.00	0.00	0.00	0.11	0.00	0.05	0.45	13.53	
20	0.00	0.00	0.01	0.11	0.05	0.45	1.91	13.56	
30	0.00	0.01	0.02	0.11	0.40	1.87	4.62	13.58	
40	0.00	0.02	0.05	0.11	1.49	4.27	7.61	13.33	
50	0.02	0.05	0.08	0.11	2.87	6.32	9.76	12.23	
60	0.03	0.07	0.09	0.10	3.70	7.40	9.59	10.06	
Lifetime Risk of Being Diagnosed =				0.11%	Lifetime Risk of Being Diagnosed =				13.42%
Lifetime Risk of Dying =				0.03%	Lifetime Risk of Dying =				3.12%

Whites

Current Age	Males				Females				
	+10 yrs	+20 yrs	+30 yrs	Eventually	+10 yrs	+20 yrs	+30 yrs	Eventually	
0	0.00	0.00	0.00	0.11	0.00	0.00	0.05	14.05	
10	0.00	0.00	0.00	0.11	0.00	0.05	0.44	14.15	
20	0.00	0.00	0.01	0.11	0.04	0.44	1.93	14.18	
30	0.00	0.01	0.02	0.12	0.40	1.89	4.74	14.20	
40	0.00	0.02	0.05	0.12	1.51	4.38	7.93	13.94	
50	0.02	0.05	0.09	0.12	2.97	6.62	10.27	12.82	
60	0.04	0.07	0.10	0.11	3.92	7.83	10.10	10.57	
Lifetime Risk of Being Diagnosed =				0.11%	Lifetime Risk of Being Diagnosed =				14.05%
Lifetime Risk of Dying =				0.03%	Lifetime Risk of Dying =				3.12%

Blacks

Current Age	Males				Females				
	+10 yrs	+20 yrs	+30 yrs	Eventually	+10 yrs	+20 yrs	+30 yrs	Eventually	
0	0.00	0.00	0.00	0.12	0.00	0.00	0.07	10.23	
10	0.00	0.00	0.00	0.12	0.00	0.07	0.49	10.41	
20	0.00	0.00	0.01	0.12	0.07	0.49	1.82	10.44	
30	0.00	0.01	0.05	0.13	0.42	1.77	4.14	10.46	
40	0.01	0.05	0.07	0.13	1.37	3.78	6.36	10.24	
50	0.04	0.07	0.09	0.14	2.54	5.25	7.68	9.34	
60	0.03	0.06	0.08	0.11	3.03	5.73	7.23	7.59	
Lifetime Risk of Being Diagnosed =				0.12%	Lifetime Risk of Being Diagnosed =				10.23%
Lifetime Risk of Dying =				0.04%	Lifetime Risk of Dying =				3.39%

Table IV-10
 FEMALE BREAST CANCER (Invasive)

AGE-ADJUSTED SEER INCIDENCE AND U.S. DEATH RATES

By Race/Ethnicity and Sex

Incidenceⁱ

RACE/ETHNICITY	Rate 1992-1999	Trend 1992-1999
	Rate per 100,000 persons	EAPC (%)
	Females	Females
All Races	132.1	1.1★
White	137.0	1.0★
White Hispanic	87.1	0.4
White Non-Hispanic	144.5	1.3★
Black	120.7	0.3
Asian/Pacific Islander	93.4	3.4★
Amer Ind/Alaska Nat	59.4	-1.2
Hispanic [⊗]	82.6	0.5

Mortality[❖]

RACE/ETHNICITY	Rate 1992-1999	Trend 1992-1999
	Rate per 100,000 persons	EAPC (%)
	Females	Females
All Races	29.7	-2.4★
White	29.3	-2.7★
White Hispanic	18.3	-1.8★
White Non-Hispanic	29.5	-2.6★
Black	37.3	-0.7
Asian/Pacific Islander	13.1	-0.5
Amer Ind/Alaska Nat	14.8	0.5
Hispanic [⊗]	17.5	-1.8★

- The EAPC is the Estimated Annual Percent Change over the time interval.
 - Statistic not shown. Rate based on less than 25 cases for the time interval. Trend based on less than 10 cases for at least one year within the time interval.
 i Incidence data are from the 12 SEER areas (San Francisco, Connecticut, Detroit, Hawaii, Iowa, New Mexico, Seattle, Utah, Atlanta, San Jose-Monterey, Los Angeles, and Alaska Native Registry).
 ⊗ Hispanic is not mutually exclusive from whites, blacks, Asian Pacific Islanders, and American Indians/Alaska Natives. Incidence data for Hispanics does not include cases from Detroit, Hawaii and Alaska Native Registry. For mortality, information is included for all states except Connecticut, Oklahoma, New York, and New Hampshire.
 ❖ Mortality data are analyzed from a public use file provided by the National Center for Health Statistics (NCHS).
 ★ The EAPC is significantly different from zero (p<.05).

Table IV-11
FEMALE BREAST CANCER (Invasive)AGE-ADJUSTED SEER INCIDENCE RATES§ AND SEER DEATH RATESä
By Registry, Race and Age

	All Races, Females			White Females			Black Females		
	All	<50	50+	All	<50	50+	All	<50	50+
<u>SEER INCIDENCE RATES§, 1995-99</u>									
REGISTRY									
11 registries	134.1	42.5	373.9	139.0	42.8	390.9	121.5	42.2	329.3
9 registries	136.7	43.5	380.8	140.9	43.7	395.5	123.7	44.0	332.4
San Francisco-Oakland	141.5	45.4	393.2	158.5	48.2	447.2	110.7	38.5	300.0
Connecticut	145.6	47.4	402.6	146.9	47.9	406.1	115.7	39.7	314.8
Metropolitan Detroit	131.5	43.3	362.3	133.8	42.9	371.8	122.5	43.9	328.3
Hawaii	130.0	45.7	350.8	154.9	45.8	440.6	-	-	-
Iowa	130.7	40.4	367.3	130.7	40.2	367.7	148.3	51.3	402.2
New Mexico	120.3	40.1	330.2	126.4	42.8	345.3	81.6	-	240.3
Seattle-Puget Sound	149.1	43.7	425.4	153.5	44.3	439.3	118.3	39.7	324.1
Utah	116.9	34.0	334.0	119.0	34.8	339.4	-	-	-
Metropolitan Atlanta	139.7	45.7	385.7	138.0	42.9	387.0	144.6	50.7	390.6
San Jose-Monterey	140.7	41.6	400.2	147.2	41.6	423.7	105.0	27.8	307.2
Los Angeles	124.3	39.8	345.5	130.4	40.4	366.1	117.2	38.3	323.9
<u>SEER DEATH RATESä, 1995-99</u>									
REGISTRY									
11 registries	27.7	6.2	84.2	28.0	5.7	86.4	37.3	11.1	106.0
9 registries	28.2	6.2	85.9	28.3	5.6	87.5	38.1	11.1	108.7
San Francisco-Oakland	26.8	6.2	80.9	29.3	5.6	91.3	32.8	11.1	89.7
Connecticut	29.7	6.1	91.4	29.4	5.9	90.9	35.8	9.2	105.4
Metropolitan Detroit	31.2	7.3	93.8	29.2	6.0	89.8	38.6	11.3	109.9
Hawaii	20.4	4.5	61.9	29.7	-	97.9	-	-	-
Iowa	27.5	5.6	84.6	27.5	5.6	84.7	34.4	-	105.0
New Mexico	27.2	6.6	81.2	28.2	6.9	83.7	-	-	-
Seattle-Puget Sound	27.6	5.5	85.7	28.1	5.4	87.3	35.1	9.6	101.9
Utah	24.5	5.0	75.7	24.6	5.0	76.1	-	-	-
Metropolitan Atlanta	31.6	7.1	95.8	27.6	4.8	87.5	45.4	12.6	131.3
San Jose-Monterey	25.7	5.0	80.0	27.9	5.2	87.3	32.9	-	109.7
Los Angeles	26.8	6.6	79.6	27.2	6.3	82.1	35.8	11.5	99.5

Note: San Jose-Monterey and Los Angeles are new SEER areas as of 1992 and their data are only used in tables where indicated.
 § SEER 9 areas. Incidence rates are per 100,000 and are age-adjusted to the 2000 U.S. standard population by 5-year age groups.
 ä NCHS public use data file. Death rates are per 100,000 and are age-adjusted to the 2000 U.S. standard population by 5-year age groups.
 - Statistic could not be calculated or populations are inadequate.

Table IV-12
FEMALE BREAST CANCER (Invasive)AVERAGE ANNUAL AGE-ADJUSTED CANCER DEATH^ä RATES BY STATE, 1995-99

All Races, Females

State	Rate	SE	Rank	PD	State	Rate	SE	Rank	PD
TOTAL U.S.	28.8	0.06							
High Five States									
District of Columbia	39.1 \oplus *	1.57	(01)	35.8					
Delaware	32.6*	1.28	(02)	13.2					
New Jersey	32.2 \oplus *	0.37	(03)	11.8					
New York	31.5 \oplus	0.25	(04)	9.4					
Maryland	31.4 \oplus	0.49	(05)	9.0					
Low Five States									
South Dakota	25.2*	1.11	(47)	-12.5					
Alaska	24.8*	1.79	(48)	-13.9					
Colorado	24.6 \oplus *	0.51	(49)	-14.6					
Utah	24.5 \oplus *	0.78	(50)	-14.9					
Hawaii	20.4 \oplus *	0.81	(51)	-29.2					
Alabama	26.7 \oplus	0.47	(43)	-7.3	Montana	26.6	1.04	(44)	-7.6
Alaska	24.8*	1.79	(48)	-13.9	Nebraska	27.1	0.76	(39)	-5.9
Arizona	25.8 \oplus *	0.47	(46)	-10.4	Nevada	27.9	0.85	(26)	-3.1
Arkansas	26.7	0.60	(42)	-7.3	New Hampshire	29.7	0.99	(12)	3.1
California	27.1 \oplus	0.19	(37)	-5.9	New Jersey	32.2 \oplus *	0.37	(03)	11.8
Colorado	24.6 \oplus *	0.51	(49)	-14.6	New Mexico	27.2	0.80	(36)	-5.6
Connecticut	29.7	0.55	(13)	3.1	New York	31.5 \oplus	0.25	(04)	9.4
Delaware	32.6*	1.28	(02)	13.2	North Carolina	28.7	0.38	(18)	-0.3
District of Columbia	39.1 \oplus *	1.57	(01)	35.8	North Dakota	27.2	1.22	(35)	-5.6
Florida	27.4 \oplus	0.24	(33)	-4.9	Ohio	30.7 \oplus	0.31	(10)	6.6
Georgia	28.3	0.40	(24)	-1.7	Oklahoma	27.7	0.54	(29)	-3.8
Hawaii	20.4 \oplus *	0.81	(51)	-29.2	Oregon	27.7	0.55	(30)	-3.8
Idaho	26.7	0.95	(41)	-7.3	Pennsylvania	30.9 \oplus	0.29	(08)	7.3
Illinois	31.0 \oplus	0.31	(07)	7.6	Rhode Island	31.0	1.02	(06)	7.6
Indiana	29.2	0.43	(16)	1.4	South Carolina	28.6	0.53	(20)	-0.7
Iowa	27.5	0.57	(32)	-4.5	South Dakota	25.2*	1.11	(47)	-12.5
Kansas	26.5 \oplus	0.60	(45)	-8.0	Tennessee	28.5	0.44	(21)	-1.0
Kentucky	28.1	0.51	(25)	-2.4	Texas	26.8 \oplus	0.24	(40)	-6.9
Louisiana	30.8 \oplus	0.52	(09)	6.9	Utah	24.5 \oplus *	0.78	(50)	-14.9
Maine	28.8	0.89	(17)	0.0	Vermont	28.6	1.33	(19)	-0.7
Maryland	31.4 \oplus	0.49	(05)	9.0	Virginia	29.5	0.41	(14)	2.4
Massachusetts	30.4 \oplus	0.41	(11)	5.6	Washington	27.1 \oplus	0.44	(38)	-5.9
Michigan	29.5	0.33	(15)	2.4	West Virginia	27.6	0.70	(31)	-4.2
Minnesota	27.8	0.47	(27)	-3.5	Wisconsin	27.8	0.44	(28)	-3.5
Mississippi	28.5	0.63	(22)	-1.0	Wyoming	27.3	1.51	(34)	-5.2
Missouri	28.4	0.43	(23)	-1.4					

^ä NCHS public use data file. Rates are per 100,000 and are age-adjusted to the 2000 U.S. standard population by 5-year age groups.

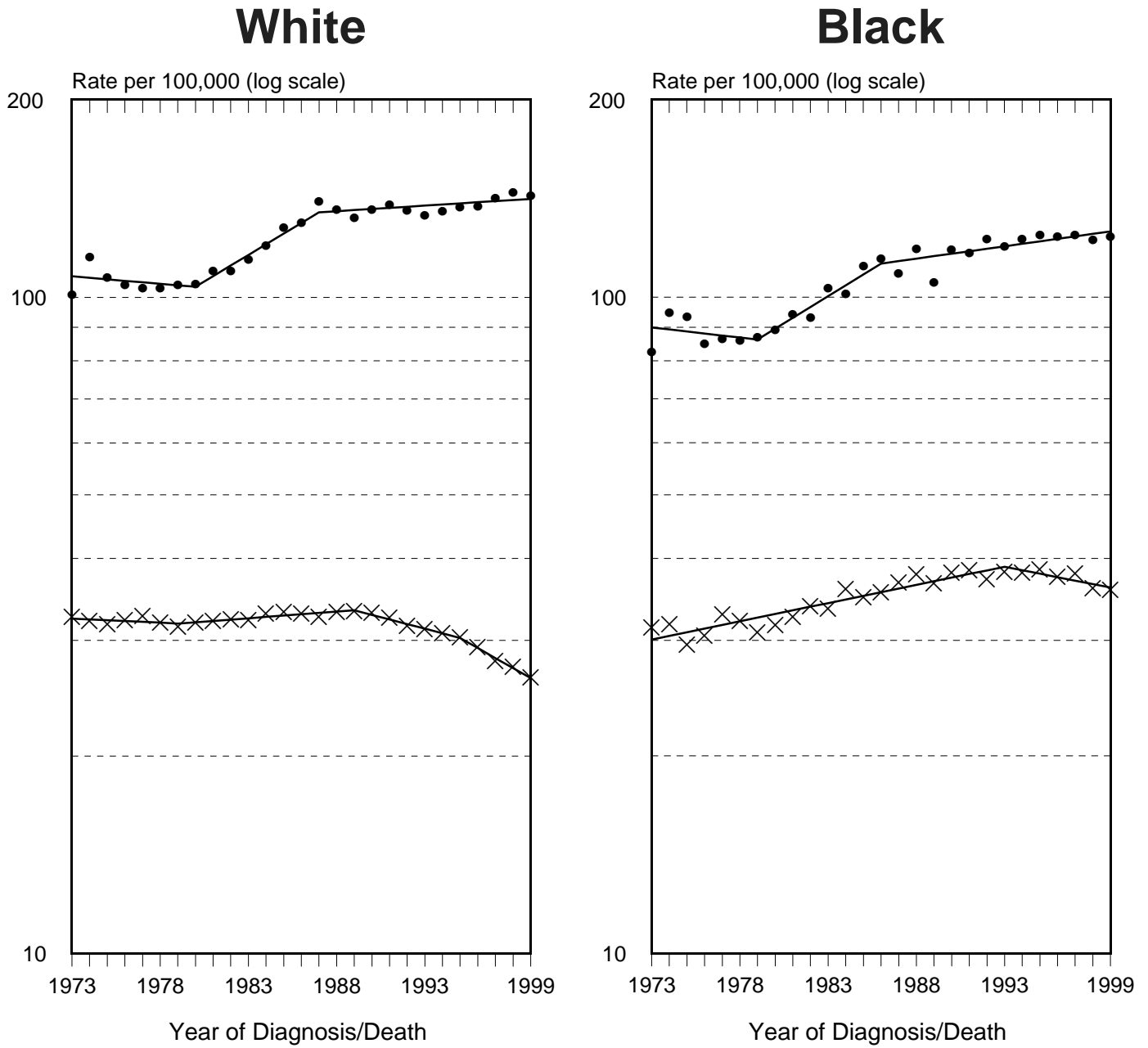
SE Standard error of the rate.

PD Percent difference between state rate and total U.S. rate.

* Absolute percent difference between state rate and total U.S. rate is 10% or more.

\oplus Difference between state rate and total U.S. rate is statistically significant ($p \leq .0002$).

SEER Incidence and U.S. Death Rates⁺ Female Breast Cancer By Race

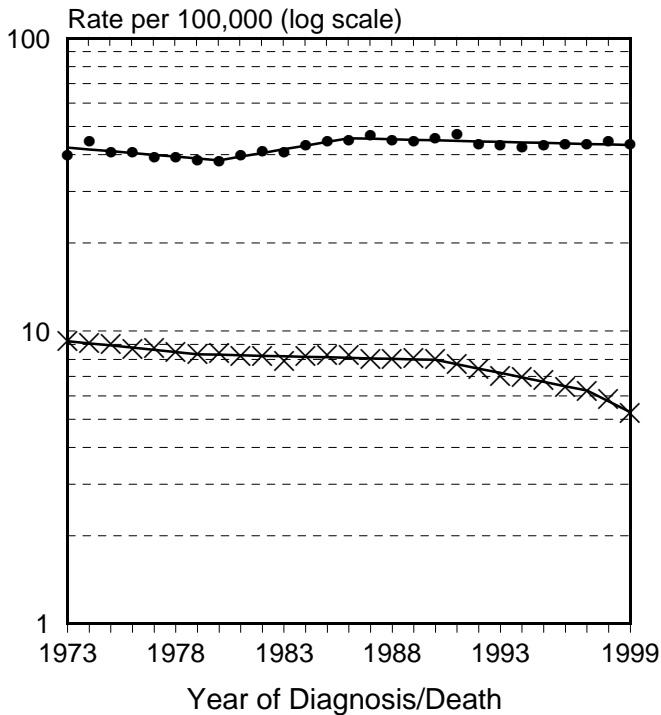


• Incidence × Mortality

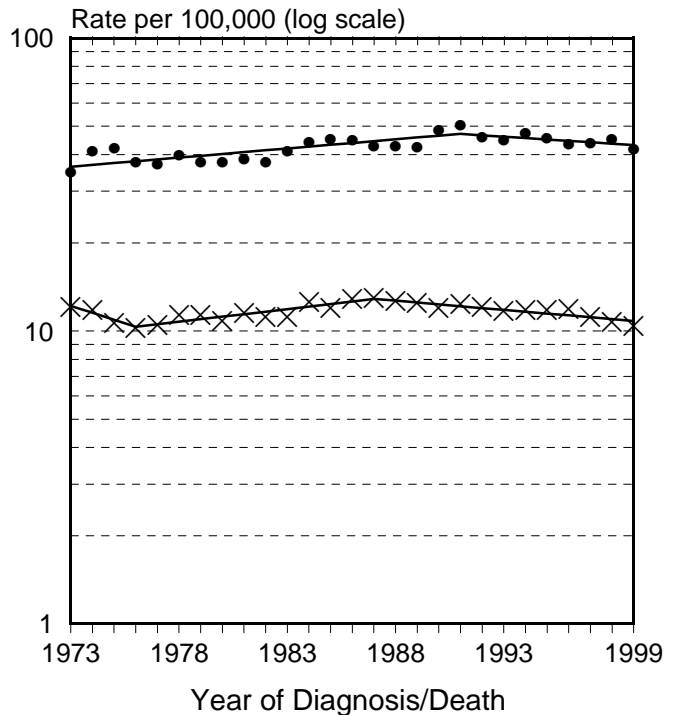
⁺ Source: SEER 9 areas and NCHS public use data file. Rates are age-adjusted to the 2000 U.S. standard million population by 5-year age groups. Regression lines are calculated using the Joinpoint Regression Program.

SEER Incidence and U.S. Death Rates⁺ Female Breast Cancer, By Age and Race

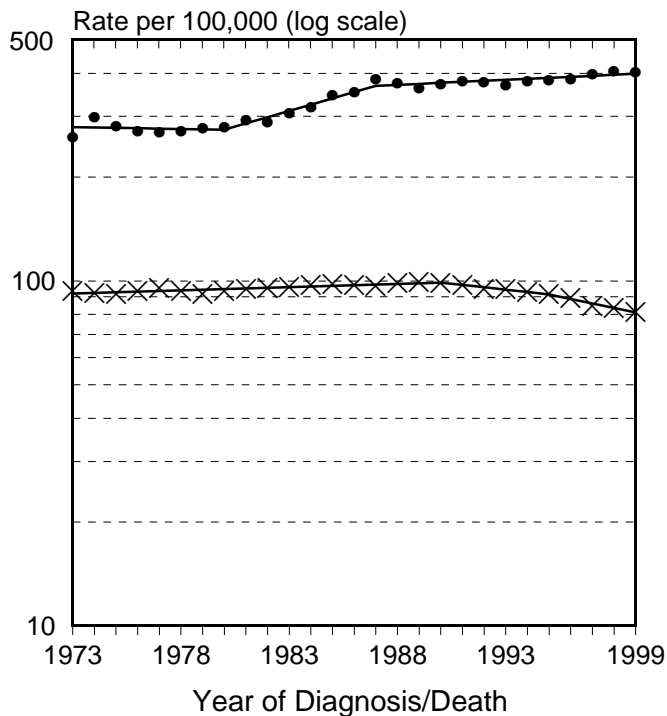
White - Under 50 Years of Age



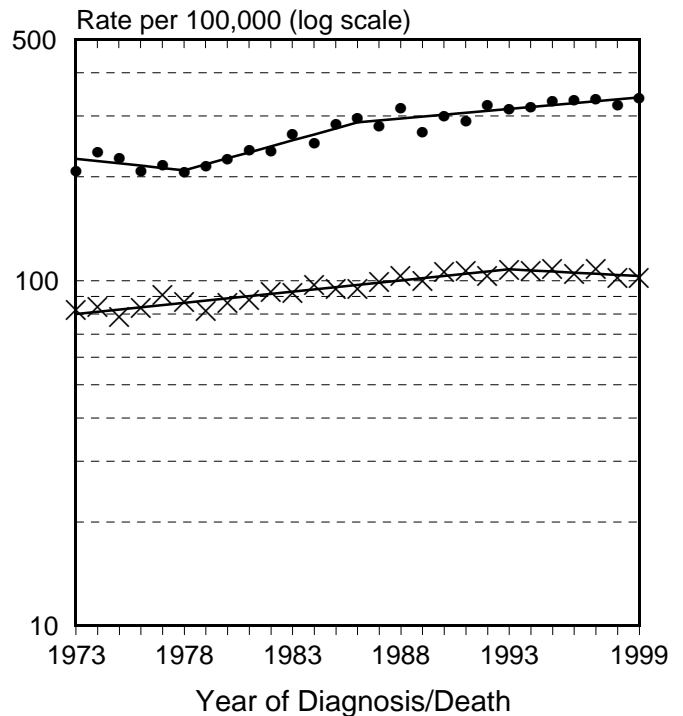
Black - Under 50 Years of Age



White - Ages 50 and Over



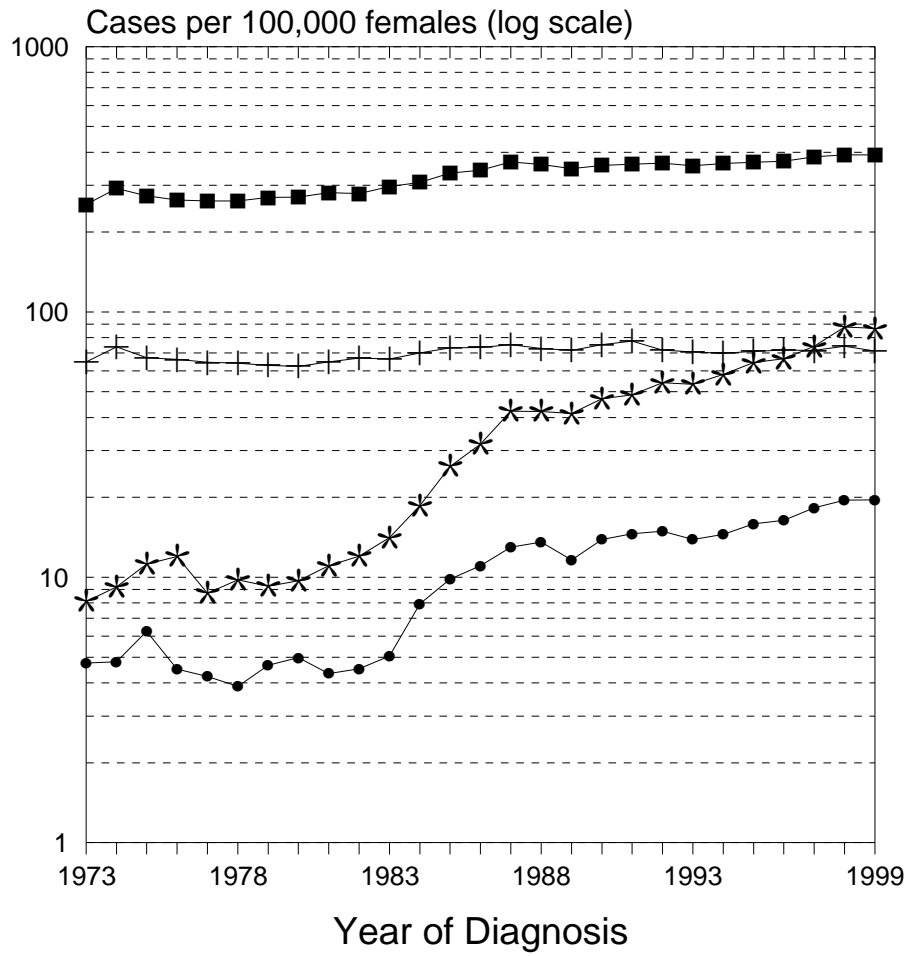
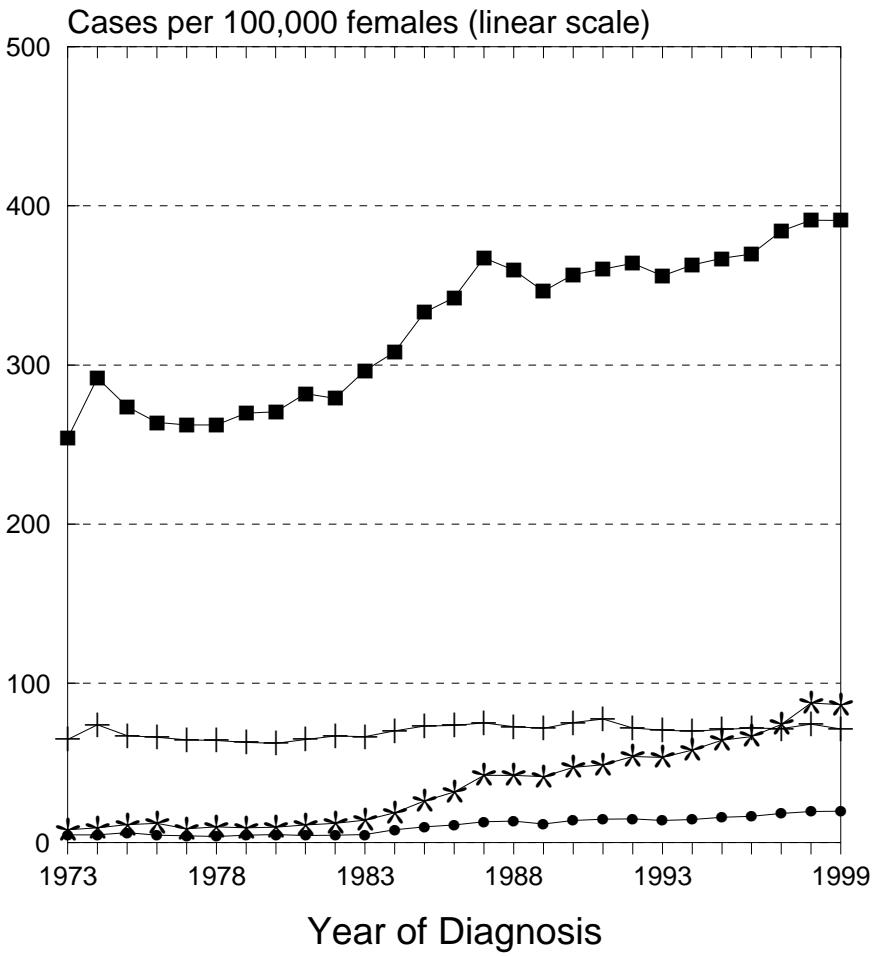
Black - Ages 50 and Over



• Incidence × Mortality

⁺ Source: SEER 9 areas and NCHS public use data file. Rates are age-adjusted to the 2000 U.S. standard million population by 5-year age groups. Regression lines are calculated using the Joinpoint Regression Program.

Breast Cancer Incidence Rates, 1973-1999 by Age, In Situ vs. Malignant All Races, Female



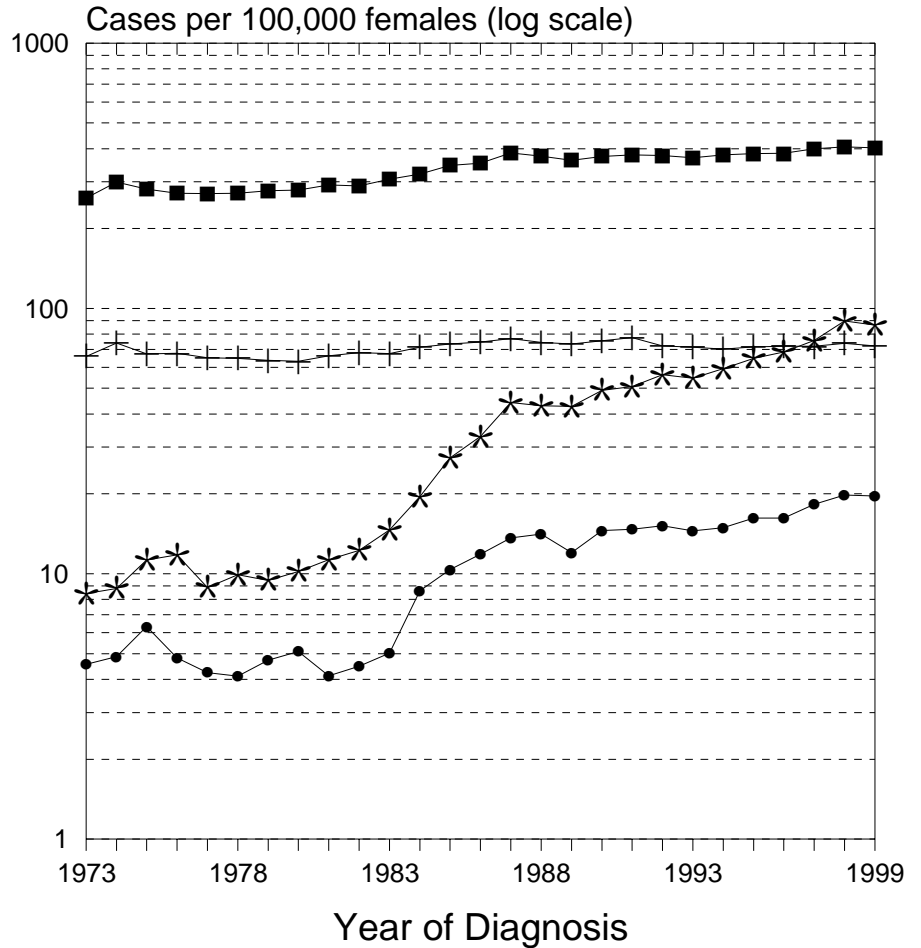
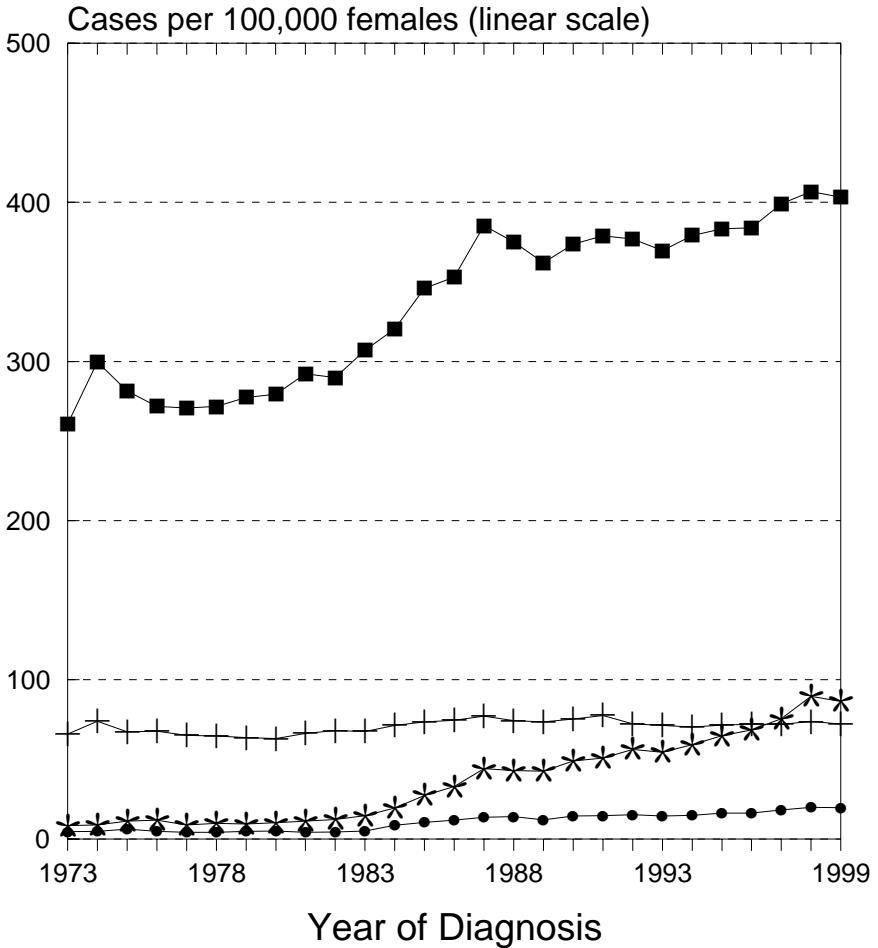
• In Situ: Ages 20-49 + Malign: Ages 20-49
* In Situ: Ages 50+ ■ Malign: Ages 50+

• In Situ: Ages 20-49 + Malign: Ages 20-49
* In Situ: Ages 50+ ■ Malign: Ages 50+

Source: SEER 9 areas. Rates are age-adjusted to 2000 U.S. standard million population by 5-year age groups.

Figure IV-3

Breast Cancer Incidence Rates, 1973-1999 by Age, In Situ vs. Malignant White Females



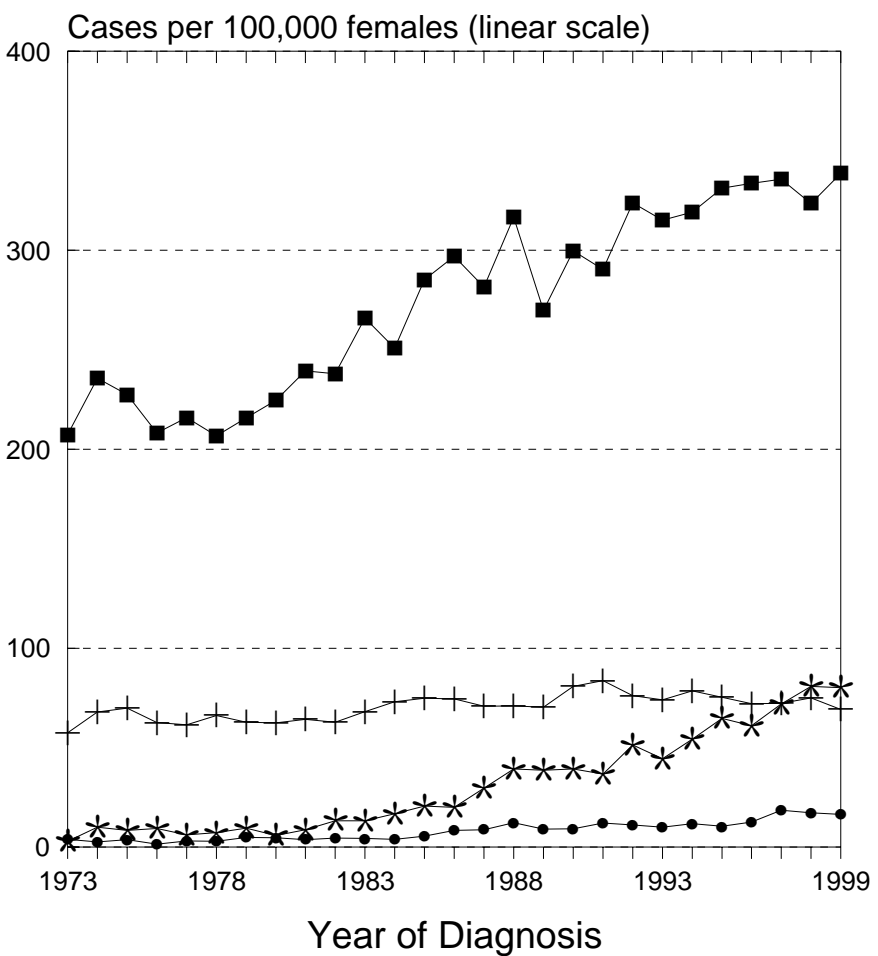
• In Situ: Ages 20-49 + Malign: Ages 20-49
* In Situ: Ages 50+ ■ Malign: Ages 50+

• In Situ: Ages 20-49 + Malign: Ages 20-49
* In Situ: Ages 50+ ■ Malign: Ages 50+

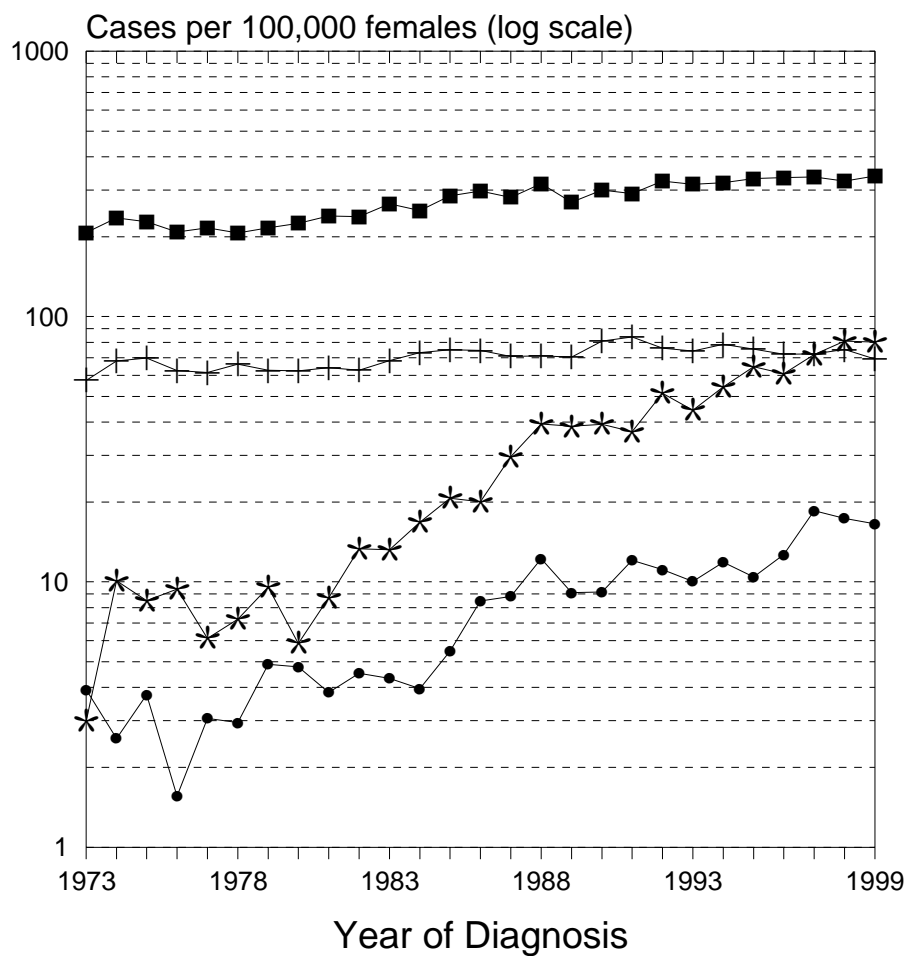
Source: SEER 9 areas. Rates are age-adjusted to 2000 U.S. standard million population by 5-year age groups.

Figure IV-4

Breast Cancer Incidence Rates, 1973-1999 by Age, In Situ vs. Malignant Black Females



• In Situ: Ages 20-49 + Malign: Ages 20-49
 * In Situ: Ages 50+ ■ Malign: Ages 50+



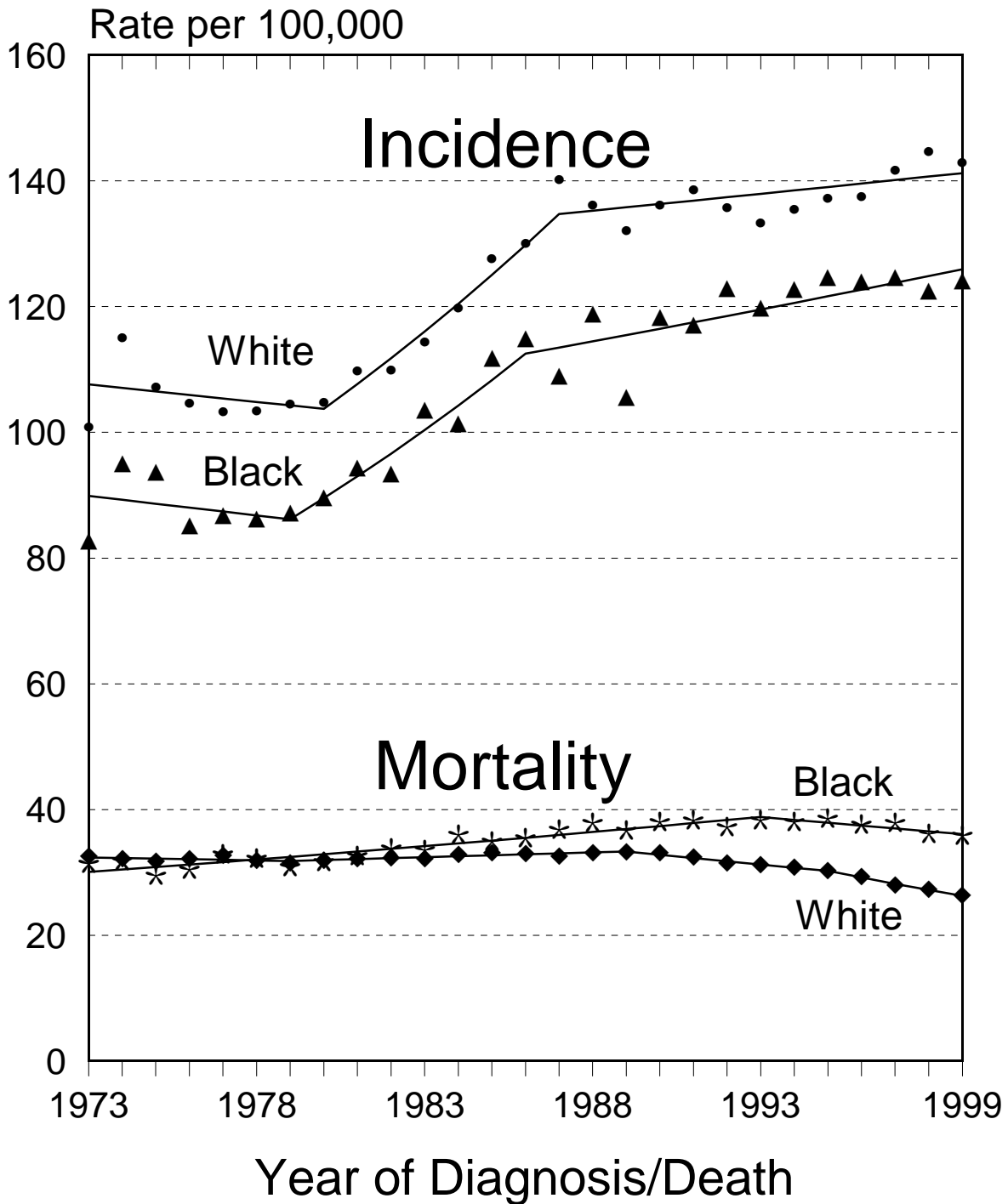
• In Situ: Ages 20-49 + Malign: Ages 20-49
 * In Situ: Ages 50+ ■ Malign: Ages 50+

Source: SEER 9 areas. Rates are age-adjusted to 2000 U.S. standard million population by 5-year age groups.

Figure IV-5

Figure IV-6

Breast Cancer Incidence & Mortality White Females vs. Black Females

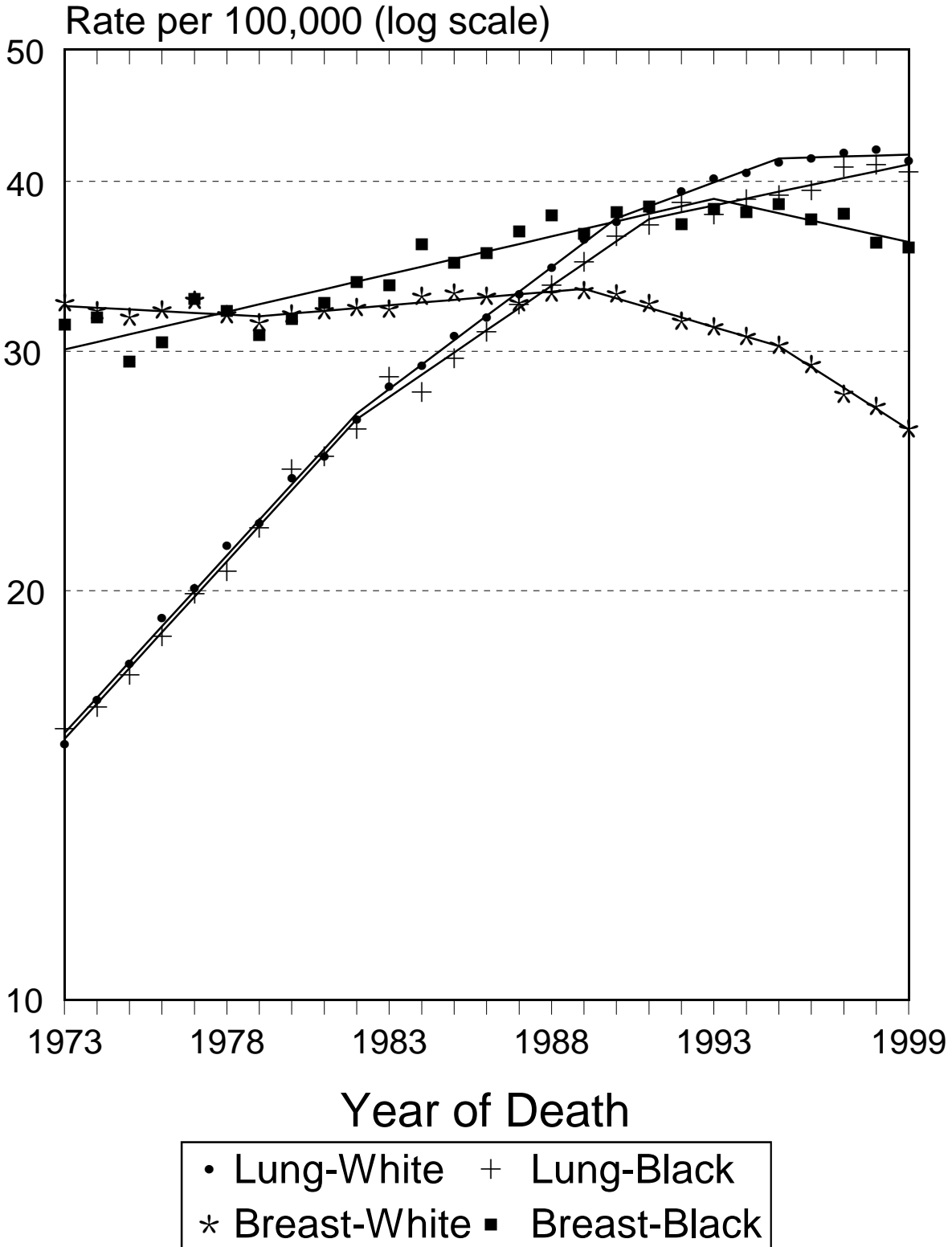


• White Incidence ▲ Black Incidence
◆ White Mortality * Black Mortality

Source: SEER 9 areas and NCHS public use data file. Rates are age-adjusted to the 2000 U.S. standard million population by 5-year age groups. Regression lines are calculated using the Joinpoint Regression Program.

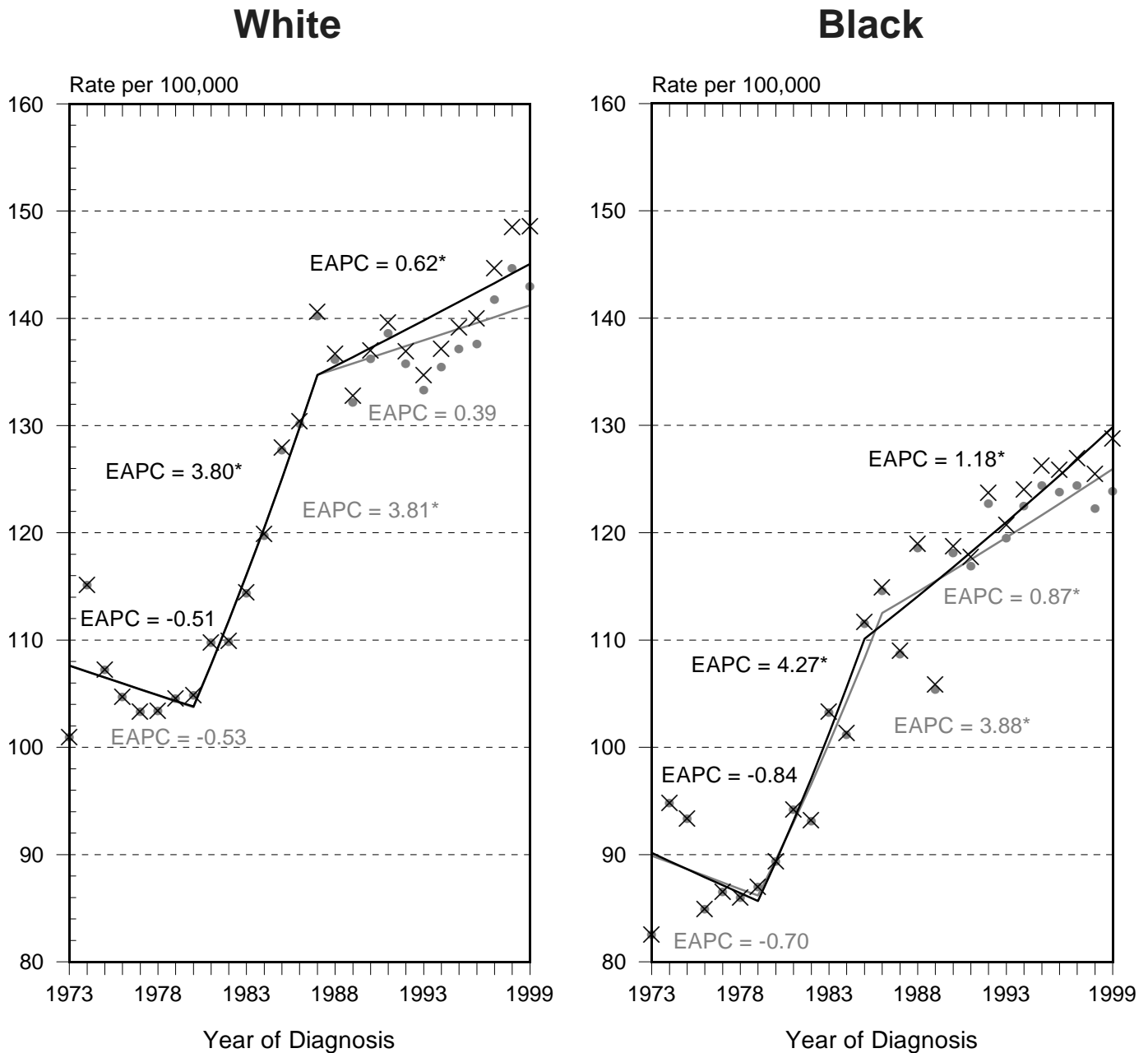
Figure IV-7

Breast vs. Lung Cancer Mortality White Females vs. Black Females United States, 1973-1999



Source: NCHS public use data file. Rates are age-adjusted to the 2000 U.S. standard million population by 5-year age groups. Regression lines are calculated using the Joinpoint Regression Program.

SEER Incidence and Delay Adjusted Incidence Rates⁺ Female Breast Cancer By Race



• Incidence × Delay Adjusted Incidence

Source: SEER 9 areas.

⁺ Rates are age-adjusted to the 2000 U.S. standard million population by 5-year age groups. Regression lines are calculated using the Joinpoint Regression Program. The EAPC is the Estimated Annual Percent Change for the regression line segments. The EAPC is calculated by the Joinpoint Regression Program.

* The EAPC is significantly different from zero ($p < 0.05$).