

Table XXVI-1
URINARY BLADDER CANCER (Invasive and In Situ)

TRENDS IN SEER INCIDENCE^a AND U.S. MORTALITY^b USING THE JOINPOINT REGRESSION PROGRAM, 1975-2000
WITH UP TO THREE JOINPOINTS BY RACE AND SEX

		<u>Joinpoint Segment 1</u>		<u>Joinpoint Segment 2</u>		<u>Joinpoint Segment 3</u>		<u>Joinpoint Segment 4</u>	
		Year	APC	Year	APC	Year	APC	Year	APC
<u>SEER Cancer Incidence^a</u>									
All Races	Male and Female	1975-1987	0.7 ^c	1987-2000	0.0				
All Races	Male	1975-1987	0.9 ^c	1987-2000	-0.2				
All Races	Female	1975-2000	0.2 ^c						
White	Male and Female	1975-1987	0.9 ^c	1987-2000	0.1				
White	Male	1975-1987	1.1 ^c	1987-2000	-0.2				
White	Female	1975-2000	0.3 ^c						
Black	Male and Female	1975-2000	0.3						
Black	Male	1975-2000	0.4						
Black	Female	1975-2000	0.5						
<u>SEER Delay-Adjusted Incidence^a</u>									
White	Male	1975-1987	1.2 ^c	1987-1996	-0.5	1996-2000	2.1 ^c		
White	Female	1975-2000	0.4 ^c						
Black	Male	1975-2000	0.5						
Black	Female	1975-2000	0.6						
<u>U.S. Cancer Mortality^b</u>									
All Races	Male and Female	1975-1977	0.0	1977-1987	-2.1 ^c	1987-2000	-0.2 ^c		
All Races	Male	1975-1982	-1.4 ^c	1982-1987	-2.3 ^c	1987-2000	-0.3 ^c		
All Races	Female	1975-1986	-1.7 ^c	1986-2000	-0.3 ^c				
White	Male and Female	1975-1977	0.1	1977-1987	-2.1 ^c	1987-2000	0.0		
White	Male	1975-1988	-1.7 ^c	1988-2000	-0.2 ^c				
White	Female	1975-1987	-1.7 ^c	1987-2000	-0.1				
Black	Male and Female	1975-2000	-1.1 ^c						
Black	Male	1975-2000	-1.0 ^c						
Black	Female	1975-2000	-0.8 ^c						

The APC is the Annual Percent Change based on rates age-adjusted to the 2000 U.S. standard population by 5-year age groups using the Joinpoint Regression Program.

^a Trends are from the SEER 9 areas.

^b Trends are from the NCHS public use data file.

^c The APC is significantly different from zero (p<.05).

Table XXVI-2
URINARY BLADDER CANCER (Invasive and *In Situ*)

SEER INCIDENCE RATES, AGE-ADJUSTED AND AGE-SPECIFIC RATES^a, BY RACE AND SEX

	All Races			Whites			Blacks		
	Total	Males	Females	Total	Males	Females	Total	Males	Females
<u>AGE-ADJUSTED RATES</u>									
YEAR OF DIAGNOSIS:									
1975	19.3	34.3	8.9	20.2	36.4	9.2	10.5	16.2	6.3
1976	19.7	34.4	9.5	20.7	36.7	9.7	12.5	18.2	8.6
1977	19.0	33.4	8.9	20.0	35.5	9.2	13.5	22.8	7.1
1978	20.0	35.4	9.4	21.1	37.8	9.7	11.7	19.4	6.4
1979	20.0	35.3	9.4	21.3	38.1	9.8	10.4	15.8	6.5
1980	20.4	37.2	8.9	21.5	39.8	9.1	13.3	18.2	10.0
1981	20.7	36.3	9.7	21.9	38.7	10.3	11.5	20.5	5.5
1982	20.1	35.8	9.5	21.4	38.3	10.1	12.1	21.7	5.5
1983	20.0	36.0	9.0	21.3	38.6	9.4	12.2	18.7	7.6
1984	20.8	37.7	9.2	22.3	40.9	9.6	11.4	18.6	6.2
1985	20.7	36.4	9.9	22.1	39.2	10.3	13.0	20.3	8.0
1986	21.0	37.9	9.4	22.5	40.8	10.0	12.9	22.0	6.6
1987	21.6	39.5	9.2	23.2	42.8	9.6	13.2	21.8	7.4
1988	20.8	38.1	9.0	22.7	41.8	9.6	11.3	18.0	6.4
1989	21.0	37.4	9.7	22.7	40.9	10.2	11.3	17.3	7.2
1990	21.1	37.5	9.6	22.6	40.7	10.0	12.6	18.6	8.6
1991	20.9	37.5	9.3	22.6	41.1	9.9	12.8	19.6	8.4
1992	21.2	37.5	9.8	22.9	40.6	10.5	12.4	20.7	6.9
1993	21.2	37.5	9.7	22.8	40.4	10.3	14.1	24.2	7.9
1994	20.8	36.8	9.5	22.5	40.1	10.2	12.3	20.0	6.9
1995	20.6	36.1	9.6	22.3	39.3	10.2	11.8	18.0	7.4
1996	20.7	36.3	9.5	22.4	39.6	10.3	12.1	19.5	7.3
1997	20.9	36.8	9.5	22.7	40.2	10.1	12.2	19.7	7.7
1998	21.4	38.2	9.4	23.3	41.7	10.1	11.6	19.9	6.3
1999	21.5	37.7	9.9	23.3	40.9	10.5	14.4	23.0	9.1
2000	21.3	37.8	9.4	23.1	41.1	10.1	12.9	19.7	8.4
<u>AGE-ADJUSTED RATES, 1996-2000</u>									
AGE AT DIAGNOSIS:									
All ages	21.2	37.4	9.5	23.0	40.7	10.2	12.7	20.4	7.8
Under 65	6.7	10.5	3.2	7.5	11.5	3.5	3.7	5.5	2.2
65 and over	120.9	223.5	53.4	130.3	242.6	56.2	74.4	123.1	46.0
All ages (world std.) ^b	12.9	21.9	5.8	14.1	23.9	6.3	7.4	11.6	4.5
<u>AGE-SPECIFIC RATES, 1996-2000</u>									
AGE AT DIAGNOSIS:									
<1	-	-	-	-	-	-	-	-	-
1-4	-	-	-	-	-	-	-	-	-
5-9	-	-	-	-	-	-	-	-	-
10-14	-	-	-	-	-	-	-	-	-
15-19	-	-	-	-	-	-	-	-	-
20-24	0.3	-	-	-	-	-	-	-	-
25-29	0.6	0.6	0.6	0.7	0.8	-	-	-	-
30-34	0.8	1.1	0.5	0.9	1.1	-	-	-	-
35-39	2.0	2.9	1.0	2.2	3.2	1.1	-	-	-
40-44	4.2	6.4	2.0	4.6	6.9	2.2	2.4	-	-
45-49	8.5	13.2	3.9	9.5	14.5	4.4	5.2	7.6	-
50-54	17.2	25.7	9.0	19.2	28.4	10.1	8.6	12.3	-
55-59	31.4	49.5	14.1	34.7	54.4	15.4	17.9	25.4	11.6
60-64	52.3	84.0	23.4	57.9	92.0	26.0	28.7	44.2	16.3
65-69	81.1	136.0	34.3	89.8	149.7	37.4	43.5	71.1	22.6
70-74	114.6	198.7	49.0	124.4	216.1	51.7	65.7	102.7	40.8
75-79	140.8	258.4	58.5	152.5	282.6	61.7	79.4	128.2	48.7
80-84	156.4	301.3	70.1	165.9	322.2	73.5	108.9	206.4	59.1
85+	146.7	317.3	76.5	152.2	340.9	77.0	112.2	174.6	88.6

^a SEER 9 areas. Rates are per 100,000 and are age-adjusted to the 2000 U.S. standard population by 5-year age groups, unless noted.

^b SEER 9 areas. Rates are per 100,000 and are age-adjusted to the world standard population.

- Statistic not shown. Rate based on less than 25 cases for the time interval.

Table XXVI-3
URINARY BLADDER CANCER (Invasive)

U.S. DEATH RATES, AGE-ADJUSTED AND AGE-SPECIFIC RATES^a, BY RACE AND SEX

	All Races			Whites			Blacks		
	Total	Males	Females	Total	Males	Females	Total	Males	Females
<u>AGE-ADJUSTED RATES</u>									
<u>YEAR OF DEATH:</u>									
1975	5.5	9.8	2.8	5.6	10.1	2.7	5.0	6.9	3.6
1976	5.6	9.8	2.9	5.6	10.0	2.8	5.3	7.8	3.5
1977	5.5	9.7	2.9	5.6	9.9	2.8	5.2	7.6	3.6
1978	5.4	9.5	2.9	5.5	9.8	2.8	4.9	7.2	3.4
1979	5.2	9.3	2.7	5.3	9.6	2.7	5.0	7.6	3.3
1980	5.2	9.2	2.7	5.2	9.5	2.7	4.7	6.2	3.7
1981	5.1	9.0	2.7	5.1	9.3	2.6	4.9	7.2	3.4
1982	5.0	8.9	2.6	5.0	9.2	2.5	4.9	6.8	3.6
1983	4.9	8.8	2.5	4.9	9.0	2.5	4.7	7.2	3.2
1984	4.7	8.5	2.5	4.8	8.7	2.4	4.7	6.9	3.4
1985	4.7	8.4	2.4	4.7	8.7	2.4	4.5	6.9	3.0
1986	4.5	8.1	2.4	4.6	8.4	2.3	4.2	5.8	3.3
1987	4.4	7.9	2.3	4.5	8.1	2.3	4.4	6.5	3.1
1988	4.4	7.8	2.4	4.5	8.0	2.3	4.3	5.9	3.3
1989	4.5	8.0	2.4	4.5	8.2	2.3	4.6	7.0	3.2
1990	4.5	8.0	2.4	4.6	8.2	2.4	4.4	6.4	3.2
1991	4.4	7.9	2.3	4.5	8.1	2.3	4.4	6.6	3.1
1992	4.5	7.9	2.4	4.5	8.1	2.4	4.3	6.7	3.1
1993	4.5	8.1	2.3	4.5	8.3	2.3	4.2	6.4	2.9
1994	4.5	7.9	2.4	4.5	8.1	2.4	4.3	6.4	3.2
1995	4.4	7.8	2.3	4.4	8.1	2.2	4.0	5.8	3.1
1996	4.4	7.8	2.4	4.5	8.1	2.3	4.2	5.9	3.1
1997	4.4	7.6	2.4	4.5	7.9	2.4	4.0	5.9	3.0
1998	4.4	7.7	2.3	4.5	8.0	2.3	3.9	5.6	3.0
1999	4.4	7.7	2.3	4.5	7.9	2.2	4.0	5.8	3.0
2000	4.3	7.6	2.3	4.5	8.0	2.3	3.8	5.7	2.7
<u>AGE-ADJUSTED RATES, 1996-2000</u>									
<u>AGE AT DEATH:</u>									
All ages	4.4	7.7	2.3	4.5	8.0	2.3	4.0	5.8	3.0
Under 65	0.7	1.1	0.4	0.8	1.2	0.4	0.8	1.0	0.5
65 and over	29.5	53.0	15.8	30.3	55.1	15.7	26.1	38.5	19.7
All ages (world std.) ^b	2.2	3.7	1.1	2.3	3.9	1.1	2.1	2.9	1.5
<u>AGE-SPECIFIC RATES, 1996-2000</u>									
<u>AGE AT DEATH:</u>									
<1	-	-	-	-	-	-	-	-	-
1-4	-	-	-	-	-	-	-	-	-
5-9	-	-	-	-	-	-	-	-	-
10-14	-	-	-	-	-	-	-	-	-
15-19	-	-	-	-	-	-	-	-	-
20-24	-	-	-	-	-	-	-	-	-
25-29	-	-	-	-	-	-	-	-	-
30-34	0.0	-	-	0.0	-	-	-	-	-
35-39	0.1	0.2	0.1	0.1	0.2	0.1	0.2	-	-
40-44	0.3	0.4	0.2	0.3	0.4	0.2	0.3	0.5	-
45-49	0.8	1.1	0.4	0.8	1.2	0.4	0.9	1.2	0.6
50-54	1.8	2.7	0.9	1.8	2.8	0.9	1.9	2.8	1.1
55-59	3.5	5.5	1.7	3.6	5.7	1.6	3.8	5.4	2.5
60-64	6.9	10.6	3.5	7.1	11.2	3.3	6.5	8.2	5.2
65-69	11.8	19.1	5.6	12.3	20.1	5.5	10.5	13.9	8.1
70-74	20.0	32.8	10.1	20.5	34.0	9.9	18.7	25.5	14.2
75-79	29.9	51.7	14.9	30.7	53.7	14.7	27.2	39.5	19.7
80-84	45.3	81.3	24.6	46.4	84.0	24.5	39.5	62.5	28.2
85+	69.1	138.6	41.5	70.7	144.7	41.4	58.4	90.3	46.4

^a NCHS public use data file. Rates are per 100,000 and are age-adjusted to the 2000 U.S. standard population by 5-year age groups, unless noted.

^b NCHS public use data file. Rates are per 100,000 and are age-adjusted to the world standard population.

- Statistic not shown. Rate based on less than 25 cases for the time interval.

Table XXVI-4
URINARY BLADDER CANCER (Invasive and In Situ)

SURVIVAL RATES, BY RACE, SEX, DIAGNOSIS YEAR, STAGE AND AGE

	All Races			Whites			Blacks		
	Total	Males	Females	Total	Males	Females	Total	Males	Females
<u>5-YR RELATIVE SURVIVAL RATES</u>									
YEAR OF DIAGNOSIS:									
1960-1963 ^a	-	-	-	53	53	53	24	24	24
1970-1973 ^a	-	-	-	61	61	60	36	38	27
1974-1976 ^b	72.7	73.9	69.5	73.9	74.7	71.7	48.0	54.2	37.4 ^d
1977-1979 ^b	75.1	76.8	70.6	76.0	77.2	72.7	54.8	63.2	38.6 ^d
1980-1982 ^b	78.0	79.2	74.8	78.9	79.9	76.1	58.3	62.8	49.3 ^d
1983-1985 ^b	77.7	79.3	73.2	78.3	79.6	74.6	59.8	64.8	50.5 ^d
1986-1988 ^b	79.9	81.6	75.1	80.7	82.3	76.2	62.8	67.6	51.7 ^d
1989-1991 ^b	81.0	83.5	73.9	82.2	84.4	75.5	61.7	65.5	55.9
1992-1999 ^b	81.8 ^c	84.0 ^c	75.7 ^c	82.6 ^c	84.6 ^c	77.0 ^c	64.0 ^c	70.1 ^c	52.9 ^c
1992-1999 ^b									
ALL STAGES	81.8	84.0	75.7	82.6	84.6	77.0	64.0	70.1	52.9
LOCALIZED	94.4	95.3	91.8	94.6	95.4	92.1	86.7	89.9	79.7
REGIONAL	48.2	51.2	41.1	48.5	51.4	41.3	38.0	43.2 ^d	31.4 ^d
DISTANT	5.8	6.0	5.4	6.0	6.0	5.9	3.6	3.4	3.1
UNSTAGED	59.4	65.1	46.4	61.5	66.8	49.2	40.0 ^d	48.5 ^d	24.1 ^d
<u>STAGE DISTRIBUTION (%) 1992-1999^b</u>									
ALL STAGES									
Number of cases	31,273	23,171	8,102	28,726	21,410	7,316	1,360	886	474
Percent	100%	100%	100%	100%	100%	100%	100%	100%	100%
LOCALIZED	74	75	70	75	76	71	57	61	50
REGIONAL	19	18	21	18	18	20	28	25	34
DISTANT	3	3	5	3	3	4	7	6	7
UNSTAGED	4	4	5	4	4	5	9	9	9
<u>5-YR RELATIVE SURVIVAL RATES, 1992-1999^b</u>									
AGE AT DIAGNOSIS:									
<45	92.5	94.0	88.0	93.2	94.4	89.7	87.2	91.2	-
45-54	87.8	88.6	85.3	88.3	88.9	86.4	76.4	81.8	62.0 ^d
55-64	86.0	87.5	80.9	86.9	88.4	82.2	68.6	73.5	56.0 ^d
65-74	82.0	83.5	77.4	82.7	84.0	78.8	59.5	65.2	49.6 ^d
75+	73.6	77.0	66.6	74.7	78.0	67.7	51.5	54.0 ^d	48.5 ^d
Under 65	87.3	88.6	83.1	88.1	89.2	84.5	74.2	79.4	60.6 ^d
65 and over	78.6	81.1	72.2	79.5	81.8	73.4	55.9	61.0	49.1

a

Rates are based on End Results data from a series of hospital registries and one population-based registry.

b

Rates are from the SEER 9 areas. They are based on data from population-based registries in Connecticut, New Mexico, Utah, Iowa, Hawaii, Atlanta, Detroit, Seattle-Puget Sound and San Francisco-Oakland. Rates are based on follow-up of patients into 2000.

c

The difference in rates between 1974-1976 and 1992-1999 is statistically significant (p<.05).

d

The standard error of the survival rate is between 5 and 10 percentage points.

e

The standard error of the survival rate is greater than 10 percentage points.

-

Statistic could not be calculated.

Table XXVI-5
URINARY BLADDER CANCER

INCIDENCE (Invasive and *In Situ*), DEATH, AND SURVIVAL RATES (Invasive and *In Situ*)^c

By Year of Diagnosis/Death

All Races, Males and Females

Year of Diagnosis/Death

	1975- 1979	1980- 1984	1985	1986	1987	1988	1989	1990	1991	1992	1993	1994	1995	1996	1997	1998	1999	2000
Incidence																		
SEER ^a	19.6	20.4	20.7	21.0	21.6	20.8	21.0	21.1	20.9	21.2	21.2	20.8	20.6	20.7	20.9	21.4	21.5	21.3
Mortality																		
U.S. ^b	5.5	5.0	4.7	4.5	4.4	4.4	4.5	4.5	4.4	4.5	4.5	4.5	4.4	4.4	4.4	4.4	4.4	4.3
SEER ^a	5.5	4.9	4.6	4.4	4.1	4.3	4.2	4.4	4.3	4.3	4.4	4.2	4.1	4.2	4.2	4.1	4.0	4.1
Relative Survival Rates (SEER ^a)																		
1-year	87.4	89.4	89.3	90.3	90.3	90.9	91.4	90.1	90.1	90.4	90.9	91.1	91.2	90.3	91.8	91.5	90.6	
2-year	81.2	84.4	84.4	85.6	85.8	85.9	86.8	86.2	85.6	85.4	86.4	86.7	87.5	86.4	87.0	87.1		
3-year	78.3	81.6	81.2	82.6	83.2	84.0	84.1	83.3	83.5	83.0	84.2	85.2	85.1	84.7	84.1			
4-year	75.9	79.5	78.4	80.6	81.5	82.2	82.5	81.9	82.2	82.4	83.0	83.3	83.2	82.9				
5-year	74.3	78.0	77.2	79.0	80.3	80.3	81.0	81.2	80.8	80.6	81.7	82.2	83.0					
6-year	72.9	76.5	76.3	78.3	78.5	78.7	80.0	79.9	80.2	79.6	80.6	80.9						
7-year	71.3	75.4	75.2	77.6	77.4	77.6	78.6	79.2	78.1	78.0	79.5							
8-year	70.3	74.4	74.4	76.5	76.0	77.0	76.9	77.7	77.0	77.0								
9-year	69.2	73.1	74.0	75.9	74.4	76.5	76.7	76.0	76.1									
10-year	67.6	72.3	72.9	75.0	73.5	76.3	75.6	74.2										
11-year	66.3	71.5	72.9	73.5	73.5	75.5	74.7											
12-year	65.5	70.7	70.9	72.5	73.0	74.8												
13-year	64.9	70.2	70.3	71.6	72.5													
14-year	64.1	69.2	69.0	70.0														
15-year	63.4	68.4	67.6															
16-year	62.8	67.3																
17-year	62.4																	
18-year	62.3																	
19-year	62.3																	
20-year	62.2																	

^a Rates are from the SEER 9 areas.

^b Rates are from the NCHS public use data file.

^c Incidence and death rates are per 100,000 and are age-adjusted to the 2000 U.S. standard population by 5-year age groups. Survival rates are relative rates expressed as percents.

Table XXVI-6
URINARY BLADDER CANCER

INCIDENCE (Invasive and *In Situ*), DEATH, AND SURVIVAL RATES (Invasive and *In Situ*)^c

By Year of Diagnosis/Death

All Races, Males

Year of Diagnosis/Death

	1975- 1979	1980- 1984	1985	1986	1987	1988	1989	1990	1991	1992	1993	1994	1995	1996	1997	1998	1999	2000
Incidence																		
SEER ^a	34.6	36.6	36.4	37.9	39.5	38.1	37.4	37.5	37.5	37.5	37.5	36.8	36.1	36.3	36.8	38.2	37.7	37.8
Mortality																		
U.S. ^b	9.6	8.9	8.4	8.1	7.9	7.8	8.0	8.0	7.9	7.9	8.1	7.9	7.8	7.8	7.6	7.7	7.7	7.6
SEER ^a	9.5	9.0	8.5	7.7	7.5	7.6	7.4	7.7	7.4	7.2	7.7	7.2	7.2	7.4	7.2	7.2	6.9	7.1
Relative Survival Rates (SEER ^a)																		
1-year	89.4	90.7	91.2	91.7	92.0	92.3	93.3	92.1	91.6	92.0	92.5	93.0	92.8	91.9	93.5	93.4	92.4	
2-year	83.3	86.0	86.2	87.0	87.8	87.1	89.3	88.4	87.7	87.6	88.8	88.5	89.2	88.0	89.1	89.1		
3-year	80.1	83.3	83.1	83.7	84.9	85.6	86.8	85.7	86.0	85.7	86.7	87.1	87.1	86.3	86.5			
4-year	77.6	81.0	80.1	81.6	83.3	84.0	85.1	84.3	84.8	85.3	85.1	85.2	85.0	84.3				
5-year	75.6	79.4	78.7	80.1	82.4	82.1	83.8	83.8	83.0	83.6	83.8	84.4	85.0					
6-year	74.2	77.9	77.9	79.3	80.7	80.8	82.2	82.3	82.1	82.9	83.2	82.8						
7-year	72.5	76.9	76.7	78.0	79.5	79.7	80.4	81.4	79.5	81.3	82.0							
8-year	71.2	75.9	75.6	77.2	77.8	79.3	78.6	79.9	78.4	80.0								
9-year	69.9	74.6	75.5	76.1	76.1	78.8	78.5	77.9	77.3									
10-year	68.3	73.8	74.3	75.5	75.4	78.6	77.3	76.8										
11-year	66.7	73.1	74.1	74.4	75.4	77.9	76.7											
12-year	65.8	72.1	71.9	73.6	74.4	77.9												
13-year	65.0	71.8	71.5	72.6	74.4													
14-year	64.4	70.6	70.0	71.5														
15-year	63.8	69.8	69.0															
16-year	62.7	68.5																
17-year	62.5																	
18-year	62.2																	
19-year	62.2																	
20-year	62.2																	

^a Rates are from the SEER 9 areas.

^b Rates are from the NCHS public use data file.

^c Incidence and death rates are per 100,000 and are age-adjusted to the 2000 U.S. standard population by 5-year age groups. Survival rates are relative rates expressed as percents.

Table XXVI-7
URINARY BLADDER CANCER

INCIDENCE (Invasive and *In Situ*), DEATH, AND SURVIVAL RATES (Invasive and *In Situ*)^c

By Year of Diagnosis/Death

All Races, Females

Year of Diagnosis/Death

	1975- 1979	1980- 1984	1985	1986	1987	1988	1989	1990	1991	1992	1993	1994	1995	1996	1997	1998	1999	2000
Incidence																		
SEER ^a	9.2	9.3	9.9	9.4	9.2	9.0	9.7	9.6	9.3	9.8	9.7	9.5	9.6	9.5	9.5	9.4	9.9	9.4
Mortality																		
U.S. ^b	2.8	2.6	2.4	2.4	2.3	2.4	2.4	2.4	2.3	2.4	2.3	2.4	2.3	2.4	2.4	2.3	2.3	2.3
SEER ^a	3.0	2.5	2.2	2.4	2.0	2.4	2.2	2.5	2.4	2.5	2.4	2.5	2.1	2.2	2.3	2.1	2.2	2.2
Relative Survival Rates (SEER ^a)																		
1-year	81.8	85.7	84.0	86.5	84.9	86.9	85.9	84.2	85.8	85.8	86.3	85.8	86.8	85.9	87.1	86.0	85.7	
2-year	75.6	79.8	79.5	81.8	79.5	82.3	79.9	79.6	79.3	79.1	79.7	81.5	82.6	81.9	81.0	81.1		
3-year	73.2	77.0	76.0	79.5	78.0	79.2	76.4	76.0	76.3	75.2	77.4	79.8	79.7	80.3	77.6			
4-year	71.2	75.1	74.1	78.0	75.8	77.1	75.1	74.9	75.0	74.3	77.0	78.0	78.4	79.3				
5-year	70.6	74.1	73.2	76.1	74.0	75.1	73.3	73.7	74.7	72.3	76.0	76.4	76.9					
6-year	69.4	72.7	72.0	75.9	71.8	72.9	73.3	73.0	74.7	70.6	73.5	75.6						
7-year	68.2	71.2	71.4	75.9	71.1	71.5	73.3	72.9	74.1	69.2	72.8							
8-year	68.0	70.5	71.1	74.8	70.7	70.5	72.5	71.8	73.2	68.9								
9-year	67.3	69.1	70.0	74.8	69.4	70.0	71.9	70.9	72.8									
10-year	66.1	68.0	69.3	73.6	67.9	69.9	71.4	67.3										
11-year	65.3	67.2	69.3	71.2	67.7	68.9	69.4											
12-year	64.7	66.8	68.5	69.5	67.7	66.2												
13-year	64.6	66.0	67.3	69.1	65.9													
14-year	63.5	65.6	66.6	66.4														
15-year	62.5	64.8	64.4															
16-year	62.5	64.3																
17-year	62.3																	
18-year	62.3																	
19-year	62.3																	
20-year	61.9																	

^a Rates are from the SEER 9 areas.

^b Rates are from the NCHS public use data file.

^c Incidence and death rates are per 100,000 and are age-adjusted to the 2000 U.S. standard population by 5-year age groups. Survival rates are relative rates expressed as percents.

Table XXVI-8
URINARY BLADDER CANCER (Invasive and In Situ)

Percent Diagnosed With Cancer In 10, 20 and 30 Years and In Remaining Lifetime,
 Given Cancer Free At Current Age By Race and Sex

Lifetime Risk (Percent) of Being Diagnosed (12 SEER Areas) With Cancer and
 Lifetime Risk (Percent) of Dying (Total U.S.) From Cancer

1998-2000

All Races

Current Age	Males				Females			
	+10 yrs	+20 yrs	+30 yrs	Eventually	+10 yrs	+20 yrs	+30 yrs	Eventually
0	0.00	0.00	0.01	3.52	0.00	0.00	0.00	1.13
10	0.00	0.01	0.02	3.58	0.00	0.00	0.01	1.15
20	0.00	0.02	0.11	3.60	0.00	0.01	0.04	1.15
30	0.02	0.10	0.41	3.64	0.01	0.03	0.13	1.15
40	0.09	0.40	1.21	3.68	0.03	0.12	0.35	1.16
50	0.32	1.16	2.51	3.72	0.10	0.33	0.70	1.15
60	0.90	2.36	3.43	3.66	0.25	0.64	0.99	1.10

Lifetime Risk of Being Diagnosed = 3.52%
 Lifetime Risk of Dying = 0.73%

Lifetime Risk of Being Diagnosed = 1.13%
 Lifetime Risk of Dying = 0.31%

Whites

Current Age	Males				Females			
	+10 yrs	+20 yrs	+30 yrs	Eventually	+10 yrs	+20 yrs	+30 yrs	Eventually
0	0.00	0.00	0.01	3.91	0.00	0.00	0.00	1.22
10	0.00	0.01	0.02	3.97	0.00	0.00	0.01	1.23
20	0.01	0.02	0.12	3.99	0.00	0.01	0.04	1.24
30	0.02	0.11	0.46	4.03	0.01	0.04	0.14	1.24
40	0.10	0.45	1.36	4.07	0.03	0.14	0.39	1.24
50	0.36	1.31	2.81	4.10	0.11	0.37	0.77	1.23
60	1.01	2.62	3.77	4.01	0.27	0.69	1.06	1.17

Lifetime Risk of Being Diagnosed = 3.91%
 Lifetime Risk of Dying = 0.78%

Lifetime Risk of Being Diagnosed = 1.22%
 Lifetime Risk of Dying = 0.32%

Blacks

Current Age	Males				Females			
	+10 yrs	+20 yrs	+30 yrs	Eventually	+10 yrs	+20 yrs	+30 yrs	Eventually
0	0.00	0.00	0.00	1.42	0.00	0.00	0.00	0.78
10	0.00	0.00	0.01	1.47	0.00	0.00	0.00	0.80
20	0.00	0.01	0.06	1.48	0.00	0.00	0.02	0.80
30	0.01	0.06	0.21	1.52	0.00	0.02	0.09	0.81
40	0.05	0.21	0.59	1.56	0.02	0.09	0.26	0.82
50	0.17	0.57	1.14	1.62	0.08	0.25	0.50	0.83
60	0.47	1.13	1.61	1.68	0.18	0.46	0.74	0.82

Lifetime Risk of Being Diagnosed = 1.42%
 Lifetime Risk of Dying = 0.38%

Lifetime Risk of Being Diagnosed = 0.78%
 Lifetime Risk of Dying = 0.32%

Table XXVI-9
URINARY BLADDER CANCER

AGE-ADJUSTED SEER INCIDENCE (Invasive and *In Situ*) AND U.S. DEATH RATES

By Race/Ethnicity and Sex

Incidence^a

RACE/ETHNICITY	Rate 1996-2000			Trend 1992-2000		
	Rate per 100,000 persons			APC (%)		
	Total	Males	Females	Total	Males	Females
All Races	20.3	36.0	9.1	-0.1	-0.1	-0.5
White	22.3	39.6	9.8	0.0	0.0	-0.4 ^d
White Hispanic ^b	10.7	18.9	5.1	-1.0	-0.8	-1.7
White Non-Hispanic ^b	23.1	40.9	10.2	0.2	0.0	-0.1
Black	12.6	20.4	7.6	0.3	0.2	0.8
Asian/Pacific Islander	9.7	16.5	4.5	0.1	0.3	0.4
Amer Ind/Alaska Nat	5.3	8.8	-	-	-	-
Hispanic ^b	10.4	18.3	4.9	-0.9	-0.6	-1.7

Mortality^c

RACE/ETHNICITY	Rate 1996-2000			Trend 1992-2000		
	Rate per 100,000 persons			APC (%)		
	Total	Males	Females	Total	Males	Females
All Races	4.4	7.7	2.3	-0.3 ^d	-0.6 ^d	-0.5
White	4.5	8.0	2.3	-0.2	-0.4 ^d	-0.4
White Hispanic ^b	2.5	4.3	1.3	-0.3	-0.3	-0.8
White Non-Hispanic ^b	4.5	8.1	2.3	0.0	-0.4 ^d	0.0
Black	4.0	5.8	3.0	-1.5 ^d	-1.8 ^d	-1.1
Asian/Pacific Islander	1.8	2.7	1.0	-2.8 ^d	-1.6	-4.2
Amer Ind/Alaska Nat	1.5	2.5	0.9	-1.6	-	-
Hispanic ^b	2.4	4.2	1.2	-0.3	-0.4	-0.6

The APC is the Annual Percent Change over the time interval.

- Statistic not shown. Rate based on less than 25 cases for the time interval. Trend based on less than 10 cases for at least one year within the time interval.

^a Incidence data are from the 12 SEER areas (San Francisco, Connecticut, Detroit, Hawaii, Iowa, New Mexico, Seattle, Utah, Atlanta, San Jose-Monterey, Los Angeles, and Alaska Native Registry).

^b Hispanic and Non-Hispanic are not mutually exclusive from whites, blacks, Asian Pacific Islanders, and American Indians/Alaska Natives. Incidence data for Hispanics and Non-Hispanics do not include cases from Detroit, Hawaii and Alaska Native Registry. For mortality, information is included for all states except Connecticut, Oklahoma, New York, and New Hampshire.

^c Mortality data are analyzed from a public use file provided by the National Center for Health Statistics (NCHS).

^d The APC is significantly different from zero (p<.05).

Table XXVI-10
URINARY BLADDER CANCERAGE-ADJUSTED SEER INCIDENCE (Invasive and In Situ) RATES^a AND SEER DEATH RATES^b
By Registry, Race and Sex

	All Races			Whites			Blacks		
	Total	Males	Females	Total	Males	Females	Total	Males	Females
<u>SEER INCIDENCE RATES^a, 1996-2000</u>									
REGISTRY									
12 registries	20.3	36.0	9.1	22.3	39.6	9.8	12.6	20.4	7.6
11 registries	20.3	36.1	9.1	22.3	39.6	9.8	12.6	20.4	7.6
9 registries	21.2	37.4	9.5	23.0	40.7	10.2	12.7	20.4	7.8
San Francisco-Oakland	18.4	31.4	9.0	21.4	36.6	10.1	10.8	15.6	7.6
Connecticut	26.6	46.8	12.5	27.2	47.9	12.8	13.1	23.9	6.7
Metropolitan Detroit	24.3	44.0	10.9	27.0	49.4	11.6	14.1	22.2	8.8
Hawaii	12.9	21.3	5.9	21.4	35.3	9.0	-	-	-
Iowa	20.8	38.0	8.7	20.7	37.7	8.6	-	-	-
New Mexico	16.2	26.7	8.0	17.0	28.0	8.4	-	-	-
Seattle-Puget Sound	23.7	42.6	9.6	24.7	44.1	10.1	13.4	22.1	-
Utah	17.6	31.3	7.2	17.9	31.9	7.3	-	-	-
Metropolitan Atlanta	18.3	33.1	8.8	20.6	37.0	9.6	11.4	19.6	7.0
San Jose-Monterey	18.3	32.1	8.2	20.5	36.0	9.4	-	-	-
Los Angeles	18.2	32.6	8.0	20.3	36.7	8.6	12.4	20.4	7.5
<u>SEER DEATH RATES^b, 1996-2000</u>									
REGISTRY									
12 registries	4.0	7.0	2.2	4.3	7.6	2.2	4.0	6.0	2.8
11 registries	4.0	7.0	2.2	4.3	7.6	2.2	4.0	6.1	2.9
9 registries	4.1	7.2	2.2	4.3	7.7	2.2	4.0	6.0	2.9
San Francisco-Oakland	3.8	6.2	2.3	4.1	6.9	2.4	4.5	5.7	3.7
Connecticut	4.8	8.6	2.6	5.0	8.8	2.7	3.3	-	-
Metropolitan Detroit	4.4	8.0	2.3	4.6	8.6	2.2	4.0	5.6	3.0
Hawaii	2.7	4.0	1.6	5.2	8.0	-	-	-	-
Iowa	4.0	7.5	2.0	4.0	7.6	2.0	-	-	-
New Mexico	3.6	5.9	2.0	3.7	6.1	2.0	-	-	-
Seattle-Puget Sound	4.2	7.4	1.9	4.4	7.8	2.0	-	-	-
Utah	3.7	6.4	1.9	3.8	6.5	1.9	-	-	-
Metropolitan Atlanta	4.5	7.8	2.8	4.6	7.7	2.8	4.4	8.3	2.8
San Jose-Monterey	3.5	5.9	1.9	3.9	6.5	2.2	-	-	-
Los Angeles	3.8	6.7	2.1	4.1	7.4	2.1	3.9	6.1	2.8

Note: San Jose-Monterey and Los Angeles are new SEER areas as of 1992 and their data are only used in tables where indicated.

^a SEER 9 areas. Incidence rates are per 100,000 and are age-adjusted to the 2000 U.S. standard population by 5-year age groups.

^b NCHS public use data file. Death rates are per 100,000 and are age-adjusted to the 2000 U.S. standard population by 5-year age groups.

- Statistic could not be calculated or populations are inadequate.

Table XXVI-11
URINARY BLADDER CANCER (Invasive)

AVERAGE ANNUAL AGE-ADJUSTED CANCER DEATH^a RATES BY STATE, 1996-2000

All Races, Males and Females

State	Rate	SE	Rank	PD	State	Rate	SE	Rank	PD
TOTAL U.S.	4.4	0.02							
High Five States									
Delaware	6.0 ^{bc}	0.40	(01)	36.4					
New Hampshire	5.8 ^{bc}	0.32	(02)	31.8					
Maine	5.8 ^{bc}	0.29	(03)	31.8					
Alaska	5.4 ^b	0.72	(04)	22.7					
New Jersey	5.2 ^{bc}	0.11	(05)	18.2					
Low Five States									
South Dakota	3.6 ^b	0.29	(47)	-18.2					
New Mexico	3.6 ^b	0.22	(48)	-18.2					
Mississippi	3.6 ^{bc}	0.16	(49)	-18.2					
Alabama	3.5 ^{bc}	0.13	(50)	-20.5					
Hawaii	2.7 ^{bc}	0.22	(51)	-38.6					
Alabama	3.5 ^{bc}	0.13	(50)	-20.5	Montana	4.7	0.32	(18)	6.8
Alaska	5.4 ^b	0.72	(04)	22.7	Nebraska	3.7 ^b	0.20	(45)	-15.9
Arizona	4.3	0.13	(29)	-2.3	Nevada	5.1 ^b	0.27	(06)	15.9
Arkansas	4.0	0.17	(35)	-9.1	New Hampshire	5.8 ^{bc}	0.32	(02)	31.8
California	4.1 ^c	0.05	(31)	-6.8	New Jersey	5.2 ^{bc}	0.11	(05)	18.2
Colorado	3.8 ^c	0.16	(43)	-13.6	New Mexico	3.6 ^b	0.22	(48)	-18.2
Connecticut	4.8	0.16	(10)	9.1	New York	4.8 ^c	0.07	(12)	9.1
Delaware	6.0 ^{bc}	0.40	(01)	36.4	North Carolina	3.9 ^c	0.10	(39)	-11.4
District of Columbia	4.5	0.40	(21)	2.3	North Dakota	4.3	0.34	(28)	-2.3
Florida	4.5	0.07	(22)	2.3	Ohio	4.7 ^c	0.09	(15)	6.8
Georgia	4.0	0.12	(33)	-9.1	Oklahoma	3.8 ^c	0.15	(44)	-13.6
Hawaii	2.7 ^{bc}	0.22	(51)	-38.6	Oregon	4.6	0.16	(19)	4.5
Idaho	4.3	0.28	(26)	-2.3	Pennsylvania	4.8 ^c	0.08	(13)	9.1
Illinois	4.5	0.09	(23)	2.3	Rhode Island	4.9	0.29	(09)	11.4
Indiana	4.7	0.13	(17)	6.8	South Carolina	4.1	0.15	(32)	-6.8
Iowa	4.0	0.15	(34)	-9.1	South Dakota	3.6 ^b	0.29	(47)	-18.2
Kansas	3.9	0.17	(37)	-11.4	Tennessee	3.9 ^c	0.12	(38)	-11.4
Kentucky	4.5	0.15	(20)	2.3	Texas	3.8 ^c	0.07	(42)	-13.6
Louisiana	3.9	0.14	(36)	-11.4	Utah	3.7 ^b	0.23	(46)	-15.9
Maine	5.8 ^{bc}	0.29	(03)	31.8	Vermont	5.0	0.41	(08)	13.6
Maryland	4.8	0.15	(11)	9.1	Virginia	4.2	0.12	(30)	-4.5
Massachusetts	5.0 ^c	0.12	(07)	13.6	Washington	4.3	0.13	(27)	-2.3
Michigan	4.8 ^c	0.10	(14)	9.1	West Virginia	4.7	0.21	(16)	6.8
Minnesota	4.3	0.13	(25)	-2.3	Wisconsin	4.4	0.13	(24)	0.0
Mississippi	3.6 ^{bc}	0.16	(49)	-18.2	Wyoming	3.9	0.42	(40)	-11.4
Missouri	3.9 ^c	0.11	(41)	-11.4					

^a NCHS public use data file. Rates are per 100,000 and are age-adjusted to the 2000 U.S. standard population by 5-year age groups.

^b Absolute percent difference between state rate and total U.S. rate is 15% or more.

^c Difference between state rate and total U.S. rate is statistically significant ($p \leq .0002$).

SE Standard error of the rate.

PD Percent difference between state rate and total U.S. rate.

Table XXVI-12
URINARY BLADDER CANCER (Invasive)

AVERAGE ANNUAL AGE-ADJUSTED CANCER DEATH^a RATES BY STATE, 1996-2000

All Races, Males

State	Rate	SE	Rank	PD	State	Rate	SE	Rank	PD
TOTAL U.S.	7.7	0.04							
High Five States									
Maine	10.7 ^{bc}	0.65	(01)	39.0					
Delaware	9.9 ^b	0.87	(02)	28.6					
New Hampshire	9.6 ^b	0.67	(03)	24.7					
New Jersey	9.4 ^{bc}	0.25	(04)	22.1					
Massachusetts	9.2 ^{bc}	0.28	(05)	19.5					
Low Five States									
Utah	6.4 ^b	0.47	(47)	-16.9					
Colorado	6.3 ^{bc}	0.33	(48)	-18.2					
Mississippi	6.1 ^{bc}	0.36	(49)	-20.8					
New Mexico	5.9 ^{bc}	0.44	(50)	-23.4					
Hawaii	4.0 ^{bc}	0.40	(51)	-48.1					
Alabama	6.4 ^{bc}	0.29	(46)	-16.9	Montana	8.2	0.67	(13)	6.5
Alaska	8.7	1.47	(06)	13.0	Nebraska	6.6	0.43	(44)	-14.3
Arizona	7.0	0.27	(34)	-9.1	Nevada	8.2	0.55	(14)	6.5
Arkansas	6.7	0.35	(41)	-13.0	New Hampshire	9.6 ^b	0.67	(03)	24.7
California	7.1 ^c	0.12	(31)	-7.8	New Jersey	9.4 ^{bc}	0.25	(04)	22.1
Colorado	6.3 ^{bc}	0.33	(48)	-18.2	New Mexico	5.9 ^{bc}	0.44	(50)	-23.4
Connecticut	8.6	0.35	(09)	11.7	New York	8.7 ^c	0.16	(08)	13.0
Delaware	9.9 ^b	0.87	(02)	28.6	North Carolina	6.9	0.24	(37)	-10.4
District of Columbia	6.8	0.84	(40)	-11.7	North Dakota	7.6	0.71	(25)	-1.3
Florida	7.6	0.14	(26)	-1.3	Ohio	8.5 ^c	0.20	(10)	10.4
Georgia	7.1	0.26	(32)	-7.8	Oklahoma	7.0	0.33	(36)	-9.1
Hawaii	4.0 ^{bc}	0.40	(51)	-48.1	Oregon	8.1	0.35	(17)	5.2
Idaho	7.5	0.57	(28)	-2.6	Pennsylvania	8.7 ^c	0.18	(07)	13.0
Illinois	7.8	0.19	(21)	1.3	Rhode Island	8.2	0.62	(15)	6.5
Indiana	8.3	0.28	(12)	7.8	South Carolina	6.9	0.33	(39)	-10.4
Iowa	7.5	0.34	(27)	-2.6	South Dakota	6.6	0.63	(45)	-14.3
Kansas	7.0	0.36	(35)	-9.1	Tennessee	6.9	0.27	(38)	-10.4
Kentucky	7.9	0.34	(19)	2.6	Texas	6.6 ^c	0.15	(43)	-14.3
Louisiana	6.7	0.31	(42)	-13.0	Utah	6.4 ^b	0.47	(47)	-16.9
Maine	10.7 ^{bc}	0.65	(01)	39.0	Vermont	7.9	0.86	(20)	2.6
Maryland	8.0	0.32	(18)	3.9	Virginia	7.3	0.27	(30)	-5.2
Massachusetts	9.2 ^{bc}	0.28	(05)	19.5	Washington	7.6	0.27	(24)	-1.3
Michigan	8.5 ^c	0.22	(11)	10.4	West Virginia	8.1	0.47	(16)	5.2
Minnesota	7.8	0.30	(23)	1.3	Wisconsin	7.8	0.27	(22)	1.3
Mississippi	6.1 ^{bc}	0.36	(49)	-20.8	Wyoming	7.4	0.95	(29)	-3.9
Missouri	7.1	0.26	(33)	-7.8					

^a NCHS public use data file. Rates are per 100,000 and are age-adjusted to the 2000 U.S. standard population by 5-year age groups.

^b Absolute percent difference between state rate and total U.S. rate is 15% or more.

^c Difference between state rate and total U.S. rate is statistically significant ($p \leq .0002$).

SE Standard error of the rate.

PD Percent difference between state rate and total U.S. rate.

Table XXVI-13
URINARY BLADDER CANCER (Invasive)

AVERAGE ANNUAL AGE-ADJUSTED CANCER DEATH^a RATES BY STATE, 1996-2000

All Races, Females

State	Rate	SE	Rank	PD	State	Rate	SE	Rank	PD
TOTAL U.S.	2.3	0.02							
High Five States									
Delaware	3.5 ^b	0.40	(01)	52.2					
New Hampshire	3.4 ^b	0.31	(02)	47.8					
Vermont	3.3 ^b	0.43	(03)	43.5					
District of Columbia	3.2 ^b	0.43	(04)	39.1					
Rhode Island	3.1 ^b	0.30	(05)	34.8					
Low Five States									
Utah	1.9 ^b	0.21	(47)	-17.4					
Oklahoma	1.8 ^{bc}	0.13	(48)	-21.7					
South Dakota	1.8 ^b	0.27	(49)	-21.7					
Wyoming	1.7 ^b	0.36	(50)	-26.1					
Hawaii	1.6 ^b	0.23	(51)	-30.4					
Alabama	1.9 ^{bc}	0.12	(46)	-17.4	Montana	2.4	0.30	(23)	4.3
Alaska	3.0 ^b	0.69	(06)	30.4	Nebraska	1.9 ^b	0.19	(44)	-17.4
Arizona	2.3	0.13	(25)	0.0	Nevada	2.8 ^b	0.26	(09)	21.7
Arkansas	2.2	0.16	(30)	-4.3	New Hampshire	3.4 ^b	0.31	(02)	47.8
California	2.1	0.05	(33)	-8.7	New Jersey	2.8 ^{bc}	0.10	(10)	21.7
Colorado	2.1	0.15	(35)	-8.7	New Mexico	2.0	0.21	(41)	-13.0
Connecticut	2.6	0.15	(13)	13.0	New York	2.6 ^c	0.07	(14)	13.0
Delaware	3.5 ^b	0.40	(01)	52.2	North Carolina	2.2	0.10	(32)	-4.3
District of Columbia	3.2 ^b	0.43	(04)	39.1	North Dakota	1.9 ^b	0.30	(45)	-17.4
Florida	2.3	0.06	(27)	0.0	Ohio	2.5	0.08	(17)	8.7
Georgia	2.2	0.11	(28)	-4.3	Oklahoma	1.8 ^{bc}	0.13	(48)	-21.7
Hawaii	1.6 ^b	0.23	(51)	-30.4	Oregon	2.2	0.15	(29)	-4.3
Idaho	2.0	0.25	(38)	-13.0	Pennsylvania	2.5	0.07	(18)	8.7
Illinois	2.5	0.08	(15)	8.7	Rhode Island	3.1 ^b	0.30	(05)	34.8
Indiana	2.5	0.12	(16)	8.7	South Carolina	2.4	0.15	(21)	4.3
Iowa	2.0	0.14	(39)	-13.0	South Dakota	1.8 ^b	0.27	(49)	-21.7
Kansas	2.0	0.15	(43)	-13.0	Tennessee	2.1	0.11	(34)	-8.7
Kentucky	2.4	0.14	(20)	4.3	Texas	2.1 ^c	0.07	(37)	-8.7
Louisiana	2.4	0.14	(22)	4.3	Utah	1.9 ^b	0.21	(47)	-17.4
Maine	2.7 ^b	0.25	(11)	17.4	Vermont	3.3 ^b	0.43	(03)	43.5
Maryland	3.0 ^{bc}	0.14	(07)	30.4	Virginia	2.3	0.11	(26)	0.0
Massachusetts	2.7 ^b	0.11	(12)	17.4	Washington	2.0	0.11	(40)	-13.0
Michigan	2.4	0.09	(19)	4.3	West Virginia	2.9 ^b	0.21	(08)	26.1
Minnesota	2.2	0.12	(31)	-4.3	Wisconsin	2.3	0.12	(24)	0.0
Mississippi	2.1	0.16	(36)	-8.7	Wyoming	1.7 ^b	0.36	(50)	-26.1
Missouri	2.0	0.10	(42)	-13.0					

^a NCHS public use data file. Rates are per 100,000 and are age-adjusted to the 2000 U.S. standard population by 5-year age groups.

^b Absolute percent difference between state rate and total U.S. rate is 15% or more.

^c Difference between state rate and total U.S. rate is statistically significant ($p \leq .0002$).

SE Standard error of the rate.

PD Percent difference between state rate and total U.S. rate.

Table XXVI-14
URINARY BLADDER CANCER (Invasive)

Estimated United States Cancer Prevalence Counts^a on January 1, 2000
By Race/Ethnicity, Sex and Years Since Diagnosis

Years Since Diagnosis	0 to <5	5 to <10	10 to <15	15 to <20	20 to <25	0 to <10	0 to <25	>=25 ^f	Complete ^g
<u>Race/Sex</u>									
All Races ^b	180,332	118,309	77,702	47,214	26,184	298,641	449,741	29,395	479,136
Males	134,833	88,472	57,731	34,455	18,022	223,305	333,513	20,020	353,533
Females	45,499	29,837	19,971	12,759	8,162	75,336	116,228	9,375	125,603
White ^b	168,728	111,753	74,003	45,243	24,876	280,481	424,603	23,179	447,782
Males	126,775	83,817	54,991	33,040	17,154	210,592	315,777	15,751	331,528
Females	41,953	27,936	19,012	12,203	7,722	69,889	108,826	7,428	116,254
Black ^b	7,124	4,231	2,527	1,261	726	11,355	15,869	+	+
Males	4,690	2,876	1,882	878	536	7,566	10,862	+	+
Females	2,434	1,355	645	383	-	3,789	5,007	113	5,120
Asian/Pacific Islander ^c	2,043	1,186	+	+	+	3,229	+	+	+
Males	1,513	910	+	+	+	2,423	+	+	+
Females	530	276	+	+	+	806	+	+	+
Hispanic ^d	4,422	2,829	+	+	+	7,251	+	+	+
Males	3,382	2,143	+	+	+	5,525	+	+	+
Females	1,040	686	+	+	+	1,726	+	+	+

Estimated prevalence percent^a on January 1, 2000, of the SEER 11 population diagnosed in the previous 10 years
By Age at Prevalence, Race/Ethnicity and Sex

Age at Prevalence	Age Specific (Crude)										Age-Adjusted ^e
	All Ages	0-9	10-19	20-29	30-39	40-49	50-59	60-69	70-79	80+	All Ages
<u>Race/Sex</u>											
All Races ^c	0.0901%	-	-	0.0017%	0.0064%	0.0271%	0.1061%	0.3191%	0.6225%	0.7205%	0.1013%
Males	0.1373%	-	-	0.0021%	0.0094%	0.0417%	0.1691%	0.5296%	1.1155%	1.4651%	0.1811%
Females	0.0440%	-	-	0.0013%	0.0034%	0.0128%	0.0463%	0.1335%	0.2550%	0.3329%	0.0436%
White ^c	0.1069%	-	-	0.0021%	0.0073%	0.0309%	0.1207%	0.3665%	0.6915%	0.7723%	0.1129%
Males	0.1622%	-	-	0.0027%	0.0102%	0.0467%	0.1899%	0.6014%	1.2411%	1.5966%	0.2013%
Females	0.0521%	-	-	0.0015%	0.0041%	0.0149%	0.0533%	0.1540%	0.2781%	0.3510%	0.0483%
Black ^c	0.0306%	-	-	-	-	0.0152%	0.0545%	0.1349%	0.2918%	0.3605%	0.0484%
Males	0.0440%	-	-	-	-	0.0257%	0.0885%	0.2285%	0.4906%	0.6462%	0.0821%
Females	0.0184%	-	-	-	-	0.0260%	0.0610%	0.1608%	0.2325%	0.2325%	0.0259%
Asian/Pacific Islander ^c	0.0357%	-	-	-	-	0.0109%	0.0391%	0.1198%	0.2856%	0.4002%	0.0459%
Males	0.0551%	-	-	-	-	0.0183%	0.0640%	0.2017%	0.4855%	0.7179%	0.0790%
Females	0.0174%	-	-	-	-	0.0169%	0.0532%	0.1342%	0.1773%	0.1773%	0.0205%
Hispanic ^d	0.0199%	-	-	-	0.0034%	0.0107%	0.0451%	0.1396%	0.2953%	0.4252%	0.0496%
Males	0.0294%	-	-	-	0.0044%	0.0142%	0.0767%	0.2497%	0.5465%	0.8270%	0.0908%
Females	0.0100%	-	-	-	-	0.0073%	0.0164%	0.0496%	0.1167%	0.2108%	0.0210%

^a US 2000 cancer prevalence counts are based on 2000 cancer prevalence proportions from the SEER registries and 1/1/2000 US population estimates based on the average of 1999 and 2000 population estimates from the US Bureau of the Census. Prevalence was calculated using the First Malignant Primary Only for a person.
^b ^c ^d Statistics based on b) SEER 9 Areas c) SEER 11 Areas d) SEER 11 Areas excluding Hawaii and Detroit.
^e Percentages are age-adjusted to the 2000 US standard population by 5-year age groups.
^f ^g (f) Cases diagnosed 25 years or more ago were estimated using the completeness index method (Capocaccia et. al. 1997, Merrill et. al. 2000). (g) Complete prevalence is obtained by summing 0 to <25 with >=25.
 - Statistics not shown. Rate based on less than 25 cases estimated alive for the time interval.
 + Not available.

SEER Incidence, Delay Adjusted Incidence and US Death Rates+ Urinary Bladder Cancer, by Race and Sex

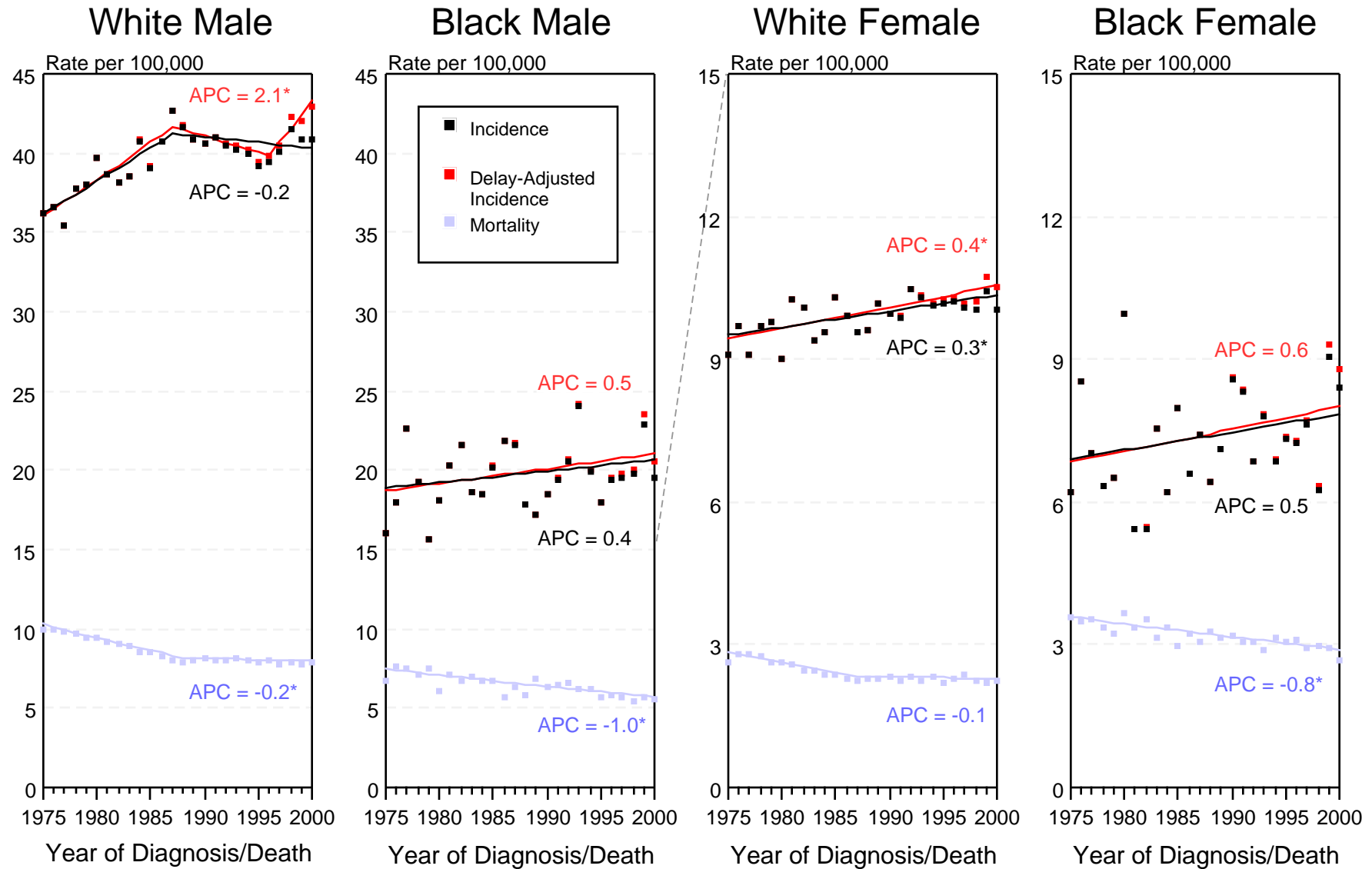


Figure XXVI-1

+ Source: SEER 9 areas and NCHS public use data file. Rates are age-adjusted to the 2000 US standard million population by 5-year age groups. Regression lines and APCs are calculated using the Joinpoint Regression Program. The APC is the Annual Percent Change for the regression line segments. The APC shown on the graph is for the most recent trend.

* The APC is significantly different from zero ($p < 0.05$).