

Table XX-1
OVARY CANCER (Invasive)

TRENDS IN SEER INCIDENCE^a AND U.S. MORTALITY^b USING THE JOINTPOINT REGRESSION PROGRAM, 1975-2001
WITH UP TO THREE JOINTPOINTS BY RACE AND AGE

		<u>Joinpoint Segment 1</u>		<u>Joinpoint Segment 2</u>		<u>Joinpoint Segment 3</u>		<u>Joinpoint Segment 4</u>	
		Year	APC	Year	APC	Year	APC	Year	APC
<u>SEER Cancer Incidence^a</u>									
All Races	All Ages	1975-1985	0.2	1985-2001	-0.8 ^c				
All Races	Under 65	1975-2001	-1.1 ^c						
All Races	65 and Over	1975-1990	1.4 ^c	1990-2001	-1.2 ^c				
White	All Ages	1975-1987	0.2	1987-2001	-0.9 ^c				
White	Under 65	1975-2001	-1.1 ^c						
White	65 and Over	1975-1990	1.4 ^c	1990-2001	-0.9 ^c				
Black	All Ages	1975-2001	-0.6 ^c						
Black	Under 65	1975-2001	-1.4 ^c						
Black	65 and Over	1975-2001	0.3						
<u>SEER Delay-Adjusted Incidence^a</u>									
All Races	All Ages	1975-1985	0.2	1985-2001	-0.7 ^c				
White	All Ages	1975-2001	-0.3 ^c						
Black	All Ages	1975-2001	-0.5 ^c						
<u>U.S. Cancer Mortality^b</u>									
All Races	All Ages	1975-1982	-1.2 ^c	1982-1992	0.3	1992-1998	-1.2 ^c	1998-2001	0.8
All Races	Under 65	1975-1980	-3.3 ^c	1980-2001	-1.5 ^c				
All Races	65 and Over	1975-1985	0.7 ^c	1985-1991	1.8 ^c	1991-2001	-0.2		
White	All Ages	1975-1981	-1.4 ^c	1981-1994	0.2	1994-1998	-1.7	1998-2001	1.2
White	Under 65	1975-1980	-3.3 ^c	1980-2001	-1.4 ^c				
White	65 and Over	1975-1984	0.5 ^c	1984-1991	1.7 ^c	1991-1999	-0.3	1999-2001	2.2
Black	All Ages	1975-2001	0.0						
Black	Under 65	1975-2001	-1.6 ^c						
Black	65 and Over	1975-1992	2.3 ^c	1992-2001	-1.1				

Joinpoint Regression Program Version 2.7, September 2003, National Cancer Institute. (<http://srab.cancer.gov/joinpoint/>).

^a The APC is the Annual Percent Change based on rates age-adjusted to the 2000 U.S. standard population by 5-year age groups. Trends are from the SEER 9 areas.

^b Trends are from the NCHS public use data file for the total US.

^c The APC is significantly different from zero (p<.05).

Table XX-2
OVARY CANCER (Invasive)

SEER INCIDENCE^a AND U.S. DEATH^b RATES, AGE-ADJUSTED AND AGE-SPECIFIC RATES, BY RACE

	Incidence ^a			US Death ^b		
	All Races, Females	White Females	Black Females	All Races, Females	White Females	Black Females
<u>AGE-SPECIFIC RATES, 1997-2001</u>						
AGE AT DIAGNOSIS/DEATH:						
<1	-	-	-	-	-	-
1-4	-	-	-	-	-	-
5-9	-	-	-	-	-	-
10-14	0.7	-	-	-	-	-
15-19	1.4	1.3	-	0.1	-	-
20-24	1.6	1.5	-	0.2	0.2	-
25-29	1.9	2.0	-	0.3	0.3	0.4
30-34	2.9	2.8	-	0.6	0.6	0.6
35-39	5.1	5.3	3.9	1.3	1.3	1.4
40-44	9.2	9.5	5.9	2.9	3.0	2.7
45-49	16.6	17.4	10.1	6.0	6.4	4.4
50-54	25.5	27.5	15.0	10.7	11.2	8.7
55-59	33.3	35.7	21.3	16.1	16.9	12.8
60-64	38.9	40.5	31.5	23.7	24.7	20.2
65-69	44.3	47.7	33.5	31.9	32.9	28.6
70-74	51.4	55.3	43.0	40.8	42.0	36.9
75-79	57.0	60.2	39.8	50.5	52.0	42.9
80-84	59.1	62.4	51.0	56.6	58.4	41.6
85+	50.8	52.9	43.4	55.3	56.6	45.8
<u>AGE-ADJUSTED RATES, 1997-2001</u>						
AGE AT DIAGNOSIS/DEATH:						
All ages	14.2	15.0	10.3	8.9	9.2	7.5
Under 65	8.8	9.2	5.9	3.7	3.9	3.1
65 and over	51.7	55.0	40.9	44.5	45.8	37.7
All ages(IARC world std) ^c	10.2	10.7	7.3	5.7	5.9	4.8

^a SEER 9 areas. Rates are per 100,000 and are age-adjusted to the 2000 U.S. standard population by 5-year age groups, unless noted.
^b NCHS public use data file for the total US. Rates are per 100,000 and are age-adjusted to the 2000 U.S. standard population by 5-year age groups, unless noted.
^c Rates are per 100,000 and are age-adjusted to the IARC world standard population.
- Statistic not shown. Rate based on less than 25 cases for the time interval.

Table XX-3
OVARY CANCER (Invasive)

SEER INCIDENCE^a AND U.S. DEATH^b RATES, AGE-ADJUSTED RATES, BY RACE AND AGE

	All Races, Females			White Females			Black Females		
	All	<65	65+	All	<65	65+	All	<65	65+
<u>SEER INCIDENCE RATES</u>									
YEAR OF DIAGNOSIS:									
1975	16.3	11.6	48.9	16.8	12.0	49.8	11.7	7.4	41.6
1976	15.9	11.2	47.8	16.6	11.9	49.5	11.4	7.4	39.3
1977	15.6	11.2	46.2	16.2	11.6	48.1	11.2	8.6	-
1978	15.4	10.8	47.2	16.1	11.4	49.3	10.0	6.1	36.8
1979	15.4	10.7	47.9	15.8	10.9	50.0	11.9	9.1	31.8
1980	15.4	10.6	48.6	16.2	11.2	50.9	11.7	7.4	41.6
1981	15.4	10.5	49.5	16.0	10.8	51.5	11.7	7.6	40.1
1982	15.6	10.1	53.4	16.1	10.5	55.1	12.3	7.4	46.2
1983	16.0	10.4	54.3	16.4	10.7	55.9	13.1	9.2	39.9
1984	16.3	11.0	52.9	17.2	11.7	54.8	10.9	5.8	46.3
1985	16.5	10.8	56.3	17.4	11.4	59.1	11.3	7.3	39.3
1986	15.0	9.9	50.4	15.7	10.5	51.7	10.6	6.2	41.5
1987	16.1	10.1	57.5	17.0	10.8	59.7	11.8	6.3	50.3
1988	15.3	9.6	54.6	16.0	10.1	56.9	11.6	6.6	45.6
1989	15.5	9.5	56.7	16.5	10.3	59.5	10.8	5.3	48.5
1990	15.4	9.4	56.5	16.3	10.1	59.2	10.1	5.6	41.7
1991	15.7	9.7	57.7	16.5	10.3	59.8	11.0	5.5	49.5
1992	14.9	9.3	53.4	15.6	9.7	56.6	11.0	7.5	35.2
1993	15.2	9.1	57.2	16.0	9.6	60.3	11.5	6.4	46.3
1994	14.4	8.8	53.2	14.9	9.1	55.4	12.4	6.5	53.5
1995	14.5	8.7	54.9	15.3	9.3	57.2	10.1	4.9	46.2
1996	14.1	8.4	53.6	15.3	9.2	57.1	9.0	4.5	40.0
1997	14.6	9.1	52.6	15.4	9.6	55.0	10.5	5.6	44.2
1998	14.2	8.7	52.4	14.9	9.1	55.5	10.9	6.2	43.3
1999	14.5	8.6	55.1	15.2	8.8	59.3	10.6	6.1	42.1
2000	13.9	8.8	49.2	14.7	9.3	52.0	10.7	5.5	46.0
2001	13.9	8.8	49.0	14.9	9.4	53.0	9.1	6.1	29.3
1997-2001	14.2	8.8	51.7	15.0	9.2	55.0	10.3	5.9	40.9
<u>U.S. DEATH RATES</u>									
YEAR OF DEATH:									
1975	9.8	5.8	37.5	10.2	6.0	38.8	7.2	4.6	24.6
1976	10.0	5.7	39.7	10.3	5.9	40.6	8.0	4.6	31.5
1977	9.6	5.5	38.0	9.9	5.6	39.1	7.4	4.3	29.2
1978	9.6	5.4	38.0	9.8	5.6	38.9	7.4	4.2	29.3
1979	9.3	5.1	38.6	9.6	5.2	39.7	7.5	4.4	28.9
1980	9.3	5.0	39.1	9.5	5.1	40.0	7.9	4.2	33.2
1981	9.2	4.9	38.9	9.5	5.1	39.8	7.4	3.7	32.4
1982	9.2	4.8	39.8	9.5	5.0	40.7	7.4	3.6	33.5
1983	9.2	4.7	40.3	9.4	4.8	41.4	7.7	4.1	32.3
1984	9.1	4.6	40.1	9.4	4.8	40.9	7.6	3.8	33.8
1985	9.1	4.6	40.2	9.3	4.7	41.3	7.3	3.7	31.9
1986	9.2	4.6	41.6	9.5	4.7	42.6	7.4	3.7	33.4
1987	9.2	4.5	41.9	9.5	4.6	42.8	7.6	3.5	35.5
1988	9.3	4.4	43.2	9.6	4.6	44.1	7.9	3.7	36.9
1989	9.2	4.3	43.2	9.5	4.5	44.3	7.4	3.3	36.2
1990	9.3	4.3	44.4	9.6	4.5	45.2	7.9	3.3	39.2
1991	9.5	4.3	45.4	9.7	4.5	46.1	8.4	3.4	42.5
1992	9.5	4.2	45.5	9.7	4.4	46.5	8.2	3.6	40.0
1993	9.1	4.0	44.1	9.3	4.2	44.9	7.7	3.0	40.4
1994	9.4	4.1	45.6	9.7	4.3	46.7	7.8	3.2	39.7
1995	9.1	4.0	44.8	9.5	4.2	46.1	7.4	2.9	38.0
1996	8.9	3.8	43.7	9.1	4.0	44.8	7.3	2.9	37.9
1997	8.9	3.8	44.7	9.2	3.9	45.6	7.9	3.1	41.2
1998	8.7	3.7	43.6	9.0	3.8	45.0	7.4	3.2	36.1
1999	8.8	3.7	43.6	9.1	3.9	44.8	7.4	3.1	37.3
2000	8.9	3.7	45.0	9.2	3.8	46.6	7.1	2.9	36.5
2001	9.0	3.7	45.3	9.3	3.9	46.8	7.5	3.2	37.4
1997-2001	8.9	3.7	44.5	9.2	3.9	45.8	7.5	3.1	37.7

^a SEER 9 areas. Rates are per 100,000 and are age-adjusted to the 2000 U.S. standard population by 5-year age groups, unless noted.

^b NCHS public use data file for the total US. Rates are per 100,000 and are age-adjusted to the IARC world standard population.

- Statistic not shown. Rate based on less than 25 cases for the time interval.

Table XX-4
OVARY CANCER (Invasive)

SURVIVAL RATES, BY RACE, DIAGNOSIS YEAR, STAGE AND AGE

	<u>All Races, Females</u>			<u>White Females</u>			<u>Black Females</u>		
	<u>All</u>	<u><65</u>	<u>65+</u>	<u>All</u>	<u><65</u>	<u>65+</u>	<u>All</u>	<u><65</u>	<u>65+</u>
<u>5-YR RELATIVE SURVIVAL RATES</u>									
YEAR OF DIAGNOSIS:									
1960-1963 ^a	-	-	-	32	-	-	32	-	-
1970-1973 ^a	-	-	-	36	-	-	32	-	-
1974-1976 ^b	37.0	43.1	23.8	36.6	42.8	23.5	41.2	44.9	33.2 ^d
1977-1979 ^b	38.5	46.7	22.4	37.9	46.0	22.8	39.8	49.1	10.1
1980-1982 ^b	39.1	48.3	23.5	38.7	48.2	23.4	39.3	47.1	22.8 ^d
1983-1985 ^b	41.0	50.7	25.9	40.3	50.0	25.8	41.5	52.3	20.7
1986-1988 ^b	39.7	51.1	23.8	39.4	51.0	24.0	36.6	47.4	19.8
1989-1991 ^b	40.9	53.4	25.2	41.2	54.1	25.5	30.7	42.8	16.5
1992-1994 ^b	43.0	55.3	27.4	42.1	55.0	26.8	46.2	56.5	28.4
1995-2000 ^b	44.0 ^c	55.7	28.8	44.0 ^c	56.1	28.9	37.9	49.7 ^c	20.8 ^c
1995-2000 ^b									
ALL STAGES	44.0	55.7	28.8	44.0	56.1	28.9	37.9	49.7	20.8
LOCALIZED	93.5	93.2	93.8	93.4	93.4	93.0	92.3 ^d	89.7 ^d	-
REGIONAL	68.8	73.8	59.1	68.3	73.6	58.7 ^d	65.1 ^d	71.3 ^d	-
DISTANT	28.5	37.1	19.6	29.0	38.0	20.1	20.6	27.7	12.7
UNSTAGED	23.5	41.9	13.2	22.7	40.9	13.0	28.1 ^d	-	15.9 ^d

STAGE DISTRIBUTION (%) 1995-2000^b

ALL STAGES									
Number of cases	9,645	5,043	4,602	8,316	4,216	4,100	640	348	292
Percent	100%	100%	100%	100%	100%	100%	100%	100%	100%
LOCALIZED	19	27	10	18	27	10	16	24	7
REGIONAL	7	8	5	7	8	5	8	9	6
DISTANT	68	61	75	68	62	76	67	61	74
UNSTAGED	7	4	10	7	4	10	9	6	13

5-YR RELATIVE SURVIVAL RATES, 1995-2000^b

AGE AT DIAGNOSIS:									
<45	72.3	-	-	73.1	-	-	71.4 ^d	-	-
45-54	52.9	-	-	54.1	-	-	37.5 ^d	-	-
55-64	46.4	-	-	46.8	-	-	39.9 ^d	-	-
65-74	35.7	-	-	35.7	-	-	24.0	-	-
75+	20.3	-	-	20.8	-	-	15.1 ^d	-	-
Under 65	55.7	-	-	56.1	-	-	49.7	-	-
65 and over	28.8	-	-	28.9	-	-	20.8	-	-

- ^a Rates are based on End Results data from a series of hospital registries and one population-based registry.
- ^b Rates are from the SEER 9 areas. They are based on data from population-based registries in Connecticut, New Mexico, Utah, Iowa, Hawaii, Atlanta, Detroit, Seattle-Puget Sound and San Francisco-Oakland. Rates are based on follow-up of patients into 2001.
- ^c The difference in rates between 1974-1976 and 1995-2000 is statistically significant (p<.05).
- ^d The standard error of the survival rate is between 5 and 10 percentage points.
- ^e The standard error of the survival rate is greater than 10 percentage points.
- Statistic could not be calculated.

Table XX-5
 OVARY CANCER (Invasive)

SURVIVAL RATES^a

By Year of Diagnosis

All Races, Females

Year of Diagnosis

	1975- 1979	1980- 1984	1985	1986	1987	1988	1989	1990	1991	1992	1993	1994	1995	1996	1997	1998	1999	2000	
Relative Survival Rates (SEER ^b)																			
1-year	65.1	70.6	72.2	69.2	71.0	69.7	72.0	72.0	72.8	74.9	72.5	72.1	73.8	74.6	77.1	75.9	74.0	76.5	
2-year	49.6	54.0	55.5	52.5	54.1	56.6	56.5	57.6	59.1	60.8	59.0	61.3	60.9	62.6	66.1	64.9	61.6		
3-year	42.9	46.8	48.2	46.3	46.6	49.2	47.6	49.1	49.8	51.9	49.5	53.9	51.9	53.6	57.4	55.9			
4-year	39.5	42.4	42.8	42.3	42.6	44.5	41.8	45.0	44.7	47.5	43.8	48.1	47.3	47.3	49.5				
5-year	37.6	40.2	39.9	38.7	39.2	41.2	39.1	42.0	41.6	43.5	39.9	45.7	43.8	43.2					
6-year	36.5	38.5	37.9	37.1	37.7	39.3	36.7	40.3	39.5	41.1	38.1	42.2	40.4						
7-year	35.4	37.9	36.4	36.1	37.1	38.3	35.7	39.2	37.8	39.7	37.4	40.4							
8-year	34.7	36.7	36.0	35.6	36.3	37.6	34.3	38.1	36.6	39.1	36.3								
9-year	34.4	35.9	35.1	35.3	36.0	37.0	34.3	37.4	36.1	38.7									
10-year	34.4	35.5	34.9	34.9	36.0	36.6	34.2	37.4	35.7										
11-year	34.2	35.4	34.9	34.9	35.9	36.5	34.2	37.1											
12-year	33.9	35.1	34.9	34.6	35.4	36.0	33.8												
13-year	33.9	34.8	34.9	34.6	35.2	35.1													
14-year	33.8	34.8	34.9	34.6	35.2														
15-year	33.4	34.8	34.9	34.6															
16-year	33.4	34.8	34.9																
17-year	33.4	34.8																	
18-year	33.4																		
19-year	33.4																		
20-year	33.4																		

^a Survival rates are relative rates expressed as percents.
^b Rates are from the SEER 9 areas.

Table XX-6
OVARY CANCER (Invasive)

Percent Diagnosed With Cancer In 10, 20 and 30 Years and In Remaining Lifetime,
 Given Cancer Free At Current Age By Race

Lifetime Risk (Percent) of Being Diagnosed (12 SEER Areas) With Cancer and
 Lifetime Risk (Percent) of Dying (Total U.S.) From Cancer

1999-2001

All Races

Current Age	+10 yrs	+20 yrs	+30 yrs	Eventually
0	0.00	0.01	0.03	1.48
10	0.01	0.03	0.07	1.49
20	0.02	0.06	0.19	1.49
30	0.04	0.17	0.44	1.48
40	0.13	0.40	0.76	1.45
50	0.28	0.64	1.04	1.35
60	0.38	0.79	1.06	1.12

Lifetime Risk of Being Diagnosed = 1.48%
 Lifetime Risk of Dying = 1.03%

Whites

Current Age	+10 yrs	+20 yrs	+30 yrs	Eventually
0	0.00	0.01	0.03	1.60
10	0.01	0.03	0.07	1.61
20	0.02	0.06	0.19	1.60
30	0.04	0.17	0.47	1.59
40	0.13	0.43	0.82	1.56
50	0.30	0.70	1.13	1.45
60	0.42	0.87	1.15	1.21

Lifetime Risk of Being Diagnosed = 1.60%
 Lifetime Risk of Dying = 1.08%

Blacks

Current Age	+10 yrs	+20 yrs	+30 yrs	Eventually
0	0.00	0.01	0.02	0.91
10	0.01	0.02	0.05	0.93
20	0.01	0.04	0.12	0.93
30	0.03	0.11	0.27	0.92
40	0.08	0.24	0.49	0.91
50	0.17	0.42	0.68	0.87
60	0.28	0.56	0.73	0.76

Lifetime Risk of Being Diagnosed = 0.91%
 Lifetime Risk of Dying = 0.73%

Table XX-7
OVARY CANCER (Invasive)

AGE-ADJUSTED SEER INCIDENCE AND U.S. DEATH RATES

By Race/Ethnicity and Sex

Incidence^a

RACE/ETHNICITY	Rate 1997-2001	Trend 1992-2001
	Rate per 100,000 persons	APC (%)
	<u>Females</u>	<u>Females</u>
All Races	13.9	-1.0 ^d
White	14.8	-0.8 ^d
White Hispanic ^b	11.7	-1.2
White Non-Hispanic ^b	15.3	-0.7 ^d
Black	10.1	-1.6
Asian/Pacific Islander	10.3	-0.6
Amer Ind/Alaska Nat	9.0	-
Hispanic ^b	11.4	-1.0

Mortality^c

RACE/ETHNICITY	Rate 1997-2001	Trend 1992-2001
	Rate per 100,000 persons	APC (%)
	<u>Females</u>	<u>Females</u>
All Races	8.9	-0.6 ^d
White	9.2	-0.5 ^d
White Hispanic ^b	6.3	-0.7
White Non-Hispanic ^b	9.3	-0.4
Black	7.5	-0.9 ^d
Asian/Pacific Islander	4.6	-0.5
Amer Ind/Alaska Nat	4.9	-0.1
Hispanic ^b	6.1	-0.6

The APC is the Annual Percent Change over the time interval.

- Statistic not shown. Rate based on less than 25 cases for the time interval. Trend based on less than 10 cases for at least one year within the time interval.

^a Incidence data are from the 12 SEER areas (San Francisco, Connecticut, Detroit, Hawaii, Iowa, New Mexico, Seattle, Utah, Atlanta, San Jose-Monterey, Los Angeles, and Alaska Native Registry).

^b Hispanic and Non-Hispanic are not mutually exclusive from Whites, Blacks, Asian Pacific Islanders, and American Indians/Alaska Natives. Incidence data for Hispanics and Non-Hispanics do not include cases from Detroit, Hawaii and Alaska Native Registry. For mortality, information is included for all states except Connecticut, Maine, Maryland, Oklahoma, New York, New Hampshire, North Dakota and Vermont.

^c Mortality data are analyzed from a public use file provided by the National Center for Health Statistics (NCHS).

^d The APC is significantly different from zero (p<.05).

Table XX-8
OVARY CANCER (Invasive)

AGE-ADJUSTED SEER INCIDENCE RATES^a AND SEER DEATH RATES^b
 By Registry, Race and Age

	All Races, Females			White Females			Black Females		
	All	<65	65+	All	<65	65+	All	<65	65+
<u>SEER INCIDENCE RATES^a, 1997-2001</u>									
REGISTRY									
12 registries	13.9	8.6	50.5	14.8	9.1	54.4	10.1	5.8	39.6
11 registries	13.9	8.6	50.5	14.8	9.1	54.4	10.1	5.8	39.6
9 registries	14.2	8.8	51.7	15.0	9.2	55.0	10.3	5.9	40.9
San Francisco-Oakland	14.1	9.2	47.6	15.4	9.8	54.4	10.8	6.9	37.2
Connecticut	14.4	9.2	50.6	15.0	9.6	52.5	6.0	4.0	-
Metropolitan Detroit	14.4	9.0	52.0	15.6	10.1	53.5	11.2	6.1	46.4
Hawaii	11.7	8.7	32.9	14.1	9.0	49.4	-	-	-
Iowa	14.8	9.1	54.2	14.8	9.0	54.5	-	-	-
New Mexico	12.3	7.7	43.9	12.3	7.6	44.1	-	-	-
Seattle-Puget Sound	16.3	9.3	64.4	16.9	9.6	67.0	10.9	-	-
Utah	13.6	8.2	51.1	13.8	8.3	51.9	-	-	-
Metropolitan Atlanta	13.4	7.6	53.0	14.5	8.4	56.9	10.9	6.0	44.3
San Jose-Monterey	13.0	8.3	45.8	14.0	8.6	51.6	-	-	-
Los Angeles	13.2	8.2	47.8	14.4	8.8	52.9	9.3	5.4	36.3
<u>SEER DEATH RATES^b, 1997-2001</u>									
REGISTRY									
12 registries	8.9	3.8	44.3	9.6	4.0	48.2	7.1	3.2	34.3
11 registries	8.9	3.8	44.3	9.6	4.0	48.1	7.1	3.1	34.3
9 registries	8.9	3.7	44.5	9.5	4.0	47.9	6.9	2.9	34.0
San Francisco-Oakland	8.7	4.1	40.5	9.9	4.6	47.1	7.5	3.6	34.0
Connecticut	8.8	3.8	43.3	9.1	4.0	44.9	4.2	-	-
Metropolitan Detroit	8.7	3.8	42.7	9.4	4.2	45.3	6.5	2.7	32.4
Hawaii	6.2	3.7	23.3	9.8	5.9	36.8	-	-	-
Iowa	9.6	3.7	50.0	9.6	3.8	50.3	-	-	-
New Mexico	7.9	3.7	37.4	8.0	3.7	37.8	-	-	-
Seattle-Puget Sound	10.5	3.9	56.2	10.9	4.0	58.9	-	-	-
Utah	8.5	3.3	44.7	8.6	3.3	44.8	-	-	-
Metropolitan Atlanta	8.9	3.3	47.1	9.1	3.3	49.1	8.2	3.3	42.2
San Jose-Monterey	8.6	3.5	43.6	9.6	3.9	48.9	-	-	-
Los Angeles	9.0	3.9	43.7	9.8	4.2	48.5	7.8	3.7	35.6

Note: San Jose-Monterey and Los Angeles are new SEER areas as of 1992 and their data are only used in tables where indicated.

^a SEER 9 areas. Incidence rates are per 100,000 and are age-adjusted to the 2000 U.S. standard population by 5-year age groups.

^b NCHS public use data file for the total US. Death rates are per 100,000 and are age-adjusted to the 2000 U.S. standard population by 5-year age groups.

- Statistic could not be calculated or populations are inadequate.

Table XX-9
OVARY CANCER (Invasive)

AVERAGE ANNUAL AGE-ADJUSTED CANCER DEATH^a RATES BY STATE, ALL RACES, 1997-2001

All Ages

State	Rate	SE	Rank	PD
TOTAL U.S.	8.9	0.03		
High Five States				
Washington	10.3 ^{bc}	0.26	(01)	15.7
South Dakota	10.1	0.68	(02)	13.5
Idaho	10.0	0.56	(03)	12.4
Oregon	10.0	0.32	(04)	12.4
Maine	9.8	0.50	(05)	10.1
Low Five States				
Texas	8.0 ^c	0.13	(47)	-10.1
South Carolina	8.0	0.27	(48)	-10.1
New Mexico	7.9	0.42	(49)	-11.2
Oklahoma	7.9	0.28	(50)	-11.2
Hawaii	6.2 ^{bc}	0.44	(51)	-30.3

Ages <65

State	Rate	SE	Rank	PD
TOTAL U.S.	3.7	0.02		
High Five States				
Rhode Island	4.7 ^b	0.45	(01)	27.0
West Virginia	4.4 ^b	0.31	(02)	18.9
Pennsylvania	4.4 ^{bc}	0.12	(03)	18.9
District of Columbia	4.3 ^b	0.58	(04)	16.2
Delaware	4.2	0.49	(05)	13.5
Low Five States				
Texas	3.2 ^c	0.09	(47)	-13.5
North Dakota	3.1 ^b	0.48	(48)	-16.2
Alaska	3.1 ^b	0.52	(49)	-16.2
Mississippi	3.0 ^b	0.22	(50)	-18.9
South Carolina	3.0 ^{bc}	0.18	(51)	-18.9

Ages 65+

State	Rate	SE	Rank	PD
TOTAL U.S.	44.5	0.21		
High Five States				
Idaho	55.5 ^b	3.68	(01)	24.7
Washington	55.0 ^{bc}	1.70	(02)	23.6
South Dakota	53.1 ^b	4.13	(03)	19.3
Oregon	50.3 ^b	2.00	(04)	13.0
Iowa	50.0 ^b	1.97	(05)	12.4
Low Five States				
Louisiana	39.9 ^b	1.61	(47)	-10.3
Oklahoma	39.4 ^b	1.71	(48)	-11.5
Rhode Island	38.8 ^b	2.86	(49)	-12.8
New Mexico	37.4 ^b	2.54	(50)	-16.0
Hawaii	23.3 ^{bc}	2.31	(51)	-47.6

For additional detailed cancer statistics by state, please visit the State Cancer Profiles website. <http://statecancerprofiles.cancer.gov/>

^a NCHS public use data file. Rates are per 100,000 and are age-adjusted to the 2000 U.S. standard population by 5-year age groups.
^b Absolute percent difference between state rate and total U.S. rate is 15% or more.
^c Difference between state rate and total U.S. rate is statistically significant (p<=.0002).
SE Standard error of the rate.
PD Percent difference between state rate and total U.S. rate.

Table XX-10
OVARY CANCER (Invasive)

Estimated United States Cancer Prevalence Counts^a on January 1, 2001
By Race/Ethnicity and Years Since Diagnosis

Years Since Diagnosis	0 to <5	5 to <10	10 to <15	15 to <20	20 to <25	0 to <11 ^e	0 to <26 ^e	>=26 ^g	Complete ^h
<u>Race</u>									
All Races ^b	53,367	28,304	21,790	18,522	13,537	86,619	137,976	29,026	167,002
White ^b	47,519	25,140	20,105	16,667	12,202	77,384	123,803	25,354	149,157
Black ^b	3,578	1,936	1,105	1,254	974	5,647	9,037	2,465	11,502
Asian/Pacific Islander ^c	1,586	858	+	+	+	2,557	+	+	+
Hispanic ^d	3,061	1,647	+	+	+	4,971	+	+	+

Estimated prevalence percent^a on January 1, 2001, of the SEER 11 population diagnosed in the previous 10 years
By Age at Prevalence and Race/Ethnicity

Age at Prevalence	All Ages	Age Specific (Crude)									Age-Adjusted ^f	
		0-9	10-19	20-29	30-39	40-49	50-59	60-69	70-79	80+	All Ages	
<u>Race</u>												
All Races ^c	0.0521%	0.0004%	0.0046%	0.0118%	0.0203%	0.0544%	0.1142%	0.1653%	0.1744%	0.1153%	0.0527%	
White ^c	0.0574%	0.0004%	0.0043%	0.0118%	0.0206%	0.0575%	0.1226%	0.1809%	0.1864%	0.1210%	0.0562%	
Black ^c	0.0274%	-	0.0046%	0.0098%	0.0159%	0.0325%	0.0618%	0.0929%	0.1248%	0.0837%	0.0332%	
Asian/Pacific Islander ^c	0.0425%	-	0.0068%	0.0133%	0.0223%	0.0536%	0.0984%	0.1195%	0.1181%	0.0728%	0.0435%	
Hispanic ^d	0.0263%	0.0006%	0.0050%	0.0111%	0.0163%	0.0412%	0.0821%	0.1268%	0.1403%	0.0885%	0.0410%	

^a US 2001 cancer prevalence counts are based on 2001 cancer prevalence proportions from the SEER registries and 1/1/2001 US population estimates based on the average of 2000 and 2001 population estimates from the US Bureau of the Census. Prevalence was calculated using the First Malignant Primary Only for a person.

^{b c d} Statistics based on b) SEER 9 Areas c) SEER 11 Areas d) SEER 11 Areas excluding Hawaii and Detroit.

^e Maximum limited-duration prevalence: 26 years for 1975-2001 SEER 9 data; 11 years for 1990-2001 SEER 11 data (used to calculate prevalence for Hispanics and Asian Pacific Islanders).

^f Percentages are age-adjusted to the 2000 US standard population by 5-year age groups.

^{g h} (g) Cases diagnosed 26 years or more ago were estimated using the completeness index method (Capocaccia et. al. 1997, Merrill et. al. 2000). (h) Complete prevalence is obtained by summing 0 to <26 and >=26.

- Statistic not shown. Statistic based on fewer than 5 cases estimated alive in SEER for the time interval.

+ Not available.

SEER Incidence, Delay Adjusted Incidence and US Death Rates+ Ovary Cancer, by Race

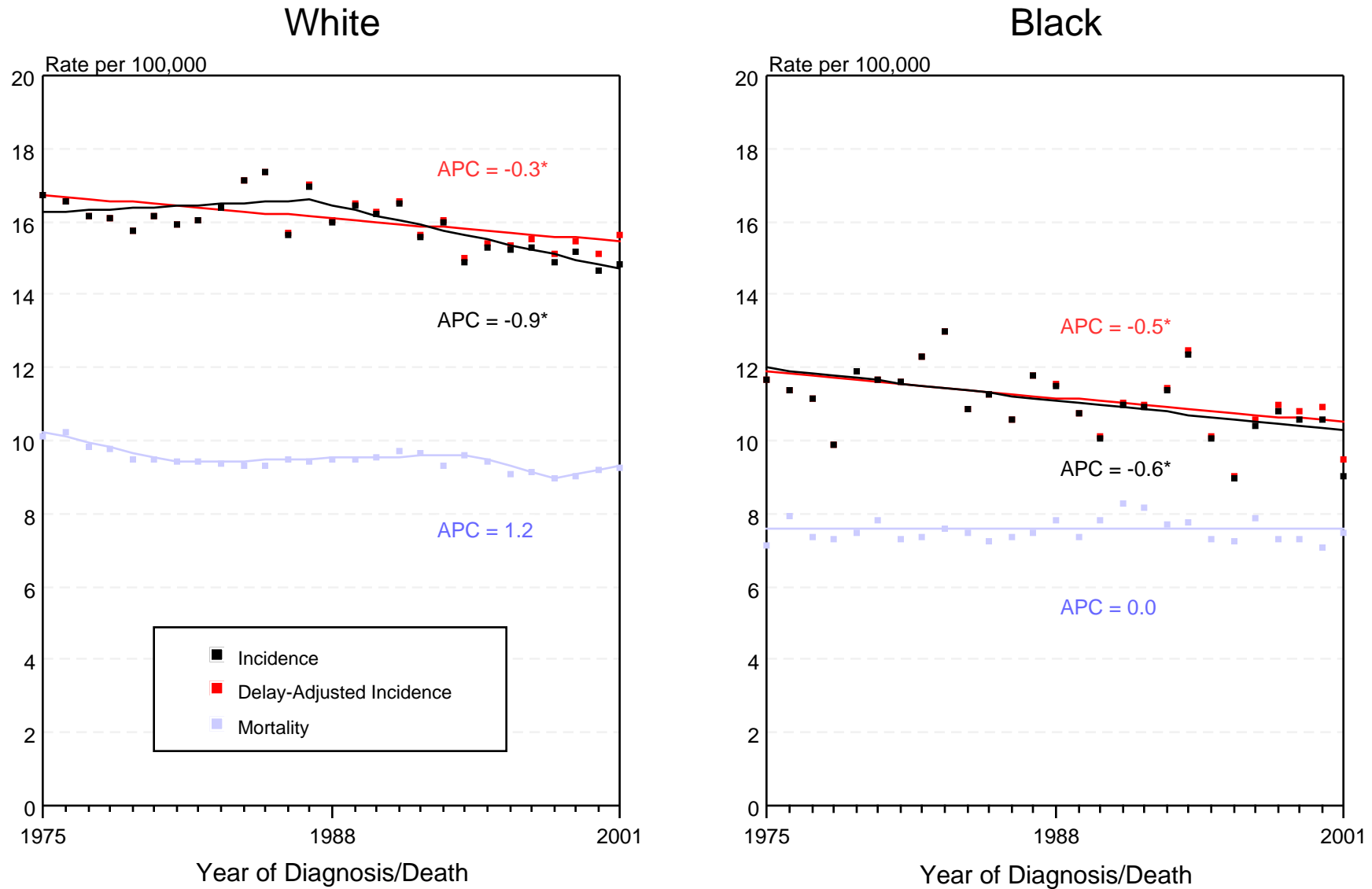


Figure XX-1

+ Source: SEER 9 areas and NCHS public use data file for the total US. Rates are age-adjusted to the 2000 US standard million population by 5-year age groups. Regression lines and APCs are calculated using the Joinpoint Regression Program Version 2.7, September 2003, National Cancer Institute.

The APC is the Annual Percent Change for the regression line segments. The APC shown on the graph is for the most recent trend.

* The APC is significantly different from zero ($p < 0.05$).

SEER Incidence and US Death Rates+ Ovary Cancer, by Age and Race

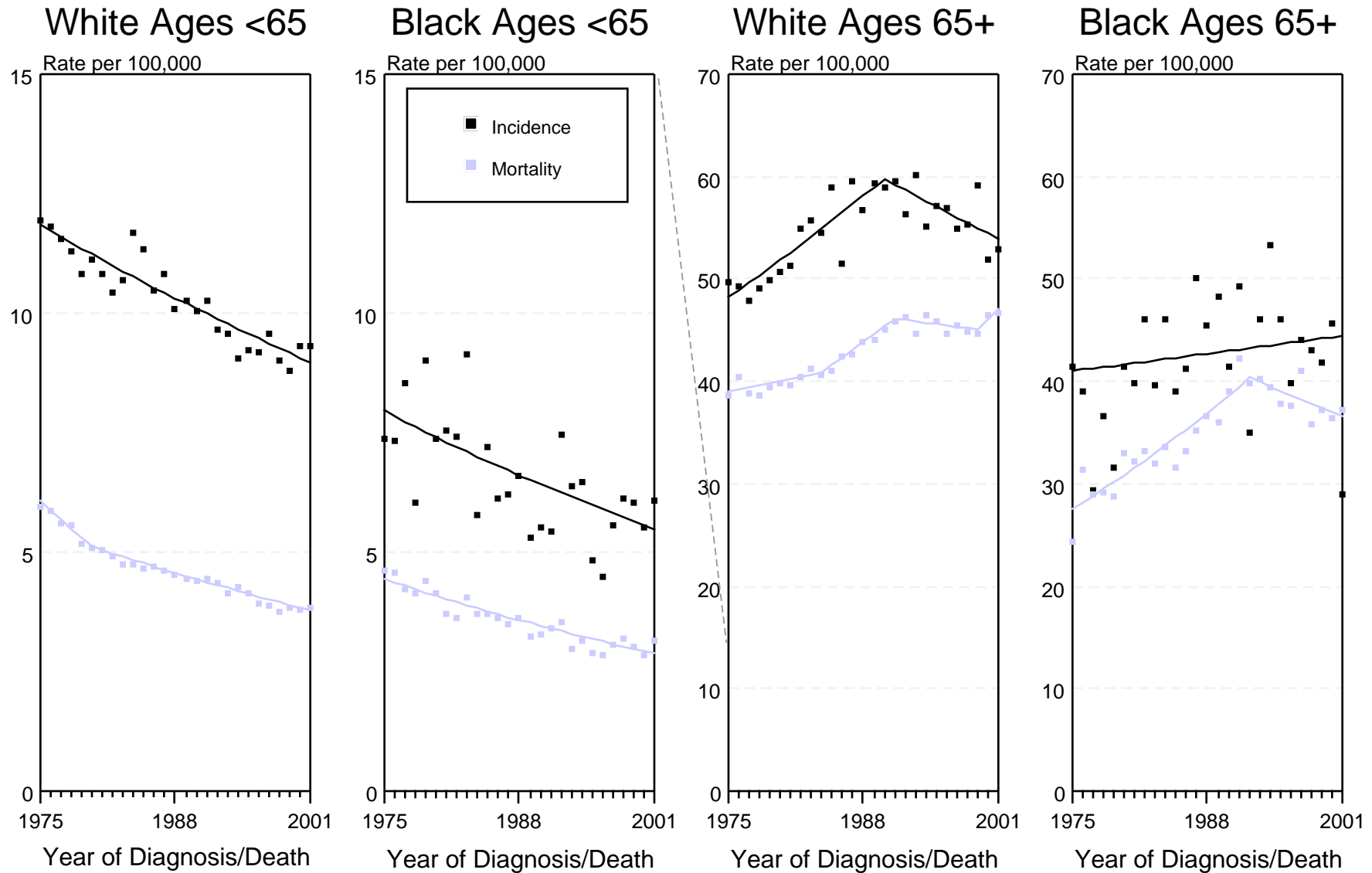


Figure XX-2

+ Source: SEER 9 areas and NCHS public use data file for the total US. Rates are age-adjusted to the 2000 US standard million population by 5-year age groups. Regression lines are calculated using the Joinpoint Regression Program Version 2.7, September 2003, National Cancer Institute.