

Table XIII-1
LEUKEMIA (Invasive)

TRENDS IN SEER INCIDENCE^a AND U.S. MORTALITY^b USING THE JOINPOINT REGRESSION PROGRAM, 1975-2003
WITH UP TO THREE JOINPOINTS BY RACE AND SEX

		<u>Joinpoint Segment 1</u>		<u>Joinpoint Segment 2</u>		<u>Joinpoint Segment 3</u>		<u>Joinpoint Segment 4</u>	
		Year	APC	Year	APC	Year	APC	Year	APC
<u>SEER Cancer Incidence^a</u>									
All Races	Male and Female	1975-2001	0.0	2001-2003	-4.6				
All Races	Male	1975-2001	-0.1	2001-2003	-4.4				
All Races	Female	1975-2001	0.0	2001-2003	-5.0				
White	Male and Female	1975-2001	0.1	2001-2003	-4.7				
White	Male	1975-2003	-0.1						
White	Female	1975-2001	0.2	2001-2003	-5.6				
Black	Male and Female	1975-2003	-0.6*						
Black	Male	1975-2003	-0.7*						
Black	Female	1975-2003	-0.6*						
<u>SEER Delay-Adjusted Incidence^a</u>									
All Races	Male and Female	1975-2003	0.2*						
All Races	Male	1975-2003	0.2*						
All Races	Female	1975-2003	0.2*						
White	Male and Female	1975-2003	0.5*						
White	Male	1975-2003	0.3*						
White	Female	1975-2003	0.5*						
Black	Male and Female	1975-2003	-0.2						
Black	Male	1975-2003	-0.2						
Black	Female	1975-2003	-0.1						
<u>U.S. Cancer Mortality^b</u>									
All Races	Male and Female	1975-1980	0.6	1980-1988	-0.6*	1988-1991	0.8	1991-2003	-0.6*
All Races	Male	1975-1995	-0.2*	1995-2003	-0.7*				
All Races	Female	1975-1980	0.9	1980-2003	-0.5*				
White	Male and Female	1975-1980	0.5	1980-1988	-0.7*	1988-1991	0.7	1991-2003	-0.5*
White	Male	1975-2003	-0.3*						
White	Female	1975-1980	0.7	1980-2003	-0.4*				
Black	Male and Female	1975-1991	0.6*	1991-2003	-1.1*				
Black	Male	1975-1991	1.0*	1991-2003	-1.3*				
Black	Female	1975-1983	1.4*	1983-2003	-0.4*				

Joinpoint Regression Program Version 3.1, April 2006, National Cancer Institute. (<http://srab.cancer.gov/joinpoint/>).

The APC is the Annual Percent Change based on rates age-adjusted to the 2000 US Std Population (19 age groups - Census P25-1130).

^a Trends are from the SEER 9 areas (San Francisco, Connecticut, Detroit, Hawaii, Iowa, New Mexico, Seattle, Utah, and Atlanta).

^b Trends are from the NCHS public use data file for the total US.

* The APC is significantly different from zero (p<.05).

Table XIII-2

LEUKEMIAAGE ADJUSTED SEER INCIDENCE^a RATES BY YEAR, RACE AND SEX

	<u>All Races</u>			<u>Whites</u>			<u>Blacks</u>		
	<u>Total</u>	<u>Males</u>	<u>Females</u>	<u>Total</u>	<u>Males</u>	<u>Females</u>	<u>Total</u>	<u>Males</u>	<u>Females</u>
<u>AGE-ADJUSTED RATES</u>									
<u>YEAR OF DIAGNOSIS:</u>									
1975	12.8	16.9	10.0	13.1	17.5	10.1	11.5	16.2	8.5
1976	13.5	18.5	10.2	13.8	19.1	10.3	11.3	14.2	9.4
1977	12.7	16.3	10.2	13.2	17.0	10.5	10.2	13.6	7.7
1978	12.9	17.2	9.8	13.5	18.3	10.2	9.2	11.4	7.5
1979	12.6	16.8	9.7	13.0	17.6	10.0	10.6	13.6	8.6
1980	12.9	17.4	9.8	13.3	17.9	10.1	12.2	16.0	9.5
1981	12.4	16.5	9.6	12.7	17.1	9.8	12.2	14.5	10.3
1982	13.2	18.2	9.7	13.5	18.8	10.0	10.8	15.2	7.9
1983	13.1	17.8	9.9	13.5	18.4	10.0	12.5	16.0	10.1
1984	13.0	17.1	10.1	13.4	17.9	10.3	10.6	11.8	9.6
1985	13.3	17.7	10.4	13.7	18.2	10.6	12.2	16.8	9.3
1986	12.8	17.4	9.5	13.3	18.3	9.9	10.2	13.1	8.1
1987	13.3	17.7	10.3	13.8	18.4	10.6	12.6	17.6	9.3
1988	12.9	17.4	9.6	13.3	18.2	9.9	11.6	14.1	9.4
1989	13.4	17.6	10.4	13.9	18.2	10.9	11.3	15.9	8.0
1990	12.8	17.1	9.7	13.3	18.0	10.1	11.3	14.8	8.8
1991	13.0	16.7	10.2	13.6	17.6	10.5	10.9	12.0	10.2
1992	12.9	17.4	9.7	13.5	18.5	9.9	10.7	13.9	8.4
1993	12.9	16.9	10.0	13.5	17.8	10.3	11.6	15.1	9.1
1994	12.9	16.8	10.0	13.5	17.6	10.4	9.8	12.6	7.8
1995	13.4	17.5	10.3	14.2	18.6	11.0	9.6	13.2	7.2
1996	12.9	16.7	10.2	13.4	17.3	10.6	10.7	13.9	8.7
1997	12.9	17.2	9.7	13.6	18.2	10.3	10.3	13.8	8.1
1998	12.8	16.7	10.0	13.6	17.6	10.6	9.6	14.1	6.9
1999	12.4	16.6	9.3	13.0	17.3	9.8	9.9	13.2	7.7
2000	12.9	16.8	10.0	13.5	17.6	10.5	11.1	13.2	9.5
2001	13.3	17.2	10.3	14.1	18.2	10.9	10.8	13.0	9.2
2002	12.3	16.2	9.4	13.2	17.4	10.0	7.9	10.2	6.4
2003	11.8	15.4	9.0	12.4	16.3	9.4	9.6	12.4	7.4
1975-2003	12.8	17.0	9.9	13.4	17.8	10.2	10.7	13.8	8.5

^a SEER 9 areas (San Francisco, Connecticut, Detroit, Hawaii, Iowa, New Mexico, Seattle, Utah, and Atlanta). Rates are per 100,000 and are age-adjusted to the 2000 US Std Population (19 age groups - Census P25-1130).

- Statistic not shown. Rate based on less than 16 cases for the time interval.

Table XIII-3
ACUTE LYMPHOCYTIC LEUKEMIA

AGE ADJUSTED SEER INCIDENCE^a RATES BY YEAR, RACE AND SEX

	<u>All Races</u>			<u>Whites</u>			<u>Blacks</u>		
	<u>Total</u>	<u>Males</u>	<u>Females</u>	<u>Total</u>	<u>Males</u>	<u>Females</u>	<u>Total</u>	<u>Males</u>	<u>Females</u>
<u>AGE-ADJUSTED RATES</u>									
<u>YEAR OF DIAGNOSIS:</u>									
1975	0.9	1.1	0.8	1.0	1.2	0.8	-	-	-
1976	1.1	1.3	0.9	1.1	1.3	0.9	0.8	-	-
1977	1.1	1.3	0.9	1.2	1.4	1.0	-	-	-
1978	1.0	1.2	0.8	1.1	1.3	0.9	-	-	-
1979	1.0	1.2	0.9	1.1	1.2	1.0	-	-	-
1980	1.1	1.4	0.9	1.2	1.5	0.9	0.7	-	-
1981	1.2	1.3	1.2	1.3	1.4	1.2	1.0	-	-
1982	1.2	1.5	1.0	1.3	1.6	1.0	-	-	-
1983	1.3	1.5	1.1	1.4	1.7	1.2	0.8	-	-
1984	1.3	1.5	1.2	1.3	1.5	1.2	0.9	-	-
1985	1.3	1.5	1.1	1.4	1.6	1.1	-	-	-
1986	1.3	1.7	1.0	1.4	1.8	1.0	0.8	-	-
1987	1.3	1.5	1.2	1.3	1.6	1.2	0.9	-	1.1
1988	1.4	1.8	1.1	1.4	1.8	1.1	1.0	-	-
1989	1.6	1.8	1.4	1.7	1.9	1.5	1.0	-	-
1990	1.4	1.7	1.2	1.5	1.8	1.3	0.6	-	-
1991	1.4	1.7	1.1	1.5	1.9	1.1	0.9	-	-
1992	1.4	1.6	1.1	1.4	1.7	1.1	0.9	-	-
1993	1.3	1.4	1.1	1.4	1.6	1.1	0.8	-	-
1994	1.2	1.5	0.9	1.3	1.6	1.0	0.7	-	-
1995	1.5	1.8	1.2	1.6	1.9	1.3	1.0	1.3	-
1996	1.4	1.6	1.2	1.4	1.7	1.2	0.8	-	-
1997	1.3	1.5	1.2	1.5	1.6	1.3	0.8	0.9	-
1998	1.5	1.6	1.3	1.6	1.7	1.4	0.9	1.2	-
1999	1.3	1.5	1.1	1.4	1.6	1.2	0.7	-	-
2000	1.4	1.5	1.3	1.5	1.6	1.5	0.9	-	-
2001	1.4	1.6	1.3	1.6	1.8	1.3	0.7	-	-
2002	1.5	1.7	1.2	1.6	2.0	1.3	0.6	-	-
2003	1.4	1.6	1.2	1.4	1.6	1.3	0.8	1.0	-
1975-2003	1.3	1.5	1.1	1.4	1.6	1.2	0.8	0.9	0.7

^a SEER 9 areas (San Francisco, Connecticut, Detroit, Hawaii, Iowa, New Mexico, Seattle, Utah, and Atlanta). Rates are per 100,000 and are age-adjusted to the 2000 US Std Population (19 age groups - Census P25-1130).
 - Statistic not shown. Rate based on less than 16 cases for the time interval.

Table XIII-4
 CHRONIC LYMPHOCYTIC LEUKEMIA

AGE ADJUSTED SEER INCIDENCE^a RATES BY YEAR, RACE AND SEX

	All Races			Whites			Blacks		
	Total	Males	Females	Total	Males	Females	Total	Males	Females
<u>AGE-ADJUSTED RATES</u>									
YEAR OF DIAGNOSIS:									
1975	4.3	5.9	3.3	4.5	6.1	3.4	4.8	6.9	3.2
1976	4.6	6.8	3.1	4.8	7.2	3.2	4.3	6.6	3.0
1977	4.2	5.7	3.1	4.4	6.0	3.3	3.8	5.8	2.5
1978	4.5	5.9	3.4	4.7	6.4	3.6	3.3	3.6	3.1
1979	4.0	5.7	2.9	4.3	6.1	3.1	3.1	4.2	-
1980	4.5	6.3	3.3	4.7	6.5	3.4	4.5	7.1	2.9
1981	4.3	6.3	2.9	4.5	6.6	3.0	3.8	5.4	2.4
1982	4.3	6.2	3.0	4.5	6.4	3.2	3.8	6.7	-
1983	4.4	6.4	3.1	4.7	6.8	3.2	4.2	6.1	3.0
1984	4.4	6.3	3.1	4.7	6.8	3.3	3.5	4.5	2.7
1985	4.4	6.1	3.3	4.7	6.5	3.5	4.1	6.1	2.9
1986	4.5	6.3	3.2	4.8	6.8	3.5	2.8	4.2	-
1987	4.6	6.7	3.0	4.9	7.2	3.3	4.0	6.1	2.5
1988	4.5	6.4	3.1	4.7	6.8	3.2	4.4	5.3	3.5
1989	4.6	6.3	3.4	4.9	6.8	3.6	3.9	5.3	2.9
1990	4.5	6.1	3.3	4.8	6.6	3.5	4.5	6.1	3.4
1991	4.5	6.1	3.4	4.9	6.6	3.6	3.4	3.6	3.2
1992	4.5	6.6	3.1	4.9	7.2	3.3	3.2	5.0	2.1
1993	4.3	6.0	3.1	4.6	6.3	3.3	4.4	6.6	2.9
1994	4.4	5.9	3.3	4.8	6.4	3.5	3.2	4.1	2.3
1995	4.4	6.2	3.0	4.7	6.7	3.3	3.3	5.1	2.1
1996	4.4	6.0	3.3	4.8	6.4	3.7	3.5	5.4	2.2
1997	4.2	5.7	3.1	4.6	6.2	3.3	3.3	4.9	2.4
1998	3.9	5.5	2.7	4.2	6.0	3.0	2.6	3.4	2.1
1999	3.8	5.5	2.5	4.1	5.9	2.7	3.3	5.3	2.2
2000	3.9	5.6	2.7	4.3	6.1	2.9	2.9	3.8	2.3
2001	4.4	6.1	3.1	4.8	6.7	3.3	3.0	3.7	2.6
2002	4.0	5.7	2.7	4.4	6.2	3.0	2.3	3.1	1.7
2003	4.0	5.6	2.8	4.3	6.1	3.0	3.0	4.4	2.0
1975-2003	4.3	6.0	3.1	4.6	6.5	3.3	3.5	4.9	2.5

^a SEER 9 areas (San Francisco, Connecticut, Detroit, Hawaii, Iowa, New Mexico, Seattle, Utah, and Atlanta). Rates are per 100,000 and are age-adjusted to the 2000 US Std Population (19 age groups - Census P25-1130).

- Statistic not shown. Rate based on less than 16 cases for the time interval.

Table XIII-5
ACUTE MYELOID LEUKEMIA

AGE ADJUSTED SEER INCIDENCE^a RATES BY YEAR, RACE AND SEX

	All Races			Whites			Blacks		
	Total	Males	Females	Total	Males	Females	Total	Males	Females
<u>AGE-ADJUSTED RATES</u>									
YEAR OF DIAGNOSIS:									
1975	3.4	4.2	3.0	3.5	4.3	3.0	2.5	3.4	2.0
1976	3.5	4.4	2.9	3.5	4.5	2.9	2.6	-	2.6
1977	3.5	4.2	3.1	3.6	4.4	3.1	1.9	-	-
1978	3.4	4.4	2.7	3.5	4.6	2.8	2.7	3.5	2.1
1979	3.3	4.1	2.8	3.4	4.2	2.9	3.4	3.5	3.4
1980	3.1	4.1	2.4	3.2	4.1	2.5	2.9	3.3	2.5
1981	3.2	4.0	2.6	3.2	4.1	2.7	3.1	3.2	2.9
1982	3.4	4.8	2.6	3.5	4.9	2.6	2.5	3.2	2.1
1983	3.2	4.2	2.5	3.2	4.3	2.4	2.9	3.0	2.9
1984	3.3	4.1	2.7	3.4	4.2	2.8	2.4	2.1	2.4
1985	3.3	4.1	2.9	3.3	4.0	2.8	3.7	4.9	3.0
1986	3.0	3.9	2.4	2.9	3.9	2.4	3.2	4.0	2.7
1987	3.0	4.0	2.5	3.0	4.0	2.5	3.0	4.7	2.0
1988	3.0	3.8	2.5	3.1	3.9	2.5	2.8	3.1	2.5
1989	3.2	4.0	2.6	3.3	4.0	2.8	2.2	3.8	-
1990	3.0	3.9	2.4	3.1	4.0	2.5	2.5	3.0	2.1
1991	3.3	3.9	2.9	3.4	3.9	3.0	3.3	4.4	2.6
1992	3.2	3.9	2.8	3.3	4.0	2.7	3.0	3.0	3.0
1993	3.4	4.3	2.9	3.5	4.4	2.9	2.5	2.6	2.5
1994	3.5	4.1	3.0	3.5	4.2	3.0	2.9	3.2	2.7
1995	3.7	4.2	3.3	3.8	4.3	3.5	2.5	2.6	2.6
1996	3.5	4.3	2.9	3.4	4.3	2.9	3.2	4.0	2.7
1997	3.5	4.6	2.8	3.6	4.8	2.9	3.0	3.7	2.6
1998	3.9	4.9	3.2	4.0	5.1	3.3	3.1	4.6	2.1
1999	3.7	4.5	3.2	3.8	4.6	3.3	3.0	3.4	2.8
2000	4.0	4.9	3.4	4.0	5.0	3.4	4.4	4.8	4.0
2001	4.0	4.9	3.4	4.2	5.0	3.6	3.5	4.1	3.1
2002	3.6	4.5	3.0	3.7	4.7	3.1	2.9	3.2	2.7
2003	3.4	4.4	2.8	3.5	4.5	2.9	3.0	3.4	2.6
1975-2003	3.4	4.3	2.8	3.5	4.4	2.9	3.0	3.5	2.6

^a SEER 9 areas (San Francisco, Connecticut, Detroit, Hawaii, Iowa, New Mexico, Seattle, Utah, and Atlanta). Rates are per 100,000 and are age-adjusted to the 2000 US Std Population (19 age groups - Census P25-1130).
- Statistic not shown. Rate based on less than 16 cases for the time interval.

Table XIII-6
CHRONIC MYELOID LEUKEMIA

AGE ADJUSTED SEER INCIDENCE^a RATES BY YEAR, RACE AND SEX

	<u>All Races</u>			<u>Whites</u>			<u>Blacks</u>		
	<u>Total</u>	<u>Males</u>	<u>Females</u>	<u>Total</u>	<u>Males</u>	<u>Females</u>	<u>Total</u>	<u>Males</u>	<u>Females</u>
<u>AGE-ADJUSTED RATES</u>									
<u>YEAR OF DIAGNOSIS:</u>									
1975	2.0	2.9	1.3	2.0	3.0	1.3	1.9	-	-
1976	1.9	2.5	1.6	1.9	2.4	1.5	1.9	2.6	-
1977	1.7	2.1	1.4	1.7	2.1	1.4	1.8	-	-
1978	1.7	2.3	1.3	1.7	2.3	1.4	1.4	-	-
1979	1.9	2.5	1.4	1.9	2.5	1.5	1.9	2.8	-
1980	1.7	2.1	1.5	1.7	2.1	1.5	1.5	-	-
1981	1.6	2.0	1.4	1.6	1.9	1.4	2.4	3.0	1.8
1982	1.7	2.2	1.4	1.7	2.2	1.3	1.7	-	1.8
1983	1.7	2.2	1.3	1.6	2.1	1.3	2.5	3.4	1.8
1984	1.7	2.4	1.2	1.6	2.4	1.1	2.6	2.6	2.6
1985	2.0	2.8	1.4	2.0	2.8	1.5	2.1	2.9	-
1986	1.7	2.2	1.3	1.7	2.3	1.3	1.5	-	-
1987	1.9	2.3	1.6	1.9	2.4	1.6	2.1	2.9	-
1988	1.9	2.5	1.5	1.9	2.6	1.5	2.1	2.9	-
1989	1.7	2.2	1.3	1.7	2.2	1.3	2.2	3.1	-
1990	1.8	2.5	1.2	1.7	2.5	1.2	2.6	3.5	2.0
1991	1.9	2.4	1.5	1.9	2.6	1.4	1.6	-	1.9
1992	1.8	2.2	1.5	1.8	2.2	1.5	1.5	1.7	-
1993	1.9	2.5	1.5	2.0	2.5	1.6	2.3	3.6	-
1994	1.8	2.5	1.4	1.9	2.5	1.5	1.7	2.5	-
1995	1.9	2.5	1.3	1.9	2.7	1.4	1.5	2.0	-
1996	1.8	2.4	1.4	1.8	2.5	1.3	2.0	2.4	1.8
1997	1.8	2.7	1.3	1.9	2.7	1.3	1.7	2.5	-
1998	1.6	1.9	1.4	1.7	1.9	1.5	1.5	2.3	-
1999	1.8	2.4	1.3	1.7	2.4	1.3	1.7	2.2	1.3
2000	1.7	2.3	1.3	1.8	2.3	1.3	1.5	1.7	1.3
2001	1.7	2.2	1.3	1.7	2.2	1.4	1.7	2.6	1.2
2002	1.5	1.9	1.2	1.6	2.0	1.2	0.9	-	-
2003	1.4	1.9	1.0	1.5	2.0	1.1	1.2	-	-
1975-2003	1.8	2.3	1.3	1.8	2.3	1.4	1.8	2.3	1.4

^a SEER 9 areas (San Francisco, Connecticut, Detroit, Hawaii, Iowa, New Mexico, Seattle, Utah, and Atlanta). Rates are per 100,000 and are age-adjusted to the 2000 US Std Population (19 age groups - Census P25-1130).

- Statistic not shown. Rate based on less than 16 cases for the time interval.

Table XIII-7

LEUKEMIAAGE-ADJUSTED U.S. DEATH^a RATES BY YEAR, RACE AND SEX

	<u>All Races</u>			<u>Whites</u>			<u>Blacks</u>		
	<u>Total</u>	<u>Males</u>	<u>Females</u>	<u>Total</u>	<u>Males</u>	<u>Females</u>	<u>Total</u>	<u>Males</u>	<u>Females</u>
<u>AGE-ADJUSTED RATES</u>									
<u>YEAR OF DEATH:</u>									
1975	8.1	11.0	6.2	8.3	11.3	6.3	6.6	8.6	5.1
1976	8.1	10.9	6.2	8.3	11.2	6.3	6.8	8.5	5.5
1977	8.1	10.8	6.3	8.3	11.1	6.3	6.8	8.8	5.5
1978	8.0	10.8	6.1	8.2	11.1	6.3	6.7	9.2	4.9
1979	8.3	11.1	6.4	8.4	11.4	6.5	7.0	8.9	5.7
1980	8.4	11.2	6.5	8.5	11.5	6.6	7.0	9.1	5.7
1981	8.1	10.9	6.2	8.2	11.2	6.3	7.1	8.9	5.9
1982	8.2	11.0	6.3	8.3	11.3	6.4	7.1	9.4	5.7
1983	8.1	10.9	6.3	8.2	11.2	6.3	7.2	9.2	5.9
1984	8.1	10.7	6.4	8.2	10.9	6.5	7.1	9.2	5.7
1985	8.1	10.8	6.3	8.2	11.0	6.4	7.1	9.6	5.4
1986	8.0	10.7	6.2	8.1	11.0	6.2	7.3	9.3	5.9
1987	7.8	10.3	6.1	7.9	10.5	6.2	7.2	9.4	5.9
1988	7.8	10.6	6.0	8.0	10.8	6.1	7.2	9.8	5.6
1989	8.0	10.6	6.2	8.1	10.8	6.3	7.4	10.3	5.5
1990	8.0	10.7	6.2	8.1	10.9	6.3	7.4	10.0	5.8
1991	8.0	10.5	6.3	8.1	10.6	6.4	7.4	10.0	5.8
1992	8.0	10.7	6.1	8.1	10.9	6.2	7.2	9.4	5.7
1993	7.9	10.7	6.1	8.0	10.8	6.2	7.4	9.8	5.8
1994	7.9	10.6	6.0	8.0	10.8	6.1	7.1	9.6	5.5
1995	7.9	10.8	6.0	8.0	11.0	6.0	7.2	9.8	5.5
1996	7.8	10.5	6.1	8.0	10.7	6.1	7.5	10.1	5.9
1997	7.7	10.4	5.9	7.9	10.7	6.0	6.8	9.2	5.3
1998	7.6	10.1	5.8	7.7	10.3	5.9	7.0	9.4	5.6
1999	7.7	10.2	6.0	7.9	10.5	6.1	6.7	8.8	5.4
2000	7.7	10.3	5.9	7.9	10.5	6.0	6.7	9.1	5.3
2001	7.6	10.1	5.9	7.8	10.4	6.0	6.7	8.8	5.4
2002	7.5	10.1	5.7	7.7	10.4	5.8	6.7	8.8	5.4
2003	7.4	9.9	5.6	7.6	10.3	5.7	6.5	8.4	5.3
1975-2003	7.9	10.6	6.1	8.1	10.8	6.2	7.0	9.3	5.6

^a NCHS public use data file for the total US. Rates are per 100,000 and are age-adjusted to the 2000 US Std Population (19 age groups - Census P25-1130).

- Statistic not shown. Rate based on less than 16 cases for the time interval.

Table XIII-8
LEUKEMIASEER INCIDENCE^a AND U.S. DEATH^b RATES, AGE-ADJUSTED AND AGE-SPECIFIC RATES, BY RACE AND SEX

	All Races			Whites			Blacks		
	Total	Males	Females	Total	Males	Females	Total	Males	Females
<u>SEER INCIDENCE</u>									
<u>AGE AT DIAGNOSIS</u>									
AGE-ADJUSTED RATES, 2000-2003									
All ages	12.2	15.9	9.4	12.7	16.5	9.8	10.1	12.9	8.0
Under 65	6.0	7.2	4.9	6.2	7.4	5.1	5.1	6.3	4.0
65 and over	54.8	75.8	40.7	57.3	79.6	42.3	44.6	58.2	36.1
All ages(IARC world std) ^c	8.8	11.0	7.0	9.2	11.5	7.3	7.1	9.0	5.6
AGE-SPECIFIC RATES, 2000-2003									
<1	4.5	4.1	5.0	4.7	4.4	5.1	3.3	-	-
1-4	8.6	9.5	7.7	9.5	10.5	8.5	3.5	4.1	2.9
5-9	3.8	3.9	3.8	4.1	4.2	4.0	2.2	2.0	2.3
10-14	2.8	3.1	2.6	3.0	3.2	2.8	2.0	2.4	1.7
15-19	3.0	3.6	2.2	3.2	4.1	2.3	1.9	2.1	1.8
20-24	2.3	2.7	1.8	2.4	2.9	2.0	1.6	1.9	1.4
25-29	2.4	2.8	2.0	2.5	2.8	2.1	2.2	2.8	1.6
30-34	3.1	3.6	2.6	3.0	3.5	2.6	3.1	3.5	2.7
35-39	3.7	4.2	3.1	3.7	4.1	3.3	3.5	4.3	2.8
40-44	4.7	5.4	3.9	4.6	5.4	3.8	4.7	5.9	3.6
45-49	7.0	8.3	5.7	7.1	8.3	5.9	7.0	8.9	5.3
50-54	9.9	12.3	7.7	10.1	12.4	7.9	9.0	12.4	6.2
55-59	16.0	20.2	12.1	16.5	21.0	12.2	14.3	18.5	10.7
60-64	23.7	30.3	17.6	24.4	31.1	18.2	21.4	28.7	15.5
65-69	35.0	45.8	25.7	36.5	47.5	27.0	30.4	39.5	23.4
70-74	46.4	63.9	32.5	48.7	67.2	33.7	39.9	53.6	30.3
75-79	63.0	86.7	46.4	65.6	90.5	48.2	50.6	65.3	41.4
80-84	73.4	103.7	54.6	77.0	109.0	57.2	54.5	75.0	43.4
85+	80.3	115.8	64.4	83.7	123.4	66.2	63.7	77.1	58.5
<u>U.S. MORTALITY</u>									
<u>AGE AT DEATH</u>									
AGE-ADJUSTED RATES, 2000-2003									
All ages	7.5	10.1	5.8	7.8	10.4	5.9	6.7	8.7	5.3
Under 65	2.4	2.9	2.0	2.5	2.9	2.0	2.6	3.2	2.1
65 and over	42.9	60.0	31.8	44.4	62.1	32.8	34.5	47.2	27.3
All ages(IARC world std) ^c	4.5	5.8	3.5	4.6	6.0	3.5	4.2	5.4	3.3
AGE-SPECIFIC RATES, 2000-2003									
<1	0.7	0.6	0.8	0.8	0.7	0.9	-	-	-
1-4	0.9	0.9	0.8	0.9	1.0	0.9	0.6	0.6	0.6
5-9	0.7	0.8	0.7	0.8	0.8	0.7	0.6	0.6	0.5
10-14	0.8	1.0	0.7	0.8	0.9	0.7	0.7	0.9	0.6
15-19	1.1	1.3	0.9	1.1	1.4	0.9	1.0	1.3	0.7
20-24	1.2	1.4	0.9	1.2	1.4	1.0	1.1	1.3	0.9
25-29	1.1	1.3	0.9	1.1	1.3	0.9	1.2	1.4	1.0
30-34	1.3	1.5	1.0	1.2	1.5	1.0	1.5	1.9	1.1
35-39	1.6	1.7	1.4	1.5	1.6	1.5	1.8	2.1	1.5
40-44	2.0	2.2	1.7	2.0	2.2	1.7	2.2	2.5	2.0
45-49	2.9	3.4	2.5	2.9	3.4	2.5	3.5	3.9	3.1
50-54	4.4	5.1	3.8	4.4	5.1	3.7	5.3	6.3	4.4
55-59	7.5	9.3	5.8	7.5	9.4	5.8	8.1	10.5	6.2
60-64	12.9	16.4	9.7	13.1	16.7	9.8	13.4	17.1	10.5
65-69	20.8	28.0	14.6	21.5	28.8	15.0	19.1	26.1	13.9
70-74	33.0	45.6	23.0	34.1	47.0	23.7	28.9	40.7	21.0
75-79	47.0	65.6	34.0	48.6	67.9	34.9	38.0	50.8	30.4
80-84	63.2	89.7	47.2	65.5	93.1	48.7	45.5	62.1	37.0
85+	81.5	116.0	66.8	84.3	120.9	68.8	61.6	83.9	53.1

^a SEER 17 areas. Rates are per 100,000 and are age-adjusted to the 2000 US Std Population (19 age groups - Census P25-1130), unless noted.

^b NCHS public use data file for the total US. Rates are per 100,000 and are age-adjusted to the 2000 US Std Population (19 age groups - Census P25-1130), unless noted.

^c Rates are per 100,000 and are age-adjusted to the IARC world standard population.

- Statistic not shown. Rate based on less than 16 cases for the time interval.

Table XIII-9
LYMPHOCYTIC LEUKEMIA

SEER INCIDENCE^a RATES, AGE-ADJUSTED AND AGE-SPECIFIC RATES, BY RACE AND SEX

	All Races			Whites			Blacks		
	Total	Males	Females	Total	Males	Females	Total	Males	Females
<u>ACUTE LYMPHOCYTIC LEUKEMIA</u>									
<u>AGE AT DIAGNOSIS</u>									
AGE-ADJUSTED RATES, 2000-2003									
All ages	1.5	1.7	1.4	1.7	1.9	1.5	0.8	0.9	0.8
Under 65	1.6	1.7	1.4	1.7	1.9	1.5	0.8	0.9	0.7
65 and over	1.5	1.6	1.4	1.6	1.8	1.4	0.8	-	-
All ages(IARC world std) ^b	1.9	2.1	1.7	2.1	2.3	1.8	0.9	1.0	0.9
AGE-SPECIFIC RATES, 2000-2003									
<1	1.9	1.4	2.5	2.0	1.5	2.5	-	-	-
1-4	7.4	8.2	6.6	8.3	9.2	7.3	2.7	3.3	2.2
5-9	3.2	3.2	3.2	3.5	3.5	3.5	1.6	1.3	1.8
10-14	1.9	2.1	1.8	2.1	2.2	1.9	1.2	1.2	1.1
15-19	1.7	2.2	1.1	1.9	2.6	1.2	0.6	-	-
20-24	0.8	1.1	0.5	0.9	1.2	0.6	-	-	-
25-29	0.6	0.8	0.5	0.7	0.9	0.5	-	-	-
30-34	0.7	0.9	0.6	0.8	0.9	0.6	-	-	-
35-39	0.6	0.8	0.5	0.7	0.8	0.5	-	-	-
40-44	0.6	0.6	0.6	0.6	0.7	0.6	-	-	-
45-49	0.6	0.7	0.6	0.7	0.8	0.6	-	-	-
50-54	0.8	1.0	0.6	0.8	0.9	0.6	0.9	-	-
55-59	1.0	1.0	1.0	1.0	1.0	1.0	-	-	-
60-64	1.0	1.3	0.7	1.0	1.3	0.7	-	-	-
65-69	1.3	1.3	1.3	1.5	1.5	1.4	-	-	-
70-74	1.5	1.9	1.2	1.6	2.0	1.2	-	-	-
75-79	1.6	1.4	1.7	1.6	1.4	1.8	-	-	-
80-84	1.2	1.3	1.1	1.3	1.5	1.2	-	-	-
85+	2.0	2.8	1.6	2.0	2.9	1.6	-	-	-
<u>CHRONIC LYMPHOCYTIC LEUKEMIA</u>									
<u>AGE AT DIAGNOSIS</u>									
AGE-ADJUSTED RATES, 2000-2003									
All ages	3.8	5.3	2.6	4.0	5.6	2.8	2.9	4.2	2.1
Under 65	1.2	1.7	0.8	1.3	1.8	0.8	1.0	1.4	0.6
65 and over	21.3	30.2	15.3	22.5	32.1	16.1	16.4	23.2	12.4
All ages(IARC world std) ^b	2.3	3.2	1.6	2.4	3.3	1.6	1.8	2.6	1.3
AGE-SPECIFIC RATES, 2000-2003									
<1	-	-	-	-	-	-	-	-	-
1-4	-	-	-	-	-	-	-	-	-
5-9	-	-	-	-	-	-	-	-	-
10-14	-	-	-	-	-	-	-	-	-
15-19	-	-	-	-	-	-	-	-	-
20-24	-	-	-	-	-	-	-	-	-
25-29	-	-	-	-	-	-	-	-	-
30-34	0.1	0.2	-	0.1	0.2	-	-	-	-
35-39	0.2	0.3	0.2	0.2	0.3	0.2	-	-	-
40-44	0.6	0.9	0.4	0.7	0.9	0.4	-	-	-
45-49	1.6	2.1	1.2	1.8	2.3	1.2	1.2	1.6	-
50-54	3.0	4.3	1.9	3.2	4.4	1.9	2.6	4.0	-
55-59	6.3	8.8	4.0	6.7	9.3	4.2	4.8	6.8	3.2
60-64	9.6	13.1	6.4	10.1	13.6	6.8	7.7	11.8	4.4
65-69	14.3	19.0	10.3	15.0	19.8	10.7	13.2	17.3	10.0
70-74	17.9	25.3	12.0	19.0	26.9	12.6	14.3	19.8	10.6
75-79	24.5	34.6	17.4	26.0	37.0	18.3	17.7	25.3	13.1
80-84	27.8	39.7	20.4	29.4	42.3	21.3	21.1	30.0	16.2
85+	30.8	45.9	24.0	32.6	49.5	25.2	20.4	31.6	16.0

^a SEER 17 areas. Rates are per 100,000 and are age-adjusted to the 2000 US Std Population (19 age groups - Census P25-1130), unless noted.

^b Rates are per 100,000 and are age-adjusted to the IARC world standard population.

- Statistic not shown. Rate based on less than 16 cases for the time interval.

Table XIII-10
MYELOID LEUKEMIA

SEER INCIDENCE^a RATES, AGE-ADJUSTED AND AGE-SPECIFIC RATES, BY RACE AND SEX

	All Races			Whites			Blacks		
	Total	Males	Females	Total	Males	Females	Total	Males	Females
<u>ACUTE MYELOID LEUKEMIA</u>									
<u>AGE AT DIAGNOSIS</u>									
AGE-ADJUSTED RATES, 2000-2003									
All ages	3.7	4.6	3.0	3.8	4.7	3.1	3.2	4.0	2.7
Under 65	1.8	1.9	1.6	1.8	1.9	1.7	1.7	2.1	1.4
65 and over	17.0	23.2	12.8	17.6	24.1	13.2	13.6	17.2	11.2
All ages(IARC world std) ^b	2.5	3.0	2.2	2.6	3.1	2.2	2.3	2.8	1.9
AGE-SPECIFIC RATES, 2000-2003									
<1	1.4	1.4	1.3	1.5	1.5	1.5	-	-	-
1-4	0.8	0.8	0.8	0.8	0.8	0.8	-	-	-
5-9	0.4	0.4	0.4	0.4	0.4	0.4	-	-	-
10-14	0.7	0.7	0.6	0.7	0.7	0.6	0.7	-	-
15-19	0.9	0.9	0.8	0.9	1.1	0.8	0.8	-	-
20-24	0.9	1.0	0.9	1.0	1.1	0.9	0.8	-	-
25-29	1.0	1.0	0.9	1.0	1.0	0.9	0.8	-	-
30-34	1.2	1.2	1.2	1.2	1.2	1.2	1.2	1.3	-
35-39	1.4	1.4	1.4	1.4	1.3	1.5	1.6	1.8	1.3
40-44	1.7	1.9	1.5	1.7	1.9	1.5	1.6	2.2	-
45-49	2.4	2.6	2.1	2.3	2.5	2.2	2.9	3.7	2.2
50-54	3.2	3.4	3.0	3.2	3.3	3.1	2.8	3.8	2.0
55-59	4.8	5.3	4.4	4.9	5.4	4.4	4.8	5.5	4.3
60-64	7.3	8.4	6.2	7.5	8.5	6.5	7.0	8.8	5.6
65-69	11.0	14.2	8.4	11.6	14.7	8.9	9.2	11.7	7.4
70-74	15.3	20.5	11.1	16.0	21.5	11.5	12.6	18.2	8.7
75-79	19.8	26.6	15.1	20.2	27.1	15.4	15.7	18.4	14.0
80-84	23.1	32.7	17.1	23.9	33.8	17.8	16.4	23.8	12.4
85+	21.4	31.6	16.9	22.3	34.1	17.1	18.3	-	18.5
<u>CHRONIC MYELOID LEUKEMIA</u>									
<u>AGE AT DIAGNOSIS</u>									
AGE-ADJUSTED RATES, 2000-2003									
All ages	1.5	2.0	1.2	1.5	2.0	1.2	1.5	1.9	1.1
Under 65	0.8	0.9	0.6	0.7	0.9	0.6	0.8	1.1	0.5
65 and over	6.7	9.3	4.9	6.9	9.6	5.1	6.2	7.7	5.0
All ages(IARC world std) ^b	1.0	1.3	0.8	1.0	1.3	0.8	1.0	1.3	0.7
AGE-SPECIFIC RATES, 2000-2003									
<1	-	-	-	-	-	-	-	-	-
1-4	0.1	-	-	0.1	-	-	-	-	-
5-9	-	-	-	-	-	-	-	-	-
10-14	0.1	-	-	0.1	-	-	-	-	-
15-19	0.2	0.2	-	0.2	0.2	-	-	-	-
20-24	0.3	0.4	0.2	0.3	0.4	0.2	-	-	-
25-29	0.5	0.6	0.4	0.5	0.6	0.4	-	-	-
30-34	0.6	0.8	0.5	0.6	0.8	0.4	0.6	-	-
35-39	0.8	1.0	0.7	0.9	1.1	0.7	0.8	-	-
40-44	0.9	1.1	0.8	0.8	1.0	0.7	1.4	2.0	-
45-49	1.2	1.3	1.1	1.2	1.2	1.1	1.3	1.7	-
50-54	1.5	1.8	1.1	1.5	1.8	1.2	1.3	1.8	-
55-59	1.8	2.2	1.4	1.8	2.3	1.4	2.0	-	-
60-64	3.0	3.6	2.3	2.9	3.6	2.3	2.9	3.9	-
65-69	4.1	5.6	2.8	4.1	5.5	2.8	4.1	5.7	-
70-74	5.5	7.5	3.8	5.5	7.5	3.9	6.1	8.4	4.5
75-79	8.0	11.3	5.7	8.4	11.8	6.0	6.6	8.9	5.2
80-84	9.4	13.4	7.0	10.1	14.2	7.5	7.1	-	-
85+	9.7	13.1	8.1	9.8	13.7	8.1	9.0	-	10.0

^a SEER 17 areas. Rates are per 100,000 and are age-adjusted to the 2000 US Std Population (19 age groups - Census P25-1130), unless noted.

^b NCHS public use data file for the total US. Rates are per 100,000 and are age-adjusted to the 2000 US Std Population (19 age groups - Census P25-1130), unless noted.

^c Rates are per 100,000 and are age-adjusted to the IARC world standard population.

- Statistic not shown. Rate based on less than 16 cases for the time interval.

Table XIII-11
LEUKEMIA

SURVIVAL RATES, BY RACE, SEX, DIAGNOSIS YEAR AND AGE

	All Races			Whites			Blacks		
	Total	Males	Females	Total	Males	Females	Total	Males	Females
<u>5-YR RELATIVE SURVIVAL RATES</u>									
YEAR OF DIAGNOSIS:									
1960-1963 ^a	-	-	-	14	-	-	-	-	-
1970-1973 ^a	-	-	-	22	-	-	-	-	-
1975-1977 ^b	35.2	34.1	36.5	35.8	34.8	37.1	33.4	30.4	36.4
1978-1980 ^b	37.6	36.7	38.8	38.3	37.6	39.3	29.6	28.3	31.2
1981-1983 ^b	39.1	38.9	39.4	40.1	40.0	40.4	34.2	33.7	34.9
1984-1986 ^b	41.7	41.1	42.3	43.0	42.6	43.5	33.6	32.3	35.0
1987-1989 ^b	44.1	45.7	42.1	45.3	47.4	42.6	37.0	35.0	39.4
1990-1992 ^b	46.3	46.0	46.6	47.8	48.0	47.5	37.2	31.3	43.5
1993-1995 ^b	48.4	49.3	47.2	49.6	50.5	48.4	42.2	42.0	42.4
1996-2002 ^b	48.7 ^e	49.1 ^e	48.2 ^e	50.3 ^e	50.5 ^e	50.0 ^e	38.7	39.4	37.6
<u>5-YR PERIOD SURVIVAL RATES^{cd}</u>									
YEAR OF DIAGNOSIS:									
1996-2002	48.9	49.2	48.5	50.0	50.3	49.5	40.1	40.8	39.3
<u>5-YR RELATIVE SURVIVAL RATES, 1996-2002^c</u>									
AGE AT DIAGNOSIS:									
<45	65.0	64.1	66.3	66.9	65.9	68.2	52.2	50.8	54.0
45-54	53.9	55.3	51.7	55.6	56.4	54.4	46.1	50.3	42.1 ^f
55-64	51.3	51.0	51.6	53.8	53.6	54.3	33.1	29.1	36.9
65-74	39.6	38.3	41.6	41.4	39.8	43.8	30.4	31.2	29.5
75+	27.8	27.7	27.9	29.1	29.0	29.0	24.0	19.6 ^f	24.9
Under 65	58.9	58.5	59.5	60.7	60.1	61.7	46.3	45.9	46.9
65 and over	33.7	33.7	33.8	35.2	35.0	35.3	27.5	28.0	26.9

- ^a Rates are based on End Results data from a series of hospital registries and one population-based registry.
- ^b Rates are from the SEER 9 areas (San Francisco, Connecticut, Detroit, Hawaii, Iowa, New Mexico, Seattle, Utah, Atlanta).
- ^c Rates are based on follow-up of patients into 2003.
- ^d Rates are from the SEER 17 areas (San Francisco, Connecticut, Detroit, Hawaii, Iowa, New Mexico, Seattle, Utah, Atlanta, San Jose-Monterey, Los Angeles, Alaska Native Registry, Rural Georgia, California excluding SF/SJM/LA, Kentucky, Louisiana and New Jersey). California excluding SF/SJM/LA, Kentucky, Louisiana, and New Jersey contribute cases for diagnosis years 2000-2002. The remaining 13 SEER Areas contribute cases for the entire period 1996-2002. Rates are based on follow-up of patients into 2003.
- ^e Period survival provides a more up-to-date estimate of survival by piecing together the most recent conditional survival estimates from several cohorts. It is computed here using three calendar year blocks (2000-2002: 0-1 year survival), (1999-2001: 1-2 year survival), (1998-2000: 2-3 year survival), (1997-1999: 3-4 year survival), (1996-1998: 4-5 years survival).
- ^f The difference in rates between 1975-1977 and 1996-2002 is statistically significant ($p < .05$).
- ^g The standard error of the survival rate is between 5 and 10 percentage points.
- The standard error of the survival rate is greater than 10 percentage points.
- Statistic could not be calculated due to fewer than 16 cases during the time period.

Table XIII-12
LYMPHOCYTIC LEUKEMIA

SURVIVAL RATES, BY RACE, SEX, DIAGNOSIS YEAR AND AGE

	All Races			Whites			Blacks		
	Total	Males	Females	Total	Males	Females	Total	Males	Females
ACUTE LYMPHOCYTIC LEUKEMIA									
<u>5-YR RELATIVE SURVIVAL RATES</u>									
YEAR OF DIAGNOSIS:									
1975-1977 ^a	42.2	38.2	47.4	42.7	39.0	47.9	34.5 ^e	-	38.9 ^f
1978-1980 ^a	50.5	47.1	55.4	50.7	47.4	55.4	31.7 ^e	31.4 ^e	-
1981-1983 ^a	51.9	48.6	56.1	52.8	49.6	57.1	43.5 ^e	37.6 ^e	49.1 ^e
1984-1986 ^a	53.5	50.3	57.7	54.4	50.4	60.1	36.0 ^e	43.6 ^e	27.4 ^e
1987-1989 ^a	56.0	55.6	56.3	56.7	56.9	56.2	46.0 ^e	43.1 ^e	48.0 ^e
1990-1992 ^a	59.5	56.1	64.4	59.6	57.1	63.3	57.8 ^e	51.1 ^e	63.8 ^e
1993-1995 ^a	61.5	58.6	65.4	61.1	58.8	64.2	54.1 ^e	45.9 ^e	65.0 ^e
1996-2002 ^a	65.2 ^d	64.0 ^d	66.8 ^d	66.4 ^d	64.7 ^d	68.4 ^d	56.8 ^d	56.6 ^e	56.7 ^e
<u>5-YR PERIOD SURVIVAL RATES^{bc}</u>									
YEAR OF DIAGNOSIS:									
1996-2002	64.3	63.0	66.0	65.2	64.2	66.4	53.5	49.3	58.3
<u>5-YR RELATIVE SURVIVAL RATES, 1996-2002^b</u>									
AGE AT DIAGNOSIS:									
<45	73.2	70.8	76.5	74.4	71.8	77.8	61.0	58.2	64.3 ^e
45-54	25.0	25.3	23.7	25.0	26.3	21.3 ^e	11.6 ^e	-	-
55-64	16.3	14.6	19.2	14.1	13.2	16.5 ^e	-	-	-
65-74	8.1	7.3	8.4	9.7	8.6	10.0	-	-	-
75+	6.3	3.2	7.5	5.1	-	7.0	-	-	-
Under 65	67.6	65.6	70.3	68.5	66.3	71.3	56.4	54.3	59.0 ^e
65 and over	7.4	6.3	8.0	7.7	6.2	8.5	9.8 ^e	-	-
CHRONIC LYMPHOCYTIC LEUKEMIA									
<u>5-YR RELATIVE SURVIVAL RATES</u>									
YEAR OF DIAGNOSIS:									
1975-1977 ^a	68.7	66.5	71.6	69.5	67.1	72.6	57.1 ^e	56.3 ^e	57.9 ^e
1978-1980 ^a	70.5	67.7	74.1	71.2	68.4	75.0	59.6 ^e	58.6 ^e	60.6 ^e
1981-1983 ^a	68.3	67.8	69.0	69.1	68.8	69.4	57.6 ^e	54.3 ^e	62.9 ^e
1984-1986 ^a	73.6	72.2	75.4	74.0	72.7	75.7	70.1 ^e	67.3 ^e	70.5 ^e
1987-1989 ^a	74.0	74.1	74.0	75.2	75.4	75.0	60.3	59.0 ^e	62.2 ^e
1990-1992 ^a	75.1	73.8	76.8	76.4	75.2	78.0	54.0 ^e	45.5 ^e	62.6 ^e
1993-1995 ^a	77.8	77.9	77.7	78.9	78.9	78.9	64.7	63.5 ^e	66.1 ^e
1996-2002 ^a	74.2 ^d	73.1 ^d	75.6	75.5 ^d	74.6 ^d	76.8	56.0	48.9 ^e	63.4 ^e
<u>5-YR PERIOD SURVIVAL RATES^{bc}</u>									
YEAR OF DIAGNOSIS:									
1996-2002	74.8	74.1	75.8	76.0	75.5	76.6	61.1	56.2	67.1
<u>5-YR RELATIVE SURVIVAL RATES, 1996-2002^b</u>									
AGE AT DIAGNOSIS:									
<45	88.3	89.2	85.7 ^e	90.3	90.3	90.3	62.2 ^f	72.8 ^f	-
45-54	82.0	80.1	85.7	83.3	81.1	87.5	71.4 ^e	65.9 ^e	80.9 ^e
55-64	83.1	79.2	90.4	84.9	82.2	90.3	60.6 ^e	42.3 ^e	85.6 ^e
65-74	74.9	71.1	80.8	76.4	72.5	82.3	55.8 ^e	56.3 ^e	55.7 ^f
75+	59.4	59.0	59.6	60.5	60.5	60.4	50.8 ^e	50.8 ^e	56.1 ^e
Under 65	83.2	80.5	88.5	84.9	82.8	89.4	65.4	53.9 ^e	81.5 ^e
65 and over	67.4	66.2	68.9	68.7	67.5	69.9	53.6	51.5 ^e	55.5 ^e

^a Rates are from the SEER 9 areas (San Francisco, Connecticut, Detroit, Hawaii, Iowa, New Mexico, Seattle, Utah, Atlanta). Rates are based on follow-up of patients into 2003.

^b Rates are from the SEER 17 areas (San Francisco, Connecticut, Detroit, Hawaii, Iowa, New Mexico, Seattle, Utah, Atlanta, San Jose-Monterey, Los Angeles, Alaska Native Registry, Rural Georgia, California excluding SF/SJM/LA, Kentucky, Louisiana and New Jersey). California excluding SF/SJM/LA, Kentucky, Louisiana, and New Jersey contribute cases for diagnosis years 2000-2002. The remaining 13 SEER Areas contribute cases for the entire period 1996-2002. Rates are based on follow-up of patients into 2003.

^c Period survival provides a more up-to-date estimate of survival by piecing together the most recent conditional survival estimates from several cohorts. It is computed here using three calendar year blocks (2000-2002: 0-1 year survival), (1999-2001: 1-2 year survival), (1998-2000: 2-3 year survival), (1997-1999: 3-4 year survival), (1996-1998: 4-5 years survival).

^d The difference in rates between 1975-1977 and 1996-2002 is statistically significant (p<.05).

^e The standard error of the survival rate is between 5 and 10 percentage points.

^f The standard error of the survival rate is greater than 10 percentage points.

- Statistic could not be calculated due to fewer than 16 cases during the time period.

Table XIII-13
MYELOID LEUKEMIA

	All Races			Whites			Blacks		
	Total	Males	Females	Total	Males	Females	Total	Males	Females
ACUTE MYELOID LEUKEMIA									
5-YR RELATIVE SURVIVAL RATES									
YEAR OF DIAGNOSIS:									
1975-1977 ^a	6.4	6.0	6.8	6.1	5.9	6.4	10.4	8.5 ^e	11.8 ^e
1978-1980 ^a	8.3	7.8	8.8	7.7	6.8	8.6	10.2	7.2	13.2
1981-1983 ^a	9.4	8.3	10.7	8.7	7.3	10.4	12.5	16.4 ^e	8.8
1984-1986 ^a	12.0	10.5	13.6	11.7	10.4	13.2	10.2	6.9	13.3
1987-1989 ^a	12.7	10.5	15.1	12.7	11.2	14.3	10.1	4.7	16.9 ^e
1990-1992 ^a	15.3	13.9	16.8	15.0	13.5	16.7	14.6	14.3	14.7
1993-1995 ^a	18.1	16.7	19.5	17.4	15.9	19.0	23.1	23.1 ^e	22.5 ^e
1996-2002 ^a	20.4 ^d	19.2 ^d	21.6 ^d	19.8 ^d	18.3 ^d	21.4 ^d	21.5 ^d	25.0 ^d	17.4
5-YR PERIOD SURVIVAL RATES^{bc}									
YEAR OF DIAGNOSIS:									
1996-2002	21.7	20.3	23.2	21.3	19.9	22.9	21.7	22.4	20.6
5-YR RELATIVE SURVIVAL RATES, 1996-2002^b									
AGE AT DIAGNOSIS:									
<45	48.5	46.9	50.1	49.5	48.8	50.3	41.2	40.2	42.4 ^e
45-54	25.9	24.7	27.3	25.7	22.6	29.5	25.6 ^e	29.2 ^e	21.7 ^e
55-64	16.9	15.0	19.1	17.4	15.2	20.3	7.5	-	5.7
65-74	6.3	5.2	7.7	6.4	5.3	7.9	5.9	6.8	-
75+	2.3	1.8	2.7	2.2	1.7	2.6	2.6	-	4.0
Under 65	34.4	32.5	36.6	34.5	32.3	37.1	30.3	31.6	28.5
65 and over	4.3	3.7	4.9	4.3	3.8	4.8	4.3	4.5	4.1
CHRONIC MYELOID LEUKEMIA									
5-YR RELATIVE SURVIVAL RATES									
YEAR OF DIAGNOSIS:									
1975-1977 ^a	23.7	21.4	26.8	22.7	20.5	25.7	28.7 ^e	22.6 ^e	36.0 ^e
1978-1980 ^a	24.9	24.1	25.8	25.4	25.2	25.5	21.7 ^e	20.9 ^e	22.7 ^e
1981-1983 ^a	30.4	26.3	35.2	31.0	27.2	35.1	29.6	20.6 ^e	40.3 ^e
1984-1986 ^a	23.7	21.2	27.2	24.5	21.7	28.5	22.5	21.9 ^e	22.6 ^e
1987-1989 ^a	32.3	33.0	31.3	32.1	33.5	30.3	36.9 ^e	30.3 ^e	45.0 ^e
1990-1992 ^a	32.3	31.0	34.1	32.1	32.2	32.0	34.9 ^e	22.1 ^e	48.2 ^e
1993-1995 ^a	37.2	37.1	37.3	37.3	37.4	37.2	35.2 ^e	33.2 ^e	38.5 ^e
1996-2002 ^a	42.3 ^d	41.2 ^d	43.6 ^d	42.5 ^d	40.7 ^d	44.5 ^d	38.0	38.7 ^e	37.1 ^e
5-YR PERIOD SURVIVAL RATES^{bc}									
YEAR OF DIAGNOSIS:									
1996-2002	44.7	44.1	45.7	44.3	43.0	46.3	41.6	44.5	37.5
5-YR RELATIVE SURVIVAL RATES, 1996-2002^b									
AGE AT DIAGNOSIS:									
<45	64.7	63.2	67.3	66.6	63.5	71.9	56.8 ^e	56.0 ^e	58.9 ^e
45-54	62.0	58.3	65.7	62.9	58.9	66.8	56.5 ^e	58.6 ^e	55.4 ^f
55-64	50.0	48.5	52.0	52.8	50.1	57.9	26.1 ^e	32.8 ^f	-
65-74	28.2	27.0	29.7	27.6	26.3	29.8	25.5 ^e	22.2 ^e	29.2 ^f
75+	14.9	14.5	15.5	14.9	13.8	16.1	10.9 ^e	7.4 ^e	10.6 ^e
Under 65	60.1	58.1	63.1	61.8	58.6	66.5	50.9	52.2 ^e	49.6 ^e
65 and over	21.4	21.2	21.7	21.0	20.4	21.8	20.9 ^e	19.1 ^e	22.7 ^e

^a Rates are from the SEER 9 areas (San Francisco, Connecticut, Detroit, Hawaii, Iowa, New Mexico, Seattle, Utah, Atlanta). Rates are based on follow-up of patients into 2003.

^b Rates are from the SEER 17 areas (San Francisco, Connecticut, Detroit, Hawaii, Iowa, New Mexico, Seattle, Utah, Atlanta, San Jose-Monterey, Los Angeles, Alaska Native Registry, Rural Georgia, California excluding SF/SJM/LA, Kentucky, Louisiana and New Jersey). California excluding SF/SJM/LA, Kentucky, Louisiana, and New Jersey contribute cases for diagnosis years 2000-2002. The remaining 13 SEER Areas contribute cases for the entire period 1996-2002. Rates are based on follow-up of patients into 2003.

^c Period survival provides a more up-to-date estimate of survival by piecing together the most recent conditional survival estimates from several cohorts. It is computed here using three calendar year blocks (2000-2002: 0-1 year survival), (1999-2001: 1-2 year survival), (1998-2000: 2-3 year survival), (1997-1999: 3-4 year survival), (1996-1998: 4-5 years survival).

^d The difference in rates between 1975-1977 and 1996-2002 is statistically significant ($p < .05$).

^e The standard error of the survival rate is between 5 and 10 percentage points.

^f The standard error of the survival rate is greater than 10 percentage points.

- Statistic could not be calculated due to fewer than 16 cases during the time period.

Table XIII-14

LEUKEMIASURVIVAL RATES^a

By Year of Diagnosis

All Races, Males and Females

Year of Diagnosis

	1975- 1979	1980- 1984	1985	1986	1987	1988	1989	1990	1991	1992	1993	1994	1995	1996	1997	1998	1999	2000	2001	2002
Relative Survival Rates (SEER ^b)																				
1-year	61.4	63.7	64.9	65.2	64.6	66.9	65.2	67.1	66.7	67.7	67.8	66.9	68.3	68.4	67.8	66.0	65.4	65.4	68.4	69.1
2-year	50.8	53.5	55.8	55.5	54.4	57.2	56.4	56.4	57.3	58.7	58.6	58.2	58.9	59.7	59.6	57.3	58.0	57.0	60.4	
3-year	44.5	47.7	49.5	49.6	49.1	51.6	51.4	51.6	51.8	53.8	55.0	53.9	54.4	55.2	55.1	53.5	54.3	53.1		
4-year	39.9	43.1	45.8	45.8	45.6	48.1	47.0	48.3	47.6	50.4	51.6	50.7	51.0	51.9	51.3	49.9	51.3			
5-year	35.9	39.2	42.6	42.6	42.5	45.3	44.4	45.9	45.2	47.7	48.5	48.1	48.5	48.8	48.8	48.1				
6-year	32.8	36.7	40.2	40.5	40.7	43.2	41.7	42.4	43.3	45.4	46.6	45.8	46.5	47.0	47.0					
7-year	30.8	34.4	38.2	38.4	38.0	40.4	39.1	40.1	40.9	42.7	44.1	44.0	45.5	46.1						
8-year	28.7	32.4	36.2	36.2	35.9	38.1	37.4	38.2	38.8	41.0	43.2	41.7	43.1							
9-year	27.0	30.8	33.8	34.7	34.3	36.7	35.8	36.9	37.6	39.5	41.9	40.6								
10-year	25.6	29.5	33.1	33.6	32.8	35.6	34.5	35.6	36.7	38.8	41.1									
11-year	24.4	28.4	31.3	32.3	32.0	33.9	33.1	34.3	35.5	37.5										
12-year	23.4	27.5	30.8	31.6	30.6	33.0	32.6	32.8	35.1											
13-year	22.7	26.7	30.5	31.2	29.8	32.1	32.3	31.7												
14-year	22.1	26.4	29.7	30.7	29.8	31.5	32.3													
15-year	21.7	25.9	29.4	30.0	29.8	31.5														
16-year	21.0	25.3	29.0	29.4	29.7															
17-year	20.7	24.8	28.6	29.4																
18-year	20.4	24.6	28.1																	
19-year	20.1	24.1																		
20-year	19.6																			

^a Survival rates are relative rates expressed as percents.^b Rates are from the SEER 9 areas (San Francisco, Connecticut, Detroit, Hawaii, Iowa, New Mexico, Seattle, Utah, and Atlanta).

Table XIII-15

LEUKEMIASURVIVAL RATES^a

By Year of Diagnosis

All Races, Males

Year of Diagnosis

	1975- 1979	1980- 1984	1985	1986	1987	1988	1989	1990	1991	1992	1993	1994	1995	1996	1997	1998	1999	2000	2001	2002
Relative Survival Rates (SEER ^b)																				
1-year	61.2	64.0	65.6	65.1	66.2	68.1	65.4	67.8	67.8	68.2	69.0	68.9	69.9	69.9	68.8	65.9	66.5	67.1	70.6	70.0
2-year	50.4	53.5	55.8	55.4	56.9	58.2	57.6	56.5	58.4	59.1	60.0	59.5	60.6	61.5	60.9	57.9	59.0	59.0	62.4	
3-year	43.7	47.4	48.7	48.9	51.2	52.5	52.2	51.0	52.6	53.9	56.5	54.5	56.0	57.3	55.5	54.2	55.1	55.5		
4-year	39.0	42.5	44.8	45.4	48.1	48.9	47.9	47.5	47.5	50.8	53.2	52.1	52.3	53.9	51.1	50.2	51.8			
5-year	34.8	38.7	42.4	42.3	44.5	46.7	45.5	44.1	45.3	48.6	49.6	49.3	49.0	50.0	48.7	48.3				
6-year	31.8	36.1	39.8	40.5	42.0	44.4	42.9	40.3	43.8	45.8	47.8	46.4	46.4	48.0	47.3					
7-year	29.5	33.8	37.5	38.0	39.1	41.8	39.8	38.2	41.2	42.8	45.1	44.6	45.5	47.1						
8-year	27.2	31.5	35.4	35.8	37.7	39.4	38.1	35.9	39.2	41.3	44.3	41.9	43.9							
9-year	25.3	29.8	33.2	33.8	36.5	37.7	36.5	34.9	38.1	40.1	43.1	40.2								
10-year	23.9	28.7	32.2	32.5	34.5	36.3	35.1	33.1	37.0	39.7	42.5									
11-year	22.6	27.6	30.5	31.7	33.7	35.2	33.6	32.0	35.7	39.0										
12-year	21.5	27.2	30.0	31.0	32.0	34.4	33.4	30.5	34.9											
13-year	21.1	26.6	29.8	31.0	31.0	33.8	33.2	29.8												
14-year	20.4	26.4	29.7	30.8	31.0	33.0	33.0													
15-year	20.0	25.9	28.7	30.1	31.0	32.9														
16-year	19.4	25.3	28.0	30.1	30.7															
17-year	19.1	24.6	28.0	30.1																
18-year	18.7	24.4	27.1																	
19-year	18.3	24.1																		
20-year	17.5																			

^a Survival rates are relative rates expressed as percents.^b Rates are from the SEER 9 areas (San Francisco, Connecticut, Detroit, Hawaii, Iowa, New Mexico, Seattle, Utah, and Atlanta).

Table XIII-16

LEUKEMIASURVIVAL RATES^a

By Year of Diagnosis

All Races, Females

Year of Diagnosis

	1975- 1979	1980- 1984	1985	1986	1987	1988	1989	1990	1991	1992	1993	1994	1995	1996	1997	1998	1999	2000	2001	2002
Relative Survival Rates (SEER ^b)																				
1-year	61.6	63.3	63.9	65.3	62.3	65.2	64.9	66.1	65.1	66.9	66.3	64.3	66.1	66.5	66.5	66.1	63.9	63.1	65.5	67.7
2-year	51.4	53.4	55.7	55.7	51.0	55.9	55.0	56.2	55.7	58.1	56.8	56.5	56.6	57.3	57.8	56.6	56.7	54.4	57.7	
3-year	45.6	48.2	50.4	50.7	46.3	50.4	50.4	52.4	50.7	53.8	53.0	53.3	52.1	52.6	54.5	52.6	53.2	50.0		
4-year	41.0	43.8	47.0	46.3	42.3	47.0	46.0	49.3	47.7	49.9	49.6	48.9	49.2	49.4	51.6	49.4	50.6			
5-year	37.2	39.8	42.9	43.0	39.8	43.4	43.0	48.4	45.0	46.5	47.1	46.7	47.9	47.2	49.0	47.8				
6-year	34.0	37.5	40.7	40.5	39.0	41.4	40.2	45.2	42.7	44.7	44.9	45.1	46.6	45.7	46.6					
7-year	32.3	35.2	39.0	38.9	36.6	38.3	38.2	42.7	40.5	42.5	42.8	43.2	45.3	44.8						
8-year	30.6	33.5	37.2	36.8	33.7	36.2	36.5	41.2	38.2	40.7	41.8	41.5	42.0							
9-year	29.1	32.1	34.6	35.7	31.6	35.3	34.8	39.6	36.9	38.7	40.2	41.2								
10-year	27.7	30.5	34.1	35.0	30.7	34.3	33.5	38.8	36.2	37.6	39.4									
11-year	26.6	29.5	32.4	33.0	29.8	31.9	32.5	37.1	35.3	35.4										
12-year	25.6	27.9	31.6	32.2	28.9	31.0	31.6	35.6	35.0											
13-year	24.7	26.9	31.3	31.6	27.8	29.3	31.2	33.9												
14-year	24.2	26.5	29.7	30.3	27.8	29.3	31.2													
15-year	23.6	25.9	29.7	29.7	27.8	29.3														
16-year	22.9	25.4	29.7	28.4	27.8															
17-year	22.5	24.9	29.3	28.4																
18-year	22.4	24.8	28.9																	
19-year	22.1	24.2																		
20-year	22.0																			

^a Survival rates are relative rates expressed as percents.^b Rates are from the SEER 9 areas (San Francisco, Connecticut, Detroit, Hawaii, Iowa, New Mexico, Seattle, Utah, and Atlanta).

Table XIII-17

LEUKEMIA

Percent Diagnosed With Cancer In 10, 20 and 30 Years and In Remaining Lifetime,
Given Cancer Free At Current Age By Race and Sex

Lifetime Risk (Percent) of Being Diagnosed (17 SEER Areas) With Cancer and
Lifetime Risk (Percent) of Dying (Total U.S.) From Cancer

2001-2003

Race/ Ethnicity	Current Age	Males				Females			
		+10 yrs	+20 yrs	+30 yrs	Eventually	+10 yrs	+20 yrs	+30 yrs	Eventually
All Races	0	0.06	0.09	0.12	1.49	0.05	0.08	0.09	1.05
	10	0.04	0.06	0.10	1.45	0.02	0.04	0.07	1.01
	20	0.03	0.07	0.13	1.42	0.02	0.05	0.09	0.99
	30	0.04	0.11	0.26	1.41	0.03	0.07	0.17	0.98
	40	0.07	0.22	0.53	1.40	0.05	0.14	0.33	0.96
	50	0.16	0.48	0.96	1.38	0.10	0.29	0.58	0.93
White	0	0.06	0.10	0.13	1.56	0.05	0.08	0.10	1.10
	10	0.04	0.07	0.10	1.52	0.03	0.05	0.07	1.05
	20	0.03	0.07	0.13	1.49	0.02	0.05	0.10	1.03
	30	0.04	0.11	0.26	1.48	0.03	0.08	0.17	1.01
	40	0.07	0.23	0.55	1.46	0.05	0.15	0.35	0.99
	50	0.16	0.50	1.00	1.44	0.10	0.30	0.60	0.96
Black	0	0.03	0.05	0.07	0.94	0.03	0.05	0.06	0.76
	10	0.02	0.05	0.09	0.94	0.02	0.03	0.06	0.75
	20	0.02	0.06	0.13	0.92	0.02	0.04	0.08	0.73
	30	0.04	0.11	0.24	0.92	0.02	0.07	0.14	0.72
	40	0.07	0.21	0.45	0.91	0.04	0.12	0.27	0.71
	50	0.15	0.41	0.70	0.90	0.08	0.24	0.46	0.70
Asian/ Pacific Islander	0	0.06	0.08	0.11	1.01	0.05	0.08	0.09	0.72
	10	0.03	0.05	0.09	0.96	0.02	0.04	0.06	0.67
	20	0.03	0.06	0.12	0.94	0.02	0.04	0.08	0.65
	30	0.04	0.09	0.17	0.92	0.02	0.06	0.12	0.63
	40	0.05	0.13	0.32	0.89	0.04	0.10	0.20	0.61
	50	0.08	0.28	0.57	0.85	0.06	0.16	0.32	0.58
Hispanic ^a	0	0.07	0.11	0.14	1.19	0.06	0.09	0.12	0.93
	10	0.05	0.08	0.12	1.14	0.03	0.05	0.08	0.88
	20	0.03	0.07	0.13	1.10	0.02	0.05	0.10	0.85
	30	0.04	0.09	0.18	1.08	0.03	0.07	0.15	0.83
	40	0.06	0.15	0.35	1.06	0.04	0.12	0.28	0.80
	50	0.09	0.31	0.63	1.03	0.08	0.24	0.45	0.77
60	0.23	0.57	0.88	1.00	0.17	0.38	0.60	0.72	

Race/Ethnicity	Lifetime Risk of Developing		Lifetime Risk of Dying	
	Males	Females	Males	Females
All Races	1.49%	1.05%	0.97%	0.71%
White	1.56%	1.10%	1.02%	0.74%
Black	0.94%	0.76%	0.63%	0.55%
Asian/Pacific Islander	1.01%	0.72%	0.63%	0.49%
Hispanic ^a	1.19%	0.93%	0.72%	0.57%

Devcan Version 6.1.0, April 2006, National Cancer Institute (<http://srab.cancer.gov/devcan/>).

Source: Incidence data are from the SEER 17 areas (San Francisco, Connecticut, Detroit, Hawaii, Iowa, New Mexico, Seattle, Utah, Atlanta, San Jose-Monterey, Los Angeles, Alaska Native Registry, Rural Georgia, California excluding SF/SJM/LA, Kentucky, Louisiana and New Jersey). Mortality data are from the NCHS public use data file for the total US.

^a Hispanic is not mutually exclusive from Whites, Blacks, Asian/Pacific Islanders, and American Indians/Alaska Natives. Underlying incidence data for Hispanics are based on NHIA and exclude cases from Hawaii, Seattle, Alaska Native Registry and Kentucky. Underlying mortality data for Hispanics exclude deaths from Minnesota, New Hampshire and North Dakota.

Table XIII-18
LEUKEMIA (Invasive)

SEER INCIDENCE AND U.S. MORTALITY
AGE-ADJUSTED RATES AND TRENDS^a
By Race/Ethnicity and Sex

SEER Incidence

RACE/ETHNICITY	Rate 2000-2003 ^b			Trend 1994-2003 ^c		
	Rate per 100,000 persons			APC (%)		
	Total	Males	Females	Total	Males	Females
All Races	12.2	15.9	9.4	-0.9*	-1.0*	-1.0*
White	12.7	16.5	9.8	-0.9*	-1.0*	-1.0
White Hispanic ^d	9.7	12.0	8.0	-2.2*	-1.9	-2.4
White Non-Hispanic ^d	12.8	16.8	9.8	-0.6	-0.9	-0.6
Black	10.1	12.9	8.0	-0.5	-0.8	-0.4
Asian/Pacific Islander	7.3	9.2	5.9	-1.4*	-1.0	-1.7
Amer Ind/Alaska Nat ^e	7.1	8.6	5.7	2.0	-	-
Hispanic ^d	9.5	11.7	7.8	-2.2*	-1.8	-2.4

U.S. Mortality^f

RACE/ETHNICITY	Rate 2000-2003			Trend 1994-2003		
	Rate per 100,000 persons			APC (%)		
	Total	Males	Females	Total	Males	Females
All Races	7.5	10.1	5.8	-0.6*	-0.8*	-0.7*
White	7.8	10.4	5.9	-0.5*	-0.6*	-0.6*
White Hispanic ^d	5.4	6.8	4.4	-0.5	-0.6	-0.6
White Non-Hispanic ^d	7.8	10.5	5.9	-0.4*	-0.6*	-0.5*
Black	6.7	8.7	5.3	-1.2*	-1.7*	-0.7
Asian/Pacific Islander	3.9	4.9	3.1	-2.3*	-2.3*	-2.2*
Amer Ind/Alaska Nat	3.9	4.4	3.5	0.0	-1.2	-0.4
Hispanic ^d	5.2	6.5	4.2	-0.6	-0.8	-0.6

- The APC is the Annual Percent Change over the time interval.
- Statistic not shown. Rate based on less than 16 cases for the time interval. Trend based on less than 10 cases for at least one year within the time interval.
- ^a Rates are age-adjusted to the 2000 US Std Population (19 age groups - Census P25-1130). Trends are based on rates age-adjusted to the 2000 US Std Population (19 age groups - Census P25-1130).
- ^b Incidence data used in calculating the rates are from the 17 SEER areas (San Francisco, Connecticut, Detroit, Hawaii, Iowa, New Mexico, Seattle, Utah, Atlanta, San Jose-Monterey, Los Angeles, Alaska Native Registry, Rural Georgia, California excluding SF/SJM/LA, Kentucky, Louisiana and New Jersey).
- ^c Incidence data used in calculating the trends are from the 13 SEER areas (San Francisco, Connecticut, Detroit, Hawaii, Iowa, New Mexico, Seattle, Utah, Atlanta, San Jose-Monterey, Los Angeles, Alaska Native Registry and Rural Georgia).
- ^d Hispanic and Non-Hispanic are not mutually exclusive from Whites, Blacks, Asian/Pacific Islanders, and American Indians/Alaska Natives. Incidence data for Hispanics and Non-Hispanics are based on NHIA and exclude cases from Hawaii, Seattle, Alaska Native Registry and Kentucky. The 2000-2003 Hispanic and Non-Hispanic death rates exclude deaths from Minnesota, New Hampshire and North Dakota. The 1994-2003 Hispanic and Non-Hispanic mortality trends exclude deaths from Maine, Minnesota, New Hampshire, North Dakota, and Oklahoma.
- ^e Incidence data for American Indians/Alaska Natives include cases from Connecticut, Detroit, Iowa, New Mexico, Seattle, Utah, Atlanta, and the Alaska Native Registry. Incidence rates are for diagnosis years 1999-2002. Incidence trends are for diagnosis years 1994-2002.
- ^f Mortality data are analyzed from a public use file provided by the National Center for Health Statistics (NCHS).
- * The APC is significantly different from zero (p<.05).

Table XIII-19

LEUKEMIA

AGE-ADJUSTED SEER INCIDENCE RATES^a
By Registry, Race/Ethnicity and Sex

	All Races			Whites		Blacks		Asian/Pacific Islanders		Hispanics ^b	
	Total	Males	Females	Males	Females	Males	Females	Males	Females	Males	Females
<u>SEER INCIDENCE RATES^a, 2000-2003</u>											
REGISTRY											
17 SEER Areas ^c	12.2	15.9	9.4	16.5	9.8	12.9	8.0	9.2	5.9	11.7	7.8
13 SEER Areas ^c	12.2	15.9	9.4	16.9	10.0	12.3	8.0	9.5	5.7	11.2	7.0
11 SEER Areas ^c	12.2	15.9	9.4	16.9	10.0	12.3	8.0	9.5	5.7	11.2	7.0
9 SEER Areas ^c	12.6	16.4	9.7	17.3	10.2	12.2	8.1	10.3	5.8	11.5	6.7
San Francisco-Oakland	10.2	13.3	7.9	14.1	8.8	12.2	7.1	9.7	4.8	8.3	6.3
Connecticut	12.1	15.9	9.3	16.1	9.6	11.2	6.2	10.7	-	13.6	8.0
Metropolitan Detroit	13.9	17.2	11.4	18.4	11.9	12.7	9.4	-	9.3	13.9	-
Hawaii	10.6	13.3	8.3	17.0	9.9	-	-	10.9	6.9	-	-
Iowa	14.7	19.6	11.1	19.5	11.0	-	-	-	-	-	-
New Mexico	12.5	17.1	8.7	17.8	9.0	-	-	-	-	12.4	6.5
Seattle-Puget Sound	13.8	18.0	10.6	18.6	11.0	11.5	7.5	10.4	5.4	-	-
Utah	12.4	16.3	9.2	16.4	9.4	-	-	-	-	15.6	5.8
Metropolitan Atlanta	11.6	15.2	8.9	16.5	9.7	13.2	7.5	-	-	12.5	7.1
San Jose-Monterey	10.9	14.4	8.3	15.8	9.0	-	-	8.6	5.7	12.9	7.7
Los Angeles	11.3	14.6	8.8	15.6	9.3	12.8	7.9	8.4	5.4	10.7	7.1
Rural Georgia	10.4	13.0	8.7	12.6	-	-	-	-	-	-	-
California exclud. SF/SJM/LA	11.9	15.3	9.2	15.6	9.3	15.8	8.2	8.5	6.3	11.9	8.7
Kentucky	12.6	16.2	10.0	16.3	10.0	12.1	9.0	-	-	-	-
Louisiana	12.4	16.4	9.5	17.5	10.0	13.6	8.2	-	-	16.7	10.4
New Jersey	12.5	16.4	9.8	16.7	9.9	12.6	7.7	6.8	5.7	13.6	8.9

^a Rates are per 100,000 and are age-adjusted to the 2000 US Std Population (19 age groups - Census P25-1130)

^b Hispanic is not mutually exclusive from Whites, Blacks, Asian/Pacific Islanders, and American Indians/Alaska Natives. Incidence data for Hispanics are based on NHIA and exclude cases from Hawaii, Seattle, Alaska Native Registry and Kentucky.

^c The SEER 9 areas are San Francisco, Connecticut, Detroit, Hawaii, Iowa, New Mexico, Seattle, Utah and Atlanta.

The SEER 11 areas comprise the SEER 9 areas plus San Jose-Monterey and Los Angeles.

The SEER 13 areas comprise the SEER 11 areas plus the Alaska Native Registry and Rural Georgia.

The SEER 17 areas comprise the SEER 13 areas plus California excluding SF/SJM/LA, Kentucky, Louisiana and New Jersey

- Statistic not shown. Rate based on less than 16 cases for the time interval.

Table XIII-20

LEUKEMIAAGE-ADJUSTED SEER DEATH RATES^a
By Registry, Race/Ethnicity and Sex

	<u>All Races</u>			<u>Whites</u>		<u>Blacks</u>		<u>Asian/Pacific Islanders</u>		<u>Hispanics^b</u>	
	<u>Total</u>	<u>Males</u>	<u>Females</u>	<u>Males</u>	<u>Females</u>	<u>Males</u>	<u>Females</u>	<u>Males</u>	<u>Females</u>	<u>Males</u>	<u>Females</u>
<u>SEER DEATH RATES^a, 2000-2003</u>											
REGISTRY											
17 SEER Areas ^c	7.4	9.8	5.6	10.3	5.9	9.3	5.6	5.1	3.3	6.5	4.1
13 SEER Areas ^c	7.2	9.7	5.5	10.3	5.8	8.7	5.8	5.5	3.3	6.5	4.1
11 SEER Areas ^c	7.3	9.7	5.5	10.3	5.8	8.7	5.9	5.5	3.3	6.5	4.1
9 SEER Areas ^c	7.4	9.9	5.6	10.5	5.9	8.5	5.8	5.9	3.3	6.7	4.2
San Francisco-Oakland	6.4	8.8	4.6	9.6	5.1	8.6	4.6	6.1	2.8	6.7	3.8
Connecticut	7.5	10.0	5.8	10.2	5.8	9.2	4.5	-	-	4.6	-
Metropolitan Detroit	8.3	10.9	6.5	11.8	6.5	7.5	6.5	-	-	-	-
Hawaii	6.0	7.6	4.6	10.8	6.9	-	-	6.8	4.0	-	-
Iowa	8.4	11.6	6.1	11.6	6.1	-	-	-	-	-	-
New Mexico	6.7	9.1	4.9	9.5	5.1	-	-	-	-	7.1	4.5
Seattle-Puget Sound	7.8	10.2	6.1	10.6	6.4	7.8	-	5.1	2.8	-	-
Utah	7.1	9.6	5.3	9.6	5.3	-	-	-	-	-	-
Metropolitan Atlanta	7.3	9.9	5.7	10.0	5.6	10.4	6.4	-	-	13.2	6.5
San Jose-Monterey	6.5	8.8	4.8	9.7	5.1	-	-	5.1	3.4	6.4	4.0
Los Angeles	6.8	8.9	5.4	9.7	5.7	9.1	6.1	4.9	3.1	6.2	3.9
Rural Georgia	5.9	8.0	-	-	-	-	-	-	-	-	-
California exclud. SF/SJM/LA	7.3	9.6	5.6	10.0	5.8	10.1	5.5	4.2	3.6	6.9	4.1
Kentucky	7.9	10.6	6.0	10.7	6.0	9.8	6.2	-	-	-	-
Louisiana	8.1	11.0	6.2	11.1	6.3	10.7	5.7	-	-	-	-
New Jersey	7.4	9.8	5.7	10.0	6.0	8.7	4.5	3.0	2.0	4.6	4.2
Total U.S.	7.5	10.1	5.8	10.4	5.9	8.7	5.3	4.9	3.1	6.5	4.2

^a NCHS public use data file for the total US. Rates are per 100,000 and are age-adjusted to the 2000 US Std Population (19 age groups - Census P25-1130).

^b Hispanic is not mutually exclusive from Whites, Blacks, Asian/Pacific Islanders, and American Indians/Alaska Natives. The 2000-2003 Hispanic death rates do not include deaths from Minnesota, New Hampshire and North Dakota.

^c The SEER 9 areas are San Francisco, Connecticut, Detroit, Hawaii, Iowa, New Mexico, Seattle, Utah and Atlanta.

The SEER 11 areas comprise the SEER 9 areas plus San Jose-Monterey and Los Angeles.

The SEER 13 areas comprise the SEER 11 areas plus the Alaska Native Registry and Rural Georgia.

The SEER 17 areas comprise the SEER 13 areas plus California excluding SF/SJM/LA, Kentucky, Louisiana and New Jersey

- Statistic not shown. Rate based on less than 16 cases for the time interval.

Table XIII-21
LEUKEMIAAVERAGE ANNUAL AGE-ADJUSTED CANCER DEATH^a RATES BY STATE, ALL RACES, 2000-2003

Males and Females

State	Rate	SE	Rank	PD	State	Rate	SE	Rank	PD
TOTAL U.S.	7.5	0.03							
High Five States									
Delaware	8.6	0.51	(01)	14.7					
Iowa	8.4	0.25	(02)	12.0					
Arkansas	8.3	0.27	(03)	10.7					
Minnesota	8.3	0.20	(04)	10.7					
Wisconsin	8.2	0.19	(05)	9.3					
Low Five States									
New Mexico	6.7	0.31	(47)	-10.7					
Wyoming	6.7	0.59	(48)	-10.7					
Rhode Island	6.6	0.37	(49)	-12.0					
District of Columbia	6.5	0.54	(50)	-13.3					
Hawaii	6.0 ^{bc}	0.34	(51)	-20.0					
Alabama	7.5	0.20	(32)	0.0	Montana	8.0	0.45	(20)	6.7
Alaska	6.8	0.77	(46)	-9.3	Nebraska	8.0	0.33	(17)	6.7
Arizona	6.9 ^c	0.18	(45)	-8.0	Nevada	7.9	0.33	(24)	5.3
Arkansas	8.3	0.27	(03)	10.7	New Hampshire	7.2	0.38	(40)	-4.0
California	7.0 ^c	0.08	(43)	-6.7	New Jersey	7.4	0.14	(35)	-1.3
Colorado	7.3	0.23	(38)	-2.7	New Mexico	6.7	0.31	(47)	-10.7
Connecticut	7.5	0.22	(31)	0.0	New York	6.9 ^c	0.09	(44)	-8.0
Delaware	8.6	0.51	(01)	14.7	North Carolina	7.3	0.15	(37)	-2.7
District of Columbia	6.5	0.54	(50)	-13.3	North Dakota	8.0	0.52	(14)	6.7
Florida	7.4	0.09	(36)	-1.3	Ohio	7.9	0.13	(21)	5.3
Georgia	7.3	0.16	(39)	-2.7	Oklahoma	8.1	0.24	(08)	8.0
Hawaii	6.0 ^{bc}	0.34	(51)	-20.0	Oregon	7.5	0.23	(30)	0.0
Idaho	8.1	0.41	(11)	8.0	Pennsylvania	7.6	0.11	(28)	1.3
Illinois	8.2 ^c	0.13	(06)	9.3	Rhode Island	6.6	0.37	(49)	-12.0
Indiana	8.1	0.18	(09)	8.0	South Carolina	7.6	0.22	(29)	1.3
Iowa	8.4	0.25	(02)	12.0	South Dakota	8.2	0.49	(07)	9.3
Kansas	8.0	0.27	(13)	6.7	Tennessee	7.9	0.19	(22)	5.3
Kentucky	7.9	0.22	(23)	5.3	Texas	7.7	0.10	(26)	2.7
Louisiana	8.1	0.22	(12)	8.0	Utah	7.1	0.33	(41)	-5.3
Maine	7.4	0.36	(34)	-1.3	Vermont	8.0	0.56	(18)	6.7
Maryland	7.6	0.19	(27)	1.3	Virginia	7.4	0.17	(33)	-1.3
Massachusetts	7.1	0.16	(42)	-5.3	Washington	7.8	0.19	(25)	4.0
Michigan	8.0	0.14	(19)	6.7	West Virginia	8.0	0.31	(16)	6.7
Minnesota	8.3	0.20	(04)	10.7	Wisconsin	8.2	0.19	(05)	9.3
Mississippi	8.0	0.27	(15)	6.7	Wyoming	6.7	0.59	(48)	-10.7
Missouri	8.1	0.18	(10)	8.0					

^a NCHS public use data file. Rates are per 100,000 and are age-adjusted to the 2000 US Std Population (19 age groups - Census P25-1130).

^b Absolute percent difference between state rate and total U.S. rate is 15% or more.

^c Difference between state rate and total U.S. rate is statistically significant ($p \leq .0002$).

SE Standard error of the rate.

PD Percent difference between state rate and total U.S. rate.

Table XIII-22
LEUKEMIAAVERAGE ANNUAL AGE-ADJUSTED CANCER DEATH^a RATES BY STATE, ALL RACES, 2000-2003

Males

State	Rate	SE	Rank	PD	State	Rate	SE	Rank	PD
TOTAL U.S.	10.1	0.05							
High Five States									
North Dakota	12.9 ^b	1.01	(01)	27.7					
Arkansas	12.0 ^{bc}	0.51	(02)	18.8					
South Dakota	11.7 ^b	0.90	(03)	15.8					
Iowa	11.6	0.46	(04)	14.9					
Minnesota	11.4	0.38	(05)	12.9					
Low Five States									
New York	9.2 ^c	0.17	(47)	-8.9					
New Mexico	9.1	0.56	(48)	-9.9					
Alaska	8.9	1.41	(49)	-11.9					
Arizona	8.9 ^c	0.31	(50)	-11.9					
Hawaii	7.6 ^{bc}	0.57	(51)	-24.8					
Alabama	9.9	0.38	(35)	-2.0	Montana	11.0	0.82	(08)	8.9
Alaska	8.9	1.41	(49)	-11.9	Nebraska	10.9	0.60	(13)	7.9
Arizona	8.9 ^c	0.31	(50)	-11.9	Nevada	10.3	0.58	(26)	2.0
Arkansas	12.0 ^{bc}	0.51	(02)	18.8	New Hampshire	10.1	0.71	(31)	0.0
California	9.3 ^c	0.14	(45)	-7.9	New Jersey	9.8	0.26	(38)	-3.0
Colorado	9.8	0.41	(37)	-3.0	New Mexico	9.1	0.56	(48)	-9.9
Connecticut	10.0	0.40	(33)	-1.0	New York	9.2 ^c	0.17	(47)	-8.9
Delaware	11.2	0.92	(06)	10.9	North Carolina	9.7	0.28	(41)	-4.0
District of Columbia	9.5	1.07	(43)	-5.9	North Dakota	12.9 ^b	1.01	(01)	27.7
Florida	10.1	0.17	(32)	0.0	Ohio	10.6	0.24	(15)	5.0
Georgia	9.8	0.32	(36)	-3.0	Oklahoma	10.9	0.44	(11)	7.9
Hawaii	7.6 ^{bc}	0.57	(51)	-24.8	Oregon	9.9	0.40	(34)	-2.0
Idaho	10.4	0.71	(23)	3.0	Pennsylvania	10.5	0.21	(20)	4.0
Illinois	11.1 ^c	0.24	(07)	9.9	Rhode Island	9.3	0.69	(46)	-7.9
Indiana	10.9	0.34	(12)	7.9	South Carolina	10.4	0.42	(24)	3.0
Iowa	11.6	0.46	(04)	14.9	South Dakota	11.7 ^b	0.90	(03)	15.8
Kansas	10.6	0.47	(16)	5.0	Tennessee	10.4	0.35	(21)	3.0
Kentucky	10.6	0.41	(17)	5.0	Texas	10.2	0.19	(28)	1.0
Louisiana	11.0	0.41	(09)	8.9	Utah	9.6	0.59	(42)	-5.0
Maine	10.4	0.66	(22)	3.0	Vermont	10.6	1.01	(14)	5.0
Maryland	10.3	0.36	(27)	2.0	Virginia	9.7	0.31	(39)	-4.0
Massachusetts	9.3	0.29	(44)	-7.9	Washington	10.2	0.33	(29)	1.0
Michigan	10.5	0.26	(18)	4.0	West Virginia	10.5	0.56	(19)	4.0
Minnesota	11.4	0.38	(05)	12.9	Wisconsin	10.3	0.33	(25)	2.0
Mississippi	10.2	0.49	(30)	1.0	Wyoming	9.7	1.14	(40)	-4.0
Missouri	11.0	0.34	(10)	8.9					

^a NCHS public use data file. Rates are per 100,000 and are age-adjusted to the 2000 US Std Population (19 age groups - Census P25-1130).

^b Absolute percent difference between state rate and total U.S. rate is 15% or more.

^c Difference between state rate and total U.S. rate is statistically significant ($p \leq .0002$).

SE Standard error of the rate.

PD Percent difference between state rate and total U.S. rate.

Table XIII-23
LEUKEMIAAVERAGE ANNUAL AGE-ADJUSTED CANCER DEATH^a RATES BY STATE, ALL RACES, 2000-2003

Females

State	Rate	SE	Rank	PD	State	Rate	SE	Rank	PD
TOTAL U.S.	5.8	0.03							
High Five States									
Delaware	6.8 ^b	0.60	(01)	17.2					
Wisconsin	6.7 ^{bc}	0.23	(02)	15.5					
Mississippi	6.6	0.32	(03)	13.8					
Idaho	6.4	0.49	(04)	10.3					
Indiana	6.3	0.21	(05)	8.6					
Low Five States									
Rhode Island	4.8 ^b	0.42	(47)	-17.2					
North Dakota	4.7 ^b	0.54	(48)	-19.0					
Hawaii	4.6 ^b	0.40	(49)	-20.7					
District of Columbia	4.6 ^b	0.58	(50)	-20.7					
Wyoming	4.5 ^b	0.64	(51)	-22.4					
Alabama	5.8	0.23	(28)	0.0	Montana	5.8	0.52	(25)	0.0
Alaska	5.0	0.87	(45)	-13.8	Nebraska	6.0	0.37	(19)	3.4
Arizona	5.3	0.21	(41)	-8.6	Nevada	5.8	0.39	(24)	0.0
Arkansas	5.8	0.30	(26)	0.0	New Hampshire	5.3	0.43	(44)	-8.6
California	5.4 ^c	0.09	(39)	-6.9	New Jersey	5.7	0.17	(30)	-1.7
Colorado	5.6	0.26	(35)	-3.4	New Mexico	4.9 ^b	0.35	(46)	-15.5
Connecticut	5.8	0.26	(29)	0.0	New York	5.4	0.11	(38)	-6.9
Delaware	6.8 ^b	0.60	(01)	17.2	North Carolina	5.7	0.18	(31)	-1.7
District of Columbia	4.6 ^b	0.58	(50)	-20.7	North Dakota	4.7 ^b	0.54	(48)	-19.0
Florida	5.3 ^c	0.11	(40)	-8.6	Ohio	6.1	0.15	(17)	5.2
Georgia	5.6	0.19	(34)	-3.4	Oklahoma	6.2	0.28	(11)	6.9
Hawaii	4.6 ^b	0.40	(49)	-20.7	Oregon	5.7	0.27	(32)	-1.7
Idaho	6.4	0.49	(04)	10.3	Pennsylvania	5.6	0.13	(33)	-3.4
Illinois	6.2	0.15	(10)	6.9	Rhode Island	4.8 ^b	0.42	(47)	-17.2
Indiana	6.3	0.21	(05)	8.6	South Carolina	5.8	0.25	(27)	0.0
Iowa	6.1	0.28	(16)	5.2	South Dakota	5.5	0.54	(37)	-5.2
Kansas	6.1	0.31	(15)	5.2	Tennessee	6.2	0.22	(13)	6.9
Kentucky	6.0	0.25	(18)	3.4	Texas	5.9	0.12	(23)	1.7
Louisiana	6.2	0.25	(14)	6.9	Utah	5.3	0.38	(42)	-8.6
Maine	5.3	0.39	(43)	-8.6	Vermont	6.2	0.66	(07)	6.9
Maryland	5.9	0.22	(22)	1.7	Virginia	5.9	0.20	(21)	1.7
Massachusetts	5.5	0.19	(36)	-5.2	Washington	5.9	0.22	(20)	1.7
Michigan	6.2	0.16	(09)	6.9	West Virginia	6.2	0.36	(06)	6.9
Minnesota	6.2	0.24	(12)	6.9	Wisconsin	6.7 ^{bc}	0.23	(02)	15.5
Mississippi	6.6	0.32	(03)	13.8	Wyoming	4.5 ^b	0.64	(51)	-22.4
Missouri	6.2	0.21	(08)	6.9					

^a NCHS public use data file. Rates are per 100,000 and are age-adjusted to the 2000 US Std Population (19 age groups - Census P25-1130).

^b Absolute percent difference between state rate and total U.S. rate is 15% or more.

^c Difference between state rate and total U.S. rate is statistically significant ($p \leq .0002$).

SE Standard error of the rate.

PD Percent difference between state rate and total U.S. rate.

Table XIII-24
LEUKEMIA (Invasive)Estimated United States Cancer Prevalence Counts^a on January 1, 2003
By Race/Ethnicity, Sex and Years Since Diagnosis

Years Since Diagnosis	0 to <5	5 to <10	10 to <15	15 to <20	20 to <25	0 to <13 ^e	0 to <28 ^e	>=28 ^g	Complete ^h
<u>Race/Sex</u>									
All Races ^b	82,812	49,232	28,886	17,622	10,054	150,896	192,632	6,381	199,013
Males	48,279	27,762	16,288	9,832	5,224	86,589	109,292	3,032	112,324
Females	34,533	21,470	12,598	7,790	4,830	64,307	83,340	3,349	86,689
White ^b	73,757	44,001	26,200	16,091	9,134	134,884	172,889	5,415	178,304
Males	43,299	24,794	14,980	9,043	4,758	77,821	98,693	2,223	100,916
Females	30,458	19,207	11,220	7,048	4,376	57,063	74,196	3,192	77,388
Black ^b	5,061	3,047	1,528	883	541	9,126	11,299	616	11,915
Males	2,549	1,594	708	445	264	4,593	5,638	295	5,933
Females	2,512	1,453	820	438	277	4,533	5,661	321	5,982
Asian/Pacific Islander ^c	1,747	970	+	+	+	3,159	+	+	+
Males	987	538	+	+	+	1,764	+	+	+
Females	760	432	+	+	+	1,395	+	+	+
Hispanic ^d	6,505	3,779	+	+	+	11,989	+	+	+
Males	3,546	2,191	+	+	+	6,773	+	+	+
Females	2,959	1,588	+	+	+	5,216	+	+	+

Estimated prevalence percent^a on January 1, 2003, of the SEER 11 population diagnosed in the previous 10 years
By Age at Prevalence, Race/Ethnicity and Sex

Age at Prevalence	Age Specific (Crude)										Age-Adjusted ^f
	All Ages	0-9	10-19	20-29	30-39	40-49	50-59	60-69	70-79	80+	All Ages
<u>Race/Sex</u>											
All Races ^c	0.0413%	0.0284%	0.0303%	0.0131%	0.0143%	0.0240%	0.0474%	0.1029%	0.1515%	0.1650%	0.0432%
Males	0.0482%	0.0299%	0.0327%	0.0143%	0.0171%	0.0293%	0.0613%	0.1359%	0.2062%	0.2210%	0.0543%
Females	0.0345%	0.0268%	0.0277%	0.0118%	0.0113%	0.0187%	0.0343%	0.0735%	0.1103%	0.1345%	0.0341%
White ^c	0.0465%	0.0318%	0.0339%	0.0144%	0.0149%	0.0255%	0.0511%	0.1139%	0.1673%	0.1794%	0.0473%
Males	0.0541%	0.0333%	0.0365%	0.0158%	0.0176%	0.0307%	0.0663%	0.1500%	0.2271%	0.2433%	0.0594%
Females	0.0389%	0.0302%	0.0311%	0.0128%	0.0120%	0.0201%	0.0363%	0.0808%	0.1215%	0.1451%	0.0373%
Black ^c	0.0214%	0.0106%	0.0164%	0.0081%	0.0110%	0.0161%	0.0328%	0.0635%	0.0923%	0.0918%	0.0259%
Males	0.0239%	0.0104%	0.0175%	0.0078%	0.0141%	0.0212%	0.0407%	0.0776%	0.1195%	0.1013%	0.0311%
Females	0.0191%	0.0108%	0.0154%	0.0083%	0.0082%	0.0117%	0.0262%	0.0524%	0.0744%	0.0873%	0.0220%
Asian/Pacific Islander ^c	0.0217%	0.0270%	0.0230%	0.0104%	0.0128%	0.0168%	0.0237%	0.0392%	0.0446%	0.0474%	0.0228%
Males	0.0252%	0.0301%	0.0266%	0.0109%	0.0155%	0.0212%	0.0250%	0.0457%	0.0587%	0.0723%	0.0272%
Females	0.0184%	0.0238%	0.0193%	0.0099%	0.0103%	0.0128%	0.0225%	0.0338%	0.0345%	0.0306%	0.0191%
Hispanic ^d	0.0267%	0.0314%	0.0358%	0.0137%	0.0143%	0.0195%	0.0329%	0.0542%	0.0672%	0.0672%	0.0306%
Males	0.0288%	0.0326%	0.0393%	0.0155%	0.0169%	0.0196%	0.0362%	0.0629%	0.0948%	0.0841%	0.0352%
Females	0.0244%	0.0302%	0.0321%	0.0115%	0.0114%	0.0194%	0.0298%	0.0470%	0.0475%	0.0578%	0.0267%

^a US 2003 cancer prevalence counts are based on 2003 cancer prevalence proportions from the SEER registries and 1/1/2003 US population estimates based on the average of 2002 and 2003 population estimates from the US Bureau of the Census. Prevalence was calculated using the First Malignant Primary Only for a person.

^{b c d} Statistics based on (b) SEER 9 Areas (c) SEER 11 Areas and Rural Georgia (d) NHIA for Hispanic for SEER 11 Areas and Rural Georgia excluding Hawaii and Seattle.

^e Maximum limited-duration prevalence: 28 years for 1975-2003 SEER 9 data; 13 years for 1990-2003 SEER 11 data (used to calculate prevalence for Hispanics and Asian Pacific Islanders).

^f Percentages are age-adjusted to the 2000 US standard population by 5-year age groups.

^{g h} (g) Cases diagnosed more than 28 years ago were estimated using the completeness index method (Capocaccia et. al. 1997, Merrill et. al. 2000). (h) Complete prevalence is obtained by summing 0 to <28 and >=28.

- Statistic not shown. Statistic based on fewer than 5 cases estimated alive in SEER for the time interval.

+ Not available.

Table XIII-25
ACUTE LYMPHOCYTIC LEUKEMIA (Invasive)

Estimated United States Cancer Prevalence Counts^a on January 1, 2003
By Race/Ethnicity, Sex and Years Since Diagnosis

Years Since Diagnosis	0 to <5	5 to <10	10 to <15	15 to <20	20 to <25	0 to <13 ^e	0 to <28 ^e	>=28 ^g	Complete ^h
Race/Sex									
All Races ^b	13,967	10,519	8,957	6,868	5,165	29,995	47,535	3,404	50,939
Males	7,952	5,845	5,007	3,758	2,605	16,864	26,215	1,863	28,078
Females	6,015	4,674	3,950	3,110	2,560	13,131	21,320	1,541	22,861
White ^b	12,273	9,080	7,889	6,081	4,685	26,186	41,927	+	+
Males	7,020	5,041	4,503	3,365	2,381	14,839	23,321	+	+
Females	5,253	4,039	3,386	2,716	2,304	11,347	18,606	+	+
Black ^b	839	751	590	414	244	1,981	2,928	+	+
Males	443	408	280	212	108	1,013	1,482	+	+
Females	396	343	310	202	136	968	1,446	+	+
Asian/Pacific Islander ^c	555	392	+	+	+	1,172	+	+	+
Males	323	229	+	+	+	659	+	+	+
Females	232	163	+	+	+	513	+	+	+
Hispanic ^d	3,156	2,172	+	+	+	6,276	+	+	+
Males	1,716	1,299	+	+	+	3,577	+	+	+
Females	1,440	873	+	+	+	2,699	+	+	+

Estimated prevalence percent^a on January 1, 2003, of the SEER 11 population diagnosed in the previous 10 years
By Age at Prevalence, Race/Ethnicity and Sex

Age at Prevalence	Age Specific (Crude)										Age-Adjusted ^f
	All Ages	0-9	10-19	20-29	30-39	40-49	50-59	60-69	70-79	80+	All Ages
Race/Sex											
All Races ^c	0.0092%	0.0247%	0.0254%	0.0063%	0.0028%	0.0018%	0.0022%	0.0021%	0.0011%	0.0008%	0.0092%
Males	0.0105%	0.0259%	0.0278%	0.0079%	0.0037%	0.0017%	0.0026%	0.0027%	0.0013%	-	0.0102%
Females	0.0080%	0.0234%	0.0228%	0.0046%	0.0019%	0.0020%	0.0019%	0.0016%	0.0010%	0.0009%	0.0082%
White ^c	0.0102%	0.0279%	0.0289%	0.0074%	0.0031%	0.0021%	0.0024%	0.0023%	0.0013%	0.0007%	0.0105%
Males	0.0115%	0.0290%	0.0316%	0.0090%	0.0041%	0.0019%	0.0028%	0.0031%	0.0016%	-	0.0115%
Females	0.0089%	0.0268%	0.0260%	0.0056%	0.0019%	0.0022%	0.0020%	0.0015%	0.0010%	0.0009%	0.0094%
Black ^c	0.0042%	0.0084%	0.0119%	0.0026%	0.0008%	0.0007%	-	-	-	-	0.0037%
Males	0.0047%	0.0081%	0.0127%	0.0035%	-	-	-	-	-	-	0.0039%
Females	0.0038%	0.0087%	0.0112%	0.0018%	-	-	-	-	-	-	0.0034%
Asian/Pacific Islander ^c	0.0070%	0.0220%	0.0185%	0.0034%	0.0029%	0.0013%	0.0019%	0.0022%	-	-	0.0074%
Males	0.0084%	0.0256%	0.0215%	0.0046%	0.0034%	-	0.0020%	-	-	-	0.0085%
Females	0.0056%	0.0182%	0.0153%	0.0023%	0.0024%	0.0015%	0.0018%	0.0029%	-	-	0.0062%
Hispanic ^d	0.0139%	0.0281%	0.0306%	0.0076%	0.0037%	0.0034%	0.0038%	0.0022%	-	-	0.0113%
Males	0.0153%	0.0290%	0.0347%	0.0090%	0.0048%	0.0032%	0.0037%	-	-	-	0.0123%
Females	0.0125%	0.0273%	0.0263%	0.0060%	0.0025%	0.0035%	0.0040%	-	-	-	0.0101%

- ^a US 2003 cancer prevalence counts are based on 2003 cancer prevalence proportions from the SEER registries and 1/1/2003 US population estimates based on the average of 2002 and 2003 population estimates from the US Bureau of the Census. Prevalence was calculated using the First Malignant Primary Only for a person.
- ^{b c d} Statistics based on (b) SEER 9 Areas (c) SEER 11 Areas and Rural Georgia (d) NHIA for Hispanic for SEER 11 Areas and Rural Georgia excluding Hawaii and Seattle.
- ^e Maximum limited-duration prevalence: 28 years for 1975-2003 SEER 9 data; 13 years for 1990-2003 SEER 11 data (used to calculate prevalence for Hispanics and Asian Pacific Islanders).
- ^f Percentages are age-adjusted to the 2000 US standard population by 5-year age groups.
- ^{g h} (g) Cases diagnosed more than 28 years ago were estimated using the completeness index method (Capocaccia et. al. 1997, Merrill et. al. 2000). (h) Complete prevalence is obtained by summing 0 to <28 and >=28.
- Statistic not shown. Statistic based on fewer than 5 cases estimated alive in SEER for the time interval.
- + Not available.

SEER Incidence, Delay Adjusted Incidence and US Death Rates+ Leukemia, by Race and Sex

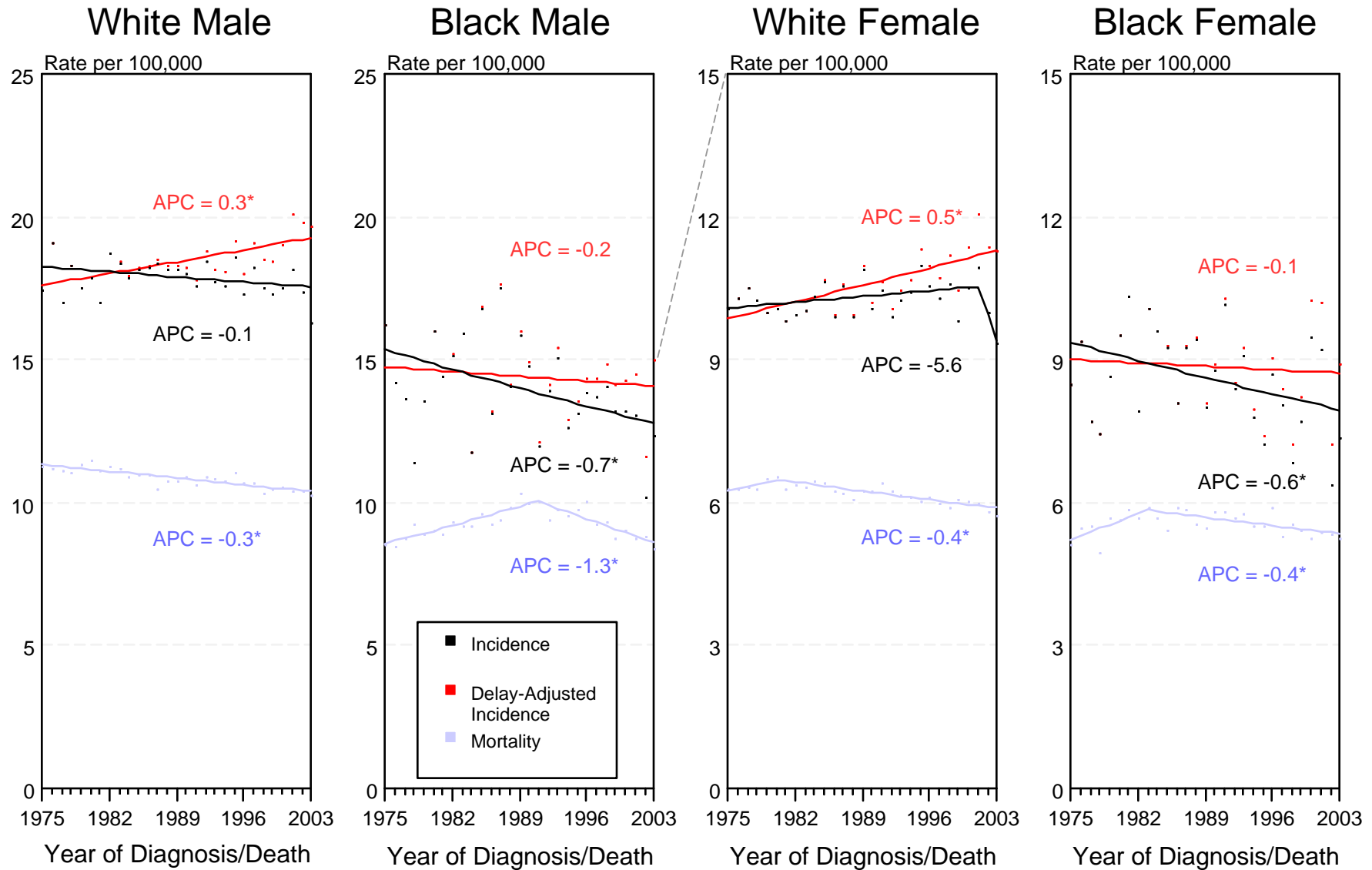


Figure XIII-1

+ Source: SEER 9 areas and NCHS public use data file for the total US. Rates are age-adjusted to the 2000 US Std Population (19 age groups - Census P25-1103). Regression lines and APCs are calculated using the Joinpoint Regression Program Version 3.1, April 2006, National Cancer Institute.

The APC is the Annual Percent Change for the regression line segments. The APC shown on the graph is for the most recent trend.

* The APC is significantly different from zero ($p < 0.05$).

SEER Incidence Rates⁺ Lymphocytic and Myeloid Leukemia (Acute and Chronic), by Sex

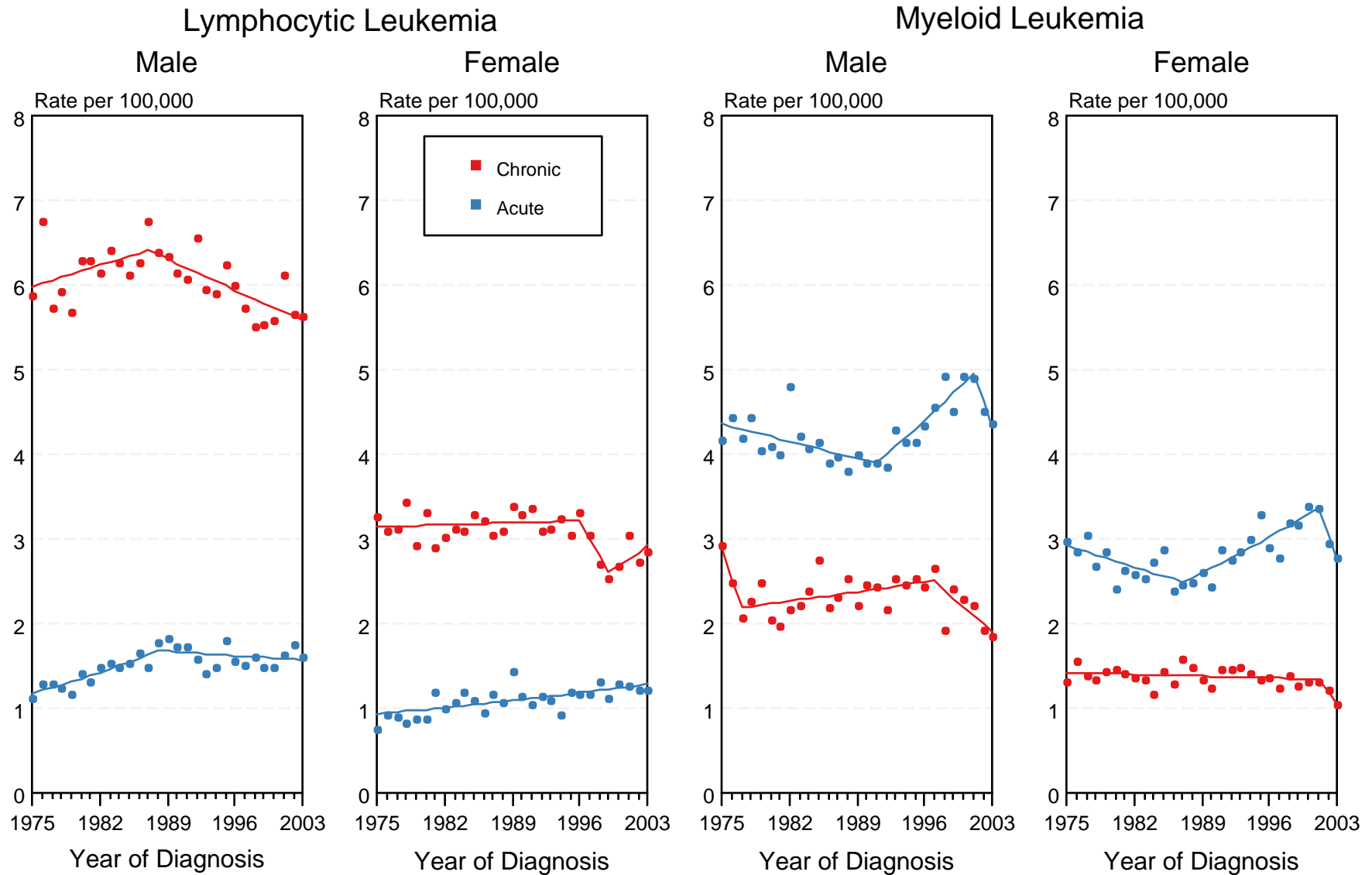


Figure XIII-2

⁺ Source: SEER 9 areas. Rates are age-adjusted to the 2000 US Std Population (19 age groups - Census P25-1103).
Regression lines are calculated using the Joinpoint Regression Program Version 3.1, April 2006, National Cancer Institute.

SEER Incidence and US Death Rates* Leukemia, Both Sexes

Joinpoint Analyses for Whites and Blacks from 1975-2003
and for Asian/Pacific Islanders, American Indians/Alaska Natives and Hispanics from 1992-2003

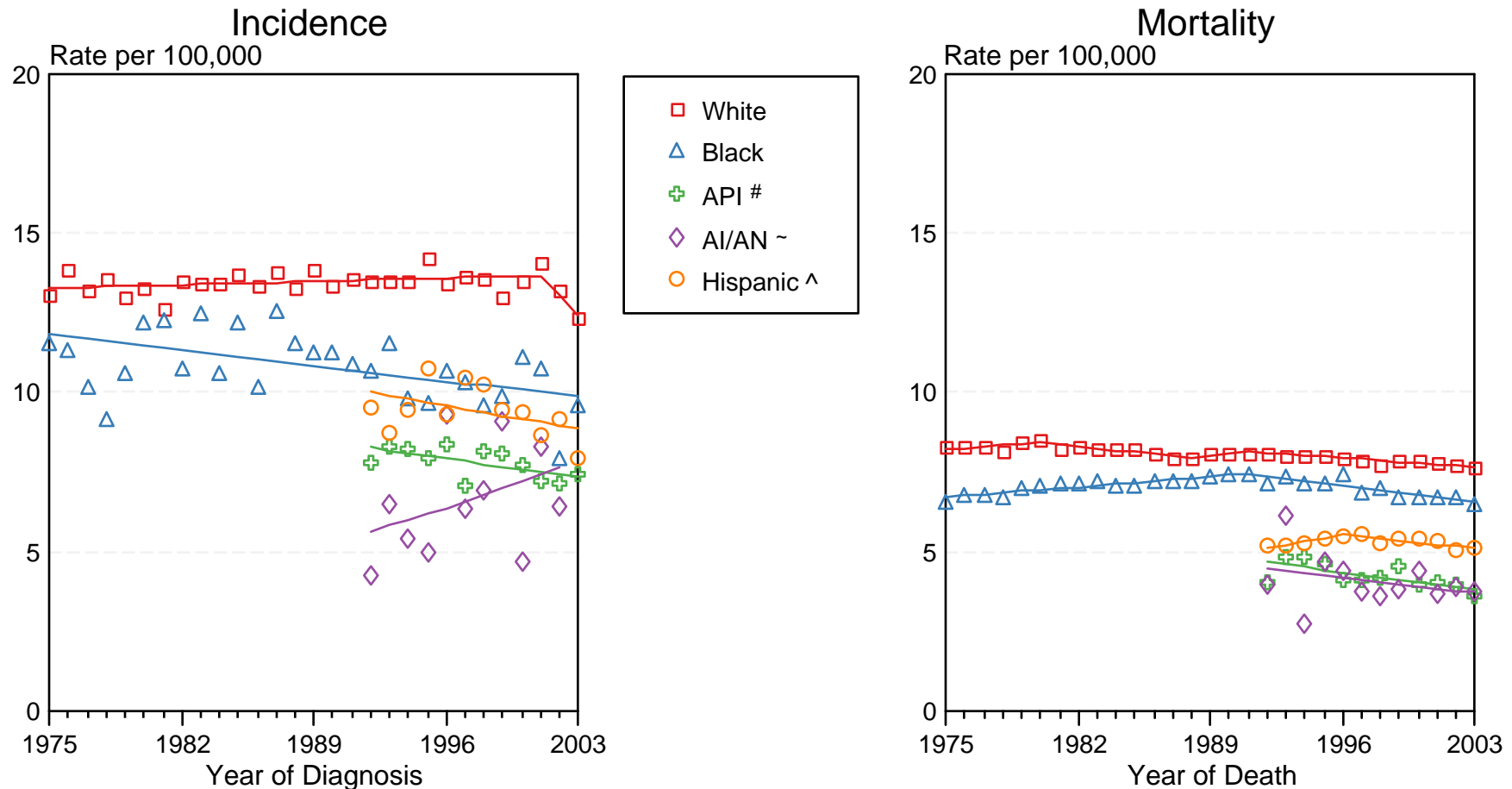


Figure XIII-3

Source: Incidence data for Whites and Blacks are from the SEER 9 areas (San Francisco, Connecticut, Detroit, Hawaii, Iowa, New Mexico, Seattle, Utah, Atlanta). Incidence data for Asian/Pacific Islanders and Hispanics are from the SEER 13 Areas (SEER 9 Areas, San Jose-Monterey, Los Angeles, Alaska Native Registry and Rural Georgia). Mortality data are from NCHS public use data file for the total US.

* Rates are age-adjusted to the 2000 US Std Population (19 age groups - Census P25-1103).

Regression lines are calculated using the Joinpoint Regression Program Version 3.1, April 2006, National Cancer Institute.

API = Asian/Pacific Islander.

~ AI/AN = American Indian/Alaska Native. Incidence data for AI/AN include cases from Connecticut, Detroit, Iowa, New Mexico, Seattle, Utah, Atlanta and the Alaska Native Registry for the time period 1992-2002. Mortality data are from the entire US for the time period 1992-2003.

^ Hispanic is not mutually exclusive from Whites, Blacks, Asian/Pacific Islanders, and American Indians/Alaska Natives. Incidence data for Hispanics are based on NHIA and exclude cases from Hawaii, Seattle, and the Alaska Native Registry. Mortality data for Hispanics exclude cases from Connecticut, Maine, Maryland, Minnesota, New Hampshire, New York, North Dakota, Oklahoma, and Vermont.