

Table XXII-1
PANCREAS CANCER (Invasive)

TRENDS IN SEER INCIDENCE^a AND U.S. MORTALITY^b USING THE JOINPOINT REGRESSION PROGRAM, 1975-2005
WITH UP TO THREE JOINPOINTS BY RACE AND SEX

		Joinpoint Trend 1		Joinpoint Trend 2		Joinpoint Trend 3		Joinpoint Trend 4		AAPC ^c	
		Years	APC	Years	APC	Years	APC	Years	APC	1996-2005	2001-2005
<u>SEER Cancer Incidence^a</u>											
All Races	Both Sexes	1975-1978	-2.1	1978-1984	1.1	1984-1993	-0.9*	1993-2005	0.4*	0.4*	0.4*
All Races	Male	1975-1993	-0.9*	1993-2005	0.3					0.3	0.3
All Races	Female	1975-1983	1.3*	1983-2005	-0.1					-0.1	-0.1
White	Both Sexes	1975-1978	-2.5	1978-1984	1.0	1984-1993	-1.0*	1993-2005	0.5*	0.5*	0.5*
White	Male	1975-1981	-2.3*	1981-1984	1.7	1984-1993	-1.4*	1993-2005	0.6*	0.6*	0.6*
White	Female	1975-1984	1.6*	1984-1987	-2.5	1987-2005	0.2			0.2	0.2
Black	Both Sexes	1975-2005	-0.3*							-0.3*	-0.3*
Black	Male	1975-2005	-0.7*							-0.7*	-0.7*
Black	Female	1975-2005	0.0							0.0	0.0
<u>SEER Delay-Adjusted Incidence^a</u>											
All Races	Both Sexes	1975-1978	-2.1	1978-1984	1.1	1984-1993	-0.9*	1993-2005	0.5*	0.5*	0.5*
All Races	Male	1975-1993	-0.9*	1993-2005	0.4					0.4*	0.4*
All Races	Female	1975-1984	1.5*	1984-1994	-0.6	1994-2005	0.6*			0.6*	0.6*
White	Both Sexes	1975-1978	-2.5	1978-1984	1.0	1984-1994	-0.9*	1994-2005	0.8*	0.8*	0.8*
White	Male	1975-1981	-2.3*	1981-1984	1.7	1984-1993	-1.5*	1993-2005	0.8*	0.8*	0.8*
White	Female	1975-1984	1.2*	1984-1999	-0.4	1999-2005	1.6*			0.9*	1.6*
Black	Both Sexes	1975-2005	-0.3							-0.3	-0.3
Black	Male	1975-2005	-0.6*							-0.6*	-0.6*
Black	Female	1975-2005	0.1							0.1	0.1
<u>U.S. Cancer Mortality^b</u>											
All Races	Both Sexes	1975-2003	-0.1*	2003-2005	1.2					0.2	0.6
All Races	Male	1975-1986	-0.8*	1986-2003	-0.3*	2003-2005	1.3			0.1	0.5
All Races	Female	1975-1984	0.8*	1984-2005	0.1*					0.1*	0.1*
White	Both Sexes	1975-1997	-0.2*	1997-2005	0.4*					0.3*	0.4*
White	Male	1975-1986	-1.0*	1986-1996	-0.3*	1996-2005	0.2			0.2	0.2
White	Female	1975-1983	0.6*	1983-2005	0.1*					0.1*	0.1*
Black	Both Sexes	1975-1990	1.1*	1990-2005	-0.8*					-0.8*	-0.8*
Black	Male	1975-1990	0.6*	1990-2005	-1.1*					-1.1*	-1.1*
Black	Female	1975-1984	2.6*	1984-1993	0.5	1993-2005	-0.7*			-0.7*	-0.7*

Joinpoint Regression Program Version 3.3.1, April 2008, National Cancer Institute. (<http://srab.cancer.gov/joinpoint/>).
 The APC is the Annual Percent Change based on rates age-adjusted to the 2000 US Std Population (19 age groups - Census P25-1130).
 Trends are from the SEER 9 areas (San Francisco, Connecticut, Detroit, Hawaii, Iowa, New Mexico, Seattle, Utah, and Atlanta).
 Trends are from US Mortality Files, National Center for Health Statistics, Centers for Disease Control and Prevention.
 The AAPC is the Average Annual Percent Change and is based on the APCs calculated by Joinpoint over the time range of 1975-2005.
 The APC/AAPC is significantly different from zero ($p < .05$).

a
b
c
*

Table XXII-1a
PANCREAS CANCER (Invasive)

TRENDS IN SEER INCIDENCE^a AND U.S. MORTALITY^b USING THE JOINTPOINT REGRESSION PROGRAM, 1975-2005
 WITH UP TO FOUR JOINTPOINTS BY RACE AND SEX

		<u>Jointpoint Trend 1</u>		<u>Jointpoint Trend 2</u>		<u>Jointpoint Trend 3</u>		<u>Jointpoint Trend 4</u>		<u>Jointpoint Trend 5</u>		<u>AAPC^c</u>
		Years	APC	Years	APC	Years	APC	Years	APC	Years	APC	2001-2005
<u>SEER Cancer Incidence^a</u>												
All Races	Both Sexes	1975-1978	-2.1	1978-1984	1.1	1984-1993	-0.9*	1993-2005	0.4*			0.4*
All Races	Male	1975-1993	-0.9*	1993-2005	0.3							0.3
All Races	Female	1975-1983	1.3*	1983-2005	-0.1							-0.1
White	Both Sexes	1975-1978	-2.5	1978-1984	1.0	1984-1993	-1.0*	1993-2005	0.5*			0.5*
White	Male	1975-1994	-1.0*	1994-2005	0.6*							0.6*
White	Female	1975-1984	1.6*	1984-1987	-2.5	1987-2005	0.2					0.2
Black	Both Sexes	1975-2005	-0.3*									-0.3*
Black	Male	1975-2005	-0.7*									-0.7*
Black	Female	1975-2005	0.0									0.0
<u>SEER Delay-Adjusted Incidence^a</u>												
All Races	Both Sexes	1975-1978	-2.1	1978-1984	1.1	1984-1993	-0.9*	1993-2005	0.5*			0.5*
All Races	Male	1975-1993	-0.9*	1993-2005	0.4							0.4*
All Races	Female	1975-1984	1.5*	1984-1994	-0.6	1994-2005	0.6*					0.6*
White	Both Sexes	1975-1978	-2.5	1978-1984	1.0	1984-1994	-0.9*	1994-2005	0.8*			0.8*
White	Male	1975-1994	-1.0*	1994-2005	0.8*							0.8*
White	Female	1975-1984	1.2*	1984-1999	-0.4	1999-2005	1.6*					1.6*
Black	Both Sexes	1975-2005	-0.3									-0.3
Black	Male	1975-2005	-0.6*									-0.6*
Black	Female	1975-2005	0.1									0.1
<u>U.S. Cancer Mortality^b</u>												
All Races	Both Sexes	1975-2003	-0.1*	2003-2005	1.2							0.6
All Races	Male	1975-1986	-0.8*	1986-2003	-0.3*	2003-2005	1.3					0.5
All Races	Female	1975-1984	0.8*	1984-2005	0.1*							0.1*
White	Both Sexes	1975-1997	-0.2*	1997-2005	0.4*							0.4*
White	Male	1975-1986	-1.0*	1986-1996	-0.3*	1996-2005	0.2					0.2
White	Female	1975-1983	0.6*	1983-2005	0.1*							0.1*
Black	Both Sexes	1975-1990	1.1*	1990-2005	-0.8*							-0.8*
Black	Male	1975-1990	0.6*	1990-2005	-1.1*							-1.1*
Black	Female	1975-1989	1.9*	1989-2005	-0.6*							-0.6*

Jointpoint Regression Program Version 3.3.1, April 2008, National Cancer Institute. (<http://srab.cancer.gov/jointpoint/>).

The APC is the Annual Percent Change based on rates age-adjusted to the 2000 US Std Population (19 age groups - Census P25-1130).

Trends are from the SEER 9 areas (San Francisco, Connecticut, Detroit, Hawaii, Iowa, New Mexico, Seattle, Utah, and Atlanta).

Trends are from US Mortality Files, National Center for Health Statistics, Centers for Disease Control and Prevention.

The AAPC is the Average Annual Percent Change and is based on the APCs calculated by Jointpoint over the time range of 1975-2005.

The APC/AAPC is significantly different from zero ($p < .05$).

a
b
c
*

Table XXII-2
PANCREAS CANCER (Invasive)

AGE ADJUSTED SEER INCIDENCE^a RATES BY YEAR, RACE AND SEX

	<u>All Races</u>			<u>Whites</u>			<u>Blacks</u>		
	<u>Total</u>	<u>Males</u>	<u>Females</u>	<u>Total</u>	<u>Males</u>	<u>Females</u>	<u>Total</u>	<u>Males</u>	<u>Females</u>
<u>AGE-ADJUSTED RATES</u>									
<u>YEAR OF DIAGNOSIS:</u>									
1975	11.8	15.6	9.1	11.7	15.6	8.9	15.9	18.1	13.9
1976	12.0	14.8	9.9	11.8	14.5	9.8	17.6	22.7	14.0
1977	11.9	14.8	9.8	11.6	14.6	9.5	17.1	19.4	15.2
1978	11.1	14.1	8.9	10.8	13.9	8.6	15.1	20.0	11.5
1979	11.5	14.2	9.7	11.2	13.8	9.4	16.1	19.1	13.7
1980	11.5	14.2	9.6	11.1	13.7	9.2	17.9	21.8	15.5
1981	11.7	13.5	10.2	11.4	13.3	9.9	17.2	20.9	14.1
1982	11.7	13.8	10.2	11.4	13.5	9.9	16.9	21.0	14.0
1983	12.2	14.7	10.4	11.7	14.1	10.1	18.1	23.1	14.9
1984	12.2	13.9	10.9	12.0	13.9	10.6	17.2	18.4	16.3
1985	12.1	14.3	10.5	11.7	13.6	10.3	18.7	25.0	14.6
1986	11.7	13.8	10.2	11.4	13.5	9.8	17.3	20.2	15.6
1987	11.6	13.8	10.1	11.1	13.4	9.5	18.4	19.0	17.9
1988	11.7	13.7	10.2	11.1	13.4	9.6	18.6	19.5	17.4
1989	11.3	12.9	10.1	11.0	12.7	9.6	15.0	16.0	14.0
1990	11.3	12.8	10.1	11.0	12.5	9.8	15.2	18.8	12.6
1991	11.4	12.9	10.2	11.0	12.6	9.8	17.0	18.2	16.2
1992	11.6	13.2	10.3	11.3	12.9	10.0	17.3	19.8	15.8
1993	11.0	12.5	9.7	10.5	12.0	9.3	16.8	18.7	15.1
1994	11.4	13.3	9.9	10.9	12.3	9.7	17.4	21.5	14.5
1995	11.1	12.7	10.0	10.7	12.3	9.6	18.1	20.3	16.3
1996	11.3	12.9	9.9	10.9	12.5	9.6	17.1	19.7	14.9
1997	11.5	13.0	10.2	11.0	12.5	9.7	17.9	19.4	16.6
1998	11.5	13.1	10.2	11.2	13.0	9.9	14.7	16.2	13.9
1999	11.1	12.6	9.8	10.7	12.2	9.3	16.7	19.5	14.7
2000	11.4	13.3	9.8	11.1	12.9	9.6	15.7	18.1	13.2
2001	11.3	13.1	10.0	11.0	13.0	9.5	14.2	15.4	13.3
2002	11.7	13.0	10.5	11.5	13.2	10.0	15.9	14.9	16.0
2003	11.5	12.7	10.5	11.3	12.5	10.2	15.8	16.7	15.2
2004	11.8	13.7	10.2	11.6	13.4	10.0	15.6	18.9	13.1
2005	11.6	13.3	10.2	11.3	13.0	9.9	16.2	17.5	15.4
1975-2005	11.5	13.4	10.1	11.2	13.1	9.7	16.6	19.0	14.9

^a SEER 9 areas (San Francisco, Connecticut, Detroit, Hawaii, Iowa, New Mexico, Seattle, Utah, and Atlanta). Rates are per 100,000 and are age-adjusted to the 2000 US Std Population (19 age groups - Census P25-1130).

- Statistic not shown. Rate based on less than 16 cases for the time interval.

Table XXII-3
PANCREAS CANCER (Invasive)

AGE-ADJUSTED U.S. DEATH^a RATES BY YEAR, RACE AND SEX

	<u>All Races</u>			<u>Whites</u>			<u>Blacks</u>		
	<u>Total</u>	<u>Males</u>	<u>Females</u>	<u>Total</u>	<u>Males</u>	<u>Females</u>	<u>Total</u>	<u>Males</u>	<u>Females</u>
<u>AGE-ADJUSTED RATES</u>									
<u>YEAR OF DEATH:</u>									
1975	10.7	13.8	8.4	10.5	13.6	8.3	12.8	16.3	10.1
1976	10.7	13.6	8.6	10.5	13.4	8.4	12.9	16.0	10.5
1977	10.9	13.9	8.8	10.7	13.6	8.6	13.2	17.1	10.3
1978	10.8	13.6	8.8	10.6	13.5	8.6	12.9	15.9	10.7
1979	10.7	13.4	8.8	10.5	13.3	8.6	13.4	15.9	11.6
1980	10.6	13.1	8.8	10.4	12.8	8.6	13.8	16.5	11.8
1981	10.7	13.2	8.9	10.5	12.9	8.8	13.4	17.0	10.8
1982	10.6	13.1	8.8	10.3	12.8	8.6	14.1	17.1	11.9
1983	10.7	12.8	9.1	10.4	12.4	8.9	14.8	18.1	12.5
1984	10.8	13.0	9.2	10.5	12.6	8.9	15.0	17.5	13.1
1985	10.6	12.9	9.0	10.3	12.5	8.8	14.4	17.3	12.4
1986	10.6	12.5	9.2	10.3	12.2	8.9	14.6	16.7	13.0
1987	10.6	12.5	9.2	10.3	12.2	8.9	14.6	17.4	12.6
1988	10.5	12.5	9.0	10.1	12.2	8.6	14.5	17.1	12.7
1989	10.6	12.6	9.2	10.3	12.2	8.8	15.0	17.7	13.2
1990	10.7	12.6	9.3	10.3	12.2	8.9	15.2	18.1	13.2
1991	10.7	12.6	9.3	10.4	12.3	9.0	14.5	16.9	12.8
1992	10.7	12.6	9.3	10.3	12.2	8.9	15.4	18.2	13.4
1993	10.7	12.4	9.4	10.3	12.1	9.0	15.0	17.6	13.3
1994	10.6	12.4	9.3	10.3	12.0	9.0	15.2	17.7	13.4
1995	10.4	12.1	9.2	10.2	11.9	8.9	13.9	15.8	12.5
1996	10.5	12.1	9.2	10.2	11.8	8.9	14.4	16.4	13.0
1997	10.5	12.2	9.1	10.2	12.0	8.8	14.6	16.4	13.1
1998	10.5	12.3	9.2	10.2	12.0	8.8	14.5	16.5	13.1
1999	10.6	12.3	9.3	10.4	12.1	9.0	14.2	16.6	12.4
2000	10.5	12.1	9.3	10.3	12.0	9.0	14.0	15.8	12.7
2001	10.5	12.1	9.3	10.4	12.0	9.0	13.7	15.0	12.5
2002	10.5	12.2	9.2	10.3	12.0	8.9	13.7	15.4	12.3
2003	10.5	12.0	9.2	10.3	11.9	9.0	13.8	15.5	12.4
2004	10.6	12.4	9.2	10.5	12.2	9.0	13.7	15.6	12.1
2005	10.8	12.4	9.4	10.6	12.2	9.2	13.7	15.5	12.4
1975-2005	10.6	12.6	9.1	10.4	12.4	8.9	14.2	16.6	12.5

^a US Mortality Files, National Center for Health Statistics, Centers for Disease Control and Prevention. Rates are per 100,000 and are age-adjusted to the 2000 US Std Population (19 age groups - Census P25-1130).

- Statistic not shown. Rate based on less than 16 cases for the time interval.

Table XXII-4
PANCREAS CANCER (Invasive)

SEER INCIDENCE^a AND U.S. DEATH^b RATES, AGE-ADJUSTED AND AGE-SPECIFIC RATES, BY RACE AND SEX

	All Races			Whites			Blacks		
	Total	Males	Females	Total	Males	Females	Total	Males	Females
<u>SEER INCIDENCE</u>									
<u>AGE AT DIAGNOSIS</u>									
AGE-ADJUSTED RATES, 2001-2005									
All ages	11.5	13.0	10.3	11.4	13.0	10.0	15.2	16.2	14.3
Under 65	3.8	4.5	3.1	3.7	4.4	3.0	5.3	6.2	4.6
65 and over	64.8	71.9	59.5	64.3	72.1	58.5	83.7	85.2	81.5
All ages(IARC world std) ^c	7.0	8.0	6.1	6.9	7.9	5.9	9.5	10.5	8.6
AGE-SPECIFIC RATES, 2001-2005									
<1	-	-	-	-	-	-	-	-	-
1-4	-	-	-	-	-	-	-	-	-
5-9	-	-	-	-	-	-	-	-	-
10-14	-	-	-	-	-	-	-	-	-
15-19	-	-	-	-	-	-	-	-	-
20-24	0.1	-	-	-	-	-	-	-	-
25-29	0.2	0.2	0.2	0.2	0.2	0.2	-	-	-
30-34	0.4	0.4	0.5	0.4	0.4	0.5	0.5	-	-
35-39	1.0	1.1	0.9	1.0	1.0	0.9	1.3	1.8	-
40-44	2.3	2.8	1.8	2.2	2.7	1.7	2.8	3.1	2.6
45-49	5.1	6.0	4.3	4.9	5.9	4.0	7.8	8.5	7.3
50-54	10.1	12.2	8.1	9.9	12.0	7.8	15.5	18.7	12.8
55-59	17.6	21.2	14.2	17.4	20.9	14.0	24.4	31.9	18.1
60-64	28.9	33.8	24.4	28.6	33.9	23.6	40.0	42.0	38.5
65-69	42.0	47.6	37.1	41.1	46.9	35.9	61.1	70.6	53.8
70-74	58.2	66.3	51.8	58.0	66.3	51.2	77.4	90.2	68.4
75-79	72.4	82.3	65.4	72.8	83.9	64.8	87.2	81.1	91.0
80-84	86.3	95.8	80.3	85.6	96.1	79.1	106.5	108.0	105.7
85+	90.9	91.2	90.7	89.6	91.2	88.9	114.6	87.7	125.6
<u>U.S. MORTALITY</u>									
<u>AGE AT DEATH</u>									
AGE-ADJUSTED RATES, 2001-2005									
All ages	10.6	12.2	9.3	10.4	12.1	9.0	13.7	15.4	12.4
Under 65	3.2	3.9	2.5	3.1	3.8	2.4	4.5	5.7	3.6
65 and over	61.9	69.6	56.3	61.2	69.4	55.1	77.0	82.8	72.8
All ages(IARC world std) ^c	6.2	7.3	5.3	6.1	7.2	5.1	8.3	9.6	7.2
AGE-SPECIFIC RATES, 2001-2005									
<1	-	-	-	-	-	-	-	-	-
1-4	-	-	-	-	-	-	-	-	-
5-9	-	-	-	-	-	-	-	-	-
10-14	-	-	-	-	-	-	-	-	-
15-19	-	-	-	-	-	-	-	-	-
20-24	0.0	0.0	-	0.0	-	-	-	-	-
25-29	0.1	0.1	0.1	0.1	0.1	0.1	0.1	-	-
30-34	0.2	0.3	0.2	0.2	0.2	0.2	0.2	0.4	-
35-39	0.7	0.8	0.5	0.7	0.8	0.5	0.8	1.1	0.6
40-44	1.8	2.2	1.5	1.7	2.1	1.4	2.5	2.9	2.1
45-49	4.2	5.2	3.2	4.0	5.0	3.1	6.1	7.8	4.7
50-54	8.6	10.7	6.6	8.1	10.2	6.1	13.2	16.7	10.2
55-59	15.3	18.9	11.8	14.8	18.3	11.4	21.9	28.2	16.7
60-64	24.9	30.4	20.0	24.4	29.9	19.2	34.5	41.4	29.1
65-69	37.1	43.7	31.4	36.5	43.2	30.5	48.6	57.2	42.2
70-74	52.7	60.7	46.4	51.8	59.9	45.2	69.8	80.5	62.5
75-79	68.5	77.5	62.1	67.8	77.4	60.9	85.4	91.5	81.7
80-84	85.3	95.6	79.0	84.6	95.7	77.8	100.7	107.1	97.3
85+	97.2	101.8	95.2	96.6	102.5	93.9	113.1	101.0	117.8

^a SEER 17 areas. Rates are per 100,000 and are age-adjusted to the 2000 US Std Population (19 age groups - Census P25-1130), unless noted.

^b US Mortality Files, National Center for Health Statistics, Centers for Disease Control and Prevention. Rates are per 100,000 and are age-adjusted to the 2000 US Std Population (19 age groups - Census P25-1130), unless noted.

^c Rates are per 100,000 and are age-adjusted to the IARC world standard population.

- Statistic not shown. Rate based on less than 16 cases for the time interval.

Table XXII-5
PANCREAS CANCER (Invasive)

SURVIVAL RATES, BY RACE, SEX, DIAGNOSIS YEAR, STAGE AND AGE

	All Races			Whites			Blacks		
	Total	Males	Females	Total	Males	Females	Total	Males	Females
<u>5-YR RELATIVE SURVIVAL RATES</u>									
YEAR OF DIAGNOSIS:									
1960-1963 ^a	-	-	-	1	1	2	1	0	3
1970-1973 ^a	-	-	-	2	2	2	2	0	3
1975-1977 ^b	2.5	2.7	2.2	2.5	2.7	2.3	2.3	2.7	2.0
1978-1980 ^b	3.0	2.8	3.2	2.7	2.6	2.7	5.9	4.3	7.4
1981-1983 ^b	3.0	2.6	3.3	2.8	2.3	3.2	3.7	4.0	3.3
1984-1986 ^b	3.0	2.4	3.5	2.7	2.2	3.1	4.9	4.2	5.4
1987-1989 ^b	3.8	3.5	4.1	3.4	3.2	3.5	5.9	5.5	6.1
1990-1992 ^b	4.5	4.2	4.8	4.7	4.4	4.9	3.7	3.2	4.0
1993-1995 ^b	4.2	3.9	4.6	4.2	3.8	4.6	3.7	3.5	3.9
1996-2004 ^b	5.1 ^e	5.1 ^e	5.0 ^e	4.9 ^e	5.4 ^e	4.5 ^e	4.6 ^e	3.2	6.0 ^e
<u>5-YR PERIOD SURVIVAL RATES^{cd}</u>									
YEAR OF DIAGNOSIS:									
1996-2004	5.5	5.5	5.4	5.4	5.6	5.2	5.2	4.3	5.8
<u>STAGE DISTRIBUTION (%) 1996-2004^c</u>									
All Stages									
Number of cases	44,588	21,658	22,930	36,197	17,727	18,470	5,004	2,268	2,736
Percent	100%	100%	100%	100%	100%	100%	100%	100%	100%
Localized	7	7	8	7	7	8	8	7	10
Regional	26	26	26	26	26	26	24	23	24
Distant	52	55	49	52	55	49	55	59	51
Unstaged	15	13	16	15	13	17	13	11	15
<u>5-YR RELATIVE SURVIVAL RATES, 1996-2004^c</u>									
AGE AT DIAGNOSIS:									
<45	19.2	14.7	25.1	18.3	14.9	22.9	19.3	14.7	26.3
45-54	8.2	7.4	9.4	8.2	8.1	8.4	6.8	4.0	10.7
55-64	5.4	4.7	6.3	5.4	4.7	6.3	4.5	3.4	5.9
65-74	4.0	3.8	4.2	4.1	4.2	4.0	3.0	2.4	3.5
75+	2.6	2.9	2.5	2.7	2.9	2.5	1.6	0.5	2.0
Under 65	7.9	6.7	9.5	7.7	6.9	8.9	7.1	5.0	9.6
65 and over	3.3	3.5	3.2	3.4	3.6	3.2	2.4	1.8	2.8
STAGE:									
All Stages	5.1	5.0	5.2	5.0	5.1	4.9	4.6	3.6	5.4
Localized	20.0	17.9	21.6	20.3	19.0	21.1	15.4	11.3	17.6
Regional	8.2	8.5	8.0	8.3	9.1	7.6	6.9	4.6	8.6
Distant	1.8	2.0	1.6	1.6	1.8	1.4	2.1	2.5	1.7
Unstaged	4.3	4.8	3.8	3.9	4.7	3.2	4.5	3.1	5.4

^a Rates are based on End Results data from a series of hospital registries and one population-based registry.
^b Rates are from the SEER 9 areas (San Francisco, Connecticut, Detroit, Hawaii, Iowa, New Mexico, Seattle, Utah, Atlanta).
^c Rates are based on follow-up of patients into 2005.
^d Rates are from the SEER 17 areas (San Francisco, Connecticut, Detroit, Hawaii, Iowa, New Mexico, Seattle, Utah, Atlanta, San Jose-Monterey, Los Angeles, Alaska Native Registry, Rural Georgia, California excluding SF/SJM/LA, Kentucky, Louisiana and New Jersey). California excluding SF/SJM/LA, Kentucky, Louisiana, and New Jersey contribute cases for diagnosis years 2000-2004. The remaining 13 SEER Areas contribute cases for the entire period 1996-2004. Rates are based on follow-up of patients into 2005.
^e Period survival provides a more up-to-date estimate of survival by piecing together the most recent conditional survival estimates from several cohorts. It is computed here using three calendar year blocks (2002-2004: 0-1 year survival), (2001-2003: 1-2 year survival), (2000-2002: 2-3 year survival), (1999-2001: 3-4 year survival), (1998-2000: 4-5 years survival).
^f The difference in rates between 1975-1977 and 1996-2004 is statistically significant (p<.05).
^g The standard error of the survival rate is between 5 and 10 percentage points.
^h The standard error of the survival rate is greater than 10 percentage points.
ⁱ Statistic could not be calculated due to fewer than 16 cases during the time period.

Table XXII-6
PANCREAS CANCER (Invasive)

SURVIVAL RATES^a

By Year of Diagnosis

All Races, Males and Females

Year of Diagnosis

	1975- 1979	1980- 1984	1985	1986	1987	1988	1989	1990	1991	1992	1993	1994	1995	1996	1997	1998	1999	2000	2001	2002	2003	2004
Relative Survival Rates (SEER ^b)																						
1-year	15.2	17.2	16.3	18.2	18.8	18.3	19.9	19.5	20.1	20.4	18.3	19.8	18.8	20.1	21.4	20.9	23.7	23.5	24.9	26.3	23.9	24.2
2-year	6.2	6.6	6.4	6.5	8.0	6.9	8.0	8.5	9.3	9.0	8.5	9.3	8.6	9.9	10.0	8.9	10.8	11.1	11.7	12.1	11.4	
3-year	3.7	4.3	5.1	4.5	5.7	4.7	5.0	5.6	6.5	5.9	5.2	6.8	5.6	6.7	7.1	5.9	7.0	7.6	7.4	8.5		
4-year	3.0	3.5	4.0	3.4	4.8	3.7	4.1	4.4	5.4	5.2	4.4	5.5	4.3	5.1	5.7	4.6	5.9	6.3	6.1			
5-year	2.6	3.0	3.3	2.9	4.2	3.6	3.6	4.0	4.8	4.7	3.6	5.2	3.9	4.5	5.1	3.9	5.5	5.4				
6-year	2.4	2.8	2.8	2.6	3.8	3.4	3.3	3.9	4.4	4.7	3.4	4.5	3.6	4.2	4.7	3.8	5.0					
7-year	2.2	2.5	2.7	2.4	3.4	3.2	3.1	3.5	4.1	4.1	3.2	4.2	3.5	3.9	4.6	3.6						
8-year	2.0	2.4	2.5	2.3	3.4	2.8	2.6	3.5	3.8	3.9	3.2	3.7	3.2	3.8	4.4							
9-year	1.9	2.2	2.1	2.3	3.2	2.6	2.4	3.3	3.8	3.7	3.0	3.6	3.2	3.8								
10-year	1.8	2.1	2.0	2.3	3.2	2.4	2.3	3.0	3.6	3.6	2.8	3.5	3.1									
11-year	1.8	2.1	2.0	2.3	3.1	2.4	2.3	2.9	3.3	3.4	2.6	3.4										
12-year	1.8	2.0	1.9	2.3	3.1	2.4	2.3	2.9	3.3	3.2	2.5											
13-year	1.8	2.0	1.8	2.2	2.7	2.4	2.3	2.9	3.3	3.1												
14-year	1.7	2.0	1.8	2.2	2.7	2.4	2.3	2.8	3.3													
15-year	1.7	1.9	1.7	1.9	2.7	2.4	2.2	2.7														
16-year	1.7	1.9	1.7	1.8	2.7	2.4	1.9															
17-year	1.7	1.9	1.7	1.8	2.7	2.4																
18-year	1.6	1.9	1.6	1.8	2.7																	
19-year	1.6	1.9	1.5	1.8																		
20-year	1.5	1.9	1.5																			

^a Survival rates are relative rates expressed as percents.

^b Rates are from the SEER 9 areas (San Francisco, Connecticut, Detroit, Hawaii, Iowa, New Mexico, Seattle, Utah, and Atlanta).

Table XXII-7
PANCREAS CANCER (Invasive)

SURVIVAL RATES^a

By Year of Diagnosis

All Races, Males

Year of Diagnosis

	1975- 1979	1980- 1984	1985	1986	1987	1988	1989	1990	1991	1992	1993	1994	1995	1996	1997	1998	1999	2000	2001	2002	2003	2004
Relative Survival Rates (SEER ^b)																						
1-year	15.1	16.1	15.9	18.1	18.1	18.9	18.7	19.4	19.7	17.8	17.1	20.2	17.9	21.5	22.7	20.3	24.6	23.6	24.0	26.2	25.3	26.1
2-year	6.0	6.2	6.1	5.9	7.6	7.4	5.9	8.7	9.0	8.6	7.7	9.7	7.6	11.3	9.7	9.2	10.1	11.6	12.4	11.5	11.4	
3-year	3.5	3.9	4.8	3.9	5.4	5.0	3.7	5.4	6.6	5.4	4.7	7.6	4.4	7.6	6.6	5.8	6.5	7.1	7.8	8.3		
4-year	3.0	3.2	3.6	3.0	4.1	3.8	2.8	3.9	5.6	4.7	3.5	6.0	3.7	6.1	5.3	4.7	5.8	6.1	6.4			
5-year	2.6	2.7	2.6	2.3	4.1	3.7	2.6	3.5	5.0	4.1	2.7	5.6	3.2	5.4	4.4	4.1	5.3	5.2				
6-year	2.4	2.4	2.0	2.1	3.6	3.3	2.1	3.5	4.6	4.0	2.4	5.0	2.9	5.1	3.8	3.9	4.4					
7-year	2.3	2.1	2.0	1.8	3.1	3.2	2.1	3.3	4.1	3.3	2.1	4.7	2.9	4.7	3.4	3.7						
8-year	2.1	1.9	1.8	1.6	3.1	2.7	2.0	3.3	3.9	3.0	2.0	4.0	2.8	4.7	3.4							
9-year	2.0	1.8	1.5	1.6	3.0	2.5	1.5	3.0	3.9	2.9	1.9	3.9	2.6	4.6								
10-year	1.9	1.7	1.3	1.6	3.0	2.1	1.5	2.6	3.7	2.9	1.5	3.4	2.5									
11-year	1.9	1.7	1.3	1.6	3.0	2.0	1.5	2.5	3.6	2.9	1.2	3.4										
12-year	1.8	1.7	1.3	1.6	3.0	2.0	1.5	2.5	3.6	2.9	1.1											
13-year	1.8	1.7	1.3	1.6	2.4	2.0	1.5	2.5	3.6	2.7												
14-year	1.8	1.7	1.3	1.5	2.4	2.0	1.5	2.5	3.6													
15-year	1.8	1.6	1.3	0.9	2.4	2.0	1.5	2.5														
16-year	1.8	1.6	1.3	0.7	2.4	2.0	1.5															
17-year	1.8	1.6	1.3	0.7	2.4	2.0																
18-year	1.7	1.6	1.3	0.7	2.4																	
19-year	1.6	1.6	1.3	0.7																		
20-year	1.6	1.6	1.3																			

^a Survival rates are relative rates expressed as percents.

^b Rates are from the SEER 9 areas (San Francisco, Connecticut, Detroit, Hawaii, Iowa, New Mexico, Seattle, Utah, and Atlanta).

Table XXII-8
PANCREAS CANCER (Invasive)

SURVIVAL RATES^a

By Year of Diagnosis

All Races, Females

Year of Diagnosis

	1975- 1979	1980- 1984	1985	1986	1987	1988	1989	1990	1991	1992	1993	1994	1995	1996	1997	1998	1999	2000	2001	2002	2003	2004
Relative Survival Rates (SEER ^b)																						
1-year	15.2	18.3	16.6	18.3	19.4	17.7	21.1	19.6	20.5	22.7	19.4	19.4	19.5	18.7	20.3	21.4	22.9	23.5	25.8	26.4	22.6	22.1
2-year	6.3	7.0	6.7	7.1	8.4	6.5	9.8	8.2	9.6	9.4	9.2	9.0	9.6	8.5	10.4	8.7	11.5	10.7	11.0	12.8	11.4	
3-year	3.9	4.6	5.4	5.1	6.1	4.3	6.1	5.7	6.3	6.4	5.8	5.8	6.7	5.8	7.6	5.9	7.4	8.0	7.0	8.7		
4-year	3.1	3.8	4.4	3.8	5.3	3.5	5.2	4.7	5.2	5.6	5.2	5.0	4.8	4.2	6.0	4.4	6.1	6.7	5.9			
5-year	2.5	3.4	4.0	3.4	4.2	3.4	4.5	4.5	4.5	5.2	4.3	4.8	4.6	3.6	5.7	3.7	5.6	5.5				
6-year	2.3	3.1	3.4	3.2	3.9	3.4	4.3	4.2	4.2	5.2	4.3	4.0	4.2	3.3	5.5	3.7	5.6					
7-year	2.1	3.0	3.3	3.0	3.6	3.2	3.9	3.8	4.1	4.8	4.1	3.6	4.0	3.1	5.5	3.4						
8-year	1.9	2.8	3.0	2.9	3.6	2.9	3.1	3.7	3.8	4.8	4.1	3.4	3.5	3.0	5.4							
9-year	1.8	2.7	2.7	2.9	3.4	2.6	3.1	3.5	3.7	4.4	4.0	3.2	3.5	2.9								
11-year	1.8	2.5	2.7	2.9	3.4	2.6	3.1	3.3	3.6	4.1	4.0	3.2	3.5									
10-year	1.8	2.3	2.7	2.9	3.1	2.6	3.0	3.3	3.0	3.6	3.9	3.2										
12-year	1.8	2.3	2.3	2.9	3.1	2.6	3.0	3.3	2.9	3.3	3.8											
13-year	1.7	2.2	2.1	2.8	3.0	2.6	2.8	3.0	2.9	3.3												
14-year	1.6	2.2	2.1	2.8	2.9	2.6	2.8	2.9	2.9													
15-year	1.4	2.1	2.0	2.8	2.9	2.6	2.7	2.7														
16-year	1.4	2.0	1.9	2.7	2.8	2.6	2.1															
17-year	1.4	2.0	1.9	2.7	2.8	2.6																
18-year	1.4	2.0	1.9	2.7	2.8																	
19-year	1.4	2.0	1.5	2.7																		
20-year	1.4	2.0	1.5																			

^a Survival rates are relative rates expressed as percents.

^b Rates are from the SEER 9 areas (San Francisco, Connecticut, Detroit, Hawaii, Iowa, New Mexico, Seattle, Utah, and Atlanta).

Table XXII-9
PANCREAS CANCER (Invasive)

Risk of Being Diagnosed With Cancer in 10, 20 and 30 Years, Lifetime Risk of Being Diagnosed with Cancer, and
 Lifetime Risk of Dying from Cancer Given Cancer Free At Current Age
 Both Sexes, 2003-2005 By Race/Ethnicity

Race/ Ethnicity	Current Age	Risk of Being Diagnosed with Cancer			Risk of Dying from Cancer	
		+10 yrs Percent (95% C.I.)	+20 yrs Percent (95% C.I.)	+30 yrs Percent (95% C.I.)	Eventually Percent (95% C.I.)	Eventually Percent (95% C.I.)
All Races	0	0.00 (0.00, 0.00)	0.00 (0.00, 0.00)	0.00 (0.00, 0.00)	1.33 (1.31, 1.35)	1.22 (1.22, 1.23)
	10	0.00 (0.00, 0.00)	0.00 (0.00, 0.00)	0.01 (0.01, 0.01)	1.35 (1.33, 1.36)	1.24 (1.23, 1.25)
	20	0.00 (0.00, 0.00)	0.01 (0.01, 0.01)	0.05 (0.05, 0.05)	1.35 (1.33, 1.37)	1.25 (1.24, 1.25)
	30	0.01 (0.01, 0.01)	0.05 (0.04, 0.05)	0.18 (0.18, 0.18)	1.36 (1.35, 1.38)	1.26 (1.25, 1.27)
	40	0.04 (0.04, 0.04)	0.17 (0.17, 0.18)	0.48 (0.47, 0.49)	1.37 (1.35, 1.39)	1.27 (1.26, 1.28)
	50	0.14 (0.14, 0.14)	0.45 (0.44, 0.46)	0.91 (0.89, 0.92)	1.37 (1.35, 1.39)	1.28 (1.27, 1.28)
	60	0.33 (0.33, 0.34)	0.82 (0.81, 0.83)	1.20 (1.18, 1.22)	1.31 (1.29, 1.33)	1.23 (1.22, 1.24)
	70	0.56 (0.55, 0.57)	1.00 (0.98, 1.01)	- (- , -)	1.13 (1.11, 1.14)	1.09 (1.08, 1.10)
80	0.62 (0.61, 0.63)	- (- , -)	- (- , -)	0.80 (0.78, 0.82)	0.82 (0.81, 0.83)	
White	0	0.00 (0.00, 0.00)	0.00 (0.00, 0.00)	0.00 (0.00, 0.00)	1.32 (1.30, 1.34)	1.22 (1.21, 1.23)
	10	0.00 (0.00, 0.00)	0.00 (0.00, 0.00)	0.01 (0.01, 0.01)	1.34 (1.32, 1.36)	1.24 (1.23, 1.24)
	20	0.00 (0.00, 0.00)	0.01 (0.01, 0.01)	0.05 (0.04, 0.05)	1.34 (1.32, 1.36)	1.24 (1.23, 1.25)
	30	0.01 (0.01, 0.01)	0.04 (0.04, 0.05)	0.18 (0.17, 0.18)	1.35 (1.33, 1.37)	1.25 (1.24, 1.26)
	40	0.04 (0.04, 0.04)	0.17 (0.17, 0.18)	0.47 (0.46, 0.48)	1.36 (1.34, 1.38)	1.26 (1.25, 1.27)
	50	0.14 (0.13, 0.14)	0.45 (0.44, 0.46)	0.91 (0.89, 0.92)	1.36 (1.34, 1.38)	1.27 (1.26, 1.28)
	60	0.33 (0.32, 0.34)	0.82 (0.80, 0.83)	1.19 (1.17, 1.21)	1.30 (1.28, 1.32)	1.22 (1.21, 1.23)
	70	0.56 (0.55, 0.57)	0.99 (0.97, 1.01)	- (- , -)	1.11 (1.09, 1.13)	1.08 (1.07, 1.09)
80	0.61 (0.59, 0.63)	- (- , -)	- (- , -)	0.78 (0.76, 0.80)	0.81 (0.80, 0.82)	
Black	0	0.00 (0.00, 0.00)	0.00 (0.00, 0.00)	0.00 (0.00, 0.00)	1.39 (1.34, 1.45)	1.28 (1.26, 1.31)
	10	0.00 (0.00, 0.00)	0.00 (0.00, 0.00)	0.01 (0.01, 0.01)	1.43 (1.37, 1.49)	1.32 (1.29, 1.34)
	20	0.00 (0.00, 0.00)	0.01 (0.01, 0.01)	0.06 (0.06, 0.07)	1.44 (1.38, 1.50)	1.32 (1.30, 1.35)
	30	0.01 (0.01, 0.01)	0.06 (0.06, 0.07)	0.25 (0.23, 0.26)	1.46 (1.40, 1.52)	1.34 (1.32, 1.37)
	40	0.06 (0.05, 0.06)	0.24 (0.23, 0.26)	0.62 (0.59, 0.66)	1.49 (1.43, 1.55)	1.37 (1.34, 1.40)
	50	0.20 (0.18, 0.21)	0.60 (0.57, 0.63)	1.07 (1.02, 1.12)	1.51 (1.45, 1.57)	1.39 (1.37, 1.42)
	60	0.45 (0.42, 0.48)	0.98 (0.93, 1.03)	1.35 (1.29, 1.42)	1.47 (1.41, 1.54)	1.37 (1.34, 1.40)
	70	0.67 (0.63, 0.71)	1.14 (1.07, 1.20)	- (- , -)	1.28 (1.21, 1.36)	1.23 (1.20, 1.27)
80	0.75 (0.69, 0.82)	- (- , -)	- (- , -)	0.98 (0.90, 1.07)	0.96 (0.92, 1.00)	

Devcan Version 7.0.0, April 2008, National Cancer Institute (<http://srab.cancer.gov/devcan/>).

Source: Incidence data are from the SEER 17 areas (San Francisco, Connecticut, Detroit, Hawaii, Iowa, New Mexico, Seattle, Utah, Atlanta, San Jose-Monterey, Los Angeles, Alaska Native Registry, Rural Georgia, California excluding SF/SJM/LA, Kentucky, Louisiana and New Jersey). Mortality data are from the NCHS public use data file for the total US.

- Statistic could not be calculated.

A percent or confidence interval value of 0.00 represents a value that is below 0.005.

Table XXII-9 - continued
PANCREAS CANCER (Invasive)

Risk of Being Diagnosed With Cancer in 10, 20 and 30 Years, Lifetime Risk of Being Diagnosed with Cancer, and
 Lifetime Risk of Dying from Cancer Given Cancer Free At Current Age
 Both Sexes, 2003-2005 By Race/Ethnicity

Race/ Ethnicity	Current Age	Risk of Being Diagnosed with Cancer				Risk of Dying from Cancer	
		+10 yrs Percent (95% C.I.)	+20 yrs Percent (95% C.I.)	+30 yrs Percent (95% C.I.)	Eventually Percent (95% C.I.)	Eventually Percent (95% C.I.)	
Asian/ Pacific Islander	0	0.00 (0.00, 0.00)	0.00 (0.00, 0.00)	0.00 (0.00, 0.00)	1.39 (1.30, 1.48)	1.26 (1.18, 1.34)	
	10	0.00 (0.00, 0.00)	0.00 (0.00, 0.00)	0.01 (0.01, 0.01)	1.40 (1.31, 1.50)	1.27 (1.19, 1.35)	
	20	0.00 (0.00, 0.00)	0.01 (0.01, 0.01)	0.04 (0.03, 0.04)	1.40 (1.32, 1.50)	1.27 (1.20, 1.36)	
	30	0.01 (0.01, 0.01)	0.04 (0.03, 0.04)	0.13 (0.12, 0.15)	1.41 (1.32, 1.51)	1.28 (1.20, 1.36)	
	40	0.03 (0.02, 0.03)	0.13 (0.11, 0.14)	0.36 (0.33, 0.38)	1.41 (1.32, 1.51)	1.28 (1.20, 1.36)	
	50	0.10 (0.09, 0.11)	0.33 (0.31, 0.36)	0.72 (0.68, 0.77)	1.40 (1.31, 1.50)	1.28 (1.20, 1.36)	
	60	0.24 (0.22, 0.27)	0.65 (0.60, 0.69)	1.12 (1.05, 1.19)	1.34 (1.25, 1.45)	1.23 (1.15, 1.32)	
	70	0.44 (0.40, 0.47)	0.95 (0.88, 1.02)	- (- , -)	1.20 (1.10, 1.30)	1.13 (1.05, 1.22)	
80	0.63 (0.57, 0.70)	- (- , -)	- (- , -)	0.94 (0.83, 1.06)	0.92 (0.83, 1.03)		
American Indian/ Alaska Native ^a	0	0.00 (0.00, 0.02)	0.00 (0.00, 0.03)	0.00 (0.00, 0.03)	1.06 (0.84, 1.43)	0.88 (0.75, 1.05)	
	10	0.00 (0.00, 0.01)	0.00 (0.00, 0.02)	0.01 (0.00, 0.04)	1.08 (0.86, 1.46)	0.89 (0.76, 1.07)	
	20	0.00 (0.00, 0.01)	0.01 (0.00, 0.03)	0.05 (0.03, 0.09)	1.09 (0.86, 1.47)	0.90 (0.77, 1.08)	
	30	0.01 (0.00, 0.03)	0.05 (0.03, 0.09)	0.14 (0.10, 0.20)	1.10 (0.88, 1.49)	0.92 (0.78, 1.10)	
	40	0.04 (0.02, 0.07)	0.13 (0.09, 0.19)	0.41 (0.31, 0.53)	1.12 (0.89, 1.52)	0.94 (0.80, 1.13)	
	50	0.09 (0.06, 0.14)	0.38 (0.28, 0.51)	0.80 (0.63, 1.01)	1.12 (0.88, 1.54)	0.97 (0.82, 1.16)	
	60	0.31 (0.22, 0.43)	0.76 (0.58, 0.97)	1.04 (0.81, 1.33)	1.11 (0.86, 1.55)	0.95 (0.79, 1.16)	
	70	0.52 (0.37, 0.73)	0.85 (0.62, 1.15)	- (- , -)	0.93 (0.67, 1.43)	0.83 (0.65, 1.07)	
80	0.46 (0.26, 0.76)	- (- , -)	- (- , -)	0.57 (0.32, 1.21)	0.61 (0.40, 0.93)		
Hispanic ^b	0	0.00 (0.00, 0.00)	0.00 (0.00, 0.00)	0.00 (0.00, 0.00)	1.45 (1.37, 1.53)	1.19 (1.15, 1.24)	
	10	0.00 (0.00, 0.00)	0.00 (0.00, 0.00)	0.01 (0.01, 0.01)	1.46 (1.38, 1.55)	1.21 (1.16, 1.25)	
	20	0.00 (0.00, 0.00)	0.01 (0.01, 0.01)	0.04 (0.03, 0.04)	1.47 (1.39, 1.56)	1.21 (1.17, 1.26)	
	30	0.01 (0.01, 0.01)	0.04 (0.03, 0.04)	0.15 (0.14, 0.16)	1.48 (1.40, 1.57)	1.22 (1.18, 1.27)	
	40	0.03 (0.03, 0.03)	0.15 (0.13, 0.16)	0.45 (0.43, 0.48)	1.49 (1.41, 1.58)	1.23 (1.18, 1.28)	
	50	0.12 (0.11, 0.13)	0.43 (0.40, 0.46)	0.88 (0.84, 0.93)	1.49 (1.41, 1.58)	1.23 (1.19, 1.28)	
	60	0.33 (0.31, 0.35)	0.80 (0.76, 0.85)	1.22 (1.15, 1.28)	1.44 (1.36, 1.54)	1.21 (1.16, 1.26)	
	70	0.53 (0.49, 0.57)	0.99 (0.93, 1.05)	- (- , -)	1.24 (1.15, 1.34)	1.08 (1.03, 1.13)	
80	0.60 (0.55, 0.66)	- (- , -)	- (- , -)	0.94 (0.83, 1.05)	0.85 (0.79, 0.91)		

Devcan Version 7.0.0, April 2008, National Cancer Institute (<http://srab.cancer.gov/devcan/>).

Source: Incidence data are from the SEER 17 areas (San Francisco, Connecticut, Detroit, Hawaii, Iowa, New Mexico, Seattle, Utah, Atlanta, San Jose-Monterey, Los Angeles, Alaska Native Registry, Rural Georgia, California excluding SF/SJM/LA, Kentucky, Louisiana and New Jersey). Mortality data are from the NCHS public use data file for the total US.

^a Underlying incidence and mortality data for American Indian/Alaska Native are based on the CHSDA (Contract Health Service Delivery Area) counties.

^b Hispanic is not mutually exclusive from whites, blacks, Asian/Pacific Islanders, and American Indians/Alaska Natives. Underlying incidence data for Hispanics are based on NHIA and exclude cases from the Alaska Native Registry and Kentucky. Underlying mortality data for Hispanics exclude deaths from Minnesota, New Hampshire and North Dakota.

- Statistic could not be calculated.

A percent or confidence interval value of 0.00 represents a value that is below 0.005.

Table XXII-9 - continued
PANCREAS CANCER (Invasive)

Risk of Being Diagnosed With Cancer in 10, 20 and 30 Years, Lifetime Risk of Being Diagnosed with Cancer, and
 Lifetime Risk of Dying from Cancer Given Cancer Free At Current Age
 Males, 2003-2005 By Race/Ethnicity

Race/ Ethnicity	Current Age	Risk of Being Diagnosed with Cancer				Risk of Dying from Cancer	
		+10 yrs Percent (95% C.I.)	+20 yrs Percent (95% C.I.)	+30 yrs Percent (95% C.I.)	Eventually Percent (95% C.I.)	Eventually Percent (95% C.I.)	
All Races	0	0.00 (0.00, 0.00)	0.00 (0.00, 0.00)	0.00 (0.00, 0.00)	1.32 (1.29, 1.34)	1.23 (1.21, 1.24)	
	10	0.00 (0.00, 0.00)	0.00 (0.00, 0.00)	0.01 (0.01, 0.01)	1.34 (1.31, 1.36)	1.24 (1.23, 1.26)	
	20	0.00 (0.00, 0.00)	0.01 (0.01, 0.01)	0.05 (0.05, 0.06)	1.34 (1.32, 1.37)	1.25 (1.24, 1.26)	
	30	0.01 (0.01, 0.01)	0.05 (0.05, 0.06)	0.21 (0.20, 0.21)	1.36 (1.34, 1.39)	1.27 (1.26, 1.28)	
	40	0.05 (0.04, 0.05)	0.20 (0.20, 0.21)	0.54 (0.53, 0.55)	1.38 (1.35, 1.40)	1.28 (1.27, 1.30)	
	50	0.16 (0.16, 0.17)	0.51 (0.50, 0.53)	0.99 (0.97, 1.01)	1.38 (1.35, 1.41)	1.29 (1.28, 1.31)	
	60	0.38 (0.37, 0.39)	0.89 (0.87, 0.91)	1.23 (1.21, 1.26)	1.31 (1.29, 1.34)	1.25 (1.23, 1.26)	
	70	0.61 (0.59, 0.63)	1.02 (0.99, 1.04)	- (- , -)	1.11 (1.08, 1.14)	1.08 (1.07, 1.10)	
80	0.62 (0.59, 0.64)	- (- , -)	- (- , -)	0.76 (0.73, 0.79)	0.79 (0.78, 0.81)		
White	0	0.00 (0.00, 0.00)	0.00 (0.00, 0.00)	0.00 (0.00, 0.00)	1.32 (1.30, 1.35)	1.23 (1.22, 1.25)	
	10	0.00 (0.00, 0.00)	0.00 (0.00, 0.00)	0.01 (0.01, 0.01)	1.34 (1.31, 1.37)	1.25 (1.24, 1.26)	
	20	0.00 (0.00, 0.00)	0.01 (0.01, 0.01)	0.05 (0.05, 0.06)	1.34 (1.32, 1.37)	1.26 (1.25, 1.27)	
	30	0.01 (0.01, 0.01)	0.05 (0.05, 0.05)	0.20 (0.19, 0.21)	1.36 (1.33, 1.39)	1.27 (1.26, 1.29)	
	40	0.04 (0.04, 0.05)	0.20 (0.19, 0.20)	0.54 (0.52, 0.55)	1.37 (1.35, 1.40)	1.29 (1.28, 1.30)	
	50	0.16 (0.15, 0.17)	0.51 (0.50, 0.53)	0.99 (0.97, 1.02)	1.38 (1.35, 1.41)	1.30 (1.28, 1.31)	
	60	0.38 (0.37, 0.39)	0.90 (0.88, 0.92)	1.24 (1.21, 1.27)	1.31 (1.28, 1.34)	1.25 (1.23, 1.26)	
	70	0.62 (0.60, 0.63)	1.02 (0.99, 1.04)	- (- , -)	1.10 (1.07, 1.13)	1.08 (1.07, 1.09)	
80	0.61 (0.59, 0.64)	- (- , -)	- (- , -)	0.74 (0.71, 0.78)	0.79 (0.77, 0.80)		
Black	0	0.00 (0.00, 0.00)	0.00 (0.00, 0.00)	0.00 (0.00, 0.00)	1.26 (1.19, 1.35)	1.20 (1.16, 1.23)	
	10	0.00 (0.00, 0.00)	0.00 (0.00, 0.00)	0.01 (0.01, 0.02)	1.30 (1.22, 1.38)	1.23 (1.20, 1.27)	
	20	0.00 (0.00, 0.00)	0.01 (0.01, 0.02)	0.07 (0.06, 0.08)	1.31 (1.23, 1.39)	1.24 (1.20, 1.28)	
	30	0.01 (0.01, 0.01)	0.07 (0.06, 0.08)	0.29 (0.26, 0.32)	1.34 (1.26, 1.43)	1.27 (1.23, 1.30)	
	40	0.06 (0.05, 0.07)	0.29 (0.26, 0.31)	0.68 (0.63, 0.73)	1.38 (1.29, 1.47)	1.30 (1.26, 1.34)	
	50	0.24 (0.22, 0.27)	0.66 (0.61, 0.71)	1.10 (1.03, 1.18)	1.40 (1.32, 1.50)	1.32 (1.28, 1.36)	
	60	0.49 (0.44, 0.54)	1.00 (0.93, 1.08)	1.27 (1.18, 1.36)	1.35 (1.26, 1.46)	1.28 (1.24, 1.33)	
	70	0.69 (0.62, 0.76)	1.05 (0.96, 1.15)	- (- , -)	1.15 (1.05, 1.27)	1.13 (1.08, 1.18)	
80	0.65 (0.56, 0.76)	- (- , -)	- (- , -)	0.85 (0.72, 1.00)	0.83 (0.77, 0.90)		

Devcan Version 7.0.0, April 2008, National Cancer Institute (<http://srab.cancer.gov/devcan/>).

Source: Incidence data are from the SEER 17 areas (San Francisco, Connecticut, Detroit, Hawaii, Iowa, New Mexico, Seattle, Utah, Atlanta, San Jose-Monterey, Los Angeles, Alaska Native Registry, Rural Georgia, California excluding SF/SJM/LA, Kentucky, Louisiana and New Jersey). Mortality data are from the NCHS public use data file for the total US.

- Statistic could not be calculated.

A percent or confidence interval value of 0.00 represents a value that is below 0.005.

Table XXII-9 - continued
PANCREAS CANCER (Invasive)

Risk of Being Diagnosed With Cancer in 10, 20 and 30 Years, Lifetime Risk of Being Diagnosed with Cancer, and
 Lifetime Risk of Dying from Cancer Given Cancer Free At Current Age
 Males, 2003-2005 By Race/Ethnicity

Race/ Ethnicity	Current Age	Risk of Being Diagnosed with Cancer				Risk of Dying from Cancer	
		+10 yrs Percent (95% C.I.)	+20 yrs Percent (95% C.I.)	+30 yrs Percent (95% C.I.)	Eventually Percent (95% C.I.)	Eventually Percent (95% C.I.)	
Asian/ Pacific Islander	0	0.00 (0.00, 0.00)	0.00 (0.00, 0.00)	0.00 (0.00, 0.00)	1.40 (1.28, 1.54)	1.21 (1.11, 1.33)	
	10	0.00 (0.00, 0.00)	0.00 (0.00, 0.00)	0.01 (0.01, 0.01)	1.41 (1.29, 1.56)	1.22 (1.12, 1.34)	
	20	0.00 (0.00, 0.00)	0.01 (0.01, 0.01)	0.05 (0.04, 0.06)	1.42 (1.30, 1.56)	1.23 (1.13, 1.35)	
	30	0.01 (0.01, 0.01)	0.05 (0.04, 0.06)	0.16 (0.14, 0.18)	1.43 (1.31, 1.57)	1.23 (1.13, 1.35)	
	40	0.04 (0.03, 0.05)	0.15 (0.13, 0.17)	0.39 (0.36, 0.44)	1.43 (1.31, 1.57)	1.24 (1.14, 1.36)	
	50	0.11 (0.10, 0.13)	0.36 (0.33, 0.40)	0.80 (0.74, 0.87)	1.42 (1.29, 1.56)	1.23 (1.13, 1.35)	
	60	0.26 (0.23, 0.30)	0.72 (0.65, 0.79)	1.17 (1.07, 1.27)	1.36 (1.23, 1.51)	1.19 (1.08, 1.31)	
	70	0.51 (0.45, 0.57)	1.00 (0.91, 1.11)	- (- , -)	1.22 (1.09, 1.38)	1.09 (0.98, 1.22)	
	80	0.65 (0.56, 0.75)	- (- , -)	- (- , -)	0.93 (0.78, 1.12)	0.87 (0.74, 1.03)	
American Indian/ Alaska Native ^a	0	0.00 (0.00, 0.05)	0.00 (0.00, 0.05)	0.00 (0.00, 0.05)	1.13 (0.81, 1.86)	0.96 (0.76, 1.27)	
	10	0.00 (0.00, 0.02)	0.00 (0.00, 0.02)	0.02 (0.00, 0.05)	1.16 (0.83, 1.90)	0.98 (0.77, 1.30)	
	20	0.00 (0.00, 0.02)	0.02 (0.00, 0.05)	0.06 (0.03, 0.12)	1.17 (0.84, 1.92)	1.00 (0.78, 1.32)	
	30	0.02 (0.00, 0.05)	0.06 (0.03, 0.12)	0.18 (0.11, 0.28)	1.20 (0.86, 1.97)	1.02 (0.80, 1.35)	
	40	0.05 (0.02, 0.10)	0.17 (0.10, 0.27)	0.54 (0.38, 0.75)	1.22 (0.87, 2.02)	1.06 (0.83, 1.40)	
	50	0.13 (0.07, 0.22)	0.52 (0.35, 0.73)	0.92 (0.66, 1.26)	1.24 (0.87, 2.08)	1.09 (0.85, 1.46)	
	60	0.42 (0.27, 0.64)	0.87 (0.60, 1.23)	1.13 (0.78, 1.61)	1.22 (0.83, 2.14)	1.09 (0.83, 1.49)	
	70	0.53 (0.31, 0.87)	0.84 (0.50, 1.36)	- (- , -)	0.95 (0.56, 2.03)	0.97 (0.67, 1.46)	
	80	0.46 (0.16, 1.07)	- (- , -)	- (- , -)	0.62 (0.22, 2.20)	0.84 (0.45, 1.57)	
Hispanic ^b	0	0.00 (0.00, 0.00)	0.00 (0.00, 0.00)	0.00 (0.00, 0.00)	1.28 (1.19, 1.40)	1.14 (1.08, 1.20)	
	10	0.00 (0.00, 0.00)	0.00 (0.00, 0.00)	0.01 (0.01, 0.01)	1.30 (1.20, 1.42)	1.15 (1.09, 1.22)	
	20	0.00 (0.00, 0.00)	0.01 (0.01, 0.01)	0.04 (0.03, 0.05)	1.31 (1.21, 1.43)	1.16 (1.10, 1.23)	
	30	0.01 (0.01, 0.01)	0.04 (0.03, 0.05)	0.15 (0.14, 0.17)	1.32 (1.22, 1.44)	1.17 (1.11, 1.24)	
	40	0.03 (0.03, 0.04)	0.15 (0.13, 0.16)	0.46 (0.43, 0.50)	1.33 (1.23, 1.45)	1.18 (1.12, 1.25)	
	50	0.12 (0.11, 0.13)	0.44 (0.41, 0.48)	0.90 (0.84, 0.97)	1.34 (1.24, 1.46)	1.19 (1.13, 1.26)	
	60	0.35 (0.31, 0.38)	0.83 (0.77, 0.90)	1.19 (1.10, 1.28)	1.30 (1.19, 1.43)	1.16 (1.09, 1.24)	
	70	0.56 (0.50, 0.62)	0.97 (0.88, 1.06)	- (- , -)	1.09 (0.98, 1.24)	1.01 (0.94, 1.09)	
	80	0.57 (0.48, 0.66)	- (- , -)	- (- , -)	0.75 (0.62, 0.92)	0.76 (0.67, 0.86)	

Devcan Version 7.0.0, April 2008, National Cancer Institute (<http://srab.cancer.gov/devcan/>).

Source: Incidence data are from the SEER 17 areas (San Francisco, Connecticut, Detroit, Hawaii, Iowa, New Mexico, Seattle, Utah, Atlanta, San Jose-Monterey, Los Angeles, Alaska Native Registry, Rural Georgia, California excluding SF/SJM/LA, Kentucky, Louisiana and New Jersey). Mortality data are from the NCHS public use data file for the total US.

^a Underlying incidence and mortality data for American Indian/Alaska Native are based on the CHSDA (Contract Health Service Delivery Area) counties.

^b Hispanic is not mutually exclusive from whites, blacks, Asian/Pacific Islanders, and American Indians/Alaska Natives. Underlying incidence data for Hispanics are based on NHIA and exclude cases from the Alaska Native Registry and Kentucky. Underlying mortality data for Hispanics exclude deaths from Minnesota, New Hampshire and North Dakota.

- Statistic could not be calculated.

A percent or confidence interval value of 0.00 represents a value that is below 0.005.

Table XXII-9 - continued
PANCREAS CANCER (Invasive)

Risk of Being Diagnosed With Cancer in 10, 20 and 30 Years, Lifetime Risk of Being Diagnosed with Cancer, and
 Lifetime Risk of Dying from Cancer Given Cancer Free At Current Age
 Females, 2003-2005 By Race/Ethnicity

Race/ Ethnicity	Current Age	Risk of Being Diagnosed with Cancer			Risk of Dying from Cancer	
		+10 yrs Percent (95% C.I.)	+20 yrs Percent (95% C.I.)	+30 yrs Percent (95% C.I.)	Eventually Percent (95% C.I.)	Eventually Percent (95% C.I.)
All Races	0	0.00 (0.00, 0.00)	0.00 (0.00, 0.00)	0.00 (0.00, 0.00)	1.34 (1.31, 1.36)	1.22 (1.21, 1.23)
	10	0.00 (0.00, 0.00)	0.00 (0.00, 0.00)	0.01 (0.01, 0.01)	1.35 (1.33, 1.38)	1.23 (1.22, 1.25)
	20	0.00 (0.00, 0.00)	0.01 (0.01, 0.01)	0.04 (0.04, 0.04)	1.36 (1.33, 1.38)	1.24 (1.23, 1.25)
	30	0.01 (0.01, 0.01)	0.04 (0.04, 0.04)	0.15 (0.15, 0.16)	1.36 (1.34, 1.39)	1.24 (1.23, 1.25)
	40	0.03 (0.03, 0.03)	0.15 (0.14, 0.15)	0.42 (0.41, 0.43)	1.37 (1.34, 1.39)	1.25 (1.24, 1.26)
	50	0.12 (0.11, 0.12)	0.40 (0.39, 0.41)	0.83 (0.82, 0.85)	1.36 (1.34, 1.39)	1.25 (1.24, 1.27)
	60	0.29 (0.28, 0.30)	0.75 (0.74, 0.77)	1.17 (1.14, 1.19)	1.30 (1.28, 1.33)	1.22 (1.21, 1.23)
	70	0.51 (0.50, 0.53)	0.98 (0.96, 1.00)	- (- , -)	1.13 (1.11, 1.16)	1.09 (1.08, 1.11)
80	0.62 (0.60, 0.64)	- (- , -)	- (- , -)	0.83 (0.80, 0.85)	0.83 (0.82, 0.85)	
White	0	0.00 (0.00, 0.00)	0.00 (0.00, 0.00)	0.00 (0.00, 0.00)	1.32 (1.29, 1.35)	1.21 (1.19, 1.22)
	10	0.00 (0.00, 0.00)	0.00 (0.00, 0.00)	0.01 (0.01, 0.01)	1.33 (1.31, 1.36)	1.22 (1.21, 1.23)
	20	0.00 (0.00, 0.00)	0.01 (0.01, 0.01)	0.04 (0.04, 0.04)	1.34 (1.31, 1.36)	1.22 (1.21, 1.23)
	30	0.01 (0.01, 0.01)	0.04 (0.03, 0.04)	0.15 (0.14, 0.16)	1.34 (1.31, 1.37)	1.23 (1.22, 1.24)
	40	0.03 (0.03, 0.03)	0.14 (0.14, 0.15)	0.41 (0.40, 0.42)	1.34 (1.32, 1.37)	1.23 (1.22, 1.25)
	50	0.11 (0.11, 0.12)	0.39 (0.38, 0.40)	0.83 (0.81, 0.85)	1.34 (1.31, 1.37)	1.24 (1.22, 1.25)
	60	0.29 (0.28, 0.30)	0.74 (0.72, 0.76)	1.15 (1.12, 1.17)	1.28 (1.25, 1.31)	1.20 (1.19, 1.21)
	70	0.51 (0.50, 0.53)	0.97 (0.94, 0.99)	- (- , -)	1.11 (1.08, 1.14)	1.07 (1.06, 1.09)
80	0.61 (0.59, 0.63)	- (- , -)	- (- , -)	0.80 (0.78, 0.83)	0.82 (0.80, 0.83)	
Black	0	0.00 (0.00, 0.00)	0.00 (0.00, 0.00)	0.00 (0.00, 0.00)	1.51 (1.43, 1.60)	1.36 (1.33, 1.40)
	10	0.00 (0.00, 0.00)	0.00 (0.00, 0.00)	0.01 (0.01, 0.01)	1.55 (1.46, 1.63)	1.39 (1.36, 1.43)
	20	0.00 (0.00, 0.00)	0.01 (0.01, 0.01)	0.06 (0.05, 0.07)	1.55 (1.47, 1.64)	1.40 (1.36, 1.43)
	30	0.01 (0.00, 0.01)	0.06 (0.05, 0.07)	0.21 (0.19, 0.23)	1.56 (1.48, 1.65)	1.41 (1.37, 1.44)
	40	0.05 (0.04, 0.06)	0.21 (0.19, 0.23)	0.57 (0.53, 0.62)	1.58 (1.50, 1.67)	1.43 (1.39, 1.47)
	50	0.16 (0.14, 0.18)	0.54 (0.50, 0.58)	1.04 (0.98, 1.11)	1.60 (1.51, 1.69)	1.45 (1.41, 1.49)
	60	0.42 (0.38, 0.46)	0.97 (0.90, 1.03)	1.42 (1.34, 1.51)	1.57 (1.48, 1.67)	1.43 (1.39, 1.47)
	70	0.66 (0.60, 0.72)	1.20 (1.11, 1.29)	- (- , -)	1.38 (1.28, 1.48)	1.30 (1.26, 1.35)
80	0.80 (0.72, 0.89)	- (- , -)	- (- , -)	1.07 (0.96, 1.18)	1.03 (0.98, 1.08)	

Devcan Version 7.0.0, April 2008, National Cancer Institute (<http://srab.cancer.gov/devcan/>).

Source: Incidence data are from the SEER 17 areas (San Francisco, Connecticut, Detroit, Hawaii, Iowa, New Mexico, Seattle, Utah, Atlanta, San Jose-Monterey, Los Angeles, Alaska Native Registry, Rural Georgia, California excluding SF/SJM/LA, Kentucky, Louisiana and New Jersey). Mortality data are from the NCHS public use data file for the total US.

- Statistic could not be calculated.

A percent or confidence interval value of 0.00 represents a value that is below 0.005.

Table XXII-9 - continued
 PANCREAS CANCER (Invasive)

Risk of Being Diagnosed With Cancer in 10, 20 and 30 Years, Lifetime Risk of Being Diagnosed with Cancer, and
 Lifetime Risk of Dying from Cancer Given Cancer Free At Current Age
 Females, 2003-2005 By Race/Ethnicity

Race/ Ethnicity	Current Age	Risk of Being Diagnosed with Cancer				Risk of Dying from Cancer	
		+10 yrs Percent (95% C.I.)	+20 yrs Percent (95% C.I.)	+30 yrs Percent (95% C.I.)	Eventually Percent (95% C.I.)	Eventually Percent (95% C.I.)	
Asian/ Pacific Islander	0	0.00 (0.00, 0.00)	0.00 (0.00, 0.00)	0.00 (0.00, 0.01)	1.37 (1.25, 1.52)	1.30 (1.19, 1.43)	
	10	0.00 (0.00, 0.00)	0.00 (0.00, 0.01)	0.01 (0.00, 0.01)	1.38 (1.26, 1.53)	1.31 (1.20, 1.44)	
	20	0.00 (0.00, 0.00)	0.01 (0.00, 0.01)	0.03 (0.02, 0.04)	1.39 (1.26, 1.53)	1.31 (1.20, 1.44)	
	30	0.01 (0.00, 0.01)	0.03 (0.02, 0.04)	0.11 (0.10, 0.13)	1.39 (1.27, 1.53)	1.31 (1.20, 1.44)	
	40	0.02 (0.02, 0.03)	0.11 (0.09, 0.12)	0.32 (0.29, 0.36)	1.39 (1.26, 1.53)	1.32 (1.20, 1.45)	
	50	0.09 (0.07, 0.10)	0.31 (0.27, 0.34)	0.66 (0.60, 0.72)	1.38 (1.26, 1.53)	1.32 (1.20, 1.45)	
	60	0.23 (0.20, 0.26)	0.59 (0.53, 0.64)	1.08 (0.99, 1.17)	1.33 (1.20, 1.48)	1.27 (1.16, 1.41)	
	70	0.38 (0.34, 0.43)	0.91 (0.82, 1.00)	- (- , -)	1.17 (1.05, 1.33)	1.16 (1.04, 1.30)	
80	0.62 (0.54, 0.71)	- (- , -)	- (- , -)	0.94 (0.80, 1.11)	0.96 (0.83, 1.12)		
American Indian/ Alaska Native ^a	0	0.00 (0.00, 0.05)	0.00 (0.00, 0.05)	0.01 (0.00, 0.05)	1.00 (0.71, 1.61)	0.81 (0.64, 1.06)	
	10	0.00 (0.00, 0.03)	0.01 (0.00, 0.03)	0.01 (0.00, 0.05)	1.02 (0.72, 1.63)	0.83 (0.65, 1.07)	
	20	0.00 (0.00, 0.02)	0.01 (0.00, 0.04)	0.05 (0.02, 0.10)	1.02 (0.72, 1.64)	0.83 (0.66, 1.08)	
	30	0.01 (0.00, 0.04)	0.05 (0.02, 0.10)	0.10 (0.06, 0.18)	1.03 (0.73, 1.65)	0.84 (0.66, 1.09)	
	40	0.04 (0.01, 0.08)	0.10 (0.05, 0.17)	0.29 (0.18, 0.44)	1.04 (0.73, 1.67)	0.85 (0.67, 1.11)	
	50	0.06 (0.03, 0.13)	0.26 (0.16, 0.41)	0.69 (0.47, 0.97)	1.03 (0.72, 1.69)	0.87 (0.68, 1.13)	
	60	0.21 (0.12, 0.35)	0.66 (0.44, 0.95)	0.97 (0.67, 1.38)	1.03 (0.70, 1.71)	0.84 (0.65, 1.13)	
	70	0.52 (0.32, 0.80)	0.87 (0.56, 1.30)	- (- , -)	0.94 (0.60, 1.71)	0.74 (0.53, 1.06)	
80	0.47 (0.22, 0.90)	- (- , -)	- (- , -)	0.56 (0.26, 1.52)	0.48 (0.26, 0.88)		
Hispanic ^b	0	0.00 (0.00, 0.00)	0.00 (0.00, 0.00)	0.00 (0.00, 0.00)	1.58 (1.47, 1.71)	1.24 (1.18, 1.30)	
	10	0.00 (0.00, 0.00)	0.00 (0.00, 0.00)	0.01 (0.00, 0.01)	1.60 (1.48, 1.73)	1.25 (1.19, 1.32)	
	20	0.00 (0.00, 0.00)	0.01 (0.00, 0.01)	0.04 (0.03, 0.04)	1.60 (1.49, 1.73)	1.25 (1.19, 1.32)	
	30	0.01 (0.00, 0.01)	0.03 (0.03, 0.04)	0.15 (0.13, 0.16)	1.61 (1.49, 1.74)	1.26 (1.20, 1.33)	
	40	0.03 (0.02, 0.03)	0.14 (0.13, 0.16)	0.44 (0.41, 0.48)	1.61 (1.49, 1.74)	1.26 (1.20, 1.33)	
	50	0.12 (0.10, 0.13)	0.42 (0.38, 0.45)	0.87 (0.81, 0.93)	1.60 (1.49, 1.74)	1.26 (1.20, 1.33)	
	60	0.31 (0.28, 0.35)	0.78 (0.72, 0.84)	1.24 (1.15, 1.33)	1.54 (1.42, 1.68)	1.24 (1.17, 1.31)	
	70	0.51 (0.46, 0.55)	1.01 (0.93, 1.09)	- (- , -)	1.34 (1.21, 1.48)	1.12 (1.05, 1.20)	
80	0.63 (0.55, 0.71)	- (- , -)	- (- , -)	1.04 (0.90, 1.21)	0.90 (0.83, 0.99)		

Devcan Version 7.0.0, April 2008, National Cancer Institute (<http://srab.cancer.gov/devcan/>).

Source: Incidence data are from the SEER 17 areas (San Francisco, Connecticut, Detroit, Hawaii, Iowa, New Mexico, Seattle, Utah, Atlanta, San Jose-Monterey, Los Angeles, Alaska Native Registry, Rural Georgia, California excluding SF/SJM/LA, Kentucky, Louisiana and New Jersey). Mortality data are from the NCHS public use data file for the total US.

^a Underlying incidence and mortality data for American Indian/Alaska Native are based on the CHSDA (Contract Health Service Delivery Area) counties.

^b Hispanic is not mutually exclusive from whites, blacks, Asian/Pacific Islanders, and American Indians/Alaska Natives. Underlying incidence data for Hispanics are based on NHIA and exclude cases from the Alaska Native Registry and Kentucky. Underlying mortality data for Hispanics exclude deaths from Minnesota, New Hampshire and North Dakota.

- Statistic could not be calculated.

A percent or confidence interval value of 0.00 represents a value that is below 0.005.

Table XXII-10
PANCREAS CANCER (Invasive)

SEER INCIDENCE AND U.S. MORTALITY
AGE-ADJUSTED RATES AND TRENDS^a
 By Race/Ethnicity and Sex

<u>SEER Incidence</u>	Rate 2001-2005 ^b			Seer 13 Areas ^c Trend 1996-2005 AAPC (%)			SEER 9 Areas ^d Trend 1996-2005 AAPC (%)		
	Rate per 100,000 persons			Total	Males	Females	Total	Males	Females
	Total	Males	Females	Total	Males	Females	Total	Males	Females
<u>RACE/ETHNICITY</u>									
All Races	11.5	13.0	10.3	0.2	0.0	0.2	0.4*	0.3	-0.1
White	11.4	13.0	10.0	0.4*	0.3*	0.3*	0.5*	0.6*	0.2
White Hispanic ^e	10.8	11.2	10.5	-0.2	-0.3	-0.2	-	-	-
White Non-Hispanic ^e	11.5	13.3	10.1	0.5*	0.4*	0.4*	-	-	-
Black	15.2	16.2	14.3	-0.3	-1.3*	-0.7	-0.3*	-0.7*	0.0
Asian/Pacific Islander	9.0	10.1	8.2	-0.1	-0.9	-0.2	-	-	-
Amer Ind/Alaska Nat ^f	9.3	10.9	8.2	-	-	-	-	-	-
Hispanic ^e	10.6	10.9	10.3	-0.1	-0.2	-0.1	-	-	-
<u>U.S. Mortality^g</u>									
	Rate 2001-2005			Trend 1996-2005 ^h					
	Rate per 100,000 persons			AAPC (%)					
	Total	Males	Females	Total	Males	Females			
<u>RACE/ETHNICITY</u>									
All Races	10.6	12.2	9.3	0.4	0.1	0.0			
White	10.4	12.1	9.0	0.5*	0.2*	0.2*			
White Hispanic ^e	8.6	9.4	7.9	0.5	-0.4	0.4			
White Non-Hispanic ^e	10.5	12.3	9.1	0.5*	0.5*	0.2*			
Black	13.7	15.4	12.4	-0.9*	-1.2*	-0.7*			
Asian/Pacific Islander	7.4	8.0	6.9	-0.3	-1.1*	0.6			
Amer Ind/Alaska Nat									
Total U.S.	6.6	7.0	6.2	0.9	2.6*	0.0			
CHSDA Counties	7.8	8.6	7.2	1.8	3.7*	0.7			
Non-CHSDA Counties	5.0	5.1	4.9	-0.2	-	-			
Hispanic ^e	8.3	9.1	7.6	0.5	-0.4	0.4			

The AAPC is the Average Annual Percent Change over the time interval. The AAPCs are calculated by the Joinpoint Regression Program Version 3.3, April 2008, National Cancer Institute.

Statistic not shown. Rate based on less than 16 cases for the time interval. Trend based on less than 10 cases for at least one year within the time interval.

Rates are age-adjusted to the 2000 US Std Population (19 age groups - Census P25-1130). Trends are based on rates age-adjusted to the 2000 US Std Population (19 age groups - Census P25-1130).

Incidence data used in calculating the 2001-2005 rates are from the SEER 17 areas (San Francisco, Connecticut, Detroit, Hawaii, Iowa, New Mexico, Seattle, Utah, Atlanta, San Jose-Monterey, Los Angeles, Alaska Native Registry, Rural Georgia, California excluding SF/SJM/LA, Kentucky, Louisiana and New Jersey).

The SEER 13 areas are San Francisco, Connecticut, Detroit, Hawaii, Iowa, New Mexico, Seattle, Utah, Atlanta, San Jose-Monterey, Los Angeles, Alaska Native Registry and Rural Georgia. The 1996-2005 AAPC trends are based on a Joinpoint analysis using diagnosis years 1992-2005.

The SEER 9 areas are San Francisco, Connecticut, Detroit, Hawaii, Iowa, New Mexico, Seattle, Utah, and Atlanta. The 1996-2005 AAPC trends are based on a Joinpoint analysis using diagnosis years 1975-2005.

Hispanic and Non-Hispanic are not mutually exclusive from whites, blacks, Asian/Pacific Islanders, and American Indians/Alaska Natives. Incidence data for Hispanics and Non-Hispanics are based on NHIA and exclude cases from the Alaska Native Registry and Kentucky. The 2001-2005 Hispanic and Non-Hispanic death rates exclude deaths from Minnesota, New Hampshire and North Dakota. The 1996-2005 Hispanic and Non-Hispanic mortality trends exclude deaths from Connecticut, Maine, Maryland, Minnesota, New Hampshire, New York, North Dakota, Oklahoma and Vermont.

Incidence data for American Indian/Alaska Native are based on the CHSDA(Contract Health Service Delivery Area) counties.

US Mortality Files, National Center for Health Statistics, CDC.

The 1996-2005 mortality AAPCs are based on a Joinpoint analysis using years of death 1992-2005.

The APC is significantly different from zero (p<.05).

Table XXII-11
PANCREAS CANCER (Invasive)

AGE-ADJUSTED SEER INCIDENCE RATES^a
 By Registry, Race and Sex

	<u>All Races</u>			<u>Whites</u>			<u>Blacks</u>		
	<u>Total</u>	<u>Males</u>	<u>Females</u>	<u>Total</u>	<u>Males</u>	<u>Females</u>	<u>Total</u>	<u>Males</u>	<u>Females</u>
<u>SEER INCIDENCE RATES^a, 2001-2005</u>									
<u>REGISTRY</u>									
Atlanta & Rural Georgia	10.5	12.3	9.2	9.7	11.7	8.3	12.9	13.8	11.9
Atlanta	10.4	12.4	8.9	9.6	11.6	8.1	12.7	14.4	11.4
Rural Georgia	13.5	11.8	14.0	12.7	12.5	11.8	15.5	-	18.4
California	11.0	12.3	10.0	11.1	12.5	10.0	15.3	15.1	14.9
Greater Bay Area	10.9	11.9	9.9	11.2	12.5	10.1	15.1	13.5	15.8
San Francisco-Oakland	10.9	11.9	10.0	11.1	12.5	9.9	15.2	13.2	16.3
San Jose-Monterey	10.9	11.9	9.9	11.3	12.4	10.3	15.6	16.3	-
Los Angeles	10.8	11.8	10.0	10.9	11.9	10.0	14.8	14.9	14.3
Greater California	11.2	12.6	9.9	11.2	12.8	9.9	16.1	16.6	15.2
Connecticut	12.8	15.0	11.1	12.5	14.7	10.8	17.8	21.7	15.2
Detroit	13.6	15.6	11.8	12.9	15.1	10.9	16.6	18.5	15.3
Hawaii	11.8	12.9	10.8	10.7	11.7	10.2	-	-	-
Iowa	11.1	12.7	9.8	11.0	12.6	9.6	26.4	21.5	29.6
Kentucky	10.9	12.6	9.6	10.7	12.4	9.4	14.2	17.0	12.2
Louisiana	13.0	14.7	11.6	11.9	13.6	10.5	16.4	18.4	14.9
New Jersey	12.2	13.9	10.8	12.2	14.1	10.7	13.5	13.8	13.1
New Mexico	10.3	11.3	9.5	10.5	11.5	9.6	-	-	-
Seattle-Puget Sound	11.6	13.1	10.4	11.5	13.0	10.2	18.9	20.4	18.4
Utah	9.5	11.2	8.1	9.6	11.3	8.1	-	-	-
9 SEER Areas ^b	11.6	13.1	10.3	11.3	13.0	9.9	15.6	16.7	14.6
11 SEER Areas ^b	11.4	12.8	10.2	11.2	12.7	10.0	15.4	16.2	14.5
13 SEER Areas ^b	11.4	12.8	10.2	11.2	12.8	10.0	15.4	16.1	14.6
17 SEER Areas ^b	11.5	13.0	10.3	11.4	13.0	10.0	15.2	16.2	14.3

^a Rates are per 100,000 and are age-adjusted to the 2000 US Std Population (19 age groups - Census P25-1130)

^b The SEER 9 areas are San Francisco, Connecticut, Detroit, Hawaii, Iowa, New Mexico, Seattle, Utah and Atlanta.

The SEER 11 areas comprise the SEER 9 areas plus San Jose-Monterey and Los Angeles.

The SEER 13 areas comprise the SEER 11 areas plus the Alaska Native Registry and Rural Georgia.

The SEER 17 areas comprise the SEER 13 areas plus California excluding SF/SJM/LA, Kentucky, Louisiana and New Jersey.

- Statistic not shown. Rate based on less than 16 cases for the time interval.

Table XXII-12
PANCREAS CANCER (Invasive)

AGE-ADJUSTED SEER DEATH RATES^a
 By Registry, Race and Sex

	<u>All Races</u>			<u>Whites</u>			<u>Blacks</u>		
	<u>Total</u>	<u>Males</u>	<u>Females</u>	<u>Total</u>	<u>Males</u>	<u>Females</u>	<u>Total</u>	<u>Males</u>	<u>Females</u>
<u>SEER DEATH RATES^a, 2001-2005</u>									
REGISTRY									
Atlanta & Rural Georgia	10.0	11.9	8.5	8.9	11.0	7.4	12.9	14.4	11.5
Atlanta	9.9	12.1	8.3	8.8	11.1	7.2	13.0	14.8	11.4
Rural Georgia	11.2	9.8	11.5	10.7	9.3	10.7	12.9	-	13.3
California	10.3	11.6	9.2	10.5	11.9	9.3	14.4	14.4	14.0
Greater Bay Area	10.0	10.9	9.3	10.5	11.6	9.4	14.9	13.3	15.6
San Francisco-Oakland	9.9	10.6	9.3	10.3	11.3	9.3	15.1	12.8	16.3
San Jose-Monterey	10.2	11.4	9.2	10.8	12.2	9.6	14.2	16.5	-
Los Angeles	10.3	11.2	9.5	10.4	11.4	9.5	13.6	14.3	12.8
Greater California	10.4	12.0	9.1	10.5	12.3	9.1	15.0	15.3	14.6
Connecticut	11.4	13.3	9.9	11.2	13.1	9.7	15.7	18.8	13.7
Detroit	11.6	13.5	9.9	11.1	13.0	9.5	13.8	16.3	12.0
Hawaii	10.7	11.9	9.6	10.5	12.5	8.8	-	-	-
Iowa	10.4	11.5	9.4	10.2	11.4	9.3	24.0	23.1	24.0
Kentucky	10.4	12.0	9.1	10.2	11.8	8.9	14.2	16.5	12.6
Louisiana	12.1	13.8	10.7	11.3	13.1	9.7	15.1	16.6	13.8
New Jersey	11.1	12.5	10.0	11.2	12.7	9.9	12.7	13.5	12.1
New Mexico	10.0	11.2	8.9	10.2	11.4	9.2	-	-	-
Seattle-Puget Sound	10.7	12.1	9.5	10.7	12.2	9.5	15.9	17.3	15.0
Utah	8.9	10.9	7.3	9.0	11.0	7.3	-	-	-
9 SEER Areas ^b	10.5	12.0	9.3	10.4	11.9	9.1	14.2	15.6	13.0
11 SEER Areas ^b	10.4	11.8	9.3	10.4	11.8	9.2	14.0	15.3	12.9
13 SEER Areas ^b	10.4	11.8	9.3	10.4	11.8	9.2	14.0	15.2	12.9
17 SEER Areas ^b	10.6	12.1	9.4	10.6	12.1	9.3	14.1	15.2	13.0
Total U.S.	10.6	12.2	9.3	10.4	12.1	9.0	13.7	15.4	12.4

^a US Mortality Files, National Center for Health Statistics, Centers for Disease Control and Prevention. Rates are per 100,000 and are age-adjusted to the 2000 US Std Population (19 age groups - Census P25-1130).

^b The SEER 9 areas are San Francisco, Connecticut, Detroit, Hawaii, Iowa, New Mexico, Seattle, Utah and Atlanta.
 The SEER 11 areas comprise the SEER 9 areas plus San Jose-Monterey and Los Angeles.

The SEER 13 areas comprise the SEER 11 areas plus the Alaska Native Registry and Rural Georgia.

The SEER 17 areas comprise the SEER 13 areas plus California excluding SF/SJM/LA, Kentucky, Louisiana and New Jersey.

- Statistic not shown. Rate based on less than 16 cases for the time interval.

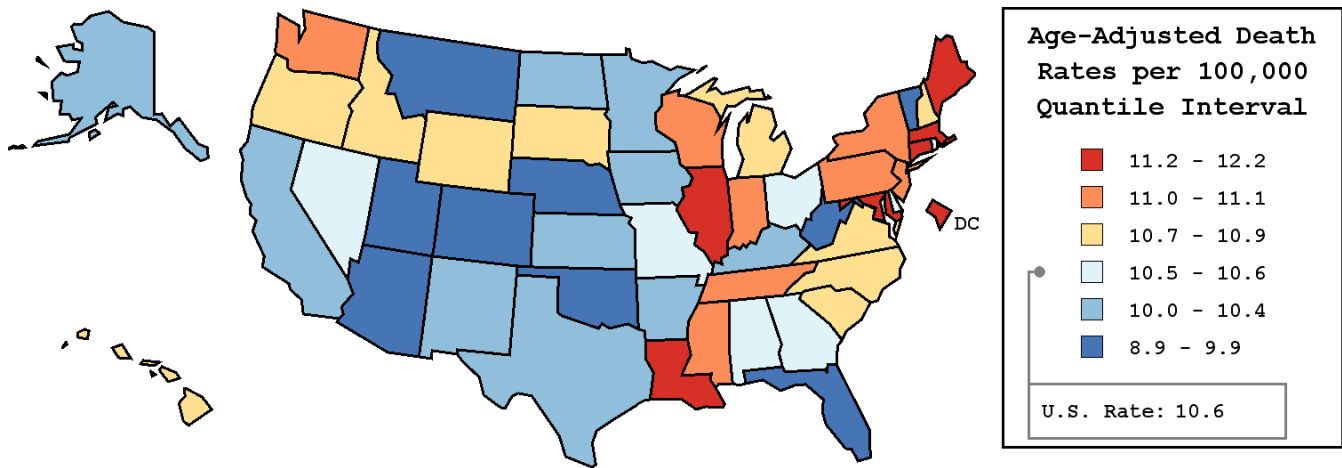
Table XXII-13
PANCREAS CANCER (Invasive)

AVERAGE ANNUAL AGE-ADJUSTED CANCER DEATH^a RATES BY STATE, ALL RACES, 2001-2005

Males and Females

State	Rate	SE	Rank	PD
TOTAL U.S.	10.6	0.03		
High Five States				
D.C.	12.2	0.65	(01)	15.1 ^c
Louisiana	12.1 ^b	0.24	(02)	14.2
Maine	11.5	0.39	(03)	8.5
Massachusetts	11.4 ^b	0.18	(04)	7.5
Connecticut	11.4	0.24	(05)	7.5
Low Five States				
Arizona	9.3 ^b	0.18	(47)	-12.3
Nebraska	9.3 ^b	0.32	(48)	-12.3
West Virginia	9.1 ^b	0.29	(49)	-14.2
Vermont	9.1	0.52	(50)	-14.2
Utah	8.9 ^b	0.32	(51)	-16.0 ^c

State	Rate	SE	Rank	PD	State	Rate	SE	Rank	PD
Alabama	10.6	0.21	(30)	0.0	Montana	9.9	0.44	(45)	-6.6
Alaska	10.4	0.79	(37)	-1.9	Nebraska	9.3 ^b	0.32	(48)	-12.3
Arizona	9.3 ^b	0.18	(47)	-12.3	Nevada	10.6	0.32	(28)	0.0
Arkansas	10.4	0.26	(34)	-1.9	New Hampshire	10.9	0.41	(16)	2.8
California	10.3 ^b	0.08	(38)	-2.8	New Jersey	11.1	0.16	(08)	4.7
Colorado	9.9	0.23	(46)	-6.6	New Mexico	10.0	0.33	(42)	-5.7
Connecticut	11.4	0.24	(05)	7.5	New York	11.0 ^b	0.10	(11)	3.8
Delaware	10.5	0.50	(31)	-0.9	North Carolina	10.8	0.16	(20)	1.9
D.C.	12.2	0.65	(01)	15.1 ^c	North Dakota	10.1	0.53	(40)	-4.7
Florida	9.9 ^b	0.10	(43)	-6.6	Ohio	10.6	0.13	(27)	0.0
Georgia	10.5	0.17	(32)	-0.9	Oklahoma	9.9	0.23	(44)	-6.6
Hawaii	10.7	0.40	(25)	0.9	Oregon	10.9	0.24	(17)	2.8
Idaho	10.7	0.41	(23)	0.9	Pennsylvania	11.0	0.12	(15)	3.8
Illinois	11.3 ^b	0.14	(07)	6.6	Rhode Island	10.6	0.42	(29)	0.0
Indiana	11.0	0.19	(12)	3.8	South Carolina	10.8	0.23	(21)	1.9
Iowa	10.4	0.25	(36)	-1.9	South Dakota	10.9	0.51	(18)	2.8
Kansas	10.4	0.27	(35)	-1.9	Tennessee	11.0	0.19	(14)	3.8
Kentucky	10.4	0.22	(33)	-1.9	Texas	10.1 ^b	0.11	(41)	-4.7
Louisiana	12.1 ^b	0.24	(02)	14.2	Utah	8.9 ^b	0.32	(51)	-16.0 ^c
Maine	11.5	0.39	(03)	8.5	Vermont	9.1	0.52	(50)	-14.2
Maryland	11.4 ^b	0.21	(06)	7.5	Virginia	10.7	0.18	(22)	0.9
Massachusetts	11.4 ^b	0.18	(04)	7.5	Washington	11.0	0.19	(13)	3.8
Michigan	10.8	0.15	(19)	1.9	West Virginia	9.1 ^b	0.29	(49)	-14.2
Minnesota	10.2	0.20	(39)	-3.8	Wisconsin	11.1	0.20	(10)	4.7
Mississippi	11.1	0.28	(09)	4.7	Wyoming	10.7	0.66	(24)	0.9
Missouri	10.6	0.19	(26)	0.0					



^a US Mortality Files, National Center for Health Statistics, Centers for Disease Control and Prevention. Rates are per 100,000 and are age-adjusted to the 2000 US Std Population (19 age groups - Census P25-1130).
^b Difference between state rate and total U.S. rate is statistically significant ($p \leq .0002$).
^c Absolute percent difference between state rate and total U.S. rate is 15% or more.
SE Standard error of the rate.
PD Percent difference between state rate and total U.S. rate.

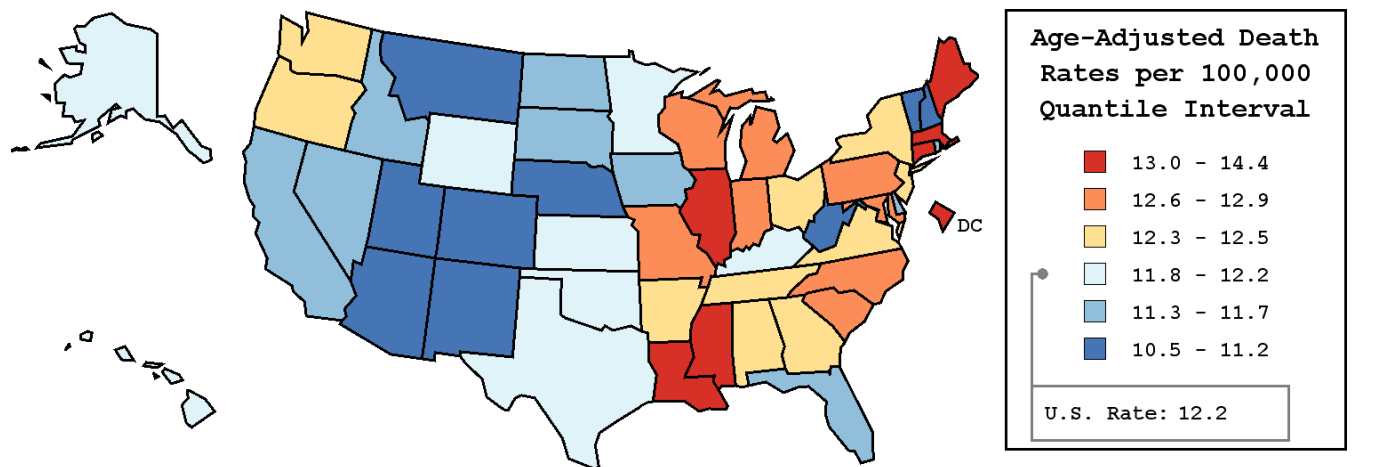
Table XXII-14
PANCREAS CANCER (Invasive)

AVERAGE ANNUAL AGE-ADJUSTED CANCER DEATH^a RATES BY STATE, ALL RACES, 2001-2005

Males

State	Rate	SE	Rank	PD
TOTAL U.S.	12.2	0.04		
High Five States				
D.C.	14.4	1.14	(01)	18.0 ^c
Louisiana	13.8 ^b	0.40	(02)	13.1 ^c
Maine	13.7	0.66	(03)	12.3 ^c
Connecticut	13.3	0.41	(04)	9.0
Massachusetts	13.3 ^b	0.31	(05)	9.0
Low Five States				
Colorado	11.0	0.37	(47)	-9.8
West Virginia	10.9	0.49	(48)	-10.7 ^c
Utah	10.9	0.54	(49)	-10.7 ^c
Arizona	10.8 ^b	0.29	(50)	-11.5 ^c
Vermont	10.5	0.87	(51)	-13.9 ^c

State	Rate	SE	Rank	PD	State	Rate	SE	Rank	PD
Alabama	12.4	0.36	(19)	1.6	Montana	11.1	0.70	(46)	-9.0
Alaska	12.2	1.33	(27)	0.0	Nebraska	11.2	0.54	(44)	-8.2
Arizona	10.8 ^b	0.29	(50)	-11.5 ^c	Nevada	11.7	0.51	(34)	-4.1
Arkansas	12.3	0.44	(23)	0.8	New Hampshire	11.2	0.65	(43)	-8.2
California	11.6 ^b	0.13	(38)	-4.9	New Jersey	12.5	0.26	(16)	2.5
Colorado	11.0	0.37	(47)	-9.8	New Mexico	11.2	0.53	(45)	-8.2
Connecticut	13.3	0.41	(04)	9.0	New York	12.4	0.17	(20)	1.6
Delaware	11.5	0.79	(40)	-5.7	North Carolina	12.8	0.28	(10)	4.9
D.C.	14.4	1.14	(01)	18.0 ^c	North Dakota	11.7	0.86	(35)	-4.1
Florida	11.6 ^b	0.16	(36)	-4.9	Ohio	12.3	0.22	(24)	0.8
Georgia	12.5	0.30	(18)	2.5	Oklahoma	12.0	0.39	(30)	-1.6
Hawaii	11.9	0.63	(31)	-2.5	Oregon	12.3	0.39	(25)	0.8
Idaho	11.4	0.63	(42)	-6.6	Pennsylvania	12.8	0.20	(11)	4.9
Illinois	13.1 ^b	0.23	(06)	7.4	Rhode Island	11.6	0.69	(37)	-4.9
Indiana	12.9	0.32	(08)	5.7	South Carolina	12.7	0.39	(13)	4.1
Iowa	11.5	0.40	(39)	-5.7	South Dakota	11.4	0.78	(41)	-6.6
Kansas	12.2	0.45	(26)	0.0	Tennessee	12.5	0.32	(17)	2.5
Kentucky	12.0	0.37	(29)	-1.6	Texas	11.8	0.18	(32)	-3.3
Louisiana	13.8 ^b	0.40	(02)	13.1 ^c	Utah	10.9	0.54	(49)	-10.7 ^c
Maine	13.7	0.66	(03)	12.3 ^c	Vermont	10.5	0.87	(51)	-13.9 ^c
Maryland	12.9	0.35	(09)	5.7	Virginia	12.4	0.30	(21)	1.6
Massachusetts	13.3 ^b	0.31	(05)	9.0	Washington	12.4	0.31	(22)	1.6
Michigan	12.7	0.24	(12)	4.1	West Virginia	10.9	0.49	(48)	-10.7 ^c
Minnesota	11.8	0.33	(33)	-3.3	Wisconsin	12.6	0.32	(14)	3.3
Mississippi	13.1	0.48	(07)	7.4	Wyoming	12.1	1.06	(28)	-0.8
Missouri	12.6	0.31	(15)	3.3					



^a US Mortality Files, National Center for Health Statistics, Centers for Disease Control and Prevention. Rates are per 100,000 and are age-adjusted to the 2000 US Std Population (19 age groups - Census P25-1130).
^b Difference between state rate and total U.S. rate is statistically significant ($p \leq .0002$).
^c Absolute percent difference between state rate and total U.S. rate is 10% or more.
SE Standard error of the rate.
PD Percent difference between state rate and total U.S. rate.

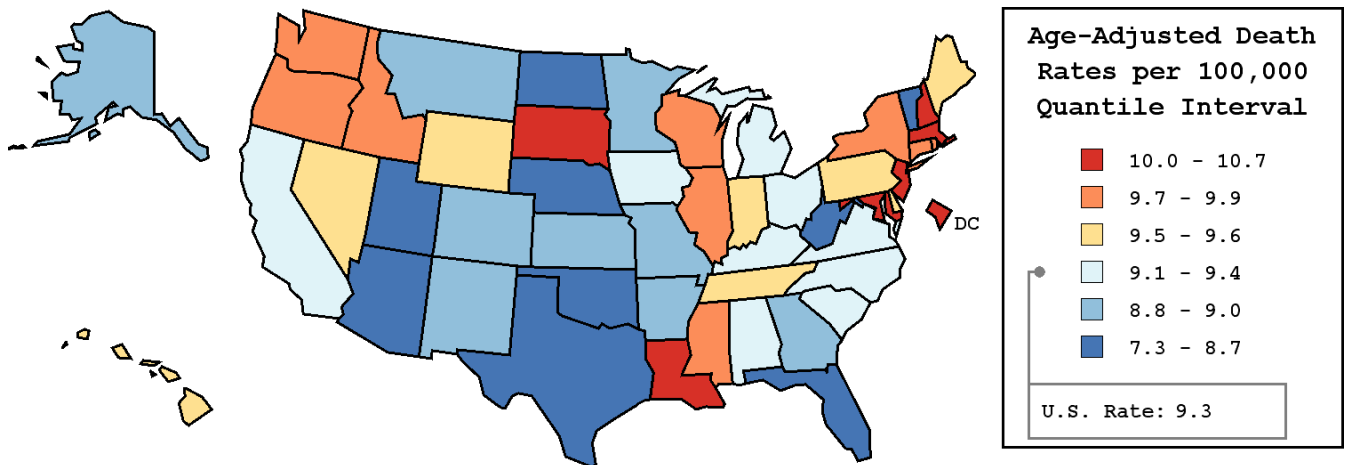
Table XXII-15
PANCREAS CANCER (Invasive)

AVERAGE ANNUAL AGE-ADJUSTED CANCER DEATH^a RATES BY STATE, ALL RACES, 2001-2005

Females

State	Rate	SE	Rank	PD
TOTAL U.S.	9.3	0.03		
High Five States				
Louisiana	10.7 ^b	0.29	(01)	15.1 ^c
New Hampshire	10.7	0.54	(02)	15.1 ^c
D.C.	10.6	0.78	(03)	14.0
South Dakota	10.4	0.67	(04)	11.8
Maryland	10.2 ^b	0.26	(05)	9.7
Low Five States				
Vermont	8.0	0.66	(47)	-14.0
Arizona	8.0 ^b	0.23	(48)	-14.0
Nebraska	7.9	0.39	(49)	-15.1 ^c
West Virginia	7.7 ^b	0.35	(50)	-17.2 ^c
Utah	7.3 ^b	0.40	(51)	-21.5 ^c

State	Rate	SE	Rank	PD	State	Rate	SE	Rank	PD
Alabama	9.1	0.26	(33)	-2.2	Montana	8.8	0.56	(42)	-5.4
Alaska	9.0	0.99	(35)	-3.2	Nebraska	7.9	0.39	(49)	-15.1 ^c
Arizona	8.0 ^b	0.23	(48)	-14.0	Nevada	9.5	0.42	(21)	2.2
Arkansas	9.0	0.32	(36)	-3.2	New Hampshire	10.7	0.54	(02)	15.1 ^c
California	9.2	0.10	(30)	-1.1	New Jersey	10.0 ^b	0.19	(06)	7.5
Colorado	8.9	0.29	(39)	-4.3	New Mexico	8.9	0.42	(41)	-4.3
Connecticut	9.9	0.30	(09)	6.5	New York	9.9 ^b	0.13	(10)	6.5
Delaware	9.5	0.62	(23)	2.2	North Carolina	9.2	0.20	(29)	-1.1
D.C.	10.6	0.78	(03)	14.0	North Dakota	8.7	0.66	(43)	-6.5
Florida	8.5 ^b	0.12	(45)	-8.6	Ohio	9.2	0.16	(31)	-1.1
Georgia	9.0	0.21	(34)	-3.2	Oklahoma	8.3 ^b	0.28	(46)	-10.8
Hawaii	9.6	0.50	(20)	3.2	Oregon	9.7	0.31	(16)	4.3
Idaho	9.9	0.53	(08)	6.5	Pennsylvania	9.5	0.15	(22)	2.2
Illinois	9.9 ^b	0.17	(11)	6.5	Rhode Island	9.8	0.53	(13)	5.4
Indiana	9.5	0.23	(24)	2.2	South Carolina	9.4	0.28	(25)	1.1
Iowa	9.4	0.32	(26)	1.1	South Dakota	10.4	0.67	(04)	11.8
Kansas	8.9	0.33	(40)	-4.3	Tennessee	9.6	0.24	(18)	3.2
Kentucky	9.1	0.28	(32)	-2.2	Texas	8.7 ^b	0.13	(44)	-6.5
Louisiana	10.7 ^b	0.29	(01)	15.1 ^c	Utah	7.3 ^b	0.40	(51)	-21.5 ^c
Maine	9.6	0.47	(17)	3.2	Vermont	8.0	0.66	(47)	-14.0
Maryland	10.2 ^b	0.26	(05)	9.7	Virginia	9.3	0.22	(27)	0.0
Massachusetts	10.0	0.22	(07)	7.5	Washington	9.8	0.25	(12)	5.4
Michigan	9.3	0.18	(28)	0.0	West Virginia	7.7 ^b	0.35	(50)	-17.2 ^c
Minnesota	9.0	0.25	(38)	-3.2	Wisconsin	9.8	0.24	(14)	5.4
Mississippi	9.7	0.34	(15)	4.3	Wyoming	9.6	0.85	(19)	3.2
Missouri	9.0	0.22	(37)	-3.2					



^a US Mortality Files, National Center for Health Statistics, Centers for Disease Control and Prevention. Rates are per 100,000 and are age-adjusted to the 2000 US Std Population (19 age groups - Census P25-1130).
^b Difference between state rate and total U.S. rate is statistically significant ($p \leq .0002$).
^c Absolute percent difference between state rate and total U.S. rate is 15% or more.
SE Standard error of the rate.
PD Percent difference between state rate and total U.S. rate.

Table XXII-16
PANCREAS CANCER (Invasive)

Estimated United States Cancer Prevalence Counts^a on January 1, 2005
 By Race/Ethnicity, Sex and Years Since Diagnosis

Years Since Diagnosis	0 to <5	5 to <10	10 to <15	15 to <20	20 to <25	25 to <30	0 to <15 ^e	0 to <30 ^e	>=30 ^g	Complete ^h
<u>Race/Sex</u>										
All Races ^b	21,905	3,471	1,875	930	569	276	27,250	29,026	419	29,445
Males	10,950	1,575	849	401	231	171	13,374	14,178	177	14,355
Females	10,955	1,896	1,026	529	338	105	13,876	14,848	242	15,090
White ^b	18,683	2,711	1,549	607	463	245	22,943	24,259	341	24,600
Males	9,623	1,333	710	282	202	140	11,666	12,290	158	12,448
Females	9,060	1,378	839	325	261	105	11,277	11,969	183	12,152
Black ^b	2,372	444	203	272	70	27	3,019	3,387	187	3,574
Males	962	114	75	116	13	27	1,151	1,307	70	1,377
Females	1,410	330	128	156	57	0	1,868	2,080	117	2,197
Asian/Pacific Islander ^c	679	160	52	+	+	+	892	+	+	+
Males	315	58	24	+	+	+	398	+	+	+
Females	364	102	28	+	+	+	494	+	+	+
Hispanic ^d	1,272	217	167	+	+	+	1,656	+	+	+
Males	629	63	76	+	+	+	769	+	+	+
Females	643	154	91	+	+	+	887	+	+	+

Estimated prevalence percent^a on January 1, 2005, of the SEER 11 population diagnosed in the previous 15 years
 By Age at Prevalence, Race/Ethnicity and Sex

Age at Prevalence	Age Specific (Crude)										Age-Adjusted ^f
	All Ages	0-9	10-19	20-29	30-39	40-49	50-59	60-69	70-79	80+	All Ages
<u>Race/Sex</u>											
All Races ^c	0.0085%	-	0.0002%	0.0004%	0.0013%	0.0051%	0.0142%	0.0295%	0.0448%	0.0426%	0.0089%
Males	0.0084%	-	-	0.0003%	0.0011%	0.0050%	0.0164%	0.0327%	0.0506%	0.0458%	0.0097%
Females	0.0085%	-	0.0003%	0.0006%	0.0016%	0.0053%	0.0121%	0.0266%	0.0404%	0.0409%	0.0082%
White ^c	0.0088%	-	0.0002%	0.0005%	0.0014%	0.0048%	0.0143%	0.0298%	0.0446%	0.0407%	0.0088%
Males	0.0090%	-	-	0.0003%	0.0010%	0.0050%	0.0170%	0.0339%	0.0517%	0.0445%	0.0099%
Females	0.0086%	-	0.0003%	0.0006%	0.0018%	0.0046%	0.0116%	0.0260%	0.0390%	0.0387%	0.0079%
Black ^c	0.0075%	-	-	-	0.0013%	0.0061%	0.0174%	0.0297%	0.0540%	0.0517%	0.0102%
Males	0.0061%	-	-	-	0.0015%	0.0050%	0.0193%	0.0297%	0.0431%	0.0247%	0.0088%
Females	0.0088%	-	-	-	-	0.0070%	0.0158%	0.0297%	0.0612%	0.0647%	0.0110%
Asian/Pacific Islander ^c	0.0076%	-	-	-	0.0009%	0.0058%	0.0107%	0.0271%	0.0380%	0.0527%	0.0083%
Males	0.0070%	-	-	-	-	0.0042%	0.0097%	0.0272%	0.0435%	0.0656%	0.0086%
Females	0.0081%	-	-	-	-	0.0073%	0.0116%	0.0271%	0.0341%	0.0442%	0.0081%
Hispanic ^d	0.0039%	-	-	0.0003%	0.0012%	0.0034%	0.0106%	0.0279%	0.0358%	0.0382%	0.0074%
Males	0.0035%	-	-	-	-	0.0029%	0.0108%	0.0306%	0.0414%	0.0410%	0.0080%
Females	0.0043%	-	-	-	0.0018%	0.0039%	0.0105%	0.0257%	0.0318%	0.0366%	0.0072%

^a US 2005 cancer prevalence counts are based on 2005 cancer prevalence proportions from the SEER registries and 1/1/2005 US population estimates based on the average of 2004 and 2005 population estimates from the US Bureau of the Census. Prevalence was calculated using the First Malignant Primary Only for a person.

^{b c d} Statistics based on (b) SEER 9 Areas (c) SEER 11 Areas and Rural Georgia (d) NHIA for Hispanic for SEER 11 Areas and Rural Georgia.

^e Maximum limited-duration prevalence: 30 years for 1975-2005 SEER 9 data; 15 years for 1990-2005 SEER 11 data (used to calculate prevalence for Hispanics and Asian Pacific Islanders).

^f Percentages are age-adjusted to the 2000 US Standard Population (19 age groups - Census P25-1130) by 5-year age groups.

^{g h} (g) Cases diagnosed more than 30 years ago were estimated using the completeness index method (Capocaccia et. al. 1997, Merrill et. al. 2000). (h) Complete prevalence is obtained by summing 0 to <30 and >=30.

- Statistic not shown. Statistic based on fewer than 5 cases estimated alive in SEER for the time interval.

+ Not available.

SEER Incidence, Delay Adjusted Incidence and US Death Rates^a Pancreas Cancer, by Race and Sex

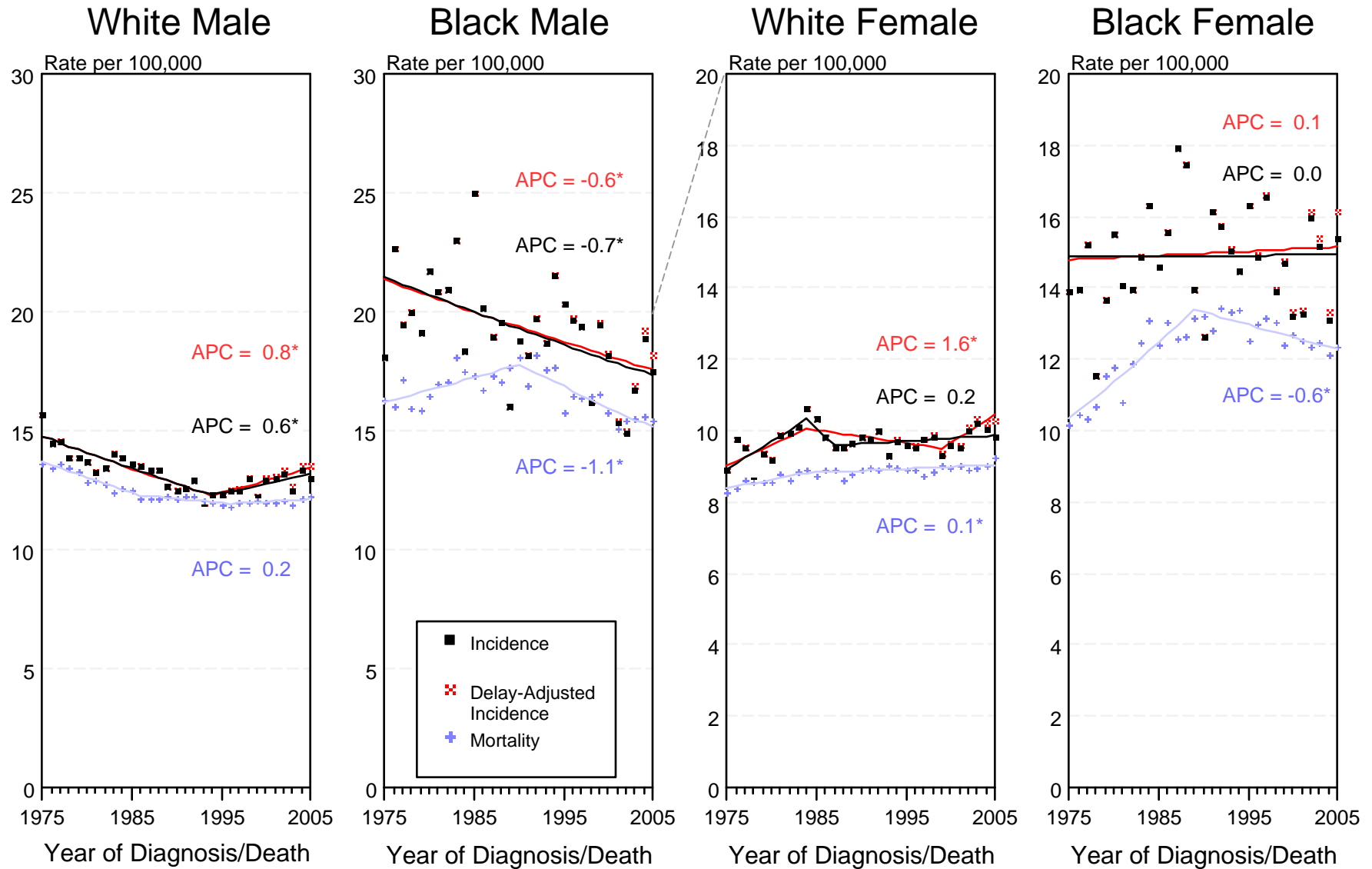


Figure XII-1

^a Source: SEER 9 areas and US Mortality Files (National Center for Health Statistics, CDC). Rates are age-adjusted to the 2000 US Std Population (19 age groups - Census P25-1103). Regression lines and APCs are calculated using the Joinpoint Regression Program Version 3.3.1, April 2008, National Cancer Institute. The APC is the Annual Percent Change for the regression line segments. The APC shown on the graph is for the most recent trend.
* The APC is significantly different from zero ($p < 0.05$).

SEER Incidence and US Death Rates^a Pancreas Cancer, Both Sexes

Joinpoint Analyses for Whites and Blacks from 1975-2005
and for Asian/Pacific Islanders, American Indians/Alaska Natives and Hispanics from 1992-2005

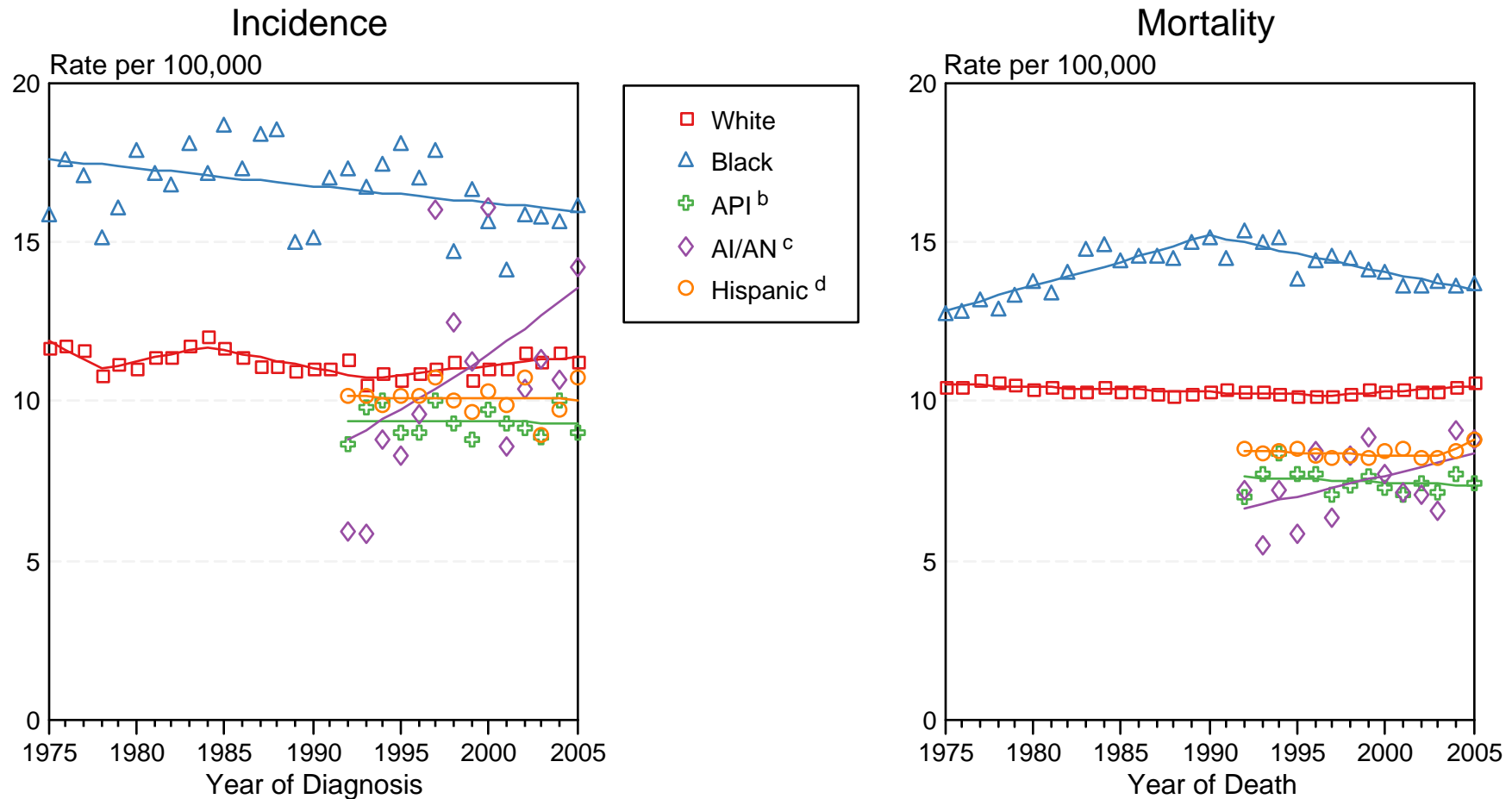


Figure XXII-2

Source: Incidence data for whites and blacks are from the SEER 9 areas (San Francisco, Connecticut, Detroit, Hawaii, Iowa, New Mexico, Seattle, Utah, Atlanta).

Incidence data for Asian/Pacific Islanders, American Indians/Alaska Natives and Hispanics are from the SEER 13 Areas (SEER 9 Areas, San Jose-Monterey, Los Angeles, Alaska Native Registry and Rural Georgia). Mortality data are from US Mortality Files, National Center for Health Statistics, CDC.

^a Rates are age-adjusted to the 2000 US Std Population (19 age groups - Census P25-1103).

Regression lines are calculated using the Joinpoint Regression Program Version 3.3.1, April 2008, National Cancer Institute. Joinpoint analyses for Whites and Blacks during the 1975-2005 period allow a maximum of 4 joinpoints. Analyses for other ethnic groups during the period 1992-2005 allow a maximum of 3 joinpoints.

^b API = Asian/Pacific Islander.

^c AI/AN = American Indian/Alaska Native. Rates for American Indian/Alaska Native are based on the CHSDA (Contract Health Service Delivery Area) counties.

^d Hispanic is not mutually exclusive from whites, blacks, Asian/Pacific Islanders, and American Indians/Alaska Natives. Incidence data for Hispanics are based on NHIA and exclude cases from the Alaska Native Registry. Mortality data for Hispanics exclude cases from Connecticut, Maine, Maryland, Minnesota, New Hampshire, New York, North Dakota, Oklahoma, and Vermont.