

Table 1.23
Age-Adjusted SEER Incidence Rates and Trends for the Top 15 Cancer Sites^a by Race/Ethnicity
Both Sexes

	All Races		White		Black	
	Rate ^b 2002-2006	APC ^c 1997-2006	Rate ^b 2002-2006	APC ^c 1997-2006	Rate ^b 2002-2006	APC ^c 1997-2006
All Sites	462.9	-1.0*	470.6	-0.9*	493.6	-1.4*
Prostate ^f	70.6	-1.2	68.7	-2.1*	99.6	-2.7*
Breast	67.1	-1.9*	68.5	-1.1	74.7	-1.8*
Lung and Bronchus	63.1	-1.5*	64.4	-1.5*	67.4	-0.7*
Colon and Rectum	49.1	-2.4*	48.6	-2.6*	59.9	-1.5*
Urinary Bladder	21.0	-0.4	22.9	2.1*	15.6	-0.2
Melanoma of the Skin	19.6	1.6*	22.8	-0.3	15.0	1.5
Non-Hodgkin Lymphoma	19.5	0.1	20.4	0.2	14.8	0.3
Kidney and Renal Pelvis	13.6	2.3*	14.1	2.4*	12.8	-0.1
Corpus and Uterus, NOS ^f	12.5	-1.0*	12.9	-1.3*	12.1	-3.3*
Leukemia	12.2	-0.9*	12.8	-1.0*	11.7	-0.2
Pancreas	11.7	0.5	11.5	0.6*	11.7	1.2
Oral Cavity and Pharynx	10.4	-1.5*	10.5	-1.3*	10.5	-2.7*
Thyroid	9.6	5.9*	10.1	6.2*	9.8	-0.7
Stomach	7.9	-1.7*	7.4	-1.9*	8.2	3.3*
Ovary ^{fh}	7.1	-1.8*	7.1	-0.6	5.8	-1.2
	Asian/Pacific Islander		American Indian/Alaska Native ^d		Hispanic ^e	
	Rate ^b 2002-2006	APC ^c 1997-2006	Rate ^b 2002-2006	APC ^c 1997-2006	Rate ^b 2002-2006	APC ^c 1997-2006
All Sites	311.1	-0.9*	313.6	-0.3	350.6	-1.0*
Breast	48.9	-0.9*	44.9	0.6	58.2	-1.5*
Colon and Rectum	40.0	-1.9*	42.3	-1.7	47.4	-0.9*
Prostate ^f	39.4	-0.9	40.2	1.4	38.4	-1.4*
Lung and Bronchus	38.9	-0.9*	33.6	-1.3	32.5	-2.4*
Liver & IBD ^g	14.2	0.1	17.5	2.7	16.7	-0.2
Stomach	13.4	-3.2*	11.2	-4.0	13.2	2.0*
Non-Hodgkin Lymphoma	12.9	-0.9	10.8	0.5	11.7	-2.3*
Thyroid	9.4	3.6*	9.9	4.6	11.4	0.0
Urinary Bladder	9.3	0.1	9.7	-0.9	10.6	-0.1
Corpus and Uterus, NOS ^f	9.1	0.6	8.8	1.6	10.2	1.9*
Pancreas	9.0	-0.1	7.4	-	9.7	-0.4
Oral Cavity and Pharynx	7.8	-2.0*	7.1	-4.3	9.5	0.6
Leukemia	7.3	-1.0	7.0	2.1	8.2	5.2*
Kidney and Renal Pelvis	6.9	2.2*	5.9	-2.3	6.5	-4.1*
Ovary ^{fh}	5.4	-0.5	5.8	0.3	6.1	-1.1

- ^a Top 15 cancer sites selected based on 2002-2006 age-adjusted rates for the race/ethnic group.
- ^b Incidence data used in calculating the rates are from the 17 SEER areas (San Francisco, Connecticut, Detroit, Hawaii, Iowa, New Mexico, Seattle, Utah, Atlanta, San Jose-Monterey, Los Angeles, Alaska Native Registry, Rural Georgia, California excluding SF/SJM/LA, Kentucky, Louisiana and New Jersey). Rates are age-adjusted to the 2000 US Std Population (19 age groups - Census P25-1130).
- ^c The APC is the Annual Percent Change over the time interval. Incidence data used in calculating the trends are from the 13 SEER areas (San Francisco, Connecticut, Detroit, Hawaii, Iowa, New Mexico, Seattle, Utah, Atlanta, San Jose-Monterey, Los Angeles, Alaska Native Registry and Rural Georgia).
- ^d Trends are based on rates age-adjusted to the 2000 US Std Population (19 age groups - Census P25-1130). Rates for American Indian/Alaska Native are based on the CHSDA (Contract Health Service Delivery Area) counties.
- ^e Hispanic is not mutually exclusive from whites, blacks, Asian/Pacific Islanders, and American Indians/Alaska Natives. Incidence data for Hispanics are based on NHIA and exclude cases from the Alaska Native Registry.
- ^f The rates for sex-specific cancer sites are calculated using the population for both sexes combined.
- ^g IBD = Intrahepatic Bile Duct. ONS = Other Nervous System.
- ^h Ovary excludes borderline cases or histologies 8442, 8451, 8462, 8472, and 8473.
- * The APC is significantly different from zero (p<.05).
- Statistic not shown. Rate based on less than 16 cases for the time interval. Trend based on less than 10 cases for at least one year within the time interval.

Table 1.24
Age-Adjusted SEER Incidence Rates and Trends for the Top 15 Cancer Sites^a by Race/Ethnicity

			Males					
All Races			White			Black		
	Rate ^b	APC ^c		Rate ^b	APC ^c		Rate ^b	APC ^c
	2002-2006	1997-2006		2002-2006	1997-2006		2002-2006	1997-2006
All Sites	541.8	-1.2*	All Sites	544.3	-1.1*	All Sites	633.7	-2.4*
Prostate	159.3	-1.6*	Prostate	153.0	-1.6*	Prostate	239.8	-3.0*
Lung and Bronchus	77.7	-2.3*	Lung and Bronchus	77.6	-2.3*	Lung and Bronchus	104.3	-3.3*
Colon and Rectum	57.3	-2.9*	Colon and Rectum	56.9	-3.1*	Colon and Rectum	69.3	-1.8*
Urinary Bladder	37.1	-0.4	Urinary Bladder	40.3	-0.4	Kidney and Renal Pelvis	21.3	1.4
Melanoma of the Skin	25.0	1.7*	Melanoma of the Skin	28.9	2.2*	Urinary Bladder	20.0	-0.6
Non-Hodgkin Lymphoma	23.5	-0.1	Non-Hodgkin Lymphoma	24.4	0.0	Non-Hodgkin Lymphoma	18.3	-0.2
Kidney and Renal Pelvis	18.6	1.8*	Kidney and Renal Pelvis	19.2	1.9*	Stomach	16.8	-3.2*
Leukemia	15.8	-1.4*	Leukemia	16.5	-1.4*	Oral Cavity and Pharynx	16.7	-3.6*
Oral Cavity and Pharynx	15.4	-1.7*	Oral Cavity and Pharynx	15.6	-1.4*	Pancreas	16.6	-0.8
Pancreas	13.1	0.3	Pancreas	13.1	0.4	Myeloma	14.3	0.0
Stomach	11.0	-2.1*	Stomach	9.8	-2.1*	Liver & IBD ^f	13.4	3.4*
Liver & IBD ^f	10.2	2.4*	Liver & IBD ^f	8.6	2.7*	Leukemia	12.7	-1.1
Esophagus	7.7	-0.5	Brain and ONS ^f	8.4	-0.6	Larynx	10.5	-3.2*
Brain and ONS ^f	7.6	-0.7*	Esophagus	7.9	0.1	Esophagus	9.3	-4.1*
Myeloma	7.1	-0.8	Myeloma	6.6	-0.8	Brain and ONS ^f	4.7	-1.0
<hr/>			<hr/>			<hr/>		
Asian/Pacific Islander			American Indian/Alaska Native ^d			Hispanic ^e		
	Rate ^b	APC ^c		Rate ^b	APC ^c		Rate ^b	APC ^c
	2002-2006	1997-2006		2002-2006	1997-2006		2002-2006	1997-2006
All Sites	349.1	-1.2*	All Sites	331.0	-1.7	All Sites	409.7	-1.5*
Prostate	91.1	-0.8	Prostate	76.1	-1.5	Prostate	133.4	-2.0*
Lung and Bronchus	53.4	-1.4*	Lung and Bronchus	51.6	-2.1	Colon and Rectum	46.3	-2.0*
Colon and Rectum	46.9	-2.5*	Colon and Rectum	43.1	-2.7	Lung and Bronchus	43.2	-2.7*
Liver & IBD ^f	21.4	-0.3	Kidney and Renal Pelvis	21.7	-0.6	Urinary Bladder	19.8	-0.4
Stomach	18.0	-3.0*	Stomach	15.5	-2.2	Non-Hodgkin Lymphoma	19.1	-0.4
Urinary Bladder	16.5	0.9	Liver & IBD ^f	13.6	-	Kidney and Renal Pelvis	17.6	2.0*
Non-Hodgkin Lymphoma	15.5	-0.9	Urinary Bladder	12.4	-	Liver & IBD ^f	15.2	2.3*
Oral Cavity and Pharynx	10.8	-2.3*	Non-Hodgkin Lymphoma	11.8	-	Stomach	14.9	-3.6*
Pancreas	10.1	-0.1	Pancreas	10.2	-	Leukemia	11.8	-0.2
Kidney and Renal Pelvis	9.6	1.5	Oral Cavity and Pharynx	9.2	-	Pancreas	11.1	0.6
Leukemia	8.9	-1.8	Leukemia	7.9	-	Oral Cavity and Pharynx	9.0	-2.8*
Thyroid	4.2	1.7	Esophagus	6.8	-	Myeloma	6.4	-0.1
Esophagus	4.0	-2.6*	Testis	4.6	-	Brain and ONS ^f	6.1	0.7
Myeloma	3.9	-2.7	Myeloma	4.6	-	Esophagus	5.1	-3.2
Brain and ONS ^f	3.9	-1.4	Melanoma of the Skin	3.9	-	Larynx	4.9	-3.0*

- ^a Top 15 cancer sites selected based on 2002-2006 age-adjusted rates for the race/ethnic group.
- ^b Incidence data used in calculating the rates are from the 17 SEER areas (San Francisco, Connecticut, Detroit, Hawaii, Iowa, New Mexico, Seattle, Utah, Atlanta, San Jose-Monterey, Los Angeles, Alaska Native Registry, Rural Georgia, California excluding SF/SJM/LA, Kentucky, Louisiana and New Jersey). Rates are age-adjusted to the 2000 US Std Population (19 age groups - Census P25-1130).
- ^c The APC is the Annual Percent Change over the time interval. Incidence data used in calculating the trends are from the 13 SEER areas (San Francisco, Connecticut, Detroit, Hawaii, Iowa, New Mexico, Seattle, Utah, Atlanta, San Jose-Monterey, Los Angeles, Alaska Native Registry and Rural Georgia). Trends are based on rates age-adjusted to the 2000 US Std Population (19 age groups - Census P25-1130).
- ^d Rates for American Indian/Alaska Native are based on the CHSDA (Contract Health Service Delivery Area) counties.
- ^e Hispanic is not mutually exclusive from whites, blacks, Asian/Pacific Islanders, and American Indians/Alaska Natives. Incidence data for Hispanics are based on NHIA and exclude cases from the Alaska Native Registry.
- ^f IBD = Intrahepatic Bile Duct. ONS = Other Nervous System.
- * The APC is significantly different from zero (p<.05).
- Statistic not shown. Rate based on less than 16 cases for the time interval. Trend based on less than 10 cases for at least one year within the time interval.

Table 1.25
Age-Adjusted SEER Incidence Rates and Trends for the Top 15 Cancer Sites^a by Race/Ethnicity

Females

	All Races		White		Black			
	Rate ^b 2002-2006	APC ^c 1997-2006	Rate ^b 2002-2006	APC ^c 1997-2006	Rate ^b 2002-2006	APC ^c 1997-2006		
All Sites	408.5	-0.8*	420.5	-0.8*	398.9	-0.4*		
Breast	123.8	-1.8*	127.8	-1.9*	117.7	-0.6*		
Lung and Bronchus	52.5	-0.6*	54.8	-0.7*	54.7	0.3		
Colon and Rectum	42.8	-2.1*	42.1	-2.3*	53.5	-1.3*		
Corpus and Uterus, NOS	23.3	-0.8*	24.2	-1.0*	20.3	1.3		
Non-Hodgkin Lymphoma	16.4	0.4	Melanoma of the Skin	18.7	2.1*	Pancreas	14.6	0.2
Melanoma of the Skin	15.8	1.6*	Non-Hodgkin Lymphoma	17.2	0.5	Non-Hodgkin Lymphoma	12.2	0.7
Thyroid	14.2	6.2*	Thyroid	15.0	6.5*	Cervix Uteri	10.4	-5.2*
Ovary ^g	13.1	-1.6*	Ovary ^g	13.8	-1.7*	Kidney and Renal Pelvis	10.3	1.6
Pancreas	10.4	0.6*	Pancreas	10.2	0.8*	Ovary ^g	10.1	-1.0
Kidney and Renal Pelvis	9.5	2.8*	Urinary Bladder	9.9	-0.6	Myeloma	10.0	-0.4
Leukemia	9.5	-0.5	Leukemia	9.9	-0.6	Stomach	9.0	-3.1*
Urinary Bladder	9.3	-0.6*	Kidney and Renal Pelvis	9.9	2.9*	Thyroid	8.4	6.8*
Cervix Uteri	8.2	-3.3*	Cervix Uteri	8.1	-2.8*	Urinary Bladder	7.9	0.3
Oral Cavity and Pharynx	6.1	-1.4*	Oral Cavity and Pharynx	6.1	-1.5*	Leukemia	7.8	-0.3
Stomach	5.5	-1.3*	Brain and ONS ^f	5.9	-0.7	Oral Cavity and Pharynx	5.8	-1.1
<hr/>								
	Asian/Pacific Islander		American Indian/Alaska Native ^d		Hispanic ^e			
	Rate ^b 2002-2006	APC ^c 1997-2006	Rate ^b 2002-2006	APC ^c 1997-2006	Rate ^b 2002-2006	APC ^c 1997-2006		
All Sites	287.5	-0.5	All Sites	302.2	1.0	All Sites	312.5	-0.6*
Breast	89.5	-0.9*	Breast	74.4	1.4	Breast	88.3	-0.6
Colon and Rectum	34.6	-1.2	Colon and Rectum	41.2	-0.5	Colon and Rectum	32.2	-0.9*
Lung and Bronchus	28.1	0.3	Lung and Bronchus	39.8	4.2	Lung and Bronchus	24.7	-1.9*
Corpus and Uterus, NOS	16.8	0.6	Corpus and Uterus, NOS	16.3	1.5	Corpus and Uterus, NOS	17.8	1.0
Thyroid	14.2	4.1*	Kidney and Renal Pelvis	14.1	-	Non-Hodgkin Lymphoma	14.6	0.2
Non-Hodgkin Lymphoma	10.9	-0.6	Ovary ^g	10.8	-2.2	Thyroid	12.9	5.6*
Stomach	10.0	-3.3*	Non-Hodgkin Lymphoma	10.0	-	Cervix Uteri	12.7	-3.8*
Ovary ^g	9.9	-0.6	Pancreas	9.3	-	Ovary ^g	11.3	-0.9
Liver & IBD ^f	8.3	0.8	Thyroid	8.5	-0.2	Pancreas	10.2	-0.8
Pancreas	8.2	-0.2	Stomach	7.9	-	Kidney and Renal Pelvis	9.6	1.9*
Cervix Uteri	7.6	-4.6*	Cervix Uteri	7.2	0.0	Stomach	9.3	-1.0
Leukemia	6.1	-0.1	Liver & IBD ^f	6.6	-	Leukemia	8.1	-0.8
Oral Cavity and Pharynx	5.4	-1.5	Leukemia	6.1	-	Liver & IBD ^f	5.9	0.5
Kidney and Renal Pelvis	4.8	3.4*	Oral Cavity and Pharynx	5.1	-	Urinary Bladder	5.3	0.4
Urinary Bladder	4.0	-1.4	Myeloma	5.1	-	Melanoma of the Skin	4.7	-1.7

- ^a Top 15 cancer sites selected based on 2002-2006 age-adjusted rates for the race/ethnic group.
- ^b Incidence data used in calculating the rates are from the 17 SEER areas (San Francisco, Connecticut, Detroit, Hawaii, Iowa, New Mexico, Seattle, Utah, Atlanta, San Jose-Monterey, Los Angeles, Alaska Native Registry, Rural Georgia, California excluding SF/SJM/LA, Kentucky, Louisiana and New Jersey). Rates are age-adjusted to the 2000 US Std Population (19 age groups - Census P25-1130).
- ^c The APC is the Annual Percent Change over the time interval. Incidence data used in calculating the trends are from the 13 SEER areas (San Francisco, Connecticut, Detroit, Hawaii, Iowa, New Mexico, Seattle, Utah, Atlanta, San Jose-Monterey, Los Angeles, Alaska Native Registry and Rural Georgia). Trends are based on rates age-adjusted to the 2000 US Std Population (19 age groups - Census P25-1130).
- ^d Rates for American Indian/Alaska Native are based on the CHSDA (Contract Health Service Delivery Area) counties.
- ^e Hispanic is not mutually exclusive from whites, blacks, Asian/Pacific Islanders, and American Indians/Alaska Natives. Incidence data for Hispanics are based on NHIA and exclude cases from the Alaska Native Registry.
- ^f IBD = Intrahepatic Bile Duct. ONS = Other Nervous System.
- ^g Ovary excludes borderline cases or histologies 8442, 8451, 8462, 8472, and 8473.
- * The APC is significantly different from zero (p<.05).
- Statistic not shown. Rate based on less than 16 cases for the time interval. Trend based on less than 10 cases for at least one year within the time interval.

SEER Incidence 1997-2006

Males by Race/Ethnicity

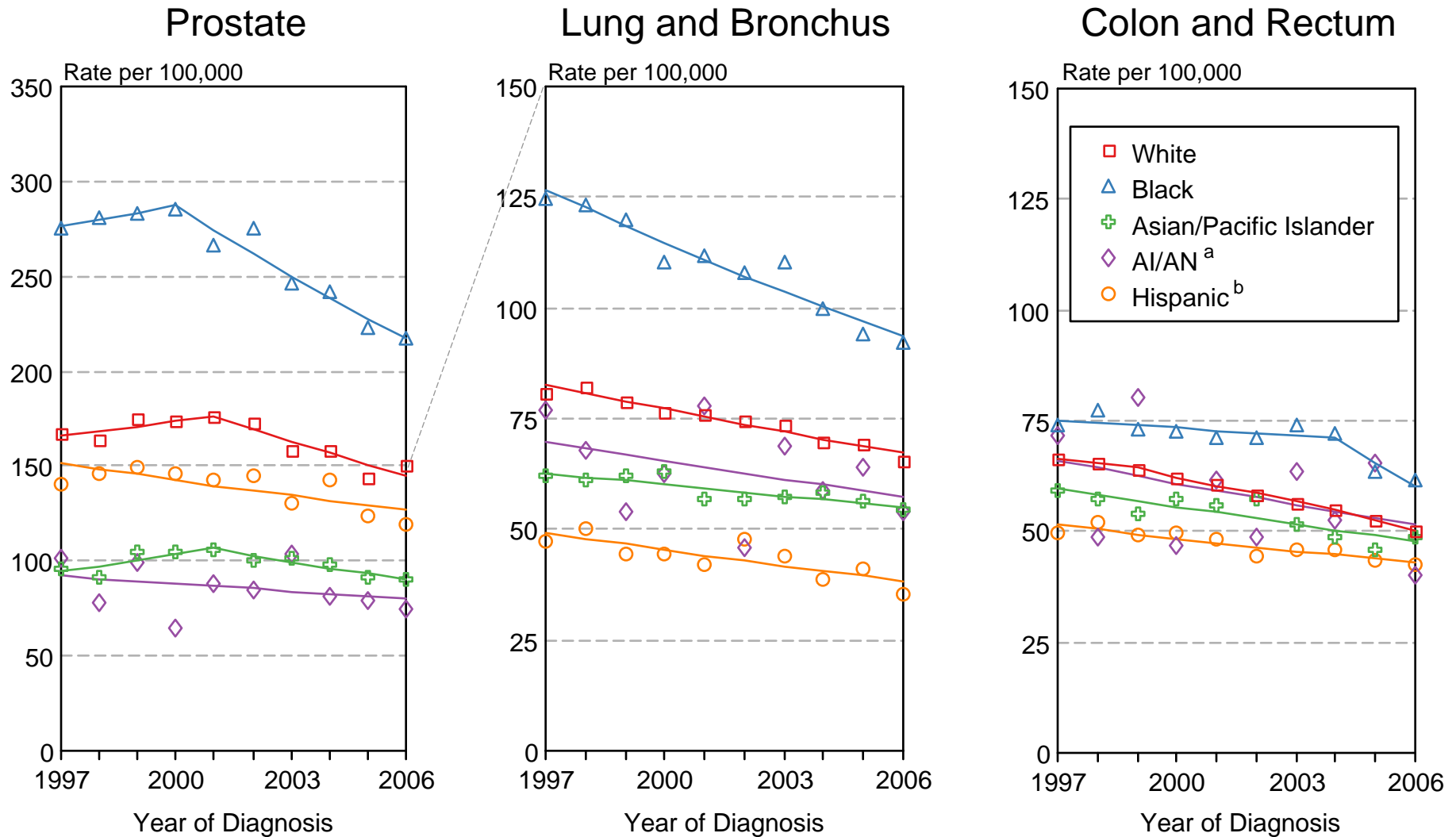


Figure 1.13

Source: SEER 13 areas (San Francisco, Connecticut, Detroit, Hawaii, Iowa, New Mexico, Seattle, Utah, Atlanta, San Jose-Monterey, Los Angeles, Alaska Native Registry and Rural Georgia). Rates are age-adjusted to the 2000 US Std Population (19 age groups - Census P25-1103). Regression lines are calculated using the Joinpoint Regression Program Version 3.3.1, April 2008, National Cancer Institute.

^a Incidence rates for American Indian/Alaska Native (AI/AN) are based on the CHSDA (Contract Health Service Delivery Area) counties.

^b Hispanic is not mutually exclusive from whites, blacks, Asian/Pacific Islanders, and American Indians/Alaska Natives. Incidence data for Hispanics are based on NHIA and exclude cases from the Alaska Native Registry.

SEER Incidence 1997-2006 Females by Race/Ethnicity

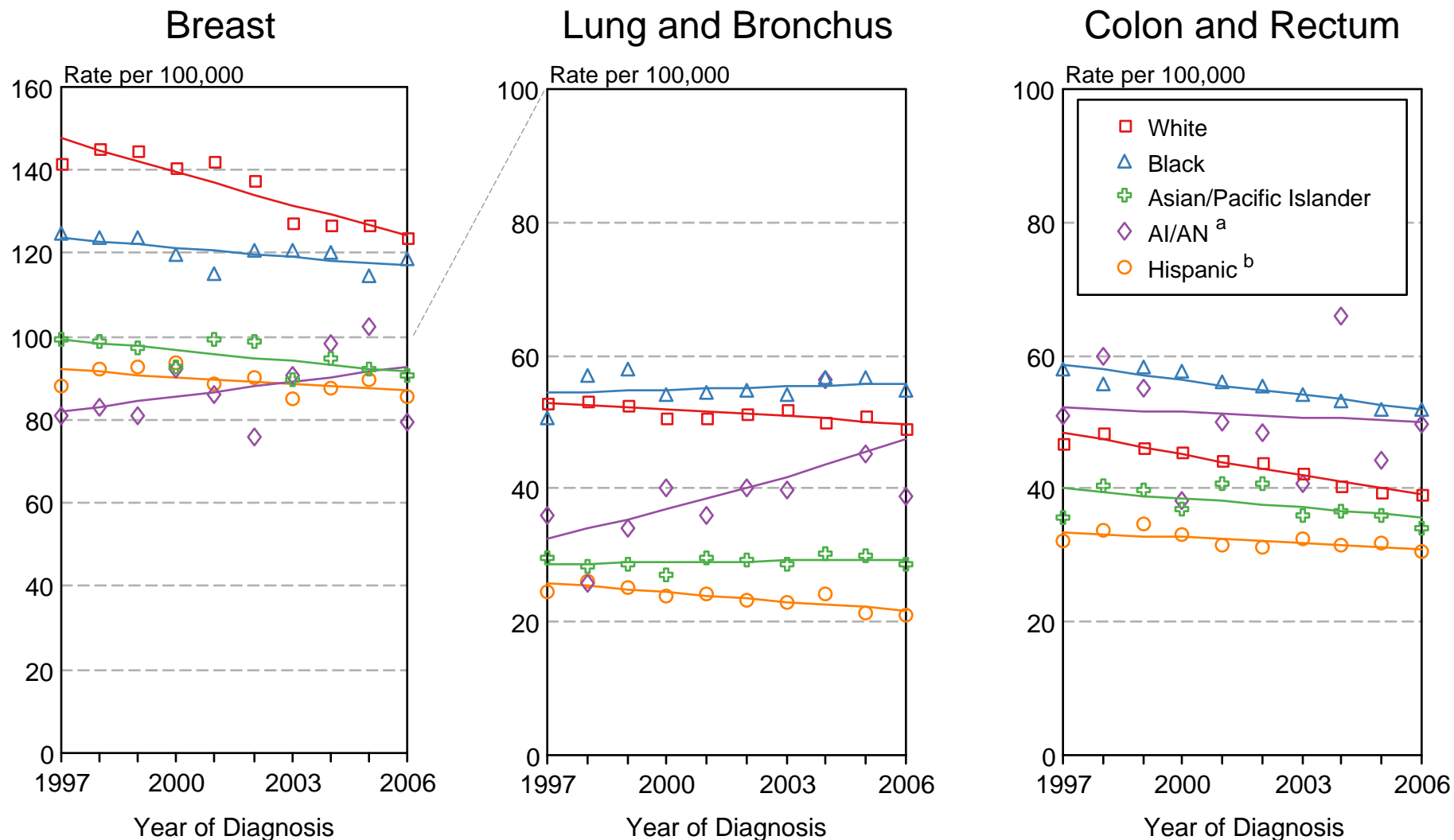


Figure 1.14

Source: SEER 13 areas (San Francisco, Connecticut, Detroit, Hawaii, Iowa, New Mexico, Seattle, Utah, Atlanta, San Jose-Monterey, Los Angeles, Alaska Native Registry and Rural Georgia). Rates are age-adjusted to the 2000 US Std Population (19 age groups - Census P25-1103). Regression lines are calculated using the Joinpoint Regression Program Version 3.3.1, April 2008, National Cancer Institute.

^a Incidence rates for American Indian/Alaska Native (AI/AN) are based on the CHSDA (Contract Health Service Delivery Area) counties.

^b Hispanic is not mutually exclusive from whites, blacks, Asian/Pacific Islanders, and American Indians/Alaska Natives. Incidence data for Hispanics are based on NHIA and exclude cases from the Alaska Native Registry.