

Table 2.1
All Cancer Sites (Invasive)

Trends in SEER Incidence^{ab} and U.S. Mortality^c Using the Joinpoint Regression Program,
1975-2007 With up to Four Joinpoints, 1992-2007 With up to Two Joinpoints,
Both Sexes by Race/Ethnicity

	Joinpoint Trend 1		Joinpoint Trend 2		Joinpoint Trend 3		Joinpoint Trend 4		Joinpoint Trend 5		AAPC ^d	
	Years	APC	Years	APC	Years	APC	Years	APC	Years	APC	1998-2007	2003-2007
<u>SEER 9 Delay-Adjusted Incidence^a, 1975-2007</u>												
All Races	1975-1989	1.2*	1989-1992	2.8	1992-1995	-2.4	1995-1999	0.9	1999-2007	-0.7*	-0.5*	-0.7*
White	1975-1982	0.9*	1982-1992	1.8*	1992-1995	-2.0	1995-1999	1.1	1999-2007	-0.6*	-0.4*	-0.6*
Black	1975-1984	1.6*	1984-1989	0.4	1989-1992	4.2*	1992-2007	-0.8*			-0.8*	-0.8*
<u>SEER 13 Delay-Adjusted Incidence^b, 1992-2007</u>												
All Races	1992-1994	-3.1*	1994-1999	0.4	1999-2007	-0.8*					-0.7*	-0.8*
White	1992-1994	-3.3*	1994-1999	0.6	1999-2007	-0.7*					-0.6*	-0.7*
Black	1992-2007	-0.8*									-0.8*	-0.8*
<u>SEER 9 Observed Incidence^a, 1975-2007</u>												
All Races	1975-1989	1.2*	1989-1992	2.8*	1992-1995	-2.4	1995-1999	0.9	1999-2007	-0.9*	-0.7*	-0.9*
White	1975-1982	0.9*	1982-1992	1.8*	1992-1995	-2.1	1995-1999	1.1	1999-2007	-0.9*	-0.7*	-0.9*
Black	1975-1984	1.6*	1984-1989	0.4	1989-1992	4.4*	1992-2007	-1.0*			-1.0*	-1.0*
<u>SEER 13 Observed Incidence^b, 1992-2007</u>												
All Races	1992-1994	-3.2*	1994-1999	0.4	1999-2007	-1.0*					-0.8*	-1.0*
White	1992-1994	-3.4*	1994-1999	0.6	1999-2007	-1.0*					-0.8*	-1.0*
White NH ^{ef}	1992-1994	-3.3*	1994-1999	0.8*	1999-2007	-0.8*					-0.6*	-0.8*
Black	1992-2004	-0.8*	2004-2007	-2.4*							-1.4*	-2.0*
Black NH ^{ef}	1992-2004	-0.8*	2004-2007	-2.2*							-1.3*	-1.8*
API ^e	1992-2007	-0.6*									-0.6*	-0.6*
AI/AN ^{eg}	1992-2007	-0.1									-0.1	-0.1
Hispanic ^f	1992-2002	-0.3	2002-2007	-1.7*							-1.1*	-1.7*
<u>U.S. Cancer Mortality^c, 1975-2007</u>												
All Races	1975-1990	0.5*	1990-1993	-0.3	1993-2001	-1.1*	2001-2007	-1.6*			-1.4*	-1.6*
White	1975-1990	0.4*	1990-1994	-0.3	1994-1997	-1.4*	1997-2000	-0.6	2000-2007	-1.5*	-1.3*	-1.5*
Black	1975-1983	1.3*	1983-1991	0.7*	1991-1997	-1.0*	1997-2007	-2.0*			-2.0*	-2.0*
<u>U.S. Cancer Mortality^c, 1992-2007</u>												
All Races	1992-2001	-1.0*	2001-2007	-1.6*							-1.4*	-1.6*
White	1992-2001	-0.9*	2001-2007	-1.5*							-1.3*	-1.5*
White NH ^{ef}	1992-2002	-0.8*	2002-2007	-1.4*							-1.2*	-1.4*
Black	1992-1997	-1.1*	1997-2007	-2.0*							-2.0*	-2.0*
Black NH ^{ef}	1992-1999	-1.2*	1999-2007	-1.9*							-1.8*	-1.9*
API ^e	1992-2007	-1.6*									-1.6*	-1.6*
AI/AN ^{eg}	1992-2007	-0.2									-0.2	-0.2
Hispanic ^f	1992-1999	-0.2	1999-2007	-2.0*							-1.8*	-2.0*

Joinpoint Regression Program Version 3.4.3, April 2010, National Cancer Institute. (<http://srab.cancer.gov/joinpoint/>).

The APC is the Annual Percent Change based on rates age-adjusted to the 2000 US Std Population (19 age groups - Census P25-1130).

^a Trends are from the SEER 9 areas (San Francisco, Connecticut, Detroit, Hawaii, Iowa, New Mexico, Seattle, Utah, and Atlanta).

^b Trends are from the SEER 13 areas (SEER 9 Areas, Los Angeles, San Jose-Monterey, Rural Georgia, and the Alaska Native Registry).

^c Trends are from US Mortality Files, National Center for Health Statistics, Centers for Disease Control and Prevention.

^d The AAPC is the Average Annual Percent Change and is based on the APCs calculated by Joinpoint.

^e API - Asian/Pacific Islander, AI/AN - American Indian/Alaska Native, NH - Non-Hispanic

^f Hispanic and Non-Hispanic are not mutually exclusive from whites, blacks, Asian/Pacific Islanders, and American Indians/Alaska

Natives. Incidence data for Hispanics and Non-Hispanics are based on NHIA and exclude cases from the Alaska Native Registry.

The Hispanic and Non-Hispanic mortality trends exclude deaths from CT, DC, ME, MD, MN, NH, NY, ND, OK and VT.

^g Data for American Indian/Alaska Native are based on the CHSDA (Contract Health Service Delivery Area) counties.

* The APC/AAPC is significantly different from zero ($p < .05$).

- Joinpoint regression line analysis could not be performed on data series.

Table 2.2
All Cancer Sites (Invasive)

Trends in SEER Incidence^{ab} and U.S. Mortality^c Using the Joinpoint Regression Program,
1975-2007 With up to Four Joinpoints, 1992-2007 With up to Two Joinpoints,
Males by Race/Ethnicity

	Joinpoint Trend 1		Joinpoint Trend 2		Joinpoint Trend 3		Joinpoint Trend 4		Joinpoint Trend 5		AAPC ^d	
	Years	APC	Years	APC	Years	APC	Years	APC	Years	APC	1998-2007	2003-2007
<u>SEER 9 Delay-Adjusted Incidence^a, 1975-2007</u>												
All Races	1975-1989	1.3*	1989-1992	5.2*	1992-1995	-4.8*	1995-2000	0.4	2000-2007	-1.1*	-0.7*	-1.1*
White	1975-1989	1.4*	1989-1992	5.0*	1992-1995	-5.1*	1995-2000	0.7	2000-2007	-1.0*	-0.6*	-1.0*
Black	1975-1981	2.8*	1981-1989	0.7	1989-1992	6.8*	1992-2007	-1.6*			-1.6*	-1.6*
<u>SEER 13 Delay-Adjusted Incidence^b, 1992-2007</u>												
All Races	1992-1995	-4.5*	1995-2000	0.2	2000-2007	-1.2*					-0.9*	-1.2*
White	1992-1994	-6.6*	1994-2001	-0.1	2001-2007	-1.1*					-0.8*	-1.1*
Black	1992-2007	-1.7*									-1.7*	-1.7*
<u>SEER 9 Observed Incidence^a, 1975-2007</u>												
All Races	1975-1989	1.3*	1989-1992	5.2*	1992-1995	-4.8*	1995-2000	0.4	2000-2007	-1.3*	-0.9*	-1.3*
White	1975-1989	1.4*	1989-1992	5.0*	1992-1995	-5.2*	1995-2000	0.7	2000-2007	-1.3*	-0.9*	-1.3*
Black	1975-1981	2.8*	1981-1989	0.6	1989-1992	7.0*	1992-2007	-1.8*			-1.8*	-1.8*
<u>SEER 13 Observed Incidence^b, 1992-2007</u>												
All Races	1992-1995	-4.5*	1995-2000	0.2	2000-2007	-1.4*					-1.1*	-1.4*
White	1992-1994	-6.7*	1994-2001	-0.1	2001-2007	-1.5*					-1.0*	-1.5*
White NH ^{ef}	1992-1994	-6.7*	1994-2001	0.0	2001-2007	-1.3*					-0.8*	-1.3*
Black	1992-2002	-1.5*	2002-2007	-3.0*							-2.3*	-3.0*
Black NH ^{ef}	1992-2003	-1.5*	2003-2007	-3.1*							-2.2*	-3.1*
API ^e	1992-1996	-2.8*	1996-2000	0.4	2000-2007	-1.5*					-1.1*	-1.5*
AI/AN ^{eg}	1992-2007	-1.0*									-1.0*	-1.0*
Hispanic ^f	1992-2004	-0.9*	2004-2007	-3.2*							-1.7*	-2.6*
<u>U.S. Cancer Mortality^c, 1975-2007</u>												
All Races	1975-1979	1.0*	1979-1990	0.3*	1990-1993	-0.4	1993-2001	-1.5*	2001-2007	-1.9*	-1.8*	-1.9*
White	1975-1980	0.8*	1980-1992	0.2*	1992-2001	-1.4*	2001-2007	-1.8*			-1.6*	-1.8*
Black	1975-1982	1.8*	1982-1990	1.0*	1990-1995	-0.7*	1995-2007	-2.5*			-2.5*	-2.5*
<u>U.S. Cancer Mortality^c, 1992-2007</u>												
All Races	1992-2000	-1.4*	2000-2007	-1.9*							-1.8*	-1.9*
White	1992-2001	-1.4*	2001-2007	-1.8*							-1.6*	-1.8*
White NH ^{ef}	1992-2007	-1.4*									-1.4*	-1.4*
Black	1992-1996	-1.2*	1996-2007	-2.5*							-2.5*	-2.5*
Black NH ^{ef}	1992-1996	-1.3*	1996-2007	-2.3*							-2.3*	-2.3*
API ^e	1992-2007	-2.0*									-2.0*	-2.0*
AI/AN ^{eg}	1992-2007	-0.5*									-0.5*	-0.5*
Hispanic ^f	1992-1998	0.0	1998-2007	-2.5*							-2.5*	-2.5*

Joinpoint Regression Program Version 3.4.3, April 2010, National Cancer Institute. (<http://srab.cancer.gov/joinpoint/>).

The APC is the Annual Percent Change based on rates age-adjusted to the 2000 US Std Population (19 age groups - Census P25-1130).

^a Trends are from the SEER 9 areas (San Francisco, Connecticut, Detroit, Hawaii, Iowa, New Mexico, Seattle, Utah, and Atlanta).

^b Trends are from the SEER 13 areas (SEER 9 Areas, Los Angeles, San Jose-Monterey, Rural Georgia, and the Alaska Native Registry).

^c Trends are from US Mortality Files, National Center for Health Statistics, Centers for Disease Control and Prevention.

^d The AAPC is the Average Annual Percent Change and is based on the APCs calculated by Joinpoint.

^e API - Asian/Pacific Islander, AI/AN - American Indian/Alaska Native, NH - Non-Hispanic

^f Hispanic and Non-Hispanic are not mutually exclusive from whites, blacks, Asian/Pacific Islanders, and American Indians/Alaska

Natives. Incidence data for Hispanics and Non-Hispanics are based on NHIA and exclude cases from the Alaska Native Registry.

The Hispanic and Non-Hispanic mortality trends exclude deaths from CT, DC, ME, MD, MN, NH, NY, ND, OK and VT.

^g Data for American Indian/Alaska Native are based on the CHSDA (Contract Health Service Delivery Area) counties.

* The APC/AAPC is significantly different from zero ($p < .05$).

- Joinpoint regression line analysis could not be performed on data series.

Table 2.3
All Cancer Sites (Invasive)

Trends in SEER Incidence^{ab} and U.S. Mortality^c Using the Joinpoint Regression Program,
1975-2007 With up to Four Joinpoints, 1992-2007 With up to Two Joinpoints,
Females by Race/Ethnicity

	Joinpoint Trend 1		Joinpoint Trend 2		Joinpoint Trend 3		Joinpoint Trend 4		Joinpoint Trend 5		AAPC ^d	
	Years	APC	Years	APC	Years	APC	Years	APC	Years	APC	1998-2007	2003-2007
<u>SEER 9 Delay-Adjusted Incidence^a, 1975-2007</u>												
All Races	1975-1979	-0.3	1979-1987	1.6*	1987-1995	0.1	1995-1998	1.4	1998-2007	-0.5*	-0.5*	-0.5*
White	1975-1979	-0.2	1979-1987	1.7*	1987-1995	0.1	1995-1998	1.7	1998-2007	-0.4*	-0.4*	-0.4*
Black	1975-1991	1.1*	1991-2007	0.0							0.0	0.0
<u>SEER 13 Delay-Adjusted Incidence^b, 1992-2007</u>												
All Races	1992-1998	0.8*	1998-2007	-0.6*							-0.6*	-0.6*
White	1992-1998	1.0*	1998-2007	-0.6*							-0.6*	-0.6*
Black	1992-2007	0.0									0.0	0.0
<u>SEER 9 Observed Incidence^a, 1975-2007</u>												
All Races	1975-1979	-0.3	1979-1987	1.6*	1987-1995	0.1	1995-1998	1.4	1998-2007	-0.7*	-0.7*	-0.7*
White	1975-1979	-0.2	1979-1987	1.7*	1987-1995	0.1	1995-1998	1.8	1998-2007	-0.7*	-0.7*	-0.7*
Black	1975-1991	1.1*	1991-2007	-0.1							-0.1	-0.1
<u>SEER 13 Observed Incidence^b, 1992-2007</u>												
All Races	1992-1998	0.8*	1998-2007	-0.8*							-0.8*	-0.8*
White	1992-1994	-0.3	1994-1998	1.4*	1998-2007	-0.8*					-0.8*	-0.8*
White NH ^{ef}	1992-1998	1.2*	1998-2007	-0.6*							-0.6*	-0.6*
Black	1992-2007	-0.2									-0.2	-0.2
Black NH ^{ef}	1992-2007	-0.1									-0.1	-0.1
API ^e	1992-2007	0.0									0.0	0.0
AI/AN ^{eg}	1992-2007	0.7									0.7*	0.7*
Hispanic ^f	1992-1999	0.6	1999-2007	-0.8*							-0.7*	-0.8*
<u>U.S. Cancer Mortality^c, 1975-2007</u>												
All Races	1975-1990	0.6*	1990-1994	-0.1	1994-2002	-0.8*	2002-2007	-1.5*			-1.2*	-1.5*
White	1975-1990	0.6*	1990-1995	-0.2	1995-1998	-1.2*	1998-2001	-0.3	2001-2007	-1.4*	-1.1*	-1.4*
Black	1975-1991	1.0*	1991-1999	-0.6*	1999-2007	-1.5*					-1.4*	-1.5*
<u>U.S. Cancer Mortality^c, 1992-2007</u>												
All Races	1992-2001	-0.7*	2001-2007	-1.4*							-1.2*	-1.4*
White	1992-2001	-0.7*	2001-2007	-1.4*							-1.1*	-1.4*
White NH ^{ef}	1992-2001	-0.5*	2001-2007	-1.2*							-1.0*	-1.2*
Black	1992-1999	-0.6*	1999-2007	-1.5*							-1.4*	-1.5*
Black NH ^{ef}	1992-1997	-0.3	1997-2003	-1.0*	2003-2007	-1.7*					-1.3*	-1.7*
API ^e	1992-2007	-1.1*									-1.1*	-1.1*
AI/AN ^{eg}	1992-2007	0.0									0.0	0.0
Hispanic ^f	1992-2000	-0.2	2000-2007	-1.6*							-1.3*	-1.6*

Joinpoint Regression Program Version 3.4.3, April 2010, National Cancer Institute. (<http://srab.cancer.gov/joinpoint/>).

The APC is the Annual Percent Change based on rates age-adjusted to the 2000 US Std Population (19 age groups - Census P25-1130).

^a Trends are from the SEER 9 areas (San Francisco, Connecticut, Detroit, Hawaii, Iowa, New Mexico, Seattle, Utah, and Atlanta).

^b Trends are from the SEER 13 areas (SEER 9 Areas, Los Angeles, San Jose-Monterey, Rural Georgia, and the Alaska Native Registry).

^c Trends are from US Mortality Files, National Center for Health Statistics, Centers for Disease Control and Prevention.

^d The AAPC is the Average Annual Percent Change and is based on the APCs calculated by Joinpoint.

^e API - Asian/Pacific Islander, AI/AN - American Indian/Alaska Native, NH - Non-Hispanic

^f Hispanic and Non-Hispanic are not mutually exclusive from whites, blacks, Asian/Pacific Islanders, and American Indians/Alaska

Natives. Incidence data for Hispanics and Non-Hispanics are based on NHIA and exclude cases from the Alaska Native Registry.

The Hispanic and Non-Hispanic mortality trends exclude deaths from CT, DC, ME, MD, MN, NH, NY, ND, OK and VT.

^g Data for American Indian/Alaska Native are based on the CHSDA (Contract Health Service Delivery Area) counties.

* The APC/AAPC is significantly different from zero ($p < .05$).

- Joinpoint regression line analysis could not be performed on data series.

Table 2.4
All Cancer Sites (Invasive)

Delay-adjusted SEER Incidence^a Rates by Year, Race and Sex

Year of Diagnosis:	All Races			Whites			Blacks		
	Total	Males	Females	Total	Males	Females	Total	Males	Females
1975	400.39	466.78	365.84	402.12	468.58	369.56	426.23	525.13	356.46
1976	407.40	481.17	367.40	409.69	481.86	373.12	427.38	553.02	340.44
1977	407.74	486.49	363.71	409.26	487.08	367.86	442.62	577.65	352.01
1978	407.31	488.40	362.20	409.79	489.81	367.90	436.45	570.52	344.13
1979	412.50	496.48	365.51	414.06	497.57	369.63	451.54	589.90	358.94
1980	417.98	505.73	368.05	419.44	505.14	373.35	467.25	614.90	366.30
1981	425.25	510.87	377.08	427.66	510.87	383.85	472.76	633.98	362.95
1982	424.47	511.09	376.16	427.76	512.49	383.40	465.39	621.93	359.77
1983	431.18	519.99	380.80	434.45	521.04	388.01	487.09	645.93	382.19
1984	439.99	525.50	392.44	443.67	527.75	399.57	488.29	644.13	386.12
1985	448.80	531.22	403.08	453.47	533.59	411.50	488.65	643.18	387.82
1986	451.39	538.29	402.27	456.01	543.01	409.05	494.04	644.34	396.57
1987	468.08	563.23	413.32	475.04	568.95	423.50	501.32	666.65	394.25
1988	463.90	558.52	409.24	470.48	565.40	417.96	504.19	657.85	404.62
1989	467.81	567.10	408.35	475.36	573.81	418.75	492.89	661.73	384.76
1990	482.01	592.78	415.54	489.18	599.67	425.06	521.39	699.80	408.13
1991	503.16	637.67	418.97	510.78	645.03	428.64	549.74	765.66	413.19
1992	510.73	658.26	415.00	517.28	663.87	423.95	568.77	808.64	413.48
1993	493.61	622.31	408.53	497.61	621.05	417.64	568.88	818.98	404.56
1994	483.67	589.93	413.64	488.07	588.36	423.59	558.41	783.98	409.42
1995	477.03	571.63	415.04	482.75	570.87	426.66	542.90	748.20	405.53
1996	479.39	572.72	418.32	485.60	574.72	428.82	541.17	727.89	417.54
1997	486.80	575.98	428.80	494.63	577.76	442.05	540.93	739.80	411.13
1998	488.40	572.86	434.08	497.78	577.52	447.86	535.44	722.09	415.31
1999	491.15	581.47	431.06	500.22	584.66	445.06	541.13	723.32	421.54
2000	486.59	580.05	422.72	498.12	585.31	439.57	528.14	713.58	403.95
2001	489.37	579.78	426.95	501.86	587.72	443.46	519.90	697.71	399.75
2002	486.38	572.29	427.31	497.97	580.76	441.53	534.33	698.02	424.39
2003	473.35	556.75	415.83	485.56	563.90	432.24	517.30	677.02	409.84
2004	473.28	553.49	417.63	485.39	561.91	432.61	518.27	674.63	414.22
2005	467.42	541.57	416.08	481.08	552.68	432.06	501.88	631.35	415.06
2006	468.16	542.81	415.33	480.99	551.63	431.53	499.86	630.89	409.93
2007	472.68	550.30	417.28	485.43	559.78	432.82	502.95	636.57	410.88

^a Additional information on the model used to delay-adjust SEER Incidence rates can be found at (<http://srab.cancer.gov/delay/>).

SEER 9 areas (San Francisco, Connecticut, Detroit, Hawaii, Iowa, New Mexico, Seattle, Utah, and Atlanta).

Rates are per 100,000 and are age-adjusted to the 2000 US Std Population (19 age groups - Census P25-1130).

- Delay-adjusted rate is not shown for observed rates based on less than 16 cases for the time interval.

Table 2.5
All Cancer Sites (Invasive)

Age-adjusted SEER Incidence^a Rates by Year, Race and Sex

Year of Diagnosis:	All Races			Whites			Blacks		
	Total	Males	Females	Total	Males	Females	Total	Males	Females
1975	400.39	466.78	365.84	402.12	468.58	369.56	426.23	525.13	356.46
1976	407.40	481.17	367.40	409.69	481.86	373.12	427.38	553.02	340.44
1977	407.74	486.49	363.71	409.26	487.08	367.86	442.62	577.65	352.01
1978	407.31	488.40	362.20	409.79	489.81	367.90	436.45	570.52	344.13
1979	412.50	496.48	365.51	414.06	497.57	369.63	451.54	589.90	358.94
1980	417.98	505.73	368.05	419.44	505.14	373.35	467.25	614.90	366.30
1981	425.25	510.87	377.08	427.66	510.87	383.85	472.76	633.98	362.95
1982	424.45	511.07	376.14	427.73	512.46	383.38	465.34	621.86	359.74
1983	431.15	519.95	380.77	434.39	520.96	387.96	486.99	645.78	382.12
1984	439.94	525.44	392.39	443.57	527.62	399.49	488.12	643.90	386.00
1985	448.73	531.12	403.02	453.32	533.40	411.37	488.42	642.85	387.65
1986	451.28	538.16	402.18	455.82	542.76	408.89	493.74	643.91	396.34
1987	467.94	563.06	413.21	474.79	568.62	423.29	500.93	666.09	393.97
1988	463.73	558.31	409.09	470.16	564.98	417.70	503.69	657.16	404.26
1989	467.59	566.84	408.17	474.96	573.29	418.43	492.30	660.88	384.33
1990	481.74	592.44	415.32	488.66	598.99	424.65	520.61	698.68	407.57
1991	502.82	637.23	418.70	510.16	644.19	428.17	548.80	764.26	412.54
1992	510.31	657.72	414.68	516.52	662.84	423.38	567.60	806.88	412.70
1993	493.13	621.69	408.15	496.74	619.89	416.97	567.49	816.86	403.65
1994	483.10	589.23	413.17	487.05	587.05	422.77	556.79	781.58	408.32
1995	476.36	570.81	414.48	481.55	569.36	425.68	541.04	745.49	404.24
1996	478.58	571.73	417.63	484.16	572.91	427.64	538.98	724.77	415.97
1997	485.82	574.78	427.95	492.88	575.59	440.60	538.33	736.05	409.30
1998	487.30	571.54	433.12	495.84	575.12	446.23	532.62	718.08	413.27
1999	489.61	579.60	429.74	497.52	581.31	442.81	537.27	717.87	418.72
2000	484.74	577.80	421.15	494.89	581.29	436.90	523.65	707.21	400.74
2001	487.12	577.05	425.02	497.95	582.88	440.21	514.65	690.31	395.96
2002	483.64	569.01	424.95	493.30	575.02	437.63	527.90	689.21	419.57
2003	470.10	552.85	413.03	480.06	557.18	427.61	509.87	666.84	404.27
2004	469.29	548.74	414.18	478.74	553.82	426.99	509.35	662.50	407.46
2005	462.56	535.84	411.83	473.07	543.05	425.23	491.52	617.74	406.91
2006	462.14	535.72	410.08	471.25	539.95	423.20	487.43	614.56	400.20
2007	461.08	536.61	407.18	468.47	539.49	418.31	482.04	609.17	394.46
1975-2007	461.76	552.05	404.58	467.22	554.54	413.78	504.87	670.90	394.56

^a SEER 9 areas (San Francisco, Connecticut, Detroit, Hawaii, Iowa, New Mexico, Seattle, Utah, and Atlanta). Rates are per 100,000 and are age-adjusted to the 2000 US Std Population (19 age groups - Census P25-1130).
- Statistic not shown. Rate based on less than 16 cases for the time interval.

Table 2.6
All Cancer Sites (Invasive)

Age-adjusted U.S. Death^a Rates by Year, Race and Sex

Year of Death:	All Races			Whites			Blacks		
	Total	Males	Females	Total	Males	Females	Total	Males	Females
1975	199.14	258.43	160.03	196.33	254.00	158.99	235.50	320.45	174.17
1976	202.30	262.23	162.70	199.38	257.50	161.69	241.76	328.45	179.10
1977	203.02	264.23	162.94	199.67	258.78	161.61	246.38	337.95	181.60
1978	204.42	267.07	163.76	201.14	261.65	162.54	247.24	340.91	181.53
1979	204.53	268.65	163.06	201.20	263.24	161.70	248.98	344.67	182.73
1980	206.96	271.08	165.75	203.27	265.03	164.17	256.18	353.91	189.25
1981	206.40	269.78	165.90	202.64	263.27	164.55	256.77	358.65	187.47
1982	208.32	272.89	167.45	204.54	266.28	166.11	260.36	364.86	190.17
1983	209.21	274.09	168.27	205.17	267.22	166.69	263.75	369.32	193.24
1984	210.91	275.08	170.55	206.66	267.55	169.02	268.15	377.93	195.67
1985	211.35	275.68	170.96	207.25	268.25	169.58	268.06	377.82	196.31
1986	211.79	276.04	171.59	207.73	268.83	170.01	269.45	378.92	199.05
1987	211.91	276.34	171.54	207.78	268.96	169.87	271.12	383.24	199.91
1988	212.62	276.89	172.53	208.48	269.46	170.94	271.59	384.17	200.36
1989	214.30	278.50	174.25	209.96	270.25	172.88	275.87	395.28	200.87
1990	214.95	279.82	174.65	210.41	271.48	172.89	279.30	399.14	205.39
1991	215.06	279.15	175.30	210.62	271.19	173.41	278.97	395.85	207.39
1992	213.46	276.51	174.39	209.24	268.91	172.58	274.93	389.20	205.80
1993	213.45	275.89	174.55	209.16	267.89	172.82	277.09	394.76	206.29
1994	211.74	272.12	174.11	207.83	264.73	172.62	271.96	385.20	204.06
1995	209.89	268.50	173.35	206.09	261.46	171.73	269.51	379.02	204.53
1996	207.00	263.75	171.21	203.40	256.83	169.85	265.28	373.70	200.94
1997	203.55	258.13	169.00	199.94	251.58	167.35	262.14	363.18	202.53
1998	200.82	253.63	166.93	197.56	247.62	165.38	255.66	353.13	198.38
1999	200.72	252.75	167.24	197.75	247.14	165.92	253.80	349.23	197.54
2000	198.70	248.22	166.64	196.28	243.15	165.92	248.06	340.93	193.19
2001	195.89	244.07	164.33	193.58	239.40	163.45	244.03	332.33	191.92
2002	193.71	240.21	162.87	191.73	236.31	162.03	240.25	322.95	191.05
2003	190.06	234.17	160.48	188.27	230.65	159.67	234.45	311.35	188.16
2004	185.92	228.60	157.10	184.26	225.08	156.52	228.39	303.97	182.97
2005	184.23	226.42	155.52	182.82	223.41	154.99	224.37	297.16	180.42
2006	181.05	221.10	153.64	180.04	218.68	153.39	218.78	287.71	176.91
2007	178.15	217.79	150.87	177.08	215.22	150.61	216.28	284.17	175.23
1975-2007	202.70	258.68	166.46	199.70	253.10	165.31	253.62	350.41	192.83

^a US Mortality Files, National Center for Health Statistics, Centers for Disease Control and Prevention.
Rates are per 100,000 and are age-adjusted to the 2000 US Std Population (19 age groups - Census P25-1130).
- Statistic not shown. Rate based on less than 16 cases for the time interval.

Table 2.7
All Cancer Sites (Invasive)

SEER Incidence^a and U.S. Death^b Rates, Age-Adjusted and Age-Specific Rates, by Race and Sex

	All Races			Whites			Blacks		
	Total	Males	Females	Total	Males	Females	Total	Males	Females
<u>SEER Incidence</u>									
<u>Age at Diagnosis</u>									
Age-Adjusted Rates, 2003-2007									
All ages	461.6	538.9	408.0	469.2	541.5	419.6	489.8	624.0	399.1
Under 65	221.3	216.9	226.9	224.1	216.9	232.6	245.7	278.1	220.7
65 and over	2,122.3	2,764.5	1,660.2	2,162.9	2,785.0	1,711.8	2,177.0	3,015.3	1,632.5
All ages (IARC world std) ^c	312.8	353.4	282.8	317.9	354.7	291.0	338.5	424.9	276.6
Age-Specific Rates, 2003-2007									
<1	23.4	25.1	21.6	24.3	26.5	21.9	17.8	18.4	17.2
1-4	20.7	22.3	19.0	21.7	23.3	19.9	15.3	16.3	14.3
5-9	11.3	12.2	10.5	11.8	12.9	10.7	9.0	9.2	8.8
10-14	13.2	13.6	12.8	13.9	14.4	13.5	10.5	10.5	10.5
15-19	21.2	22.2	20.1	22.7	24.0	21.3	14.6	14.6	14.7
20-24	35.1	33.4	37.0	38.0	36.8	39.3	22.7	19.5	26.0
25-29	54.7	46.7	63.2	58.4	50.3	67.2	40.2	33.6	46.4
30-34	82.9	61.3	105.3	87.2	65.3	110.6	69.6	47.3	89.8
35-39	126.3	86.5	166.9	130.0	90.0	172.1	115.0	78.7	148.0
40-44	210.5	145.3	275.8	213.5	147.4	281.4	209.8	155.8	258.7
45-49	346.2	273.1	417.9	348.5	272.3	425.1	369.5	335.3	399.8
50-54	552.4	531.0	573.0	553.1	522.5	583.3	653.8	735.9	583.8
55-59	847.5	931.4	768.4	850.3	917.2	785.6	1,032.8	1,337.0	780.7
60-64	1,255.2	1,490.9	1,039.1	1,270.1	1,484.9	1,069.1	1,492.9	2,016.9	1,076.5
65-69	1,740.1	2,195.3	1,343.8	1,769.4	2,193.5	1,392.6	1,972.8	2,782.0	1,359.6
70-74	2,094.4	2,715.6	1,593.1	2,138.6	2,732.2	1,649.3	2,201.4	3,086.0	1,578.6
75-79	2,385.4	3,133.7	1,845.0	2,442.3	3,167.6	1,910.8	2,359.7	3,270.7	1,794.9
80-84	2,460.2	3,230.1	1,975.6	2,503.4	3,260.3	2,026.9	2,341.7	3,215.1	1,861.3
85+	2,177.2	2,943.7	1,812.4	2,204.0	2,987.0	1,836.2	2,070.1	2,711.5	1,800.1
<u>U.S. Mortality</u>									
<u>Age at Death</u>									
Age-Adjusted Rates, 2003-2007									
All ages	183.8	225.4	155.4	182.4	222.5	155.0	224.2	296.5	180.6
Under 65	59.8	64.1	55.8	58.0	61.8	54.4	84.4	96.6	74.7
65 and over	1,040.7	1,340.4	844.0	1,042.6	1,333.2	850.1	1,190.8	1,678.3	912.7
All ages (IARC world std) ^c	109.8	129.9	94.7	108.4	127.5	94.1	139.2	177.3	114.0
Age-Specific Rates, 2003-2007									
<1	1.8	1.8	1.8	2.0	2.0	2.0	1.3	1.2	1.3
1-4	2.4	2.6	2.2	2.4	2.6	2.2	2.4	2.7	2.1
5-9	2.5	2.7	2.3	2.6	2.8	2.4	2.3	2.5	2.2
10-14	2.4	2.5	2.2	2.4	2.5	2.3	2.5	2.7	2.3
15-19	3.3	4.0	2.7	3.4	4.1	2.7	3.2	3.6	2.8
20-24	4.7	5.4	3.9	4.6	5.4	3.8	5.2	5.9	4.4
25-29	6.7	7.0	6.3	6.5	7.0	6.0	8.5	7.9	9.1
30-34	11.5	10.4	12.5	11.1	10.3	12.0	15.2	13.1	17.1
35-39	21.3	17.8	24.8	20.7	17.6	23.8	28.3	20.9	34.9
40-44	43.8	38.8	48.7	41.9	37.4	46.5	61.7	53.5	68.9
45-49	85.9	83.9	87.9	81.6	79.5	83.6	127.8	128.6	127.1
50-54	154.2	165.0	143.8	147.2	156.2	138.4	231.0	264.3	202.8
55-59	257.4	286.6	229.9	249.7	274.7	225.6	370.8	452.8	303.4
60-64	420.0	483.1	362.4	413.3	470.3	360.2	567.7	719.5	449.2
65-69	626.3	744.8	523.0	622.9	733.6	524.4	787.1	1,022.8	612.7
70-74	878.7	1,073.4	720.9	879.8	1,063.9	727.7	1,030.8	1,390.0	785.5
75-79	1,158.9	1,474.5	930.1	1,162.7	1,466.9	938.1	1,319.4	1,847.4	1,003.9
80-84	1,425.9	1,901.5	1,130.5	1,431.2	1,897.4	1,138.9	1,575.9	2,313.6	1,187.2
85+	1,638.9	2,324.1	1,325.4	1,647.0	2,327.4	1,335.0	1,743.5	2,692.2	1,362.1

^a SEER 17 areas. Rates are per 100,000 and are age-adjusted to the 2000 US Std Population (19 age groups - Census P25-1130), unless noted.

^b US Mortality Files, National Center for Health Statistics, Centers for Disease Control and Prevention.

^c Rates are per 100,000 and are age-adjusted to the 2000 US Std Population (19 age groups - Census P25-1130), unless noted.

^d Rates are per 100,000 and are age-adjusted to the IARC world standard population.

- Statistic not shown. Rate based on less than 16 cases for the time interval.

Table 2.8
All Cancer Sites (Invasive)

5-Year Relative and Period Survival (Percent) by Race, Sex, Diagnosis Year and Age

	All Races			Whites			Blacks		
	Total	Males	Females	Total	Males	Females	Total	Males	Females
5-Year Relative Survival (Percent)									
Year of Diagnosis:									
1960-1963 ^a	-	-	-	39	-	-	27	-	-
1970-1973 ^a	-	-	-	43	-	-	31	-	-
1975-1977 ^b	50.3	42.4	57.3	51.2	43.5	58.0	39.9	32.8	47.3
1978-1980 ^b	50.3	43.8	56.4	51.3	45.1	57.0	39.6	33.3	46.6
1981-1983 ^b	51.5	46.0	56.7	52.6	47.4	57.5	39.6	34.3	45.6
1984-1986 ^b	53.6	47.8	59.0	54.8	49.3	60.0	40.8	35.5	46.5
1987-1989 ^b	56.4	51.6	61.1	57.8	53.3	62.1	43.6	38.8	48.9
1990-1992 ^b	60.7	59.3	62.3	62.3	61.1	63.5	48.1	47.1	49.2
1993-1995 ^b	62.4	61.4	63.4	63.6	62.7	64.5	53.1	54.1	51.9
1996-1998 ^b	64.6	63.9	65.3	65.8	65.1	66.4	55.7	57.7	53.4
1999-2006 ^b	67.8 ^e	67.9 ^e	67.7 ^e	69.1 ^e	69.2 ^e	69.0 ^e	59.2 ^e	62.1 ^e	55.9 ^e
5-Year Period Survival (Percent) ^{cd}									
Year of Diagnosis:									
1999-2006	66.7	66.8	66.5	67.5	67.5	67.5	58.6	61.5	55.3
5-Year Relative Survival (Percent), 1999-2006 ^c									
Age at Diagnosis:									
Ages <45	79.0	73.8	82.3	80.7	76.2	83.8	65.7	57.5	70.8
Ages 45-54	71.5	65.2	76.5	73.2	66.8	78.2	59.2	56.6	61.8
Ages 55-64	68.4	68.2	68.6	69.4	69.0	69.9	60.6	64.3	54.9
Ages 65-74	63.8	67.2	59.1	64.4	67.5	60.2	57.7	64.9	47.4
Ages 75+	53.5	58.2	49.2	54.3	58.6	50.5	43.6	51.6	36.9
Ages <65	71.8	68.4	75.0	73.2	69.7	76.4	61.3	60.7	61.9
Ages 65+	59.3	63.7	54.2	59.9	64.0	55.4	52.4	60.6	42.7

^a Based on End Results data from a series of hospital registries and one population-based registry.
^b Based on the SEER 9 areas (San Francisco, Connecticut, Detroit, Hawaii, Iowa, New Mexico, Seattle, Utah, Atlanta).
Based on follow-up of patients into 2007.
^c Based on the SEER 17 areas (San Francisco, Connecticut, Detroit, Hawaii, Iowa, New Mexico, Seattle, Utah, Atlanta, San Jose-Monterey, Los Angeles, Alaska Native Registry, Rural Georgia, California excluding SF/SJM/LA, Kentucky, Louisiana and New Jersey). California excluding SF/SJM/LA, Kentucky, Louisiana, and New Jersey contribute cases for diagnosis years 2000-2006. The remaining 13 SEER Areas contribute cases for the entire period 1999-2006. Based on follow-up of patients into 2007.
^d Period survival provides a more up-to-date estimate of survival by piecing together the most recent conditional survival estimates from several cohorts. It is computed here using three year calendar blocks (2004-2006: 0-1 year survival), (2003-2005: 1-2 year survival), (2002-2004: 2-3 year survival), (2001-2003: 3-4 year survival), (2000-2002: 4-5 years survival).
^e The difference between 1975-1977 and 1999-2006 is statistically significant (p<.05).
^f The standard error is between 5 and 10 percentage points.
^g The standard error is greater than 10 percentage points.
- Statistic could not be calculated due to fewer than 25 cases during the time period.

Table 2.9
All Cancer Sites (Invasive)

SEER^a Relative Survival (Percent)
By Year of Diagnosis

All Races, Males and Females

Survival Time	Year of Diagnosis																			
	1975- 1979	1980- 1984	1985- 1989	1990	1991	1992	1993	1994	1995	1996	1997	1998	1999	2000	2001	2002	2003	2004	2005	2006
1-year	70.1	71.6	74.0	75.8	77.3	77.9	77.3	77.1	77.2	77.7	78.4	78.7	79.3	79.7	80.2	80.4	80.1	80.6	80.8	81.3
2-year	60.6	62.0	65.2	67.4	69.3	70.5	70.1	69.7	70.0	70.9	71.5	72.1	72.9	73.4	74.1	74.5	74.0	74.5	74.7	
3-year	55.7	57.0	60.6	63.1	65.2	66.8	66.3	66.1	66.5	67.5	68.2	68.9	69.8	70.3	71.1	71.6	71.0	71.6		
4-year	52.5	53.8	57.6	60.4	62.7	64.4	64.0	63.7	64.3	65.3	66.1	66.8	67.9	68.4	69.3	69.8	69.2			
5-year	50.3	51.4	55.5	58.6	60.8	62.6	62.2	62.1	62.8	63.8	64.6	65.4	66.5	67.2	68.0	68.5				
6-year	48.6	49.7	53.9	57.1	59.3	61.2	61.0	60.9	61.6	62.7	63.5	64.3	65.4	66.2	67.1					
7-year	47.2	48.2	52.5	55.7	58.1	59.9	59.8	59.8	60.6	61.9	62.7	63.5	64.6	65.3						
8-year	46.1	47.1	51.4	54.7	56.9	58.9	58.9	59.0	59.9	61.2	62.1	62.9	63.9							
9-year	45.2	46.1	50.5	53.7	56.1	58.2	58.0	58.4	59.3	60.5	61.4	62.2								
10-year	44.4	45.3	49.7	52.9	55.4	57.4	57.3	57.7	58.7	59.9	60.9									
11-year	43.8	44.6	49.1	52.2	54.8	56.7	56.7	57.0	58.1	59.5										
12-year	43.2	44.1	48.5	51.7	54.2	56.2	56.1	56.4	57.5											
13-year	42.9	43.7	47.9	51.2	53.6	55.6	55.7	56.0												
14-year	42.6	43.3	47.5	50.7	53.1	55.1	55.2													
15-year	42.2	43.0	47.1	50.3	52.6	54.6														
16-year	42.0	42.6	46.8	49.9	52.1															
17-year	41.8	42.4	46.6	49.6																
18-year	41.7	42.2	46.5																	
19-year	41.7	42.1																		
20-year	41.6	42.0																		

^a Based on the SEER 9 areas (San Francisco, Connecticut, Detroit, Hawaii, Iowa, New Mexico, Seattle, Utah, and Atlanta).

Table 2.10
All Cancer Sites (Invasive)

SEER^a Relative Survival (Percent)
By Year of Diagnosis

All Races, Males

Year of Diagnosis

	1975- 1979	1980- 1984	1985- 1989	1990	1991	1992	1993	1994	1995	1996	1997	1998	1999	2000	2001	2002	2003	2004	2005	2006
Survival Time																				
1-year	64.6	67.6	70.7	73.8	76.4	77.6	76.7	76.2	76.0	76.9	77.6	77.4	78.7	79.2	79.7	79.8	79.5	80.2	80.4	81.2
2-year	54.0	57.1	60.9	64.7	68.1	70.0	69.3	68.3	68.5	70.0	70.7	70.9	72.0	73.0	73.6	73.9	73.5	74.3	74.3	
3-year	48.7	51.8	56.0	60.3	64.2	66.5	65.7	64.9	65.2	66.7	67.6	67.7	69.0	70.0	71.0	71.4	70.7	71.6		
4-year	45.4	48.3	52.7	57.4	61.5	64.3	63.5	62.5	63.0	64.5	65.6	65.8	67.3	68.2	69.2	69.8	69.1			
5-year	42.9	45.7	50.4	55.4	59.5	62.5	61.7	61.0	61.5	63.2	64.1	64.4	66.0	67.0	68.2	68.8				
6-year	41.0	43.8	48.6	53.7	57.8	61.0	60.6	59.7	60.3	62.1	62.9	63.4	65.1	66.1	67.4					
7-year	39.5	42.2	46.9	52.0	56.3	59.6	59.2	58.6	59.3	61.2	62.3	62.6	64.3	65.3						
8-year	38.1	40.9	45.6	50.8	55.0	58.3	58.3	57.6	58.6	60.5	61.5	61.9	63.5							
9-year	37.0	39.9	44.5	49.7	54.0	57.3	57.2	56.7	57.8	59.9	60.8	61.2								
10-year	36.0	39.0	43.5	48.6	53.1	56.2	56.3	56.0	57.1	59.2	60.4									
11-year	35.1	38.2	42.7	47.6	52.1	55.4	55.5	55.2	56.4	58.5										
12-year	34.4	37.5	41.8	46.9	51.4	54.6	54.7	54.4	55.6											
13-year	33.9	36.9	41.0	46.3	50.6	53.8	53.9	53.9												
14-year	33.4	36.4	40.4	45.6	49.9	53.0	53.3													
15-year	32.9	36.0	39.8	44.9	48.9	52.2														
16-year	32.4	35.5	39.2	44.2	48.1															
17-year	32.1	35.1	38.9	43.7																
18-year	31.8	34.9	38.5																	
19-year	31.7	34.7																		
20-year	31.6	34.6																		

^a Based on the SEER 9 areas (San Francisco, Connecticut, Detroit, Hawaii, Iowa, New Mexico, Seattle, Utah, and Atlanta).

Table 2.11
All Cancer Sites (Invasive)

SEER^a Relative Survival (Percent)
By Year of Diagnosis

All Races, Females

Year of Diagnosis

	1975- 1979	1980- 1984	1985- 1989	1990	1991	1992	1993	1994	1995	1996	1997	1998	1999	2000	2001	2002	2003	2004	2005	2006
Survival Time																				
1-year	75.4	75.7	77.5	77.9	78.5	78.4	78.2	78.2	78.6	78.6	79.2	79.9	80.0	80.2	80.6	81.0	80.7	80.9	81.2	81.4
2-year	66.8	67.0	69.4	70.3	70.7	71.0	70.9	71.2	71.5	71.8	72.4	73.3	73.8	73.8	74.7	75.1	74.6	74.8	75.1	
3-year	62.2	62.2	65.2	66.1	66.5	67.1	67.0	67.5	67.9	68.3	68.9	70.0	70.5	70.7	71.2	71.8	71.4	71.7		
4-year	59.1	59.1	62.5	63.6	64.1	64.5	64.5	65.0	65.6	66.1	66.7	67.9	68.5	68.7	69.3	69.7	69.3			
5-year	57.0	56.8	60.5	62.0	62.3	62.7	62.8	63.4	64.0	64.5	65.2	66.3	66.9	67.4	67.8	68.2				
6-year	55.3	55.1	59.0	60.5	61.0	61.5	61.6	62.1	62.9	63.3	64.0	65.2	65.8	66.4	66.9					
7-year	54.0	53.7	57.7	59.4	59.9	60.3	60.5	61.1	61.9	62.7	63.2	64.4	65.0	65.5						
8-year	53.0	52.6	56.8	58.5	59.0	59.7	59.5	60.6	61.3	61.9	62.6	63.8	64.3							
9-year	52.1	51.7	56.0	57.7	58.3	59.2	58.9	60.0	60.7	61.2	61.9	63.1								
10-year	51.4	50.8	55.3	57.0	57.8	58.7	58.4	59.4	60.3	60.7	61.4									
11-year	50.7	50.1	54.7	56.5	57.5	58.2	57.9	58.8	59.7	60.5										
12-year	50.2	49.6	54.2	56.1	57.0	57.8	57.6	58.4	59.4											
13-year	49.9	49.2	53.8	55.7	56.6	57.4	57.4	58.2												
14-year	49.5	48.8	53.5	55.3	56.3	57.3	57.1													
15-year	49.1	48.5	53.2	55.1	56.0	57.0														
16-year	48.9	48.1	53.0	54.9	55.7															
17-year	48.7	47.8	52.8	54.7																
18-year	48.6	47.7	52.8																	
19-year	48.4	47.5																		
20-year	48.3	47.4																		

^a Based on the SEER 9 areas (San Francisco, Connecticut, Detroit, Hawaii, Iowa, New Mexico, Seattle, Utah, and Atlanta).

Table 2.12
All Cancer Sites (Invasive)

Risk of Being Diagnosed With Cancer in 10, 20 and 30 Years,
Lifetime Risk of Being Diagnosed with Cancer Given Alive and Cancer-Free at Current Age, and
Lifetime Risk of Dying from Cancer Given Alive at Current Age
Both Sexes, 2005-2007 By Race/Ethnicity

Race/ Ethnicity	Current Age	Risk of Being Diagnosed with Cancer				Risk of Dying from Cancer	Race/ Ethnicity	Current Age	Risk of Being Diagnosed with Cancer				Risk of Dying from Cancer
		+10 yrs	+20 yrs	+30 yrs	Ever				+10 yrs	+20 yrs	+30 yrs	Ever	
All Races	0	0.17	0.34	0.78	40.77	21.15	Asian/ Pacific Islander	0	0.14	0.27	0.58	34.98	18.24
	10	0.18	0.62	1.63	41.15	21.42		10	0.13	0.44	1.19	35.18	18.37
	20	0.45	1.46	4.03	41.20	21.48		20	0.31	1.07	3.11	35.18	18.39
	30	1.03	3.63	9.59	41.30	21.64		30	0.77	2.82	6.99	35.14	18.43
	40	2.65	8.75	19.73	41.13	21.76		40	2.08	6.30	13.81	34.79	18.40
	50	6.39	17.92	30.71	40.38	21.73		50	4.35	12.09	22.34	33.70	18.18
	60	12.85	27.09	35.68	37.87	21.02		60	8.25	19.19	27.67	31.30	17.48
	70	17.89	28.66	-	31.41	18.63		70	12.53	22.25	-	26.41	15.91
80	16.82	-	-	21.12	14.07	80	12.88	-	-	18.39	12.81		
White	0	0.18	0.36	0.83	41.23	21.33	American Indian/ Alaska Native ^a	0	0.12	0.24	0.55	27.78	16.55
	10	0.19	0.66	1.71	41.55	21.56		10	0.12	0.43	1.24	28.10	16.80
	20	0.48	1.53	4.11	41.59	21.61		20	0.32	1.13	2.90	28.22	16.92
	30	1.07	3.68	9.66	41.65	21.75		30	0.83	2.64	6.42	28.46	17.19
	40	2.67	8.78	19.90	41.44	21.86		40	1.87	5.78	12.95	28.57	17.57
	50	6.40	18.07	31.06	40.66	21.82		50	4.14	11.74	20.79	28.26	17.89
	60	12.96	27.41	35.98	38.08	21.10		60	8.41	18.43	24.68	26.71	17.69
	70	18.11	28.85	-	31.48	18.67		70	12.28	19.94	-	22.42	15.97
80	16.84	-	-	20.96	14.03	80	11.29	-	-	14.95	12.14		
Black	0	0.12	0.25	0.55	36.46	21.10	Hispanic ^b	0	0.15	0.32	0.67	35.58	17.15
	10	0.12	0.44	1.30	37.24	21.61		10	0.17	0.52	1.26	35.85	17.32
	20	0.32	1.18	3.78	37.38	21.71		20	0.36	1.10	2.97	35.87	17.36
	30	0.88	3.53	10.22	37.75	21.97		30	0.76	2.65	7.05	35.93	17.45
	40	2.73	9.62	21.02	37.98	22.24		40	1.92	6.40	14.95	35.75	17.50
	50	7.36	19.56	30.44	37.68	22.37		50	4.64	13.52	24.39	35.09	17.42
	60	14.29	27.05	33.70	35.55	21.73		60	9.64	21.45	29.61	33.08	16.89
	70	17.44	26.52	-	29.05	19.38		70	14.11	23.85	-	28.00	15.31
80	15.54	-	-	19.87	15.20	80	13.88	-	-	19.78	12.14		

Devcan Version 6.5.0, June 2010, National Cancer Institute (<http://srab.cancer.gov/devcan/>).

Source: Incidence data are from the SEER 17 areas (San Francisco, Connecticut, Detroit, Hawaii, Iowa, New Mexico, Seattle, Utah, Atlanta, San Jose-Monterey, Los Angeles, Alaska Native Registry, Rural Georgia, California excluding SF/SJM/LA, Kentucky, Louisiana and New Jersey). Mortality data are from the NCHS public use data file for the total US.

^a Underlying incidence and mortality data for American Indian/Alaska Native are based on the CHSDA (Contract Health Service Delivery Area) counties.

^b Hispanic is not mutually exclusive from whites, blacks, Asian/Pacific Islanders, and American Indians/Alaska Natives.

Underlying incidence data for Hispanics are based on NHIA and exclude cases from the Alaska Native Registry.

Underlying mortality data for Hispanics exclude deaths from the District of Columbia, Minnesota, New Hampshire and North Dakota.

- Statistic could not be calculated.

A percent of 0.00 represents a value that is below 0.005.

Table 2.13
All Cancer Sites (Invasive)

Risk of Being Diagnosed With Cancer in 10, 20 and 30 Years,
Lifetime Risk of Being Diagnosed with Cancer Given Alive and Cancer-Free at Current Age, and
Lifetime Risk of Dying from Cancer Given Alive at Current Age
Males, 2005-2007 By Race/Ethnicity

Race/ Ethnicity	Current Age	Risk of Being Diagnosed with Cancer				Risk of Dying from Cancer	Race/ Ethnicity	Current Age	Risk of Being Diagnosed with Cancer				Risk of Dying from Cancer
		+10 yrs	+20 yrs	+30 yrs	Ever				+10 yrs	+20 yrs	+30 yrs	Ever	
All Races	0	0.18	0.36	0.75	44.29	23.20	Asian/ Pacific Islander	0	0.15	0.29	0.52	37.80	20.53
	10	0.18	0.57	1.28	44.77	23.53		10	0.13	0.37	0.82	38.06	20.69
	20	0.40	1.11	3.11	44.90	23.63		20	0.24	0.69	2.00	38.09	20.73
	30	0.72	2.76	9.04	45.26	23.90		30	0.45	1.78	5.57	38.19	20.80
	40	2.08	8.50	21.67	45.54	24.18		40	1.34	5.17	13.99	38.14	20.83
	50	6.75	20.59	35.81	45.69	24.44		50	3.93	12.99	25.75	37.76	20.73
	60	15.71	32.99	42.20	44.19	24.11		60	9.70	23.37	32.95	36.23	20.19
	70	23.02	35.30	-	37.95	22.04		70	16.18	27.52	-	31.41	18.69
80	21.77	-	-	26.47	17.65	80	16.32	-	-	21.92	15.35		
White	0	0.19	0.38	0.80	44.35	23.32	American Indian/ Alaska Native ^a	0	0.12	0.23	0.54	27.25	17.58
	10	0.20	0.62	1.36	44.75	23.60		10	0.11	0.43	1.03	27.61	17.89
	20	0.43	1.17	3.17	44.86	23.69		20	0.32	0.93	2.18	27.81	18.06
	30	0.76	2.79	8.99	45.16	23.94		30	0.63	1.91	5.76	28.26	18.49
	40	2.08	8.41	21.54	45.38	24.19		40	1.34	5.35	13.09	28.78	19.11
	50	6.65	20.44	35.73	45.47	24.42		50	4.27	12.52	22.35	29.26	19.83
	60	15.58	32.87	41.98	43.87	24.06		60	9.33	20.43	26.52	28.25	20.12
	70	22.91	34.98	-	37.48	21.95		70	14.08	21.80	-	23.99	18.86
80	21.38	-	-	25.83	17.48	80	12.14	-	-	15.59	15.64		
Black	0	0.13	0.25	0.49	40.35	23.49	Hispanic ^b	0	0.16	0.34	0.66	38.77	19.54
	10	0.12	0.37	0.97	41.32	24.12		10	0.18	0.50	0.98	39.11	19.76
	20	0.26	0.86	3.13	41.60	24.29		20	0.32	0.80	2.12	39.21	19.84
	30	0.61	2.95	11.00	42.42	24.76		30	0.48	1.82	6.19	39.49	20.04
	40	2.42	10.76	25.53	43.31	25.33		40	1.36	5.81	16.09	39.67	20.20
	50	9.00	24.94	37.63	44.12	25.97		50	4.62	15.30	28.65	39.81	20.37
	60	19.59	35.19	41.73	43.17	26.06		60	11.77	26.47	35.57	38.77	20.17
	70	24.04	34.12	-	36.34	24.39		70	18.43	29.83	-	33.85	18.81
80	20.66	-	-	25.22	20.93	80	17.95	-	-	24.27	15.75		

Devcan Version 6.5.0, June 2010, National Cancer Institute (<http://srab.cancer.gov/devcan/>).

Source: Incidence data are from the SEER 17 areas (San Francisco, Connecticut, Detroit, Hawaii, Iowa, New Mexico, Seattle, Utah, Atlanta, San Jose-Monterey, Los Angeles, Alaska Native Registry, Rural Georgia, California excluding SF/SJM/LA, Kentucky, Louisiana and New Jersey). Mortality data are from the NCHS public use data file for the total US.

^a Underlying incidence and mortality data for American Indian/Alaska Native are based on the CHSDA (Contract Health Service Delivery Area) counties.

^b Hispanic is not mutually exclusive from whites, blacks, Asian/Pacific Islanders, and American Indians/Alaska Natives.

Underlying incidence data for Hispanics are based on NHIA and exclude cases from the Alaska Native Registry.

Underlying mortality data for Hispanics exclude deaths from the District of Columbia, Minnesota, New Hampshire and North Dakota.

- Statistic could not be calculated.

A percent of 0.00 represents a value that is below 0.005.

Table 2.14
All Cancer Sites (Invasive)

Risk of Being Diagnosed With Cancer in 10, 20 and 30 Years,
Lifetime Risk of Being Diagnosed with Cancer Given Alive and Cancer-Free at Current Age, and
Lifetime Risk of Dying from Cancer Given Alive at Current Age
Females, 2005-2007 By Race/Ethnicity

Race/ Ethnicity	Current Age	Risk of Being Diagnosed with Cancer				Risk of Dying from Cancer	Race/ Ethnicity	Current Age	Risk of Being Diagnosed with Cancer				Risk of Dying from Cancer
		+10 yrs	+20 yrs	+30 yrs	Ever				+10 yrs	+20 yrs	+30 yrs	Ever	
All Races	0	0.15	0.32	0.82	37.76	19.58	Asian/ Pacific Islander	0	0.13	0.26	0.63	32.78	16.36
	10	0.17	0.67	1.99	38.06	19.81		10	0.13	0.50	1.55	32.94	16.47
	20	0.50	1.83	4.97	38.04	19.83		20	0.37	1.43	4.14	32.90	16.48
	30	1.34	4.51	10.17	37.89	19.88		30	1.06	3.79	8.29	32.73	16.48
	40	3.24	9.01	17.92	37.29	19.88		40	2.76	7.33	13.70	32.10	16.40
	50	6.05	15.39	26.04	35.69	19.62		50	4.72	11.30	19.54	30.33	16.09
	60	10.22	21.89	30.04	32.45	18.65		60	6.99	15.74	23.31	27.21	15.28
	70	13.90	23.62	-	26.49	16.21		70	9.75	18.20	-	22.54	13.75
80	13.85	-	-	17.93	11.97	80	10.54	-	-	15.97	10.97		
White	0	0.16	0.34	0.86	38.59	19.80	American Indian/ Alaska Native ^a	0	0.13	0.25	0.57	28.41	15.89
	10	0.18	0.71	2.08	38.85	19.99		10	0.13	0.44	1.46	28.66	16.10
	20	0.53	1.91	5.10	38.82	20.01		20	0.32	1.34	3.63	28.70	16.18
	30	1.39	4.61	10.38	38.65	20.06		30	1.04	3.35	7.07	28.72	16.31
	40	3.29	9.17	18.35	38.02	20.05		40	2.37	6.19	12.83	28.41	16.49
	50	6.16	15.78	26.74	36.37	19.78		50	4.02	11.00	19.35	27.38	16.49
	60	10.52	22.51	30.73	33.04	18.80		60	7.58	16.65	23.09	25.38	15.97
	70	14.30	24.11	-	26.87	16.32		70	10.79	18.45	-	21.17	14.05
80	14.06	-	-	18.01	11.99	80	10.73	-	-	14.54	10.16		
Black	0	0.12	0.24	0.61	33.01	19.26	Hispanic ^b	0	0.14	0.29	0.68	33.19	15.43
	10	0.13	0.50	1.61	33.64	19.68		10	0.15	0.55	1.60	33.41	15.56
	20	0.38	1.49	4.40	33.65	19.71		20	0.40	1.45	3.92	33.37	15.57
	30	1.13	4.07	9.54	33.65	19.80		30	1.07	3.55	8.01	33.21	15.58
	40	3.01	8.63	17.06	33.32	19.85		40	2.53	7.05	14.06	32.64	15.51
	50	5.95	14.90	24.23	32.14	19.61		50	4.68	11.94	20.73	31.18	15.23
	60	10.08	20.60	27.34	29.52	18.60		60	7.79	17.21	24.66	28.42	14.49
	70	13.16	21.59	-	24.32	16.18		70	10.81	19.36	-	23.67	12.90
80	12.94	-	-	17.14	12.32	80	11.32	-	-	17.03	10.01		

Devcan Version 6.5.0, June 2010, National Cancer Institute (<http://srab.cancer.gov/devcan/>).

Source: Incidence data are from the SEER 17 areas (San Francisco, Connecticut, Detroit, Hawaii, Iowa, New Mexico, Seattle, Utah, Atlanta, San Jose-Monterey, Los Angeles, Alaska Native Registry, Rural Georgia, California excluding SF/SJM/LA, Kentucky, Louisiana and New Jersey). Mortality data are from the NCHS public use data file for the total US.

^a Underlying incidence and mortality data for American Indian/Alaska Native are based on the CHSDA (Contract Health Service Delivery Area) counties.

^b Hispanic is not mutually exclusive from whites, blacks, Asian/Pacific Islanders, and American Indians/Alaska Natives.

Underlying incidence data for Hispanics are based on NHIA and exclude cases from the Alaska Native Registry.

Underlying mortality data for Hispanics exclude deaths from the District of Columbia, Minnesota, New Hampshire and North Dakota.

- Statistic could not be calculated.

A percent of 0.00 represents a value that is below 0.005.

Table 2.15
All Cancer Sites (Invasive)

SEER Incidence and U.S. Mortality
Age-Adjusted Rates and Trends^a
By Race/Ethnicity and Sex

SEER Incidence	SEER 17 Areas ^b			SEER 13 Areas ^b			SEER 9 Areas ^b		
	Rate 2003-2007			Trend 1998-2007 ^c			Trend 1998-2007 ^d		
	Rate per 100,000 persons			AAPC (%)			AAPC (%)		
RACE/ETHNICITY	Total	Males	Females	Total	Males	Females	Total	Males	Females
All Races	461.6	538.9	408.0	-0.8*	-1.1*	-0.8*	-0.7*	-0.9*	-0.7*
White	469.2	541.5	419.6	-0.8*	-1.0*	-0.8*	-0.7*	-0.9*	-0.7*
White Hispanic ^e	347.8	399.6	315.1	-1.2*	-1.9*	-0.4*	-	-	-
White Non-Hispanic ^e	489.8	564.3	438.0	-0.6*	-0.8*	-0.6*	-	-	-
Black	489.8	624.0	399.1	-1.4*	-2.3*	-0.2	-1.0*	-1.8*	-0.1
Asian/Pacific Islander	310.8	346.5	288.9	-0.6*	-1.1*	0.0	-	-	-
Amer Ind/Alaska Nat ^f	317.7	335.8	306.3	-0.1	-1.0*	0.7*	-	-	-
Hispanic ^e	342.5	394.8	309.2	-1.1*	-1.7*	-0.7*	-	-	-
<u>U.S. Mortality^g</u>									
	Rate 2003-2007			Trend 1998-2007 ^h					
	Rate per 100,000 persons			AAPC (%)					
RACE/ETHNICITY	Total	Males	Females	Total	Males	Females			
All Races	183.8	225.4	155.4	-1.4*	-1.8*	-1.2*			
White	182.4	222.5	155.0	-1.3*	-1.6*	-1.1*			
White Hispanic ^e	126.3	155.5	106.0	-1.7*	-2.4*	-1.3*			
White Non-Hispanic ^e	186.7	227.5	158.8	-1.2*	-1.4*	-1.0*			
Black	224.2	296.5	180.6	-2.0*	-2.5*	-1.4*			
Asian/Pacific Islander	110.8	134.2	94.1	-1.6*	-2.0*	-1.1*			
Amer Ind/Alaska Nat									
Total U.S.	123.2	145.1	107.7	-1.6*	-2.4*	-0.7*			
CHSDA Counties	156.7	183.7	138.0	-0.2	-0.5*	0.0			
Non-CHSDA Counties	81.8	98.3	69.6	-3.5*	-4.7	-1.3*			
Hispanic ^e	122.1	150.5	102.3	-1.8*	-2.5*	-1.3*			

The AAPC is the Average Annual Percent Change over the time interval. The AAPCs are calculated by the Joinpoint Regression Program Version 3.4.3, April 2010, National Cancer Institute.

- Statistic not shown. Rate based on less than 16 cases for the time interval.

Trend based on less than 10 cases for at least one year within the time interval.

a Rates are age-adjusted to the 2000 US Std Population (19 age groups - Census P25-1130). Trends

are based on rates age-adjusted to the 2000 US Std Population (19 age groups - Census P25-1130).

b The SEER 9 areas are San Francisco, Connecticut, Detroit, Hawaii, Iowa, New Mexico, Seattle, Utah and Atlanta.

The SEER 13 areas comprise the SEER 9 areas plus San Jose-Monterey, Los Angeles, the Alaska Native Registry and Rural Georgia.

The SEER 17 areas comprise the SEER 13 areas plus California excluding SF/SJM/LA, Kentucky, Louisiana and New Jersey.

c The 1998-2007 AAPC estimates are based on a Joinpoint analysis with up to 2 Joinpoints over diagnosis years 1992-2007.

d The 1998-2007 AAPC estimates are based on a Joinpoint analysis with up to 4 Joinpoints over diagnosis years 1975-2007.

e Hispanic and Non-Hispanic are not mutually exclusive from whites, blacks, Asian/Pacific Islanders, and American Indians/Alaska Natives. Incidence data for Hispanics and Non-Hispanics are based on NHIA and exclude cases from the Alaska Native Registry. The 2003-2007 Hispanic and Non-Hispanic death rates exclude deaths from the District of Columbia, New Hampshire, and North Dakota. The 1998-2007 Hispanic and Non-Hispanic mortality trends exclude deaths from Connecticut, the District of Columbia, Maine, Maryland, Minnesota, New Hampshire, New York, North Dakota, Oklahoma and Vermont.

f Incidence data for American Indian/Alaska Native are based on the CHSDA(Contract Health Service Delivery Area) counties.

g US Mortality Files, National Center for Health Statistics, CDC.

h The 1998-2007 mortality AAPCs are based on a Joinpoint analysis using years of death 1992-2007.

* The APC is significantly different from zero (p<.05).

Table 2.16
All Cancer Sites (Invasive)

Age-Adjusted SEER Incidence Rates^a
By Registry, Race and Sex

	All Races			Whites			Blacks		
	Total	Males	Females	Total	Males	Females	Total	Males	Females
<u>SEER Incidence Rates^a, 2003-2007</u>									
Atlanta & Rural Georgia	435.60	524.77	376.41	434.01	506.23	388.27	461.80	607.26	371.57
Atlanta	433.93	520.58	377.01	431.16	500.52	388.11	464.69	610.18	375.07
Rural Georgia	474.55	608.60	374.02	488.09	606.51	395.54	448.16	612.29	339.39
California	434.25	501.35	387.78	445.35	508.87	401.64	465.60	569.22	391.41
Greater Bay Area	430.69	497.32	384.80	456.71	523.80	410.47	469.82	569.91	397.86
San Francisco-Oakland	433.20	498.83	387.71	457.63	521.16	413.62	475.12	573.47	405.22
San Jose-Monterey	426.17	495.21	379.03	455.32	529.22	404.80	436.60	563.43	334.96
Los Angeles	415.28	480.41	372.36	420.27	477.28	383.77	466.68	570.90	396.35
Greater California	444.85	512.81	396.63	452.44	517.30	406.66	462.88	567.98	380.94
Connecticut	503.79	581.91	451.81	507.09	580.61	459.24	475.98	606.30	385.91
Detroit	513.90	617.17	444.45	504.10	589.44	449.26	550.00	714.07	441.00
Hawaii	424.62	486.56	381.07	524.57	618.80	447.55	320.81	407.11	210.75
Iowa	472.70	547.14	422.76	468.01	538.86	421.03	518.75	656.25	409.54
Kentucky	508.92	600.78	446.96	505.82	595.52	445.38	530.54	658.49	447.18
Louisiana	487.66	607.09	402.76	481.91	587.67	405.95	515.59	686.48	403.56
New Jersey	502.05	588.22	445.31	508.19	585.57	458.40	485.40	623.66	396.65
New Mexico	406.21	466.43	359.26	421.54	483.31	372.96	258.36	283.89	231.43
Seattle-Puget Sound	496.74	569.21	444.79	509.34	580.03	458.39	502.79	623.92	400.16
Utah	399.78	476.54	338.58	405.29	482.85	343.33	300.99	375.65	228.55
9 SEER Areas ^b	464.90	541.72	411.14	474.16	546.46	424.12	495.53	632.95	402.50
11 SEER Areas ^b	451.42	525.39	400.37	461.62	531.14	414.19	487.26	615.26	400.31
13 SEER Areas ^b	451.60	525.66	400.47	461.71	531.38	414.14	486.53	615.01	399.31
17 SEER Areas ^b	461.56	538.88	408.02	469.16	541.48	419.57	489.82	624.02	399.09

^a Rates are per 100,000 and are age-adjusted to the 2000 US Std Population (19 age groups - Census P25-1130)

^b The SEER 9 areas are San Francisco, Connecticut, Detroit, Hawaii, Iowa, New Mexico, Seattle, Utah and Atlanta.

The SEER 11 areas comprise the SEER 9 areas plus San Jose-Monterey and Los Angeles.

The SEER 13 areas comprise the SEER 11 areas plus the Alaska Native Registry and Rural Georgia.

The SEER 17 areas comprise the SEER 13 areas plus California excluding SF/SJM/LA, Kentucky, Louisiana and New Jersey.

- Statistic not shown. Rate based on less than 16 cases for the time interval.

Table 2.17
All Cancer Sites (Invasive)

Age-Adjusted SEER Death Rates^a
By Registry, Race and Sex

	All Races			Whites			Blacks		
	Total	Males	Females	Total	Males	Females	Total	Males	Females
<u>SEER Death Rates^a, 2003-2007</u>									
Atlanta & Rural Georgia	167.08	206.14	144.26	155.23	188.44	135.73	203.44	270.74	167.49
Atlanta	165.33	203.05	143.68	153.69	185.89	135.27	201.92	267.11	167.45
Rural Georgia	202.72	265.40	158.74	186.97	238.93	146.83	236.45	333.82	179.36
California	166.86	198.69	145.18	171.17	202.61	149.84	221.97	277.25	187.00
Greater Bay Area	158.55	186.56	140.45	165.41	192.50	148.44	227.40	275.35	198.13
San Francisco-Oakland	162.45	190.80	144.15	167.90	194.64	151.01	232.57	278.45	204.82
San Jose-Monterey	150.88	178.40	133.02	161.08	189.05	143.82	197.57	270.72	144.79
Los Angeles	160.92	191.29	140.89	161.43	189.49	143.26	223.30	282.69	186.74
Greater California	172.77	206.56	149.06	176.90	210.94	153.04	217.21	272.63	179.85
Connecticut	179.34	218.19	154.74	179.57	217.79	155.55	193.65	248.18	159.76
Detroit	192.68	233.04	167.07	184.33	221.59	160.61	231.92	292.61	194.27
Hawaii	150.77	187.27	122.58	181.94	221.84	151.73	93.74	125.45	60.39
Iowa	182.07	225.36	153.32	181.92	224.86	153.44	245.60	331.76	188.39
Kentucky	216.54	275.03	177.55	215.31	273.26	176.43	252.53	329.15	206.29
Louisiana	211.47	270.69	171.55	197.86	249.63	162.41	257.53	349.99	199.68
New Jersey	186.07	222.48	163.24	187.27	223.09	164.64	215.82	273.36	182.88
New Mexico	162.18	194.76	137.97	166.25	199.34	141.56	152.75	194.73	117.31
Seattle-Puget Sound	179.00	211.47	156.64	181.85	213.91	159.84	210.16	251.03	177.31
Utah	135.75	161.69	116.33	136.22	162.07	116.89	150.84	199.49	111.38
9 SEER Areas ^b	172.00	207.04	148.62	172.89	207.21	150.14	215.46	272.17	180.88
11 SEER Areas ^b	168.36	201.95	146.03	169.92	202.61	148.41	217.06	274.65	181.79
13 SEER Areas ^b	168.59	202.28	146.14	169.99	202.73	148.38	217.09	275.24	181.48
17 SEER Areas ^b	177.14	213.90	152.41	178.53	214.47	154.38	225.05	289.37	185.49
Total U.S.	183.77	225.44	155.43	182.40	222.46	154.96	224.23	296.52	180.58

^a US Mortality Files, National Center for Health Statistics, Centers for Disease Control and Prevention. Rates are per 100,000 and are age-adjusted to the 2000 US Std Population (19 age groups - Census P25-1130).

^b The SEER 9 areas are San Francisco, Connecticut, Detroit, Hawaii, Iowa, New Mexico, Seattle, Utah and Atlanta. The SEER 11 areas comprise the SEER 9 areas plus San Jose-Monterey and Los Angeles. The SEER 13 areas comprise the SEER 11 areas plus the Alaska Native Registry and Rural Georgia. The SEER 17 areas comprise the SEER 13 areas plus California excluding SF/SJM/LA, Kentucky, Louisiana and New Jersey.

- Statistic not shown. Rate based on less than 16 cases for the time interval.

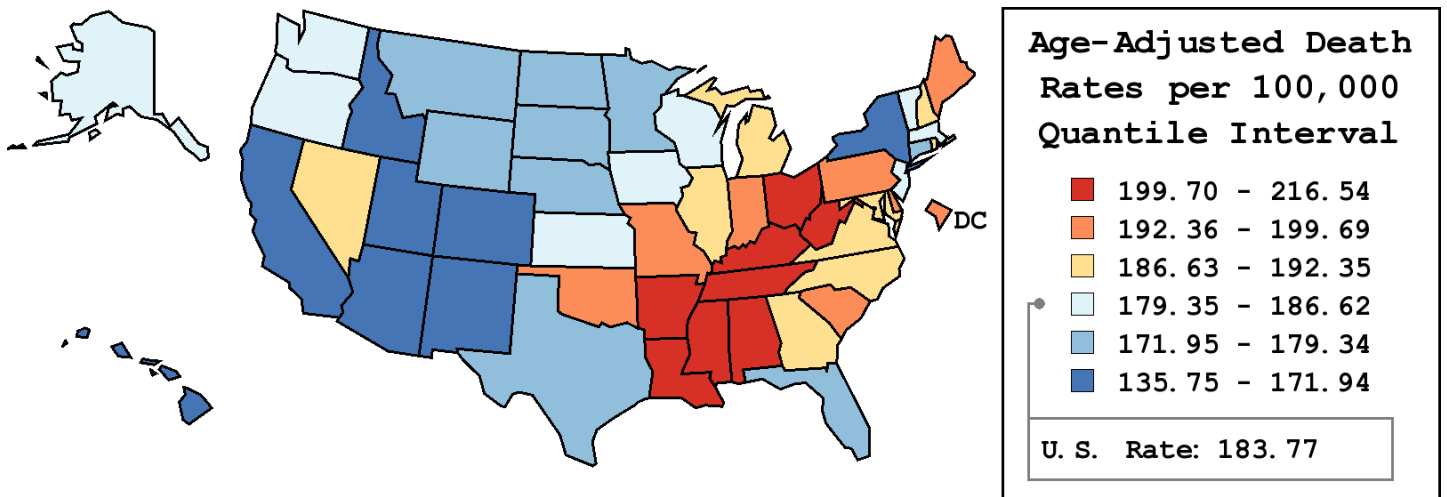
Table 2.18
All Cancer Sites (Invasive)

Age-Adjusted Cancer Death^a Rates by State, All Races, 2003-2007

Males and Females

State	Rate	SE	Rank	PD
TOTAL U.S.	183.77	0.11		
High Five States				
Kentucky	216.54 ^b	1.00	(01)	17.83 ^c
Louisiana	211.47 ^b	0.99	(02)	15.07 ^c
West Virginia	209.83 ^b	1.38	(03)	14.18 ^c
Mississippi	207.73 ^b	1.20	(04)	13.04 ^c
Tennessee	206.04 ^b	0.82	(05)	12.12 ^c
Low Five States				
New Mexico	162.18 ^b	1.30	(47)	-11.75 ^c
Colorado	159.83 ^b	0.90	(48)	-13.03 ^c
Arizona	159.58 ^b	0.72	(49)	-13.17 ^c
Hawaii	150.77 ^b	1.46	(50)	-17.96 ^c
Utah	135.75 ^b	1.22	(51)	-26.13 ^c

State	Rate	SE	Rank	PD	State	Rate	SE	Rank	PD
Alabama	201.52 ^b	0.91	(07)	9.66 ^c	Montana	179.27	1.85	(36)	-2.45
Alaska	180.85	3.15	(33)	-1.59	Nebraska	176.49 ^b	1.37	(39)	-3.96
Arizona	159.58 ^b	0.72	(49)	-13.17 ^c	Nevada	189.10 ^b	1.32	(20)	2.90
Arkansas	202.63 ^b	1.15	(06)	10.27 ^c	New Hampshire	187.81	1.68	(23)	2.20
California	166.86 ^b	0.32	(46)	-9.20 ^c	New Jersey	186.07 ^b	0.63	(27)	1.25
Colorado	159.83 ^b	0.90	(48)	-13.03 ^c	New Mexico	162.18 ^b	1.30	(47)	-11.75 ^c
Connecticut	179.34 ^b	0.96	(35)	-2.41	New York	171.94 ^b	0.41	(44)	-6.44 ^c
Delaware	198.42 ^b	2.10	(12)	7.97 ^c	North Carolina	192.35 ^b	0.67	(17)	4.67
D.C.	198.72 ^b	2.63	(11)	8.14 ^c	North Dakota	173.31 ^b	2.18	(43)	-5.69 ^c
Florida	174.08 ^b	0.39	(41)	-5.28 ^c	Ohio	200.16 ^b	0.57	(08)	8.92 ^c
Georgia	187.11 ^b	0.71	(25)	1.82	Oklahoma	196.94 ^b	1.02	(14)	7.16 ^c
Hawaii	150.77 ^b	1.46	(50)	-17.96 ^c	Oregon	185.78	0.98	(28)	1.09
Idaho	170.43 ^b	1.59	(45)	-7.26 ^c	Pennsylvania	193.81 ^b	0.51	(16)	5.46 ^c
Illinois	191.33 ^b	0.55	(18)	4.12	Rhode Island	187.47	1.77	(24)	2.02
Indiana	199.40 ^b	0.79	(10)	8.51 ^c	South Carolina	194.15 ^b	0.94	(15)	5.65 ^c
Iowa	182.07	1.03	(30)	-0.93	South Dakota	176.73	2.00	(38)	-3.83
Kansas	182.71	1.13	(29)	-0.58	Tennessee	206.04 ^b	0.82	(05)	12.12 ^c
Kentucky	216.54 ^b	1.00	(01)	17.83 ^c	Texas	177.54 ^b	0.43	(37)	-3.39
Louisiana	211.47 ^b	0.99	(02)	15.07 ^c	Utah	135.75 ^b	1.22	(51)	-26.13 ^c
Maine	199.69 ^b	1.60	(09)	8.66 ^c	Vermont	179.74	2.30	(34)	-2.19
Maryland	188.81 ^b	0.84	(21)	2.74	Virginia	188.63 ^b	0.72	(22)	2.64
Massachusetts	186.62 ^b	0.73	(26)	1.55	Washington	181.21	0.77	(32)	-1.39
Michigan	190.99 ^b	0.61	(19)	3.93	West Virginia	209.83 ^b	1.38	(03)	14.18 ^c
Minnesota	173.68 ^b	0.82	(42)	-5.49 ^c	Wisconsin	182.05	0.79	(31)	-0.94
Mississippi	207.73 ^b	1.20	(04)	13.04 ^c	Wyoming	176.28	2.63	(40)	-4.08
Missouri	197.47 ^b	0.80	(13)	7.45 ^c					



^a US Mortality Files, National Center for Health Statistics, Centers for Disease Control and Prevention. Rates are per 100,000 and are age-adjusted to the 2000 US Std Population (19 age groups - Census P25-1130).
^b Difference between state rate and total U.S. rate is statistically significant ($p \leq .0002$).
^c Absolute percent difference between state rate and total U.S. rate is 5% or more.
SE Standard error of the rate.
PD Percent difference between state rate and total U.S. rate.

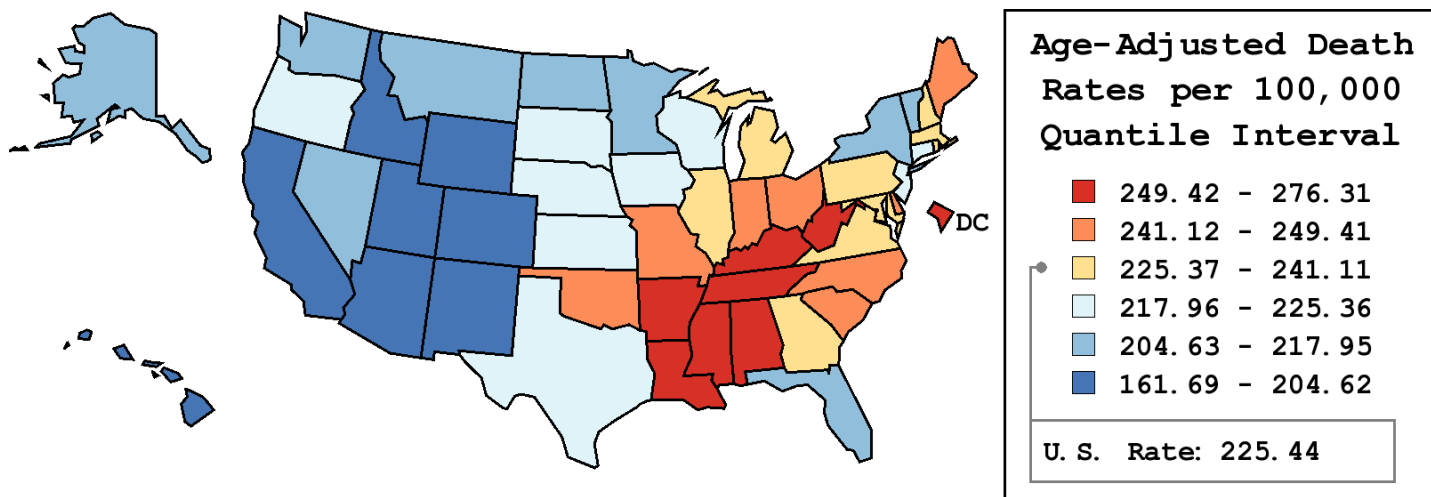
Table 2.19
All Cancer Sites (Invasive)

Age-Adjusted Cancer Death^a Rates by State, All Races, 2003-2007

Males

State	Rate	SE	Rank	PD
TOTAL U.S.	225.44	0.19		
High Five States				
Mississippi	276.31 ^b	2.18	(01)	22.57 ^c
Kentucky	275.03 ^b	1.78	(02)	22.00 ^c
Louisiana	270.69 ^b	1.77	(03)	20.07 ^c
Tennessee	263.99 ^b	1.46	(04)	17.10 ^c
Alabama	263.80 ^b	1.64	(05)	17.02 ^c
Low Five States				
New Mexico	194.76 ^b	2.16	(47)	-13.61 ^c
Arizona	190.61 ^b	1.18	(48)	-15.45 ^c
Colorado	190.61 ^b	1.54	(49)	-15.45 ^c
Hawaii	187.27 ^b	2.44	(50)	-16.93 ^c
Utah	161.69 ^b	2.01	(51)	-28.28 ^c

State	Rate	SE	Rank	PD	State	Rate	SE	Rank	PD
Alabama	263.80 ^b	1.64	(05)	17.02 ^c	Montana	211.23 ^b	3.03	(40)	-6.30 ^c
Alaska	213.05	5.27	(38)	-5.50 ^c	Nebraska	218.75	2.35	(33)	-2.96
Arizona	190.61 ^b	1.18	(48)	-15.45 ^c	Nevada	217.95 ^b	2.12	(35)	-3.32
Arkansas	255.50 ^b	1.98	(08)	13.34 ^c	New Hampshire	227.19	2.88	(25)	0.78
California	198.69 ^b	0.54	(46)	-11.86 ^c	New Jersey	222.48	1.09	(29)	-1.31
Colorado	190.61 ^b	1.54	(49)	-15.45 ^c	New Mexico	194.76 ^b	2.16	(47)	-13.61 ^c
Connecticut	218.19 ^b	1.66	(34)	-3.22	New York	205.96 ^b	0.70	(43)	-8.64 ^c
Delaware	241.42 ^b	3.58	(16)	7.09 ^c	North Carolina	244.81 ^b	1.19	(15)	8.59 ^c
D.C.	258.07 ^b	4.82	(07)	14.47 ^c	North Dakota	210.79 ^b	3.62	(42)	-6.50 ^c
Florida	210.96 ^b	0.64	(41)	-6.42 ^c	Ohio	249.06 ^b	0.99	(10)	10.48 ^c
Georgia	241.11 ^b	1.30	(17)	6.95 ^c	Oklahoma	246.00 ^b	1.77	(12)	9.12 ^c
Hawaii	187.27 ^b	2.44	(50)	-16.93 ^c	Oregon	219.85	1.62	(32)	-2.48
Idaho	202.25 ^b	2.61	(45)	-10.28 ^c	Pennsylvania	239.62 ^b	0.88	(18)	6.29 ^c
Illinois	235.38 ^b	0.96	(20)	4.41	Rhode Island	234.89	3.10	(21)	4.19
Indiana	249.41 ^b	1.39	(09)	10.64 ^c	South Carolina	248.96 ^b	1.67	(11)	10.44 ^c
Iowa	225.36	1.76	(26)	-0.03	South Dakota	220.31	3.37	(31)	-2.27
Kansas	225.22	1.92	(27)	-0.10	Tennessee	263.99 ^b	1.46	(04)	17.10 ^c
Kentucky	275.03 ^b	1.78	(02)	22.00 ^c	Texas	221.29 ^b	0.75	(30)	-1.84
Louisiana	270.69 ^b	1.77	(03)	20.07 ^c	Utah	161.69 ^b	2.01	(51)	-28.28 ^c
Maine	245.00 ^b	2.76	(14)	8.68 ^c	Vermont	215.29	3.92	(36)	-4.50
Maryland	230.79 ^b	1.47	(23)	2.38	Virginia	235.65 ^b	1.28	(19)	4.53
Massachusetts	230.49 ^b	1.27	(24)	2.24	Washington	213.97 ^b	1.29	(37)	-5.09 ^c
Michigan	232.81 ^b	1.04	(22)	3.27	West Virginia	259.40 ^b	2.38	(06)	15.07 ^c
Minnesota	211.87 ^b	1.40	(39)	-6.02 ^c	Wisconsin	223.48	1.34	(28)	-0.87
Mississippi	276.31 ^b	2.18	(01)	22.57 ^c	Wyoming	204.62 ^b	4.29	(44)	-9.24 ^c
Missouri	245.73 ^b	1.38	(13)	9.00 ^c					



^a US Mortality Files, National Center for Health Statistics, Centers for Disease Control and Prevention. Rates are per 100,000 and are age-adjusted to the 2000 US Std Population (19 age groups - Census P25-1130).
^b Difference between state rate and total U.S. rate is statistically significant ($p \leq .0002$).
^c Absolute percent difference between state rate and total U.S. rate is 5% or more.
SE Standard error of the rate.
PD Percent difference between state rate and total U.S. rate.

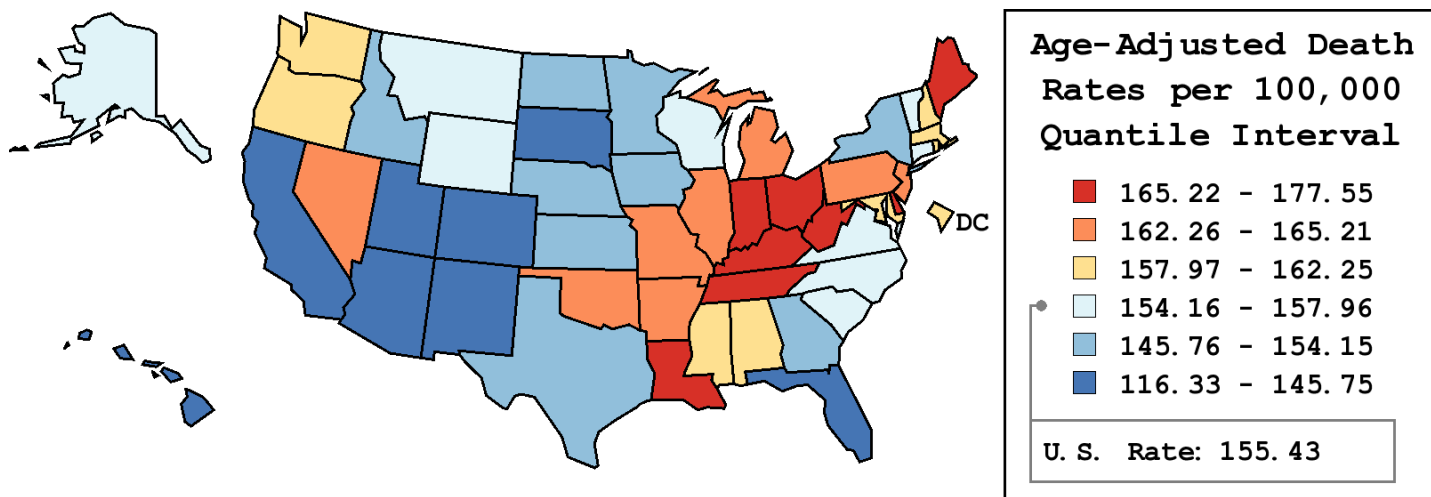
Table 2.20
All Cancer Sites (Invasive)

Age-Adjusted Cancer Death^a Rates by State, All Races, 2003-2007

Females

State	Rate	SE	Rank	PD
TOTAL U.S.	155.43	0.14		
High Five States				
Kentucky	177.55 ^b	1.20	(01)	14.23 ^c
West Virginia	175.76 ^b	1.70	(02)	13.07 ^c
Louisiana	171.55 ^b	1.18	(03)	10.37 ^c
Maine	169.50 ^b	1.98	(04)	9.05 ^c
Delaware	168.38 ^b	2.58	(05)	8.33 ^c
Low Five States				
Colorado	139.41 ^b	1.12	(47)	-10.31 ^c
New Mexico	137.97 ^b	1.62	(48)	-11.24 ^c
Arizona	135.42 ^b	0.90	(49)	-12.88 ^c
Hawaii	122.58 ^b	1.79	(50)	-21.13 ^c
Utah	116.33 ^b	1.52	(51)	-25.16 ^c

State	Rate	SE	Rank	PD	State	Rate	SE	Rank	PD
Alabama	159.92 ^b	1.07	(22)	2.89	Montana	156.50	2.35	(30)	0.68
Alaska	155.99	3.94	(31)	0.36	Nebraska	148.04 ^b	1.69	(40)	-4.76
Arizona	135.42 ^b	0.90	(49)	-12.88 ^c	Nevada	165.21 ^b	1.69	(09)	6.29 ^c
Arkansas	164.91 ^b	1.39	(10)	6.10 ^c	New Hampshire	162.23	2.08	(18)	4.37
California	145.18 ^b	0.40	(46)	-6.60 ^c	New Jersey	163.24 ^b	0.79	(14)	5.02 ^c
Colorado	139.41 ^b	1.12	(47)	-10.31 ^c	New Mexico	137.97 ^b	1.62	(48)	-11.24 ^c
Connecticut	154.74	1.19	(33)	-0.45	New York	150.47 ^b	0.51	(38)	-3.19
Delaware	168.38 ^b	2.58	(05)	8.33 ^c	North Carolina	157.69	0.80	(27)	1.45
D.C.	162.25	3.11	(17)	4.38	North Dakota	147.88	2.74	(41)	-4.86
Florida	145.35 ^b	0.49	(45)	-6.49 ^c	Ohio	168.35 ^b	0.69	(06)	8.31 ^c
Georgia	152.98	0.83	(37)	-1.58	Oklahoma	162.64 ^b	1.25	(16)	4.63
Hawaii	122.58 ^b	1.79	(50)	-21.13 ^c	Oregon	161.70 ^b	1.23	(20)	4.03
Idaho	146.62 ^b	2.00	(43)	-5.67 ^c	Pennsylvania	164.01 ^b	0.63	(12)	5.51 ^c
Illinois	163.45 ^b	0.68	(13)	5.16 ^c	Rhode Island	158.56	2.16	(24)	2.01
Indiana	166.69 ^b	0.96	(08)	7.24 ^c	South Carolina	156.67	1.12	(29)	0.80
Iowa	153.32	1.28	(36)	-1.36	South Dakota	145.75 ^b	2.47	(44)	-6.23 ^c
Kansas	154.15	1.39	(35)	-0.83	Tennessee	167.13 ^b	0.97	(07)	7.52 ^c
Kentucky	177.55 ^b	1.20	(01)	14.23 ^c	Texas	147.31 ^b	0.52	(42)	-5.23 ^c
Louisiana	171.55 ^b	1.18	(03)	10.37 ^c	Utah	116.33 ^b	1.52	(51)	-25.16 ^c
Maine	169.50 ^b	1.98	(04)	9.05 ^c	Vermont	156.75	2.88	(28)	0.84
Maryland	161.68 ^b	1.02	(21)	4.02	Virginia	157.96	0.87	(26)	1.62
Massachusetts	159.41 ^b	0.89	(23)	2.56	Washington	158.48	0.97	(25)	1.96
Michigan	163.09 ^b	0.75	(15)	4.92	West Virginia	175.76 ^b	1.70	(02)	13.07 ^c
Minnesota	149.08 ^b	1.02	(39)	-4.09	Wisconsin	154.50	0.97	(34)	-0.60
Mississippi	162.02 ^b	1.40	(19)	4.24	Wyoming	155.23	3.35	(32)	-0.13
Missouri	164.89 ^b	0.97	(11)	6.08 ^c					



^a US Mortality Files, National Center for Health Statistics, Centers for Disease Control and Prevention. Rates are per 100,000 and are age-adjusted to the 2000 US Std Population (19 age groups - Census P25-1130).
^b Difference between state rate and total U.S. rate is statistically significant ($p \leq .0002$).
^c Absolute percent difference between state rate and total U.S. rate is 5% or more.
SE Standard error of the rate.
PD Percent difference between state rate and total U.S. rate.

Table 2.21
All Cancer Sites (Invasive)

Estimated United States Cancer Prevalence Counts^a on January 1, 2007
By Race/Ethnicity, Sex and Years Since Diagnosis

Years Since Diagnosis		0 to <5	5 to <10	10 to <15	15 to <20	20 to <25	25 to <30	0 to <17 ^e	0 to <32 ^e	>=32 ^g	Complete ^h
<u>Race</u>	<u>Sex</u>										
All Races ^b	Both Sexes	4,128,739	2,849,626	1,881,402	1,133,219	660,646	414,727	9,393,312	11,196,431	517,305	11,713,736
	Males	2,110,305	1,414,018	900,238	446,691	221,063	123,842	4,652,707	5,248,197	104,857	5,353,054
	Females	2,018,434	1,435,608	981,164	686,528	439,583	290,885	4,740,605	5,948,234	412,448	6,360,682
White ^b	Both Sexes	3,549,667	2,501,487	1,669,462	1,028,390	601,419	379,225	8,203,121	9,846,464	456,479	10,302,943
	Males	1,806,202	1,232,561	795,374	408,847	203,179	114,733	4,042,339	4,590,344	97,851	4,688,195
	Females	1,743,465	1,268,926	874,088	619,543	398,240	264,492	4,160,782	5,256,120	358,628	5,614,748
Black ^b	Both Sexes	393,293	236,404	145,265	69,698	38,611	22,817	809,114	913,188	29,179	942,367
	Males	210,554	129,547	75,909	25,938	11,280	5,418	429,854	460,141	2,858	462,999
	Females	182,739	106,857	69,356	43,760	27,331	17,399	379,260	453,047	26,321	479,368
Asian/ Pacific Islander ^c	Both Sexes	111,468	66,868	39,327	+	+	+	227,997	+	+	+
	Males	48,693	27,237	14,994	+	+	+	94,285	+	+	+
	Females	62,775	39,631	24,333	+	+	+	133,712	+	+	+
Hispanic ^d	Both Sexes	242,034	146,222	88,702	+	+	+	501,611	+	+	+
	Males	116,603	68,482	38,827	+	+	+	233,031	+	+	+
	Females	125,431	77,740	49,875	+	+	+	268,580	+	+	+

Estimated prevalence percent^a on January 1, 2007, of the SEER 11 population diagnosed in the previous 17 years
By Age at Prevalence, Race/Ethnicity and Sex

Age at Prevalence		Age Specific (Crude)									Age-Adjusted ^f	
		All Ages	0-9	10-19	20-29	30-39	40-49	50-59	60-69	70-79	80+	All Ages
<u>Race</u>	<u>Sex</u>											
All Races ^c	Both Sexes	2.6612%	0.0795%	0.1575%	0.2794%	0.6764%	1.5898%	3.7412%	8.2074%	13.6274%	14.3849%	2.7186%
	Males	2.6537%	0.0843%	0.1675%	0.2592%	0.5230%	1.0880%	3.0641%	9.0062%	18.2916%	21.0395%	3.1045%
	Females	2.6687%	0.0744%	0.1470%	0.3012%	0.8343%	2.0922%	4.3879%	7.4843%	9.9995%	10.6734%	2.4951%
White ^c	Both Sexes	2.9016%	0.0854%	0.1709%	0.3117%	0.7504%	1.6847%	3.8710%	8.5468%	14.3057%	14.8471%	2.8460%
	Males	2.8623%	0.0909%	0.1820%	0.2906%	0.5919%	1.1674%	3.1413%	9.1816%	18.8168%	21.3703%	3.1973%
	Females	2.9410%	0.0796%	0.1593%	0.3351%	0.9205%	2.2202%	4.5910%	7.9563%	10.7117%	11.2426%	2.6522%
Black ^c	Both Sexes	1.9389%	0.0563%	0.1094%	0.1700%	0.4733%	1.2738%	3.6502%	8.5816%	13.5567%	12.4189%	2.5670%
	Males	2.1738%	0.0552%	0.1155%	0.1462%	0.3244%	0.8913%	3.6847%	11.8095%	21.6903%	21.1353%	3.5022%
	Females	1.7257%	0.0576%	0.1031%	0.1929%	0.6031%	1.6098%	3.6215%	6.0800%	8.1048%	8.1833%	1.9851%
Asian/ Pacific Islander ^c	Both Sexes	1.7429%	0.0639%	0.1214%	0.1783%	0.4091%	1.1723%	2.7145%	5.0524%	8.4354%	10.2622%	1.8025%
	Males	1.5477%	0.0703%	0.1314%	0.1594%	0.2530%	0.6160%	1.6415%	4.7249%	10.7800%	14.9286%	1.8500%
	Females	1.9264%	0.0571%	0.1108%	0.1975%	0.5573%	1.6852%	3.6549%	5.3311%	6.7103%	7.2408%	1.8227%
Hispanic ^d	Both Sexes	1.0760%	0.0709%	0.1418%	0.1980%	0.4572%	1.1046%	2.5135%	5.4879%	9.3151%	9.7153%	1.8600%
	Males	0.9671%	0.0765%	0.1502%	0.1882%	0.3375%	0.6500%	1.7790%	5.8345%	12.9875%	14.6503%	2.1041%
	Females	1.1911%	0.0650%	0.1331%	0.2096%	0.5964%	1.5917%	3.2150%	5.1912%	6.6245%	6.8413%	1.7519%

^a US 2007 cancer prevalence counts are based on 2007 cancer prevalence proportions from the SEER registries and 1/1/2007 US population estimates based on the average of 2006 and 2007 population estimates from the US Bureau of the Census. Prevalence was calculated using the First Malignant Primary Only for a person.

^{b c d} Statistics based on (b) SEER 9 Areas (c) SEER 11 Areas and Rural Georgia (d) NHIA for Hispanic for SEER 11 Areas and Rural Georgia.

^e Maximum limited-duration prevalence: 32 years for 1975-2007 SEER 9 data; 17 years for 1990-2007 SEER 11 data (used to calculate prevalence for Hispanics and Asian Pacific Islanders).

^f Percentages are age-adjusted to the 2000 US Standard Population (19 age groups - Census P25-1130) by 5-year age groups.

^{g h i} (g) Cases diagnosed more than 32 years ago were estimated using the completeness index method (Capocaccia et. al. 1997, Merrill et. al. 2000). (h) Complete prevalence is obtained by summing 0 to <32 and >=32. (i) Age-specific completeness index was approximated using empirical data from historical Connecticut tumor registry.

- Statistic not shown. Statistic based on fewer than 5 cases estimated alive in SEER for the time interval.

+ Not available.

SEER Observed Incidence, SEER Delay Adjusted Incidence and US Death Rates^a All Cancer Sites, by Race and Sex



Figure 2.1

^a Source: SEER 9 areas and US Mortality Files (National Center for Health Statistics, CDC). Rates are age-adjusted to the 2000 US Std Population (19 age groups - Census P25-1103). Regression lines and APCs are calculated using the Joinpoint Regression Program Version 3.4.3, April 2010, National Cancer Institute. The APC is the Annual Percent Change for the regression line segments. The APC shown on the graph is for the most recent trend.
* The APC is significantly different from zero ($p < 0.05$).

SEER Observed Incidence, SEER Delay Adjusted Incidence and US Death Rates^a All Cancer Sites, Under 65 Years of Age, by Race and Sex

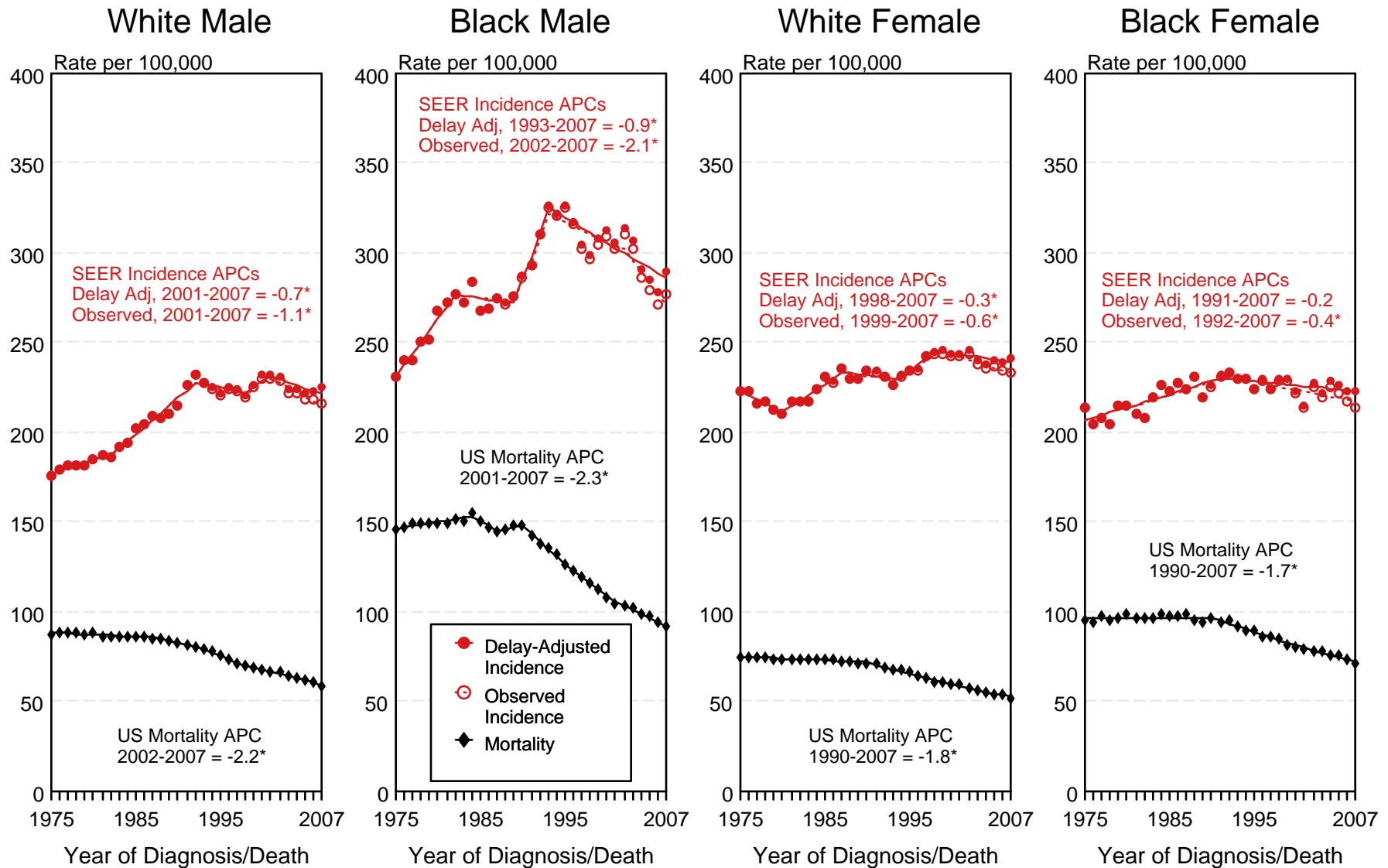


Figure 2.2

^a Source: SEER 9 areas and US Mortality Files (National Center for Health Statistics, CDC). Rates are age-adjusted to the 2000 US Std Population (19 age groups - Census P25-1103). Regression lines and APCs are calculated using the Joinpoint Regression Program Version 3.4.3, April 2010, National Cancer Institute. The APC is the Annual Percent Change for the regression line segments. The APC shown on the graph is for the most recent trend.
* The APC is significantly different from zero ($p < 0.05$).

SEER Observed Incidence, SEER Delay Adjusted Incidence and US Death Rates^a All Cancer Sites, Ages 65 and Over, by Race and Sex

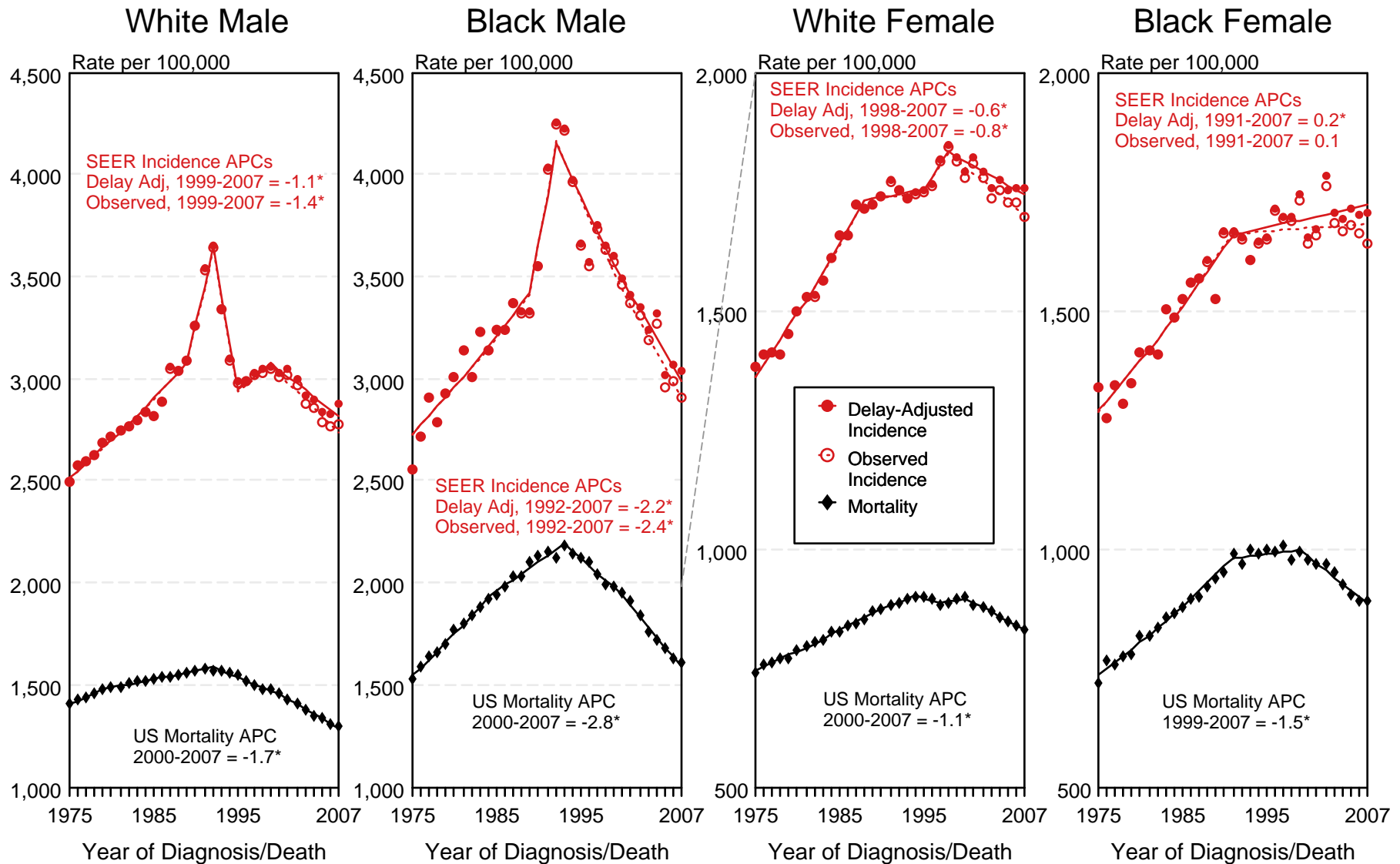


Figure 2.3

^a Source: SEER 9 areas and US Mortality Files (National Center for Health Statistics, CDC). Rates are age-adjusted to the 2000 US Std Population (19 age groups - Census P25-1103). Regression lines and APCs are calculated using the Joinpoint Regression Program Version 3.4.3, April 2010, National Cancer Institute. The APC is the Annual Percent Change for the regression line segments. The APC shown on the graph is for the most recent trend.
* The APC is significantly different from zero ($p < 0.05$).

SEER Incidence and US Death Rates^a All Cancer Sites, Both Sexes

Joinpoint Analyses for Whites and Blacks from 1975-2007

and for Asian/Pacific Islanders, American Indians/Alaska Natives and Hispanics from 1992-2007

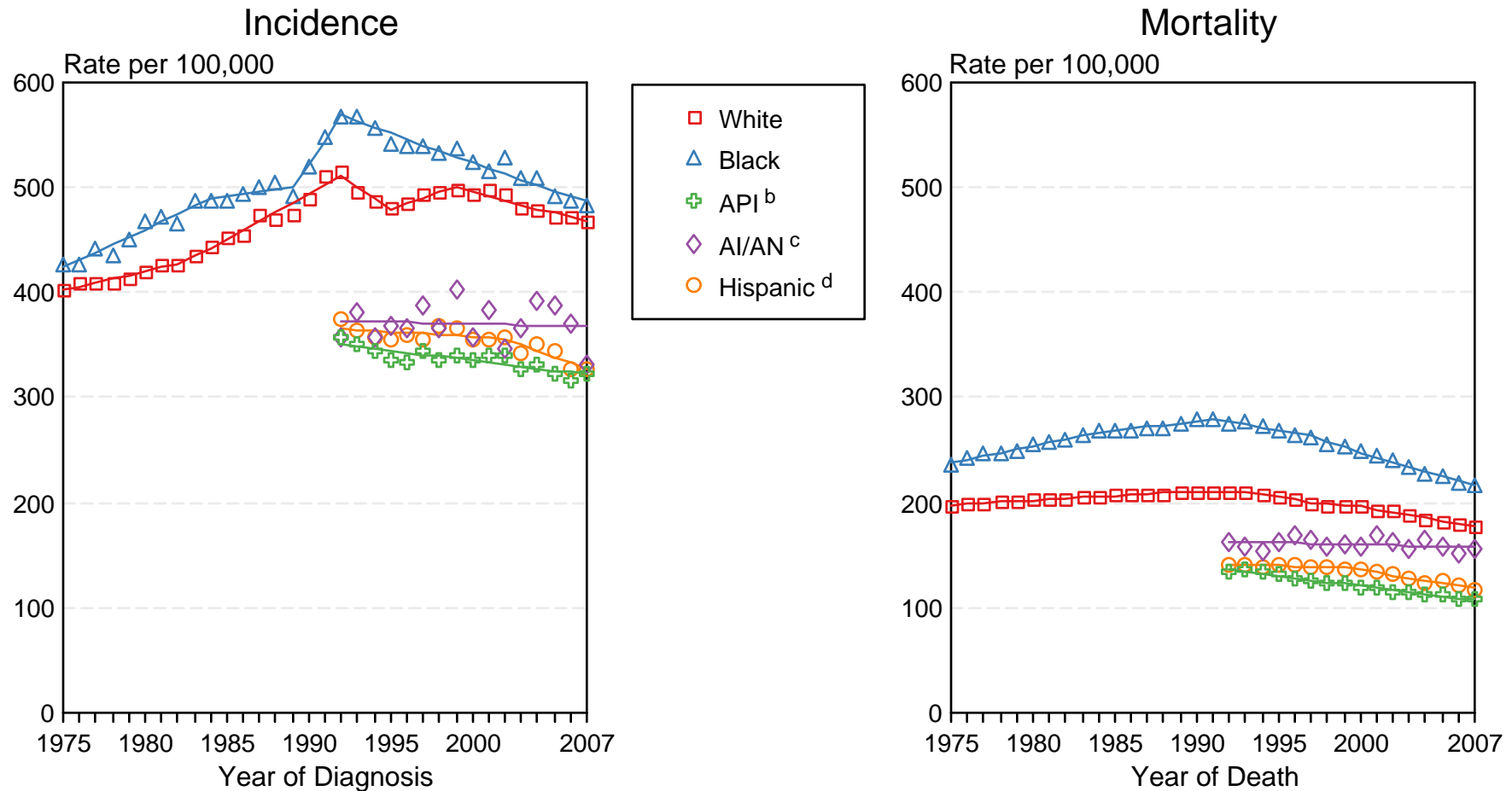


Figure 2.4

Source: Incidence data for whites and blacks are from the SEER 9 areas (San Francisco, Connecticut, Detroit, Hawaii, Iowa, New Mexico, Seattle, Utah, Atlanta).

Incidence data for Asian/Pacific Islanders, American Indians/Alaska Natives and Hispanics are from the SEER 13 Areas (SEER 9 Areas, San Jose-Monterey, Los Angeles, Alaska Native Registry and Rural Georgia). Mortality data are from US Mortality Files, National Center for Health Statistics, CDC.

^a Rates are age-adjusted to the 2000 US Std Population (19 age groups - Census P25-1103).

Regression lines are calculated using the Joinpoint Regression Program Version 3.4.3, April 2010, National Cancer Institute. Joinpoint analyses for Whites and Blacks during the 1975-2007 period allow a maximum of 4 joinpoints. Analyses for other ethnic groups during the period 1992-2007 allow a maximum of 2 joinpoints.

^b API = Asian/Pacific Islander.

^c AI/AN = American Indian/Alaska Native. Rates for American Indian/Alaska Native are based on the CHSDA (Contract Health Service Delivery Area) counties.

^d Hispanic is not mutually exclusive from whites, blacks, Asian/Pacific Islanders, and American Indians/Alaska Natives. Incidence data for Hispanics are based on NHIA and exclude cases from the Alaska Native Registry. Mortality data for Hispanics exclude cases from Connecticut, the District of Columbia, Maine, Maryland, Minnesota, New Hampshire, New York, North Dakota, Oklahoma, and Vermont.

SEER Observed Incidence and SEER Delay Adjusted Incidence Rates^a SEER 9 Areas Compared to SEER 13 Areas All Cancer Sites, Males, by Race

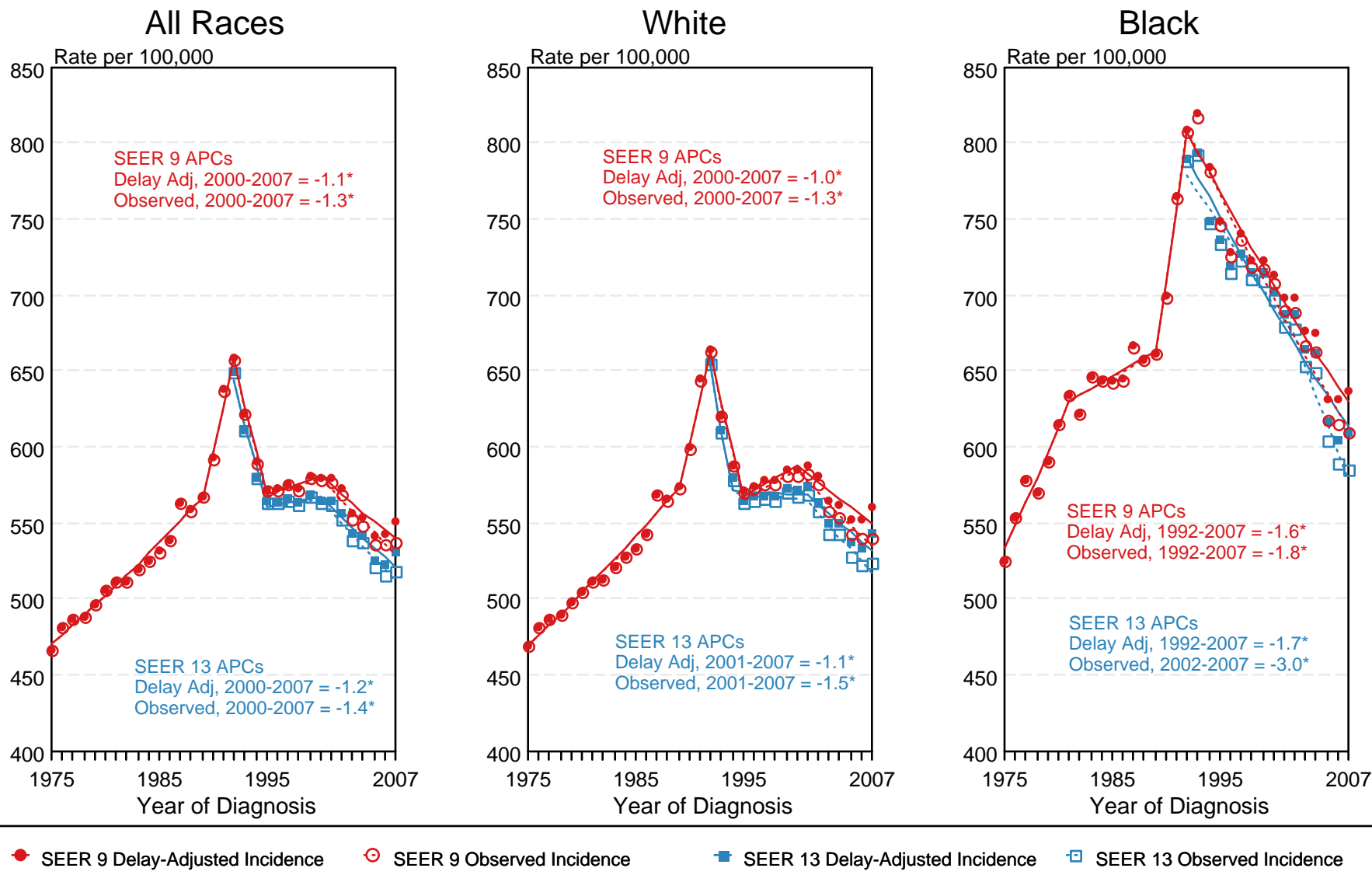


Figure 2.5

^a Source: SEER 9 areas and SEER 13 areas.
Rates are age-adjusted to the 2000 US Std Population (19 age groups - Census P25-1103).
Regression lines and APCs are calculated using the Joinpoint Regression Program Version 3.4.3, April 2010, National Cancer Institute.
The APC is the Annual Percent Change for the regression line segments. The APC shown on the graph is for the most recent trend.
* The APC is significantly different from zero ($p < 0.05$).

SEER Observed Incidence and SEER Delay Adjusted Incidence Rates^a SEER 9 Areas Compared to SEER 13 Areas All Cancer Sites, Female, by Race

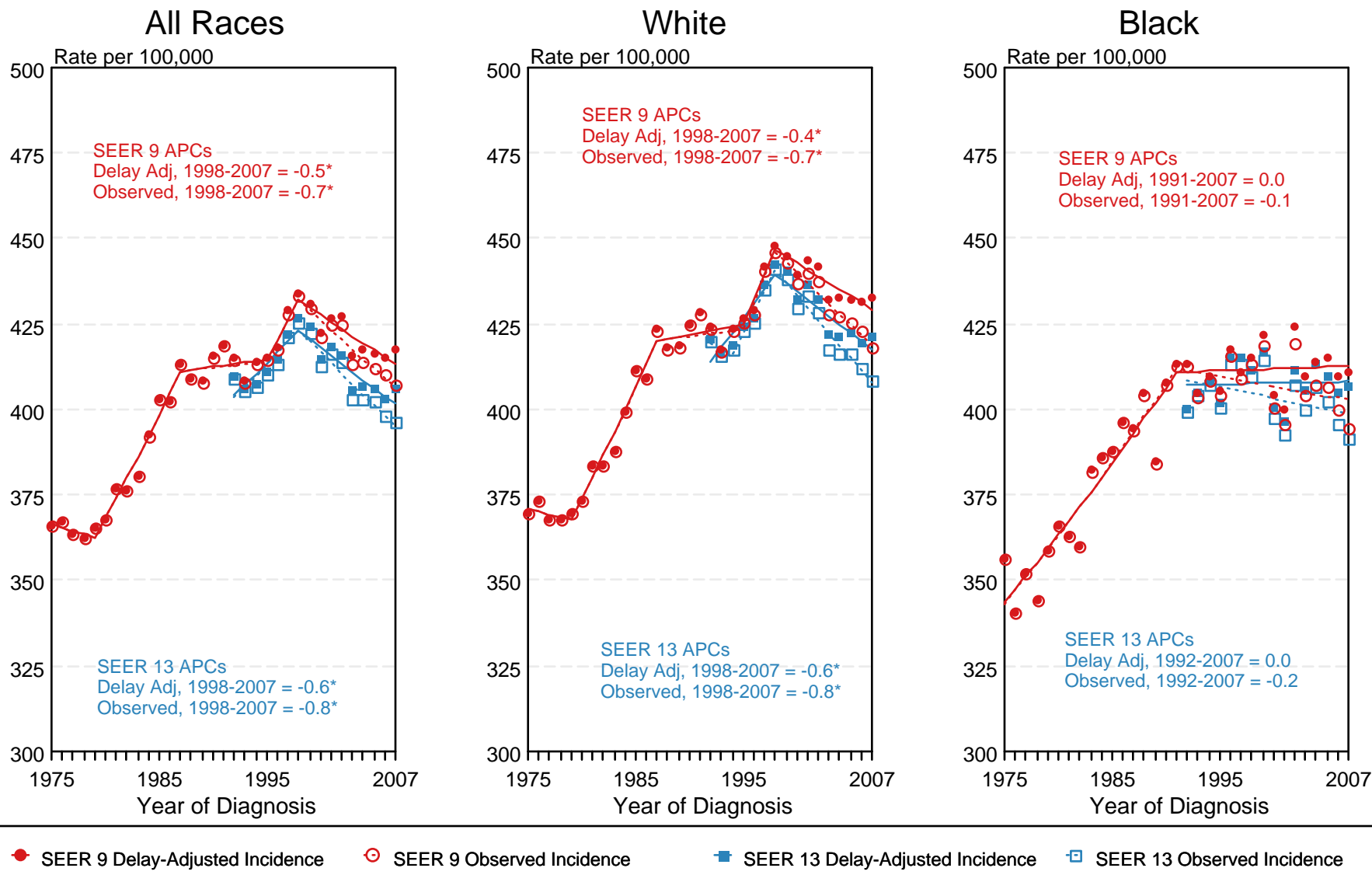


Figure 2.6

^a Source: SEER 9 areas and SEER 13 areas.
Rates are age-adjusted to the 2000 US Std Population (19 age groups - Census P25-1103).
Regression lines and APCs are calculated using the Joinpoint Regression Program Version 3.4.3, April 2010, National Cancer Institute.
The APC is the Annual Percent Change for the regression line segments. The APC shown on the graph is for the most recent trend.
* The APC is significantly different from zero ($p < 0.05$).