

Table 9.1
Hodgkin Lymphoma

Trends in SEER Incidence^{ab} and U.S. Mortality^c Using the Joinpoint Regression Program,
1975-2008 With up to Five Joinpoints, 1992-2008 With up to Three Joinpoints,
Both Sexes by Race/Ethnicity

	JP Trend 1		JP Trend 2		JP Trend 3		JP Trend 4		JP Trend 5		JP Trend 6		AAPC ^d	
	Years	APC	Years	APC	Years	APC	Years	APC	Years	APC	Years	APC	1999-08	2004-08
<u>SEER 9 Delay-Adjusted Incidence^a, 1975-2008</u>														
All Races	1975-08	-0.1											-0.1	-0.1
White	1975-08	-0.1											-0.1	-0.1
Black	1975-08	1.3*											1.3*	1.3*
<u>SEER 13 Delay-Adjusted Incidence^b, 1992-2008</u>														
All Races	1992-08	0.3*											0.3*	0.3*
White	1992-08	0.2											0.2	0.2
Black	1992-08	1.2*											1.2*	1.2*
<u>SEER 9 Observed Incidence^a, 1975-2008</u>														
All Races	1975-08	-0.1											-0.1	-0.1
White	1975-08	-0.1											-0.1	-0.1
Black	1975-08	1.2*											1.2*	1.2*
<u>SEER 13 Observed Incidence^b, 1992-2008</u>														
All Races	1992-08	0.3											0.3	0.3
White	1992-08	0.2											0.2	0.2
White NH ^{ef}	1992-08	0.4*											0.4*	0.4*
Black	1992-08	1.1*											1.1*	1.1*
Black NH ^{ef}	1992-08	1.2*											1.2*	1.2*
API ^e	1992-08	2.9*											2.9*	2.9*
AI/AN ^{eg}	-	-											-	-
Hispanic ^f	1992-08	-0.1											-0.1	-0.1
<u>U.S. Cancer Mortality^c, 1975-2008</u>														
All Races	1975-79	-6.5*	1979-98	-3.5*	1998-08	-2.3*							-2.3*	-2.3*
White	1975-79	-6.2*	1979-96	-3.6*	1996-08	-2.4*							-2.4*	-2.4*
Black	1975-78	-8.4	1978-08	-2.7*									-2.7*	-2.7*
<u>U.S. Cancer Mortality^c, 1992-2008</u>														
All Races	1992-08	-2.8*											-2.8*	-2.8*
White	1992-08	-2.7*											-2.7*	-2.7*
White NH ^{ef}	1992-08	-2.5*											-2.5*	-2.5*
Black	1992-08	-3.0*											-3.0*	-3.0*
Black NH ^{ef}	1992-08	-2.6*											-2.6*	-2.6*
API ^e	1992-08	-0.5											-0.5	-0.5
AI/AN ^{eg}	1992-08	3.2											3.2	3.2
Hispanic ^f	1992-08	-3.2*											-3.2*	-3.2*

Joinpoint Regression Program Version 3.5, April 2011, National Cancer Institute. (<http://surveillance.cancer.gov/joinpoint/>).

The APC is the Annual Percent Change based on rates age-adjusted to the 2000 US Std Population (19 age groups - Census P25-1130).

^a Trends are from the SEER 9 areas (San Francisco, Connecticut, Detroit, Hawaii, Iowa, New Mexico, Seattle, Utah, and Atlanta).

^b Trends are from the SEER 13 areas (SEER 9 Areas, Los Angeles, San Jose-Monterey, Rural Georgia, and the Alaska Native Registry).

^c Trends are from US Mortality Files, National Center for Health Statistics, Centers for Disease Control and Prevention.

^d The AAPC is the Average Annual Percent Change and is based on the APCs calculated by Joinpoint.

^e API - Asian/Pacific Islander, AI/AN - American Indian/Alaska Native, NH - Non-Hispanic

^f Hispanic and Non-Hispanic are not mutually exclusive from whites, blacks, Asian/Pacific Islanders, and American Indians/Alaska

Natives. Incidence data for Hispanics and Non-Hispanics are based on NHIA and exclude cases from the Alaska Native Registry.

The Hispanic and Non-Hispanic mortality trends exclude deaths from CT, DC, ME, MD, MN, NH, NY, ND, OK and VT.

^g Data for American Indian/Alaska Native are based on the CHSDA (Contract Health Service Delivery Area) counties.

* The APC/AAPC is significantly different from zero ($p < .05$).

- Joinpoint regression line analysis could not be performed on data series.

Table 9.2
Hodgkin Lymphoma

Trends in SEER Incidence^{ab} and U.S. Mortality^c Using the Joinpoint Regression Program,
1975-2008 With up to Five Joinpoints, 1992-2008 With up to Three Joinpoints,
Males by Race/Ethnicity

	JP Trend 1		JP Trend 2		JP Trend 3		JP Trend 4		JP Trend 5		JP Trend 6		AAPC ^d	
	Years	APC	Years	APC	Years	APC	Years	APC	Years	APC	Years	APC	1999-08	2004-08
<u>SEER 9 Delay-Adjusted Incidence^a, 1975-2008</u>														
All Races	1975-01	-0.7*	2001-08	1.5									1.0	1.5
White	1975-08	-0.4*											-0.4*	-0.4*
Black	1975-08	0.5											0.5	0.5
<u>SEER 13 Delay-Adjusted Incidence^b, 1992-2008</u>														
All Races	1992-08	0.3											0.3	0.3
White	1992-08	0.2											0.2	0.2
Black	1992-08	1.5*											1.5*	1.5*
<u>SEER 9 Observed Incidence^a, 1975-2008</u>														
All Races	1975-01	-0.8*	2001-08	1.4									0.9	1.4
White	1975-08	-0.4*											-0.4*	-0.4*
Black	1975-08	0.5											0.5	0.5
<u>SEER 13 Observed Incidence^b, 1992-2008</u>														
All Races	1992-08	0.3											0.3	0.3
White	1992-08	0.2											0.2	0.2
White NH ^{ef}	1992-08	0.4											0.4	0.4
Black	1992-08	1.4*											1.4*	1.4*
Black NH ^{ef}	1992-08	1.4*											1.4*	1.4*
API ^e	1992-08	2.4*											2.4*	2.4*
AI/AN ^{eg}	-	-											-	-
Hispanic ^f	1992-08	-0.5											-0.5	-0.5
<u>U.S. Cancer Mortality^c, 1975-2008</u>														
All Races	1975-97	-4.0*	1997-08	-2.3*									-2.3*	-2.3*
White	1975-96	-4.1*	1996-08	-2.3*									-2.3*	-2.3*
Black	1975-08	-3.2*											-3.2*	-3.2*
<u>U.S. Cancer Mortality^c, 1992-2008</u>														
All Races	1992-94	-10.8	1994-08	-2.3*									-2.3*	-2.3*
White	1992-94	-11.2	1994-08	-2.2*									-2.2*	-2.2*
White NH ^{ef}	1992-08	-2.5*											-2.5*	-2.5*
Black	1992-08	-3.5*											-3.5*	-3.5*
Black NH ^{ef}	1992-08	-3.1*											-3.1*	-3.1*
API ^e	1992-08	-3.5											-3.5	-3.5
AI/AN ^{eg}	-	-											-	-
Hispanic ^f	1992-08	-3.7*											-3.7*	-3.7*

Joinpoint Regression Program Version 3.5, April 2011, National Cancer Institute. (<http://surveillance.cancer.gov/joinpoint/>).

The APC is the Annual Percent Change based on rates age-adjusted to the 2000 US Std Population (19 age groups - Census P25-1130).

^a Trends are from the SEER 9 areas (San Francisco, Connecticut, Detroit, Hawaii, Iowa, New Mexico, Seattle, Utah, and Atlanta).

^b Trends are from the SEER 13 areas (SEER 9 Areas, Los Angeles, San Jose-Monterey, Rural Georgia, and the Alaska Native Registry).

^c Trends are from US Mortality Files, National Center for Health Statistics, Centers for Disease Control and Prevention.

^d The AAPC is the Average Annual Percent Change and is based on the APCs calculated by Joinpoint.

^e API - Asian/Pacific Islander, AI/AN - American Indian/Alaska Native, NH - Non-Hispanic

^f Hispanic and Non-Hispanic are not mutually exclusive from whites, blacks, Asian/Pacific Islanders, and American Indians/Alaska

Natives. Incidence data for Hispanics and Non-Hispanics are based on NHIA and exclude cases from the Alaska Native Registry.

The Hispanic and Non-Hispanic mortality trends exclude deaths from CT, DC, ME, MD, MN, NH, NY, ND, OK and VT.

^g Data for American Indian/Alaska Native are based on the CHSDA (Contract Health Service Delivery Area) counties.

* The APC/AAPC is significantly different from zero ($p < .05$).

- Joinpoint regression line analysis could not be performed on data series.

Table 9.3
Hodgkin Lymphoma

Trends in SEER Incidence^{ab} and U.S. Mortality^c Using the Joinpoint Regression Program,
1975-2008 With up to Five Joinpoints, 1992-2008 With up to Three Joinpoints,
Females by Race/Ethnicity

	JP Trend 1		JP Trend 2		JP Trend 3		JP Trend 4		JP Trend 5		JP Trend 6		AAPC ^d	
	Years	APC	Years	APC	Years	APC	Years	APC	Years	APC	Years	APC	1999-08	2004-08
<u>SEER 9 Delay-Adjusted Incidence^a, 1975-2008</u>														
All Races	1975-08	0.4*											0.4*	0.4*
White	1975-08	0.4*											0.4*	0.4*
Black	1975-08	2.4*											2.4*	2.4*
<u>SEER 13 Delay-Adjusted Incidence^b, 1992-2008</u>														
All Races	1992-08	0.3											0.3	0.3
White	1992-08	0.2											0.2	0.2
Black	1992-08	0.9											0.9	0.9
<u>SEER 9 Observed Incidence^a, 1975-2008</u>														
All Races	1975-08	0.4*											0.4*	0.4*
White	1975-08	0.3*											0.3*	0.3*
Black	1975-08	2.3*											2.3*	2.3*
<u>SEER 13 Observed Incidence^b, 1992-2008</u>														
All Races	1992-08	0.2											0.2	0.2
White	1992-08	0.2											0.2	0.2
White NH ^{ef}	1992-08	0.3											0.3	0.3
Black	1992-08	0.8											0.8	0.8
Black NH ^{ef}	1992-08	0.8											0.8	0.8
API ^e	1992-08	3.6*											3.6*	3.6*
AI/AN ^{eg}	-	-											-	-
Hispanic ^f	1992-08	0.4											0.4	0.4
<u>U.S. Cancer Mortality^c, 1975-2008</u>														
All Races	1975-85	-4.8*	1985-08	-2.6*									-2.6*	-2.6*
White	1975-85	-5.0*	1985-08	-2.6*									-2.6*	-2.6*
Black	1975-08	-2.5*											-2.5*	-2.5*
<u>U.S. Cancer Mortality^c, 1992-2008</u>														
All Races	1992-08	-2.6*											-2.6*	-2.6*
White	1992-08	-2.6*											-2.6*	-2.6*
White NH ^{ef}	1992-08	-2.5*											-2.5*	-2.5*
Black	1992-08	-2.5*											-2.5*	-2.5*
Black NH ^{ef}	1992-08	-2.1*											-2.1*	-2.1*
API ^e	-	-											-	-
AI/AN ^{eg}	-	-											-	-
Hispanic ^f	1992-08	-2.6*											-2.6*	-2.6*

Joinpoint Regression Program Version 3.5, April 2011, National Cancer Institute. (<http://surveillance.cancer.gov/joinpoint/>).

The APC is the Annual Percent Change based on rates age-adjusted to the 2000 US Std Population (19 age groups - Census P25-1130).

^a Trends are from the SEER 9 areas (San Francisco, Connecticut, Detroit, Hawaii, Iowa, New Mexico, Seattle, Utah, and Atlanta).

^b Trends are from the SEER 13 areas (SEER 9 Areas, Los Angeles, San Jose-Monterey, Rural Georgia, and the Alaska Native Registry).

^c Trends are from US Mortality Files, National Center for Health Statistics, Centers for Disease Control and Prevention.

^d The AAPC is the Average Annual Percent Change and is based on the APCs calculated by Joinpoint.

^e API - Asian/Pacific Islander, AI/AN - American Indian/Alaska Native, NH - Non-Hispanic

^f Hispanic and Non-Hispanic are not mutually exclusive from whites, blacks, Asian/Pacific Islanders, and American Indians/Alaska

Natives. Incidence data for Hispanics and Non-Hispanics are based on NHIA and exclude cases from the Alaska Native Registry.

The Hispanic and Non-Hispanic mortality trends exclude deaths from CT, DC, ME, MD, MN, NH, NY, ND, OK and VT.

^g Data for American Indian/Alaska Native are based on the CHSDA (Contract Health Service Delivery Area) counties.

* The APC/AAPC is significantly different from zero ($p < .05$).

- Joinpoint regression line analysis could not be performed on data series.

Table 9.4
Hodgkin Lymphoma

Delay-adjusted SEER Incidence^a Rates by Year, Race and Sex

Year of Diagnosis:	All Races			Whites			Blacks		
	Total	Males	Females	Total	Males	Females	Total	Males	Females
1975	3.08	3.86	2.39	3.23	3.91	2.63	2.58	4.41	-
1976	2.76	3.37	2.24	2.88	3.44	2.41	2.57	3.91	-
1977	2.98	3.60	2.46	3.26	3.92	2.71	1.68	1.91	-
1978	2.80	3.41	2.32	3.07	3.70	2.58	1.47	2.01	-
1979	2.93	3.91	2.08	3.08	4.05	2.26	2.86	4.68	-
1980	2.77	3.31	2.27	2.98	3.53	2.48	1.82	2.07	1.54
1981	2.91	3.58	2.33	3.22	3.91	2.61	1.39	1.86	-
1982	2.93	3.50	2.46	3.13	3.68	2.70	2.58	3.15	2.04
1983	3.02	3.72	2.39	3.33	4.00	2.70	2.11	3.85	-
1984	3.06	3.71	2.47	3.38	4.01	2.79	2.07	3.31	-
1985	2.98	3.50	2.50	3.31	3.84	2.83	1.74	2.26	-
1986	2.73	3.34	2.21	2.91	3.50	2.40	2.28	2.81	1.90
1987	3.05	3.72	2.50	3.35	4.01	2.81	2.05	2.78	1.41
1988	3.09	3.59	2.66	3.44	4.01	2.95	1.90	1.93	1.86
1989	3.06	3.68	2.54	3.36	3.98	2.84	2.17	3.16	1.38
1990	3.07	3.52	2.64	3.32	3.84	2.81	2.97	3.18	2.75
1991	3.02	3.49	2.59	3.34	3.84	2.90	2.39	2.66	2.09
1992	2.87	3.11	2.69	3.06	3.23	2.93	2.65	2.67	2.62
1993	2.86	3.27	2.51	3.09	3.49	2.75	2.99	3.72	2.48
1994	2.85	3.15	2.59	3.16	3.51	2.83	2.07	2.31	1.93
1995	2.77	3.23	2.37	3.06	3.53	2.66	2.30	2.86	1.80
1996	2.85	3.32	2.41	3.14	3.63	2.68	2.48	3.21	1.84
1997	2.81	2.94	2.70	3.07	3.24	2.92	2.59	2.40	2.74
1998	2.79	3.10	2.55	3.14	3.45	2.88	2.17	2.37	1.99
1999	2.85	3.07	2.69	3.10	3.24	3.03	2.48	3.04	2.03
2000	2.81	3.30	2.35	3.07	3.54	2.62	2.44	3.06	1.89
2001	2.56	2.93	2.23	2.75	3.13	2.38	2.44	3.13	1.94
2002	2.94	3.26	2.68	3.14	3.42	2.91	2.89	3.24	2.65
2003	2.70	3.10	2.37	2.99	3.42	2.60	2.41	2.80	2.24
2004	2.93	3.02	2.87	3.10	3.17	3.08	3.06	3.24	2.94
2005	3.00	3.45	2.62	3.22	3.69	2.84	3.11	3.35	2.89
2006	2.96	3.23	2.70	3.16	3.41	2.91	3.05	3.69	2.50
2007	3.13	3.61	2.70	3.39	3.85	2.96	3.16	3.86	2.58
2008	2.92	3.32	2.57	3.15	3.53	2.82	3.05	3.56	2.60

Additional information on the model used to delay-adjust SEER Incidence rates can be found at [\(http://surveillance.cancer.gov/delay/\)](http://surveillance.cancer.gov/delay/).

^a SEER 9 areas (San Francisco, Connecticut, Detroit, Hawaii, Iowa, New Mexico, Seattle, Utah, and Atlanta). Rates are per 100,000 and are age-adjusted to the 2000 US Std Population (19 age groups - Census P25-1130).

- Delay-adjusted rate is not shown for observed rates based on less than 16 cases for the time interval.

Table 9.5
Hodgkin Lymphoma

Age-adjusted SEER Incidence^a Rates by Year, Race and Sex

Year of Diagnosis:	All Races			Whites			Blacks		
	Total	Males	Females	Total	Males	Females	Total	Males	Females
1975	3.08	3.86	2.39	3.23	3.91	2.63	2.58	4.41	-
1976	2.76	3.37	2.24	2.88	3.44	2.41	2.57	3.91	-
1977	2.98	3.60	2.46	3.26	3.92	2.71	1.68	1.91	-
1978	2.80	3.41	2.32	3.07	3.70	2.58	1.47	2.01	-
1979	2.93	3.91	2.08	3.08	4.05	2.26	2.86	4.68	-
1980	2.77	3.31	2.27	2.98	3.53	2.48	1.82	2.07	1.54
1981	2.91	3.58	2.33	3.22	3.91	2.61	1.39	1.86	-
1982	2.93	3.50	2.46	3.13	3.67	2.70	2.58	3.15	2.04
1983	3.02	3.72	2.39	3.33	3.99	2.70	2.11	3.85	-
1984	3.06	3.71	2.47	3.38	4.01	2.79	2.07	3.31	-
1985	2.97	3.50	2.50	3.31	3.84	2.83	1.74	2.26	-
1986	2.73	3.33	2.21	2.91	3.50	2.40	2.27	2.80	1.90
1987	3.05	3.72	2.50	3.35	4.00	2.80	2.05	2.78	1.41
1988	3.09	3.59	2.66	3.44	4.00	2.94	1.90	1.93	1.86
1989	3.05	3.67	2.54	3.35	3.97	2.84	2.16	3.15	1.37
1990	3.07	3.52	2.64	3.32	3.84	2.81	2.96	3.18	2.75
1991	3.01	3.48	2.59	3.34	3.83	2.89	2.38	2.65	2.08
1992	2.87	3.10	2.69	3.05	3.22	2.92	2.64	2.66	2.61
1993	2.85	3.26	2.50	3.08	3.48	2.74	2.98	3.70	2.46
1994	2.85	3.14	2.59	3.15	3.50	2.82	2.06	2.30	1.91
1995	2.76	3.22	2.36	3.05	3.52	2.65	2.29	2.84	1.78
1996	2.84	3.32	2.40	3.12	3.61	2.67	2.46	3.19	1.83
1997	2.81	2.94	2.69	3.06	3.22	2.90	2.57	2.38	2.72
1998	2.79	3.09	2.54	3.12	3.44	2.86	2.15	2.35	1.98
1999	2.84	3.06	2.68	3.09	3.22	3.01	2.46	3.01	2.01
2000	2.80	3.29	2.34	3.05	3.52	2.61	2.42	3.03	1.87
2001	2.56	2.92	2.22	2.73	3.11	2.37	2.41	3.10	1.92
2002	2.93	3.24	2.67	3.12	3.40	2.89	2.85	3.20	2.62
2003	2.69	3.09	2.36	2.97	3.39	2.59	2.37	2.76	2.21
2004	2.91	3.01	2.85	3.07	3.15	3.05	3.02	3.20	2.90
2005	2.98	3.43	2.61	3.19	3.66	2.82	3.06	3.30	2.85
2006	2.94	3.21	2.68	3.13	3.37	2.88	3.00	3.63	2.46
2007	3.11	3.59	2.68	3.35	3.81	2.93	3.11	3.79	2.53
2008	2.89	3.28	2.53	3.10	3.47	2.77	2.96	3.46	2.53
1975-2008	2.90	3.36	2.50	3.15	3.61	2.74	2.46	3.02	2.00

^a SEER 9 areas (San Francisco, Connecticut, Detroit, Hawaii, Iowa, New Mexico, Seattle, Utah, and Atlanta). Rates are per 100,000 and are age-adjusted to the 2000 US Std Population (19 age groups - Census P25-1130).
- Statistic not shown. Rate based on less than 16 cases for the time interval.

Table 9.6
Hodgkin Lymphoma

Age-adjusted U.S. Death^a Rates by Year, Race and Sex

Year of Death:	All Races			Whites			Blacks		
	Total	Males	Females	Total	Males	Females	Total	Males	Females
1975	1.31	1.69	1.00	1.35	1.73	1.04	1.07	1.50	0.72
1976	1.17	1.50	0.90	1.20	1.52	0.94	0.97	1.44	0.60
1977	1.14	1.45	0.87	1.18	1.49	0.90	0.92	1.20	0.69
1978	1.06	1.35	0.82	1.10	1.38	0.87	0.76	1.17	0.44
1979	0.97	1.27	0.71	1.00	1.31	0.74	0.76	1.06	0.51
1980	0.98	1.23	0.76	1.01	1.27	0.80	0.75	1.09	0.48
1981	0.93	1.15	0.74	0.96	1.19	0.76	0.74	0.88	0.62
1982	0.88	1.09	0.70	0.92	1.15	0.72	0.70	0.78	0.62
1983	0.85	1.09	0.65	0.88	1.13	0.68	0.64	0.90	0.45
1984	0.86	1.18	0.60	0.88	1.19	0.63	0.79	1.18	0.47
1985	0.77	0.98	0.58	0.78	1.00	0.60	0.71	0.96	0.51
1986	0.78	1.00	0.58	0.80	1.04	0.60	0.65	0.85	0.49
1987	0.74	0.96	0.56	0.77	0.98	0.58	0.67	0.94	0.46
1988	0.67	0.88	0.50	0.69	0.91	0.51	0.59	0.75	0.48
1989	0.71	0.92	0.54	0.73	0.94	0.56	0.66	0.92	0.47
1990	0.66	0.85	0.50	0.69	0.88	0.52	0.56	0.81	0.36
1991	0.65	0.83	0.51	0.66	0.83	0.51	0.67	0.89	0.49
1992	0.65	0.83	0.50	0.67	0.86	0.52	0.58	0.77	0.45
1993	0.61	0.79	0.47	0.63	0.80	0.50	0.57	0.83	0.39
1994	0.56	0.66	0.47	0.56	0.66	0.48	0.55	0.73	0.41
1995	0.55	0.67	0.44	0.56	0.68	0.46	0.53	0.73	0.36
1996	0.53	0.64	0.44	0.55	0.65	0.46	0.47	0.63	0.36
1997	0.53	0.62	0.46	0.54	0.63	0.47	0.54	0.67	0.43
1998	0.48	0.61	0.36	0.49	0.62	0.37	0.48	0.66	0.33
1999	0.51	0.63	0.41	0.53	0.66	0.43	0.41	0.55	0.30
2000	0.46	0.55	0.39	0.48	0.57	0.41	0.35	0.43	0.30
2001	0.47	0.56	0.38	0.48	0.59	0.39	0.42	0.52	0.35
2002	0.47	0.58	0.38	0.49	0.60	0.40	0.40	0.57	0.27
2003	0.46	0.55	0.39	0.48	0.57	0.41	0.36	0.47	0.28
2004	0.43	0.55	0.34	0.44	0.57	0.35	0.40	0.47	0.34
2005	0.42	0.51	0.36	0.43	0.51	0.37	0.42	0.56	0.32
2006	0.44	0.56	0.33	0.45	0.57	0.35	0.42	0.57	0.30
2007	0.41	0.51	0.33	0.43	0.53	0.34	0.37	0.46	0.29
2008	0.37	0.45	0.31	0.39	0.47	0.33	0.33	0.40	0.28
1975-2008	0.66	0.83	0.52	0.69	0.85	0.54	0.56	0.75	0.41

^a US Mortality Files, National Center for Health Statistics, Centers for Disease Control and Prevention.
Rates are per 100,000 and are age-adjusted to the 2000 US Std Population (19 age groups - Census P25-1130).
- Statistic not shown. Rate based on less than 16 cases for the time interval.

Table 9.7
Hodgkin Lymphoma

SEER Incidence^a and U.S. Death^b Rates, Age-Adjusted and Age-Specific Rates, by Race and Sex

	All Races			Whites			Blacks		
	Total	Males	Females	Total	Males	Females	Total	Males	Females
<u>SEER Incidence</u>									
<u>Age at Diagnosis</u>									
Age-Adjusted Rates, 2004-2008									
All ages	2.8	3.1	2.6	3.0	3.3	2.8	2.8	3.2	2.4
Under 65	2.6	2.8	2.4	2.8	3.0	2.6	2.7	3.1	2.4
65 and over	4.4	5.4	3.8	4.8	5.8	4.1	3.0	3.3	2.9
All ages (IARC world std) ^c	2.5	2.8	2.3	2.7	2.9	2.5	2.5	2.8	2.3
Age-Specific Rates, 2004-2008									
<1	-	-	-	-	-	-	-	-	-
1-4	-	-	-	-	-	-	-	-	-
5-9	0.5	0.7	0.3	0.5	0.7	0.3	0.7	1.1	-
10-14	1.3	1.4	1.2	1.3	1.4	1.3	1.3	1.2	1.4
15-19	3.0	3.0	3.1	3.3	3.2	3.4	2.5	2.2	2.7
20-24	4.5	4.3	4.7	4.8	4.5	5.1	3.3	3.3	3.2
25-29	4.3	4.0	4.5	4.5	4.1	4.8	4.7	4.7	4.6
30-34	3.9	4.0	3.8	4.2	4.3	4.1	4.5	4.8	4.3
35-39	3.1	3.4	2.7	3.3	3.6	3.0	3.3	4.2	2.5
40-44	3.0	3.4	2.5	3.2	3.7	2.7	3.0	3.6	2.5
45-49	2.5	3.0	2.0	2.6	3.0	2.2	3.1	4.4	1.9
50-54	2.5	3.1	1.8	2.5	3.1	1.8	3.8	5.0	2.7
55-59	2.6	3.2	2.0	2.8	3.4	2.1	2.5	2.8	2.4
60-64	3.0	3.7	2.3	3.1	4.0	2.4	3.2	3.6	2.9
65-69	3.9	4.7	3.1	4.1	4.9	3.4	3.7	4.5	3.1
70-74	4.4	5.1	3.8	4.9	5.8	4.1	3.0	-	3.8
75-79	4.9	5.6	4.4	5.3	6.2	4.7	2.5	-	-
80-84	5.1	6.6	4.1	5.4	6.9	4.4	4.3	-	-
85+	4.2	5.5	3.5	4.5	6.1	3.8	-	-	-
<u>U.S. Mortality</u>									
<u>Age at Death</u>									
Age-Adjusted Rates, 2004-2008									
All ages	0.4	0.5	0.3	0.4	0.5	0.3	0.4	0.5	0.3
Under 65	0.2	0.3	0.2	0.2	0.3	0.2	0.3	0.4	0.2
65 and over	1.6	2.0	1.3	1.7	2.1	1.4	1.0	1.2	0.8
All ages (IARC world std) ^c	0.3	0.4	0.2	0.3	0.4	0.2	0.3	0.4	0.2
Age-Specific Rates, 2004-2008									
<1	-	-	-	-	-	-	-	-	-
1-4	-	-	-	-	-	-	-	-	-
5-9	-	-	-	-	-	-	-	-	-
10-14	0.0	-	-	0.0	-	-	-	-	-
15-19	0.1	0.1	0.1	0.1	0.1	0.1	-	-	-
20-24	0.2	0.2	0.2	0.2	0.3	0.2	0.2	0.2	0.2
25-29	0.3	0.3	0.3	0.3	0.3	0.3	0.4	0.4	0.3
30-34	0.3	0.3	0.3	0.3	0.3	0.3	0.5	0.5	0.5
35-39	0.3	0.3	0.2	0.3	0.3	0.2	0.4	0.5	0.2
40-44	0.3	0.4	0.2	0.3	0.4	0.2	0.4	0.5	0.3
45-49	0.3	0.4	0.3	0.3	0.4	0.3	0.4	0.6	0.3
50-54	0.4	0.5	0.3	0.4	0.5	0.3	0.5	0.7	0.4
55-59	0.5	0.7	0.4	0.5	0.7	0.4	0.7	1.0	0.3
60-64	0.7	0.9	0.5	0.7	0.9	0.5	0.6	0.8	0.4
65-69	0.9	1.2	0.7	1.0	1.2	0.8	0.8	1.2	0.5
70-74	1.3	1.6	1.0	1.4	1.7	1.1	0.8	1.0	0.7
75-79	1.9	2.2	1.7	2.1	2.4	1.8	1.0	-	0.8
80-84	2.3	2.9	2.0	2.5	3.1	2.1	1.2	-	1.2
85+	2.4	3.3	1.9	2.4	3.5	2.0	1.4	-	1.4

^a SEER 17 areas. Rates are per 100,000 and are age-adjusted to the 2000 US Std Population (19 age groups - Census P25-1130), unless noted.

^b US Mortality Files, National Center for Health Statistics, Centers for Disease Control and Prevention.

^c Rates are per 100,000 and are age-adjusted to the 2000 US Std Population (19 age groups - Census P25-1130), unless noted.

- Rates are per 100,000 and are age-adjusted to the IARC world standard population.

- Statistic not shown. Rate based on less than 16 cases for the time interval.

Table 9.8
Hodgkin Lymphoma

5-Year Relative and Period Survival (Percent) by Race, Sex, Diagnosis Year and Age

	All Races			Whites			Blacks		
	Total	Males	Females	Total	Males	Females	Total	Males	Females
5-Year Relative Survival (Percent)									
Year of Diagnosis:									
1960-1963 ^a	-	-	-	40	34	48	-	-	-
1970-1973 ^a	-	-	-	67	66	69	-	-	-
1975-1977 ^b	72.0	70.3	74.3	72.3	70.5	74.5	70.2	68.6 ^f	73.3 ^f
1978-1980 ^b	71.7	70.3	73.5	71.8	69.8	74.3	70.6	74.8 ^f	63.1 ^f
1981-1983 ^b	74.2	72.9	75.9	74.6	73.8	75.6	71.6	69.2 ^f	76.0 ^f
1984-1986 ^b	78.4	76.6	80.7	78.9	77.0	81.2	74.7	75.7 ^f	72.2 ^f
1987-1989 ^b	79.3	76.7	82.6	79.8	76.9	83.5	72.2	71.8 ^f	72.7 ^f
1990-1992 ^b	81.7	79.2	84.6	82.8	81.1	84.9	73.6	63.8	84.1
1993-1995 ^b	81.7	79.1	84.7	82.1	79.9	84.7	78.2	73.9	82.8
1996-2000 ^b	85.1	83.6	86.8	85.5	83.9	87.4	81.7	80.4	83.3
2001-2007 ^b	86.3 ^e	85.5 ^e	87.3 ^e	87.5 ^e	87.0 ^e	88.1 ^e	80.9 ^e	77.2	84.4
5-Year Period Survival (Percent) ^{cd}									
2007	83.6	82.8	84.4	83.6	82.8	84.5	81.2	79.7	82.6
Stage Distribution (%) 2001-2007 ^c									
All Stages									
Number of cases	13,651	7,444	6,207	11,427	6,230	5,197	1,425	760	665
Percent	100%	100%	100%	100%	100%	100%	100%	100%	100%
Localized	18	19	17	18	19	17	21	21	20
Regional	41	36	46	41	37	47	33	29	38
Distant	36	40	32	36	39	31	42	46	38
Unstaged	5	5	5	5	5	5	4	4	4
5-Year Relative Survival (Percent), 2001-2007 ^c									
Age at Diagnosis:									
Ages <45	92.8	91.9	93.9	93.6	92.9	94.4	86.4	82.9	89.7
Ages 45-54	83.0	80.2	87.4	84.1	81.2	88.5	74.2	69.9	81.6 ^f
Ages 55-64	73.5	70.5	78.1	74.5	71.7	78.9	64.2 ^f	58.0 ^f	71.4 ^f
Ages 65-74	57.6	55.6	59.9	57.8	55.3	60.8	56.5 ^f	59.6 ^g	52.7 ^g
Ages 75+	37.9	38.4	37.0	39.2	39.2	38.8	23.6 ^g	-	-
Ages <65	89.5	87.7	91.8	90.3	88.6	92.4	82.6	78.4	87.2
Ages 65+	48.2	48.6	47.9	48.8	48.7	48.9	48.0 ^f	55.4 ^g	40.9 ^f
Stage:									
All Stages	83.9	82.8	85.2	84.3	83.3	85.4	80.4	77.2	83.7
Localized	89.8	90.3	89.1	89.9	90.3	89.3	90.3	91.6	88.1
Regional	90.4	89.7	91.0	90.7	90.0	91.3	85.8	82.6	88.1
Distant	73.7	72.8	75.1	74.0	73.6	74.5	72.1	66.9	78.5
Unstaged	82.2	83.1	81.0	82.9	83.2	82.0	68.5 ^f	69.8 ^g	66.6 ^g

^a Based on End Results data from a series of hospital registries and one population-based registry.^b SEER 9 areas (San Francisco, Connecticut, Detroit, Hawaii, Iowa, New Mexico, Seattle, Utah, Atlanta).
Based on follow-up of patients into 2008.^c SEER 17 areas (San Francisco, Connecticut, Detroit, Hawaii, Iowa, New Mexico, Seattle, Utah, Atlanta, San Jose-Monterey, Los Angeles, Alaska Native Registry, Rural Georgia, California excluding SF/SJM/LA, Kentucky, Louisiana and New Jersey).
Based on follow-up of patients into 2008.^d Period survival provides a 2007 estimate of survival by piecing together the most recent conditional survival estimates from several cohorts. It is computed here using three year calendar blocks (2005-2007: 0-1 year survival), (2004-2006: 1-2 year survival), (2003-2005: 2-3 year survival), (2002-2004: 3-4 year survival), (2001-2003: 4-5 years survival).
The difference between 1975-1977 and 2001-2007 is statistically significant (p<.05).^e The standard error is between 5 and 10 percentage points.^f The standard error is greater than 10 percentage points.^g -
Statistic could not be calculated due to fewer than 25 cases during the time period.

Table 9.9
Hodgkin Lymphoma

SEER^a Relative Survival (Percent)
By Year of Diagnosis

All Races, Males and Females

Survival Time	Year of Diagnosis																				
	1975- 1979	1980- 1984	1985- 1989	1990	1991	1992	1993	1994	1995	1996	1997	1998	1999	2000	2001	2002	2003	2004	2005	2006	2007
1-year	87.2	89.7	91.1	90.8	93.0	92.5	91.6	93.3	92.9	91.7	93.5	94.5	91.1	92.6	93.9	93.4	93.4	91.8	93.5	92.6	93.3
2-year	80.9	83.8	86.3	86.6	87.0	88.8	86.5	89.7	89.0	88.4	91.1	90.4	87.9	90.5	90.8	90.0	92.2	89.8	91.1	90.0	
3-year	76.7	80.2	83.1	84.3	84.5	87.3	83.6	86.2	86.7	86.7	89.4	88.3	85.8	88.7	88.4	88.5	90.2	87.6	90.4		
4-year	73.8	77.5	80.6	82.2	82.3	85.3	81.7	84.3	83.6	84.5	88.5	86.6	84.2	87.8	86.5	86.2	88.1	86.1			
5-year	71.5	74.8	79.1	81.1	80.1	83.9	79.7	83.0	82.2	83.2	87.4	84.8	83.4	86.4	85.1	85.1	87.4				
6-year	69.0	72.3	77.5	79.4	78.9	82.2	78.0	82.0	80.0	81.6	86.0	83.8	82.1	85.6	84.2	84.7					
7-year	67.2	70.7	75.1	77.0	77.5	81.3	76.1	81.3	78.8	80.0	85.3	82.9	80.8	84.5	84.2						
8-year	65.0	69.2	73.9	75.7	76.1	80.9	75.1	80.9	78.3	79.2	84.7	82.4	79.8	83.5							
9-year	63.0	67.8	73.1	74.5	75.6	79.8	74.2	79.5	77.0	78.1	84.4	81.4	79.0								
10-year	61.7	66.7	72.5	73.6	74.8	78.8	74.0	79.3	76.5	76.7	83.9	80.1									
11-year	60.4	65.7	71.5	73.1	73.7	77.8	73.6	79.2	75.7	75.6	83.3										
12-year	59.4	64.6	70.7	71.9	73.5	77.1	72.6	78.2	75.5	74.7											
13-year	58.6	63.7	69.4	71.7	72.6	76.3	71.5	77.3	75.4												
14-year	57.4	62.5	68.5	71.5	72.0	75.8	71.4	77.0													
15-year	56.4	61.7	67.4	70.9	71.3	75.2	71.2														
16-year	55.5	60.7	66.6	70.9	70.3	75.2															
17-year	54.6	59.3	66.0	69.8	69.9																
18-year	53.7	58.4	65.3	68.9																	
19-year	53.0	57.8	64.7																		
20-year	52.0	56.8																			

^a Based on the SEER 9 areas (San Francisco, Connecticut, Detroit, Hawaii, Iowa, New Mexico, Seattle, Utah, and Atlanta).

Table 9.10
Hodgkin Lymphoma

SEER^a Relative Survival (Percent)
By Year of Diagnosis

All Races, Males

Year of Diagnosis

	1975- 1979	1980- 1984	1985- 1989	1990	1991	1992	1993	1994	1995	1996	1997	1998	1999	2000	2001	2002	2003	2004	2005	2006	2007
Survival Time																					
1-year	86.1	89.6	90.0	90.7	92.9	90.9	89.3	93.6	92.2	92.9	92.1	94.2	89.2	90.8	92.9	91.0	93.0	89.7	93.5	91.8	92.3
2-year	80.4	83.8	84.8	84.7	86.3	86.4	83.5	88.7	88.6	89.1	89.7	90.9	86.5	88.4	89.2	88.5	92.1	88.3	91.2	89.0	
3-year	75.5	80.4	81.5	82.6	82.8	84.6	80.2	85.5	85.4	87.1	87.6	88.8	83.7	85.4	86.4	86.9	90.1	86.6	90.3		
4-year	71.9	77.4	78.5	80.7	79.7	82.4	77.9	83.1	81.0	85.1	87.1	86.4	82.7	83.7	85.0	84.8	86.7	85.8			
5-year	69.4	74.1	76.6	80.2	76.8	80.8	75.3	81.8	80.2	83.0	86.1	84.4	82.4	81.9	83.5	83.7	86.0				
6-year	66.6	71.5	74.8	78.6	75.6	78.7	72.9	80.7	78.5	81.8	83.7	83.5	80.3	80.9	81.9	82.9					
7-year	64.5	69.8	71.8	75.7	73.4	78.6	71.7	80.5	77.4	79.7	83.0	82.1	78.4	80.0	81.6						
8-year	62.4	68.2	70.4	74.7	71.2	77.5	70.3	80.3	76.3	78.6	82.3	81.6	77.3	78.8							
9-year	60.0	67.0	69.1	73.5	70.9	76.9	69.1	78.5	75.1	77.5	82.2	80.2	76.1								
10-year	58.9	65.6	68.4	72.5	70.4	75.7	69.1	78.5	75.1	75.5	81.3	78.1									
11-year	57.5	64.7	67.0	72.1	69.6	74.5	68.7	78.5	74.3	74.0	80.6										
12-year	56.4	63.3	65.9	70.7	69.1	73.5	67.7	77.9	74.3	72.4											
13-year	55.8	62.5	64.2	70.4	67.7	72.7	66.0	77.4	74.3												
14-year	54.3	61.2	63.2	70.4	67.4	72.7	65.7	77.2													
15-year	53.2	60.4	62.0	69.6	66.9	72.1	64.9														
16-year	52.3	59.4	61.0	69.3	65.8	72.1															
17-year	51.1	58.1	60.5	67.8	65.8																
18-year	50.1	56.9	59.8	66.7																	
19-year	49.4	56.5	59.3																		
20-year	48.4	55.2																			

^a Based on the SEER 9 areas (San Francisco, Connecticut, Detroit, Hawaii, Iowa, New Mexico, Seattle, Utah, and Atlanta).

Table 9.11
Hodgkin Lymphoma

SEER^a Relative Survival (Percent)
By Year of Diagnosis

All Races, Females

Year of Diagnosis

	1975- 1979	1980- 1984	1985- 1989	1990	1991	1992	1993	1994	1995	1996	1997	1998	1999	2000	2001	2002	2003	2004	2005	2006	2007
Survival Time																					
1-year	88.7	89.9	92.5	90.9	93.1	94.3	94.4	92.9	93.7	90.0	95.1	94.9	93.2	95.1	95.3	95.9	93.8	93.9	93.4	93.6	94.6
2-year	81.6	83.7	88.3	89.0	87.9	91.5	90.0	90.7	89.7	87.4	92.5	89.9	89.4	93.5	92.7	91.8	92.2	91.1	90.9	91.2	
3-year	78.3	79.8	85.2	86.3	86.8	90.2	87.7	87.0	88.1	86.1	91.2	87.7	88.0	93.0	90.9	90.2	90.2	88.6	90.4		
4-year	76.2	77.7	83.3	83.9	85.6	88.4	86.0	85.6	86.7	83.8	89.7	86.8	85.7	93.0	88.5	87.7	89.6	86.2			
5-year	74.3	75.7	82.2	82.2	84.4	87.3	84.9	84.3	84.7	83.4	88.5	85.4	84.3	92.5	87.0	86.6	89.0				
6-year	72.3	73.5	80.9	80.4	83.0	85.9	83.8	83.5	81.8	81.3	88.4	84.0	83.9	92.1	86.8	86.5					
7-year	70.8	71.8	79.2	78.6	82.6	84.1	81.3	82.0	80.6	80.3	87.6	83.8	83.1	90.8	86.8						
8-year	68.5	70.6	78.4	76.9	82.2	84.1	80.8	81.6	80.6	80.0	87.1	83.2	82.6	90.0							
9-year	66.9	69.0	78.1	75.6	81.5	83.0	80.1	80.7	79.4	78.7	86.6	82.7	82.1								
10-year	65.4	68.2	77.5	74.8	80.0	82.1	79.8	80.0	78.1	78.2	86.4	82.3									
11-year	64.2	67.1	77.1	74.2	78.9	81.5	79.2	79.7	77.3	77.4	86.0										
12-year	63.5	66.3	76.6	73.2	78.9	80.8	78.2	78.3	76.8	77.2											
13-year	62.5	65.3	75.9	73.0	78.9	80.2	77.9	77.1	75.9												
14-year	61.4	64.3	75.2	72.6	77.9	79.0	77.9	76.7													
15-year	60.6	63.3	74.1	72.5	76.7	78.2	77.9														
16-year	59.8	62.3	73.4	72.5	75.7	77.9															
17-year	59.3	60.9	72.7	72.2	74.3																
18-year	58.4	60.2	72.2	71.8																	
19-year	57.8	59.5	71.4																		
20-year	56.7	58.9																			

^a Based on the SEER 9 areas (San Francisco, Connecticut, Detroit, Hawaii, Iowa, New Mexico, Seattle, Utah, and Atlanta).

Table 9.12
Hodgkin Lymphoma

Risk of Being Diagnosed With Cancer in 10, 20 and 30 Years,
Lifetime Risk of Being Diagnosed with Cancer Given Alive and Cancer-Free at Current Age, and
Lifetime Risk of Dying from Cancer Given Alive at Current Age
Both Sexes, 2006-2008 By Race/Ethnicity

Race/ Ethnicity	Current Age	Risk of Being Diagnosed with Cancer					Risk of Dying from Cancer	Race/ Ethnicity	Current Age	Risk of Being Diagnosed with Cancer					Risk of Dying from Cancer
		+10 yrs	+20 yrs	+30 yrs	Ever	+10 yrs				+20 yrs	+30 yrs	Ever			
All Races	0	0.00	0.03	0.07	0.23	0.04	Asian/ Pacific Islander	0	0.00	0.02	0.05	0.12	0.03		
	10	0.02	0.07	0.10	0.23	0.04		10	0.02	0.05	0.06	0.12	0.03		
	20	0.04	0.08	0.10	0.21	0.04		20	0.03	0.04	0.05	0.10	0.02		
	30	0.03	0.06	0.08	0.17	0.04		30	0.01	0.02	0.03	0.08	0.02		
	40	0.03	0.05	0.08	0.14	0.04		40	0.01	0.02	0.03	0.06	0.02		
	50	0.03	0.06	0.09	0.11	0.03		50	0.01	0.02	0.04	0.05	0.02		
	60	0.03	0.07	0.09	0.09	0.03		60	0.02	0.03	0.05	0.05	0.02		
	70	0.04	0.06	-	0.07	0.03		70	0.02	0.03	-	0.03	0.02		
80	0.04	-	-	0.04	0.02	80	0.02	-	-	0.02	0.02				
White	0	0.00	0.03	0.07	0.25	0.04	American Indian/ Alaska Native ^a	0	0.01	0.01	0.02	0.08	0.02		
	10	0.02	0.07	0.11	0.25	0.04		10	0.01	0.02	0.03	0.08	0.02		
	20	0.05	0.08	0.11	0.23	0.04		20	0.01	0.02	0.03	0.07	0.02		
	30	0.04	0.06	0.09	0.18	0.04		30	0.01	0.02	0.02	0.06	0.02		
	40	0.03	0.05	0.09	0.15	0.04		40	0.01	0.01	0.02	0.05	0.02		
	50	0.03	0.06	0.10	0.12	0.04		50	0.00	0.01	0.01	0.04	0.02		
	60	0.04	0.07	0.10	0.10	0.03		60	0.01	0.01	0.01	0.05	0.01		
	70	0.04	0.07	-	0.07	0.03		70	0.00	0.01	-	0.04	0.01		
80	0.04	-	-	0.04	0.02	80	0.01	-	-	0.06	0.00				
Black	0	0.00	0.02	0.06	0.20	0.03	Hispanic ^b	0	0.00	0.02	0.05	0.23	0.05		
	10	0.02	0.06	0.10	0.20	0.03		10	0.02	0.04	0.07	0.23	0.05		
	20	0.04	0.08	0.11	0.18	0.03		20	0.03	0.05	0.07	0.21	0.05		
	30	0.04	0.06	0.09	0.15	0.03		30	0.02	0.04	0.07	0.19	0.05		
	40	0.03	0.06	0.08	0.11	0.03		40	0.02	0.04	0.08	0.16	0.05		
	50	0.03	0.06	0.08	0.09	0.02		50	0.03	0.06	0.11	0.15	0.05		
	60	0.03	0.05	0.06	0.06	0.02		60	0.04	0.09	0.12	0.13	0.04		
	70	0.02	0.04	-	0.04	0.02		70	0.05	0.09	-	0.10	0.04		
80	0.02	-	-	0.02	0.01	80	0.04	-	-	0.06	0.03				

Devcan Version 6.6.0, October 2011, National Cancer Institute (<http://surveillance.cancer.gov/devcan/>).

Source: Incidence data are from the SEER 17 areas (San Francisco, Connecticut, Detroit, Hawaii, Iowa, New Mexico, Seattle, Utah, Atlanta, San Jose-Monterey, Los Angeles, Alaska Native Registry, Rural Georgia, California excluding SF/SJM/LA, Kentucky, Louisiana and New Jersey). Mortality data are from the NCHS public use data file for the total US.

^a Underlying incidence and mortality data for American Indian/Alaska Native are based on the CHSDA (Contract Health Service Delivery Area) counties.

^b Hispanic is not mutually exclusive from whites, blacks, Asian/Pacific Islanders, and American Indians/Alaska Natives.

Underlying incidence data for Hispanics are based on NHIA and exclude cases from the Alaska Native Registry.

Underlying mortality data for Hispanics exclude deaths from the District of Columbia, Minnesota, New Hampshire and North Dakota.

- Statistic could not be calculated.

A percent of 0.00 represents a value that is below 0.005.

Table 9.13
Hodgkin Lymphoma

Risk of Being Diagnosed With Cancer in 10, 20 and 30 Years,
Lifetime Risk of Being Diagnosed with Cancer Given Alive and Cancer-Free at Current Age, and
Lifetime Risk of Dying from Cancer Given Alive at Current Age
Males, 2006-2008 By Race/Ethnicity

Race/ Ethnicity	Current Age	Risk of Being Diagnosed with Cancer				Risk of Dying from Cancer	Race/ Ethnicity	Current Age	Risk of Being Diagnosed with Cancer				Risk of Dying from Cancer
		+10 yrs	+20 yrs	+30 yrs	Ever				+10 yrs	+20 yrs	+30 yrs	Ever	
All Races	0	0.00	0.03	0.07	0.25	0.05	Asian/ Pacific Islander	0	0.00	0.02	0.05	0.14	0.03
	10	0.02	0.06	0.10	0.25	0.05		10	0.02	0.05	0.06	0.14	0.03
	20	0.04	0.08	0.11	0.23	0.05		20	0.03	0.05	0.06	0.13	0.03
	30	0.04	0.07	0.10	0.19	0.04		30	0.01	0.02	0.04	0.09	0.03
	40	0.03	0.06	0.10	0.16	0.04		40	0.01	0.02	0.05	0.08	0.03
	50	0.03	0.07	0.10	0.13	0.04		50	0.01	0.04	0.05	0.07	0.03
	60	0.04	0.08	0.10	0.11	0.04		60	0.02	0.04	0.06	0.06	0.03
	70	0.05	0.07	-	0.08	0.03		70	0.02	0.04	-	0.04	0.03
80	0.04	-	-	0.05	0.02	80	0.03	-	-	0.03	0.02		
White	0	0.00	0.03	0.07	0.27	0.05	American Indian/ Alaska Native ^a	0	0.01	0.01	0.02	0.04	0.02
	10	0.02	0.07	0.11	0.27	0.05		10	0.01	0.02	0.02	0.03	0.02
	20	0.04	0.08	0.11	0.24	0.05		20	0.01	0.02	0.02	0.02	0.02
	30	0.04	0.07	0.10	0.20	0.05		30	0.01	0.02	0.02	0.02	0.02
	40	0.03	0.06	0.10	0.17	0.04		40	0.01	0.01	0.01	0.01	0.02
	50	0.03	0.07	0.11	0.14	0.04		50	0.00	0.00	0.00	0.00	0.02
	60	0.04	0.08	0.11	0.11	0.04		60	0.00	0.00	0.00	0.00	0.02
	70	0.05	0.08	-	0.08	0.03		70	0.00	0.00	-	0.00	0.01
80	0.04	-	-	0.05	0.03	80	0.00	-	-	0.00	0.00		
Black	0	0.00	0.02	0.06	0.23	0.03	Hispanic ^b	0	0.01	0.02	0.05	0.24	0.05
	10	0.02	0.06	0.11	0.23	0.04		10	0.02	0.04	0.07	0.24	0.05
	20	0.04	0.09	0.12	0.21	0.04		20	0.02	0.05	0.07	0.22	0.05
	30	0.04	0.08	0.12	0.17	0.03		30	0.02	0.05	0.08	0.20	0.05
	40	0.04	0.07	0.10	0.13	0.03		40	0.02	0.05	0.09	0.18	0.05
	50	0.04	0.07	0.08	0.10	0.03		50	0.03	0.07	0.13	0.16	0.05
	60	0.04	0.05	0.07	0.07	0.02		60	0.04	0.10	0.14	0.14	0.04
	70	0.02	0.04	-	0.04	0.01		70	0.07	0.11	-	0.11	0.04
80	0.04	-	-	0.04	0.01	80	0.05	-	-	0.05	0.03		

Devcan Version 6.6.0, October 2011, National Cancer Institute (<http://surveillance.cancer.gov/devcan/>).

Source: Incidence data are from the SEER 17 areas (San Francisco, Connecticut, Detroit, Hawaii, Iowa, New Mexico, Seattle, Utah, Atlanta, San Jose-Monterey, Los Angeles, Alaska Native Registry, Rural Georgia, California excluding SF/SJM/LA, Kentucky, Louisiana and New Jersey). Mortality data are from the NCHS public use data file for the total US.

^a Underlying incidence and mortality data for American Indian/Alaska Native are based on the CHSDA (Contract Health Service Delivery Area) counties.

^b Hispanic is not mutually exclusive from whites, blacks, Asian/Pacific Islanders, and American Indians/Alaska Natives.

Underlying incidence data for Hispanics are based on NHIA and exclude cases from the Alaska Native Registry.

Underlying mortality data for Hispanics exclude deaths from the District of Columbia, Minnesota, New Hampshire and North Dakota.

- Statistic could not be calculated.

A percent of 0.00 represents a value that is below 0.005.

Table 9.14
Hodgkin Lymphoma

Risk of Being Diagnosed With Cancer in 10, 20 and 30 Years,
Lifetime Risk of Being Diagnosed with Cancer Given Alive and Cancer-Free at Current Age, and
Lifetime Risk of Dying from Cancer Given Alive at Current Age
Females, 2006-2008 By Race/Ethnicity

Race/ Ethnicity	Current Age	Risk of Being Diagnosed with Cancer				Risk of Dying from Cancer	Race/ Ethnicity	Current Age	Risk of Being Diagnosed with Cancer				Risk of Dying from Cancer
		+10 yrs	+20 yrs	+30 yrs	Ever				+10 yrs	+20 yrs	+30 yrs	Ever	
All Races	0	0.00	0.02	0.07	0.21	0.04	Asian/ Pacific Islander	0	0.00	0.02	0.04	0.10	0.02
	10	0.02	0.07	0.10	0.21	0.04		10	0.01	0.04	0.06	0.10	0.02
	20	0.04	0.08	0.10	0.19	0.04		20	0.03	0.04	0.05	0.09	0.02
	30	0.03	0.05	0.07	0.15	0.03		30	0.01	0.02	0.03	0.06	0.01
	40	0.02	0.04	0.06	0.12	0.03		40	0.01	0.01	0.02	0.05	0.01
	50	0.02	0.04	0.07	0.10	0.03		50	0.01	0.01	0.03	0.04	0.01
	60	0.03	0.06	0.08	0.08	0.03		60	0.01	0.02	0.03	0.03	0.01
	70	0.03	0.06	-	0.06	0.03		70	0.02	0.03	-	0.03	0.01
80	0.03	-	-	0.04	0.02	80	0.01	-	-	0.01	0.01		
White	0	0.00	0.03	0.07	0.23	0.04	American Indian/ Alaska Native ^a	0	0.01	0.01	0.02	0.12	0.01
	10	0.02	0.07	0.11	0.23	0.04		10	0.01	0.02	0.03	0.11	0.01
	20	0.05	0.08	0.11	0.21	0.04		20	0.01	0.03	0.04	0.11	0.01
	30	0.04	0.06	0.08	0.16	0.04		30	0.02	0.02	0.03	0.10	0.01
	40	0.02	0.04	0.07	0.13	0.03		40	0.01	0.01	0.02	0.08	0.01
	50	0.02	0.05	0.08	0.11	0.03		50	0.00	0.01	0.01	0.08	0.01
	60	0.03	0.06	0.09	0.09	0.03		60	0.01	0.01	0.02	0.08	0.01
	70	0.04	0.06	-	0.07	0.03		70	0.00	0.01	-	0.07	0.01
80	0.03	-	-	0.04	0.02	80	0.02	-	-	0.10	0.00		
Black	0	0.00	0.02	0.06	0.18	0.03	Hispanic ^b	0	0.00	0.02	0.05	0.21	0.05
	10	0.02	0.06	0.09	0.18	0.03		10	0.02	0.04	0.07	0.21	0.05
	20	0.04	0.07	0.09	0.16	0.03		20	0.03	0.05	0.06	0.20	0.05
	30	0.03	0.05	0.07	0.12	0.02		30	0.02	0.04	0.06	0.17	0.05
	40	0.02	0.04	0.07	0.09	0.02		40	0.01	0.03	0.07	0.15	0.04
	50	0.03	0.05	0.07	0.08	0.02		50	0.02	0.05	0.09	0.13	0.04
	60	0.03	0.05	0.06	0.06	0.02		60	0.04	0.07	0.10	0.12	0.04
	70	0.02	0.04	-	0.04	0.02		70	0.04	0.07	-	0.09	0.04
80	0.01	-	-	0.02	0.01	80	0.04	-	-	0.06	0.03		

Devcan Version 6.6.0, October 2011, National Cancer Institute (<http://surveillance.cancer.gov/devcan/>).

Source: Incidence data are from the SEER 17 areas (San Francisco, Connecticut, Detroit, Hawaii, Iowa, New Mexico, Seattle, Utah, Atlanta, San Jose-Monterey, Los Angeles, Alaska Native Registry, Rural Georgia, California excluding SF/SJM/LA, Kentucky, Louisiana and New Jersey). Mortality data are from the NCHS public use data file for the total US.

^a Underlying incidence and mortality data for American Indian/Alaska Native are based on the CHSDA (Contract Health Service Delivery Area) counties.

^b Hispanic is not mutually exclusive from whites, blacks, Asian/Pacific Islanders, and American Indians/Alaska Natives.

Underlying incidence data for Hispanics are based on NHIA and exclude cases from the Alaska Native Registry.

Underlying mortality data for Hispanics exclude deaths from the District of Columbia, Minnesota, New Hampshire and North Dakota.

- Statistic could not be calculated.

A percent of 0.00 represents a value that is below 0.005.

Table 9.15
Hodgkin Lymphoma

SEER Incidence and U.S. Mortality
Age-Adjusted Rates and Trends^a
By Race/Ethnicity and Sex

SEER Incidence	SEER 17 Areas ^b			SEER 13 Areas ^b			SEER 9 Areas ^b		
	Rate 2004-2008			Trend 1999-2008 ^c			Trend 1999-2008 ^d		
	Rate per 100,000 persons			AAPC (%)			AAPC (%)		
RACE/ETHNICITY	Total	Males	Females	Total	Males	Females	Total	Males	Females
All Races	2.8	3.1	2.6	0.3	0.3	0.2	-0.1	0.9	0.4*
White	3.0	3.3	2.8	0.2	0.2	0.2	-0.1	-0.4*	0.3*
White Hispanic ^e	2.5	2.8	2.2	-0.1	-0.6	0.4	-	-	-
White Non-Hispanic ^e	3.3	3.6	3.0	0.4*	0.4	0.3	-	-	-
Black	2.8	3.2	2.4	1.1*	1.4*	0.8	1.2*	0.5	2.3*
Asian/Pacific Islander	1.3	1.5	1.1	2.9*	2.4*	3.6*	-	-	-
Amer Ind/Alaska Nat ^f	0.9	1.0	-	-	-	-	-	-	-
Hispanic ^e	2.4	2.7	2.2	-0.1	-0.5	0.4	-	-	-
<u>U.S. Mortality^g</u>									
U.S. Mortality ^g	Rate 2004-2008			Trend 1999-2008 ^h					
	Rate per 100,000 persons			AAPC (%)					
	Total	Males	Females	Total	Males	Females			
RACE/ETHNICITY	Total	Males	Females	Total	Males	Females			
All Races	0.4	0.5	0.3	-2.8*	-2.3*	-2.6*			
White	0.4	0.5	0.3	-2.7*	-2.2*	-2.6*			
White Hispanic ^e	0.5	0.6	0.4	-3.2*	-3.8*	-2.6*			
White Non-Hispanic ^e	0.4	0.5	0.3	-2.5*	-2.5*	-2.5*			
Black	0.4	0.5	0.3	-3.0*	-3.5*	-2.5*			
Asian/Pacific Islander	0.2	0.2	0.2	-	-	-			
Amer Ind/Alaska Nat									
Total U.S.	0.1	0.3	-	-	-	-			
CHSDA Counties	-	-	-	-	-	-			
Non-CHSDA Counties	-	-	-	-	-	-			
Hispanic ^e	0.4	0.5	0.3	-3.2*	-3.7*	-2.6*			

The AAPC is the Average Annual Percent Change over the time interval. The AAPCs are calculated by the Joinpoint Regression Program Version 3.5, April 2011, National Cancer Institute.

- Statistic not shown. Rate based on less than 16 cases for the time interval.

Trend based on less than 10 cases for at least one year within the time interval.

a Rates are age-adjusted to the 2000 US Std Population (19 age groups - Census P25-1130). Trends

are based on rates age-adjusted to the 2000 US Std Population (19 age groups - Census P25-1130).

b The SEER 9 areas are San Francisco, Connecticut, Detroit, Hawaii, Iowa, New Mexico, Seattle, Utah and Atlanta.

The SEER 13 areas comprise the SEER 9 areas plus San Jose-Monterey, Los Angeles, the Alaska Native Registry and Rural Georgia.

The SEER 17 areas comprise the SEER 13 areas plus California excluding SF/SJM/LA, Kentucky, Louisiana and New Jersey.

c The 1999-2008 AAPC estimates are based on a Joinpoint analysis with up to 3 Joinpoints over diagnosis years 1992-2008.

d The 1999-2008 AAPC estimates are based on a Joinpoint analysis with up to 5 Joinpoints over diagnosis years 1975-2008.

e Hispanic and Non-Hispanic are not mutually exclusive from whites, blacks, Asian/Pacific Islanders, and American Indians/Alaska Natives. Incidence data for Hispanics and Non-Hispanics are based on NHIA and exclude cases from the Alaska Native Registry. The 2004-2008 Hispanic and Non-Hispanic death rates exclude deaths from the District of Columbia and North Dakota. The 1999-2008 Hispanic and Non-Hispanic mortality trends exclude deaths from Connecticut, the District of Columbia, Maine, Maryland, Minnesota, New Hampshire, New York, North Dakota, Oklahoma and Vermont.

f Incidence data for American Indian/Alaska Native are based on the CHSDA(Contract Health Service Delivery Area) counties.

g US Mortality Files, National Center for Health Statistics, CDC.

h The 1999-2008 mortality AAPCs are based on a Joinpoint analysis using years of death 1992-2008.

* The APC is significantly different from zero (p<.05).

Table 9.16
Hodgkin Lymphoma

Age-Adjusted SEER Incidence Rates^a
By Registry, Race and Sex

	All Races			Whites			Blacks		
	Total	Males	Females	Total	Males	Females	Total	Males	Females
<u>SEER Incidence Rates^a, 2004-2008</u>									
Atlanta & Rural Georgia	2.73	2.95	2.56	2.90	3.03	2.83	2.80	3.08	2.52
Atlanta	2.73	2.95	2.56	2.90	3.04	2.83	2.79	3.09	2.51
Rural Georgia	2.51	-	-	-	-	-	-	-	-
California	2.59	2.89	2.34	2.81	3.10	2.55	2.58	2.86	2.36
Greater Bay Area	2.73	2.96	2.54	3.06	3.24	2.94	3.45	4.39	2.65
San Francisco-Oakland	2.77	3.14	2.46	3.10	3.37	2.88	3.56	4.54	2.79
San Jose-Monterey	2.66	2.65	2.72	3.01	3.02	3.08	-	-	-
Los Angeles	2.42	2.74	2.14	2.69	3.01	2.39	2.20	2.43	2.02
Greater California	2.64	2.94	2.37	2.80	3.10	2.53	2.50	2.47	2.54
Connecticut	3.52	3.81	3.27	3.66	3.97	3.38	3.21	3.10	3.30
Detroit	3.45	3.77	3.19	3.60	3.74	3.52	3.26	4.07	2.63
Hawaii	2.12	2.12	2.17	3.06	3.14	3.09	-	-	-
Iowa	3.13	3.62	2.67	3.15	3.62	2.71	-	-	-
Kentucky	2.73	3.30	2.20	2.74	3.34	2.19	2.90	3.09	2.67
Louisiana	3.06	3.49	2.68	3.26	3.72	2.82	2.58	2.99	2.25
New Jersey	3.32	3.54	3.16	3.54	3.62	3.52	2.90	3.60	2.29
New Mexico	2.38	2.57	2.20	2.53	2.66	2.41	-	-	-
Seattle-Puget Sound	3.06	3.53	2.64	3.28	3.77	2.83	2.82	2.47	3.24
Utah	2.57	3.08	2.11	2.68	3.19	2.22	-	-	-
9 SEER Areas ^b	2.97	3.31	2.67	3.17	3.49	2.89	3.04	3.49	2.66
11 SEER Areas ^b	2.81	3.12	2.54	3.04	3.34	2.77	2.85	3.26	2.50
13 SEER Areas ^b	2.81	3.12	2.53	3.04	3.34	2.77	2.85	3.26	2.50
17 SEER Areas ^b	2.83	3.15	2.55	3.02	3.32	2.75	2.78	3.16	2.45

^a Rates are per 100,000 and are age-adjusted to the 2000 US Std Population (19 age groups - Census P25-1130)

^b The SEER 9 areas are San Francisco, Connecticut, Detroit, Hawaii, Iowa, New Mexico, Seattle, Utah and Atlanta.

The SEER 11 areas comprise the SEER 9 areas plus San Jose-Monterey and Los Angeles.

The SEER 13 areas comprise the SEER 11 areas plus the Alaska Native Registry and Rural Georgia.

The SEER 17 areas comprise the SEER 13 areas plus California excluding SF/SJM/LA, Kentucky, Louisiana and New Jersey.

- Statistic not shown. Rate based on less than 16 cases for the time interval.

Table 9.17
Hodgkin Lymphoma

Age-Adjusted SEER Death Rates^a
By Registry, Race and Sex

	All Races			Whites			Blacks		
	Total	Males	Females	Total	Males	Females	Total	Males	Females
<u>SEER Death Rates^a, 2004-2008</u>									
Atlanta & Rural Georgia	0.44	0.57	0.36	0.47	0.58	0.41	0.36	-	-
Atlanta	0.43	0.57	0.35	0.46	0.58	0.40	0.31	-	-
Rural Georgia	-	-	-	-	-	-	-	-	-
California	0.42	0.52	0.34	0.47	0.58	0.39	0.33	0.46	-
Greater Bay Area	0.38	0.44	0.35	0.44	0.50	0.42	-	-	-
San Francisco-Oakland	0.35	0.40	0.32	0.39	0.43	0.38	-	-	-
San Jose-Monterey	0.44	0.53	0.40	0.53	0.62	0.49	-	-	-
Los Angeles	0.38	0.47	0.30	0.45	0.56	0.35	-	-	-
Greater California	0.46	0.58	0.36	0.49	0.61	0.39	0.43	-	-
Connecticut	0.44	0.54	0.34	0.47	0.57	0.38	-	-	-
Detroit	0.42	0.60	0.29	0.44	0.59	0.31	0.41	-	-
Hawaii	0.23	-	-	-	-	-	-	-	-
Iowa	0.40	0.35	0.42	0.41	0.36	0.44	-	-	-
Kentucky	0.45	0.59	0.33	0.45	0.57	0.34	-	-	-
Louisiana	0.54	0.64	0.46	0.59	0.73	0.49	0.38	-	-
New Jersey	0.48	0.60	0.39	0.50	0.64	0.39	0.49	-	0.53
New Mexico	0.33	0.44	-	0.33	0.41	-	-	-	-
Seattle-Puget Sound	0.40	0.54	0.29	0.42	0.57	0.31	-	-	-
Utah	0.33	0.44	-	0.33	0.44	-	-	-	-
9 SEER Areas ^b	0.38	0.47	0.31	0.41	0.49	0.34	0.36	0.58	0.22
11 SEER Areas ^b	0.39	0.47	0.31	0.42	0.51	0.35	0.33	0.50	0.22
13 SEER Areas ^b	0.39	0.47	0.31	0.42	0.51	0.35	0.34	0.50	0.23
17 SEER Areas ^b	0.43	0.53	0.34	0.46	0.57	0.37	0.39	0.49	0.31
Total U.S.	0.41	0.51	0.33	0.43	0.53	0.35	0.39	0.49	0.31

^a US Mortality Files, National Center for Health Statistics, Centers for Disease Control and Prevention. Rates are per 100,000 and are age-adjusted to the 2000 US Std Population (19 age groups - Census P25-1130).

^b The SEER 9 areas are San Francisco, Connecticut, Detroit, Hawaii, Iowa, New Mexico, Seattle, Utah and Atlanta. The SEER 11 areas comprise the SEER 9 areas plus San Jose-Monterey and Los Angeles. The SEER 13 areas comprise the SEER 11 areas plus the Alaska Native Registry and Rural Georgia. The SEER 17 areas comprise the SEER 13 areas plus California excluding SF/SJM/LA, Kentucky, Louisiana and New Jersey.

- Statistic not shown. Rate based on less than 16 cases for the time interval.

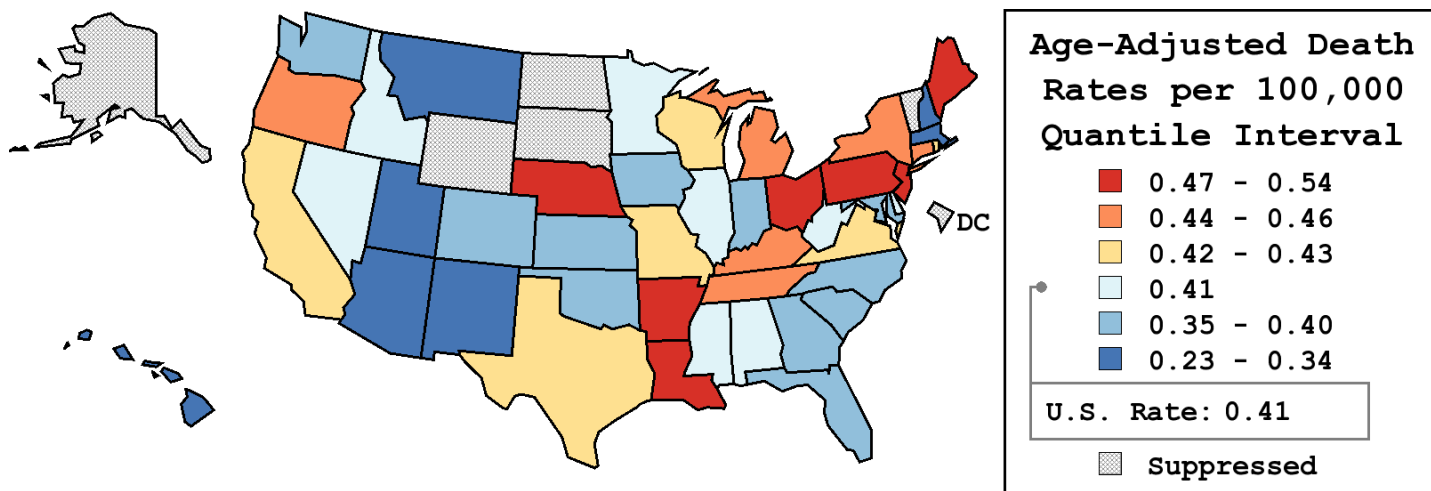
Table 9.18
Hodgkin Lymphoma

Age-Adjusted Cancer Death^a Rates By State, All Races, 2004-2008

Males and Females

State	Rate	SE	Rank	PD
TOTAL U.S.	0.41	0.01		
High Five States				
Louisiana	0.54	0.05	(01)	29.28 ^c
Arkansas	0.49	0.06	(02)	17.85 ^c
New Jersey	0.48	0.03	(03)	16.25 ^c
Nebraska	0.48	0.07	(04)	15.87 ^c
Maine	0.47	0.08	(05)	13.64
Low Five States				
Utah	0.33	0.06	(41)	-20.29 ^c
New Mexico	0.33	0.06	(42)	-20.58 ^c
Montana	0.31	0.08	(43)	-24.83 ^c
New Hampshire	0.30	0.07	(44)	-27.67 ^c
Hawaii	0.23	0.06	(45)	-45.00 ^c

State	Rate	SE	Rank	PD	State	Rate	SE	Rank	PD
Alabama	0.41	0.04	(27)	-1.91	Montana	0.31	0.08	(43)	-24.83 ^c
Alaska	-	-	(-)	-	Nebraska	0.48	0.07	(04)	15.87 ^c
Arizona	0.34	0.03	(39)	-18.50 ^c	Nevada	0.41	0.06	(22)	0.05
Arkansas	0.49	0.06	(02)	17.85 ^c	New Hampshire	0.30	0.07	(44)	-27.67 ^c
California	0.42	0.02	(16)	2.17	New Jersey	0.48	0.03	(03)	16.25 ^c
Colorado	0.37	0.04	(36)	-11.29	New Mexico	0.33	0.06	(42)	-20.58 ^c
Connecticut	0.44	0.05	(13)	5.37	New York	0.44	0.02	(11)	6.43
Delaware	0.41	0.10	(26)	-1.83	North Carolina	0.39	0.03	(34)	-6.27
D.C.	-	-	(-)	-	North Dakota	-	-	(-)	-
Florida	0.40	0.02	(29)	-4.32	Ohio	0.47	0.03	(07)	13.50
Georgia	0.36	0.03	(37)	-12.35	Oklahoma	0.39	0.05	(32)	-4.82
Hawaii	0.23	0.06	(45)	-45.00 ^c	Oregon	0.44	0.05	(10)	7.20
Idaho	0.41	0.08	(24)	-0.53	Pennsylvania	0.47	0.03	(06)	13.51
Illinois	0.41	0.03	(25)	-0.67	Rhode Island	0.42	0.08	(17)	2.15
Indiana	0.35	0.03	(38)	-16.09 ^c	South Carolina	0.39	0.04	(33)	-6.15
Iowa	0.40	0.05	(31)	-4.65	South Dakota	-	-	(-)	-
Kansas	0.40	0.05	(28)	-3.34	Tennessee	0.46	0.04	(08)	10.63
Kentucky	0.45	0.05	(09)	8.15	Texas	0.42	0.02	(18)	1.99
Louisiana	0.54	0.05	(01)	29.28 ^c	Utah	0.33	0.06	(41)	-20.29 ^c
Maine	0.47	0.08	(05)	13.64	Vermont	-	-	(-)	-
Maryland	0.40	0.04	(30)	-4.58	Virginia	0.42	0.03	(19)	0.28
Massachusetts	0.33	0.03	(40)	-19.97 ^c	Washington	0.39	0.03	(35)	-7.04
Michigan	0.44	0.03	(12)	5.67	West Virginia	0.41	0.06	(23)	-0.05
Minnesota	0.41	0.04	(20)	0.07	Wisconsin	0.43	0.04	(14)	4.80
Mississippi	0.41	0.05	(21)	0.06	Wyoming	-	-	(-)	-
Missouri	0.43	0.04	(15)	4.35					



^a US Mortality Files, National Center for Health Statistics, Centers for Disease Control and Prevention. Rates are per 100,000 and are age-adjusted to the 2000 US Std Population (19 age groups - Census P25-1130).

^b Difference between state rate and total U.S. rate is statistically significant ($p \leq .0002$).

^c Absolute percent difference between state rate and total U.S. rate is 15% or more.

SE Standard error of the rate.

PD Percent difference between state rate and total U.S. rate.

- Statistic not shown. Rate based on less than 16 cases for the time interval.

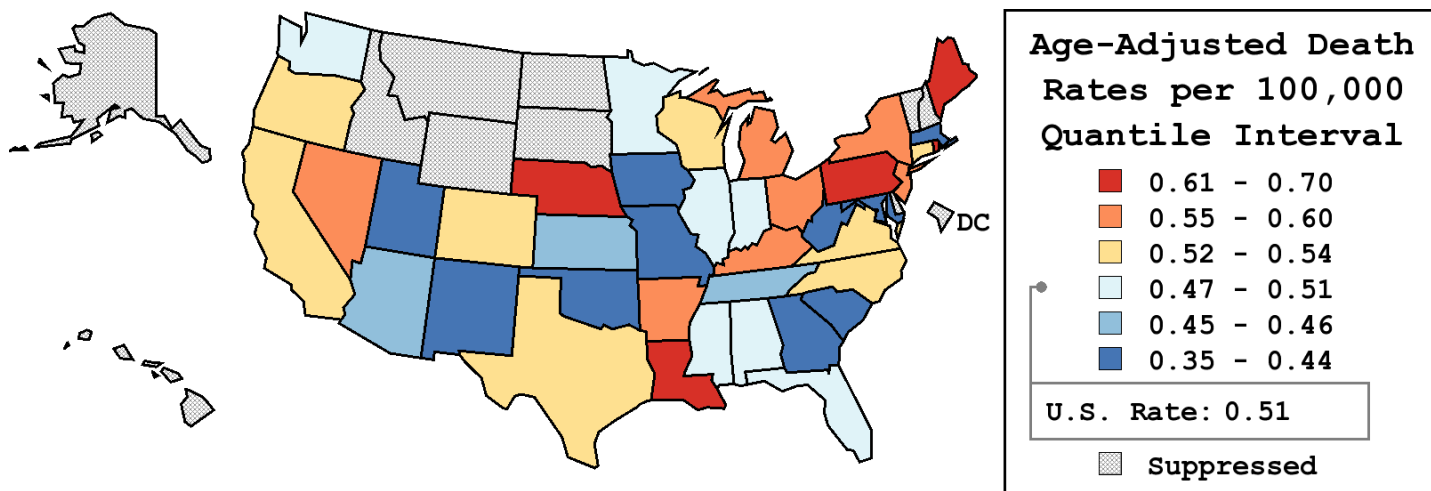
Table 9.19
Hodgkin Lymphoma

Age-Adjusted Cancer Death^a Rates By State, All Races, 2004-2008

Males

State	Rate	SE	Rank	PD
TOTAL U.S.	0.51	0.01		
High Five States				
Rhode Island	0.70	0.17	(01)	37.26 ^c
Nebraska	0.69	0.13	(02)	33.59 ^c
Louisiana	0.64	0.08	(03)	24.71 ^c
Pennsylvania	0.62	0.04	(04)	21.36 ^c
Maine	0.62	0.14	(05)	21.03 ^c
Low Five States				
West Virginia	0.43	0.10	(36)	-17.10 ^c
Oklahoma	0.42	0.07	(37)	-17.38 ^c
South Carolina	0.42	0.07	(38)	-18.06 ^c
Massachusetts	0.41	0.05	(39)	-20.41 ^c
Iowa	0.35	0.07	(40)	-32.11 ^c

State	Rate	SE	Rank	PD	State	Rate	SE	Rank	PD
Alabama	0.48	0.07	(27)	-7.13	Montana	-	-	(-)	-
Alaska	-	-	(-)	-	Nebraska	0.69	0.13	(02)	33.59 ^c
Arizona	0.45	0.06	(30)	-11.37	Nevada	0.56	0.10	(11)	9.00
Arkansas	0.59	0.09	(08)	14.20	New Hampshire	-	-	(-)	-
California	0.52	0.03	(18)	2.09	New Jersey	0.60	0.06	(07)	16.77 ^c
Colorado	0.52	0.07	(20)	0.66	New Mexico	0.44	0.10	(33)	-14.00
Connecticut	0.54	0.08	(14)	5.53	New York	0.55	0.04	(12)	7.22
Delaware	-	-	(-)	-	North Carolina	0.52	0.05	(19)	1.91
D.C.	-	-	(-)	-	North Dakota	-	-	(-)	-
Florida	0.51	0.03	(22)	-1.51	Ohio	0.60	0.05	(06)	17.64 ^c
Georgia	0.44	0.05	(35)	-15.03 ^c	Oklahoma	0.42	0.07	(37)	-17.38 ^c
Hawaii	-	-	(-)	-	Oregon	0.54	0.08	(15)	5.34
Idaho	-	-	(-)	-	Pennsylvania	0.62	0.04	(04)	21.36 ^c
Illinois	0.51	0.04	(21)	0.33	Rhode Island	0.70	0.17	(01)	37.26 ^c
Indiana	0.48	0.06	(26)	-6.85	South Carolina	0.42	0.07	(38)	-18.06 ^c
Iowa	0.35	0.07	(40)	-32.11 ^c	South Dakota	-	-	(-)	-
Kansas	0.46	0.09	(29)	-11.04	Tennessee	0.46	0.06	(28)	-10.34
Kentucky	0.59	0.08	(09)	13.97	Texas	0.53	0.03	(16)	2.92
Louisiana	0.64	0.08	(03)	24.71 ^c	Utah	0.44	0.10	(32)	-13.76
Maine	0.62	0.14	(05)	21.03 ^c	Vermont	-	-	(-)	-
Maryland	0.44	0.06	(31)	-13.32	Virginia	0.52	0.06	(17)	2.16
Massachusetts	0.41	0.05	(39)	-20.41 ^c	Washington	0.50	0.06	(23)	-3.12
Michigan	0.57	0.05	(10)	11.21	West Virginia	0.43	0.10	(36)	-17.10 ^c
Minnesota	0.50	0.07	(25)	-3.38	Wisconsin	0.54	0.07	(13)	5.92
Mississippi	0.50	0.09	(24)	-3.13	Wyoming	-	-	(-)	-
Missouri	0.44	0.06	(34)	-14.86					



^a US Mortality Files, National Center for Health Statistics, Centers for Disease Control and Prevention. Rates are per 100,000 and are age-adjusted to the 2000 US Std Population (19 age groups - Census P25-1130).
^b Difference between state rate and total U.S. rate is statistically significant (p<=.0002).
^c Absolute percent difference between state rate and total U.S. rate is 15% or more.
SE Standard error of the rate.
PD Percent difference between state rate and total U.S. rate.
- Statistic not shown. Rate based on less than 16 cases for the time interval.

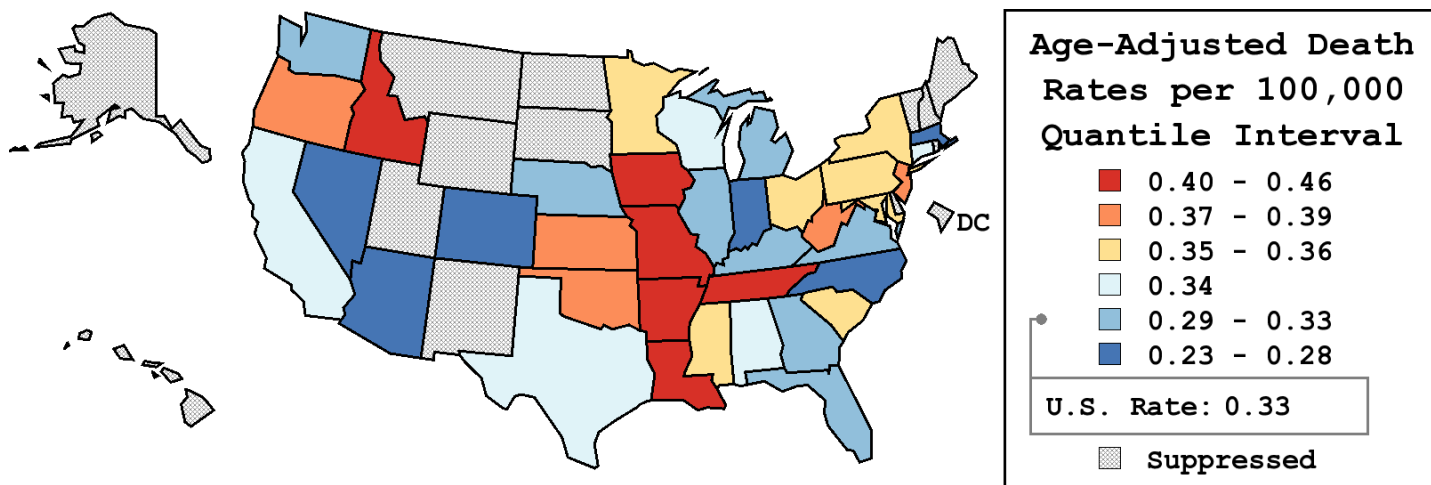
Table 9.20
Hodgkin Lymphoma

Age-Adjusted Cancer Death^a Rates By State, All Races, 2004-2008

Females

State	Rate	SE	Rank	PD
TOTAL U.S.	0.33	0.01		
High Five States				
Louisiana	0.46	0.06	(01)	37.89 ^c
Tennessee	0.45	0.05	(02)	35.97 ^c
Idaho	0.45	0.11	(03)	34.78 ^c
Iowa	0.42	0.07	(04)	27.08 ^c
Missouri	0.41	0.05	(05)	23.07 ^c
Low Five States				
North Carolina	0.28	0.03	(33)	-16.93 ^c
Nevada	0.28	0.07	(34)	-17.07 ^c
Indiana	0.25	0.04	(35)	-25.21 ^c
Arizona	0.23	0.04	(36)	-30.25 ^c
Colorado	0.23	0.05	(37)	-30.41 ^c

State	Rate	SE	Rank	PD	State	Rate	SE	Rank	PD
Alabama	0.34	0.05	(20)	2.61	Montana	-	-	(-)	-
Alaska	-	-	(-)	-	Nebraska	0.31	0.08	(28)	-7.22
Arizona	0.23	0.04	(36)	-30.25 ^c	Nevada	0.28	0.07	(34)	-17.07 ^c
Arkansas	0.40	0.07	(06)	19.75 ^c	New Hampshire	-	-	(-)	-
California	0.34	0.02	(19)	2.70	New Jersey	0.39	0.04	(08)	16.50 ^c
Colorado	0.23	0.05	(37)	-30.41 ^c	New Mexico	-	-	(-)	-
Connecticut	0.34	0.06	(21)	2.54	New York	0.35	0.03	(17)	5.74
Delaware	-	-	(-)	-	North Carolina	0.28	0.03	(33)	-16.93 ^c
D.C.	-	-	(-)	-	North Dakota	-	-	(-)	-
Florida	0.30	0.02	(29)	-8.90	Ohio	0.36	0.03	(13)	8.50
Georgia	0.30	0.04	(30)	-10.17	Oklahoma	0.38	0.06	(10)	12.41
Hawaii	-	-	(-)	-	Oregon	0.37	0.06	(11)	11.13
Idaho	0.45	0.11	(03)	34.78 ^c	Pennsylvania	0.35	0.03	(16)	5.93
Illinois	0.33	0.03	(25)	-0.51	Rhode Island	-	-	(-)	-
Indiana	0.25	0.04	(35)	-25.21 ^c	South Carolina	0.36	0.06	(12)	9.06
Iowa	0.42	0.07	(04)	27.08 ^c	South Dakota	-	-	(-)	-
Kansas	0.38	0.07	(09)	15.23 ^c	Tennessee	0.45	0.05	(02)	35.97 ^c
Kentucky	0.33	0.05	(24)	0.08	Texas	0.34	0.02	(23)	0.90
Louisiana	0.46	0.06	(01)	37.89 ^c	Utah	-	-	(-)	-
Maine	-	-	(-)	-	Vermont	-	-	(-)	-
Maryland	0.35	0.05	(18)	4.03	Virginia	0.32	0.04	(27)	-4.02
Massachusetts	0.28	0.04	(32)	-16.64 ^c	Washington	0.29	0.04	(31)	-13.02
Michigan	0.33	0.03	(26)	-1.39	West Virginia	0.39	0.08	(07)	16.75 ^c
Minnesota	0.36	0.05	(14)	6.59	Wisconsin	0.34	0.05	(22)	1.21
Mississippi	0.36	0.07	(15)	6.37	Wyoming	-	-	(-)	-
Missouri	0.41	0.05	(05)	23.07 ^c					



^a US Mortality Files, National Center for Health Statistics, Centers for Disease Control and Prevention. Rates are per 100,000 and are age-adjusted to the 2000 US Std Population (19 age groups - Census P25-1130).
^b Difference between state rate and total U.S. rate is statistically significant (p<=.0002).
^c Absolute percent difference between state rate and total U.S. rate is 15% or more.
SE Standard error of the rate.
PD Percent difference between state rate and total U.S. rate.
- Statistic not shown. Rate based on less than 16 cases for the time interval.

Table 9.21
Hodgkin LymphomaEstimated United States Cancer Prevalence Counts^a on January 1, 2008
By Race/Ethnicity, Sex and Years Since Diagnosis

Years Since Diagnosis		0 to <5	5 to <10	10 to <15	15 to <20	20 to <25	25 to <30	0 to <18 ^e	0 to <33 ^e	>=33 ^g	Complete ^h
<u>Race</u>	<u>Sex</u>										
All Races ^b	Both Sexes	35,728	29,609	25,629	22,995	17,817	12,409	106,629	152,859	13,917	166,776
	Males	18,621	15,264	13,210	11,656	9,396	6,452	55,639	79,172	7,046	86,218
	Females	17,107	14,345	12,419	11,339	8,421	5,957	50,990	73,687	6,871	80,558
White ^b	Both Sexes	30,306	25,807	22,847	21,234	16,492	11,715	92,811	136,078	15,515	151,593
	Males	15,902	13,273	11,844	10,858	8,542	6,006	48,651	70,429	8,060	78,489
	Females	14,404	12,534	11,003	10,376	7,950	5,709	44,160	65,649	7,455	73,104
Black ^b	Both Sexes	4,029	2,948	2,286	1,390	1,057	575	10,709	13,014	1,050	14,064
	Males	1,944	1,526	1,133	612	714	365	5,322	6,732	720	7,452
	Females	2,085	1,422	1,153	778	343	210	5,387	6,282	330	6,612
Asian/ Pacific Islander ^c	Both Sexes	847	558	290	+	+	+	1,847	+	+	+
	Males	454	297	131	+	+	+	956	+	+	+
	Females	393	261	159	+	+	+	891	+	+	+
Hispanic ^d	Both Sexes	3,542	2,620	1,775	+	+	+	8,899	+	+	+
	Males	1,971	1,505	942	+	+	+	4,958	+	+	+
	Females	1,571	1,115	833	+	+	+	3,941	+	+	+

Estimated prevalence percent^a on January 1, 2008, of the SEER 11 population diagnosed in the previous 18 years
By Age at Prevalence, Race/Ethnicity and Sex

Age at Prevalence		Age Specific (Crude)									Age-Adjusted ^f	
		All Ages	0-9	10-19	20-29	30-39	40-49	50-59	60-69	70-79	80+	All Ages
<u>Race</u>	<u>Sex</u>											
All Races ^c	Both Sexes	0.0285%	0.0007%	0.0098%	0.0372%	0.0520%	0.0437%	0.0303%	0.0265%	0.0250%	0.0185%	0.0284%
	Males	0.0303%	0.0009%	0.0115%	0.0344%	0.0505%	0.0480%	0.0361%	0.0325%	0.0289%	0.0234%	0.0302%
	Females	0.0268%	0.0004%	0.0081%	0.0402%	0.0537%	0.0395%	0.0248%	0.0211%	0.0219%	0.0158%	0.0268%
White ^c	Both Sexes	0.0319%	0.0007%	0.0109%	0.0415%	0.0597%	0.0489%	0.0335%	0.0291%	0.0281%	0.0204%	0.0319%
	Males	0.0337%	0.0009%	0.0125%	0.0377%	0.0579%	0.0529%	0.0396%	0.0352%	0.0320%	0.0252%	0.0335%
	Females	0.0301%	0.0005%	0.0092%	0.0457%	0.0615%	0.0448%	0.0274%	0.0235%	0.0248%	0.0177%	0.0305%
Black ^c	Both Sexes	0.0252%	-	0.0075%	0.0295%	0.0479%	0.0414%	0.0300%	0.0278%	0.0214%	0.0146%	0.0258%
	Males	0.0265%	-	0.0084%	0.0278%	0.0430%	0.0483%	0.0375%	0.0343%	0.0280%	0.0247%	0.0281%
	Females	0.0241%	-	0.0066%	0.0312%	0.0522%	0.0353%	0.0238%	0.0227%	0.0169%	0.0099%	0.0240%
Asian/ Pacific Islander ^c	Both Sexes	0.0113%	-	0.0053%	0.0201%	0.0178%	0.0142%	0.0103%	0.0079%	0.0085%	0.0067%	0.0108%
	Males	0.0121%	-	0.0078%	0.0210%	0.0164%	0.0153%	0.0103%	0.0121%	0.0094%	0.0119%	0.0119%
	Females	0.0105%	-	0.0027%	0.0192%	0.0190%	0.0132%	0.0104%	0.0042%	0.0078%	-	0.0099%
Hispanic ^d	Both Sexes	-	-	-	-	-	-	-	-	-	-	-
	Males	-	-	-	-	-	-	-	-	-	-	-
	Females	-	-	-	-	-	-	-	-	-	-	-

^a US 2008 cancer prevalence counts are based on 2008 cancer prevalence proportions from the SEER registries and 1/1/2008 US population estimates based on the average of 2007 and 2008 population estimates from the US Bureau of the Census. Prevalence was calculated using the First Malignant Primary Only for a person.

^{b c d} Statistics based on (b) SEER 9 Areas (c) SEER 11 Areas and Rural Georgia (d) NHIA for Hispanic for SEER 11 Areas and Rural Georgia.

^e Maximum limited-duration prevalence: 33 years for 1975-2008 SEER 9 data; 18 years for 1990-2008 SEER 11 data (used to calculate prevalence for Hispanics and Asian Pacific Islanders).

^f Percentages are age-adjusted to the 2000 US Standard Population (19 age groups - Census P25-1130) by 5-year age groups.

^{g h i} (g) Cases diagnosed more than 33 years ago were estimated using the completeness index method (Capocaccia et. al. 1997, Merrill et. al. 2000). (h) Complete prevalence is obtained by summing 0 to <33 and >=33. (i) Age-specific completeness index was approximated using empirical data from historical Connecticut tumor registry.

- Statistic not shown. Statistic based on fewer than 5 cases estimated alive in SEER for the time interval.

+ Not available.

Table 9.22
All Lymphoid Neoplasms With Detailed Hodgkin Lymphoma Subtypes^a

SEER^b Incidence Rates and Annual Percent Change by Age at Diagnosis

All Races, Both Sexes, 2001-2008

Site	All Ages			Ages 0-19			Ages 20-64			Ages 65+		
	Rate	Count	APC	Rate	Count	APC	Rate	Count	APC	Rate	Count	APC
Lymphoid Neoplasm	35.1	207,457	-0.3	5.8	10,101	0.8	23.6	88,493	-0.6*	155.2	108,863	-0.1
1 Hodgkin Lymphoma	2.8	17,052	0.6	1.2	2,077	1.8	3.3	12,013	0.0	4.2	2,962	2.0
1(a) Classical Hodgkin lymphoma	2.7	16,333	0.3	1.1	1,978	1.7	3.1	11,505	-0.3	4.1	2,850	1.5
1(a)1. Lymphocyte-rich/mixed cellularity/ lymphocyte-depleted	0.5	2,910	-1.6*	0.1	207	2.2	0.5	1,871	-2.2*	1.2	832	-1.3
1(a)1.1 Lymphocyte-rich	0.1	532	3.5	0.0	46	-	0.1	362	1.6	0.2	124	-
1(a)1.2 Mixed cellularity	0.4	2,155	-3.2*	0.1	153	-0.3	0.4	1,382	-3.2*	0.9	620	-4.2
1(a)1.3 Lymphocyte-depleted	0.0	223	3.0	-	-	-	0.0	127	-1.7	0.1	88	-
1(a)2. Nodular sclerosis	1.6	10,105	-1.2*	0.9	1,548	1.0	2.0	7,514	-1.7*	1.5	1,043	-0.9
1(a)3. Classical Hodgkin lymphoma, NOS ^c	0.6	3,318	6.4*	0.1	223	5.2	0.6	2,120	6.3*	1.4	975	6.8*
1(b) Nodular lymphocyte predominant Hodgkin Lymphoma	0.1	719	7.5*	0.1	99	-	0.1	508	6.9*	0.2	112	-
2 Non-Hodgkin lymphoma	31.2	183,589	-0.2	4.5	7,968	0.6	19.7	74,120	-0.5*	144.8	101,501	0.0
3 Composite Hodgkin lymphoma and Non-Hodgkin lymphoma	0.0	89	-	0.0	0	-	0.0	44	-	0.1	45	-
4 Lymphoid neoplasm, NOS ^c	1.1	6,727	-5.4*	0.0	56	-	0.6	2,316	-6.8*	6.1	4,355	-4.7*

^a The APC is the Annual Percent Change over the time interval.
Morton LM, Turner JJ, Cerhan JR, Linet MS, Treseler PA, Clarke CA, Jack A, Cozen W, Maynadié M, Spinelli JJ, Costantini AS, Rüdiger T, Scarpa A, Zheng T, Weisenburger DD. Proposed classification of lymphoid neoplasms for epidemiologic research from the Pathology Working Group of the International Lymphoma Epidemiology Consortium (InterLymph). *Blood*. 2007;110:695-708.

^b SEER 17 areas (San Francisco, Connecticut, Detroit, Hawaii, Iowa, New Mexico, Seattle, Utah, Atlanta, San Jose-Monterey, Los Angeles, Alaska Native Registry, Rural Georgia, California excluding SF/SJM/LA, Kentucky, Louisiana and New Jersey).

^c NOS = Not otherwise specified.

* The APC is significantly different from zero (p<.05).

- Statistic not shown. Rate based on less than 16 cases for the time interval.

Trend based on less than 10 cases for at least one year within the time interval.

Table 9.23

All Lymphoid Neoplasms With Detailed Hodgkin Lymphoma Subtypes^aSEER^b Incidence Rates and Annual Percent Change by Age at Diagnosis

All Races, Males, 2001-2008

Site	All Ages			Ages 0-19			Ages 20-64			Ages 65+		
	Rate	Count	APC	Rate	Count	APC	Rate	Count	APC	Rate	Count	APC
Lymphoid Neoplasm	43.4	114,352	-0.3	6.6	5,903	0.6	28.2	51,831	-0.8*	197.5	56,618	0.0
1 Hodgkin Lymphoma	3.1	9,294	0.4	1.3	1,125	1.7	3.6	6,643	-0.4	5.2	1,526	1.8
1(a) Classical Hodgkin lymphoma	3.0	8,800	0.0	1.2	1,046	1.7	3.4	6,298	-0.7	5.0	1,456	1.2
1(a)1. Lymphocyte-rich/mixed cellularity/ lymphocyte-depleted	0.6	1,832	-2.7*	0.2	149	2.1	0.7	1,264	-3.1*	1.4	419	-3.5
1(a)1.1 Lymphocyte-rich	0.1	337	1.4	0.0	40	-	0.1	238	-0.3	0.2	59	-
1(a)1.2 Mixed cellularity	0.5	1,354	-4.2*	0.1	103	-1.6	0.5	937	-3.7*	1.1	314	-6.2
1(a)1.3 Lymphocyte-depleted	0.1	141	1.0	-	-	-	0.0	89	-	0.2	46	-
1(a)2. Nodular sclerosis	1.7	5,043	-1.3	0.9	766	1.3	2.0	3,749	-1.9*	1.8	528	-0.9
1(a)3. Classical Hodgkin lymphoma, NOS ^c	0.7	1,925	6.0*	0.1	131	3.0	0.7	1,285	5.5*	1.8	509	7.6
1(b) Nodular lymphocyte predominant Hodgkin Lymphoma	0.2	494	6.7*	0.1	79	-	0.2	345	5.4	0.2	70	-
2 Non-Hodgkin lymphoma	38.8	101,481	-0.2	5.3	4,743	0.4	23.8	43,749	-0.7*	184.7	52,989	0.1
3 Composite Hodgkin lymphoma and Non-Hodgkin lymphoma	0.0	44	-	0.0	0	-	0.0	26	-	0.1	18	-
4 Lymphoid neoplasm, NOS ^c	1.4	3,533	-5.1*	0.0	35	-	0.8	1,413	-6.5*	7.5	2,085	-4.3*

^a The APC is the Annual Percent Change over the time interval.
Morton LM, Turner JJ, Cerhan JR, Linet MS, Treseler PA, Clarke CA, Jack A, Cozen W, Maynadié M, Spinelli JJ, Costantini AS, Rüdiger T, Scarpa A, Zheng T, Weisenburger DD. Proposed classification of lymphoid neoplasms for epidemiologic research from the Pathology Working Group of the International Lymphoma Epidemiology Consortium (InterLymph). *Blood*. 2007;110:695-708.

^b SEER 17 areas (San Francisco, Connecticut, Detroit, Hawaii, Iowa, New Mexico, Seattle, Utah, Atlanta, San Jose-Monterey, Los Angeles, Alaska Native Registry, Rural Georgia, California excluding SF/SJM/LA, Kentucky, Louisiana and New Jersey).

^c NOS = Not otherwise specified.

* The APC is significantly different from zero (p<.05).

- Statistic not shown. Rate based on less than 16 cases for the time interval.

Trend based on less than 10 cases for at least one year within the time interval.

Table 9.24
 All Lymphoid Neoplasms With Detailed Hodgkin Lymphoma Subtypes^a
 SEER^b Incidence Rates and Annual Percent Change by Age at Diagnosis

All Races, Females, 2001-2008

Site	All Ages			Ages 0-19			Ages 20-64			Ages 65+		
	Rate	Count	APC	Rate	Count	APC	Rate	Count	APC	Rate	Count	APC
Lymphoid Neoplasm	28.7	93,105	-0.3	4.9	4,198	1.1	19.3	36,662	-0.4	126.4	52,245	-0.4
1 Hodgkin Lymphoma	2.5	7,758	0.8	1.1	952	1.7	2.9	5,370	0.3	3.5	1,436	2.0
1(a) Classical Hodgkin lymphoma	2.4	7,533	0.6	1.1	932	1.5	2.9	5,207	0.0	3.4	1,394	1.8
1(a)1. Lymphocyte-rich/mixed cellularity/ lymphocyte-depleted	0.3	1,078	0.3	0.1	58	-	0.3	607	-0.4	1.0	413	0.9
1(a)1.1 Lymphocyte-rich	0.1	195	7.5	-	-	-	0.1	124	6.3	0.2	65	-
1(a)1.2 Mixed cellularity	0.3	801	-1.9	0.1	50	-	0.2	445	-2.3	0.8	306	-2.2
1(a)1.3 Lymphocyte-depleted	0.0	82	-	-	-	-	0.0	38	-	0.1	42	-
1(a)2. Nodular sclerosis	1.6	5,062	-1.0	0.9	782	0.6	2.1	3,765	-1.5	1.3	515	-0.9
1(a)3. Classical Hodgkin lymphoma, NOS ^c	0.4	1,393	7.0*	0.1	92	-	0.5	835	7.6*	1.1	466	5.5
1(b) Nodular lymphocyte predominant Hodgkin Lymphoma	0.1	225	9.7*	0.0	20	-	0.1	163	10.1*	0.1	42	-
2 Non-Hodgkin lymphoma	25.2	82,108	-0.2	3.8	3,225	0.8	15.8	30,371	-0.3	117.5	48,512	-0.2
3 Composite Hodgkin lymphoma and Non-Hodgkin lymphoma	0.0	45	-	0.0	0	-	0.0	18	-	0.1	27	-
4 Lymphoid neoplasm, NOS ^c	0.9	3,194	-5.7*	0.0	21	-	0.5	903	-7.4*	5.2	2,270	-5.1*

^a The APC is the Annual Percent Change over the time interval.
 Morton LM, Turner JJ, Cerhan JR, Linet MS, Treseler PA, Clarke CA, Jack A, Cozen W, Maynadié M, Spinelli JJ, Costantini AS, Rüdiger T, Scarpa A, Zheng T, Weisenburger DD. Proposed classification of lymphoid neoplasms for epidemiologic research from the Pathology Working Group of the International Lymphoma Epidemiology Consortium (InterLymph). *Blood*. 2007;110:695-708.

^b SEER 17 areas (San Francisco, Connecticut, Detroit, Hawaii, Iowa, New Mexico, Seattle, Utah, Atlanta, San Jose-Monterey, Los Angeles, Alaska Native Registry, Rural Georgia, California excluding SF/SJM/LA, Kentucky, Louisiana and New Jersey).

^c NOS = Not otherwise specified.

* The APC is significantly different from zero (p<.05).

- Statistic not shown. Rate based on less than 16 cases for the time interval.
 Trend based on less than 10 cases for at least one year within the time interval.

Table 9.25
All Lymphoid Neoplasms With Detailed Hodgkin Lymphoma Subtypes^a

SEER^b 5-Year Relative Survival (Percent) by Age at Diagnosis

All Races, Both Sexes, 2001-2007

Site	All Ages		Ages 0-19		Ages 20-64		Ages 65+	
	Count	Percent (95% C.I.)	Percent (95% C.I.)	Percent (95% C.I.)	Percent (95% C.I.)	Percent (95% C.I.)	Percent (95% C.I.)	
Lymphoid Neoplasm	150,258	65.7 (65.4 , 66.0)	86.7 (85.9 , 87.5)	73.9 (73.5 , 74.3)	54.4 (53.8 , 55.0)			
1 Hodgkin Lymphoma	13,651	83.9 (83.1 , 84.7)	95.5 (94.2 , 96.5)	88.4 (87.6 , 89.2)	48.2 (45.0 , 51.4)			
1(a) Classical Hodgkin lymphoma	13,101	83.4 (82.6 , 84.2)	95.3 (93.9 , 96.4)	88.1 (87.3 , 88.9)	47.0 (43.7 , 50.2)			
1(a)1. Lymphocyte-rich/mixed cellularity/ lymphocyte-depleted	2,291	77.3 (75.0 , 79.4)	95.7 (90.9 , 98.0)	84.9 (82.5 , 86.9)	50.4 (44.4 , 56.2)			
1(a)1.1 Lymphocyte-rich	413	86.4 (80.9 , 90.4)	100.0 (- , -)	90.0 (84.1 , 93.8)	64.2 (46.6 , 77.3)			
1(a)1.2 Mixed cellularity	1,705	77.3 (74.6 , 79.7)	94.1 (87.8 , 97.2)	84.7 (82.0 , 87.1)	51.1 (44.1 , 57.6)			
1(a)1.3 Lymphocyte-depleted	173	56.0 (47.0 , 64.1)	- (- , -)	71.7 (60.7 , 80.2)	22.3 (10.0 , 37.5)			
1(a)2. Nodular sclerosis	8,436	87.9 (87.0 , 88.7)	95.1 (93.5 , 96.4)	90.4 (89.4 , 91.2)	49.6 (44.2 , 54.7)			
1(a)3. Classical Hodgkin lymphoma, NOS ^c	2,374	73.1 (70.8 , 75.2)	95.8 (91.2 , 98.0)	82.0 (79.6 , 84.2)	40.1 (34.5 , 45.6)			
1(b) Nodular lymphocyte predominant Hodgkin Lymphoma	550	96.1 (93.0 , 97.9)	100.0 (- , -)	96.6 (92.4 , 98.5)	83.3 (62.8 , 93.1)			
2 Non-Hodgkin lymphoma	131,973	64.4 (64.0 , 64.7)	84.5 (83.5 , 85.4)	71.9 (71.4 , 72.3)	55.2 (54.7 , 55.8)			
3 Composite Hodgkin lymphoma and Non-Hodgkin lymphoma	59	66.3 (49.3 , 78.8)	- (- , -)	67.7 (44.9 , 82.7)	63.2 (36.0 , 81.4)			
4 Lymphoid neoplasm, NOS ^c	4,575	47.0 (45.2 , 48.9)	82.1 (67.2 , 90.6)	58.9 (56.3 , 61.5)	38.1 (35.5 , 40.7)			

^a Morton LM, Turner JJ, Cerhan JR, Linet MS, Treseler PA, Clarke CA, Jack A, Cozen W, Maynadié M, Spinelli JJ, Costantini AS, Rüdiger T, Scarpa A, Zheng T, Weisenburger DD. Proposed classification of lymphoid neoplasms for epidemiologic research from the Pathology Working Group of the International Lymphoma Epidemiology Consortium (InterLymph). *Blood*. 2007;110:695-708.

^b SEER 17 areas (San Francisco, Connecticut, Detroit, Hawaii, Iowa, New Mexico, Seattle, Utah, Atlanta, San Jose-Monterey, Los Angeles, Alaska Native Registry, Rural Georgia, California excluding SF/SJM/LA, Kentucky, Louisiana and New Jersey).

^c NOS = Not otherwise specified.

- Statistic not displayed due to less than 25 cases.

Table 9.26
All Lymphoid Neoplasms With Detailed Hodgkin Lymphoma Subtypes^a

SEER^b 5-Year Relative Survival (Percent) by Age at Diagnosis

All Races, Males, 2001-2007

Site	All Ages		Ages 0-19	Ages 20-64	Ages 65+
	Count	Percent (95% C.I.)	Percent (95% C.I.)	Percent (95% C.I.)	Percent (95% C.I.)
Lymphoid Neoplasm	82,408	65.0 (64.6 , 65.5)	85.6 (84.5 , 86.7)	71.5 (71.0 , 72.0)	53.7 (52.9 , 54.6)
1 Hodgkin Lymphoma	7,444	82.8 (81.7 , 83.9)	96.2 (94.5 , 97.4)	86.2 (85.0 , 87.3)	48.6 (43.9 , 53.2)
1(a) Classical Hodgkin lymphoma	7,055	82.1 (81.0 , 83.2)	95.9 (94.1 , 97.2)	85.6 (84.4 , 86.8)	47.2 (42.5 , 51.8)
1(a)1. Lymphocyte-rich/mixed cellularity/ lymphocyte-depleted	1,455	79.0 (76.2 , 81.5)	96.6 (90.7 , 98.8)	84.8 (81.9 , 87.3)	48.6 (40.0 , 56.7)
1(a)1.1 Lymphocyte-rich	271	89.1 (82.9 , 93.2)	100.0 (- , -)	91.7 (85.0 , 95.5)	64.1 (37.9 , 81.6)
1(a)1.2 Mixed cellularity	1,078	78.8 (75.5 , 81.7)	95.1 (87.1 , 98.2)	84.5 (81.1 , 87.4)	49.0 (39.1 , 58.3)
1(a)1.3 Lymphocyte-depleted	106	56.7 (45.3 , 66.7)	- (- , -)	68.3 (54.2 , 78.8)	23.1 (8.8 , 41.3)
1(a)2. Nodular sclerosis	4,218	86.3 (84.9 , 87.5)	95.9 (93.6 , 97.3)	88.0 (86.5 , 89.3)	49.6 (41.7 , 57.0)
1(a)3. Classical Hodgkin lymphoma, NOS ^c	1,382	72.4 (69.3 , 75.2)	95.0 (88.1 , 98.0)	78.5 (75.1 , 81.4)	42.5 (34.4 , 50.4)
1(b) Nodular lymphocyte predominant Hodgkin Lymphoma	389	96.0 (91.4 , 98.2)	100.0 (- , -)	96.4 (90.7 , 98.6)	80.4 (50.4 , 93.3)
2 Non-Hodgkin lymphoma	72,569	63.7 (63.2 , 64.2)	83.2 (81.8 , 84.4)	69.7 (69.1 , 70.3)	54.4 (53.6 , 55.3)
3 Composite Hodgkin lymphoma and Non-Hodgkin lymphoma	30	64.2 (38.7 , 81.3)	- (- , -)	- (- , -)	- (- , -)
4 Lymphoid neoplasm, NOS ^c	2,365	47.3 (44.6 , 49.9)	77.7 (56.9 , 89.3)	54.9 (51.5 , 58.2)	39.1 (35.1 , 43.1)

^a Morton LM, Turner JJ, Cerhan JR, Linet MS, Treseler PA, Clarke CA, Jack A, Cozen W, Maynadié M, Spinelli JJ, Costantini AS, Rüdiger T, Scarpa A, Zheng T, Weisenburger DD. Proposed classification of lymphoid neoplasms for epidemiologic research from the Pathology Working Group of the International Lymphoma Epidemiology Consortium (InterLymph). *Blood*. 2007;110:695-708.

^b SEER 17 areas (San Francisco, Connecticut, Detroit, Hawaii, Iowa, New Mexico, Seattle, Utah, Atlanta, San Jose-Monterey, Los Angeles, Alaska Native Registry, Rural Georgia, California excluding SF/SJM/LA, Kentucky, Louisiana and New Jersey).

^c NOS = Not otherwise specified.

- Statistic not displayed due to less than 25 cases.

Table 9.27
All Lymphoid Neoplasms With Detailed Hodgkin Lymphoma Subtypes^a

SEER^b 5-Year Relative Survival (Percent) by Age at Diagnosis

All Races, Females, 2001-2007

Site	All Ages		Ages 0-19		Ages 20-64		Ages 65+	
	Count	Percent (95% C.I.)	Percent (95% C.I.)	Percent (95% C.I.)	Percent (95% C.I.)	Percent (95% C.I.)	Percent (95% C.I.)	
Lymphoid Neoplasm	67,850	66.5 (66.0 , 67.0)	88.3 (87.0 , 89.5)	77.4 (76.8 , 78.0)	55.0 (54.2 , 55.8)			
1 Hodgkin Lymphoma	6,207	85.2 (84.1 , 86.3)	94.7 (92.5 , 96.2)	91.2 (90.2 , 92.2)	47.9 (43.4 , 52.2)			
1(a) Classical Hodgkin lymphoma	6,046	84.9 (83.8 , 86.0)	94.6 (92.3 , 96.2)	91.1 (90.0 , 92.0)	46.8 (42.3 , 51.2)			
1(a)1. Lymphocyte-rich/mixed cellularity/ lymphocyte-depleted	836	74.4 (70.3 , 78.0)	93.4 (80.7 , 97.9)	85.0 (80.7 , 88.4)	52.3 (43.7 , 60.1)			
1(a)1.1 Lymphocyte-rich	142	81.0 (69.3 , 88.6)	- (- , -)	86.2 (72.3 , 93.4)	63.4 (38.6 , 80.4)			
1(a)1.2 Mixed cellularity	627	74.8 (70.1 , 78.8)	92.0 (76.8 , 97.4)	85.1 (80.3 , 88.9)	53.2 (43.4 , 62.1)			
1(a)1.3 Lymphocyte-depleted	67	54.6 (39.6 , 67.3)	- (- , -)	78.9 (59.8 , 89.6)	15.4 (1.5 , 43.7)			
1(a)2. Nodular sclerosis	4,218	89.5 (88.3 , 90.5)	94.4 (91.9 , 96.2)	92.7 (91.5 , 93.7)	49.4 (42.0 , 56.4)			
1(a)3. Classical Hodgkin lymphoma, NOS ^c	992	74.0 (70.5 , 77.2)	97.0 (88.1 , 99.3)	87.3 (83.7 , 90.1)	37.5 (30.1 , 44.9)			
1(b) Nodular lymphocyte predominant Hodgkin Lymphoma	161	95.6 (88.7 , 98.3)	- (- , -)	96.8 (88.3 , 99.1)	- (- , -)			
2 Non-Hodgkin lymphoma	59,404	65.2 (64.7 , 65.7)	86.4 (84.9 , 87.8)	75.1 (74.4 , 75.8)	56.0 (55.2 , 56.8)			
3 Composite Hodgkin lymphoma and Non-Hodgkin lymphoma	29	67.1 (43.7 , 82.6)	- (- , -)	- (- , -)	- (- , -)			
4 Lymphoid neoplasm, NOS ^c	2,210	46.8 (44.1 , 49.5)	- (- , -)	65.2 (61.0 , 69.1)	37.4 (34.0 , 40.7)			

^a Morton LM, Turner JJ, Cerhan JR, Linet MS, Treseler PA, Clarke CA, Jack A, Cozen W, Maynadié M, Spinelli JJ, Costantini AS, Rüdiger T, Scarpa A, Zheng T, Weisenburger DD. Proposed classification of lymphoid neoplasms for epidemiologic research from the Pathology Working Group of the International Lymphoma Epidemiology Consortium (InterLymph). *Blood*. 2007;110:695-708.

^b SEER 17 areas (San Francisco, Connecticut, Detroit, Hawaii, Iowa, New Mexico, Seattle, Utah, Atlanta, San Jose-Monterey, Los Angeles, Alaska Native Registry, Rural Georgia, California excluding SF/SJM/LA, Kentucky, Louisiana and New Jersey).

^c NOS = Not otherwise specified.

- Statistic not displayed due to less than 25 cases.

SEER Observed Incidence, SEER Delay Adjusted Incidence and US Death Rates^a Hodgkin Lymphoma, by Race and Sex

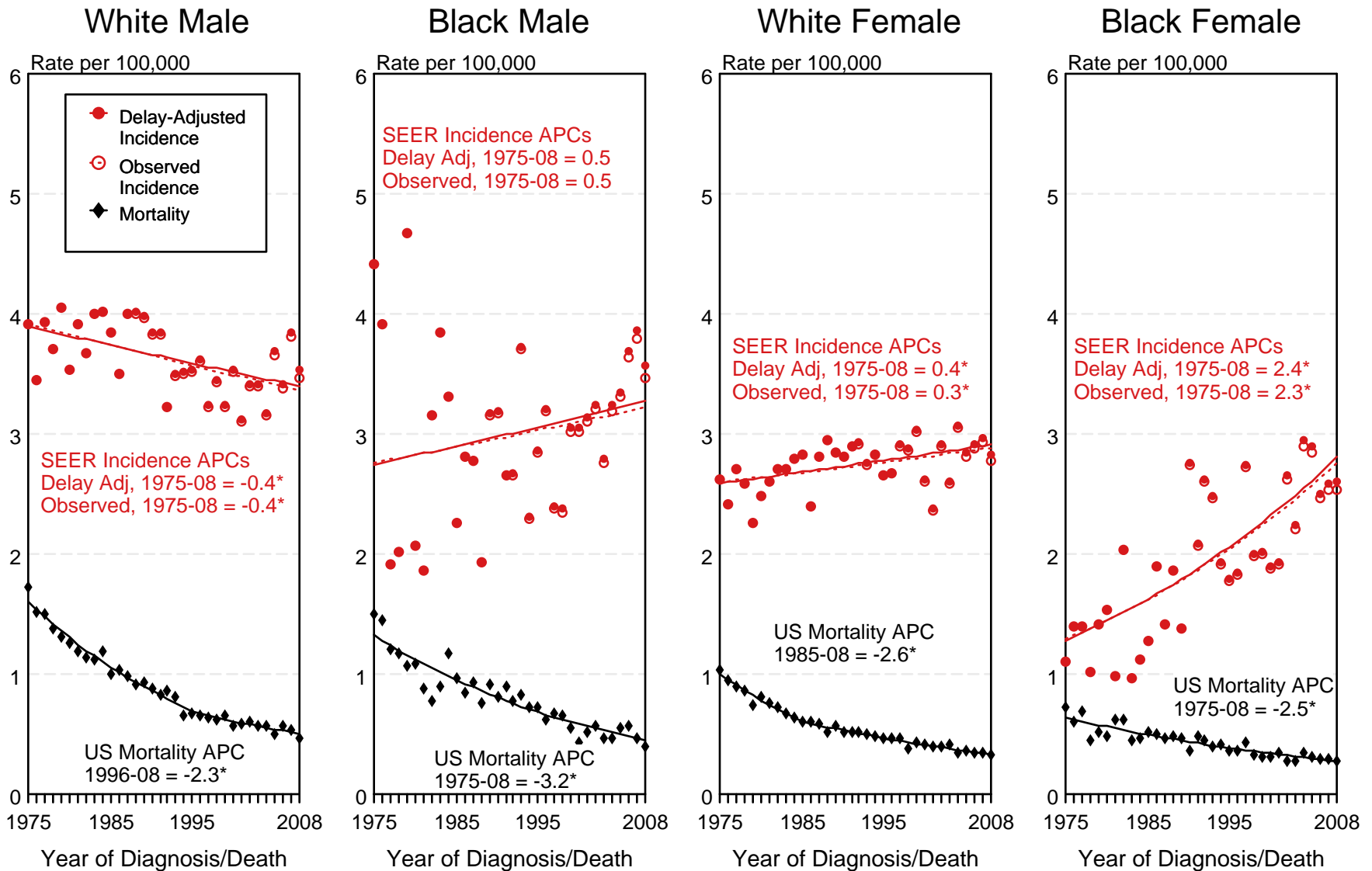


Figure 9.1

^a Source: SEER 9 areas and US Mortality Files (National Center for Health Statistics, CDC). Rates are age-adjusted to the 2000 US Std Population (19 age groups - Census P25-1103). Regression lines and APCs are calculated using the Joinpoint Regression Program Version 3.5, April 2011, National Cancer Institute. The APC is the Annual Percent Change for the regression line segments. The APC shown on the graph is for the most recent trend.
* The APC is significantly different from zero ($p < 0.05$).

SEER Incidence and US Death Rates^a Hodgkin Lymphoma, Both Sexes

Joinpoint Analyses for Whites and Blacks from 1975-2008

and for Asian/Pacific Islanders, American Indians/Alaska Natives and Hispanics from 1992-2008

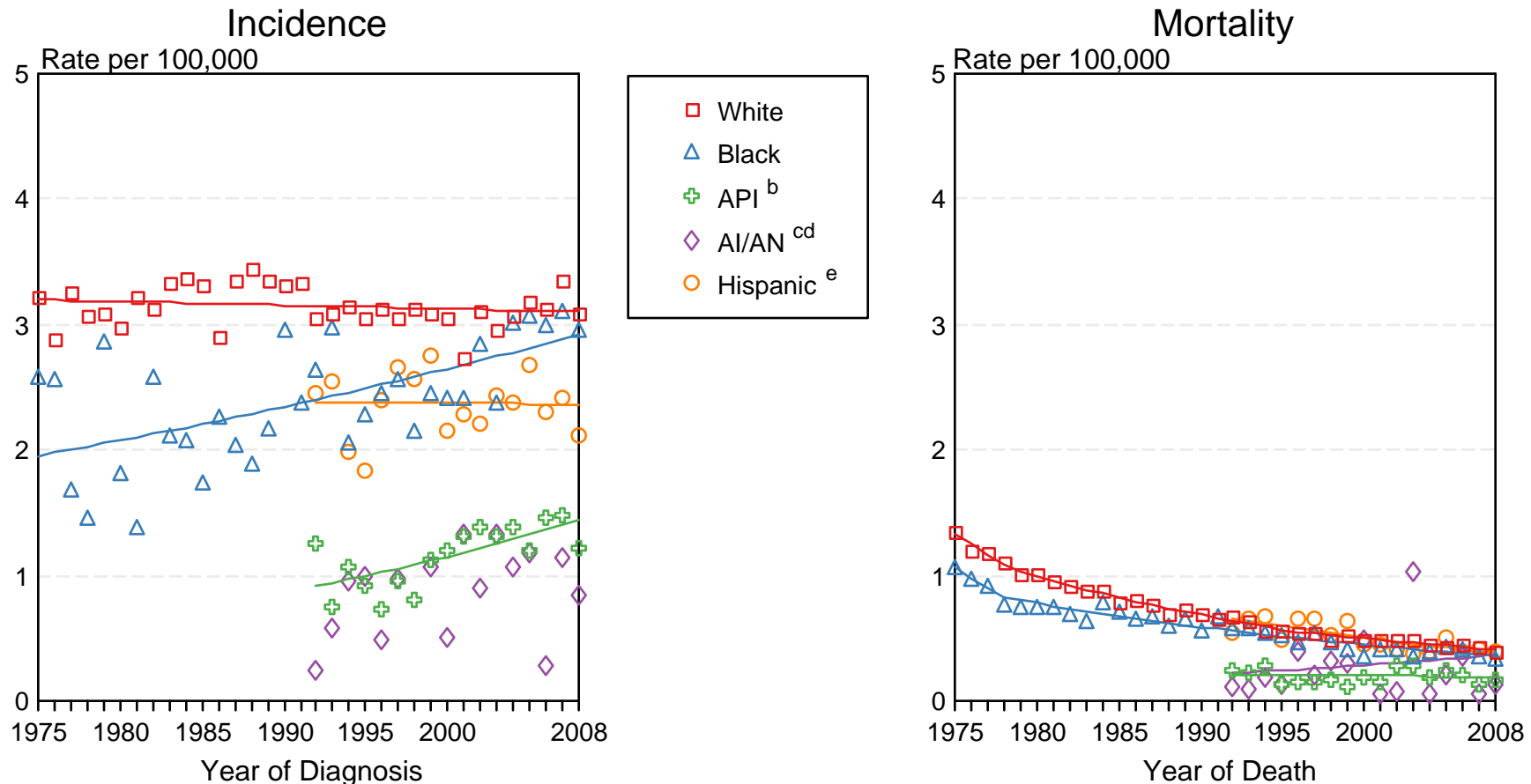


Figure 9.2

Source: Incidence data for whites and blacks are from the SEER 9 areas (San Francisco, Connecticut, Detroit, Hawaii, Iowa, New Mexico, Seattle, Utah, Atlanta). Incidence data for Asian/Pacific Islanders, American Indians/Alaska Natives and Hispanics are from the SEER 13 Areas (SEER 9 Areas, San Jose-Monterey, Los Angeles, Alaska Native Registry and Rural Georgia). Mortality data are from US Mortality Files, National Center for Health Statistics, CDC. Rates are age-adjusted to the 2000 US Std Population (19 age groups - Census P25-1103).

^a Regression lines are calculated using the Joinpoint Regression Program Version 3.5, April 2011, National Cancer Institute. Joinpoint analyses for Whites and Blacks during the 1975-2008 period allow a maximum of 5 joinpoints. Analyses for other ethnic groups during the period 1992-2008 allow a maximum of 3 joinpoints.

^b API = Asian/Pacific Islander.

^c AI/AN = American Indian/Alaska Native. Rates for American Indian/Alaska Native are based on the CHSDA (Contract Health Service Delivery Area) counties.

^d Joinpoint could not fit a regression line for American Indian/Alaska Native Incidence due to insufficient data.

^e Hispanic is not mutually exclusive from whites, blacks, Asian/Pacific Islanders, and American Indians/Alaska Natives. Incidence data for Hispanics are based on NHIA and exclude cases from the Alaska Native Registry. Mortality data for Hispanics exclude cases from Connecticut, the District of Columbia, Maine, Maryland, Minnesota, New Hampshire, New York, North Dakota, Oklahoma, and Vermont.

SEER Observed Incidence and SEER Delay Adjusted Incidence Rates^a SEER 9 Areas Compared to SEER 13 Areas Hodgkin Lymphoma, Male, by Race

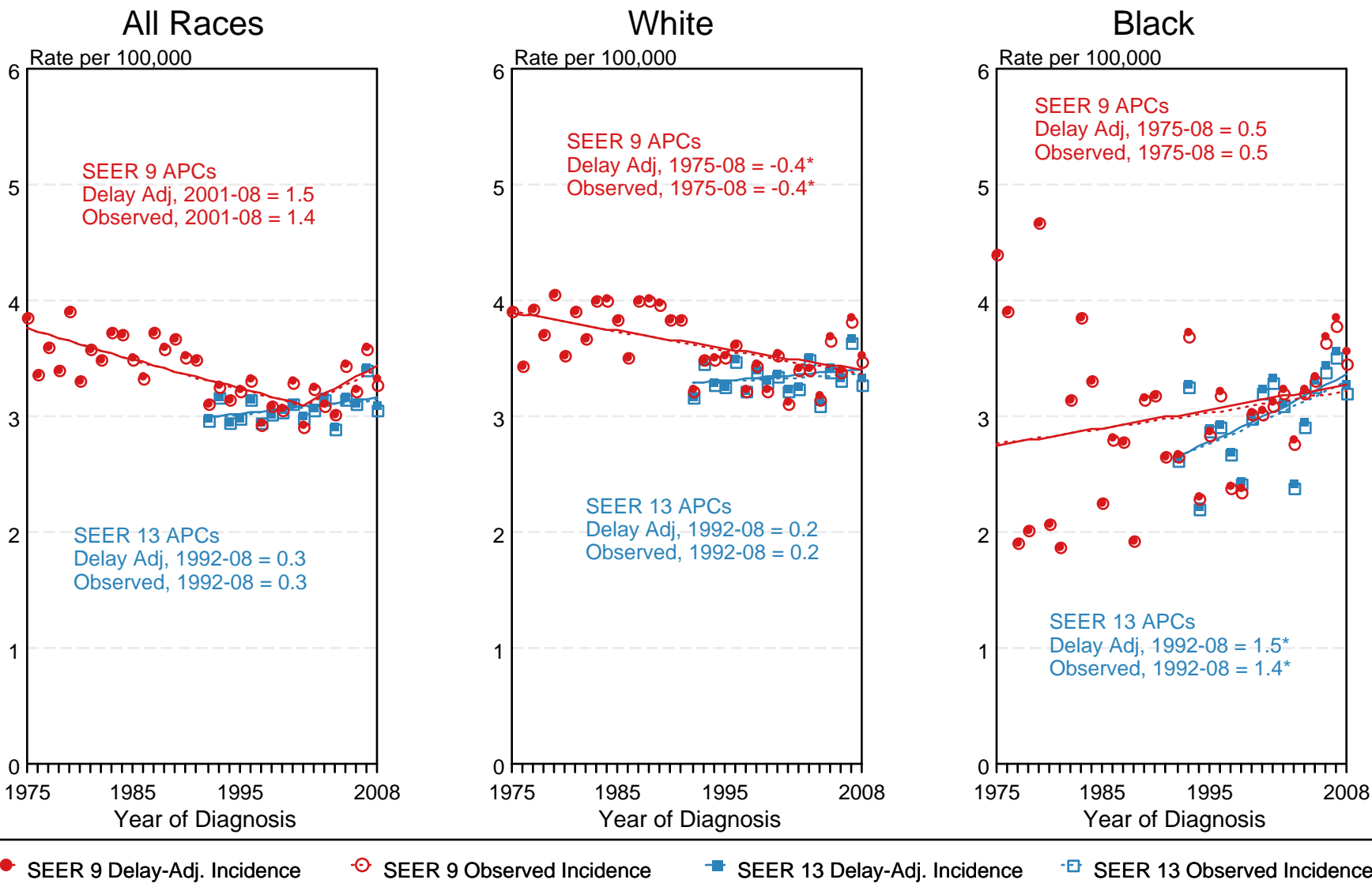


Figure 9.3

^a Source: SEER 9 areas and SEER 13 areas.
Rates are age-adjusted to the 2000 US Std Population (19 age groups - Census P25-1103).
Regression lines and APCs are calculated using the Joinpoint Regression Program Version 3.5, April 2011, National Cancer Institute.
The APC is the Annual Percent Change for the regression line segments. The APC shown on the graph is for the most recent trend.
* The APC is significantly different from zero ($p < 0.05$).

SEER Observed Incidence and SEER Delay Adjusted Incidence Rates^a SEER 9 Areas Compared to SEER 13 Areas Hodgkin Lymphoma, Female, by Race

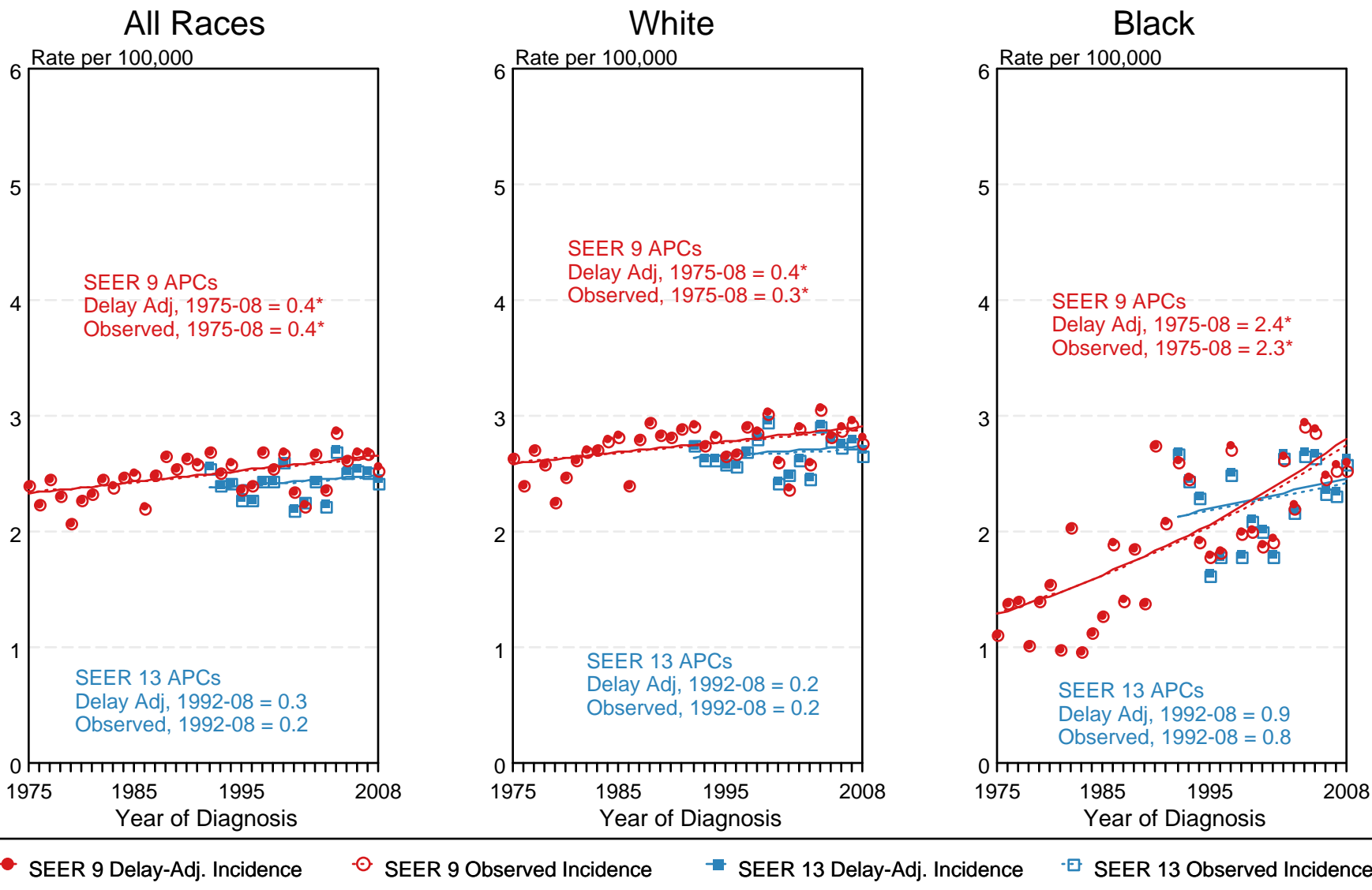


Figure 9.4

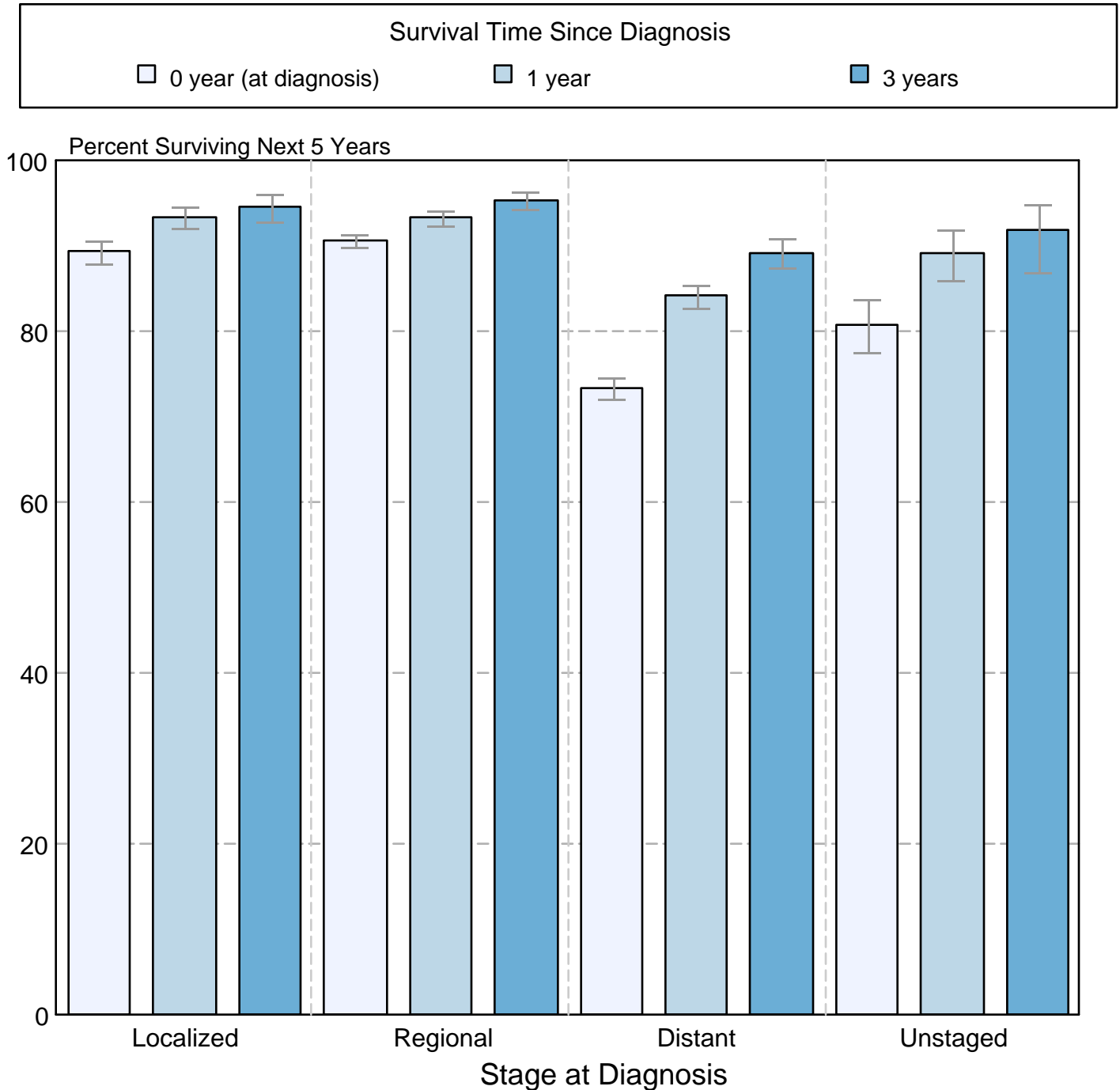
^a Source: SEER 9 areas and SEER 13 areas.
Rates are age-adjusted to the 2000 US Std Population (19 age groups - Census P25-1103).
Regression lines and APCs are calculated using the Joinpoint Regression Program Version 3.5, April 2011, National Cancer Institute.
The APC is the Annual Percent Change for the regression line segments. The APC shown on the graph is for the most recent trend.
* The APC is significantly different from zero ($p < 0.05$).

Figure 9.5

Hodgkin Lymphoma

5-Year SEER Conditional Relative Survival and 95% Confidence Intervals

Probability of surviving the next 5 years given the cohort
has already survived 0, 1, or 3 years
1998-2007 by stage at diagnosis



Source: SEER 17 areas (San Francisco, Connecticut, Detroit, Hawaii, Iowa, New Mexico, Seattle, Utah, Atlanta, San Jose-Monterey, Los Angeles, Alaska Native Registry, Rural Georgia, California excluding SF/SJM/LA, Kentucky, Louisiana, and New Jersey). California excluding SF/SJM/LA, Kentucky, Louisiana, and New Jersey contribute cases for diagnosis years 2000-2007. The remaining 13 SEER Areas contribute cases for the entire period 1998-2007.

Percent surviving is not shown if based on less than 25 cases.

Confidence intervals are not shown if length of the confidence interval is greater than 5 times the standard error.