

Table 9.1  
Hodgkin Lymphoma

Trends in SEER Incidence<sup>ab</sup> and U.S. Mortality<sup>c</sup> Using the Joinpoint Regression Program,  
1975-2012 With up to Five Joinpoints, 1992-2012 With up to Three Joinpoints,  
Both Sexes by Race/Ethnicity

	JP Trend 1		JP Trend 2		JP Trend 3		JP Trend 4		JP Trend 5		JP Trend 6		AAPC <sup>d</sup>	
	Years	APC	Years	APC	Years	APC	Years	APC	Years	APC	Years	APC	2003-12	2008-12
<u>SEER 9 Delay-Adjusted Incidence<sup>a</sup>, 1975-2012</u>														
All Races	1975-89	0.3	1989-01	-0.8*	2001-07	2.3*	2007-12	-2.8*					-0.5	-2.8*
White	1975-88	0.6*	1988-01	-0.9*	2001-07	2.3	2007-12	-2.8*					-0.6	-2.8*
Black	1975-12	1.2*											1.2*	1.2*
<u>SEER 13 Delay-Adjusted Incidence<sup>b</sup>, 1992-2012</u>														
All Races	1992-01	-0.2	2001-07	1.6*	2007-12	-2.4*							-0.7	-2.4*
White	1992-02	-0.2	2002-07	1.9	2007-12	-2.7*							-0.7	-2.7*
Black	1992-12	1.0*											1.0*	1.0*
<u>SEER 9 Observed Incidence<sup>a</sup>, 1975-2012</u>														
All Races	1975-89	0.3	1989-01	-0.9*	2001-07	2.3*	2007-12	-3.1*					-0.7	-3.1*
White	1975-88	0.6*	1988-01	-0.9*	2001-07	2.2	2007-12	-3.2*					-0.8	-3.2*
Black	1975-12	1.1*											1.1*	1.1*
<u>SEER 13 Observed Incidence<sup>b</sup>, 1992-2012</u>														
All Races	1992-03	0.0	2003-07	2.2	2007-12	-2.9*							-0.6	-2.9*
White	1992-02	-0.2	2002-07	1.8	2007-12	-3.0*							-0.9	-3.0*
White NH <sup>ef</sup>	1992-04	0.2	2004-07	2.9	2007-12	-3.5*							-1.0	-3.5*
Black	1992-12	0.9*											0.9*	0.9*
Black NH <sup>ef</sup>	1992-12	1.0*											1.0*	1.0*
API <sup>e</sup>	1992-96	-9.4	1996-01	11.7	2001-12	-0.1							-0.1	-0.1
AI/AN <sup>eg</sup>	-	-											-	-
Hispanic <sup>f</sup>	1992-12	0.0											0.0	0.0
<u>U.S. Cancer Mortality<sup>c</sup>, 1975-2012</u>														
All Races	1975-79	-6.4*	1979-96	-3.5*	1996-12	-2.5*							-2.5*	-2.5*
White	1975-79	-6.3*	1979-96	-3.6*	1996-12	-2.4*							-2.4*	-2.4*
Black	1975-12	-2.9*											-2.9*	-2.9*
<u>U.S. Cancer Mortality<sup>c</sup>, 1992-2012</u>														
All Races	1992-12	-2.7*											-2.7*	-2.7*
White	1992-12	-2.6*											-2.6*	-2.6*
White NH <sup>ef</sup>	1992-12	-2.6*											-2.6*	-2.6*
Black	1992-12	-2.8*											-2.8*	-2.8*
Black NH <sup>ef</sup>	1992-12	-2.7*											-2.7*	-2.7*
API <sup>e</sup>	1992-12	-1.9											-1.9	-1.9
AI/AN <sup>eg</sup>	1992-12	-1.1											-1.1	-1.1
Hispanic <sup>f</sup>	1992-12	-2.5*											-2.5*	-2.5*

Joinpoint Regression Program Version 4.2.0, April 2015, National Cancer Institute. (<http://surveillance.cancer.gov/joinpoint/>).

The APC is the Annual Percent Change based on rates age-adjusted to the 2000 US Std Population (19 age groups - Census P25-1130).

Trends are from the SEER 9 areas (San Francisco, Connecticut, Detroit, Hawaii, Iowa, New Mexico, Seattle, Utah, and Atlanta).

Trends are from the SEER 13 areas (SEER 9 Areas, Los Angeles, San Jose-Monterey, Rural Georgia, and the Alaska Native Registry).

Trends are from US Mortality Files, National Center for Health Statistics, Centers for Disease Control and Prevention.

The AAPC is the Average Annual Percent Change and is based on the APCs calculated by Joinpoint.

API - Asian/Pacific Islander, AI/AN - American Indian/Alaska Native, NH - Non-Hispanic

Hispanic and Non-Hispanic are not mutually exclusive from whites, blacks, Asian/Pacific Islanders, and American Indians/Alaska

Natives. Incidence data for Hispanics and Non-Hispanics are based on NHIA and exclude cases from the Alaska Native Registry.

The Hispanic and Non-Hispanic mortality trends exclude deaths from New Hampshire and Oklahoma.

Data for American Indian/Alaska Native are based on the CHSDA (Contract Health Service Delivery Area) counties.

\* The APC/AAPC is significantly different from zero ( $p < .05$ ).

- Joinpoint regression line analysis could not be performed on data series.

Table 9.2  
Hodgkin Lymphoma

Trends in SEER Incidence<sup>ab</sup> and U.S. Mortality<sup>c</sup> Using the Joinpoint Regression Program,  
1975-2012 With up to Five Joinpoints, 1992-2012 With up to Three Joinpoints,  
Males by Race/Ethnicity

	JP Trend 1		JP Trend 2		JP Trend 3		JP Trend 4		JP Trend 5		JP Trend 6		AAPC <sup>d</sup>	
	Years	APC	Years	APC	Years	APC	Years	APC	Years	APC	Years	APC	2003-12	2008-12
<u>SEER 9 Delay-Adjusted Incidence<sup>a</sup>, 1975-2012</u>														
All Races	1975-03	-0.7*	2003-07	3.7	2007-12	-3.0							-0.1	-3.0
White	1975-89	0.4	1989-92	-4.8	1992-12	0.2							0.2	0.2
Black	1975-12	0.6											0.6	0.6
<u>SEER 13 Delay-Adjusted Incidence<sup>b</sup>, 1992-2012</u>														
All Races	1992-07	0.6*	2007-12	-1.7									-0.7	-1.7
White	1992-12	0.1											0.1	0.1
Black	1992-12	1.2*											1.2*	1.2*
<u>SEER 9 Observed Incidence<sup>a</sup>, 1975-2012</u>														
All Races	1975-03	-0.7*	2003-07	3.6	2007-12	-3.3*							-0.3	-3.3*
White	1975-89	0.4	1989-92	-4.7	1992-12	0.1							0.1	0.1
Black	1975-12	0.5											0.5	0.5
<u>SEER 13 Observed Incidence<sup>b</sup>, 1992-2012</u>														
All Races	1992-07	0.5*	2007-12	-2.0*									-0.9	-2.0*
White	1992-12	0.0											0.0	0.0
White NH <sup>ef</sup>	1992-12	0.3											0.3	0.3
Black	1992-12	1.0*											1.0*	1.0*
Black NH <sup>ef</sup>	1992-12	1.1*											1.1*	1.1*
API <sup>e</sup>	1992-12	1.4											1.4	1.4
AI/AN <sup>eg</sup>	-	-											-	-
Hispanic <sup>f</sup>	1992-12	-0.6											-0.6	-0.6
<u>U.S. Cancer Mortality<sup>c</sup>, 1975-2012</u>														
All Races	1975-97	-4.0*	1997-12	-2.3*									-2.3*	-2.3*
White	1975-96	-4.1*	1996-12	-2.3*									-2.3*	-2.3*
Black	1975-12	-3.2*											-3.2*	-3.2*
<u>U.S. Cancer Mortality<sup>c</sup>, 1992-2012</u>														
All Races	1992-94	-10.7	1994-12	-2.3*									-2.3*	-2.3*
White	1992-94	-11.0	1994-12	-2.2*									-2.2*	-2.2*
White NH <sup>ef</sup>	1992-12	-2.6*											-2.6*	-2.6*
Black	1992-12	-3.2*											-3.2*	-3.2*
Black NH <sup>ef</sup>	1992-12	-3.0*											-3.0*	-3.0*
API <sup>e</sup>	1992-12	-2.7											-2.7	-2.7
AI/AN <sup>eg</sup>	-	-											-	-
Hispanic <sup>f</sup>	1992-12	-2.5*											-2.5*	-2.5*

Joinpoint Regression Program Version 4.2.0, April 2015, National Cancer Institute. (<http://surveillance.cancer.gov/joinpoint/>).

The APC is the Annual Percent Change based on rates age-adjusted to the 2000 US Std Population (19 age groups - Census P25-1130).

Trends are from the SEER 9 areas (San Francisco, Connecticut, Detroit, Hawaii, Iowa, New Mexico, Seattle, Utah, and Atlanta).

Trends are from the SEER 13 areas (SEER 9 Areas, Los Angeles, San Jose-Monterey, Rural Georgia, and the Alaska Native Registry).

Trends are from US Mortality Files, National Center for Health Statistics, Centers for Disease Control and Prevention.

The AAPC is the Average Annual Percent Change and is based on the APCs calculated by Joinpoint.

API - Asian/Pacific Islander, AI/AN - American Indian/Alaska Native, NH - Non-Hispanic

Hispanic and Non-Hispanic are not mutually exclusive from whites, blacks, Asian/Pacific Islanders, and American Indians/Alaska

Natives. Incidence data for Hispanics and Non-Hispanics are based on NHIA and exclude cases from the Alaska Native Registry.

The Hispanic and Non-Hispanic mortality trends exclude deaths from New Hampshire and Oklahoma.

Data for American Indian/Alaska Native are based on the CHSDA (Contract Health Service Delivery Area) counties.

\* The APC/AAPC is significantly different from zero ( $p < .05$ ).

- Joinpoint regression line analysis could not be performed on data series.

Table 9.3  
Hodgkin Lymphoma

Trends in SEER Incidence<sup>ab</sup> and U.S. Mortality<sup>c</sup> Using the Joinpoint Regression Program,  
1975-2012 With up to Five Joinpoints, 1992-2012 With up to Three Joinpoints,  
Females by Race/Ethnicity

	JP Trend 1		JP Trend 2		JP Trend 3		JP Trend 4		JP Trend 5		JP Trend 6		AAPC <sup>d</sup>	
	Years	APC	Years	APC	Years	APC	Years	APC	Years	APC	Years	APC	2003-12	2008-12
<u>SEER 9 Delay-Adjusted Incidence<sup>a</sup>, 1975-2012</u>														
All Races	1975-12	0.3*											0.3*	0.3*
White	1975-12	0.3*											0.3*	0.3*
Black	1975-12	2.0*											2.0*	2.0*
<u>SEER 13 Delay-Adjusted Incidence<sup>b</sup>, 1992-2012</u>														
All Races	1992-12	0.0											0.0	0.0
White	1992-12	0.0											0.0	0.0
Black	1992-12	0.7											0.7	0.7
<u>SEER 9 Observed Incidence<sup>a</sup>, 1975-2012</u>														
All Races	1975-12	0.3*											0.3*	0.3*
White	1975-12	0.2											0.2	0.2
Black	1975-12	1.9*											1.9*	1.9*
<u>SEER 13 Observed Incidence<sup>b</sup>, 1992-2012</u>														
All Races	1992-12	0.0											0.0	0.0
White	1992-12	-0.1											-0.1	-0.1
White NH <sup>ef</sup>	1992-12	-0.1											-0.1	-0.1
Black	1992-12	0.6											0.6	0.6
Black NH <sup>ef</sup>	1992-12	0.8											0.8	0.8
API <sup>e</sup>	1992-12	2.6*											2.6*	2.6*
AI/AN <sup>eg</sup>	-	-											-	-
Hispanic <sup>f</sup>	1992-12	0.6											0.6	0.6
<u>U.S. Cancer Mortality<sup>c</sup>, 1975-2012</u>														
All Races	1975-85	-4.8*	1985-12	-2.7*									-2.7*	-2.7*
White	1975-85	-4.9*	1985-12	-2.6*									-2.6*	-2.6*
Black	1975-12	-2.5*											-2.5*	-2.5*
<u>U.S. Cancer Mortality<sup>c</sup>, 1992-2012</u>														
All Races	1992-12	-2.8*											-2.8*	-2.8*
White	1992-12	-2.7*											-2.7*	-2.7*
White NH <sup>ef</sup>	1992-12	-2.7*											-2.7*	-2.7*
Black	1992-12	-2.5*											-2.5*	-2.5*
Black NH <sup>ef</sup>	1992-12	-2.3*											-2.3*	-2.3*
API <sup>e</sup>	-	-											-	-
AI/AN <sup>eg</sup>	-	-											-	-
Hispanic <sup>f</sup>	1992-12	-2.4*											-2.4*	-2.4*

Joinpoint Regression Program Version 4.2.0, April 2015, National Cancer Institute. (<http://surveillance.cancer.gov/joinpoint/>).

The APC is the Annual Percent Change based on rates age-adjusted to the 2000 US Std Population (19 age groups - Census P25-1130).

<sup>a</sup> Trends are from the SEER 9 areas (San Francisco, Connecticut, Detroit, Hawaii, Iowa, New Mexico, Seattle, Utah, and Atlanta).

<sup>b</sup> Trends are from the SEER 13 areas (SEER 9 Areas, Los Angeles, San Jose-Monterey, Rural Georgia, and the Alaska Native Registry).

<sup>c</sup> Trends are from US Mortality Files, National Center for Health Statistics, Centers for Disease Control and Prevention.

<sup>d</sup> The AAPC is the Average Annual Percent Change and is based on the APCs calculated by Joinpoint.

<sup>e</sup> API - Asian/Pacific Islander, AI/AN - American Indian/Alaska Native, NH - Non-Hispanic

<sup>f</sup> Hispanic and Non-Hispanic are not mutually exclusive from whites, blacks, Asian/Pacific Islanders, and American Indians/Alaska

Natives. Incidence data for Hispanics and Non-Hispanics are based on NHIA and exclude cases from the Alaska Native Registry.

The Hispanic and Non-Hispanic mortality trends exclude deaths from New Hampshire and Oklahoma.

<sup>g</sup> Data for American Indian/Alaska Native are based on the CHSDA (Contract Health Service Delivery Area) counties.

\* The APC/AAPC is significantly different from zero ( $p < .05$ ).

- Joinpoint regression line analysis could not be performed on data series.

Table 9.4  
Hodgkin Lymphoma

Delay-adjusted SEER Incidence<sup>a</sup> Rates by Year, Race and Sex

Year of Diagnosis:	All Races			Whites			Blacks		
	Total	Males	Females	Total	Males	Females	Total	Males	Females
1975	3.09	3.86	2.40	3.23	3.91	2.64	2.58	4.41	1.10
1976	2.76	3.37	2.24	2.88	3.44	2.41	2.57	3.91	1.39
1977	2.98	3.61	2.46	3.27	3.93	2.71	1.68	1.91	1.39
1978	2.80	3.41	2.32	3.07	3.70	2.58	1.47	2.01	1.02
1979	2.93	3.91	2.08	3.09	4.05	2.27	2.86	4.68	1.41
1980	2.77	3.31	2.27	2.98	3.53	2.48	1.82	2.07	1.54
1981	2.92	3.59	2.33	3.22	3.92	2.61	1.43	1.94	0.98
1982	2.93	3.50	2.46	3.13	3.67	2.70	2.58	3.15	2.04
1983	3.03	3.73	2.39	3.33	4.00	2.70	2.11	3.85	0.96
1984	3.06	3.72	2.47	3.38	4.01	2.79	2.07	3.31	1.12
1985	2.98	3.50	2.51	3.31	3.84	2.83	1.74	2.26	1.27
1986	2.73	3.32	2.22	2.91	3.49	2.41	2.27	2.80	1.90
1987	3.05	3.72	2.50	3.34	4.01	2.78	2.12	2.78	1.54
1988	3.10	3.59	2.67	3.43	4.00	2.94	1.94	1.93	1.93
1989	3.06	3.68	2.55	3.36	3.97	2.85	2.16	3.15	1.37
1990	3.07	3.51	2.64	3.30	3.82	2.79	3.02	3.23	2.81
1991	3.02	3.49	2.60	3.34	3.83	2.90	2.40	2.70	2.08
1992	2.87	3.11	2.69	3.05	3.23	2.92	2.66	2.71	2.61
1993	2.86	3.27	2.50	3.08	3.49	2.73	2.96	3.64	2.46
1994	2.86	3.15	2.60	3.15	3.49	2.82	2.15	2.41	1.99
1995	2.76	3.22	2.36	3.05	3.51	2.65	2.32	2.93	1.78
1996	2.85	3.32	2.41	3.13	3.62	2.68	2.46	3.19	1.83
1997	2.82	2.95	2.70	3.07	3.22	2.92	2.57	2.38	2.72
1998	2.79	3.11	2.53	3.13	3.44	2.87	2.15	2.46	1.89
1999	2.86	3.08	2.69	3.10	3.23	3.04	2.52	3.14	2.01
2000	2.82	3.29	2.37	3.07	3.53	2.63	2.42	3.04	1.88
2001	2.57	2.94	2.24	2.74	3.12	2.38	2.46	3.13	1.99
2002	2.96	3.27	2.70	3.15	3.45	2.91	2.96	3.24	2.78
2003	2.72	3.13	2.38	3.02	3.47	2.62	2.41	2.78	2.25
2004	2.95	3.05	2.89	3.11	3.19	3.08	3.19	3.27	3.15
2005	3.03	3.53	2.62	3.26	3.76	2.85	3.21	3.52	2.93
2006	3.02	3.34	2.70	3.23	3.52	2.93	3.19	3.98	2.53
2007	3.20	3.69	2.76	3.48	3.93	3.05	3.37	4.15	2.71
2008	2.98	3.41	2.59	3.24	3.65	2.87	3.14	3.72	2.64
2009	2.96	3.22	2.72	3.26	3.52	3.03	2.68	3.27	2.15
2010	2.82	3.29	2.40	3.05	3.56	2.58	2.58	3.13	2.11
2011	2.76	3.19	2.37	2.96	3.39	2.56	2.96	3.56	2.42
2012	2.78	3.09	2.49	2.99	3.32	2.67	2.91	2.97	2.82

Additional information on the model used to delay-adjust SEER Incidence rates can be found at [\(http://surveillance.cancer.gov/delay/\)](http://surveillance.cancer.gov/delay/).

<sup>a</sup> SEER 9 areas (San Francisco, Connecticut, Detroit, Hawaii, Iowa, New Mexico, Seattle, Utah, and Atlanta). Rates are per 100,000 and are age-adjusted to the 2000 US Std Population (19 age groups - Census P25-1130).

- Delay-adjusted rate is not shown for observed rates based on less than 16 cases for the time interval.

Table 9.5  
Hodgkin Lymphoma

Age-adjusted SEER Incidence<sup>a</sup> Rates by Year, Race and Sex

Year of Diagnosis:	All Races			Whites			Blacks		
	Total	Males	Females	Total	Males	Females	Total	Males	Females
1975-2012	2.90	3.35	2.50	3.14	3.59	2.74	2.53	3.08	2.08
1975	3.09	3.86	2.40	3.23	3.91	2.64	2.58	4.41	-
1976	2.76	3.37	2.24	2.88	3.44	2.41	2.57	3.91	-
1977	2.98	3.61	2.46	3.27	3.93	2.71	1.68	1.91	-
1978	2.80	3.41	2.32	3.07	3.70	2.58	1.47	2.01	-
1979	2.93	3.91	2.08	3.09	4.05	2.27	2.86	4.68	-
1980	2.77	3.31	2.27	2.98	3.53	2.48	1.82	2.07	1.54
1981	2.92	3.59	2.33	3.22	3.92	2.61	1.43	1.94	-
1982	2.93	3.50	2.46	3.13	3.67	2.70	2.58	3.15	2.04
1983	3.03	3.73	2.39	3.33	4.00	2.70	2.11	3.85	-
1984	3.06	3.72	2.47	3.38	4.01	2.79	2.07	3.31	-
1985	2.98	3.50	2.51	3.31	3.84	2.83	1.74	2.26	-
1986	2.73	3.32	2.22	2.91	3.49	2.41	2.27	2.80	1.90
1987	3.05	3.72	2.50	3.34	4.01	2.78	2.12	2.78	1.54
1988	3.10	3.59	2.67	3.43	4.00	2.94	1.94	1.93	1.93
1989	3.06	3.68	2.55	3.36	3.97	2.85	2.16	3.15	1.37
1990	3.07	3.51	2.64	3.30	3.82	2.79	3.02	3.23	2.81
1991	3.02	3.49	2.60	3.34	3.83	2.90	2.40	2.70	2.08
1992	2.87	3.11	2.69	3.05	3.23	2.92	2.66	2.71	2.61
1993	2.86	3.27	2.50	3.08	3.49	2.73	2.96	3.64	2.46
1994	2.86	3.15	2.60	3.15	3.49	2.82	2.15	2.41	1.99
1995	2.76	3.22	2.36	3.05	3.51	2.65	2.32	2.93	1.78
1996	2.85	3.32	2.41	3.13	3.62	2.68	2.46	3.19	1.83
1997	2.82	2.95	2.70	3.07	3.22	2.92	2.57	2.38	2.72
1998	2.79	3.11	2.53	3.13	3.44	2.87	2.15	2.46	1.89
1999	2.86	3.08	2.69	3.10	3.23	3.03	2.52	3.14	2.01
2000	2.81	3.29	2.37	3.06	3.53	2.63	2.42	3.03	1.87
2001	2.57	2.93	2.23	2.73	3.11	2.37	2.45	3.12	1.98
2002	2.95	3.27	2.69	3.14	3.44	2.90	2.95	3.23	2.77
2003	2.72	3.12	2.37	3.01	3.46	2.61	2.40	2.76	2.23
2004	2.94	3.04	2.88	3.10	3.18	3.07	3.17	3.25	3.13
2005	3.02	3.52	2.61	3.24	3.74	2.83	3.18	3.49	2.90
2006	3.00	3.33	2.69	3.21	3.50	2.91	3.16	3.93	2.51
2007	3.18	3.67	2.74	3.45	3.90	3.03	3.33	4.10	2.68
2008	2.96	3.39	2.57	3.21	3.62	2.84	3.09	3.67	2.60
2009	2.93	3.19	2.70	3.22	3.47	2.99	2.64	3.21	2.12
2010	2.79	3.26	2.37	3.01	3.51	2.54	2.53	3.08	2.08
2011	2.73	3.15	2.34	2.91	3.33	2.51	2.89	3.46	2.37
2012	2.71	3.02	2.43	2.90	3.23	2.59	2.81	2.86	2.72

<sup>a</sup> SEER 9 areas (San Francisco, Connecticut, Detroit, Hawaii, Iowa, New Mexico, Seattle, Utah, and Atlanta). Rates are per 100,000 and are age-adjusted to the 2000 US Std Population (19 age groups - Census P25-1130).  
- Statistic not shown. Rate based on less than 16 cases for the time interval.

Table 9.6  
Hodgkin Lymphoma

Age-adjusted U.S. Death<sup>a</sup> Rates by Year, Race and Sex

Year of Death:	All Races			Whites			Blacks		
	Total	Males	Females	Total	Males	Females	Total	Males	Females
1975-2012	0.62	0.78	0.49	0.65	0.81	0.51	0.53	0.71	0.39
1975	1.31	1.69	1.00	1.35	1.73	1.04	1.07	1.50	0.72
1976	1.17	1.50	0.90	1.20	1.52	0.94	0.97	1.44	0.60
1977	1.14	1.45	0.87	1.18	1.49	0.90	0.92	1.20	0.69
1978	1.06	1.35	0.82	1.10	1.38	0.87	0.76	1.17	0.44
1979	0.97	1.27	0.71	1.00	1.31	0.74	0.76	1.06	0.51
1980	0.98	1.23	0.76	1.01	1.27	0.80	0.75	1.09	0.48
1981	0.93	1.15	0.74	0.96	1.19	0.76	0.74	0.88	0.62
1982	0.88	1.09	0.70	0.92	1.15	0.72	0.70	0.78	0.62
1983	0.85	1.09	0.65	0.88	1.13	0.68	0.64	0.90	0.45
1984	0.86	1.18	0.60	0.88	1.19	0.63	0.79	1.18	0.47
1985	0.77	0.98	0.58	0.78	1.00	0.60	0.71	0.96	0.51
1986	0.78	1.00	0.58	0.80	1.04	0.60	0.65	0.85	0.49
1987	0.74	0.96	0.56	0.77	0.98	0.58	0.67	0.94	0.46
1988	0.67	0.88	0.50	0.69	0.91	0.51	0.59	0.75	0.48
1989	0.71	0.92	0.54	0.73	0.94	0.56	0.66	0.92	0.47
1990	0.66	0.85	0.50	0.69	0.88	0.52	0.56	0.81	0.36
1991	0.65	0.83	0.51	0.66	0.83	0.51	0.67	0.89	0.49
1992	0.65	0.83	0.50	0.67	0.86	0.52	0.58	0.77	0.45
1993	0.61	0.79	0.47	0.63	0.80	0.50	0.57	0.83	0.39
1994	0.56	0.66	0.47	0.56	0.66	0.48	0.55	0.73	0.41
1995	0.55	0.67	0.44	0.56	0.68	0.46	0.53	0.73	0.36
1996	0.53	0.64	0.44	0.55	0.65	0.46	0.47	0.63	0.36
1997	0.53	0.62	0.46	0.54	0.63	0.47	0.54	0.67	0.43
1998	0.48	0.61	0.36	0.49	0.62	0.37	0.48	0.66	0.33
1999	0.51	0.63	0.41	0.53	0.66	0.43	0.41	0.55	0.30
2000	0.46	0.55	0.39	0.48	0.57	0.41	0.35	0.42	0.30
2001	0.47	0.56	0.38	0.48	0.59	0.39	0.42	0.52	0.35
2002	0.47	0.58	0.38	0.49	0.60	0.41	0.40	0.57	0.27
2003	0.46	0.55	0.39	0.48	0.57	0.41	0.36	0.47	0.27
2004	0.43	0.55	0.34	0.44	0.57	0.35	0.40	0.47	0.34
2005	0.42	0.51	0.36	0.43	0.51	0.37	0.42	0.55	0.32
2006	0.44	0.56	0.33	0.45	0.57	0.35	0.41	0.56	0.30
2007	0.41	0.51	0.33	0.43	0.53	0.35	0.36	0.45	0.29
2008	0.37	0.45	0.31	0.39	0.47	0.33	0.33	0.39	0.28
2009	0.40	0.48	0.32	0.41	0.49	0.34	0.39	0.48	0.30
2010	0.38	0.49	0.29	0.40	0.51	0.31	0.30	0.36	0.26
2011	0.36	0.47	0.27	0.37	0.48	0.28	0.35	0.50	0.24
2012	0.34	0.42	0.27	0.35	0.43	0.28	0.33	0.41	0.26

<sup>a</sup> US Mortality Files, National Center for Health Statistics, Centers for Disease Control and Prevention. Rates are per 100,000 and are age-adjusted to the 2000 US Std Population (19 age groups - Census P25-1130).  
- Statistic not shown. Rate based on less than 16 cases for the time interval.

Table 9.7  
Hodgkin LymphomaSEER Incidence<sup>a</sup> and U.S. Death<sup>b</sup> Rates, Age-Adjusted and Age-Specific Rates, by Race and Sex

	All Races			Whites			Blacks		
	Total	Males	Females	Total	Males	Females	Total	Males	Females
<u>SEER Incidence</u>									
<u>Age at Diagnosis</u>									
Age-Adjusted Rates, 2008-2012									
All ages	2.7	3.0	2.4	2.9	3.2	2.6	2.7	3.0	2.4
Under 65	2.5	2.7	2.3	2.6	2.9	2.4	2.7	3.1	2.4
65 and over	4.0	5.0	3.3	4.4	5.4	3.6	2.5	2.7	2.3
All ages (IARC world std) <sup>c</sup>	2.4	2.7	2.2	2.6	2.8	2.4	2.5	2.7	2.2
Age-Specific Rates, 2008-2012									
<1	-	-	-	-	-	-	-	-	-
1-4	0.1	0.2	-	0.1	0.2	-	-	-	-
5-9	0.5	0.6	0.3	0.5	0.6	0.3	0.5	-	-
10-14	1.2	1.3	1.1	1.3	1.4	1.2	1.3	1.3	1.3
15-19	3.2	3.0	3.3	3.5	3.4	3.6	2.2	2.0	2.4
20-24	4.4	4.3	4.6	4.8	4.6	4.9	3.7	3.8	3.6
25-29	4.1	4.0	4.1	4.3	4.2	4.5	4.3	4.3	4.2
30-34	3.7	3.8	3.5	4.0	4.1	3.8	3.8	4.2	3.4
35-39	2.8	3.1	2.5	2.9	3.3	2.5	3.5	3.8	3.2
40-44	2.7	3.2	2.2	2.9	3.3	2.5	3.4	4.8	2.2
45-49	2.4	3.0	1.9	2.6	3.1	2.0	3.3	4.3	2.4
50-54	2.4	3.0	1.8	2.4	3.0	1.9	3.2	4.1	2.5
55-59	2.5	3.0	1.9	2.6	3.1	2.0	2.7	3.5	2.0
60-64	2.8	3.1	2.5	2.9	3.3	2.5	3.5	2.9	3.9
65-69	3.3	4.1	2.6	3.6	4.3	2.9	3.1	3.5	2.7
70-74	4.2	5.0	3.5	4.5	5.4	3.8	2.9	3.4	2.5
75-79	4.6	5.6	3.8	5.2	6.3	4.3	-	-	-
80-84	4.4	5.6	3.6	4.7	5.9	3.9	3.2	-	-
85+	3.7	5.0	3.1	4.0	5.7	3.2	-	-	-
<u>U.S. Mortality</u>									
<u>Age at Death</u>									
Age-Adjusted Rates, 2008-2012									
All ages	0.4	0.5	0.3	0.4	0.5	0.3	0.3	0.4	0.3
Under 65	0.2	0.2	0.2	0.2	0.2	0.2	0.3	0.3	0.2
65 and over	1.5	1.9	1.2	1.6	2.0	1.3	0.9	1.1	0.8
All ages (IARC world std) <sup>c</sup>	0.3	0.3	0.2	0.3	0.3	0.2	0.3	0.3	0.2
Age-Specific Rates, 2008-2012									
<1	-	-	-	-	-	-	-	-	-
1-4	-	-	-	-	-	-	-	-	-
5-9	-	-	-	-	-	-	-	-	-
10-14	-	-	-	-	-	-	-	-	-
15-19	0.1	0.1	0.0	0.1	0.1	0.1	-	-	-
20-24	0.2	0.2	0.2	0.2	0.2	0.1	0.2	0.2	0.2
25-29	0.2	0.3	0.2	0.2	0.3	0.2	0.3	0.4	0.3
30-34	0.3	0.3	0.3	0.3	0.3	0.3	0.4	0.3	0.4
35-39	0.3	0.4	0.2	0.3	0.3	0.2	0.4	0.6	0.3
40-44	0.3	0.3	0.2	0.3	0.3	0.2	0.3	0.4	-
45-49	0.3	0.4	0.2	0.3	0.4	0.2	0.4	0.5	0.2
50-54	0.3	0.4	0.2	0.3	0.4	0.2	0.4	0.6	0.2
55-59	0.4	0.5	0.4	0.5	0.5	0.4	0.5	0.6	0.5
60-64	0.5	0.7	0.4	0.6	0.7	0.5	0.6	0.8	0.4
65-69	0.8	1.1	0.6	0.9	1.1	0.6	0.8	1.1	0.5
70-74	1.2	1.5	1.0	1.3	1.7	1.0	0.8	0.9	0.7
75-79	1.6	2.0	1.3	1.8	2.2	1.5	0.8	-	-
80-84	2.3	2.9	1.9	2.5	3.1	2.0	1.0	-	1.1
85+	2.4	3.3	1.9	2.5	3.4	2.0	1.6	-	1.5

<sup>a</sup> SEER 18 areas. Rates are per 100,000 and are age-adjusted to the 2000 US Std Population (19 age groups - Census P25-1130), unless noted.

<sup>b</sup> US Mortality Files, National Center for Health Statistics, Centers for Disease Control and Prevention.

<sup>c</sup> Rates are per 100,000 and are age-adjusted to the 2000 US Std Population (19 age groups - Census P25-1130), unless noted.

- Rates are per 100,000 and are age-adjusted to the IARC world standard population.

- Statistic not shown. Rate based on less than 16 cases for the time interval.

Table 9.8  
Hodgkin Lymphoma

## 5-Year Relative and Period Survival (Percent) by Race, Sex, Diagnosis Year and Age

	All Races			Whites			Blacks		
	Total	Males	Females	Total	Males	Females	Total	Males	Females
5-Year Relative Survival (Percent)									
Year of Diagnosis:									
1960-1963 <sup>a</sup>	-	-	-	40	34	48	-	-	-
1970-1973 <sup>a</sup>	-	-	-	67	66	69	-	-	-
1975-1977 <sup>b</sup>	71.8	69.9	74.3	72.1	70.2	74.5	70.1	68.5 <sup>g</sup>	73.3 <sup>g</sup>
1978-1980 <sup>b</sup>	71.7	70.3	73.5	71.8	69.8	74.3	70.6	74.7 <sup>g</sup>	63.1 <sup>g</sup>
1981-1983 <sup>b</sup>	74.2	72.9	75.8	74.6	73.7	75.6	71.8	69.6 <sup>g</sup>	75.9 <sup>g</sup>
1984-1986 <sup>b</sup>	78.2	76.4	80.6	78.7	76.8	81.1	74.7	75.7 <sup>g</sup>	72.1 <sup>g</sup>
1987-1989 <sup>b</sup>	79.2	76.6	82.5	79.7	76.8	83.3	72.3	70.9 <sup>g</sup>	74.0 <sup>g</sup>
1990-1992 <sup>b</sup>	81.7	79.2	84.7	82.8	81.0	85.0	74.2	64.9	84.3
1993-1995 <sup>b</sup>	81.7	79.2	84.7	82.1	80.0	84.7	78.3	74.0	83.0
1996-1998 <sup>b</sup>	85.1	84.4	85.9	85.7	84.3	87.3	81.1	84.3	77.7
1999-2001 <sup>b</sup>	85.0	82.7	87.9	85.7	83.9	87.8	81.3	75.1	89.6
2002-2004 <sup>b</sup>	86.2	85.2	87.2	87.7	87.0	88.4	79.0	74.2	82.6
2005-2011 <sup>b</sup>	88.3 <sup>f</sup>	87.3 <sup>f</sup>	89.5 <sup>f</sup>	88.9 <sup>f</sup>	88.5 <sup>f</sup>	89.1 <sup>f</sup>	85.5 <sup>f</sup>	80.1 <sup>f</sup>	91.6 <sup>f</sup>
5-Year Period Survival (Percent) <sup>cd</sup>									
2011	85.8	84.6	87.3	86.3	85.5	87.2	81.9	77.4	87.0
Stage Distribution (%) 2005-2011 <sup>ce</sup>									
All Stages									
Number of cases	14,979	8,183	6,796	12,174	6,676	5,498	1,851	989	862
Percent	100%	100%	100%	100%	100%	100%	100%	100%	100%
Localized	16	17	15	16	18	14	19	20	19
Regional	41	36	47	42	36	48	33	27	39
Distant	39	43	34	38	42	33	45	51	39
Unstaged	4	4	5	4	4	5	3	3	3
5-Year Relative Survival (Percent), 2005-2011 <sup>c</sup>									
Age at Diagnosis:									
Ages <45	94.1	93.3	95.1	94.9	94.4	95.4	88.6	84.9	92.7
Ages 45-54	86.0	84.2	88.7	87.4	86.1	89.5	76.7	71.0	85.4
Ages 55-64	77.3	77.7	76.7	79.1	80.0	77.5	63.8	56.4 <sup>g</sup>	70.9 <sup>g</sup>
Ages 65-74	64.3	62.5	66.5	63.8	61.2	67.2	70.1 <sup>g</sup>	77.6 <sup>g</sup>	61.6 <sup>g</sup>
Ages 75+	41.5	39.1	43.1	41.8	38.6	43.8	49.0 <sup>h</sup>	-	39.7 <sup>h</sup>
Ages <65	91.0	89.9	92.4	91.9	91.2	92.8	84.3	80.0	89.3
Ages 65+	53.6	52.9	54.3	53.2	51.5	54.8	65.0 <sup>g</sup>	76.1 <sup>g</sup>	54.0 <sup>g</sup>
Stage <sup>e</sup> :									
All Stages	85.9	85.1	86.9	86.1	85.6	86.8	83.1	79.8	86.6
Localized	91.0	92.1	89.4	91.3	92.3	89.8	88.5	88.4	87.7
Regional	92.8	92.3	93.3	93.1	92.6	93.5	90.0	89.1	90.7
Distant	76.9	76.6	77.4	76.7	76.9	76.2	76.0	71.4	82.6
Unstaged	80.8	78.8	82.6	80.9	79.1	82.5	71.9 <sup>g</sup>	71.5 <sup>h</sup>	-

<sup>a</sup> Based on End Results data from a series of hospital registries and one population-based registry.

<sup>b</sup> SEER 9 areas (San Francisco, Connecticut, Detroit, Hawaii, Iowa, New Mexico, Seattle, Utah, Atlanta).

Based on follow-up of patients into 2012.

<sup>c</sup> SEER 18 areas (San Francisco, Connecticut, Detroit, Hawaii, Iowa, New Mexico, Seattle, Utah, Atlanta, San Jose-Monterey, Los Angeles, Alaska Native Registry, Rural Georgia, California excluding SF/SJM/LA, Kentucky, Louisiana, New Jersey and Georgia excluding ATL/RG).

Based on follow-up of patients into 2012.

<sup>d</sup> Period survival provides a 2011 estimate of survival by piecing together the most recent conditional survival estimates from several cohorts. It is computed here using three year calendar blocks (2009-2011: 0-1 year survival), (2008-2010: 1-2 year survival), (2007-2009: 2-3 year survival), (2006-2008: 3-4 year survival), (2005-2007: 4-5 years survival).

<sup>e</sup> Stage at diagnosis is classified using SEER Summary Stage 2000. Stage distribution percentages may not sum to 100 due to rounding.

<sup>f</sup> The difference between 1975-1977 and 2005-2011 is statistically significant (p<.05).

<sup>g</sup> The standard error is between 5 and 10 percentage points.

<sup>h</sup> The standard error is greater than 10 percentage points.

- Statistic could not be calculated due to fewer than 25 cases during the time period.



Table 9.9  
Hodgkin Lymphoma

SEER<sup>a</sup> Relative Survival (Percent)  
By Year of Diagnosis

All Races, Males and Females

Year of Diagnosis

	1975- 1979	1980- 1984	1985- 1989	1990- 1994	1995	1996	1997	1998	1999	2000	2001	2002	2003	2004	2005	2006	2007	2008	2009	2010	2011
Survival Time																					
1-year	86.9	89.4	90.7	92.0	92.9	91.5	93.6	94.5	91.0	92.4	94.0	92.8	93.2	91.5	93.4	92.5	93.3	94.4	91.9	91.7	93.5
2-year	80.8	83.6	86.2	87.7	88.6	88.1	90.9	90.4	87.7	90.6	90.7	89.8	92.2	89.5	90.9	90.2	92.5	92.6	89.4	90.4	
3-year	76.5	80.0	83.0	85.2	86.5	86.7	89.3	88.3	85.4	88.7	88.4	88.4	90.1	87.3	90.3	89.2	90.7	91.5	87.9		
4-year	73.7	77.3	80.5	83.2	83.6	84.6	88.4	86.5	84.2	87.8	86.6	86.1	88.1	86.1	89.4	88.6	88.9	90.5			
5-year	71.4	74.8	79.0	81.6	82.2	83.2	87.2	84.9	83.4	86.3	85.2	85.1	87.5	86.0	88.3	88.4	88.4				
6-year	69.0	72.3	77.4	80.1	80.1	81.7	85.9	83.7	82.2	85.4	84.3	84.6	87.0	84.9	87.9	87.3					
7-year	67.1	70.5	75.1	78.6	78.9	80.0	85.2	82.9	80.9	84.6	84.2	83.3	86.3	84.3	87.3						
8-year	65.0	69.2	74.0	77.8	78.4	79.3	84.7	82.4	80.0	83.6	83.8	82.3	85.6	83.3							
9-year	63.0	67.8	73.2	76.8	77.2	78.2	84.4	81.4	79.0	82.7	82.7	81.2	84.8								
10-year	61.7	66.7	72.6	76.0	76.6	76.6	83.8	80.2	78.1	82.7	81.8	80.4									
11-year	60.4	65.7	71.6	75.4	75.6	75.5	83.4	79.5	78.0	82.6	81.2										
12-year	59.4	64.5	70.8	74.7	75.5	74.8	82.8	79.1	77.5	82.1											
13-year	58.7	63.7	69.6	74.0	75.4	74.2	81.7	78.8	76.2												
14-year	57.4	62.5	68.6	73.6	75.4	73.4	80.0	78.2													
15-year	56.4	61.7	67.4	72.9	75.3	73.0	79.1														
16-year	55.6	60.6	66.6	72.5	75.0	73.0															
17-year	54.6	59.3	66.1	71.8	74.5																
18-year	53.7	58.4	65.5	71.1																	
19-year	53.1	57.8	64.7																		
20-year	52.1	56.7	64.1																		

<sup>a</sup> Based on the SEER 9 areas (San Francisco, Connecticut, Detroit, Hawaii, Iowa, New Mexico, Seattle, Utah, and Atlanta).

Table 9.10  
Hodgkin Lymphoma

SEER<sup>a</sup> Relative Survival (Percent)  
By Year of Diagnosis

All Races, Males

Year of Diagnosis

	1975- 1979	1980- 1984	1985- 1989	1990- 1994	1995	1996	1997	1998	1999	2000	2001	2002	2003	2004	2005	2006	2007	2008	2009	2010	2011
Survival Time																					
1-year	85.9	89.4	89.8	91.1	92.2	92.7	92.1	94.3	89.3	90.8	92.8	90.8	93.0	89.7	93.3	91.7	92.4	93.0	92.5	90.2	92.6
2-year	80.2	83.5	84.6	85.8	88.0	88.6	89.5	90.9	86.1	88.4	89.0	88.2	92.2	88.4	90.7	89.3	91.6	91.2	89.2	89.4	
3-year	75.3	80.2	81.3	83.0	85.1	87.1	87.4	88.8	83.6	85.4	86.5	86.7	90.2	86.4	90.0	88.9	89.4	90.3	87.4		
4-year	71.7	77.2	78.3	80.8	81.0	85.0	86.9	86.4	82.8	83.7	85.0	84.8	86.8	85.8	88.7	87.7	87.6	88.9			
5-year	69.2	74.1	76.4	79.0	80.2	83.0	85.8	84.4	82.5	81.8	83.6	83.7	86.1	85.8	87.5	87.4	86.9				
6-year	66.5	71.4	74.6	77.2	78.8	81.8	83.5	83.5	80.5	80.6	82.0	83.0	86.1	83.8	86.8	86.1					
7-year	64.4	69.6	71.8	76.0	77.6	79.6	82.9	82.2	78.7	79.9	81.7	81.1	85.1	83.6	85.9						
8-year	62.4	68.1	70.4	74.8	76.5	78.6	82.2	81.7	77.5	78.7	81.3	79.9	84.2	82.7							
9-year	60.0	66.9	69.2	73.8	75.3	77.5	82.2	80.2	76.1	78.5	79.5	79.0	82.7								
10-year	58.9	65.6	68.6	73.2	75.3	75.2	81.0	78.2	75.1	78.1	78.0	78.4									
11-year	57.5	64.6	67.1	72.5	74.3	73.8	80.7	77.6	75.1	77.5	77.1										
12-year	56.4	63.2	66.0	71.9	74.2	72.5	80.3	77.1	74.1	76.9											
13-year	55.7	62.6	64.3	70.9	74.2	71.9	78.5	76.9	71.5												
14-year	54.3	61.2	63.3	70.7	74.2	70.5	76.8	75.9													
15-year	53.1	60.5	62.0	69.9	74.2	69.9	75.7														
16-year	52.4	59.4	61.1	69.5	74.2	69.9															
17-year	51.1	58.0	60.7	68.8	74.2																
18-year	50.1	57.0	59.9	68.0																	
19-year	49.5	56.5	59.4																		
20-year	48.5	55.2	58.5																		

<sup>a</sup> Based on the SEER 9 areas (San Francisco, Connecticut, Detroit, Hawaii, Iowa, New Mexico, Seattle, Utah, and Atlanta).

Table 9.11  
Hodgkin Lymphoma

SEER<sup>a</sup> Relative Survival (Percent)  
By Year of Diagnosis

All Races, Females

Year of Diagnosis

	1975- 1979	1980- 1984	1985- 1989	1990- 1994	1995	1996	1997	1998	1999	2000	2001	2002	2003	2004	2005	2006	2007	2008	2009	2010	2011
Survival Time																					
1-year	88.1	89.5	91.8	93.0	93.7	90.0	95.1	94.9	92.9	94.5	95.3	95.1	93.4	93.3	93.4	93.4	94.5	96.1	91.3	93.4	94.7
2-year	81.6	83.7	88.2	89.9	89.3	87.4	92.3	89.8	89.4	93.6	92.7	91.5	92.2	90.6	91.1	91.3	93.4	94.1	89.5	91.8	
3-year	78.2	79.7	85.1	87.7	88.1	86.2	91.3	87.6	87.5	93.1	90.9	90.2	90.0	88.3	90.6	89.4	92.4	92.8	88.3		
4-year	76.2	77.6	83.2	86.0	86.7	83.9	89.8	86.5	85.7	93.1	88.5	87.5	89.6	86.2	90.4	89.4	90.7	92.3			
5-year	74.4	75.7	82.1	84.7	84.6	83.5	88.5	85.3	84.4	92.5	87.1	86.7	89.1	86.1	89.2	89.3	90.1				
6-year	72.3	73.4	81.0	83.4	81.8	81.4	88.5	84.0	83.9	92.0	86.9	86.5	88.1	85.7	89.1	88.7					
7-year	70.8	71.8	79.2	81.8	80.6	80.4	87.7	83.6	83.2	91.1	86.9	85.7	87.7	84.9	89.0						
8-year	68.5	70.6	78.4	81.3	80.6	80.1	87.2	83.1	82.6	90.3	86.9	84.9	87.1	83.8							
9-year	66.9	68.9	78.1	80.3	79.4	78.9	86.6	82.6	82.2	88.5	86.8	83.5	87.1								
10-year	65.4	68.1	77.6	79.4	78.2	78.4	86.5	82.2	81.3	88.5	86.6	82.6									
11-year	64.2	67.1	77.3	78.8	77.4	77.5	86.1	81.7	80.8	88.5	86.5										
12-year	63.5	66.3	76.7	77.9	76.8	77.4	85.1	81.2	80.8	88.5											
13-year	62.5	65.2	76.1	77.5	76.1	77.1	84.9	80.8	80.8												
14-year	61.5	64.3	75.2	77.0	76.1	76.8	83.3	80.8													
15-year	60.7	63.3	74.0	76.5	75.8	76.8	82.5														
16-year	59.9	62.3	73.5	76.0	75.7	76.8															
17-year	59.3	61.0	72.8	75.4	75.0																
18-year	58.5	60.2	72.3	74.8																	
19-year	57.8	59.5	71.4																		
20-year	56.8	58.8	71.0																		

<sup>a</sup> Based on the SEER 9 areas (San Francisco, Connecticut, Detroit, Hawaii, Iowa, New Mexico, Seattle, Utah, and Atlanta).

Table 9.12  
Hodgkin Lymphoma

Risk of Being Diagnosed With Cancer in 10, 20 and 30 Years,  
Lifetime Risk of Being Diagnosed with Cancer Given Alive and Cancer-Free at Current Age, and  
Lifetime Risk of Dying from Cancer Given Alive at Current Age  
Both Sexes, 2010-2012 By Race/Ethnicity

Race/ Ethnicity	Current Age	Risk of Being Diagnosed with Cancer					Risk of Dying from Cancer	Race/ Ethnicity	Current Age	Risk of Being Diagnosed with Cancer					Risk of Dying from Cancer
		+10 yrs	+20 yrs	+30 yrs	Ever	+10 yrs				+20 yrs	+30 yrs	Ever			
All Races	0	0.00	0.02	0.06	0.22	0.04	Asian/ Pacific Islander	0	0.00	0.02	0.04	0.12	0.02		
	10	0.02	0.06	0.09	0.22	0.04		10	0.01	0.04	0.06	0.12	0.03		
	20	0.04	0.07	0.10	0.20	0.04		20	0.03	0.04	0.05	0.11	0.02		
	30	0.03	0.06	0.08	0.16	0.04		30	0.01	0.02	0.03	0.08	0.02		
	40	0.02	0.05	0.07	0.13	0.03		40	0.01	0.02	0.03	0.07	0.02		
	50	0.02	0.05	0.08	0.10	0.03		50	0.01	0.02	0.04	0.06	0.02		
	60	0.03	0.06	0.08	0.09	0.03		60	0.01	0.03	0.05	0.05	0.02		
	70	0.04	0.06	-	0.07	0.03		70	0.02	0.04	-	0.04	0.02		
80	0.03	-	-	0.04	0.02	80	0.02	-	-	0.02	0.02				
White	0	0.00	0.03	0.07	0.23	0.04	American Indian/ Alaska Native <sup>a</sup>	0	0.00	0.01	0.01	0.10	0.02		
	10	0.02	0.07	0.10	0.23	0.04		10	0.01	0.01	0.03	0.10	0.02		
	20	0.04	0.08	0.10	0.21	0.04		20	0.01	0.02	0.02	0.09	0.02		
	30	0.03	0.06	0.08	0.17	0.04		30	0.01	0.01	0.03	0.09	0.02		
	40	0.03	0.05	0.08	0.13	0.04		40	0.00	0.02	0.03	0.08	0.02		
	50	0.02	0.05	0.09	0.11	0.03		50	0.01	0.03	0.06	0.08	0.02		
	60	0.03	0.07	0.09	0.09	0.03		60	0.02	0.05	0.07	0.07	0.02		
	70	0.04	0.07	-	0.07	0.03		70	0.04	0.06	-	0.06	0.02		
80	0.03	-	-	0.04	0.02	80	0.02	-	-	0.02	0.02				
Black	0	0.00	0.02	0.06	0.19	0.03	Hispanic <sup>b</sup>	0	0.00	0.02	0.05	0.21	0.05		
	10	0.02	0.05	0.09	0.19	0.03		10	0.02	0.04	0.06	0.21	0.05		
	20	0.04	0.07	0.11	0.18	0.03		20	0.03	0.05	0.06	0.19	0.05		
	30	0.04	0.07	0.10	0.14	0.03		30	0.02	0.04	0.06	0.16	0.05		
	40	0.03	0.06	0.09	0.11	0.02		40	0.02	0.04	0.07	0.15	0.05		
	50	0.03	0.05	0.07	0.08	0.02		50	0.02	0.05	0.10	0.13	0.05		
	60	0.03	0.05	0.05	0.06	0.02		60	0.03	0.08	0.10	0.11	0.05		
	70	0.02	0.03	-	0.03	0.01		70	0.05	0.08	-	0.09	0.04		
80	0.01	-	-	0.02	0.01	80	0.03	-	-	0.05	0.03				

Devcan 6.8.0, August 2014, National Cancer Institute (<http://surveillance.cancer.gov/devcan/>).

Source: Incidence data are from the SEER 18 areas (San Francisco, Connecticut, Detroit, Hawaii, Iowa, New Mexico, Seattle, Utah, Atlanta, San Jose-Monterey, Los Angeles, Alaska Native Registry, Rural Georgia, California excluding SF/SJM/LA, Kentucky, Louisiana, New Jersey, and Georgia excluding ATL/RG). Mortality data are from the NCHS public use data file for the total US.

<sup>a</sup> Underlying incidence and mortality data for American Indian/Alaska Native are based on the CHSDA (Contract Health Service Delivery Area) counties.

<sup>b</sup> Hispanic is not mutually exclusive from whites, blacks, Asian/Pacific Islanders, and American Indians/Alaska Natives. Underlying incidence data for Hispanics are based on NHIA and exclude cases from the Alaska Native Registry.

- Statistic could not be calculated.

A percent of 0.00 represents a value that is below 0.005.

Table 9.13  
Hodgkin Lymphoma

Risk of Being Diagnosed With Cancer in 10, 20 and 30 Years,  
Lifetime Risk of Being Diagnosed with Cancer Given Alive and Cancer-Free at Current Age, and  
Lifetime Risk of Dying from Cancer Given Alive at Current Age  
Males, 2010-2012 By Race/Ethnicity

Race/ Ethnicity	Current Age	Risk of Being Diagnosed with Cancer				Risk of Dying from Cancer	Race/ Ethnicity	Current Age	Risk of Being Diagnosed with Cancer				Risk of Dying from Cancer
		+10 yrs	+20 yrs	+30 yrs	Ever				+10 yrs	+20 yrs	+30 yrs	Ever	
All Races	0	0.00	0.03	0.07	0.24	0.04	Asian/ Pacific Islander	0	0.01	0.02	0.05	0.14	0.03
	10	0.02	0.06	0.10	0.24	0.04		10	0.01	0.04	0.06	0.14	0.03
	20	0.04	0.07	0.10	0.22	0.04		20	0.03	0.04	0.05	0.12	0.03
	30	0.03	0.06	0.09	0.18	0.04		30	0.02	0.02	0.04	0.10	0.03
	40	0.03	0.06	0.09	0.15	0.04		40	0.01	0.02	0.04	0.08	0.03
	50	0.03	0.06	0.09	0.12	0.04		50	0.01	0.03	0.05	0.07	0.03
	60	0.03	0.07	0.09	0.10	0.04		60	0.02	0.04	0.06	0.06	0.03
	70	0.04	0.07	-	0.08	0.03		70	0.03	0.04	-	0.05	0.03
80	0.04	-	-	0.04	0.03	80	0.02	-	-	0.03	0.02		
White	0	0.00	0.03	0.07	0.25	0.05	American Indian/ Alaska Native <sup>a</sup>	0	0.00	0.01	0.02	0.10	0.03
	10	0.02	0.07	0.10	0.25	0.05		10	0.01	0.02	0.03	0.10	0.03
	20	0.04	0.08	0.11	0.23	0.05		20	0.01	0.02	0.02	0.09	0.03
	30	0.04	0.07	0.09	0.19	0.04		30	0.01	0.01	0.01	0.08	0.03
	40	0.03	0.06	0.09	0.15	0.04		40	0.00	0.00	0.03	0.08	0.03
	50	0.03	0.06	0.10	0.13	0.04		50	0.00	0.03	0.07	0.08	0.03
	60	0.03	0.08	0.10	0.10	0.04		60	0.03	0.08	0.08	0.08	0.03
	70	0.05	0.08	-	0.08	0.04		70	0.06	0.06	-	0.06	0.03
80	0.04	-	-	0.05	0.03	80	0.01	-	-	0.01	0.04		
Black	0	0.00	0.02	0.06	0.21	0.03	Hispanic <sup>b</sup>	0	0.00	0.02	0.05	0.23	0.07
	10	0.02	0.05	0.09	0.21	0.03		10	0.02	0.04	0.06	0.23	0.07
	20	0.04	0.08	0.12	0.20	0.03		20	0.03	0.05	0.07	0.21	0.07
	30	0.04	0.08	0.12	0.16	0.03		30	0.02	0.04	0.07	0.19	0.06
	40	0.04	0.08	0.10	0.13	0.03		40	0.02	0.05	0.08	0.17	0.06
	50	0.03	0.06	0.08	0.09	0.03		50	0.03	0.06	0.12	0.15	0.06
	60	0.03	0.05	0.06	0.06	0.02		60	0.04	0.09	0.12	0.14	0.06
	70	0.03	0.04	-	0.04	0.02		70	0.06	0.09	-	0.11	0.05
80	0.01	-	-	0.01	0.01	80	0.04	-	-	0.06	0.04		

Devcan 6.8.0, August 2014, National Cancer Institute (<http://surveillance.cancer.gov/devcan/>).

Source: Incidence data are from the SEER 18 areas (San Francisco, Connecticut, Detroit, Hawaii, Iowa, New Mexico, Seattle, Utah, Atlanta, San Jose-Monterey, Los Angeles, Alaska Native Registry, Rural Georgia, California excluding SF/SJM/LA, Kentucky, Louisiana, New Jersey, and Georgia excluding ATL/RG). Mortality data are from the NCHS public use data file for the total US.

<sup>a</sup> Underlying incidence and mortality data for American Indian/Alaska Native are based on the CHSDA (Contract Health Service Delivery Area) counties.

<sup>b</sup> Hispanic is not mutually exclusive from whites, blacks, Asian/Pacific Islanders, and American Indians/Alaska Natives. Underlying incidence data for Hispanics are based on NHIA and exclude cases from the Alaska Native Registry.

- Statistic could not be calculated.

A percent of 0.00 represents a value that is below 0.005.

Table 9.14  
Hodgkin Lymphoma

Risk of Being Diagnosed With Cancer in 10, 20 and 30 Years,  
Lifetime Risk of Being Diagnosed with Cancer Given Alive and Cancer-Free at Current Age, and  
Lifetime Risk of Dying from Cancer Given Alive at Current Age  
Females, 2010-2012 By Race/Ethnicity

Race/ Ethnicity	Current Age	Risk of Being Diagnosed with Cancer				Risk of Dying from Cancer	Race/ Ethnicity	Current Age	Risk of Being Diagnosed with Cancer				Risk of Dying from Cancer
		+10 yrs	+20 yrs	+30 yrs	Ever				+10 yrs	+20 yrs	+30 yrs	Ever	
All Races	0	0.00	0.02	0.06	0.20	0.03	Asian/ Pacific Islander	0	0.00	0.01	0.04	0.11	0.02
	10	0.02	0.06	0.09	0.20	0.03		10	0.01	0.04	0.05	0.11	0.02
	20	0.04	0.07	0.09	0.18	0.03		20	0.03	0.04	0.05	0.09	0.02
	30	0.03	0.05	0.07	0.14	0.03		30	0.01	0.02	0.03	0.07	0.02
	40	0.02	0.04	0.06	0.11	0.03		40	0.01	0.01	0.02	0.05	0.02
	50	0.02	0.04	0.07	0.09	0.03		50	0.01	0.01	0.03	0.05	0.02
	60	0.02	0.05	0.07	0.08	0.03		60	0.01	0.02	0.04	0.04	0.02
	70	0.03	0.05	-	0.06	0.02		70	0.02	0.03	-	0.04	0.02
80	0.03	-	-	0.03	0.02	80	0.02	-	-	0.02	0.01		
White	0	0.00	0.02	0.07	0.21	0.03	American Indian/ Alaska Native <sup>a</sup>	0	0.00	0.00	0.01	0.10	0.01
	10	0.02	0.07	0.10	0.21	0.03		10	0.00	0.01	0.02	0.10	0.01
	20	0.04	0.07	0.09	0.19	0.03		20	0.01	0.02	0.02	0.09	0.01
	30	0.03	0.05	0.07	0.15	0.03		30	0.01	0.01	0.04	0.09	0.01
	40	0.02	0.04	0.06	0.12	0.03		40	0.00	0.03	0.03	0.08	0.01
	50	0.02	0.04	0.07	0.10	0.03		50	0.03	0.03	0.05	0.08	0.01
	60	0.02	0.06	0.08	0.08	0.03		60	0.01	0.03	0.05	0.05	0.01
	70	0.03	0.06	-	0.06	0.02		70	0.02	0.05	-	0.05	0.01
80	0.03	-	-	0.04	0.02	80	0.04	-	-	0.04	0.00		
Black	0	0.00	0.02	0.05	0.18	0.02	Hispanic <sup>b</sup>	0	0.00	0.02	0.05	0.18	0.04
	10	0.02	0.05	0.08	0.18	0.02		10	0.02	0.04	0.06	0.18	0.04
	20	0.04	0.07	0.09	0.16	0.02		20	0.03	0.04	0.06	0.17	0.04
	30	0.03	0.06	0.08	0.12	0.02		30	0.02	0.03	0.05	0.14	0.04
	40	0.02	0.05	0.07	0.09	0.02		40	0.02	0.03	0.06	0.12	0.04
	50	0.02	0.05	0.06	0.07	0.02		50	0.02	0.04	0.08	0.11	0.04
	60	0.03	0.04	0.05	0.05	0.01		60	0.03	0.06	0.09	0.09	0.04
	70	0.02	0.03	-	0.03	0.01		70	0.04	0.07	-	0.07	0.04
80	0.01	-	-	0.02	0.01	80	0.03	-	-	0.04	0.03		

Devcan 6.8.0, August 2014, National Cancer Institute (<http://surveillance.cancer.gov/devcan/>).

Source: Incidence data are from the SEER 18 areas (San Francisco, Connecticut, Detroit, Hawaii, Iowa, New Mexico, Seattle, Utah, Atlanta, San Jose-Monterey, Los Angeles, Alaska Native Registry, Rural Georgia, California excluding SF/SJM/LA, Kentucky, Louisiana, New Jersey, and Georgia excluding ATL/RG). Mortality data are from the NCHS public use data file for the total US.

<sup>a</sup> Underlying incidence and mortality data for American Indian/Alaska Native are based on the CHSDA (Contract Health Service Delivery Area) counties.

<sup>b</sup> Hispanic is not mutually exclusive from whites, blacks, Asian/Pacific Islanders, and American Indians/Alaska Natives. Underlying incidence data for Hispanics are based on NHIA and exclude cases from the Alaska Native Registry.

- Statistic could not be calculated.

A percent of 0.00 represents a value that is below 0.005.

Table 9.15  
Hodgkin Lymphoma

SEER Incidence and U.S. Mortality  
Age-Adjusted Rates and Trends<sup>a</sup>  
By Race/Ethnicity and Sex

SEER Incidence	SEER 18 Areas <sup>b</sup>			SEER 13 Areas <sup>b</sup>			SEER 9 Areas <sup>b</sup>		
	Rate 2008-2012			Trend 2003-2012 <sup>c</sup>			Trend 2003-2012 <sup>d</sup>		
	Rate per 100,000 persons			AAPC (%)			AAPC (%)		
	Total	Males	Females	Total	Males	Females	Total	Males	Females
RACE/ETHNICITY									
All Races	2.7	3.0	2.4	-0.6	-0.9	0.0	-0.7	-0.3	0.3*
White	2.9	3.2	2.6	-0.9	0.0	-0.1	-0.8	0.1	0.2
White Hispanic <sup>e</sup>	2.4	2.7	2.1	0.1	-0.5	0.7	-	-	-
White Non-Hispanic <sup>e</sup>	3.1	3.5	2.8	-1.0	0.3	-0.1	-	-	-
Black	2.7	3.0	2.4	0.9*	1.0*	0.6	1.1*	0.5	1.9*
Asian/Pacific Islander	1.3	1.5	1.2	-0.1	1.4	2.6*	-	-	-
Amer Ind/Alaska Nat <sup>f</sup>	1.1	1.1	1.0	-	-	-	-	-	-
Hispanic <sup>e</sup>	2.3	2.6	2.0	0.0	-0.6	0.6	-	-	-
U.S. Mortality <sup>g</sup>									
	Rate 2008-2012			Trend 2003-2012 <sup>h</sup>					
	Rate per 100,000 persons			AAPC (%)					
	Total	Males	Females	Total	Males	Females			
RACE/ETHNICITY									
All Races	0.4	0.5	0.3	-2.7*	-2.3*	-2.8*			
White	0.4	0.5	0.3	-2.6*	-2.2*	-2.7*			
White Hispanic <sup>e</sup>	0.4	0.6	0.3	-2.3*	-2.4*	-2.2*			
White Non-Hispanic <sup>e</sup>	0.4	0.5	0.3	-2.6*	-2.6*	-2.7*			
Black	0.3	0.4	0.3	-2.8*	-3.2*	-2.5*			
Asian/Pacific Islander	0.1	0.2	0.1	-1.9	-2.7	-			
Amer Ind/Alaska Nat									
Total U.S.	0.1	-	-	-2.9	-	-			
CHSDA Counties	-	-	-	-1.1	-	-			
Non-CHSDA Counties	-	-	-	-	-	-			
Hispanic <sup>e</sup>	0.4	0.5	0.3	-2.5*	-2.5*	-2.4*			

The AAPC is the Average Annual Percent Change over the time interval. The AAPCs are calculated by the Joinpoint Regression Program Version 4.2.0, April 2015, National Cancer Institute.

- Statistic not shown. Rate based on less than 16 cases for the time interval.

Trend based on less than 10 cases for at least one year within the time interval.

<sup>a</sup> Rates are age-adjusted to the 2000 US Std Population (19 age groups - Census P25-1130). Trends are based on rates age-adjusted to the 2000 US Std Population (19 age groups - Census P25-1130).

<sup>b</sup> The SEER 9 areas are San Francisco, Connecticut, Detroit, Hawaii, Iowa, New Mexico, Seattle, Utah, and Atlanta.

The SEER 13 areas comprise the SEER 9 areas plus San Jose-Monterey, Los Angeles, the Alaska Native Registry, and Rural Georgia.

The SEER 18 areas comprise the SEER 13 areas plus California excluding SF/SJM/LA, Kentucky, Louisiana, New Jersey, and Georgia excluding ATL/RG.

<sup>c</sup> The 2003-2012 AAPC estimates are based on a Joinpoint analysis with up to 3 Joinpoints over diagnosis years 1992-2012.

<sup>d</sup> The 2003-2012 AAPC estimates are based on a Joinpoint analysis with up to 5 Joinpoints over diagnosis years 1975-2012.

<sup>e</sup> Hispanic and Non-Hispanic are not mutually exclusive from whites, blacks, Asian/Pacific Islanders, and American Indians/Alaska Natives. Incidence data for Hispanics and Non-Hispanics are based on NHIA and exclude cases from the Alaska Native Registry. The 2003-2012 Hispanic and Non-Hispanic mortality trends exclude deaths from New Hampshire and Oklahoma.

<sup>f</sup> Incidence data for American Indian/Alaska Native are based on the CHSDA (Contract Health Service Delivery Area) counties.

<sup>g</sup> US Mortality Files, National Center for Health Statistics, CDC.

<sup>h</sup> The 2003-2012 mortality AAPCs are based on a Joinpoint analysis using years of death 1992-2012.

\* The APC is significantly different from zero (p<.05).

Table 9.16  
Hodgkin Lymphoma

Age-Adjusted SEER Incidence Rates<sup>a</sup>  
By Registry, Race and Sex

	All Races			Whites			Blacks		
	Total	Males	Females	Total	Males	Females	Total	Males	Females
<u>SEER Incidence Rates<sup>a</sup>, 2008-2012</u>									
California	2.43	2.75	2.15	2.63	2.95	2.34	2.75	3.14	2.37
Greater Bay Area	2.52	2.78	2.31	2.89	3.16	2.67	3.36	3.93	2.83
San Francisco-Oakland	2.61	2.92	2.35	2.97	3.34	2.65	3.48	3.96	3.08
San Jose-Monterey	2.36	2.53	2.26	2.74	2.84	2.71	-	-	-
Los Angeles	2.37	2.73	2.05	2.59	3.00	2.24	2.72	2.99	2.48
Greater California	2.43	2.76	2.13	2.58	2.89	2.29	2.53	2.92	2.11
Connecticut	3.39	3.71	3.08	3.59	3.89	3.29	2.70	3.10	2.28
Detroit	3.16	3.68	2.70	3.39	3.91	2.94	2.74	3.26	2.28
Georgia	2.53	2.73	2.37	2.59	2.75	2.46	2.59	2.86	2.37
Atlanta	2.55	2.94	2.22	2.68	2.96	2.45	2.58	3.13	2.15
Rural Georgia	-	-	-	-	-	-	-	-	-
Greater Georgia	2.51	2.62	2.42	2.55	2.67	2.45	2.56	2.63	2.51
Hawaii	1.83	1.94	1.72	3.04	3.34	2.65	-	-	-
Iowa	3.04	3.46	2.62	3.08	3.50	2.68	-	-	-
Kentucky	2.71	2.89	2.54	2.73	2.93	2.54	2.50	2.06	2.89
Louisiana	2.83	3.16	2.53	2.91	3.24	2.61	2.50	2.82	2.22
New Jersey	3.35	3.71	3.04	3.64	3.95	3.38	2.80	3.40	2.30
New Mexico	2.27	2.57	2.01	2.37	2.64	2.14	-	-	-
Seattle-Puget Sound	2.90	3.41	2.43	3.05	3.59	2.53	3.65	3.62	3.71
Utah	2.69	3.02	2.38	2.76	3.07	2.46	-	-	-
9 SEER Areas <sup>b</sup>	2.82	3.20	2.48	3.05	3.43	2.69	2.79	3.24	2.38
11 SEER Areas <sup>b</sup>	2.68	3.04	2.36	2.91	3.28	2.58	2.77	3.21	2.38
13 SEER Areas <sup>b</sup>	2.67	3.03	2.36	2.91	3.27	2.58	2.77	3.20	2.39
18 SEER Areas <sup>b</sup>	2.68	3.00	2.40	2.86	3.18	2.58	2.67	3.01	2.36

<sup>a</sup> Rates are per 100,000 and are age-adjusted to the 2000 US Std Population (19 age groups - Census P25-1130)

<sup>b</sup> The SEER 9 areas are San Francisco, Connecticut, Detroit, Hawaii, Iowa, New Mexico, Seattle, Utah and Atlanta.

The SEER 11 areas comprise the SEER 9 areas plus San Jose-Monterey and Los Angeles.

The SEER 13 areas comprise the SEER 11 areas plus the Alaska Native Registry and Rural Georgia.

The SEER 18 areas comprise the SEER 13 areas plus California excluding SF/SJM/LA, Kentucky, Louisiana, New Jersey and Georgia excluding ATL/RG.

- Statistic not shown. Rate based on less than 16 cases for the time interval.



Table 9.17  
Hodgkin Lymphoma

Age-Adjusted SEER Death Rates<sup>a</sup>  
By Registry, Race and Sex

	All Races			Whites			Blacks		
	Total	Males	Females	Total	Males	Females	Total	Males	Females
<u>SEER Death Rates<sup>a</sup>, 2008-2012</u>									
California	0.39	0.49	0.30	0.43	0.53	0.34	0.34	0.46	0.23
Greater Bay Area	0.34	0.45	0.27	0.41	0.50	0.36	-	-	-
San Francisco-Oakland	0.33	0.48	0.22	0.40	0.53	0.30	-	-	-
San Jose-Monterey	0.37	0.40	0.37	0.44	0.44	0.47	-	-	-
Los Angeles	0.42	0.57	0.31	0.48	0.63	0.37	0.32	-	-
Greater California	0.38	0.47	0.30	0.41	0.51	0.32	0.35	-	-
Connecticut	0.37	0.38	0.34	0.36	0.37	0.35	-	-	-
Detroit	0.40	0.51	0.31	0.45	0.55	0.36	-	-	-
Georgia	0.35	0.48	0.27	0.36	0.45	0.33	0.34	0.49	-
Atlanta	0.29	0.49	-	0.33	0.52	-	0.24	-	-
Rural Georgia	-	-	-	-	-	-	-	-	-
Greater Georgia	0.37	0.46	0.33	0.37	0.43	0.38	0.35	0.51	-
Hawaii	0.19	-	-	-	-	-	-	-	-
Iowa	0.33	0.41	0.27	0.32	0.41	0.26	-	-	-
Kentucky	0.31	0.34	0.29	0.31	0.34	0.28	-	-	-
Louisiana	0.50	0.62	0.41	0.54	0.66	0.44	0.40	0.53	-
New Jersey	0.34	0.42	0.28	0.37	0.46	0.28	0.34	-	-
New Mexico	0.37	0.52	-	0.40	0.55	-	-	-	-
Seattle-Puget Sound	0.27	0.38	0.19	0.29	0.41	0.20	-	-	-
Utah	0.25	0.30	-	0.25	-	-	-	-	-
9 SEER Areas <sup>b</sup>	0.32	0.43	0.24	0.35	0.44	0.27	0.33	0.51	0.18
11 SEER Areas <sup>b</sup>	0.35	0.46	0.26	0.38	0.48	0.30	0.32	0.49	0.19
13 SEER Areas <sup>b</sup>	0.35	0.45	0.27	0.38	0.48	0.30	0.34	0.49	0.21
18 SEER Areas <sup>b</sup>	0.36	0.45	0.29	0.39	0.48	0.32	0.35	0.46	0.25
Total U.S.	0.37	0.46	0.29	0.38	0.48	0.31	0.34	0.43	0.27

<sup>a</sup> US Mortality Files, National Center for Health Statistics, Centers for Disease Control and Prevention. Rates are per 100,000 and are age-adjusted to the 2000 US Std Population (19 age groups - Census P25-1130).

<sup>b</sup> The SEER 9 areas are San Francisco, Connecticut, Detroit, Hawaii, Iowa, New Mexico, Seattle, Utah and Atlanta. The SEER 11 areas comprise the SEER 9 areas plus San Jose-Monterey and Los Angeles.

The SEER 13 areas comprise the SEER 11 areas plus the Alaska Native Registry and Rural Georgia.

The SEER 18 areas comprise the SEER 13 areas plus California excluding SF/SJM/LA, Kentucky, Louisiana, New Jersey and Georgia excluding ATL/RG.

- Statistic not shown. Rate based on less than 16 cases for the time interval.

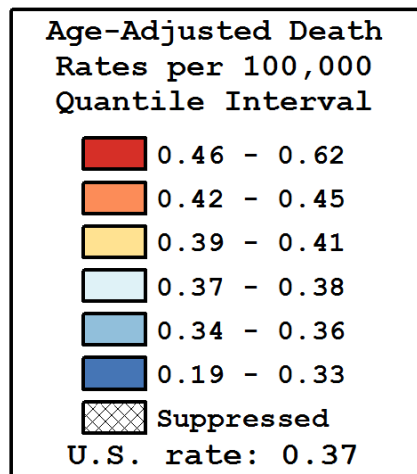
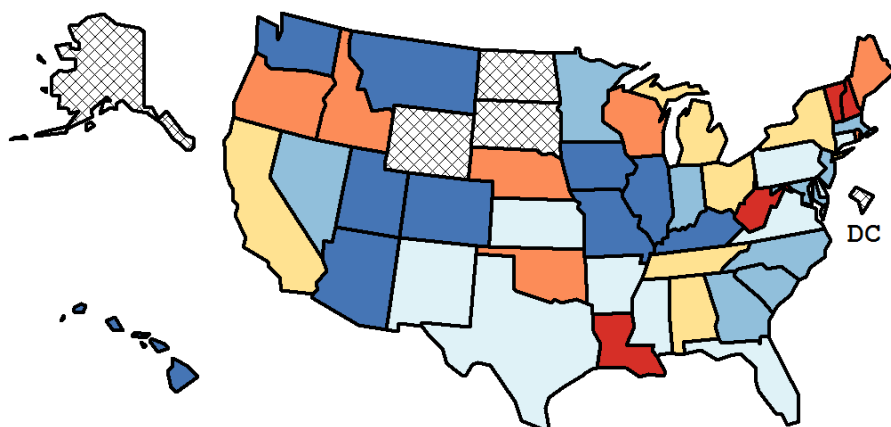
Table 9.18  
Hodgkin Lymphoma

Age-Adjusted Cancer Death<sup>a</sup> Rates By State, All Races, 2008-2012

Males and Females

State	Rate	SE	Rank(CI) <sup>d</sup>	PD
TOTAL U.S.	0.37	0.00		
High Five States				
Vermont	0.62	0.14	01(01,44)	66.76 <sup>c</sup>
Louisiana	0.50	0.05	02(01,25)	36.71 <sup>c</sup>
New Hampshire	0.48	0.09	03(01,44)	30.55 <sup>c</sup>
West Virginia	0.46	0.07	04(01,43)	25.65 <sup>c</sup>
Nebraska	0.45	0.07	05(01,44)	22.42 <sup>c</sup>
Low Five States				
Colorado	0.31	0.04	42(10,46)	-15.26 <sup>c</sup>
Kentucky	0.31	0.04	43(08,46)	-15.27 <sup>c</sup>
Arizona	0.27	0.03	44(27,46)	-26.46 <sup>c</sup>
Utah	0.25	0.05	45(12,46)	-32.46 <sup>c</sup>
Hawaii	0.19	0.05	46(26,46)	-47.20 <sup>c</sup>

State	Rate	SE	Rank(CI) <sup>d</sup>	PD	State	Rate	SE	Rank(CI) <sup>d</sup>	PD
Alabama	0.41	0.04	13(02,42)	11.54	Montana	0.33	0.08	40(01,46)	-11.53
Alaska	-	-	-(-,-)	-	Nebraska	0.45	0.07	05(01,44)	22.42 <sup>c</sup>
Arizona	0.27	0.03	44(27,46)	-26.46 <sup>c</sup>	Nevada	0.36	0.05	28(02,46)	-1.86
Arkansas	0.38	0.05	22(02,45)	2.63	New Hampshire	0.48	0.09	03(01,44)	30.55 <sup>c</sup>
California	0.39	0.01	17(08,34)	4.42	New Jersey	0.34	0.03	34(10,44)	-7.17
Colorado	0.31	0.04	42(10,46)	-15.26 <sup>c</sup>	New Mexico	0.37	0.06	25(01,46)	0.23
Connecticut	0.37	0.04	27(03,45)	-0.38	New York	0.39	0.02	15(05,35)	6.97
Delaware	0.38	0.09	21(01,46)	3.01	North Carolina	0.35	0.03	31(07,44)	-3.87
D.C.	-	-	-(-,-)	-	North Dakota	-	-	-(-,-)	-
Florida	0.37	0.02	26(08,39)	0.19	Ohio	0.39	0.03	16(05,39)	4.65
Georgia	0.35	0.03	33(07,44)	-4.99	Oklahoma	0.44	0.05	08(01,40)	17.99 <sup>c</sup>
Hawaii	0.19	0.05	46(26,46)	-47.20 <sup>c</sup>	Oregon	0.42	0.04	10(01,42)	13.92
Idaho	0.44	0.08	07(01,45)	19.29 <sup>c</sup>	Pennsylvania	0.38	0.02	20(06,39)	3.54
Illinois	0.33	0.02	39(14,44)	-10.61	Rhode Island	0.43	0.09	09(01,46)	15.98 <sup>c</sup>
Indiana	0.36	0.03	29(05,44)	-3.25	South Carolina	0.36	0.04	30(04,45)	-3.49
Iowa	0.33	0.04	38(04,46)	-10.31	South Dakota	-	-	-(-,-)	-
Kansas	0.38	0.05	19(02,45)	4.05	Tennessee	0.41	0.04	12(02,40)	11.66
Kentucky	0.31	0.04	43(08,46)	-15.27 <sup>c</sup>	Texas	0.37	0.02	24(08,38)	1.03
Louisiana	0.50	0.05	02(01,25)	36.71 <sup>c</sup>	Utah	0.25	0.05	45(12,46)	-32.46 <sup>c</sup>
Maine	0.45	0.08	06(01,45)	21.04 <sup>c</sup>	Vermont	0.62	0.14	01(01,44)	66.76 <sup>c</sup>
Maryland	0.34	0.03	36(07,45)	-8.67	Virginia	0.38	0.03	23(05,43)	1.74
Massachusetts	0.35	0.03	32(06,44)	-4.35	Washington	0.32	0.03	41(12,45)	-13.68
Michigan	0.41	0.03	14(03,37)	11.24	West Virginia	0.46	0.07	04(01,43)	25.65 <sup>c</sup>
Minnesota	0.34	0.04	35(06,45)	-7.25	Wisconsin	0.42	0.04	11(02,39)	13.56
Mississippi	0.38	0.05	18(02,45)	4.34	Wyoming	-	-	-(-,-)	-
Missouri	0.33	0.03	37(08,45)	-9.57					



<sup>a</sup> US Mortality Files, National Center for Health Statistics, Centers for Disease Control and Prevention. Rates are per 100,000 and are age-adjusted to the 2000 US Std Population (19 age groups - Census P25-1130).

<sup>b</sup> Difference between state rate and total U.S. rate is statistically significant ( $p < .0002$ ).

<sup>c</sup> Absolute percent difference between state rate and total U.S. rate is 15% or more.

<sup>d</sup> Rank of state level death rate and the 95% confidence intervals (low, high) for the rank.

SE Standard error of the rate.

PD Percent difference between state rate and total U.S. rate.

- Statistic not shown. Rate based on less than 16 cases for the time interval.

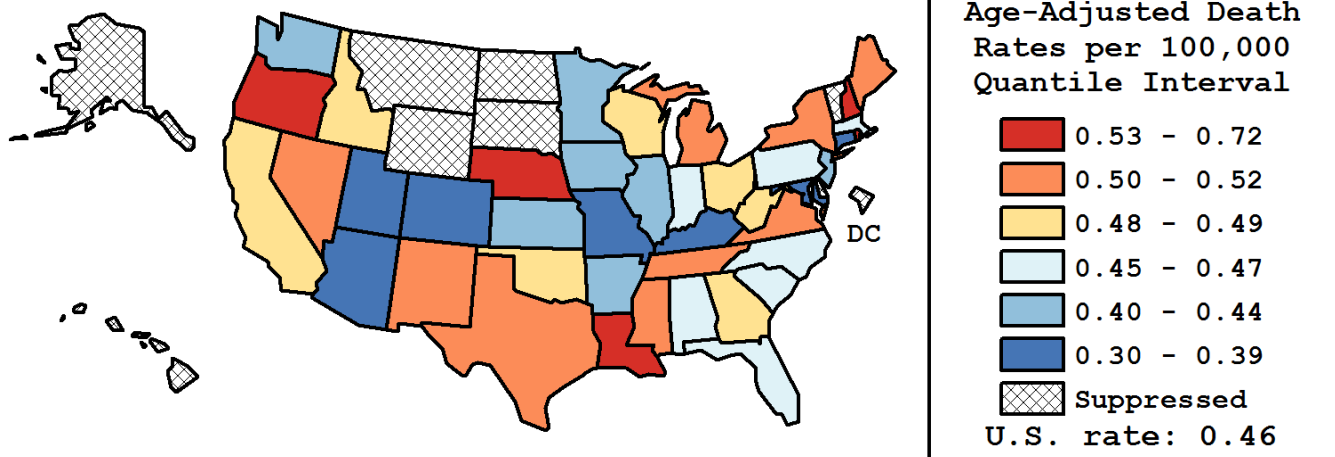
Table 9.19  
Hodgkin Lymphoma

Age-Adjusted Cancer Death<sup>a</sup> Rates By State, All Races, 2008-2012

Males

State	Rate	SE	Rank(CI) <sup>d</sup>	PD
TOTAL U.S.	0.46	0.01		
High Five States				
Rhode Island	0.72	0.17	01(01,41)	56.20 <sup>c</sup>
New Hampshire	0.68	0.16	02(01,41)	48.19 <sup>c</sup>
Nebraska	0.67	0.12	03(01,39)	45.54 <sup>c</sup>
Louisiana	0.62	0.08	04(01,32)	35.19 <sup>c</sup>
Oregon	0.57	0.08	05(01,37)	24.20 <sup>c</sup>
Low Five States				
Maryland	0.38	0.05	38(07,42)	-17.55 <sup>c</sup>
Colorado	0.34	0.06	39(11,42)	-27.02 <sup>c</sup>
Kentucky	0.34	0.06	40(13,42)	-27.31 <sup>c</sup>
Arizona	0.31 <sup>b</sup>	0.04	41(26,42)	-33.70 <sup>c</sup>
Utah	0.30	0.08	42(08,42)	-34.27 <sup>c</sup>

State	Rate	SE	Rank(CI) <sup>d</sup>	PD	State	Rate	SE	Rank(CI) <sup>d</sup>	PD
Alabama	0.45	0.06	26(03,42)	-1.60	Montana	-	-	-(-,-)	-
Alaska	-	-	-(-,-)	-	Nebraska	0.67	0.12	03(01,39)	45.54 <sup>c</sup>
Arizona	0.31 <sup>b</sup>	0.04	41(26,42)	-33.70 <sup>c</sup>	Nevada	0.52	0.10	07(01,42)	12.30
Arkansas	0.42	0.08	32(03,42)	-9.21	New Hampshire	0.68	0.16	02(01,41)	48.19 <sup>c</sup>
California	0.49	0.02	16(05,31)	6.55	New Jersey	0.42	0.05	31(06,41)	-9.07
Colorado	0.34	0.06	39(11,42)	-27.02 <sup>c</sup>	New Mexico	0.52	0.10	08(01,42)	11.84
Connecticut	0.38	0.07	37(05,42)	-16.51 <sup>c</sup>	New York	0.50	0.03	14(04,33)	8.67
Delaware	-	-	-(-,-)	-	North Carolina	0.45	0.05	27(05,40)	-2.67
D.C.	-	-	-(-,-)	-	North Dakota	-	-	-(-,-)	-
Florida	0.46	0.03	24(07,37)	0.00	Ohio	0.48	0.04	20(04,38)	3.90
Georgia	0.48	0.05	21(03,39)	3.08	Oklahoma	0.49	0.08	17(01,41)	6.54
Hawaii	-	-	-(-,-)	-	Oregon	0.57	0.08	05(01,37)	24.20 <sup>c</sup>
Idaho	0.49	0.11	18(01,42)	6.31	Pennsylvania	0.45	0.04	28(06,39)	-3.08
Illinois	0.42	0.04	33(09,41)	-9.39	Rhode Island	0.72	0.17	01(01,41)	56.20 <sup>c</sup>
Indiana	0.47	0.06	22(03,40)	2.56	South Carolina	0.46	0.07	25(02,41)	-0.08
Iowa	0.41	0.07	34(03,42)	-10.24	South Dakota	-	-	-(-,-)	-
Kansas	0.44	0.08	29(02,42)	-3.63	Tennessee	0.51	0.06	10(02,38)	11.21
Kentucky	0.34	0.06	40(13,42)	-27.31 <sup>c</sup>	Texas	0.51	0.03	12(03,31)	10.02
Louisiana	0.62	0.08	04(01,32)	35.19 <sup>c</sup>	Utah	0.30	0.08	42(08,42)	-34.27 <sup>c</sup>
Maine	0.52	0.13	06(01,42)	12.57	Vermont	-	-	-(-,-)	-
Maryland	0.38	0.05	38(07,42)	-17.55 <sup>c</sup>	Virginia	0.52	0.05	09(02,37)	11.81
Massachusetts	0.46	0.05	23(03,40)	0.53	Washington	0.40	0.05	35(06,42)	-12.31
Michigan	0.51	0.05	13(02,37)	9.72	West Virginia	0.49	0.10	19(01,42)	5.37
Minnesota	0.43	0.06	30(04,42)	-7.40	Wisconsin	0.49	0.06	15(02,39)	7.30
Mississippi	0.51	0.09	11(01,42)	10.80	Wyoming	-	-	-(-,-)	-
Missouri	0.39	0.05	36(07,42)	-16.35 <sup>c</sup>					



<sup>a</sup> US Mortality Files, National Center for Health Statistics, Centers for Disease Control and Prevention. Rates are per 100,000 and are age-adjusted to the 2000 US Std Population (19 age groups - Census P25-1130).

<sup>b</sup> Difference between state rate and total U.S. rate is statistically significant ( $p < .0002$ ).

<sup>c</sup> Absolute percent difference between state rate and total U.S. rate is 15% or more.

<sup>d</sup> Rank of state level death rate and the 95% confidence intervals (low, high) for the rank.

SE Standard error of the rate.

PD Percent difference between state rate and total U.S. rate.

- Statistic not shown. Rate based on less than 16 cases for the time interval.

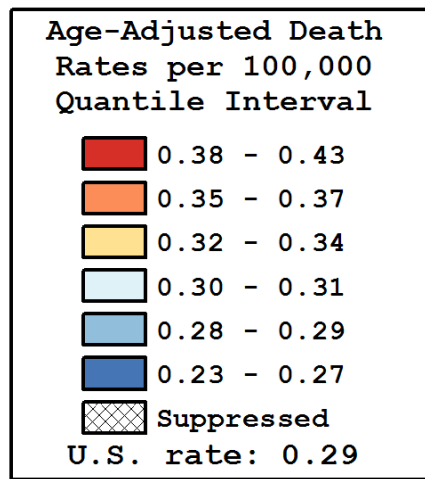
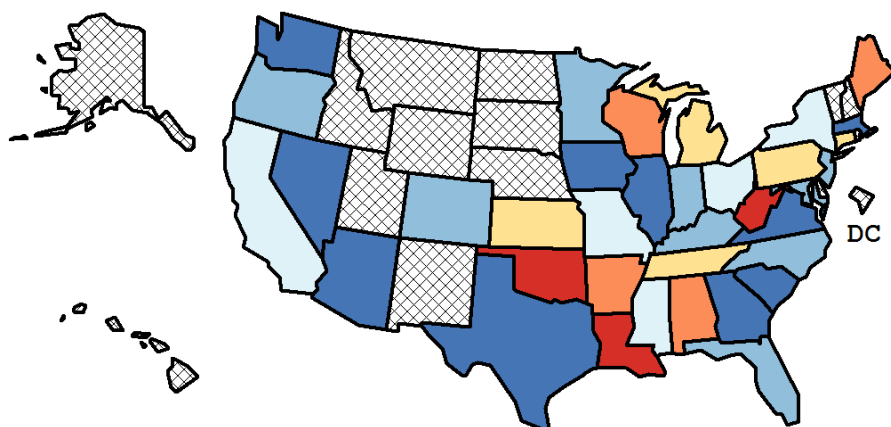
Table 9.20  
Hodgkin Lymphoma

Age-Adjusted Cancer Death<sup>a</sup> Rates By State, All Races, 2008-2012

Females

State	Rate	SE	Rank(CI) <sup>d</sup>	PD
TOTAL U.S.	0.29	0.01		
High Five States				
West Virginia	0.43	0.09	01(01,35)	48.30 <sup>c</sup>
Louisiana	0.41	0.06	02(01,29)	40.53 <sup>c</sup>
Oklahoma	0.41	0.06	03(01,32)	39.24 <sup>c</sup>
Alabama	0.37	0.05	04(01,33)	27.53 <sup>c</sup>
Maine	0.37	0.10	05(01,36)	25.00 <sup>c</sup>
Low Five States				
Texas	0.26	0.02	32(11,36)	-10.52
Illinois	0.26	0.03	33(09,36)	-11.89
Washington	0.25	0.04	34(07,36)	-15.89 <sup>c</sup>
Arizona	0.24	0.04	35(07,36)	-18.33 <sup>c</sup>
Nevada	0.23	0.06	36(03,36)	-20.90 <sup>c</sup>

State	Rate	SE	Rank(CI) <sup>d</sup>	PD	State	Rate	SE	Rank(CI) <sup>d</sup>	PD
Alabama	0.37	0.05	04(01,33)	27.53 <sup>c</sup>	Montana	-	-	-(-,-)	-
Alaska	-	-	-(-,-)	-	Nebraska	-	-	-(-,-)	-
Arizona	0.24	0.04	35(07,36)	-18.33 <sup>c</sup>	Nevada	0.23	0.06	36(03,36)	-20.90 <sup>c</sup>
Arkansas	0.35	0.06	06(01,36)	20.02 <sup>c</sup>	New Hampshire	-	-	-(-,-)	-
California	0.30	0.02	16(07,31)	2.27	New Jersey	0.28	0.03	23(05,36)	-5.03
Colorado	0.29	0.05	19(02,36)	-0.28	New Mexico	-	-	-(-,-)	-
Connecticut	0.34	0.06	08(01,36)	17.49 <sup>c</sup>	New York	0.31	0.02	14(04,32)	5.58
Delaware	-	-	-(-,-)	-	North Carolina	0.28	0.03	24(05,36)	-5.45
D.C.	-	-	-(-,-)	-	North Dakota	-	-	-(-,-)	-
Florida	0.29	0.02	22(07,34)	-1.89	Ohio	0.31	0.03	13(03,34)	5.59
Georgia	0.27	0.03	27(05,36)	-6.33	Oklahoma	0.41	0.06	03(01,32)	39.24 <sup>c</sup>
Hawaii	-	-	-(-,-)	-	Oregon	0.29	0.05	21(02,36)	-1.86
Idaho	-	-	-(-,-)	-	Pennsylvania	0.33	0.03	10(02,29)	13.91
Illinois	0.26	0.03	33(09,36)	-11.89	Rhode Island	-	-	-(-,-)	-
Indiana	0.28	0.04	25(04,36)	-5.68	South Carolina	0.27	0.05	29(03,36)	-8.40
Iowa	0.27	0.05	28(02,36)	-7.60	South Dakota	-	-	-(-,-)	-
Kansas	0.34	0.07	09(01,36)	15.74 <sup>c</sup>	Tennessee	0.32	0.04	12(01,35)	9.92
Kentucky	0.29	0.05	20(02,36)	-1.64	Texas	0.26	0.02	32(11,36)	-10.52
Louisiana	0.41	0.06	02(01,29)	40.53 <sup>c</sup>	Utah	-	-	-(-,-)	-
Maine	0.37	0.10	05(01,36)	25.00 <sup>c</sup>	Vermont	-	-	-(-,-)	-
Maryland	0.29	0.04	18(02,36)	0.22	Virginia	0.27	0.03	31(05,36)	-9.57
Massachusetts	0.27	0.04	30(05,36)	-8.54	Washington	0.25	0.04	34(07,36)	-15.89 <sup>c</sup>
Michigan	0.33	0.03	11(02,32)	12.43	West Virginia	0.43	0.09	01(01,35)	48.30 <sup>c</sup>
Minnesota	0.28	0.04	26(03,36)	-6.06	Wisconsin	0.35	0.05	07(01,34)	17.74 <sup>c</sup>
Mississippi	0.30	0.06	15(01,36)	2.52	Wyoming	-	-	-(-,-)	-
Missouri	0.30	0.04	17(02,36)	0.99					



<sup>a</sup> US Mortality Files, National Center for Health Statistics, Centers for Disease Control and Prevention. Rates are per 100,000 and are age-adjusted to the 2000 US Std Population (19 age groups - Census P25-1130).

<sup>b</sup> Difference between state rate and total U.S. rate is statistically significant ( $p < .0002$ ).

<sup>c</sup> Absolute percent difference between state rate and total U.S. rate is 15% or more.

<sup>d</sup> Rank of state level death rate and the 95% confidence intervals (low, high) for the rank.

SE Standard error of the rate.

PD Percent difference between state rate and total U.S. rate.

- Statistic not shown. Rate based on less than 16 cases for the time interval.

Table 9.21  
Hodgkin LymphomaEstimated United States Cancer Prevalence Counts<sup>a</sup> on January 1, 2012  
By Race/Ethnicity, Sex and Years Since Diagnosis

Years Since Diagnosis		0 to <5	5 to <10	10 to <15	15 to <20	20 to <25	25 to <30	0 to <20 <sup>e</sup>	0 to <37 <sup>e</sup>	>=37 <sup>g</sup>	Complete <sup>h</sup>
<u>Race</u>	<u>Sex</u>										
All Races <sup>b</sup>	Both Sexes	38,167	33,462	28,363	24,965	21,696	16,536	134,051	176,990	12,636	189,626
	Males	20,781	17,382	14,349	12,735	10,761	8,636	70,014	91,797	6,285	98,082
	Females	17,386	16,080	14,014	12,230	10,935	7,900	64,037	85,193	6,351	91,544
White <sup>b</sup>	Both Sexes	31,580	28,310	24,730	22,151	19,990	15,371	115,070	155,246	13,975	169,221
	Males	17,279	14,894	12,469	11,314	9,961	7,826	60,338	80,396	7,224	87,620
	Females	14,301	13,416	12,261	10,837	10,029	7,545	54,732	74,850	6,751	81,601
Black <sup>b</sup>	Both Sexes	4,902	3,930	2,839	2,320	1,338	954	14,649	16,783	1,005	17,788
	Males	2,648	1,806	1,440	1,197	612	702	7,405	8,790	708	9,498
	Females	2,254	2,124	1,399	1,123	726	252	7,244	7,993	297	8,290
Asian/ Pacific Islander <sup>c</sup>	Both Sexes	1,010	798	490	+	+	+	2,590	+	+	+
	Males	515	404	266	+	+	+	1,300	+	+	+
	Females	495	394	224	+	+	+	1,290	+	+	+
Hispanic <sup>d</sup>	Both Sexes	4,206	3,162	2,559	+	+	+	11,603	+	+	+
	Males	2,220	1,767	1,415	+	+	+	6,319	+	+	+
	Females	1,986	1,395	1,144	+	+	+	5,284	+	+	+

Estimated prevalence percent<sup>a</sup> on January 1, 2012, of the SEER<sup>c</sup> population diagnosed in the previous 20 years  
By Age at Prevalence, Race/Ethnicity and Sex

Age at Prevalence		Age Specific (Crude)									Age-Adjusted <sup>f</sup>	
		All Ages	0-9	10-19	20-29	30-39	40-49	50-59	60-69	70-79	80+	All Ages
<u>Race</u>	<u>Sex</u>											
All Races <sup>c</sup>	Both Sexes	0.0365%	0.0007%	0.0103%	0.0396%	0.0643%	0.0624%	0.0440%	0.0346%	0.0326%	0.0255%	0.0364%
	Males	0.0387%	0.0011%	0.0115%	0.0390%	0.0624%	0.0661%	0.0506%	0.0421%	0.0391%	0.0294%	0.0386%
	Females	0.0343%	0.0003%	0.0091%	0.0403%	0.0663%	0.0587%	0.0376%	0.0279%	0.0273%	0.0232%	0.0344%
White <sup>c</sup>	Both Sexes	0.0413%	0.0007%	0.0112%	0.0446%	0.0747%	0.0708%	0.0495%	0.0388%	0.0369%	0.0288%	0.0414%
	Males	0.0437%	0.0010%	0.0125%	0.0431%	0.0718%	0.0744%	0.0560%	0.0473%	0.0436%	0.0332%	0.0434%
	Females	0.0390%	0.0004%	0.0098%	0.0462%	0.0779%	0.0671%	0.0431%	0.0308%	0.0314%	0.0262%	0.0395%
Black <sup>c</sup>	Both Sexes	0.0330%	0.0007%	0.0100%	0.0309%	0.0598%	0.0630%	0.0437%	0.0337%	0.0297%	0.0176%	0.0341%
	Males	0.0347%	0.0013%	0.0100%	0.0312%	0.0581%	0.0664%	0.0559%	0.0349%	0.0415%	0.0215%	0.0366%
	Females	0.0315%	-	0.0101%	0.0306%	0.0613%	0.0600%	0.0332%	0.0327%	0.0214%	0.0157%	0.0319%
Asian/ Pacific Islander <sup>c</sup>	Both Sexes	0.0143%	0.0010%	0.0050%	0.0231%	0.0233%	0.0205%	0.0132%	0.0108%	0.0105%	0.0075%	0.0137%
	Males	0.0150%	0.0014%	0.0067%	0.0254%	0.0226%	0.0203%	0.0126%	0.0134%	0.0128%	0.0103%	0.0145%
	Females	0.0137%	-	0.0032%	0.0209%	0.0239%	0.0206%	0.0138%	0.0087%	0.0087%	0.0058%	0.0129%
Hispanic <sup>d</sup>	Both Sexes	0.0225%	0.0010%	0.0095%	0.0270%	0.0364%	0.0343%	0.0304%	0.0337%	0.0389%	0.0228%	0.0247%
	Males	0.0242%	0.0013%	0.0117%	0.0278%	0.0345%	0.0362%	0.0399%	0.0360%	0.0423%	0.0412%	0.0272%
	Females	0.0208%	0.0007%	0.0072%	0.0261%	0.0385%	0.0323%	0.0212%	0.0317%	0.0363%	0.0118%	0.0226%

<sup>a</sup> US 2012 cancer prevalence counts are based on 2012 cancer prevalence proportions from the SEER registries and 1/1/2012 US population estimates based on the average of 2011 and 2012 population estimates from the US Bureau of the Census. Prevalence was calculated using the First Malignant Primary Only for a person.

<sup>b c d</sup> Statistics based on (b) SEER 9 Areas (c) SEER 11 Areas and Rural Georgia (d) NHIA for Hispanic for SEER 11 Areas and Rural Georgia.

<sup>e</sup> Maximum limited-duration prevalence: 37 years for 1975-2012 SEER 9 data; 20 years for 1992-2012 SEER 11 data (used to calculate prevalence for Hispanics and Asian Pacific Islanders).

<sup>f</sup> Percentages are age-adjusted to the 2000 US Standard Population (19 age groups - Census P25-1130) by 5-year age groups.

<sup>g h i</sup> (g) Cases diagnosed more than 37 years ago were estimated using the completeness index method (Capocaccia et. al. 1997, Merrill et. al. 2000). (h) Complete prevalence is obtained by summing 0 to <37 and >=37. (i) Age-specific completeness index was approximated using empirical data from historical Connecticut tumor registry.

- Statistic not shown. Statistic based on fewer than 5 cases estimated alive in SEER for the time interval.

+ Not available.

Table 9.22  
All Lymphoid Neoplasms With Detailed Hodgkin Lymphoma Subtypes<sup>a</sup>

SEER<sup>b</sup> Incidence Rates and Annual Percent Change by Age at Diagnosis

All Races, Both Sexes, 2003-2012

Site	All Ages			Ages 0-19			Ages 20-64			Ages 65+		
	Rate	Count	APC	Rate	Count	APC	Rate	Count	APC	Rate	Count	APC
Lymphoid Neoplasm	35.8	299,007	-0.2	5.9	13,906	1.1*	23.6	127,216	-0.5*	160.3	157,885	-0.1
1 Hodgkin Lymphoma	2.7	23,122	-0.8	1.2	2,896	1.1	3.2	16,102	-0.9*	4.2	4,124	-1.5
1(a) Classical Hodgkin lymphoma	2.6	21,948	-1.1*	1.1	2,722	0.6	3.0	15,288	-1.2*	4.0	3,938	-1.8*
1(a)1. Lymphocyte-rich/mixed cellularity/ lymphocyte-depleted	0.5	3,785	-2.0*	0.1	308	3.4	0.5	2,408	-1.4*	1.1	1,069	-4.7*
1(a)1.1 Lymphocyte-rich	0.1	752	-0.2	0.0	66	-	0.1	504	0.3	0.2	182	-1.3
1(a)1.2 Mixed cellularity	0.3	2,733	-2.5*	0.1	225	4.2	0.3	1,743	-1.8*	0.8	765	-5.5*
1(a)1.3 Lymphocyte-depleted	0.0	300	-2.9	0.0	17	-	0.0	161	-1.7	0.1	122	-
1(a)2. Nodular sclerosis	1.5	12,899	-2.5*	0.8	2,040	-0.8	1.9	9,467	-2.9*	1.4	1,392	-2.7
1(a)3. Classical Hodgkin lymphoma, NOS <sup>c</sup>	0.6	5,264	3.3*	0.2	374	6.7*	0.7	3,413	3.9*	1.5	1,477	1.2
1(b) Nodular lymphocyte predominant Hodgkin Lymphoma	0.1	1,174	4.9*	0.1	174	8.6*	0.2	814	3.9*	0.2	186	-
2 Non-Hodgkin lymphoma	32.0	267,287	0.0	4.6	10,899	0.9*	19.9	108,203	-0.3*	150.6	148,185	0.1
3 Composite Hodgkin lymphoma and Non-Hodgkin lymphoma	0.0	188	16.6*	-	-	-	0.0	105	-	0.1	81	-
4 Lymphoid neoplasm, NOS <sup>c</sup>	1.0	8,410	-4.6*	0.0	109	-	0.5	2,806	-4.5*	5.5	5,495	-5.0*

<sup>a</sup> The APC is the Annual Percent Change over the time interval.

<sup>a</sup> Morton LM, Turner JJ, Cerhan JR, Linet MS, Treseler PA, Clarke CA, Jack A, Cozen W, Maynadié M, Spinelli JJ, Costantini AS, Rüdiger T, Scarpa A, Zheng T, Weisenburger DD. Proposed classification of lymphoid neoplasms for epidemiologic research from the Pathology Working Group of the International Lymphoma Epidemiology Consortium (InterLymph). *Blood*. 2007;110:695-708.

<sup>b</sup> SEER 18 areas (San Francisco, Connecticut, Detroit, Hawaii, Iowa, New Mexico, Seattle, Utah, Atlanta, San Jose-Monterey, Los Angeles, Alaska Native Registry, Rural Georgia, California excluding SF/SJM/LA, Kentucky, Louisiana, New Jersey and Georgia excluding ATL/RG).

<sup>c</sup> NOS = Not otherwise specified.

\* The APC is significantly different from zero (p<.05).

- Statistic not shown. Rate based on less than 16 cases for the time interval.

Trend based on less than 10 cases for at least one year within the time interval.

Table 9.23  
All Lymphoid Neoplasms With Detailed Hodgkin Lymphoma Subtypes<sup>a</sup>

SEER<sup>b</sup> Incidence Rates and Annual Percent Change by Age at Diagnosis

All Races, Males, 2003-2012

Site	All Ages			Ages 0-19			Ages 20-64			Ages 65+		
	Rate	Count	APC	Rate	Count	APC	Rate	Count	APC	Rate	Count	APC
Lymphoid Neoplasm	44.2	166,052	-0.1	6.7	8,096	0.6	28.1	74,420	-0.6*	204.0	83,536	0.1
1 Hodgkin Lymphoma	3.1	12,642	-0.9	1.3	1,565	0.8	3.5	8,911	-0.9	5.2	2,166	-1.6
1(a) Classical Hodgkin lymphoma	2.9	11,822	-1.2	1.2	1,426	0.1	3.3	8,345	-1.2	4.9	2,051	-1.8
1(a)1. Lymphocyte-rich/mixed cellularity/ lymphocyte-depleted	0.6	2,365	-2.2*	0.2	219	4.2	0.6	1,604	-1.5*	1.3	542	-5.4*
1(a)1.1 Lymphocyte-rich	0.1	442	-1.6	0.0	51	-	0.1	310	-1.3	0.2	81	-
1(a)1.2 Mixed cellularity	0.4	1,740	-1.9*	0.1	158	5.2	0.5	1,185	-1.5	0.9	397	-4.8*
1(a)1.3 Lymphocyte-depleted	0.0	183	-5.7	-	-	-	0.0	109	-	0.2	64	-
1(a)2. Nodular sclerosis	1.6	6,445	-2.7*	0.8	992	-1.7	1.9	4,720	-2.9*	1.7	733	-2.5
1(a)3. Classical Hodgkin lymphoma, NOS <sup>c</sup>	0.8	3,012	2.8*	0.2	215	4.6*	0.8	2,021	3.2*	1.9	776	1.2
1(b) Nodular lymphocyte predominant Hodgkin Lymphoma	0.2	820	4.4*	0.1	139	8.7*	0.2	566	3.8*	0.3	115	-
2 Non-Hodgkin lymphoma	39.9	148,929	0.0	5.4	6,463	0.3	23.9	63,776	-0.4*	192.1	78,690	0.3
3 Composite Hodgkin lymphoma and Non-Hodgkin lymphoma	0.0	101	-	-	-	-	0.0	63	-	0.1	37	-
4 Lymphoid neoplasm, NOS <sup>c</sup>	1.2	4,380	-4.5*	0.1	67	-	0.6	1,670	-5.4*	6.6	2,643	-4.5*

<sup>a</sup> The APC is the Annual Percent Change over the time interval.

<sup>a</sup> Morton LM, Turner JJ, Cerhan JR, Linet MS, Treseler PA, Clarke CA, Jack A, Cozen W, Maynadié M, Spinelli JJ, Costantini AS, Rüdiger T, Scarpa A, Zheng T, Weisenburger DD. Proposed classification of lymphoid neoplasms for epidemiologic research from the Pathology Working Group of the International Lymphoma Epidemiology Consortium (InterLymph). *Blood*. 2007;110:695-708.

<sup>b</sup> SEER 18 areas (San Francisco, Connecticut, Detroit, Hawaii, Iowa, New Mexico, Seattle, Utah, Atlanta, San Jose-Monterey, Los Angeles, Alaska Native Registry, Rural Georgia, California excluding SF/SJM/LA, Kentucky, Louisiana, New Jersey and Georgia excluding ATL/RG).

<sup>c</sup> NOS = Not otherwise specified.

\* The APC is significantly different from zero (p<.05).

- Statistic not shown. Rate based on less than 16 cases for the time interval.

Trend based on less than 10 cases for at least one year within the time interval.

Table 9.24  
All Lymphoid Neoplasms With Detailed Hodgkin Lymphoma Subtypes<sup>a</sup>

SEER<sup>b</sup> Incidence Rates and Annual Percent Change by Age at Diagnosis

All Races, Females, 2003-2012

Site	All Ages			Ages 0-19			Ages 20-64			Ages 65+		
	Rate	Count	APC	Rate	Count	APC	Rate	Count	APC	Rate	Count	APC
Lymphoid Neoplasm	29.1	132,955	-0.3	5.0	5,810	1.8*	19.2	52,796	-0.3	129.6	74,349	-0.6*
1 Hodgkin Lymphoma	2.4	10,480	-0.8	1.1	1,331	1.2	2.8	7,191	-1.0*	3.5	1,958	-1.6
1(a) Classical Hodgkin lymphoma	2.4	10,126	-1.0	1.1	1,296	1.1	2.8	6,943	-1.2*	3.3	1,887	-2.1
1(a)1. Lymphocyte-rich/mixed cellularity/ lymphocyte-depleted	0.3	1,420	-2.0	0.1	89	-	0.3	804	-1.1	0.9	527	-4.2
1(a)1.1 Lymphocyte-rich	0.1	310	1.8	-	-	-	0.1	194	3.1	0.2	101	-
1(a)1.2 Mixed cellularity	0.2	993	-3.6*	0.1	67	-	0.2	558	-2.5	0.7	368	-6.8*
1(a)1.3 Lymphocyte-depleted	0.0	117	-	-	-	-	0.0	52	-	0.1	58	-
1(a)2. Nodular sclerosis	1.5	6,454	-2.4*	0.9	1,048	-0.2	1.9	4,747	-2.9*	1.2	659	-3.0
1(a)3. Classical Hodgkin lymphoma, NOS <sup>c</sup>	0.5	2,252	4.0*	0.1	159	-	0.5	1,392	4.9*	1.2	701	0.7
1(b) Nodular lymphocyte predominant Hodgkin Lymphoma	0.1	354	5.4*	0.0	35	-	0.1	248	3.8	0.1	71	-
2 Non-Hodgkin lymphoma	25.8	118,358	-0.2	3.9	4,436	1.8*	15.9	44,427	-0.1	121.3	69,495	-0.4
3 Composite Hodgkin lymphoma and Non-Hodgkin lymphoma	0.0	87	-	-	-	-	0.0	42	-	0.1	44	-
4 Lymphoid neoplasm, NOS <sup>c</sup>	0.9	4,030	-4.5*	0.0	42	-	0.4	1,136	-3.1*	4.7	2,852	-5.4*

<sup>a</sup> The APC is the Annual Percent Change over the time interval.

Morton LM, Turner JJ, Cerhan JR, Linet MS, Treseler PA, Clarke CA, Jack A, Cozen W, Maynadié M, Spinelli JJ, Costantini AS, Rüdiger T, Scarpa A, Zheng T, Weisenburger DD. Proposed classification of lymphoid neoplasms for epidemiologic research from the Pathology Working Group of the International Lymphoma Epidemiology Consortium (InterLymph). *Blood*. 2007;110:695-708.

<sup>b</sup> SEER 18 areas (San Francisco, Connecticut, Detroit, Hawaii, Iowa, New Mexico, Seattle, Utah, Atlanta, San Jose-Monterey, Los Angeles, Alaska Native Registry, Rural Georgia, California excluding SF/SJM/LA, Kentucky, Louisiana, New Jersey and Georgia excluding ATL/RG).

<sup>c</sup> NOS = Not otherwise specified.

\* The APC is significantly different from zero (p<.05).

- Statistic not shown. Rate based on less than 16 cases for the time interval.

Trend based on less than 10 cases for at least one year within the time interval.



Table 9.25  
All Lymphoid Neoplasms With Detailed Hodgkin Lymphoma Subtypes<sup>a</sup>

SEER<sup>b</sup> 5-Year Relative Survival (Percent) by Age at Diagnosis

All Races, Both Sexes, 2005-2011

Site	All Ages		Ages 0-19		Ages 20-64		Ages 65+	
	Count	Percent ( 95% C.I. )	Percent ( 95% C.I. )	Percent ( 95% C.I. )	Percent ( 95% C.I. )	Percent ( 95% C.I. )	Percent ( 95% C.I. )	
Lymphoid Neoplasm	171,838	69.0 ( 68.7 , 69.3 )	89.5 ( 88.8 , 90.2 )	76.6 ( 76.2 , 76.9 )	58.4 ( 57.9 , 59.0 )			
1 Hodgkin Lymphoma	14,979	85.9 ( 85.2 , 86.6 )	97.0 ( 96.1 , 97.8 )	89.9 ( 89.1 , 90.5 )	53.6 ( 50.5 , 56.5 )			
1(a) Classical Hodgkin lymphoma	14,215	85.4 ( 84.7 , 86.1 )	96.8 ( 95.8 , 97.6 )	89.6 ( 88.8 , 90.3 )	52.2 ( 49.2 , 55.2 )			
1(a)1. Lymphocyte-rich/mixed cellularity/ lymphocyte-depleted	2,359	81.0 ( 79.0 , 82.9 )	97.6 ( 94.0 , 99.0 )	87.2 ( 85.1 , 89.0 )	54.4 ( 48.4 , 60.0 )			
1(a)1.1 Lymphocyte-rich	488	88.9 ( 84.6 , 92.0 )	100.0 ( - , - )	92.8 ( 88.3 , 95.6 )	67.2 ( 52.4 , 78.4 )			
1(a)1.2 Mixed cellularity	1,684	80.9 ( 78.5 , 83.1 )	96.5 ( 91.5 , 98.6 )	86.8 ( 84.3 , 89.0 )	54.6 ( 47.3 , 61.3 )			
1(a)1.3 Lymphocyte-depleted	187	59.9 ( 51.2 , 67.6 )	- ( - , - )	72.3 ( 61.4 , 80.5 )	31.8 ( 18.0 , 46.6 )			
1(a)2. Nodular sclerosis	8,649	90.3 ( 89.5 , 91.0 )	96.8 ( 95.6 , 97.7 )	92.6 ( 91.8 , 93.3 )	57.1 ( 52.0 , 61.9 )			
1(a)3. Classical Hodgkin lymphoma, NOS <sup>c</sup>	3,207	75.2 ( 73.3 , 77.0 )	96.2 ( 92.1 , 98.2 )	82.3 ( 80.3 , 84.1 )	45.0 ( 40.0 , 49.9 )			
1(b) Nodular lymphocyte predominant Hodgkin Lymphoma	764	94.3 ( 91.2 , 96.3 )	100.0 ( - , - )	95.1 ( 91.8 , 97.1 )	78.5 ( 57.6 , 89.9 )			
2 Non-Hodgkin lymphoma	152,478	67.8 ( 67.5 , 68.2 )	87.4 ( 86.5 , 88.2 )	74.8 ( 74.4 , 75.2 )	59.2 ( 58.6 , 59.7 )			
3 Composite Hodgkin lymphoma and Non-Hodgkin lymphoma	85	64.4 ( 50.1 , 75.6 )	- ( - , - )	71.4 ( 55.0 , 82.7 )	50.5 ( 25.1 , 71.3 )			
4 Lymphoid neoplasm, NOS <sup>c</sup>	4,296	49.3 ( 47.3 , 51.2 )	85.4 ( 73.9 , 92.2 )	61.8 ( 59.0 , 64.4 )	40.1 ( 37.4 , 42.8 )			

<sup>a</sup> Morton LM, Turner JJ, Cerhan JR, Linet MS, Treseler PA, Clarke CA, Jack A, Cozen W, Maynadié M, Spinelli JJ, Costantini AS, Rüdiger T, Scarpa A, Zheng T, Weisenburger DD. Proposed classification of lymphoid neoplasms for epidemiologic research from the Pathology Working Group of the International Lymphoma Epidemiology Consortium (InterLymph). *Blood*. 2007;110:695-708.

<sup>b</sup> SEER 18 areas (San Francisco, Connecticut, Detroit, Hawaii, Iowa, New Mexico, Seattle, Utah, Atlanta, San Jose-Monterey, Los Angeles, Alaska Native Registry, Rural Georgia, California excluding SF/SJM/LA, Kentucky, Louisiana, New Jersey and Georgia excluding ATL/RG).

<sup>c</sup> NOS = Not otherwise specified.

- Statistic not displayed due to less than 25 cases.

Table 9.26  
All Lymphoid Neoplasms With Detailed Hodgkin Lymphoma Subtypes<sup>a</sup>

SEER<sup>b</sup> 5-Year Relative Survival (Percent) by Age at Diagnosis

All Races, Males, 2005-2011

Site	All Ages		Ages 0-19	Ages 20-64	Ages 65+
	Count	Percent ( 95% C.I. )	Percent ( 95% C.I. )	Percent ( 95% C.I. )	Percent ( 95% C.I. )
Lymphoid Neoplasm	94,857	68.6 ( 68.2 , 69.0 )	89.0 ( 88.0 , 89.9 )	74.7 ( 74.2 , 75.2 )	58.2 ( 57.5 , 59.0 )
1 Hodgkin Lymphoma	8,183	85.1 ( 84.1 , 86.0 )	97.1 ( 95.7 , 98.1 )	88.5 ( 87.5 , 89.4 )	52.9 ( 48.6 , 57.0 )
1(a) Classical Hodgkin lymphoma	7,649	84.4 ( 83.3 , 85.3 )	96.9 ( 95.3 , 97.9 )	88.0 ( 86.9 , 89.0 )	51.4 ( 47.0 , 55.6 )
1(a)1. Lymphocyte-rich/mixed cellularity/ lymphocyte-depleted	1,474	82.4 ( 79.7 , 84.7 )	97.9 ( 93.3 , 99.4 )	86.9 ( 84.2 , 89.2 )	53.4 ( 44.6 , 61.5 )
1(a)1.1 Lymphocyte-rich	295	89.2 ( 83.3 , 93.1 )	100.0 ( - , - )	91.7 ( 85.2 , 95.4 )	65.4 ( 42.4 , 81.1 )
1(a)1.2 Mixed cellularity	1,074	82.6 ( 79.5 , 85.2 )	97.0 ( 90.5 , 99.1 )	87.0 ( 83.8 , 89.7 )	53.3 ( 42.7 , 62.9 )
1(a)1.3 Lymphocyte-depleted	105	60.8 ( 49.1 , 70.6 )	- ( - , - )	68.4 ( 54.2 , 79.0 )	33.4 ( 12.8 , 55.6 )
1(a)2. Nodular sclerosis	4,346	89.3 ( 88.1 , 90.4 )	96.9 ( 95.0 , 98.1 )	91.5 ( 90.2 , 92.6 )	55.8 ( 48.3 , 62.6 )
1(a)3. Classical Hodgkin lymphoma, NOS <sup>c</sup>	1,829	73.9 ( 71.3 , 76.3 )	95.1 ( 87.6 , 98.1 )	79.9 ( 77.1 , 82.3 )	45.0 ( 38.1 , 51.7 )
1(b) Nodular lymphocyte predominant Hodgkin Lymphoma	534	94.9 ( 91.1 , 97.1 )	100.0 ( - , - )	95.8 ( 92.0 , 97.8 )	75.9 ( 50.7 , 89.4 )
2 Non-Hodgkin lymphoma	84,404	67.5 ( 67.0 , 67.9 )	87.0 ( 85.8 , 88.0 )	73.1 ( 72.5 , 73.6 )	58.9 ( 58.1 , 59.7 )
3 Composite Hodgkin lymphoma and Non-Hodgkin lymphoma	45	78.3 ( 57.7 , 89.7 )	- ( - , - )	75.5 ( 54.1 , 87.9 )	- ( - , - )
4 Lymphoid neoplasm, NOS <sup>c</sup>	2,225	49.4 ( 46.7 , 52.0 )	81.9 ( 63.9 , 91.4 )	58.8 ( 55.2 , 62.3 )	40.3 ( 36.3 , 44.3 )

<sup>a</sup> Morton LM, Turner JJ, Cerhan JR, Linet MS, Treseler PA, Clarke CA, Jack A, Cozen W, Maynadié M, Spinelli JJ, Costantini AS, Rüdiger T, Scarpa A, Zheng T, Weisenburger DD. Proposed classification of lymphoid neoplasms for epidemiologic research from the Pathology Working Group of the International Lymphoma Epidemiology Consortium (InterLymph). *Blood*. 2007;110:695-708.

<sup>b</sup> SEER 18 areas (San Francisco, Connecticut, Detroit, Hawaii, Iowa, New Mexico, Seattle, Utah, Atlanta, San Jose-Monterey, Los Angeles, Alaska Native Registry, Rural Georgia, California excluding SF/SJM/LA, Kentucky, Louisiana, New Jersey and Georgia excluding ATL/RG).

<sup>c</sup> NOS = Not otherwise specified.

- Statistic not displayed due to less than 25 cases.

Table 9.27  
All Lymphoid Neoplasms With Detailed Hodgkin Lymphoma Subtypes<sup>a</sup>

SEER<sup>b</sup> 5-Year Relative Survival (Percent) by Age at Diagnosis

All Races, Females, 2005-2011

Site	All Ages		Ages 0-19		Ages 20-64		Ages 65+	
	Count	Percent ( 95% C.I. )	Percent ( 95% C.I. )	Percent ( 95% C.I. )	Percent ( 95% C.I. )	Percent ( 95% C.I. )	Percent ( 95% C.I. )	
Lymphoid Neoplasm	76,981	69.5 ( 69.0 , 69.9 )	90.2 ( 89.1 , 91.2 )	79.2 ( 78.7 , 79.7 )	58.7 ( 57.9 , 59.4 )			
1 Hodgkin Lymphoma	6,796	86.9 ( 85.9 , 87.8 )	96.9 ( 95.4 , 97.9 )	91.5 ( 90.5 , 92.4 )	54.3 ( 50.1 , 58.3 )			
1(a) Classical Hodgkin lymphoma	6,566	86.7 ( 85.6 , 87.6 )	96.8 ( 95.3 , 97.9 )	91.5 ( 90.5 , 92.4 )	53.1 ( 48.9 , 57.1 )			
1(a)1. Lymphocyte-rich/mixed cellularity/ lymphocyte-depleted	885	78.3 ( 74.7 , 81.4 )	96.7 ( 87.0 , 99.2 )	87.5 ( 84.0 , 90.3 )	54.4 ( 46.2 , 61.9 )			
1(a)1.1 Lymphocyte-rich	193	87.9 ( 80.0 , 92.8 )	- ( - , - )	94.2 ( 87.5 , 97.3 )	68.7 ( 47.7 , 82.6 )			
1(a)1.2 Mixed cellularity	610	77.8 ( 73.5 , 81.5 )	95.2 ( 81.9 , 98.8 )	86.0 ( 81.6 , 89.5 )	55.2 ( 45.0 , 64.3 )			
1(a)1.3 Lymphocyte-depleted	82	58.6 ( 45.1 , 69.9 )	- ( - , - )	78.0 ( 58.8 , 89.0 )	28.5 ( 11.8 , 47.8 )			
1(a)2. Nodular sclerosis	4,303	91.3 ( 90.2 , 92.2 )	96.7 ( 94.9 , 97.9 )	93.8 ( 92.6 , 94.7 )	58.1 ( 51.1 , 64.5 )			
1(a)3. Classical Hodgkin lymphoma, NOS <sup>c</sup>	1,378	77.0 ( 74.2 , 79.6 )	97.4 ( 92.0 , 99.2 )	85.6 ( 82.6 , 88.1 )	44.9 ( 37.7 , 51.9 )			
1(b) Nodular lymphocyte predominant Hodgkin Lymphoma	230	92.9 ( 86.1 , 96.5 )	- ( - , - )	92.8 ( 85.4 , 96.5 )	82.4 ( 28.9 , 97.0 )			
2 Non-Hodgkin lymphoma	68,074	68.3 ( 67.8 , 68.8 )	88.1 ( 86.7 , 89.3 )	77.3 ( 76.7 , 77.9 )	59.5 ( 58.7 , 60.2 )			
3 Composite Hodgkin lymphoma and Non-Hodgkin lymphoma	40	45.0 ( 23.8 , 64.2 )	- ( - , - )	- ( - , - )	- ( - , - )			
4 Lymphoid neoplasm, NOS <sup>c</sup>	2,071	49.1 ( 46.3 , 51.8 )	89.6 ( 71.0 , 96.5 )	66.3 ( 61.8 , 70.3 )	39.9 ( 36.3 , 43.4 )			

<sup>a</sup> Morton LM, Turner JJ, Cerhan JR, Linet MS, Treseler PA, Clarke CA, Jack A, Cozen W, Maynadié M, Spinelli JJ, Costantini AS, Rüdiger T, Scarpa A, Zheng T, Weisenburger DD. Proposed classification of lymphoid neoplasms for epidemiologic research from the Pathology Working Group of the International Lymphoma Epidemiology Consortium (InterLymph). *Blood*. 2007;110:695-708.

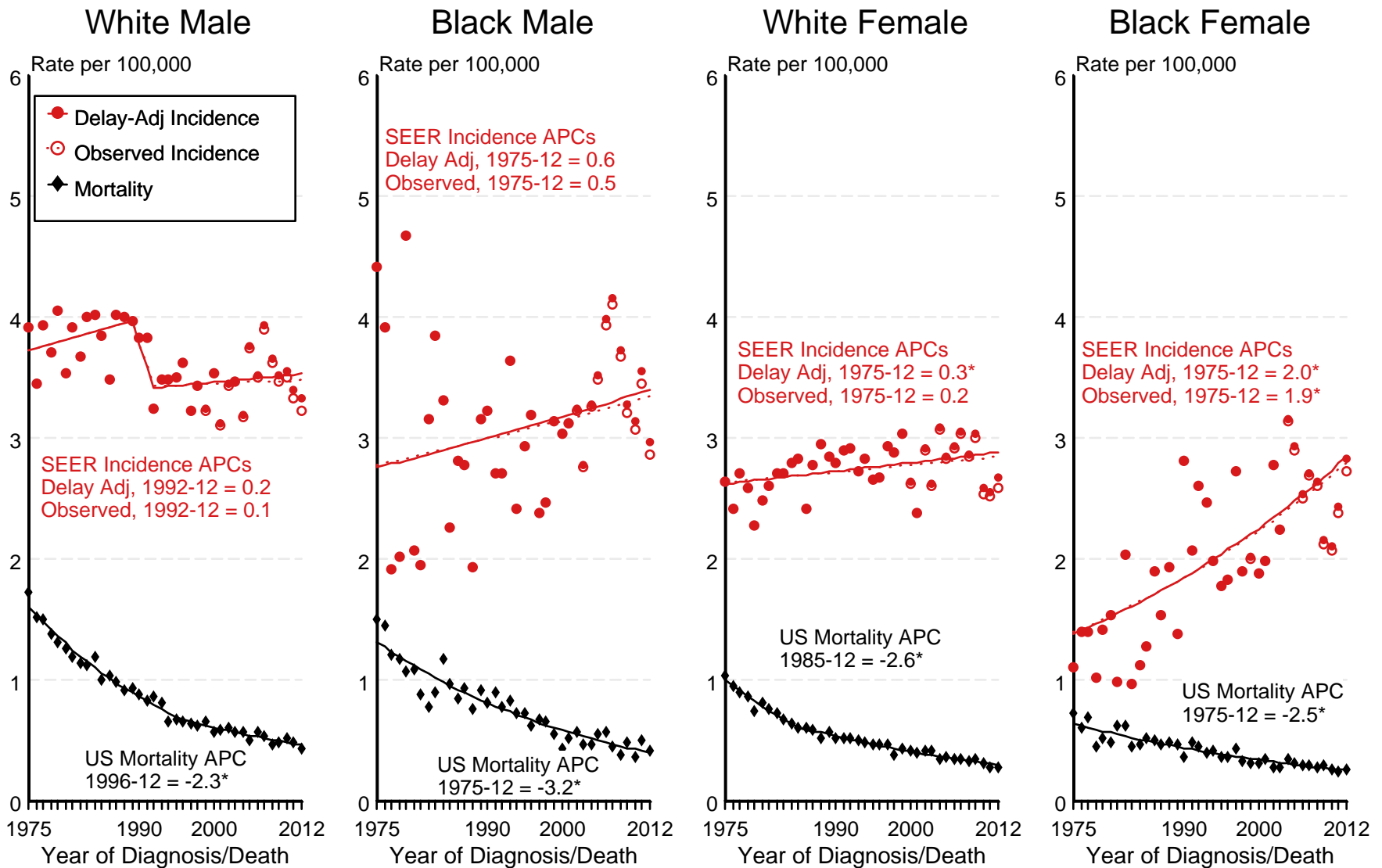
<sup>b</sup> SEER 18 areas (San Francisco, Connecticut, Detroit, Hawaii, Iowa, New Mexico, Seattle, Utah, Atlanta, San Jose-Monterey, Los Angeles, Alaska Native Registry, Rural Georgia, California excluding SF/SJM/LA, Kentucky, Louisiana, New Jersey and Georgia excluding ATL/RG).

<sup>c</sup> NOS = Not otherwise specified.

- Statistic not displayed due to less than 25 cases.

Figure 9.1

# SEER Observed Incidence, SEER Delay Adjusted Incidence and US Death Rates<sup>a</sup> Hodgkin Lymphoma, by Race and Sex



Source: SEER 9 areas and US Mortality Files (National Center for Health Statistics, CDC).

<sup>a</sup> Rates are age-adjusted to the 2000 US Std Population (19 age groups - Census P25-1103).

Regression lines and APCs are calculated using the Joinpoint Regression Program Version 4.2.0, April 2015, National Cancer Institute.

The APC is the Annual Percent Change for the regression line segments. The APC shown on the graph is for the most recent trend.

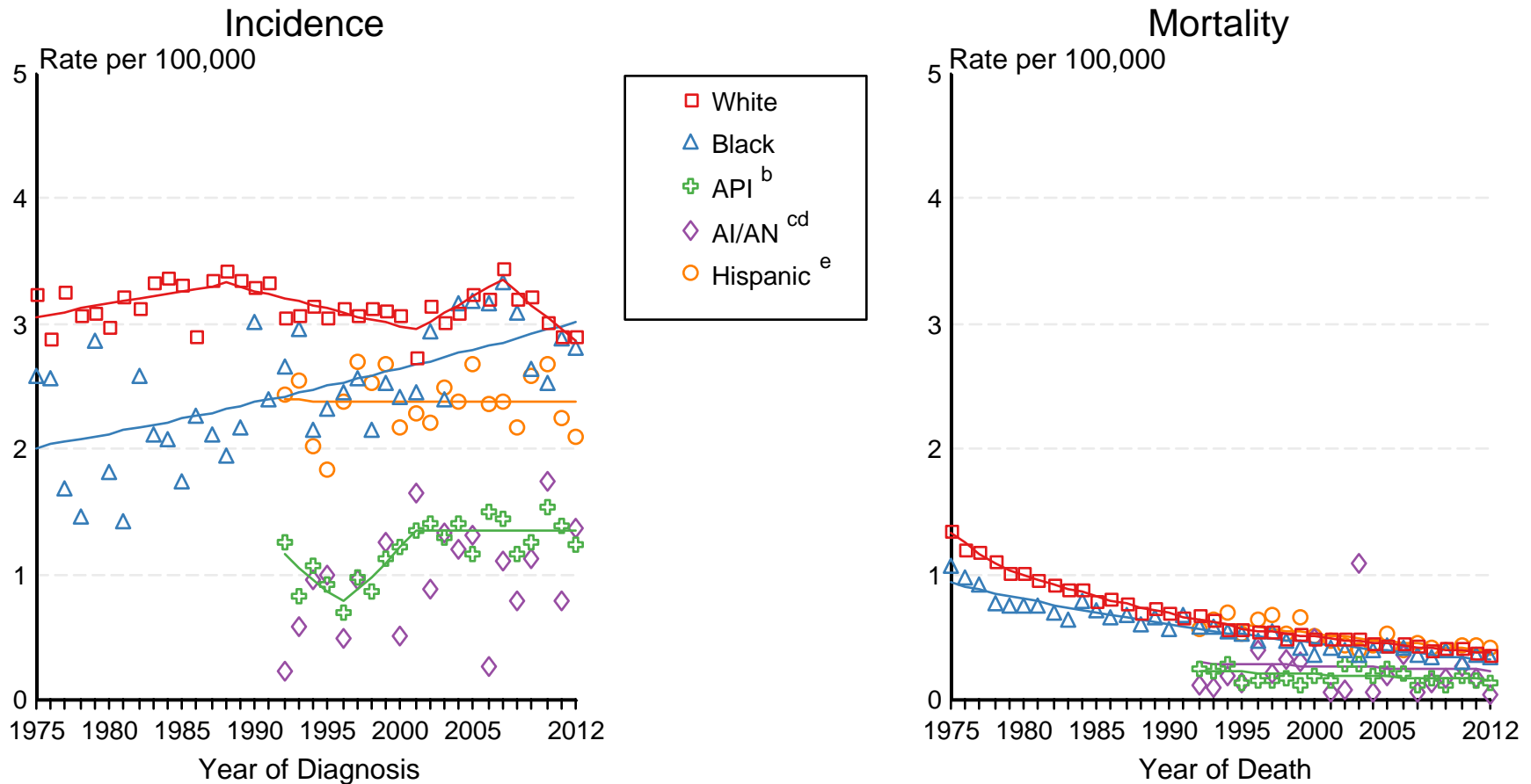
\* The APC is significantly different from zero ( $p < 0.05$ ).

Figure 9.2

# SEER Incidence and US Death Rates<sup>a</sup> Hodgkin Lymphoma, Both Sexes

Joinpoint Analyses for Whites and Blacks from 1975-2012

and for Asian/Pacific Islanders, American Indians/Alaska Natives and Hispanics from 1992-2012



Source: Incidence data for whites and blacks are from the SEER 9 areas (San Francisco, Connecticut, Detroit, Hawaii, Iowa, New Mexico, Seattle, Utah, Atlanta). Incidence data for Asian/Pacific Islanders, American Indians/Alaska Natives and Hispanics are from the SEER 13 Areas (SEER 9 Areas, San Jose-Monterey, Los Angeles, Alaska Native Registry and Rural Georgia). Mortality data are from US Mortality Files, National Center for Health Statistics, CDC.

<sup>a</sup> Rates are age-adjusted to the 2000 US Std Population (19 age groups - Census P25-1103). Regression lines are calculated using the Joinpoint Regression Program Version 4.2.0, April 2015, National Cancer Institute. Joinpoint analyses for Whites and Blacks during the 1975-2012 period allow a maximum of 5 joinpoints. Analyses for other ethnic groups during the period 1992-2012 allow a maximum of 3 joinpoints.

<sup>b</sup> API = Asian/Pacific Islander.

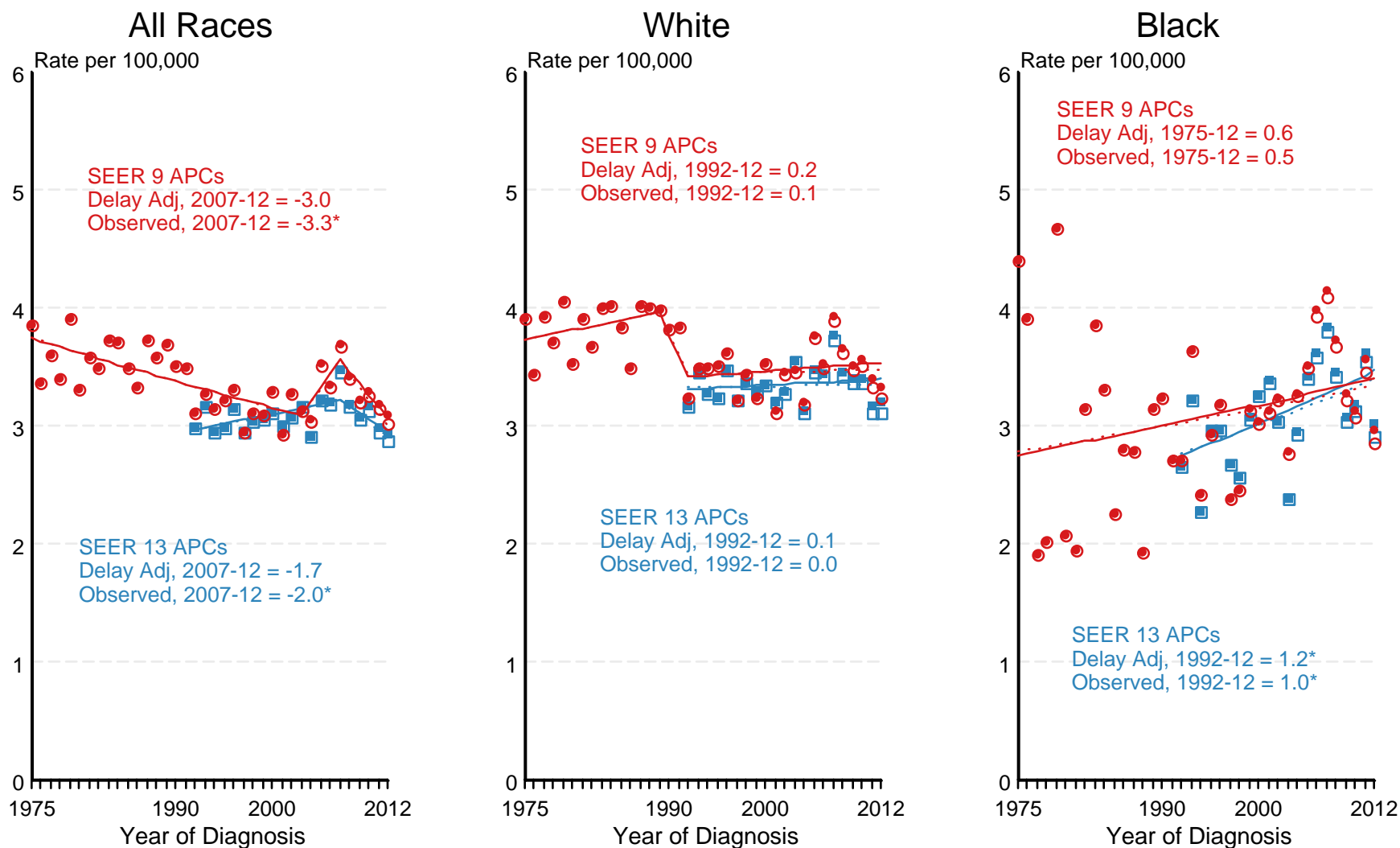
<sup>c</sup> AI/AN = American Indian/Alaska Native. Rates for American Indian/Alaska Native are based on the CHSDA(Contract Health Service Delivery Area) counties.

<sup>d</sup> Joinpoint could not fit a regression line for American Indian/Alaska Native Incidence due to insufficient data.

<sup>e</sup> Hispanic is not mutually exclusive from whites, blacks, Asian/Pacific Islanders, and American Indians/Alaska Natives. Incidence data for Hispanics are based on NHIA and exclude cases from the Alaska Native Registry. Mortality data for Hispanics exclude cases from New Hampshire and Oklahoma.

Figure 9.3

# SEER Observed Incidence and SEER Delay Adjusted Incidence Rates<sup>a</sup> SEER 9 Areas Compared to SEER 13 Areas Hodgkin Lymphoma, Male, by Race



● SEER 9 Delay-Adj. Incidence   
 ○ SEER 9 Observed Incidence   
 ■ SEER 13 Delay-Adj. Incidence   
 □ SEER 13 Observed Incidence

Source: SEER 9 areas and SEER 13 areas.

<sup>a</sup> Rates are age-adjusted to the 2000 US Std Population (19 age groups - Census P25-1103).

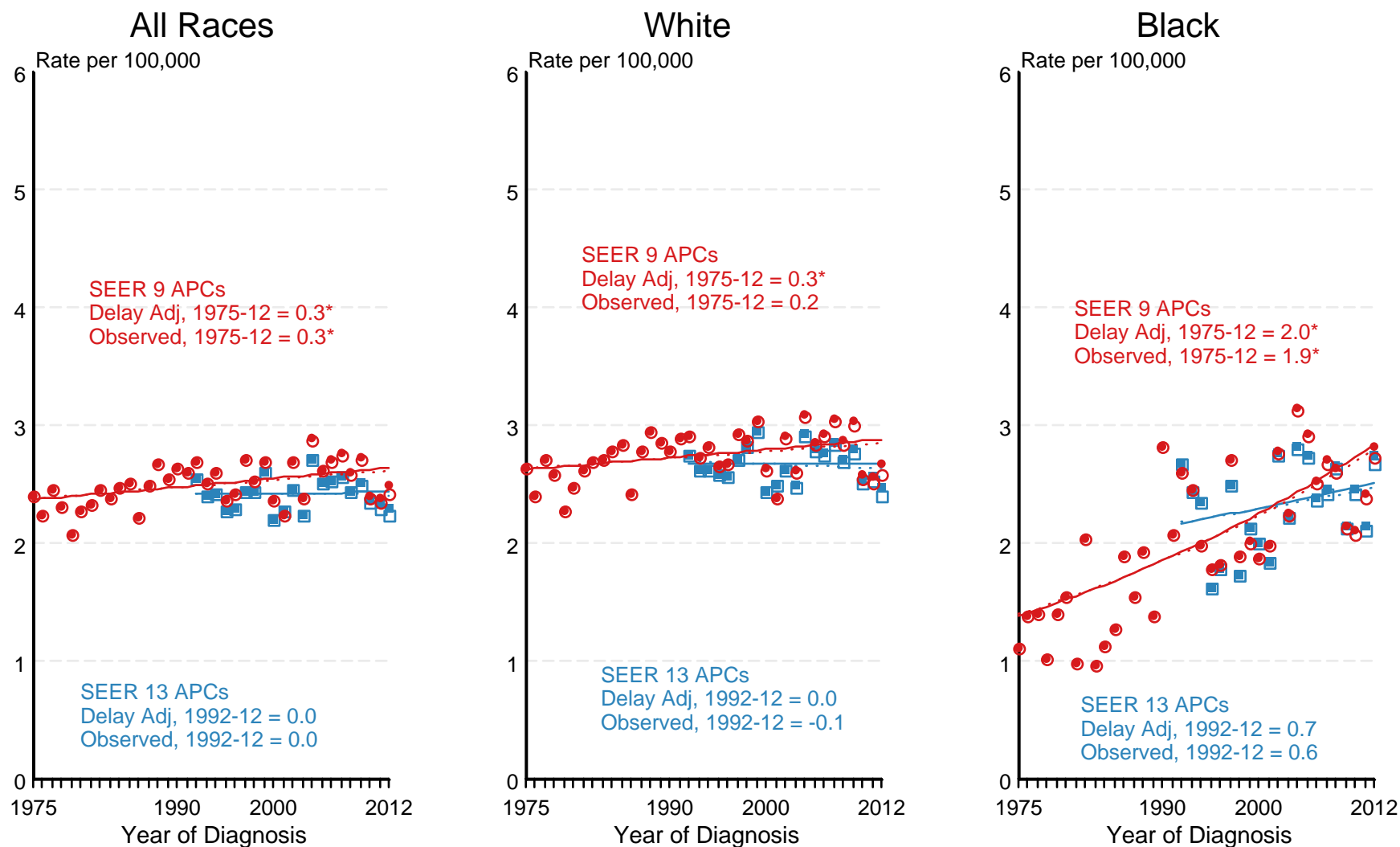
Regression lines and APCs are calculated using the Joinpoint Regression Program Version 4.2.0, April 2015, National Cancer Institute.

The APC is the Annual Percent Change for the regression line segments. The APC shown on the graph is for the most recent trend.

\* The APC is significantly different from zero ( $p < 0.05$ ).

Figure 9.4

# SEER Observed Incidence and SEER Delay Adjusted Incidence Rates<sup>a</sup> SEER 9 Areas Compared to SEER 13 Areas Hodgkin Lymphoma, Female, by Race



● SEER 9 Delay-Adj. Incidence   
 ○ SEER 9 Observed Incidence   
 ■ SEER 13 Delay-Adj. Incidence   
 □ SEER 13 Observed Incidence

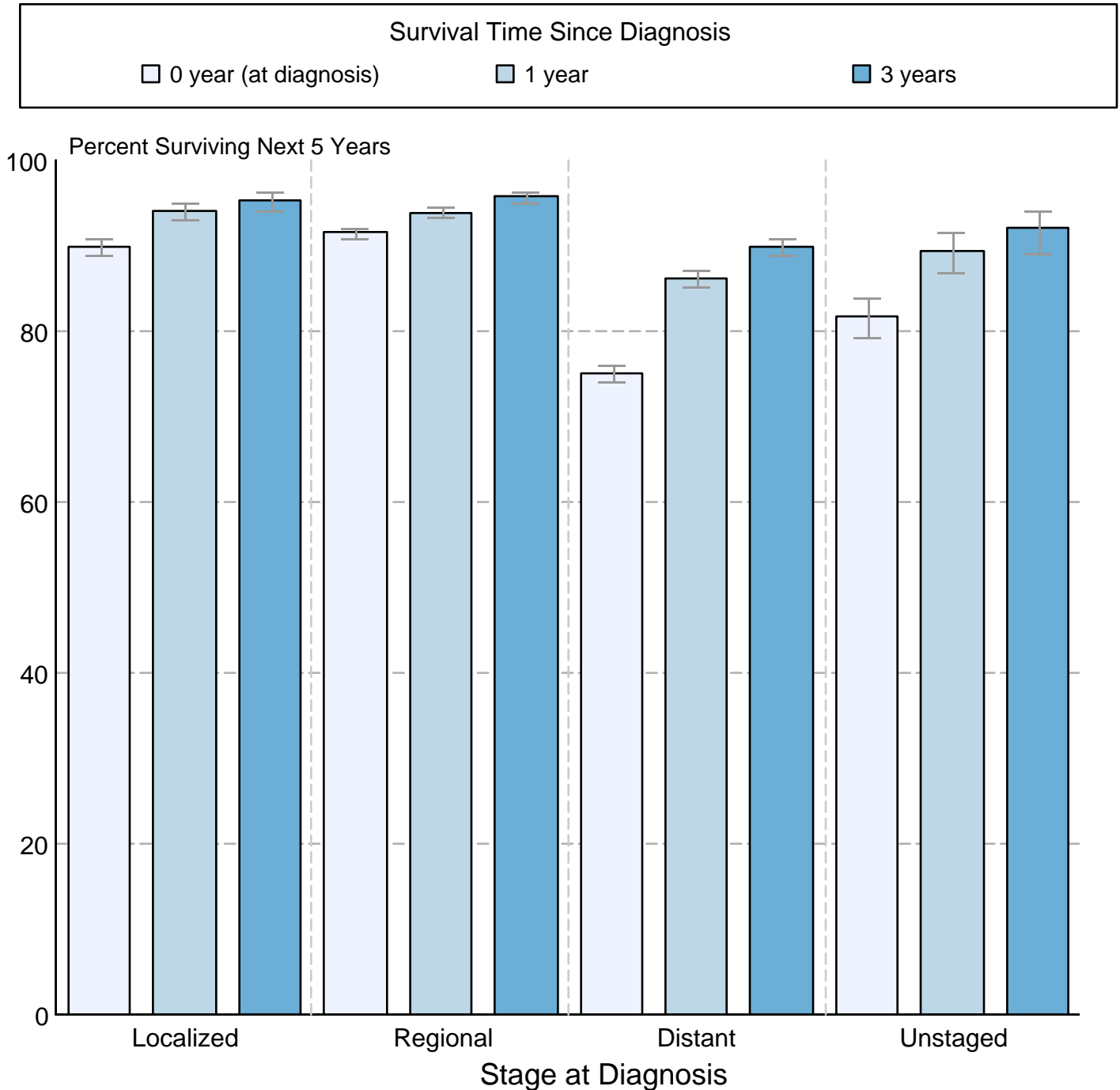
Source: SEER 9 areas and SEER 13 areas.  
<sup>a</sup> Rates are age-adjusted to the 2000 US Std Population (19 age groups - Census P25-1103).  
 Regression lines and APCs are calculated using the Joinpoint Regression Program Version 4.2.0, April 2015, National Cancer Institute.  
 The APC is the Annual Percent Change for the regression line segments. The APC shown on the graph is for the most recent trend.  
 \* The APC is significantly different from zero ( $p < 0.05$ ).

Figure 9.5

## Hodgkin Lymphoma

### 5-Year SEER Conditional Relative Survival and 95% Confidence Intervals

Probability of surviving the next 5 years given the cohort  
has already survived 0, 1, or 3 years  
1998-2011 by stage at diagnosis



Source: SEER 18 areas (San Francisco, Connecticut, Detroit, Hawaii, Iowa, New Mexico, Seattle, Utah, Atlanta, San Jose-Monterey, Los Angeles, Alaska Native Registry, Rural Georgia, California excluding SF/SJM/LA, Kentucky, Louisiana, New Jersey and Georgia excluding ATL/RG). California excluding SF/SJM/LA, Kentucky, Louisiana, New Jersey and Georgia excluding ATL/RG contribute cases for diagnosis years 2000 and later. The remaining 13 SEER Areas contribute cases for the entire time period. Percent surviving is not shown if based on less than 25 cases. Confidence intervals are not shown if length of the confidence interval is greater than 5 times the standard error.