

Table 15.1
Cancer of the Lung and Bronchus (Invasive)

Trends in SEER Incidence^{ab} and U.S. Mortality^c Using the Joinpoint Regression Program,
1975-2012 With up to Five Joinpoints, 1992-2012 With up to Three Joinpoints,
Both Sexes by Race/Ethnicity

	JP Trend 1		JP Trend 2		JP Trend 3		JP Trend 4		JP Trend 5		JP Trend 6		AAPC ^d	
	Years	APC	Years	APC	Years	APC	Years	APC	Years	APC	Years	APC	2003-12	2008-12
<u>SEER 9 Delay-Adjusted Incidence^a, 1975-2012</u>														
All Races	1975-82	2.5*	1982-91	0.9*	1991-07	-0.7*	2007-12	-2.0*					-1.4*	-2.0*
White	1975-82	2.6*	1982-91	1.1*	1991-07	-0.6*	2007-12	-2.0*					-1.4*	-2.0*
Black	1975-84	3.3*	1984-98	-0.4	1998-12	-1.6*							-1.6*	-1.6*
<u>SEER 13 Delay-Adjusted Incidence^b, 1992-2012</u>														
All Races	1992-07	-1.0*	2007-12	-2.3*									-1.7*	-2.3*
White	1992-07	-0.9*	2007-12	-2.3*									-1.6*	-2.3*
Black	1992-12	-1.5*											-1.5*	-1.5*
<u>SEER 9 Observed Incidence^a, 1975-2012</u>														
All Races	1975-82	2.5*	1982-91	0.9*	1991-07	-0.7*	2007-12	-2.5*					-1.7*	-2.5*
White	1975-82	2.6*	1982-91	1.1*	1991-07	-0.6*	2007-12	-2.5*					-1.7*	-2.5*
Black	1975-84	3.3*	1984-98	-0.4	1998-12	-1.7*							-1.7*	-1.7*
<u>SEER 13 Observed Incidence^b, 1992-2012</u>														
All Races	1992-09	-1.0*	2009-12	-3.9*									-2.0*	-3.2*
White	1992-08	-0.9*	2008-12	-3.2*									-2.0*	-3.2*
White NH ^{ef}	1992-08	-0.8*	2008-12	-3.1*									-1.8*	-3.1*
Black	1992-06	-1.2*	2006-12	-2.9*									-2.3*	-2.9*
Black NH ^{ef}	1992-09	-1.3*	2009-12	-4.3*									-2.3*	-3.6*
API ^e	1992-05	-0.4*	2005-12	-1.6*									-1.3*	-1.6*
AI/AN ^{eg}	1992-12	-0.7											-0.7	-0.7
Hispanic ^f	1992-12	-1.3*											-1.3*	-1.3*
<u>U.S. Cancer Mortality^c, 1975-2012</u>														
All Races	1975-80	3.0*	1980-90	1.8*	1990-95	-0.2	1995-05	-1.0*	2005-12	-2.3*			-2.0*	-2.3*
White	1975-80	2.9*	1980-90	1.8*	1990-95	-0.1	1995-05	-0.8*	2005-12	-2.2*			-1.9*	-2.2*
Black	1975-81	3.5*	1981-90	1.9*	1990-95	-0.7*	1995-04	-1.7*	2004-12	-2.7*			-2.6*	-2.7*
<u>U.S. Cancer Mortality^c, 1992-2012</u>														
All Races	1992-05	-0.9*	2005-12	-2.4*									-2.0*	-2.4*
White	1992-05	-0.7*	2005-12	-2.2*									-1.9*	-2.2*
White NH ^{ef}	1992-05	-0.6*	2005-12	-2.1*									-1.8*	-2.1*
Black	1992-97	-1.1*	1997-05	-1.8*	2005-09	-3.0*	2009-12	-2.2*					-2.5*	-2.4*
Black NH ^{ef}	1992-95	-0.6	1995-04	-1.7*	2004-12	-2.6*							-2.5*	-2.6*
API ^e	1992-12	-1.2*											-1.2*	-1.2*
AI/AN ^{eg}	1992-12	-0.2											-0.2	-0.2
Hispanic ^f	1992-95	1.5	1995-05	-1.2*	2005-12	-2.6*							-2.3*	-2.6*

Joinpoint Regression Program Version 4.2.0, April 2015, National Cancer Institute. (<http://surveillance.cancer.gov/joinpoint/>).
^a The APC is the Annual Percent Change based on rates age-adjusted to the 2000 US Std Population (19 age groups - Census P25-1130).
^b Trends are from the SEER 9 areas (San Francisco, Connecticut, Detroit, Hawaii, Iowa, New Mexico, Seattle, Utah, and Atlanta).
^c Trends are from the SEER 13 areas (SEER 9 Areas, Los Angeles, San Jose-Monterey, Rural Georgia, and the Alaska Native Registry).
^d Trends are from US Mortality Files, National Center for Health Statistics, Centers for Disease Control and Prevention.
^e The AAPC is the Average Annual Percent Change and is based on the APCs calculated by Joinpoint.
^f API - Asian/Pacific Islander, AI/AN - American Indian/Alaska Native, NH - Non-Hispanic
^f Hispanic and Non-Hispanic are not mutually exclusive from whites, blacks, Asian/Pacific Islanders, and American Indians/Alaska Natives. Incidence data for Hispanics and Non-Hispanics are based on NHIA and exclude cases from the Alaska Native Registry.
^f The Hispanic and Non-Hispanic mortality trends exclude deaths from New Hampshire and Oklahoma.
^g Data for American Indian/Alaska Native are based on the CHSDA (Contract Health Service Delivery Area) counties.
* The APC/AAPC is significantly different from zero (p<.05).
- Joinpoint regression line analysis could not be performed on data series.

Table 15.2
Cancer of the Lung and Bronchus (Invasive)

Trends in SEER Incidence^{ab} and U.S. Mortality^c Using the Joinpoint Regression Program,
1975-2012 With up to Five Joinpoints, 1992-2012 With up to Three Joinpoints,
Males by Race/Ethnicity

	JP Trend 1		JP Trend 2		JP Trend 3		JP Trend 4		JP Trend 5		JP Trend 6		AAPC ^d	
	Years	APC	Years	APC	Years	APC	Years	APC	Years	APC	Years	APC	2003-12	2008-12
<u>SEER 9 Delay-Adjusted Incidence^a, 1975-2012</u>														
All Races	1975-82	1.4*	1982-91	-0.4	1991-12	-1.8*							-1.8*	-1.8*
White	1975-81	1.5*	1981-90	-0.2	1990-12	-1.8*							-1.8*	-1.8*
Black	1975-84	2.8*	1984-95	-1.2*	1995-12	-2.5*							-2.5*	-2.5*
<u>SEER 13 Delay-Adjusted Incidence^b, 1992-2012</u>														
All Races	1992-09	-1.9*	2009-12	-3.3*									-2.4*	-3.0*
White	1992-09	-1.9*	2009-12	-3.2*									-2.3*	-2.9*
Black	1992-12	-2.5*											-2.5*	-2.5*
<u>SEER 9 Observed Incidence^a, 1975-2012</u>														
All Races	1975-82	1.5*	1982-91	-0.5*	1991-09	-1.8*	2009-12	-3.8*					-2.4*	-3.3*
White	1975-81	1.5*	1981-90	-0.2	1990-09	-1.7*	2009-12	-3.8*					-2.4*	-3.3*
Black	1975-84	2.9*	1984-97	-1.4*	1997-12	-2.7*							-2.7*	-2.7*
<u>SEER 13 Observed Incidence^b, 1992-2012</u>														
All Races	1992-09	-1.9*	2009-12	-4.2*									-2.7*	-3.6*
White	1992-09	-1.9*	2009-12	-4.1*									-2.6*	-3.6*
White NH ^{ef}	1992-09	-1.8*	2009-12	-3.9*									-2.5*	-3.4*
Black	1992-12	-2.6*											-2.6*	-2.6*
Black NH ^{ef}	1992-12	-2.6*											-2.6*	-2.6*
API ^e	1992-94	-5.3	1994-05	-0.4	2005-12	-2.8*							-2.3*	-2.8*
AI/AN ^{eg}	1992-12	-1.5*											-1.5*	-1.5*
Hispanic ^f	1992-12	-2.1*											-2.1*	-2.1*
<u>U.S. Cancer Mortality^c, 1975-2012</u>														
All Races	1975-78	2.5*	1978-84	1.2*	1984-90	0.4*	1990-93	-1.1	1993-05	-1.9*	2005-12	-2.9*	-2.7*	-2.9*
White	1975-82	1.7*	1982-91	0.4*	1991-05	-1.8*	2005-12	-2.9*					-2.6*	-2.9*
Black	1975-77	4.9*	1977-84	2.3*	1984-90	1.2*	1990-94	-1.2*	1994-03	-2.7*	2003-12	-3.4*	-3.4*	-3.4*
<u>U.S. Cancer Mortality^c, 1992-2012</u>														
All Races	1992-05	-1.9*	2005-12	-3.0*									-2.7*	-3.0*
White	1992-05	-1.8*	2005-12	-2.9*									-2.6*	-2.9*
White NH ^{ef}	1992-05	-1.6*	2005-12	-2.8*									-2.5*	-2.8*
Black	1992-94	-1.0	1994-03	-2.7*	2003-12	-3.4*							-3.4*	-3.4*
Black NH ^{ef}	1992-94	-0.6	1994-04	-2.7*	2004-12	-3.3*							-3.3*	-3.3*
API ^e	1992-12	-1.6*											-1.6*	-1.6*
AI/AN ^{eg}	1992-12	-1.0*											-1.0*	-1.0*
Hispanic ^f	1992-94	3.2	1994-05	-2.0*	2005-12	-3.3*							-3.0*	-3.3*

Joinpoint Regression Program Version 4.2.0, April 2015, National Cancer Institute. (<http://surveillance.cancer.gov/joinpoint/>).
^a The APC is the Annual Percent Change based on rates age-adjusted to the 2000 US Std Population (19 age groups - Census P25-1130).
^b Trends are from the SEER 9 areas (San Francisco, Connecticut, Detroit, Hawaii, Iowa, New Mexico, Seattle, Utah, and Atlanta).
^c Trends are from the SEER 13 areas (SEER 9 Areas, Los Angeles, San Jose-Monterey, Rural Georgia, and the Alaska Native Registry).
^d Trends are from US Mortality Files, National Center for Health Statistics, Centers for Disease Control and Prevention.
^e The AAPC is the Average Annual Percent Change and is based on the APCs calculated by Joinpoint.
^f API - Asian/Pacific Islander, AI/AN - American Indian/Alaska Native, NH - Non-Hispanic
^f Hispanic and Non-Hispanic are not mutually exclusive from whites, blacks, Asian/Pacific Islanders, and American Indians/Alaska Natives. Incidence data for Hispanics and Non-Hispanics are based on NHIA and exclude cases from the Alaska Native Registry.
^f The Hispanic and Non-Hispanic mortality trends exclude deaths from New Hampshire and Oklahoma.
^g Data for American Indian/Alaska Native are based on the CHSDA (Contract Health Service Delivery Area) counties.
* The APC/AAPC is significantly different from zero (p<.05).
- Joinpoint regression line analysis could not be performed on data series.

Table 15.3
Cancer of the Lung and Bronchus (Invasive)

Trends in SEER Incidence^{ab} and U.S. Mortality^c Using the Joinpoint Regression Program,
1975-2012 With up to Five Joinpoints, 1992-2012 With up to Three Joinpoints,
Females by Race/Ethnicity

	JP Trend 1		JP Trend 2		JP Trend 3		JP Trend 4		JP Trend 5		JP Trend 6		AAPC ^d	
	Years	APC	Years	APC	Years	APC	Years	APC	Years	APC	Years	APC	2003-12	2008-12
<u>SEER 9 Delay-Adjusted Incidence^a, 1975-2012</u>														
All Races	1975-82	5.6*	1982-91	3.4*	1991-06	0.5*	2006-12	-1.4*					-0.8*	-1.4*
White	1975-82	5.6*	1982-88	4.2*	1988-97	1.5*	1997-07	0.3	2007-12	-1.6*			-0.8*	-1.6*
Black	1975-91	4.2*	1991-12	0.1									0.1	0.1
<u>SEER 13 Delay-Adjusted Incidence^b, 1992-2012</u>														
All Races	1992-07	0.0	2007-12	-1.9*									-1.1*	-1.9*
White	1992-98	0.9*	1998-01	-1.3	2001-07	0.3	2007-12	-2.1*					-1.0*	-2.1*
Black	1992-05	0.7*	2005-12	-1.6*									-1.1*	-1.6*
<u>SEER 9 Observed Incidence^a, 1975-2012</u>														
All Races	1975-82	5.6*	1982-91	3.4*	1991-07	0.5*	2007-12	-2.2*					-1.0*	-2.2*
White	1975-82	5.6*	1982-88	4.1*	1988-98	1.5*	1998-01	-0.9	2001-07	0.7	2007-12	-2.3*	-1.0*	-2.3*
Black	1975-91	4.2*	1991-12	0.1									0.1	0.1
<u>SEER 13 Observed Incidence^b, 1992-2012</u>														
All Races	1992-07	0.0	2007-12	-2.4*									-1.3*	-2.4*
White	1992-98	0.9*	1998-01	-1.4	2001-07	0.3	2007-12	-2.6*					-1.3*	-2.6*
White NH ^{ef}	1992-98	1.2*	1998-01	-1.2	2001-07	0.5	2007-12	-2.5*					-1.2*	-2.5*
Black	1992-05	0.8*	2005-12	-1.9*									-1.3*	-1.9*
Black NH ^{ef}	1992-05	0.8*	2005-12	-1.8*									-1.2*	-1.8*
API ^e	1992-12	0.3											0.3	0.3
AI/AN ^{eg}	1992-12	0.5											0.5	0.5
Hispanic ^f	1992-12	-0.4*											-0.4*	-0.4*
<u>U.S. Cancer Mortality^c, 1975-2012</u>														
All Races	1975-82	6.0*	1982-90	4.2*	1990-95	1.7*	1995-03	0.3*	2003-07	-0.8	2007-12	-1.9*	-1.4*	-1.9*
White	1975-83	5.8*	1983-90	4.1*	1990-94	2.0*	1994-02	0.5*	2002-07	-0.5	2007-12	-1.8*	-1.3*	-1.8*
Black	1975-82	6.3*	1982-92	3.7*	1992-04	0.4*	2004-12	-1.9*					-1.7*	-1.9*
<u>U.S. Cancer Mortality^c, 1992-2012</u>														
All Races	1992-95	1.4*	1995-03	0.3*	2003-07	-0.8	2007-12	-1.9*					-1.4*	-1.9*
White	1992-02	0.7*	2002-07	-0.6	2007-12	-1.8*							-1.3*	-1.8*
White NH ^{ef}	1992-95	1.7*	1995-03	0.6*	2003-07	-0.5	2007-12	-1.6*					-1.2*	-1.6*
Black	1992-04	0.4*	2004-12	-1.9*									-1.7*	-1.9*
Black NH ^{ef}	1992-04	0.5*	2004-12	-1.8*									-1.6*	-1.8*
API ^e	1992-12	-0.4*											-0.4*	-0.4*
AI/AN ^{eg}	1992-97	-2.3	1997-02	6.0	2002-12	-1.2							-1.2	-1.2
Hispanic ^f	1992-03	0.5	2003-12	-1.3*									-1.3*	-1.3*

Joinpoint Regression Program Version 4.2.0, April 2015, National Cancer Institute. (<http://surveillance.cancer.gov/joinpoint/>).
^a The APC is the Annual Percent Change based on rates age-adjusted to the 2000 US Std Population (19 age groups - Census P25-1130).
^b Trends are from the SEER 9 areas (San Francisco, Connecticut, Detroit, Hawaii, Iowa, New Mexico, Seattle, Utah, and Atlanta).
^c Trends are from the SEER 13 areas (SEER 9 Areas, Los Angeles, San Jose-Monterey, Rural Georgia, and the Alaska Native Registry).
^d Trends are from US Mortality Files, National Center for Health Statistics, Centers for Disease Control and Prevention.
^e The AAPC is the Average Annual Percent Change and is based on the APCs calculated by Joinpoint.
^f API - Asian/Pacific Islander, AI/AN - American Indian/Alaska Native, NH - Non-Hispanic
Hispanic and Non-Hispanic are not mutually exclusive from whites, blacks, Asian/Pacific Islanders, and American Indians/Alaska Natives. Incidence data for Hispanics and Non-Hispanics are based on NHIA and exclude cases from the Alaska Native Registry.
The Hispanic and Non-Hispanic mortality trends exclude deaths from New Hampshire and Oklahoma.
^g Data for American Indian/Alaska Native are based on the CHSDA (Contract Health Service Delivery Area) counties.
* The APC/AAPC is significantly different from zero (p<.05).
- Joinpoint regression line analysis could not be performed on data series.

Table 15.4
Small Cell Cancer of the Lung and Bronchus^a(Invasive) and Non-Small Cell Cancer of the Lung and Bronchus^b(Invasive)

Trends in SEER 9 Observed Incidence^c Using the Joinpoint Regression Program,
1975-2012 With up to Five Joinpoints,
By Race and Sex

		JP Trend 1		JP Trend 2		JP Trend 3		JP Trend 4		JP Trend 5		JP Trend 6		AAPC ^d
		Years	APC	Years	APC	Years	APC	Years	APC	Years	APC	Years	APC	2008-12
<u>SEER 9 Observed Incidence^c for Small Cell Cancer of the Lung and Bronchus^a, 1975-2012</u>														
All Races	Both Sexes	1975-82	6.2*	1982-89	1.3	1989-12	-2.4*							-2.4*
All Races	Male	1975-81	5.6*	1981-88	0.0	1988-12	-3.1*							-3.1*
All Races	Female	1975-82	9.6*	1982-91	3.1*	1991-12	-1.8*							-1.8*
White	Both Sexes	1975-82	6.4*	1982-89	1.4*	1989-12	-2.2*							-2.2*
White	Male	1975-78	8.9*	1978-86	2.0*	1986-12	-3.0*							-3.0*
White	Female	1975-82	10.2*	1982-91	3.1*	1991-12	-1.6*							-1.6*
Black	Both Sexes	1975-86	4.8*	1986-12	-2.4*									-2.4*
Black	Male	1975-85	4.9*	1985-12	-3.3*									-3.3*
Black	Female	1975-91	4.6*	1991-12	-1.9*									-1.9*
<u>SEER 9 Observed Incidence^c for Non-Small Cell Cancer of the Lung and Bronchus^b, 1975-2012</u>														
All Races	Both Sexes	1975-80	5.2*	1980-88	1.6*	1988-00	-0.9*	2000-03	5.9*	2003-12	-1.5*			-1.5*
All Races	Male	1975-80	4.5*	1980-88	0.4	1988-99	-2.3*	1999-02	4.9	2002-12	-2.0*			-2.0*
All Races	Female	1975-78	10.2*	1978-88	4.7*	1988-00	0.6*	2000-03	6.9*	2003-12	-0.7*			-0.7*
White	Both Sexes	1975-87	2.9*	1987-00	-0.8*	2000-03	5.8	2003-12	-1.5*					-1.5*
White	Male	1975-80	4.4*	1980-88	0.5	1988-99	-2.3*	1999-02	4.9	2002-12	-2.0*			-2.0*
White	Female	1975-78	10.4*	1978-88	4.9*	1988-00	0.7*	2000-03	6.8*	2003-12	-0.7*			-0.7*
Black	Both Sexes	1975-84	4.5*	1984-00	-1.2*	2000-03	5.0	2003-12	-1.9*					-1.9*
Black	Male	1975-84	3.3*	1984-12	-1.6*									-1.6*
Black	Female	1975-90	5.1*	1990-97	-2.0	1997-02	6.0*	2002-12	-0.3					-0.3

Joinpoint Regression Program Version 4.2.0, April 2015, National Cancer Institute. (<http://surveillance.cancer.gov/joinpoint/>).
The APC is the Annual Percent Change based on rates age-adjusted to the 2000 US Std Population (19 age groups - Census P25-1130).

^a Small Cell Cancer of the Lung and Bronchus includes histologies 8002, 8041-8045.
^b Non-Small Cell Cancer of the Lung and Bronchus includes histologies 8003-8004, 8012-8015, 8021-8022, 8030-8035, 8046, 8050-8052, 8070-8076, 8078, 8082-8084, 8090, 8094, 8120, 8123, 8140-8141, 8143-8145, 8147, 8190, 8200-8201, 8211, 8240-8241, 8243-8246, 8249-8255, 8260, 8290, 8310, 8320, 8323, 8333, 8401, 8430, 8440, 8470-8471, 8480-8481, 8490, 8503, 8507, 8525, 8550, 8560, 8562, 8570-8572, 8574-8576.

^c Trends are from the SEER 9 areas (San Francisco, Connecticut, Detroit, Hawaii, Iowa, New Mexico, Seattle, Utah, and Atlanta).

^d The AAPC is the Average Annual Percent Change and is based on the APCs calculated by Joinpoint.

* The APC/AAPC is significantly different from zero (p<.05).

- Joinpoint regression line analysis could not be performed on data series.

Table 15.5
Cancer of the Lung and Bronchus (Invasive)

Delay-adjusted SEER Incidence^a Rates by Year, Race and Sex

Year of Diagnosis:	All Races			Whites			Blacks		
	Total	Males	Females	Total	Males	Females	Total	Males	Females
1975	52.25	89.53	24.53	51.94	89.13	24.85	64.55	114.90	24.66
1976	55.42	93.80	27.31	54.64	92.75	27.28	72.34	131.00	28.63
1977	56.68	95.48	28.31	55.87	94.73	28.06	73.58	124.86	33.88
1978	57.84	96.67	29.63	57.25	95.85	29.87	74.44	130.51	31.53
1979	58.61	95.81	31.57	58.02	95.19	31.63	74.54	127.72	34.11
1980	60.66	99.97	32.22	59.43	97.72	32.37	86.57	151.30	38.25
1981	62.03	99.41	35.11	61.53	98.44	35.51	82.31	142.96	37.45
1982	63.29	100.69	36.73	63.05	99.68	37.68	80.37	141.06	35.68
1983	63.45	99.46	37.89	63.04	97.63	39.10	86.62	151.34	39.49
1984	65.49	102.05	39.45	64.33	99.89	39.61	92.92	158.84	44.82
1985	64.61	98.60	40.23	63.98	96.86	40.87	89.56	149.68	46.04
1986	65.76	99.03	42.28	65.13	97.32	42.93	92.94	156.27	48.67
1987	67.90	101.52	44.15	68.08	100.66	45.50	84.76	143.59	43.28
1988	68.03	98.68	46.30	68.24	97.90	47.71	88.13	144.93	48.07
1989	67.54	97.95	46.10	67.56	97.05	47.23	89.04	142.77	51.37
1990	68.08	96.91	47.79	68.21	96.10	48.96	86.78	137.17	52.13
1991	69.20	97.22	49.58	68.98	95.90	50.63	93.14	144.76	57.05
1992	69.45	97.18	49.85	68.91	94.87	51.05	93.99	148.73	56.06
1993	67.76	93.95	49.17	67.81	92.52	50.65	86.36	135.35	52.54
1994	67.17	90.93	50.54	67.28	90.13	51.61	87.16	131.39	56.53
1995	66.84	89.83	50.43	67.08	87.95	52.41	85.87	138.94	50.12
1996	66.45	87.98	51.22	66.78	86.66	52.96	84.50	128.46	55.53
1997	66.62	86.29	52.60	67.21	84.81	54.96	82.22	129.40	50.49
1998	67.54	88.03	52.97	67.99	86.58	55.01	87.58	131.13	58.21
1999	65.85	84.60	52.51	66.30	83.28	54.42	84.52	122.24	58.94
2000	64.15	82.13	51.23	64.66	80.77	53.22	80.46	114.83	57.57
2001	64.17	81.41	51.68	65.02	81.02	53.48	80.46	114.22	57.70
2002	64.09	80.46	52.53	64.79	79.82	54.26	81.32	112.80	60.63
2003	64.79	81.08	53.12	65.54	79.57	55.68	81.13	119.38	55.72
2004	62.29	76.33	52.12	62.86	75.38	53.84	76.23	105.23	57.18
2005	63.08	75.91	53.87	64.11	75.67	55.85	74.70	97.97	59.52
2006	62.41	74.43	53.54	62.95	73.21	55.50	76.69	101.20	59.81
2007	62.17	73.81	53.67	63.25	72.98	56.18	74.18	100.67	56.66
2008	60.52	72.36	51.93	61.33	71.02	54.42	75.08	103.47	56.19
2009	60.18	70.95	52.39	60.88	69.98	54.29	74.28	98.35	58.45
2010	57.98	68.26	50.34	59.12	68.08	52.43	67.39	86.30	54.90
2011	56.83	66.36	49.83	57.93	66.08	51.95	66.27	87.00	52.73
2012	56.23	65.21	49.55	56.86	64.37	51.31	69.94	89.92	56.44

Additional information on the model used to delay-adjust SEER Incidence rates can be found at <http://surveillance.cancer.gov/delay/>.

^a SEER 9 areas (San Francisco, Connecticut, Detroit, Hawaii, Iowa, New Mexico, Seattle, Utah, and Atlanta).
Rates are per 100,000 and are age-adjusted to the 2000 US Std Population (19 age groups - Census P25-1130).
- Delay-adjusted rate is not shown for observed rates based on less than 16 cases for the time interval.

Table 15.6
Cancer of the Lung and Bronchus (Invasive)

Age-adjusted SEER Incidence^a Rates by Year, Race and Sex

Year of Diagnosis:	All Races			Whites			Blacks		
	Total	Males	Females	Total	Males	Females	Total	Males	Females
1975-2012	63.03	86.02	46.22	63.25	85.27	47.30	79.68	120.75	51.08
1975	52.25	89.53	24.53	51.94	89.13	24.85	64.55	114.90	24.66
1976	55.42	93.80	27.31	54.64	92.75	27.28	72.34	131.00	28.63
1977	56.68	95.48	28.31	55.87	94.73	28.06	73.58	124.86	33.88
1978	57.84	96.67	29.63	57.25	95.85	29.87	74.44	130.51	31.53
1979	58.61	95.81	31.57	58.02	95.19	31.63	74.54	127.72	34.11
1980	60.66	99.97	32.22	59.43	97.72	32.37	86.57	151.30	38.25
1981	62.03	99.41	35.11	61.53	98.44	35.51	82.31	142.96	37.45
1982	63.29	100.69	36.73	63.05	99.68	37.68	80.37	141.06	35.68
1983	63.45	99.46	37.89	63.04	97.63	39.10	86.62	151.34	39.49
1984	65.49	102.05	39.45	64.33	99.89	39.61	92.92	158.84	44.82
1985	64.61	98.60	40.23	63.98	96.86	40.87	89.56	149.68	46.04
1986	65.76	99.03	42.28	65.13	97.32	42.93	92.94	156.27	48.67
1987	67.90	101.52	44.15	68.08	100.66	45.50	84.76	143.59	43.28
1988	68.03	98.68	46.30	68.24	97.90	47.71	88.13	144.93	48.07
1989	67.54	97.95	46.10	67.56	97.05	47.23	89.04	142.77	51.37
1990	68.08	96.91	47.79	68.21	96.10	48.96	86.78	137.17	52.13
1991	69.20	97.22	49.58	68.98	95.90	50.63	93.14	144.76	57.05
1992	69.45	97.18	49.85	68.91	94.87	51.05	93.99	148.73	56.06
1993	67.76	93.95	49.17	67.81	92.52	50.65	86.36	135.35	52.54
1994	67.17	90.93	50.54	67.28	90.13	51.61	87.16	131.39	56.53
1995	66.84	89.83	50.43	67.08	87.95	52.41	85.87	138.94	50.12
1996	66.45	87.98	51.22	66.78	86.66	52.96	84.50	128.46	55.53
1997	66.62	86.29	52.60	67.21	84.81	54.96	82.22	129.40	50.49
1998	67.54	88.02	52.97	67.98	86.57	55.01	87.57	131.11	58.20
1999	65.84	84.59	52.50	66.28	83.26	54.41	84.50	122.21	58.92
2000	64.13	82.10	51.22	64.63	80.74	53.20	80.42	114.78	57.55
2001	64.14	81.38	51.65	64.98	80.97	53.44	80.41	114.15	57.66
2002	64.04	80.41	52.50	64.74	79.75	54.21	81.25	112.70	60.58
2003	64.74	81.02	53.07	65.46	79.48	55.61	81.03	119.25	55.66
2004	62.22	76.25	52.06	62.76	75.26	53.75	76.11	105.06	57.10
2005	62.99	75.80	53.78	63.98	75.52	55.74	74.56	97.78	59.40
2006	62.28	74.28	53.43	62.79	73.02	55.35	76.49	100.94	59.65
2007	62.00	73.62	53.52	63.03	72.74	55.99	73.94	100.34	56.48
2008	60.30	72.11	51.74	61.06	70.71	54.17	74.76	103.04	55.94
2009	59.88	70.60	52.13	60.52	69.58	53.97	73.88	97.81	58.13
2010	57.50	67.71	49.92	58.58	67.46	51.95	66.82	85.58	54.44
2011	56.03	65.42	49.12	57.02	65.04	51.14	65.38	85.84	52.03
2012	54.48	63.19	48.00	54.93	62.17	49.58	67.98	87.40	54.86

^a SEER 9 areas (San Francisco, Connecticut, Detroit, Hawaii, Iowa, New Mexico, Seattle, Utah, and Atlanta). Rates are per 100,000 and are age-adjusted to the 2000 US Std Population (19 age groups - Census P25-1130).
- Statistic not shown. Rate based on less than 16 cases for the time interval.

Table 15.7
 Small Cell Cancer of the Lung and Bronchus (Invasive)
 Age-adjusted SEER Incidence^a Rates by Year, Race and Sex

Year of Diagnosis:	All Races			Whites			Blacks		
	Total	Males	Females	Total	Males	Females	Total	Males	Females
1975-2012	8.85	11.19	7.10	9.34	11.62	7.64	8.42	11.65	6.16
1975	6.64	10.33	3.79	6.88	10.69	3.97	5.87	8.94	3.48
1976	7.06	11.36	3.84	7.12	11.51	3.89	8.23	12.82	4.76
1977	7.72	12.40	4.23	7.86	12.82	4.23	8.13	11.19	5.78
1978	8.65	13.39	5.04	8.87	13.69	5.28	7.88	13.89	3.24
1979	8.70	13.10	5.38	9.05	13.64	5.63	7.63	11.83	4.47
1980	9.11	14.20	5.25	9.34	14.40	5.56	9.99	17.53	4.38
1981	9.74	14.59	6.13	10.03	14.87	6.48	9.28	15.87	4.34
1982	10.44	15.00	7.17	10.81	15.36	7.62	9.69	16.08	4.92
1983	10.39	14.92	7.10	10.78	15.09	7.66	9.23	15.20	4.95
1984	10.71	15.24	7.41	11.07	15.71	7.76	10.41	14.99	6.86
1985	10.47	14.99	7.10	10.81	15.28	7.52	11.12	17.90	6.27
1986	11.22	15.57	7.98	11.57	16.05	8.27	12.26	17.70	8.35
1987	10.67	14.15	8.22	11.18	14.57	8.86	9.68	14.61	6.20
1988	11.39	15.29	8.53	11.92	15.63	9.23	10.49	17.86	5.30
1989	11.25	14.85	8.69	11.70	15.24	9.22	12.07	17.67	8.35
1990	10.67	13.86	8.39	11.28	14.49	9.06	9.35	13.70	6.21
1991	11.31	13.99	9.39	11.71	14.32	9.88	12.34	15.92	10.00
1992	10.51	13.41	8.45	10.97	13.85	8.96	10.22	13.32	8.05
1993	10.03	12.34	8.34	10.48	12.64	8.94	9.43	13.36	6.74
1994	9.77	11.69	8.42	10.24	11.97	9.05	9.95	13.53	7.50
1995	9.87	12.30	8.12	10.37	12.64	8.73	9.50	13.89	6.61
1996	9.72	12.09	7.98	10.28	12.48	8.64	8.80	12.02	6.84
1997	9.53	10.86	8.64	10.11	11.12	9.49	7.86	10.82	6.05
1998	9.29	10.87	8.14	9.86	11.29	8.82	9.50	12.26	7.55
1999	8.82	10.06	7.97	9.33	10.25	8.78	8.25	11.21	6.05
2000	8.80	10.45	7.59	9.28	10.85	8.13	9.59	11.80	8.02
2001	8.37	9.86	7.33	8.91	10.35	7.92	8.52	10.80	6.89
2002	8.29	9.39	7.54	8.97	9.86	8.38	7.21	9.80	5.71
2003	8.23	9.12	7.61	8.73	9.37	8.34	7.93	9.50	6.83
2004	8.12	9.00	7.49	8.52	9.24	8.00	8.64	10.08	7.75
2005	7.59	8.69	6.82	8.22	9.24	7.51	6.63	7.78	5.88
2006	7.68	8.53	7.08	8.25	8.84	7.85	6.83	8.19	5.89
2007	7.67	8.60	7.01	8.32	8.96	7.91	7.10	9.40	5.44
2008	7.10	7.96	6.47	7.59	8.11	7.21	6.38	8.85	4.87
2009	7.12	7.76	6.67	7.58	8.09	7.26	7.51	8.36	6.94
2010	6.80	7.47	6.34	7.45	7.96	7.13	5.94	6.99	5.15
2011	6.27	6.85	5.85	6.76	7.10	6.55	5.31	6.50	4.50
2012	6.42	7.14	5.86	6.89	7.50	6.40	6.57	8.07	5.64

Note: Small Cell Cancer of the Lung and Bronchus includes histologies 8002, 8041-8045.
^a SEER 9 areas (San Francisco, Connecticut, Detroit, Hawaii, Iowa, New Mexico, Seattle, Utah, and Atlanta).
 Rates are per 100,000 and are age-adjusted to the 2000 US Std Population (19 age groups - Census P25-1130).
 - Statistic not shown. Rate based on less than 16 cases for the time interval.

Table 15.8
 Non-Small Cell Cancer of the Lung and Bronchus (Invasive)
 Age-adjusted SEER Incidence^a Rates by Year, Race and Sex

Year of Diagnosis:	All Races			Whites			Blacks		
	Total	Males	Females	Total	Males	Females	Total	Males	Females
1975-2012	42.76	58.37	31.12	42.43	57.24	31.48	56.74	86.07	35.98
1975	30.10	51.18	13.90	29.37	49.95	13.86	42.64	77.46	14.84
1976	32.96	54.74	16.40	32.22	53.61	16.26	45.60	82.38	17.51
1977	35.02	58.18	17.44	34.01	56.56	17.25	50.07	88.75	20.09
1978	36.66	60.58	18.75	35.97	59.42	18.81	50.47	90.36	19.70
1979	37.73	61.45	20.00	36.84	59.99	19.90	52.76	91.51	22.84
1980	39.35	64.33	20.69	38.14	62.18	20.55	59.06	103.02	25.80
1981	40.54	64.79	22.59	40.00	63.85	22.68	54.97	94.67	24.97
1982	41.41	66.26	23.20	40.81	65.02	23.49	55.81	97.81	24.13
1983	41.84	66.20	24.06	41.16	64.37	24.68	60.76	107.14	26.02
1984	43.46	68.00	25.50	42.07	65.55	25.26	67.33	116.65	30.98
1985	43.08	65.84	26.34	42.24	63.87	26.58	63.60	107.17	31.77
1986	43.12	64.55	27.45	42.33	62.64	27.81	64.72	109.68	32.57
1987	45.63	69.48	28.34	45.27	68.19	28.88	60.52	104.01	29.58
1988	45.09	65.77	29.99	44.98	65.04	30.63	59.81	96.94	33.14
1989	44.25	64.40	29.70	43.86	63.33	30.10	61.00	97.84	34.69
1990	44.74	63.59	31.10	44.41	62.63	31.39	59.87	92.31	37.15
1991	44.93	63.77	31.37	44.14	61.91	31.68	64.85	102.15	38.11
1992	45.24	63.86	31.70	44.40	61.45	32.29	64.81	104.87	36.51
1993	43.66	61.01	30.97	43.50	59.81	31.72	56.77	89.94	33.69
1994	43.03	58.55	31.84	42.69	57.33	32.35	58.55	90.39	35.94
1995	42.39	57.05	31.67	42.18	55.54	32.58	58.29	93.15	34.32
1996	41.52	54.47	32.10	41.44	53.37	32.93	54.10	81.42	35.24
1997	41.36	54.52	31.61	41.50	53.38	32.78	53.59	84.62	32.39
1998	42.10	55.38	32.50	42.34	54.40	33.77	54.89	83.16	35.68
1999	40.50	52.63	31.60	40.51	51.58	32.44	54.26	79.37	37.10
2000	38.57	49.68	30.47	38.74	48.87	31.49	48.71	69.17	34.71
2001	46.74	59.99	36.94	47.03	59.27	37.95	60.04	86.51	42.34
2002	46.91	59.18	38.01	46.85	58.21	38.65	62.26	85.56	46.47
2003	47.34	60.01	38.05	47.56	58.49	39.69	61.43	92.00	40.70
2004	45.61	56.50	37.62	45.66	55.25	38.64	56.29	79.39	40.91
2005	46.76	56.18	39.86	46.87	55.33	40.70	58.00	74.93	46.57
2006	46.44	55.85	39.43	46.17	54.13	40.29	60.52	81.72	45.82
2007	46.30	55.25	39.64	46.42	53.88	40.88	58.51	79.26	44.60
2008	45.59	54.61	38.99	45.59	52.94	40.32	59.36	81.06	44.54
2009	44.88	52.92	38.97	45.13	51.94	40.11	56.17	75.18	43.51
2010	43.62	51.66	37.57	44.09	51.28	38.63	50.76	64.43	41.72
2011	42.80	49.93	37.45	43.01	49.06	38.47	52.54	69.85	41.14
2012	41.48	48.15	36.50	41.35	46.88	37.28	52.56	68.73	43.06

Note: Non-Small Cell Cancer of the Lung and Bronchus includes histologies 8003-8004, 8013-8015, 8021-8022, 8030-8035, 8046, 8050-8052, 8070-8076, 8078, 8082-8084, 8090, 8094, 8120, 8123, 8140-8141, 8143-8145, 8147, 8190, 8200-8201, 8211, 8240-8241, 8243-8246, 8249-8255, 8260, 8290, 8310, 8320, 8323, 8333, 8401, 8430, 8440, 8470-8471, 8480-8481, 8490, 8503, 8507, 8525, 8550, 8560, 8562, 8570-8572, 8574-8576.

^a SEER 9 areas (San Francisco, Connecticut, Detroit, Hawaii, Iowa, New Mexico, Seattle, Utah, and Atlanta).
 Rates are per 100,000 and are age-adjusted to the 2000 US Std Population (19 age groups - Census P25-1130).

- Statistic not shown. Rate based on less than 16 cases for the time interval.

Table 15.9
Cancer of the Lung and Bronchus (Invasive)

Age-adjusted U.S. Death^a Rates by Year, Race and Sex

Year of Death:	All Races			Whites			Blacks		
	Total	Males	Females	Total	Males	Females	Total	Males	Females
1975-2012	52.93	77.30	35.28	52.90	76.34	35.89	60.77	99.38	34.53
1975	42.56	76.39	17.56	42.08	75.47	17.67	49.33	91.01	17.34
1976	44.20	78.52	18.97	43.72	77.55	19.10	51.07	93.96	18.51
1977	45.49	80.45	20.01	44.82	79.09	20.09	54.56	100.80	19.91
1978	46.88	82.06	21.40	46.29	80.76	21.58	55.26	101.65	20.66
1979	47.69	82.94	22.32	47.08	81.64	22.42	56.43	102.89	22.24
1980	49.41	84.71	24.13	48.75	83.27	24.22	59.16	106.67	24.57
1981	49.99	85.16	24.95	49.28	83.52	25.10	60.57	109.71	25.10
1982	51.43	86.79	26.47	50.78	85.18	26.72	62.27	112.55	26.30
1983	52.40	87.04	28.10	51.70	85.40	28.28	63.68	112.76	28.73
1984	53.36	88.22	28.94	52.64	86.24	29.27	65.07	117.98	27.98
1985	54.32	88.54	30.41	53.68	86.69	30.81	65.76	117.50	29.64
1986	55.04	88.95	31.41	54.36	87.03	31.76	66.95	119.18	31.00
1987	56.24	90.05	32.72	55.56	88.09	33.04	68.65	121.77	32.48
1988	56.97	89.87	34.14	56.35	87.86	34.57	69.18	122.15	33.54
1989	57.90	89.77	35.77	57.21	87.57	36.27	71.04	124.72	34.87
1990	58.85	90.56	36.85	58.18	88.40	37.31	72.06	125.17	36.48
1991	58.99	89.88	37.61	58.38	87.76	38.12	71.64	123.58	37.16
1992	58.90	88.01	38.70	58.34	85.98	39.21	71.35	121.06	38.55
1993	59.13	87.60	39.28	58.66	85.52	39.97	71.12	121.98	37.72
1994	58.54	85.69	39.62	58.15	83.78	40.30	70.15	118.63	38.61
1995	58.38	84.37	40.26	58.08	82.62	40.97	69.28	116.08	38.84
1996	57.91	82.82	40.41	57.69	81.15	41.22	68.30	113.18	39.08
1997	57.51	81.33	40.82	57.31	79.83	41.52	67.89	110.21	40.53
1998	57.08	79.89	40.98	56.93	78.47	41.69	66.86	107.40	40.67
1999	55.42	76.97	40.15	55.31	75.67	40.86	65.00	103.61	40.00
2000	55.85	76.48	41.12	55.99	75.41	42.08	63.77	100.87	39.64
2001	55.32	75.32	41.01	55.55	74.34	42.05	62.54	99.32	38.80
2002	55.00	73.67	41.60	55.31	72.89	42.64	62.05	95.59	40.21
2003	54.19	72.03	41.29	54.52	71.32	42.30	60.92	92.96	40.25
2004	53.37	70.43	40.96	53.71	69.74	41.99	59.79	90.41	39.95
2005	52.85	69.49	40.71	53.32	69.09	41.70	58.52	86.96	40.12
2006	51.73	67.39	40.26	52.27	67.05	41.36	56.73	83.89	39.06
2007	50.71	65.17	40.10	51.28	64.76	41.30	55.38	82.19	38.13
2008	49.59	63.73	39.13	50.28	63.51	40.40	53.13	78.20	36.88
2009	48.41	61.54	38.63	49.18	61.41	39.97	51.56	75.49	35.90
2010	47.42	60.06	37.94	48.11	59.93	39.18	51.15	73.53	36.27
2011	46.00	57.86	37.01	46.71	57.82	38.20	49.34	70.06	35.45
2012	44.96	56.22	36.44	45.66	56.12	37.66	48.41	69.01	34.78

^a US Mortality Files, National Center for Health Statistics, Centers for Disease Control and Prevention. Rates are per 100,000 and are age-adjusted to the 2000 US Std Population (19 age groups - Census P25-1130).
- Statistic not shown. Rate based on less than 16 cases for the time interval.

Table 15.10
Cancer of the Lung and Bronchus (Invasive)SEER Incidence^a and U.S. Death^b Rates, Age-Adjusted and Age-Specific Rates, by Race and Sex

	All Races			Whites			Blacks		
	Total	Males	Females	Total	Males	Females	Total	Males	Females
<u>SEER Incidence</u>									
<u>Age at Diagnosis</u>									
Age-Adjusted Rates, 2008-2012									
All ages	58.7	70.1	50.2	60.2	70.3	52.7	67.0	90.9	50.8
Under 65	17.5	19.3	15.9	17.5	18.7	16.3	24.6	30.7	19.4
65 and over	343.2	421.3	287.4	355.2	426.3	304.0	360.0	506.7	268.1
All ages (IARC world std) ^c	36.0	41.9	31.2	36.8	41.8	32.7	43.2	57.2	32.9
Age-Specific Rates, 2008-2012									
<1	-	-	-	-	-	-	-	-	-
1-4	-	-	-	-	-	-	-	-	-
5-9	-	-	-	-	-	-	-	-	-
10-14	-	-	-	-	-	-	-	-	-
15-19	0.1	0.1	0.1	0.1	-	0.1	-	-	-
20-24	0.4	0.4	0.3	0.4	0.4	0.4	-	-	-
25-29	0.6	0.6	0.7	0.6	0.6	0.7	0.5	-	-
30-34	1.2	1.3	1.2	1.2	1.1	1.3	1.5	2.0	1.1
35-39	2.9	2.8	2.9	2.9	2.8	3.0	2.9	3.1	2.6
40-44	7.6	7.0	8.1	7.6	6.8	8.3	9.6	10.1	9.0
45-49	21.9	21.3	22.5	21.8	20.9	22.7	30.0	30.2	29.7
50-54	48.1	51.1	45.2	47.2	48.7	45.8	72.5	86.2	60.2
55-59	84.4	96.5	73.1	83.6	92.9	74.6	124.9	161.2	93.8
60-64	144.8	167.6	123.9	146.3	163.7	129.8	194.1	261.6	138.9
65-69	250.2	288.0	216.8	258.5	289.7	230.3	295.6	390.4	222.2
70-74	341.1	401.4	290.8	356.4	409.7	311.2	364.2	494.9	269.5
75-79	419.5	506.6	352.9	436.3	514.7	374.9	427.1	596.7	318.2
80-84	427.4	548.7	346.7	440.0	552.5	363.6	417.4	625.8	304.7
85+	323.1	461.6	253.9	327.8	463.3	260.0	311.1	493.6	237.2
<u>U.S. Mortality</u>									
<u>Age at Death</u>									
Age-Adjusted Rates, 2008-2012									
All ages	47.2	59.8	37.8	47.9	59.7	39.1	50.6	73.1	35.8
Under 65	13.2	15.6	10.9	13.1	15.1	11.2	17.0	22.6	12.2
65 and over	282.7	365.5	223.6	288.7	367.5	231.8	283.4	421.8	199.2
All ages (IARC world std) ^c	28.1	34.8	22.6	28.4	34.6	23.4	31.5	44.5	22.2
Age-Specific Rates, 2008-2012									
<1	-	-	-	-	-	-	-	-	-
1-4	-	-	-	-	-	-	-	-	-
5-9	-	-	-	-	-	-	-	-	-
10-14	-	-	-	-	-	-	-	-	-
15-19	0.0	0.0	-	0.0	0.0	-	-	-	-
20-24	0.1	0.1	0.1	0.1	0.1	0.1	0.1	0.2	-
25-29	0.2	0.2	0.1	0.2	0.2	0.1	0.2	0.3	-
30-34	0.5	0.6	0.5	0.5	0.5	0.5	0.7	0.9	0.5
35-39	1.5	1.6	1.4	1.5	1.6	1.5	1.4	1.5	1.3
40-44	5.1	5.1	5.1	5.2	5.1	5.3	5.7	6.3	5.1
45-49	16.6	17.5	15.7	16.6	17.1	16.0	21.1	24.3	18.3
50-54	36.9	42.4	31.8	36.5	40.7	32.3	50.0	64.6	37.2
55-59	64.4	79.0	50.6	63.6	76.5	51.3	86.5	118.7	59.3
60-64	109.9	134.7	87.0	110.4	132.3	89.7	137.1	192.7	91.8
65-69	186.8	228.6	149.5	190.2	228.2	155.7	209.0	295.8	142.4
70-74	266.2	328.0	214.2	273.5	330.7	224.2	271.4	391.1	186.2
75-79	336.6	425.3	268.2	344.7	428.3	278.8	328.2	480.2	232.4
80-84	375.5	501.4	291.5	382.3	504.5	299.0	361.3	551.5	260.3
85+	327.6	484.8	251.2	331.9	486.7	255.9	304.6	512.3	223.0

^a SEER 18 areas. Rates are per 100,000 and are age-adjusted to the 2000 US Std Population (19 age groups - Census P25-1130), unless noted.^b US Mortality Files, National Center for Health Statistics, Centers for Disease Control and Prevention.^c Rates are per 100,000 and are age-adjusted to the 2000 US Std Population (19 age groups - Census P25-1130), unless noted.

- Rates are per 100,000 and are age-adjusted to the IARC world standard population.

- Statistic not shown. Rate based on less than 16 cases for the time interval.

Table 15.11
Small Cell Cancer of the Lung and Bronchus^a(Invasive) and Non-Small Cell Cancer of the Lung and Bronchus^b(Invasive)

SEER Incidence^c Rates, Age-Adjusted and Age-Specific Rates, by Race and Sex

	All Races			Whites			Blacks		
	Total	Males	Females	Total	Males	Females	Total	Males	Females
<u>Small Cell Cancer of the Lung and Bronchus^a</u>									
<u>Age at Diagnosis</u>									
Age-Adjusted Rates, 2008-2012									
All ages	6.9	7.7	6.4	7.5	8.1	7.1	6.4	7.8	5.4
Under 65	2.5	2.5	2.4	2.7	2.7	2.8	2.4	2.7	2.1
65 and over	37.7	43.4	33.5	40.5	45.4	37.0	33.8	42.8	27.9
Age-Specific Rates, 2008-2012									
<1	-	-	-	-	-	-	-	-	-
1-4	-	-	-	-	-	-	-	-	-
5-9	-	-	-	-	-	-	-	-	-
10-14	-	-	-	-	-	-	-	-	-
15-19	-	-	-	-	-	-	-	-	-
20-24	-	-	-	-	-	-	-	-	-
25-29	-	-	-	-	-	-	-	-	-
30-34	0.1	-	-	0.1	-	-	-	-	-
35-39	0.2	0.2	0.2	0.2	0.2	0.2	-	-	-
40-44	0.8	0.8	0.8	0.9	0.8	1.0	0.7	0.9	-
45-49	3.0	2.6	3.3	3.3	2.9	3.7	3.0	2.7	3.3
50-54	7.1	7.2	7.1	7.8	7.6	8.1	7.4	8.8	6.1
55-59	12.3	12.9	11.7	13.5	13.9	13.1	11.8	13.4	10.5
60-64	21.3	22.3	20.4	23.3	23.8	22.9	19.4	22.2	17.2
65-69	35.2	38.4	32.4	38.5	40.9	36.4	29.3	36.1	24.2
70-74	42.2	47.2	38.0	46.1	50.1	42.6	36.5	45.8	29.8
75-79	45.5	50.7	41.5	48.6	52.7	45.4	42.7	53.8	35.6
80-84	38.5	48.0	32.3	40.5	49.3	34.5	36.9	46.7	31.6
85+	19.3	28.7	14.5	19.6	28.5	15.1	18.7	28.2	14.8
<u>Non-Small Cell Cancer Lung and Bronchus^b</u>									
<u>Age at Diagnosis</u>									
Age-Adjusted Rates, 2008-2012									
All ages	44.1	52.9	37.5	44.8	52.6	38.9	51.9	70.2	39.3
Under 65	13.8	15.2	12.5	13.5	14.5	12.6	20.2	25.1	16.1
65 and over	253.4	313.5	210.0	260.7	315.8	220.5	270.8	382.1	199.7
Age-Specific Rates, 2008-2012									
<1	-	-	-	-	-	-	-	-	-
1-4	-	-	-	-	-	-	-	-	-
5-9	-	-	-	-	-	-	-	-	-
10-14	-	-	-	-	-	-	-	-	-
15-19	0.1	-	0.1	0.1	-	0.1	-	-	-
20-24	0.3	0.3	0.3	0.3	0.3	0.3	-	-	-
25-29	0.5	0.5	0.6	0.5	0.4	0.6	0.5	-	-
30-34	1.0	1.1	1.0	1.0	1.0	1.0	1.2	1.6	0.9
35-39	2.4	2.4	2.5	2.5	2.4	2.5	2.3	2.5	2.1
40-44	6.3	5.7	6.9	6.2	5.4	7.0	7.9	8.4	7.5
45-49	17.6	17.1	18.1	17.3	16.6	17.9	25.1	25.0	25.3
50-54	38.0	40.2	35.9	36.7	37.6	35.7	59.9	70.4	50.5
55-59	66.1	75.4	57.3	64.1	71.3	57.2	102.9	131.6	78.4
60-64	112.4	130.9	95.4	111.5	125.8	98.0	158.4	213.7	113.2
65-69	195.1	224.8	168.7	199.2	223.4	177.2	242.7	322.6	180.9
70-74	264.3	312.4	224.3	274.3	317.2	237.8	286.8	389.8	212.2
75-79	319.4	391.7	264.2	330.1	395.9	278.7	329.9	466.9	241.9
80-84	306.7	401.0	244.0	314.6	403.7	254.1	294.0	439.3	215.4
85+	183.7	275.0	138.2	186.1	276.8	140.7	170.3	284.2	124.2

^a Small Cell Cancer of the Lung and Bronchus includes histologies 8002, 8041-8045.
^b Non-Small Cell Cancer of the Lung and Bronchus includes histologies 8003-8004, 8012-8015, 8021-8022, 8030-8035, 8046, 8050-8052, 8070-8076, 8078, 8082-8084, 8090, 8094, 8120, 8123, 8140-8141, 8143-8145, 8147, 8190, 8200-8201, 8211, 8240-8241, 8243-8246, 8249-8255, 8260, 8290, 8310, 8320, 8323, 8333, 8401, 8430, 8440, 8470-8471, 8480-8481, 8490, 8503, 8507, 8525, 8550, 8560, 8562, 8570-8572, 8574-8576.
^c SEER 18 areas. Rates are per 100,000 and are age-adjusted to the 2000 US Std Population (19 age groups - Census P25-1130), unless noted.
- Statistic not shown. Rate based on less than 16 cases for the time interval.

Table 15.12
Cancer of the Lung and Bronchus (Invasive)

5-Year Relative and Period Survival (Percent) by Race, Sex, Diagnosis Year, Stage and Age

	All Races			Whites			Blacks		
	Total	Males	Females	Total	Males	Females	Total	Males	Females
5-Year Relative Survival (Percent)									
Year of Diagnosis:									
1960-1963 ^a	-	-	-	8	7	11	5	5	6
1970-1973 ^a	-	-	-	10	9	14	7	6	10
1975-1977 ^b	12.2	11.1	15.3	12.2	11.1	15.4	11.3	10.6	13.8
1978-1980 ^b	12.8	11.3	16.3	12.9	11.5	16.2	11.7	9.7	17.8
1981-1983 ^b	13.1	11.5	16.4	13.3	11.7	16.6	11.3	10.1	14.9
1984-1986 ^b	12.8	11.2	16.0	13.0	11.2	16.3	11.1	10.3	12.8
1987-1989 ^b	13.0	11.9	14.9	13.3	12.0	15.3	10.9	10.8	11.1
1990-1992 ^b	13.6	12.1	15.9	13.9	12.4	16.2	10.4	9.3	12.6
1993-1995 ^b	14.3	12.5	16.9	14.5	12.6	17.1	12.8	11.2	15.7
1996-1998 ^b	14.6	12.9	16.8	14.8	13.0	17.0	12.4	10.8	15.0
1999-2001 ^b	15.2	13.1	17.9	15.5	13.3	18.0	12.6	10.7	15.2
2002-2004 ^b	16.1	14.1	18.4	16.5	14.4	18.8	13.2	12.7	13.9
2005-2011 ^b	18.4 ^f	15.8 ^f	21.2 ^f	18.8 ^f	16.2 ^f	21.4 ^f	15.5 ^f	13.2 ^f	18.1 ^f
5-Year Period Survival (Percent) ^{cd}									
2011	18.0	15.3	21.1	18.3	15.6	21.2	15.0	12.4	18.2
Stage Distribution (%) 2005-2011 ^{ce}									
All Stages									
Number of cases	266,845	141,478	125,367	218,982	114,549	104,433	30,047	16,792	13,255
Percent	100%	100%	100%	100%	100%	100%	100%	100%	100%
Localized	16	14	17	16	15	18	13	12	15
Regional	22	22	22	22	22	22	22	22	23
Distant	57	59	55	56	58	54	61	62	59
Unstaged	5	5	6	5	5	6	4	4	4
5-Year Relative Survival (Percent), 2005-2011 ^c									
Age at Diagnosis:									
Ages <45	30.5	26.6	34.2	32.1	27.4	36.7	25.1	23.5	26.9
Ages 45-54	20.3	16.1	25.0	21.2	16.9	26.0	15.6	12.1	20.2
Ages 55-64	19.6	16.4	23.8	20.0	16.8	24.1	15.5	13.0	19.3
Ages 65-74	18.4	15.6	21.8	18.8	16.0	22.0	14.9	12.3	18.2
Ages 75+	12.8	11.1	14.4	13.1	11.4	14.7	9.0	7.5	10.2
Ages <65	20.4	16.8	24.9	21.0	17.3	25.4	16.1	13.3	20.1
Ages 65+	15.6	13.5	17.8	15.9	13.8	18.1	12.4	10.6	14.5
Stage ^e :									
All Stages	17.4	14.8	20.3	17.7	15.1	20.5	14.3	12.0	17.1
Localized	54.8	49.1	60.0	55.3	49.7	60.2	47.3	41.8	52.8
Regional	27.4	24.8	30.2	27.5	25.2	30.1	24.3	21.4	27.7
Distant	4.2	3.5	5.0	4.0	3.3	4.8	4.1	3.4	4.9
Unstaged	7.5	6.7	8.3	7.1	6.1	8.0	9.1	8.9	9.4

^a Based on End Results data from a series of hospital registries and one population-based registry.

^b SEER 9 areas (San Francisco, Connecticut, Detroit, Hawaii, Iowa, New Mexico, Seattle, Utah, Atlanta).

Based on follow-up of patients into 2012.

^c SEER 18 areas (San Francisco, Connecticut, Detroit, Hawaii, Iowa, New Mexico, Seattle, Utah, Atlanta, San Jose-Monterey, Los Angeles, Alaska Native Registry, Rural Georgia, California excluding SF/SJM/LA, Kentucky, Louisiana, New Jersey and Georgia excluding ATL/RG).

Based on follow-up of patients into 2012.

^d Period survival provides a 2011 estimate of survival by piecing together the most recent conditional survival estimates from several cohorts. It is computed here using three year calendar blocks (2009-2011: 0-1 year survival), (2008-2010: 1-2 year survival), (2007-2009: 2-3 year survival), (2006-2008: 3-4 year survival), (2005-2007: 4-5 years survival).

^e Stage at diagnosis is classified using SEER Summary Stage 2000. Stage distribution percentages may not sum to 100 due to rounding.

^f The difference between 1975-1977 and 2005-2011 is statistically significant ($p < .05$).

^g The standard error is between 5 and 10 percentage points.

^h The standard error is greater than 10 percentage points.

- Statistic could not be calculated due to fewer than 25 cases during the time period.

Table 15.13
Small Cell Cancer of the Lung and Bronchus (Invasive)

5-Year Relative and Period Survival (Percent) by Race, Sex, Diagnosis Year, Stage and Age

	All Races			Whites			Blacks		
	Total	Males	Females	Total	Males	Females	Total	Males	Females
5-Year Relative Survival (Percent)									
Year of Diagnosis:									
1975-1977 ^a	3.6	3.1	4.8	3.7	3.1	4.9	3.7	3.8	3.6
1978-1980 ^a	4.2	3.2	6.4	4.3	3.3	6.4	3.1	2.4	5.0
1981-1983 ^a	4.5	3.5	6.2	4.6	3.6	6.1	5.0	3.7	8.2
1984-1986 ^a	4.5	3.5	6.2	4.7	3.6	6.4	3.5	2.2	5.6
1987-1989 ^a	5.0	3.9	6.6	5.1	3.8	6.8	4.0	3.3	5.1
1990-1992 ^a	5.4	4.5	6.4	5.4	4.5	6.6	4.2	3.9	4.4
1993-1995 ^a	6.4	5.1	7.9	6.3	5.0	7.6	6.7	4.0	10.4
1996-1998 ^a	5.9	5.2	6.5	6.0	5.4	6.7	3.6	2.6	4.5
1999-2001 ^a	5.7	4.8	6.7	5.6	4.3	6.9	5.2	6.0	4.2
2002-2004 ^a	6.4	4.7	8.1	6.5	4.4	8.4	5.3	5.3	5.1
2005-2011 ^a	6.9 ^e	5.6 ^e	8.2 ^e	6.8 ^e	5.6 ^e	8.1 ^e	6.7 ^e	5.0 ^e	7.8
5-Year Period Survival (Percent) ^{bc}									
2011	6.5	5.4	7.6	6.4	5.2	7.6	7.1	6.8	7.5
Stage Distribution (%) 2005-2011 ^{bd}									
All Stages									
Number of cases	35,010	17,673	17,337	30,527	15,210	15,317	3,034	1,551	1,483
Percent	100%	100%	100%	100%	100%	100%	100%	100%	100%
Localized	4	4	5	4	4	5	4	4	4
Regional	20	18	22	20	18	22	21	19	23
Distant	73	75	71	73	75	71	73	76	70
Unstaged	2	2	2	2	2	2	2	2	2
5-Year Relative Survival (Percent), 2005-2011 ^b									
Age at Diagnosis:									
Ages <45	11.1	10.5	11.9	9.9	9.0	10.9	17.1 ^f	17.8 ^f	16.2 ^f
Ages 45-54	9.5	8.1	10.9	9.2	7.4	11.2	9.1	9.6	8.8
Ages 55-64	8.3	6.3	10.5	8.2	6.3	10.2	8.4	5.0	12.2
Ages 65-74	5.8	4.7	6.9	5.8	4.5	7.0	5.8	5.4	6.1
Ages 75+	3.5	3.4	3.6	3.5	3.4	3.6	4.0	4.9	3.3
Ages <65	8.7	6.9	10.6	8.5	6.7	10.5	9.1	7.2	11.2
Ages 65+	4.8	4.1	5.5	4.8	4.0	5.5	5.2	5.5	5.0
Stage ^d :									
All Stages	6.5	5.4	7.6	6.4	5.2	7.5	7.2	6.4	8.0
Localized	27.3	24.2	30.1	27.5	24.5	30.3	25.4	22.0 ^f	28.5 ^f
Regional	14.7	12.9	16.3	14.6	12.6	16.3	15.3	14.9	15.5
Distant	2.8	2.4	3.3	2.7	2.2	3.2	3.7	3.0	4.4
Unstaged	8.2	6.8	9.5	8.0	5.6	10.2	9.8	25.5 ^f	4.1

Note: Small Cell Cancer of the Lung and Bronchus includes histologies 8002, 8041-8045.

^a SEER 9 areas (San Francisco, Connecticut, Detroit, Hawaii, Iowa, New Mexico, Seattle, Utah, Atlanta).

Based on follow-up of patients into 2012.

^b SEER 18 areas (San Francisco, Connecticut, Detroit, Hawaii, Iowa, New Mexico, Seattle, Utah, Atlanta, San Jose-Monterey, Los Angeles, Alaska Native Registry, Rural Georgia, California excluding SF/SJM/LA, Kentucky, Louisiana, New Jersey and Georgia excluding ATL/RG).

Based on follow-up of patients into 2012.

^c Period survival provides a 2011 estimate of survival by piecing together the most recent conditional survival estimates from several cohorts. It is computed here using three year calendar blocks (2009-2011: 0-1 year survival), (2008-2010: 1-2 year survival), (2007-2009: 2-3 year survival), (2006-2008: 3-4 year survival), (2005-2007: 4-5 years survival).

^d Stage at diagnosis is classified using SEER Summary Stage 2000. Stage distribution percentages may not sum to 100 due to rounding.

^e The difference between 1975-1977 and 2005-2011 is statistically significant ($p < .05$).

^f The standard error is between 5 and 10 percentage points.

^g The standard error is greater than 10 percentage points.

- Statistic could not be calculated due to fewer than 25 cases during the time period.

Table 15.14
Non-Small Cell Cancer of the Lung and Bronchus (Invasive)

5-Year Relative and Period Survival (Percent) by Race, Sex, Diagnosis Year, Stage and Age

	All Races			Whites			Blacks		
	Total	Males	Females	Total	Males	Females	Total	Males	Females
5-Year Relative Survival (Percent)									
Year of Diagnosis:									
1975-1977 ^a	16.4	14.8	21.0	16.7	15.0	21.4	13.5	12.4	17.7
1978-1980 ^a	16.7	14.8	21.4	17.0	15.2	21.5	14.2	11.6	22.8
1981-1983 ^a	17.1	15.0	21.8	17.5	15.4	22.1	13.9	12.2	19.2
1984-1986 ^a	16.5	14.3	20.9	17.0	14.7	21.5	13.2	11.9	16.4
1987-1989 ^a	16.9	15.2	19.8	17.4	15.5	20.6	13.2	12.9	14.0
1990-1992 ^a	17.6	15.5	21.1	18.3	16.1	21.7	12.8	11.1	16.0
1993-1995 ^a	18.7	16.1	22.5	19.3	16.5	23.2	15.1	13.3	18.5
1996-1998 ^a	19.4	16.7	22.9	19.9	17.1	23.5	15.3	12.9	19.3
1999-2001 ^a	20.0	16.8	24.0	20.7	17.5	24.6	14.7	12.0	18.6
2002-2004 ^a	19.6	17.0	22.8	20.4	17.6	23.7	14.9	13.8	16.5
2005-2011 ^a	22.3 ^e	19.0 ^e	26.0 ^e	23.1 ^e	19.8 ^e	26.8 ^e	17.5 ^e	14.6 ^e	21.0
5-Year Period Survival (Percent) ^{bc}									
2011	22.1	18.4	26.3	22.7	19.0	26.9	17.1	13.7	21.5
Stage Distribution (%) 2005-2011 ^{bd}									
All Stages									
Number of cases	199,144	107,357	91,787	160,916	85,793	75,123	23,746	13,402	10,344
Percent	100%	100%	100%	100%	100%	100%	100%	100%	100%
Localized	19	16	21	19	17	22	15	13	17
Regional	24	24	24	24	25	24	23	23	24
Distant	55	57	53	54	56	51	60	62	57
Unstaged	3	2	3	3	2	3	2	2	2
5-Year Relative Survival (Percent), 2005-2011 ^b									
Age at Diagnosis:									
Ages <45	32.3	28.0	36.3	34.9	29.7	39.6	24.7	22.0	27.6
Ages 45-54	22.6	17.7	28.2	24.2	19.1	29.8	16.5	12.3	21.9
Ages 55-64	22.9	19.1	28.0	23.7	19.9	28.8	17.0	14.3	21.2
Ages 65-74	22.3	18.7	26.6	23.0	19.4	27.2	17.4	14.1	21.8
Ages 75+	17.2	14.5	19.9	17.8	15.0	20.5	11.5	8.9	13.8
Ages <65	23.4	19.2	28.6	24.5	20.2	29.8	17.3	14.1	21.9
Ages 65+	19.9	16.8	23.3	20.5	17.4	23.8	15.2	12.4	18.4
Stage ^d :									
All Stages	21.2	17.8	25.3	22.0	18.4	25.9	16.3	13.3	20.1
Localized	58.7	52.8	64.1	59.3	53.5	64.5	50.4	44.5	56.4
Regional	30.6	27.3	34.6	31.1	27.9	34.8	26.2	22.7	30.7
Distant	4.7	3.9	5.8	4.6	3.7	5.7	4.3	3.6	5.3
Unstaged	12.8	10.4	15.3	12.4	9.7	15.1	12.0	9.3	15.9

Note: Non-Small Cell Cancer of the Lung and Bronchus includes histologies 8003-8004, 8012-8015, 8021-8022, 8030-8035, 8046, 8050-8052, 8070-8076, 8078, 8082-8084, 8090, 8094, 8120, 8123, 8140-8141, 8143-8145, 8147, 8190, 8200-8201, 8211, 8240-8241, 8243-8246, 8249-8255, 8260, 8290, 8310, 8320, 8323, 8333, 8401, 8430, 8440, 8470-8471, 8480-8481, 8490, 8503, 8507, 8525, 8550, 8560, 8562, 8570-8572, 8574-8576.

^a SEER 9 areas (San Francisco, Connecticut, Detroit, Hawaii, Iowa, New Mexico, Seattle, Utah, Atlanta).

Based on follow-up of patients into 2012.

^b SEER 18 areas (San Francisco, Connecticut, Detroit, Hawaii, Iowa, New Mexico, Seattle, Utah, Atlanta, San Jose-Monterey, Los Angeles, Alaska Native Registry, Rural Georgia, California excluding SF/SJM/LA, Kentucky, Louisiana, New Jersey and Georgia excluding ATL/RG).

Based on follow-up of patients into 2012.

^c Period survival provides a 2011 estimate of survival by piecing together the most recent conditional survival estimates from several cohorts. It is computed here using three year calendar blocks (2009-2011: 0-1 year survival), (2008-2010: 1-2 year survival), (2007-2009: 2-3 year survival), (2006-2008: 3-4 year survival), (2005-2007: 4-5 years survival).

^d Stage at diagnosis is classified using SEER Summary Stage 2000. Stage distribution percentages may not sum to 100 due to rounding.

^e The difference between 1975-1977 and 2005-2011 is statistically significant ($p < .05$).

^f The standard error is between 5 and 10 percentage points.

^g The standard error is greater than 10 percentage points.

- Statistic could not be calculated due to fewer than 25 cases during the time period.

Table 15.15
Cancer of the Lung and Bronchus (Invasive)

SEER^a Relative Survival (Percent)
By Year of Diagnosis

All Races, Males and Females

Year of Diagnosis

	1975- 1979	1980- 1984	1985- 1989	1990- 1994	1995	1996	1997	1998	1999	2000	2001	2002	2003	2004	2005	2006	2007	2008	2009	2010	2011
Survival Time																					
1-year	35.3	37.2	38.4	39.4	40.5	39.8	40.2	39.7	41.5	40.7	39.9	40.5	42.0	42.0	43.4	43.9	44.5	45.0	45.6	44.5	46.6
2-year	21.1	22.0	22.6	23.7	25.0	24.6	24.7	25.2	25.8	25.8	25.4	26.5	26.5	27.6	28.3	29.5	30.1	30.8	31.2	30.9	
3-year	16.3	16.9	17.1	18.3	19.2	19.3	19.3	19.8	19.8	20.2	19.8	20.7	20.7	22.2	22.6	23.5	23.9	24.6	25.1		
4-year	13.9	14.5	14.6	15.5	16.5	16.2	16.6	17.0	17.0	17.5	16.8	17.5	17.9	18.8	19.5	20.0	20.5	21.2			
5-year	12.5	12.9	13.0	13.8	14.5	14.5	14.7	14.6	15.2	15.6	14.9	15.5	16.0	16.7	17.3	17.5	18.2				
6-year	11.4	11.7	11.9	12.6	13.2	13.2	13.3	13.3	13.7	14.2	13.4	14.1	14.4	15.4	15.7	16.1					
7-year	10.7	10.8	10.9	11.6	12.3	12.1	12.3	12.2	12.7	12.9	12.3	12.9	13.2	14.1	14.4						
8-year	10.0	10.0	10.1	10.7	11.5	11.2	11.3	11.2	11.8	11.9	11.4	11.8	12.0	13.1							
9-year	9.4	9.2	9.4	9.9	10.7	10.3	10.4	10.5	11.0	11.1	10.5	11.0	11.0								
10-year	8.8	8.6	8.8	9.3	10.0	9.4	9.8	10.0	10.5	10.3	10.0	10.3									
11-year	8.3	8.1	8.2	8.6	9.5	8.8	9.1	9.4	9.7	9.6	9.3										
12-year	7.8	7.7	7.7	8.0	8.9	8.2	8.4	8.9	9.1	9.0											
13-year	7.4	7.2	7.2	7.5	8.2	7.9	7.9	8.1	8.6												
14-year	7.1	6.8	6.8	7.1	7.6	7.5	7.5	7.5													
15-year	6.6	6.4	6.4	6.7	7.2	7.0	7.1														
16-year	6.3	6.0	6.1	6.2	6.9	6.6															
17-year	6.0	5.6	5.7	5.9	6.4																
18-year	5.7	5.3	5.3	5.5																	
19-year	5.4	4.9	4.9																		
20-year	5.2	4.6	4.7																		
21-year	4.9	4.3	4.4																		
22-year	4.7	4.1	4.2																		
23-year	4.4	3.8	4.0																		
24-year	4.2	3.6																			
25-year	4.0	3.4																			
26-year	3.8	3.2																			
27-year	3.6	3.0																			
28-year	3.5	2.9																			
29-year	3.3																				
30-year	3.2																				

^a Based on the SEER 9 areas (San Francisco, Connecticut, Detroit, Hawaii, Iowa, New Mexico, Seattle, Utah, and Atlanta).

Table 15.16
Cancer of the Lung and Bronchus (Invasive)

SEER^a Relative Survival (Percent)
By Year of Diagnosis

All Races, Males

Year of Diagnosis

	1975- 1979	1980- 1984	1985- 1989	1990- 1994	1995	1996	1997	1998	1999	2000	2001	2002	2003	2004	2005	2006	2007	2008	2009	2010	2011
Survival Time																					
1-year	33.4	35.3	36.4	37.1	38.2	37.9	37.8	36.7	38.3	38.4	36.7	36.9	39.6	38.9	39.9	41.2	41.0	41.8	42.5	40.8	42.4
2-year	19.5	20.2	21.0	21.6	23.1	23.0	22.9	22.7	22.7	23.6	22.1	23.1	23.8	24.6	24.8	26.8	26.3	27.7	27.4	27.0	
3-year	14.8	15.3	15.6	16.3	17.4	17.7	17.7	17.4	16.7	18.2	17.3	17.9	18.2	19.4	19.5	20.7	20.8	22.0	21.8		
4-year	12.5	12.9	13.1	13.6	14.8	14.6	15.0	14.7	14.1	15.6	14.3	15.0	15.6	16.6	16.6	17.3	17.5	18.9			
5-year	11.1	11.4	11.6	12.1	13.2	13.1	13.3	12.4	12.6	14.0	12.7	13.5	14.1	14.8	14.8	15.0	15.6				
6-year	10.1	10.4	10.6	11.0	11.8	11.7	11.8	11.0	11.2	12.6	11.5	12.1	12.6	13.5	13.2	13.9					
7-year	9.4	9.5	9.7	10.0	11.2	10.6	10.7	10.1	10.3	11.3	10.4	11.1	11.6	12.2	12.1						
8-year	8.8	8.7	9.0	9.1	10.3	9.8	10.0	9.0	9.5	10.6	9.6	10.0	10.8	11.3							
9-year	8.2	7.9	8.4	8.4	9.6	9.1	9.1	8.5	8.7	9.9	8.9	9.2	9.9								
10-year	7.7	7.4	7.9	7.9	8.8	8.2	8.5	8.0	8.4	9.1	8.3	8.5									
11-year	7.2	7.0	7.3	7.2	8.4	7.4	7.9	7.5	7.7	8.3	7.7										
12-year	6.8	6.6	6.8	6.7	8.0	6.9	7.2	6.9	7.2	7.7											
13-year	6.3	6.2	6.3	6.2	7.3	6.7	6.8	6.3	6.8												
14-year	6.0	5.8	6.0	5.8	6.9	6.3	6.3	5.9													
15-year	5.6	5.4	5.6	5.5	6.4	5.8	6.0														
16-year	5.3	5.0	5.3	5.1	6.2	5.4															
17-year	5.1	4.6	4.8	4.8	5.8																
18-year	4.7	4.4	4.5	4.5																	
19-year	4.5	4.1	4.1																		
20-year	4.2	3.7	3.9																		
21-year	4.1	3.5	3.6																		
22-year	3.9	3.3	3.4																		
23-year	3.7	3.1	3.2																		
24-year	3.4	2.8																			
25-year	3.3	2.7																			
26-year	3.1	2.5																			
27-year	2.8	2.4																			
28-year	2.8	2.3																			
29-year	2.7																				
30-year	2.6																				

^a Based on the SEER 9 areas (San Francisco, Connecticut, Detroit, Hawaii, Iowa, New Mexico, Seattle, Utah, and Atlanta).

Table 15.17
Cancer of the Lung and Bronchus (Invasive)

SEER^a Relative Survival (Percent)
By Year of Diagnosis

All Races, Females

Year of Diagnosis

	1975- 1979	1980- 1984	1985- 1989	1990- 1994	1995	1996	1997	1998	1999	2000	2001	2002	2003	2004	2005	2006	2007	2008	2009	2010	2011
Survival Time																					
1-year	40.3	41.2	42.1	42.7	43.7	42.3	43.1	43.5	45.5	43.4	43.8	44.8	44.9	45.6	47.1	46.9	48.3	48.6	48.9	48.6	51.2
2-year	25.3	25.7	25.5	26.7	27.5	26.8	26.9	28.5	29.6	28.5	29.5	30.6	29.9	31.1	32.3	32.5	34.3	34.3	35.3	35.0	
3-year	20.2	20.5	19.7	21.1	21.6	21.4	21.3	22.9	23.6	22.8	23.0	24.1	23.7	25.4	26.0	26.6	27.2	27.4	28.7		
4-year	17.7	17.8	17.2	18.3	18.8	18.3	18.6	19.9	20.6	19.9	19.9	20.4	20.6	21.4	22.6	23.0	23.7	23.6			
5-year	16.1	16.0	15.4	16.4	16.4	16.5	16.5	17.4	18.3	17.6	17.7	17.9	18.2	18.9	20.1	20.3	21.1				
6-year	14.9	14.6	14.1	15.1	15.0	15.1	15.1	16.1	16.8	16.1	15.8	16.4	16.6	17.4	18.3	18.7					
7-year	14.0	13.6	12.9	13.9	13.9	14.0	14.1	14.9	15.6	14.9	14.6	15.0	15.1	16.2	16.9						
8-year	13.1	12.8	11.9	13.0	13.1	13.0	12.8	13.9	14.7	13.6	13.7	14.0	13.4	15.1							
9-year	12.4	11.9	11.2	12.1	12.3	11.9	12.0	13.0	13.8	12.7	12.6	13.1	12.4								
10-year	11.6	11.1	10.4	11.3	11.6	11.0	11.3	12.4	13.1	11.9	12.1	12.3									
11-year	11.1	10.5	9.8	10.6	11.0	10.5	10.7	11.8	12.1	11.3	11.3										
12-year	10.6	9.9	9.2	9.9	10.1	10.0	9.9	11.2	11.4	10.6											
13-year	10.2	9.3	8.8	9.4	9.4	9.5	9.4	10.4	10.7												
14-year	9.6	8.9	8.2	8.9	8.7	9.1	8.9	9.6													
15-year	9.2	8.4	7.8	8.4	8.4	8.6	8.4														
16-year	8.8	8.0	7.4	7.9	7.8	8.1															
17-year	8.4	7.7	7.0	7.4	7.3																
18-year	8.0	7.2	6.7	7.0																	
19-year	7.7	6.6	6.2																		
20-year	7.4	6.3	6.1																		
21-year	6.9	5.9	5.8																		
22-year	6.5	5.6	5.5																		
23-year	6.2	5.3	5.3																		
24-year	6.0	5.1																			
25-year	5.8	4.8																			
26-year	5.5	4.6																			
27-year	5.3	4.2																			
28-year	5.1	3.9																			
29-year	4.8																				
30-year	4.5																				

^a Based on the SEER 9 areas (San Francisco, Connecticut, Detroit, Hawaii, Iowa, New Mexico, Seattle, Utah, and Atlanta).

Table 15.18
Cancer of the Lung and Bronchus (Invasive)

Risk of Being Diagnosed With Cancer in 10, 20 and 30 Years,
Lifetime Risk of Being Diagnosed with Cancer Given Alive and Cancer-Free at Current Age, and
Lifetime Risk of Dying from Cancer Given Alive at Current Age
Both Sexes, 2010-2012 By Race/Ethnicity

Race/ Ethnicity	Current Age	Risk of Being Diagnosed with Cancer				Risk of Dying from Cancer	Race/ Ethnicity	Current Age	Risk of Being Diagnosed with Cancer				Risk of Dying from Cancer
		+10 yrs	+20 yrs	+30 yrs	Ever				+10 yrs	+20 yrs	+30 yrs	Ever	
All Races	0	0.00	0.00	0.01	6.57	5.56	Asian/ Pacific Islander	0	0.00	0.00	0.01	5.49	4.23
	10	0.00	0.01	0.03	6.64	5.63		10	0.00	0.01	0.02	5.53	4.26
	20	0.01	0.03	0.17	6.66	5.65		20	0.00	0.02	0.12	5.54	4.27
	30	0.02	0.17	0.77	6.71	5.70		30	0.02	0.12	0.48	5.55	4.28
	40	0.15	0.76	2.34	6.77	5.76		40	0.10	0.47	1.43	5.56	4.29
	50	0.63	2.25	4.79	6.80	5.81		50	0.37	1.35	3.18	5.53	4.28
	60	1.72	4.42	6.20	6.55	5.64		60	1.01	2.90	4.69	5.32	4.18
	70	3.06	5.09	-	5.49	4.87		70	2.03	3.95	-	4.63	3.80
80	2.75	-	-	3.29	3.17	80	2.31	-	-	3.13	2.90		
White	0	0.00	0.00	0.01	6.72	5.68	American Indian/ Alaska Native ^a	0	0.00	0.00	0.00	4.47	4.18
	10	0.00	0.01	0.03	6.78	5.74		10	0.00	0.00	0.01	4.52	4.25
	20	0.01	0.03	0.17	6.80	5.76		20	0.00	0.01	0.07	4.54	4.27
	30	0.02	0.17	0.76	6.85	5.81		30	0.00	0.06	0.42	4.61	4.35
	40	0.15	0.75	2.37	6.91	5.87		40	0.06	0.43	1.45	4.72	4.46
	50	0.62	2.28	4.92	6.94	5.91		50	0.38	1.44	3.21	4.84	4.59
	60	1.76	4.56	6.37	6.70	5.75		60	1.13	3.03	4.35	4.78	4.59
	70	3.17	5.23	-	5.61	4.95		70	2.17	3.69	-	4.18	4.15
80	2.81	-	-	3.32	3.19	80	2.07	-	-	2.75	2.74		
Black	0	0.00	0.00	0.01	6.36	5.18	Hispanic ^b	0	0.00	0.00	0.01	4.12	2.99
	10	0.00	0.01	0.03	6.48	5.29		10	0.00	0.01	0.02	4.16	3.02
	20	0.00	0.03	0.22	6.51	5.31		20	0.00	0.02	0.08	4.17	3.03
	30	0.02	0.22	1.07	6.59	5.38		30	0.01	0.07	0.32	4.19	3.04
	40	0.20	1.07	2.89	6.69	5.47		40	0.06	0.31	1.07	4.21	3.06
	50	0.91	2.80	5.14	6.75	5.54		50	0.25	1.03	2.50	4.23	3.09
	60	2.08	4.65	6.11	6.42	5.35		60	0.81	2.35	3.71	4.16	3.05
	70	3.11	4.88	-	5.26	4.58		70	1.70	3.20	-	3.69	2.79
80	2.61	-	-	3.16	3.04	80	1.90	-	-	2.52	2.09		

Devcan 6.8.0, August 2014, National Cancer Institute (<http://surveillance.cancer.gov/devcan/>).

Source: Incidence data are from the SEER 18 areas (San Francisco, Connecticut, Detroit, Hawaii, Iowa, New Mexico, Seattle, Utah, Atlanta, San Jose-Monterey, Los Angeles, Alaska Native Registry, Rural Georgia, California excluding SF/SJM/LA, Kentucky, Louisiana, New Jersey, and Georgia excluding ATL/RG). Mortality data are from the NCHS public use data file for the total US.

^a Underlying incidence and mortality data for American Indian/Alaska Native are based on the CHSDA (Contract Health Service Delivery Area) counties.

^b Hispanic is not mutually exclusive from whites, blacks, Asian/Pacific Islanders, and American Indians/Alaska Natives. Underlying incidence data for Hispanics are based on NHIA and exclude cases from the Alaska Native Registry.

- Statistic could not be calculated.

A percent of 0.00 represents a value that is below 0.005.

Table 15.19
Cancer of the Lung and Bronchus (Invasive)

Risk of Being Diagnosed With Cancer in 10, 20 and 30 Years,
Lifetime Risk of Being Diagnosed with Cancer Given Alive and Cancer-Free at Current Age, and
Lifetime Risk of Dying from Cancer Given Alive at Current Age
Males, 2010-2012 By Race/Ethnicity

Race/ Ethnicity	Current Age	Risk of Being Diagnosed with Cancer				Risk of Dying from Cancer	Race/ Ethnicity	Current Age	Risk of Being Diagnosed with Cancer				Risk of Dying from Cancer
		+10 yrs	+20 yrs	+30 yrs	Ever				+10 yrs	+20 yrs	+30 yrs	Ever	
All Races	0	0.00	0.00	0.01	7.19	6.33	Asian/ Pacific Islander	0	0.00	0.00	0.00	6.81	5.36
	10	0.00	0.01	0.03	7.27	6.42		10	0.00	0.00	0.02	6.86	5.41
	20	0.01	0.03	0.17	7.31	6.45		20	0.00	0.02	0.13	6.88	5.42
	30	0.02	0.16	0.82	7.39	6.53		30	0.02	0.12	0.55	6.91	5.44
	40	0.14	0.81	2.58	7.48	6.63		40	0.10	0.53	1.74	6.94	5.47
	50	0.69	2.51	5.34	7.57	6.73		50	0.44	1.67	3.95	6.94	5.48
	60	1.96	5.01	7.04	7.42	6.64		60	1.28	3.65	5.97	6.76	5.40
	70	3.57	5.93	-	6.38	5.86		70	2.60	5.13	-	6.00	4.97
80	3.41	-	-	4.05	4.02	80	3.18	-	-	4.27	3.91		
White	0	0.00	0.00	0.01	7.20	6.39	American Indian/ Alaska Native ^a	0	0.00	0.00	0.00	4.85	4.69
	10	0.00	0.01	0.03	7.28	6.46		10	0.00	0.00	0.01	4.91	4.76
	20	0.01	0.02	0.16	7.31	6.49		20	0.00	0.01	0.05	4.95	4.81
	30	0.02	0.16	0.79	7.39	6.57		30	0.01	0.05	0.44	5.06	4.92
	40	0.14	0.78	2.55	7.48	6.66		40	0.05	0.45	1.44	5.19	5.09
	50	0.66	2.48	5.36	7.57	6.76		50	0.42	1.46	3.47	5.40	5.30
	60	1.96	5.06	7.08	7.43	6.67		60	1.13	3.32	4.95	5.43	5.41
	70	3.62	5.98	-	6.39	5.88		70	2.59	4.52	-	5.09	5.09
80	3.42	-	-	4.01	4.01	80	2.79	-	-	3.63	3.38		
Black	0	0.00	0.00	0.01	7.52	6.40	Hispanic ^b	0	0.00	0.00	0.01	4.80	3.88
	10	0.00	0.01	0.03	7.68	6.55		10	0.00	0.01	0.02	4.85	3.92
	20	0.01	0.03	0.24	7.73	6.59		20	0.01	0.02	0.07	4.87	3.94
	30	0.03	0.23	1.27	7.87	6.71		30	0.01	0.07	0.33	4.91	3.97
	40	0.21	1.27	3.55	8.04	6.87		40	0.05	0.32	1.18	4.95	4.01
	50	1.11	3.50	6.34	8.20	7.03		50	0.27	1.15	2.89	5.01	4.07
	60	2.69	5.88	7.63	7.97	6.93		60	0.93	2.77	4.43	5.02	4.08
	70	4.07	6.31	-	6.74	6.08		70	2.08	3.95	-	4.62	3.80
80	3.62	-	-	4.31	4.26	80	2.50	-	-	3.39	2.91		

Devcan 6.8.0, August 2014, National Cancer Institute (<http://surveillance.cancer.gov/devcan/>).

Source: Incidence data are from the SEER 18 areas (San Francisco, Connecticut, Detroit, Hawaii, Iowa, New Mexico, Seattle, Utah, Atlanta, San Jose-Monterey, Los Angeles, Alaska Native Registry, Rural Georgia, California excluding SF/SJM/LA, Kentucky, Louisiana, New Jersey, and Georgia excluding ATL/RG). Mortality data are from the NCHS public use data file for the total US.

^a Underlying incidence and mortality data for American Indian/Alaska Native are based on the CHSDA (Contract Health Service Delivery Area) counties.

^b Hispanic is not mutually exclusive from whites, blacks, Asian/Pacific Islanders, and American Indians/Alaska Natives. Underlying incidence data for Hispanics are based on NHIA and exclude cases from the Alaska Native Registry.

- Statistic could not be calculated.

A percent of 0.00 represents a value that is below 0.005.

Table 15.20
Cancer of the Lung and Bronchus (Invasive)

Risk of Being Diagnosed With Cancer in 10, 20 and 30 Years,
Lifetime Risk of Being Diagnosed with Cancer Given Alive and Cancer-Free at Current Age, and
Lifetime Risk of Dying from Cancer Given Alive at Current Age
Females, 2010-2012 By Race/Ethnicity

Race/ Ethnicity	Current Age	Risk of Being Diagnosed with Cancer				Risk of Dying from Cancer	Race/ Ethnicity	Current Age	Risk of Being Diagnosed with Cancer				Risk of Dying from Cancer
		+10 yrs	+20 yrs	+30 yrs	Ever				+10 yrs	+20 yrs	+30 yrs	Ever	
All Races	0	0.00	0.00	0.01	6.04	4.89	Asian/ Pacific Islander	0	0.00	0.00	0.01	4.41	3.33
	10	0.00	0.01	0.03	6.10	4.94		10	0.00	0.01	0.02	4.44	3.35
	20	0.01	0.03	0.18	6.11	4.95		20	0.01	0.02	0.12	4.45	3.35
	30	0.02	0.17	0.72	6.13	4.97		30	0.02	0.12	0.43	4.45	3.36
	40	0.15	0.71	2.11	6.16	5.01		40	0.10	0.41	1.16	4.45	3.36
	50	0.57	2.00	4.28	6.13	5.01		50	0.31	1.07	2.54	4.40	3.33
	60	1.50	3.89	5.49	5.83	4.81		60	0.78	2.28	3.68	4.18	3.23
	70	2.64	4.42	-	4.80	4.10		70	1.58	3.06	-	3.59	2.93
80	2.30	-	-	2.78	2.61	80	1.71	-	-	2.33	2.21		
White	0	0.00	0.00	0.01	6.31	5.06	American Indian/ Alaska Native ^a	0	0.00	0.00	0.00	4.16	3.77
	10	0.00	0.01	0.03	6.37	5.11		10	0.00	0.00	0.01	4.20	3.81
	20	0.01	0.03	0.18	6.38	5.12		20	0.00	0.01	0.08	4.21	3.83
	30	0.02	0.17	0.74	6.40	5.15		30	0.00	0.08	0.40	4.25	3.87
	40	0.15	0.72	2.20	6.43	5.18		40	0.08	0.41	1.45	4.32	3.94
	50	0.58	2.09	4.50	6.40	5.17		50	0.34	1.42	2.97	4.37	4.01
	60	1.58	4.11	5.76	6.09	4.97		60	1.14	2.77	3.85	4.25	3.95
	70	2.80	4.63	-	4.99	4.22		70	1.82	3.03	-	3.47	3.45
80	2.39	-	-	2.85	2.65	80	1.58	-	-	2.16	2.37		
Black	0	0.00	0.00	0.00	5.40	4.17	Hispanic ^b	0	0.00	0.00	0.00	3.61	2.26
	10	0.00	0.00	0.02	5.49	4.25		10	0.00	0.00	0.02	3.64	2.28
	20	0.00	0.02	0.20	5.50	4.26		20	0.00	0.02	0.08	3.64	2.29
	30	0.02	0.20	0.90	5.54	4.28		30	0.01	0.08	0.31	3.65	2.29
	40	0.19	0.90	2.31	5.59	4.33		40	0.07	0.30	0.97	3.66	2.30
	50	0.73	2.19	4.12	5.58	4.35		50	0.24	0.92	2.18	3.64	2.30
	60	1.57	3.65	4.91	5.23	4.16		60	0.70	2.00	3.13	3.51	2.24
	70	2.42	3.88	-	4.25	3.56		70	1.40	2.62	-	3.03	2.05
80	2.03	-	-	2.53	2.38	80	1.48	-	-	1.97	1.58		

Devcan 6.8.0, August 2014, National Cancer Institute (<http://surveillance.cancer.gov/devcan/>).

Source: Incidence data are from the SEER 18 areas (San Francisco, Connecticut, Detroit, Hawaii, Iowa, New Mexico, Seattle, Utah, Atlanta, San Jose-Monterey, Los Angeles, Alaska Native Registry, Rural Georgia, California excluding SF/SJM/LA, Kentucky, Louisiana, New Jersey, and Georgia excluding ATL/RG). Mortality data are from the NCHS public use data file for the total US.

^a Underlying incidence and mortality data for American Indian/Alaska Native are based on the CHSDA (Contract Health Service Delivery Area) counties.

^b Hispanic is not mutually exclusive from whites, blacks, Asian/Pacific Islanders, and American Indians/Alaska Natives. Underlying incidence data for Hispanics are based on NHIA and exclude cases from the Alaska Native Registry.

- Statistic could not be calculated.

A percent of 0.00 represents a value that is below 0.005.

Table 15.21
Lung and Bronchus (Invasive)

SEER Incidence and U.S. Mortality
Age-Adjusted Rates and Trends^a
By Race/Ethnicity and Sex

SEER Incidence	SEER 18 Areas ^b			SEER 13 Areas ^b			SEER 9 Areas ^b		
	Rate 2008-2012			Trend 2003-2012 ^c			Trend 2003-2012 ^d		
	Rate per 100,000 persons			AAPC (%)			AAPC (%)		
	Total	Males	Females	Total	Males	Females	Total	Males	Females
RACE/ETHNICITY									
All Races	58.7	70.1	50.2	-2.0*	-2.7*	-1.3*	-1.7*	-2.4*	-1.0*
White	60.2	70.3	52.7	-2.0*	-2.6*	-1.3*	-1.7*	-2.4*	-1.0*
White Hispanic ^e	31.4	39.3	25.9	-1.3*	-2.1*	-0.4*	-	-	-
White Non-Hispanic ^e	64.6	74.8	56.9	-1.8*	-2.5*	-1.2*	-	-	-
Black	67.0	90.9	50.8	-2.3*	-2.6*	-1.3*	-1.7*	-2.7*	0.1
Asian/Pacific Islander	37.1	49.0	28.5	-1.3*	-2.3*	0.3	-	-	-
Amer Ind/Alaska Nat ^f	39.9	47.6	34.5	-0.7	-1.5*	0.5	-	-	-
Hispanic ^e	30.4	37.9	25.1	-1.3*	-2.1*	-0.4*	-	-	-
U.S. Mortality ^g									
	Rate 2008-2012			Trend 2003-2012 ^h					
	Rate per 100,000 persons			AAPC (%)					
	Total	Males	Females	Total	Males	Females			
RACE/ETHNICITY									
All Races	47.2	59.8	37.8	-2.0*	-2.7*	-1.4*			
White	47.9	59.7	39.1	-1.9*	-2.6*	-1.3*			
White Hispanic ^e	21.3	30.9	14.4	-2.3*	-2.8*	-1.2*			
White Non-Hispanic ^e	50.4	62.2	41.4	-1.8*	-2.5*	-1.2*			
Black	50.6	73.1	35.8	-2.5*	-3.4*	-1.7*			
Asian/Pacific Islander	24.8	34.0	18.2	-1.2*	-1.6*	-0.4*			
Amer Ind/Alaska Nat									
Total U.S.	31.7	39.4	25.8	-1.0*	-2.0*	-1.8*			
CHSDA Counties	39.4	49.1	32.1	-0.2	-1.0*	-1.2			
Non-CHSDA Counties	22.7	28.1	18.3	-2.1*	-3.2*	-1.8*			
Hispanic ^e	20.4	29.5	13.7	-2.3*	-3.0*	-1.3*			

The AAPC is the Average Annual Percent Change over the time interval. The AAPCs are calculated by the Joinpoint Regression Program Version 4.2.0, April 2015, National Cancer Institute.

- Statistic not shown. Rate based on less than 16 cases for the time interval.

Trend based on less than 10 cases for at least one year within the time interval.

a Rates are age-adjusted to the 2000 US Std Population (19 age groups - Census P25-1130). Trends are based on rates age-adjusted to the 2000 US Std Population (19 age groups - Census P25-1130).

b The SEER 9 areas are San Francisco, Connecticut, Detroit, Hawaii, Iowa, New Mexico, Seattle, Utah, and Atlanta.

The SEER 13 areas comprise the SEER 9 areas plus San Jose-Monterey, Los Angeles, the Alaska Native Registry, and Rural Georgia.

The SEER 18 areas comprise the SEER 13 areas plus California excluding SF/SJM/LA, Kentucky, Louisiana, New Jersey, and Georgia excluding ATL/RG.

c The 2003-2012 AAPC estimates are based on a Joinpoint analysis with up to 3 Joinpoints over diagnosis years 1992-2012.

d The 2003-2012 AAPC estimates are based on a Joinpoint analysis with up to 5 Joinpoints over diagnosis years 1975-2012.

e Hispanic and Non-Hispanic are not mutually exclusive from whites, blacks, Asian/Pacific Islanders, and American Indians/Alaska Natives. Incidence data for Hispanics and Non-Hispanics are based on NHIA and exclude cases from the Alaska Native Registry. The 2003-2012 Hispanic and Non-Hispanic mortality trends exclude deaths from New Hampshire and Oklahoma.

f Incidence data for American Indian/Alaska Native are based on the CHSDA (Contract Health Service Delivery Area) counties.

g US Mortality Files, National Center for Health Statistics, CDC.

h The 2003-2012 mortality AAPCs are based on a Joinpoint analysis using years of death 1992-2012.

* The APC is significantly different from zero (p<.05).

Table 15.22
Cancer of the Lung And Bronchus (Invasive)

Age-Adjusted SEER Incidence Rates^a
By Registry, Race and Sex

	All Races			Whites			Blacks		
	Total	Males	Females	Total	Males	Females	Total	Males	Females
<u>SEER Incidence Rates^a, 2008-2012</u>									
California	47.95	55.82	42.08	49.19	55.74	44.31	60.88	76.61	49.74
Greater Bay Area	45.63	52.42	40.69	46.07	49.98	43.37	68.95	83.31	58.55
San Francisco-Oakland	47.82	54.87	42.70	47.99	51.18	45.87	71.28	87.13	60.03
San Jose-Monterey	41.37	47.69	36.74	42.72	47.85	38.99	53.47	59.60	47.43
Los Angeles	41.60	50.33	35.16	41.21	48.23	35.89	57.78	74.83	46.65
Greater California	51.64	59.42	45.78	53.11	60.16	47.83	60.31	75.04	48.89
Connecticut	63.78	72.65	57.60	64.68	72.69	59.21	57.44	74.11	46.31
Detroit	76.78	90.96	66.90	75.94	87.42	68.09	84.55	111.65	66.76
Georgia	68.77	89.03	54.13	72.35	89.96	59.23	60.83	90.89	42.09
Atlanta	56.83	70.52	47.47	57.95	67.58	51.26	57.83	82.56	43.53
Rural Georgia	70.63	102.11	46.20	73.69	99.78	52.69	64.82	111.65	33.84
Greater Georgia	74.03	96.50	57.49	77.36	97.47	62.23	63.04	95.89	41.69
Hawaii	47.66	59.46	38.43	50.86	56.13	46.00	44.54	57.15	-
Iowa	65.67	81.66	53.59	65.46	81.51	53.32	90.92	100.15	84.94
Kentucky	97.49	120.36	80.66	97.78	120.19	81.20	102.78	134.88	81.48
Louisiana	73.01	95.21	56.02	72.29	90.45	58.14	76.60	112.35	51.74
New Jersey	60.02	69.26	53.74	62.26	70.56	56.74	59.45	76.85	48.41
New Mexico	42.88	49.75	37.43	44.89	51.41	39.74	50.99	74.89	29.68
Seattle-Puget Sound	62.62	70.94	56.53	63.75	71.20	58.30	68.78	83.59	55.89
Utah	28.61	34.68	23.68	28.29	34.35	23.36	51.18	61.90	-
9 SEER Areas ^b	57.56	67.69	50.12	58.35	66.90	52.10	69.60	91.58	55.02
11 SEER Areas ^b	53.12	62.75	46.03	54.03	62.12	48.06	66.38	86.81	52.78
13 SEER Areas ^b	53.25	62.98	46.09	54.09	62.25	48.08	66.34	87.13	52.50
18 SEER Areas ^b	58.69	70.13	50.19	60.18	70.25	52.68	66.98	90.88	50.82

^a Rates are per 100,000 and are age-adjusted to the 2000 US Std Population (19 age groups - Census P25-1130)

^b The SEER 9 areas are San Francisco, Connecticut, Detroit, Hawaii, Iowa, New Mexico, Seattle, Utah and Atlanta.

The SEER 11 areas comprise the SEER 9 areas plus San Jose-Monterey and Los Angeles.

The SEER 13 areas comprise the SEER 11 areas plus the Alaska Native Registry and Rural Georgia.

The SEER 18 areas comprise the SEER 13 areas plus California excluding SF/SJM/LA, Kentucky, Louisiana, New Jersey and Georgia excluding ATL/RG.

- Statistic not shown. Rate based on less than 16 cases for the time interval.

Table 15.23
Cancer of the Lung And Bronchus (Invasive)

Age-Adjusted SEER Death Rates^a
By Registry, Race and Sex

	All Races			Whites			Blacks		
	Total	Males	Females	Total	Males	Females	Total	Males	Females
<u>SEER Death Rates^a, 2008-2012</u>									
California	36.15	43.67	30.51	37.39	43.95	32.43	46.82	60.70	37.08
Greater Bay Area	32.83	38.93	28.35	33.72	37.71	30.80	50.69	63.70	41.51
San Francisco-Oakland	34.40	40.74	29.74	34.90	38.36	32.39	52.81	67.86	42.45
San Jose-Monterey	29.77	35.44	25.61	31.67	36.61	28.01	36.13	36.70	35.22
Los Angeles	32.42	41.34	25.84	32.12	39.53	26.51	47.09	63.07	36.87
Greater California	39.00	46.35	33.43	40.42	47.35	35.17	44.27	56.10	34.94
Connecticut	41.58	49.73	35.82	42.28	49.93	36.88	38.55	52.76	29.42
Detroit	52.74	65.98	43.36	51.99	63.19	44.08	58.90	81.69	43.95
Georgia	50.06	68.00	37.23	52.44	68.47	40.55	44.94	70.36	29.36
Atlanta	40.13	52.10	32.06	40.30	49.18	34.09	42.31	63.90	30.14
Rural Georgia	52.35	82.06	30.33	52.19	73.20	35.93	53.30	106.74	20.40
Greater Georgia	54.33	74.22	39.81	56.62	74.89	42.93	46.69	73.47	29.43
Hawaii	33.46	44.37	24.98	38.86	44.31	33.73	44.15	61.29	-
Iowa	47.75	61.40	37.49	47.78	61.47	37.50	59.86	70.37	51.66
Kentucky	70.92	92.19	55.23	71.21	92.30	55.55	74.45	101.13	56.67
Louisiana	57.64	77.40	42.84	56.66	72.97	44.29	61.55	93.44	39.73
New Jersey	42.14	52.05	35.26	43.55	52.85	37.10	44.00	61.82	32.95
New Mexico	33.27	40.90	27.21	34.91	42.46	28.89	42.47	66.34	20.62
Seattle-Puget Sound	44.36	52.31	38.50	45.65	53.03	40.19	47.52	59.65	37.81
Utah	20.41	26.35	15.56	20.46	26.37	15.63	32.99	-	-
9 SEER Areas ^b	40.49	49.86	33.57	41.27	49.51	35.15	49.44	68.44	37.01
11 SEER Areas ^b	38.10	47.17	31.39	38.90	46.80	32.99	48.67	66.61	36.91
13 SEER Areas ^b	38.31	47.45	31.53	39.06	46.98	33.13	48.71	67.12	36.65
18 SEER Areas ^b	42.90	53.62	34.92	44.08	53.80	36.78	50.02	71.04	36.00
Total U.S.	47.22	59.79	37.80	47.94	59.68	39.05	50.65	73.09	35.83

^a US Mortality Files, National Center for Health Statistics, Centers for Disease Control and Prevention. Rates are per 100,000 and are age-adjusted to the 2000 US Std Population (19 age groups - Census P25-1130).

^b The SEER 9 areas are San Francisco, Connecticut, Detroit, Hawaii, Iowa, New Mexico, Seattle, Utah and Atlanta. The SEER 11 areas comprise the SEER 9 areas plus San Jose-Monterey and Los Angeles.

The SEER 13 areas comprise the SEER 11 areas plus the Alaska Native Registry and Rural Georgia.

The SEER 18 areas comprise the SEER 13 areas plus California excluding SF/SJM/LA, Kentucky, Louisiana, New Jersey and Georgia excluding ATL/RG.

- Statistic not shown. Rate based on less than 16 cases for the time interval.

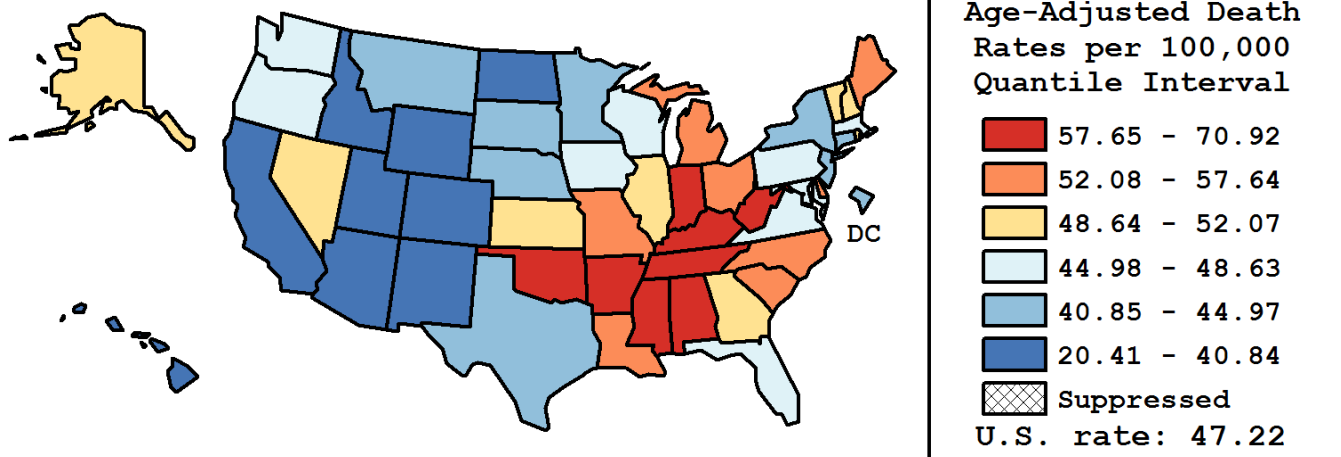
Table 15.24
Cancer of the Lung and Bronchus (Invasive)

Age-Adjusted Cancer Death^a Rates By State, All Races, 2008-2012

Males and Females

State	Rate	SE	Rank(CI) ^d	PD
TOTAL U.S.	47.22	0.05		
High Five States				
Kentucky	70.92 ^b	0.55	01(01,01)	50.18 ^c
Arkansas	63.26 ^b	0.62	02(02,04)	33.95 ^c
West Virginia	62.70 ^b	0.73	03(02,05)	32.77 ^c
Tennessee	61.39 ^b	0.42	04(03,05)	30.00 ^c
Mississippi	61.32 ^b	0.63	05(02,05)	29.86 ^c
Low Five States				
California	36.15 ^b	0.14	47(47,47)	-23.44 ^c
Colorado	34.45 ^b	0.39	48(48,50)	-27.05 ^c
Hawaii	33.46 ^b	0.66	49(48,50)	-29.14 ^c
New Mexico	33.27 ^b	0.55	50(48,50)	-29.54 ^c
Utah	20.41 ^b	0.45	51(51,51)	-56.79 ^c

State	Rate	SE	Rank(CI) ^d	PD	State	Rate	SE	Rank(CI) ^d	PD
Alabama	58.14 ^b	0.47	07(06,10)	23.12 ^c	Montana	42.77 ^b	0.86	37(34,44)	-9.42 ^c
Alaska	52.07	1.57	17(11,26)	10.25 ^c	Nebraska	44.18 ^b	0.67	35(32,39)	-6.45 ^c
Arizona	38.47 ^b	0.33	46(44,46)	-18.53 ^c	Nevada	49.37	0.63	22(17,27)	4.54
Arkansas	63.26 ^b	0.62	02(02,04)	33.95 ^c	New Hampshire	48.65	0.82	24(17,31)	3.02
California	36.15 ^b	0.14	47(47,47)	-23.44 ^c	New Jersey	42.14 ^b	0.30	39(37,43)	-10.77 ^c
Colorado	34.45 ^b	0.39	48(48,50)	-27.05 ^c	New Mexico	33.27 ^b	0.55	50(48,50)	-29.54 ^c
Connecticut	41.58 ^b	0.45	41(37,44)	-11.95 ^c	New York	42.03 ^b	0.20	40(37,43)	-11.00 ^c
Delaware	54.20 ^b	1.03	12(10,17)	14.78 ^c	North Carolina	53.03 ^b	0.33	15(12,17)	12.30 ^c
D.C.	42.51 ^b	1.23	38(32,45)	-9.98 ^c	North Dakota	40.84 ^b	1.03	43(36,46)	-13.52 ^c
Florida	46.58	0.19	30(28,33)	-1.36	Ohio	55.32 ^b	0.29	11(11,13)	17.14 ^c
Georgia	50.06 ^b	0.34	18(17,23)	6.01 ^c	Oklahoma	58.42 ^b	0.54	06(06,10)	23.71 ^c
Hawaii	33.46 ^b	0.66	49(48,50)	-29.14 ^c	Oregon	47.23	0.47	28(24,32)	0.02
Idaho	39.15 ^b	0.71	45(42,46)	-17.10 ^c	Pennsylvania	48.63 ^b	0.25	25(21,27)	2.98
Illinois	49.74 ^b	0.28	20(17,24)	5.32 ^c	Rhode Island	49.99	0.91	19(16,27)	5.86 ^c
Indiana	57.75 ^b	0.41	08(06,10)	22.30 ^c	South Carolina	53.32 ^b	0.46	14(12,17)	12.91 ^c
Iowa	47.75	0.52	27(22,31)	1.11	South Dakota	44.97	0.98	34(27,39)	-4.77
Kansas	48.92	0.57	23(18,28)	3.59	Tennessee	61.39 ^b	0.42	04(03,05)	30.00 ^c
Kentucky	70.92 ^b	0.55	01(01,01)	50.18 ^c	Texas	43.53 ^b	0.20	36(34,38)	-7.83 ^c
Louisiana	57.64 ^b	0.50	09(06,10)	22.06 ^c	Utah	20.41 ^b	0.45	51(51,51)	-56.79 ^c
Maine	53.77 ^b	0.80	13(11,17)	13.87 ^c	Vermont	49.53	1.16	21(15,31)	4.88
Maryland	46.41	0.40	31(27,34)	-1.72	Virginia	48.55 ^b	0.35	26(20,28)	2.81
Massachusetts	46.80	0.36	29(26,33)	-0.90	Washington	45.77 ^b	0.37	33(29,35)	-3.08
Michigan	52.17 ^b	0.31	16(14,18)	10.47 ^c	West Virginia	62.70 ^b	0.73	03(02,05)	32.77 ^c
Minnesota	41.56 ^b	0.39	42(37,44)	-11.98 ^c	Wisconsin	45.83 ^b	0.38	32(29,35)	-2.95
Mississippi	61.32 ^b	0.63	05(02,05)	29.86 ^c	Wyoming	39.62 ^b	1.19	44(37,46)	-16.10 ^c
Missouri	56.95 ^b	0.41	10(07,11)	20.60 ^c					



^a US Mortality Files, National Center for Health Statistics, Centers for Disease Control and Prevention. Rates are per 100,000 and are age-adjusted to the 2000 US Std Population (19 age groups - Census P25-1130).

^b Difference between state rate and total U.S. rate is statistically significant ($p \leq .0002$).

^c Absolute percent difference between state rate and total U.S. rate is 5% or more.

^d Rank of state level death rate and the 95% confidence intervals (low, high) for the rank.

SE Standard error of the rate.

PD Percent difference between state rate and total U.S. rate.

- Statistic not shown. Rate based on less than 16 cases for the time interval.

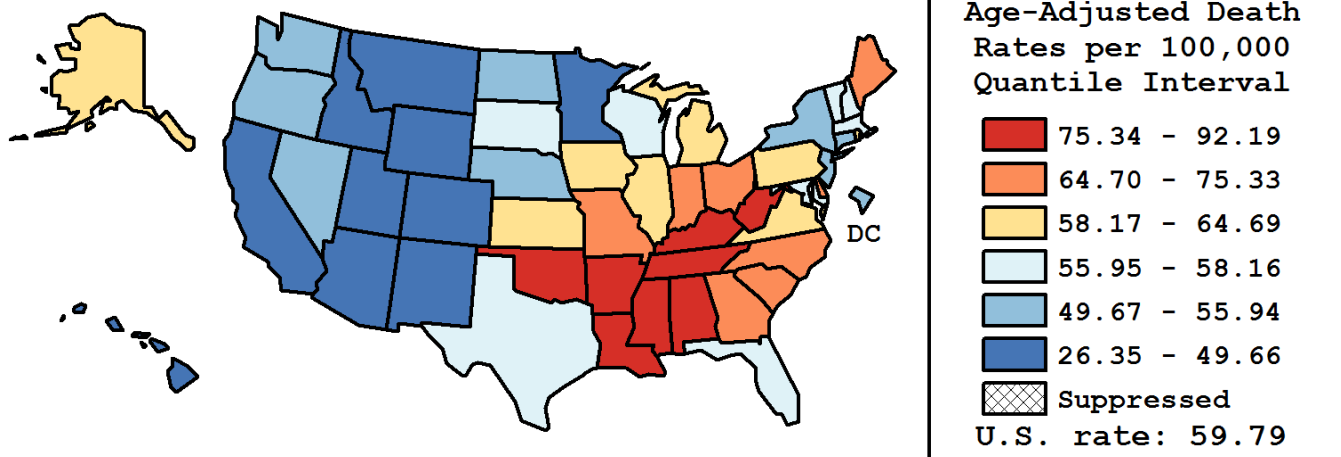
Table 15.25
Cancer of the Lung and Bronchus (Invasive)

Age-Adjusted Cancer Death^a Rates By State, All Races, 2008-2012

Males

State	Rate	SE	Rank(CI) ^d	PD
TOTAL U.S.	59.79	0.09		
High Five States				
Kentucky	92.19 ^b	0.96	01(01,02)	54.19 ^c
Mississippi	88.45 ^b	1.18	02(01,03)	47.94 ^c
Arkansas	88.00 ^b	1.10	03(01,03)	47.18 ^c
Tennessee	83.57 ^b	0.76	04(04,06)	39.77 ^c
Alabama	82.56 ^b	0.86	05(04,06)	38.09 ^c
Low Five States				
Hawaii	44.37 ^b	1.14	47(44,49)	-25.78 ^c
California	43.67 ^b	0.24	48(46,48)	-26.96 ^c
New Mexico	40.90 ^b	0.93	49(48,50)	-31.59 ^c
Colorado	40.75 ^b	0.65	50(48,50)	-31.84 ^c
Utah	26.35 ^b	0.76	51(51,51)	-55.93 ^c

State	Rate	SE	Rank(CI) ^d	PD	State	Rate	SE	Rank(CI) ^d	PD
Alabama	82.56 ^b	0.86	05(04,06)	38.09 ^c	Montana	49.66 ^b	1.37	42(37,46)	-16.94 ^c
Alaska	61.25	2.59	24(14,37)	2.44	Nebraska	55.46 ^b	1.13	34(25,38)	-7.24 ^c
Arizona	46.63 ^b	0.55	44(43,47)	-22.00 ^c	Nevada	55.94 ^b	0.99	33(25,38)	-6.44 ^c
Arkansas	88.00 ^b	1.10	03(01,03)	47.18 ^c	New Hampshire	57.71	1.35	27(23,37)	-3.47
California	43.67 ^b	0.24	48(46,48)	-26.96 ^c	New Jersey	52.05 ^b	0.51	39(37,41)	-12.95 ^c
Colorado	40.75 ^b	0.65	50(48,50)	-31.84 ^c	New Mexico	40.90 ^b	0.93	49(48,50)	-31.59 ^c
Connecticut	49.73 ^b	0.76	41(39,44)	-16.83 ^c	New York	51.94 ^b	0.34	40(37,41)	-13.13 ^c
Delaware	66.37 ^b	1.73	16(13,23)	11.01 ^c	North Carolina	72.03 ^b	0.59	12(10,13)	20.48 ^c
D.C.	54.60	2.19	36(23,43)	-8.68 ^c	North Dakota	53.31 ^b	1.76	38(25,43)	-10.84 ^c
Florida	58.11 ^b	0.32	26(24,30)	-2.82	Ohio	70.92 ^b	0.50	13(11,14)	18.62 ^c
Georgia	68.00 ^b	0.63	14(14,16)	13.73 ^c	Oklahoma	75.70 ^b	0.93	08(07,10)	26.61 ^c
Hawaii	44.37 ^b	1.14	47(44,49)	-25.78 ^c	Oregon	55.15 ^b	0.76	35(27,38)	-7.75 ^c
Idaho	45.86 ^b	1.14	46(43,48)	-23.30 ^c	Pennsylvania	62.44 ^b	0.43	20(17,24)	4.44
Illinois	62.40 ^b	0.47	21(17,24)	4.37	Rhode Island	62.52	1.56	18(15,26)	4.56
Indiana	75.33 ^b	0.72	09(07,10)	25.99 ^c	South Carolina	72.72 ^b	0.83	11(09,13)	21.62 ^c
Iowa	61.40	0.88	23(18,26)	2.69	South Dakota	58.16	1.67	25(18,37)	-2.72
Kansas	61.68	0.96	22(17,26)	3.16	Tennessee	83.57 ^b	0.76	04(04,06)	39.77 ^c
Kentucky	92.19 ^b	0.96	01(01,02)	54.19 ^c	Texas	56.44 ^b	0.35	30(26,35)	-5.60 ^c
Louisiana	77.40 ^b	0.90	07(06,09)	29.45 ^c	Utah	26.35 ^b	0.76	51(51,51)	-55.93 ^c
Maine	66.50 ^b	1.34	15(14,19)	11.23 ^c	Vermont	57.23	1.89	28(19,39)	-4.27
Maryland	57.07 ^b	0.69	29(24,35)	-4.54	Virginia	62.48 ^b	0.61	19(17,24)	4.51
Massachusetts	56.18 ^b	0.60	32(26,37)	-6.03 ^c	Washington	53.85 ^b	0.61	37(33,39)	-9.93 ^c
Michigan	64.69 ^b	0.52	17(15,19)	8.20 ^c	West Virginia	80.46 ^b	1.26	06(04,07)	34.57 ^c
Minnesota	49.66 ^b	0.64	43(40,44)	-16.94 ^c	Wisconsin	56.30 ^b	0.64	31(26,36)	-5.83 ^c
Mississippi	88.45 ^b	1.18	02(01,03)	47.94 ^c	Wyoming	46.47 ^b	1.91	45(39,49)	-22.28 ^c
Missouri	72.76 ^b	0.71	10(09,13)	21.70 ^c					



^a US Mortality Files, National Center for Health Statistics, Centers for Disease Control and Prevention. Rates are per 100,000 and are age-adjusted to the 2000 US Std Population (19 age groups - Census P25-1130).

^b Difference between state rate and total U.S. rate is statistically significant ($p \leq .0002$).

^c Absolute percent difference between state rate and total U.S. rate is 5% or more.

^d Rank of state level death rate and the 95% confidence intervals (low, high) for the rank.

SE Standard error of the rate.

PD Percent difference between state rate and total U.S. rate.

- Statistic not shown. Rate based on less than 16 cases for the time interval.

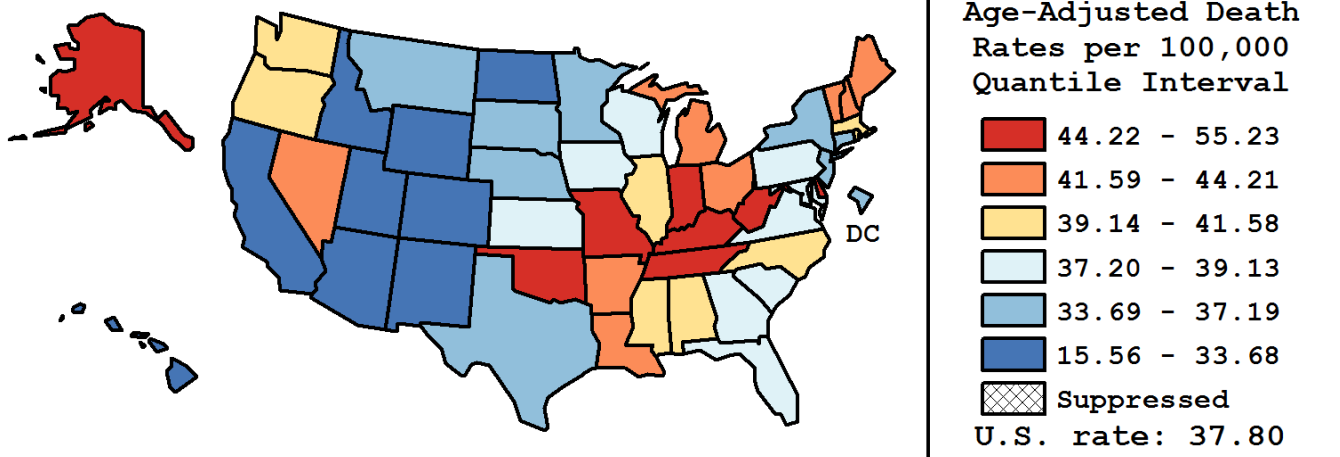
Table 15.26
Cancer of the Lung And Bronchus (Invasive)

Age-Adjusted Cancer Death^a Rates By State, All Races, 2008-2012

Females

State	Rate	SE	Rank(CI) ^d	PD
TOTAL U.S.	37.80	0.06		
High Five States				
Kentucky	55.23 ^b	0.65	01(01,01)	46.11 ^c
West Virginia	49.26 ^b	0.88	02(02,03)	30.32 ^c
Oklahoma	45.31 ^b	0.64	03(03,13)	19.86 ^c
Missouri	45.23 ^b	0.49	04(03,12)	19.65 ^c
Delaware	45.18 ^b	1.26	05(02,18)	19.53 ^c
Low Five States				
California	30.51 ^b	0.18	47(45,48)	-19.29 ^c
Colorado	29.72 ^b	0.49	48(46,49)	-21.38 ^c
New Mexico	27.21 ^b	0.68	49(48,50)	-28.01 ^c
Hawaii	24.98 ^b	0.77	50(49,50)	-33.92 ^c
Utah	15.56 ^b	0.53	51(51,51)	-58.83 ^c

State	Rate	SE	Rank(CI) ^d	PD	State	Rate	SE	Rank(CI) ^d	PD
Alabama	40.13 ^b	0.52	22(17,28)	6.18	Montana	37.19	1.09	34(21,42)	-1.61
Alaska	44.81	1.98	07(02,25)	18.55 ^c	Nebraska	35.53	0.81	37(30,44)	-5.99
Arizona	31.89 ^b	0.41	45(43,46)	-15.64 ^c	Nevada	44.11 ^b	0.81	10(03,17)	16.69 ^c
Arkansas	44.21 ^b	0.70	09(03,17)	16.96 ^c	New Hampshire	42.14 ^b	1.03	16(05,25)	11.49 ^c
California	30.51 ^b	0.18	47(45,48)	-19.29 ^c	New Jersey	35.26 ^b	0.36	38(34,42)	-6.72
Colorado	29.72 ^b	0.49	48(46,49)	-21.38 ^c	New Mexico	27.21 ^b	0.68	49(48,50)	-28.01 ^c
Connecticut	35.82 ^b	0.56	35(32,42)	-5.25	New York	35.11 ^b	0.24	39(35,42)	-7.12
Delaware	45.18 ^b	1.26	05(02,18)	19.53 ^c	North Carolina	39.15 ^b	0.37	24(21,31)	3.57
D.C.	33.91	1.44	41(29,48)	-10.29 ^c	North Dakota	31.77 ^b	1.24	46(37,48)	-15.94 ^c
Florida	37.26	0.23	32(29,35)	-1.42	Ohio	43.80 ^b	0.35	12(06,15)	15.87 ^c
Georgia	37.23	0.39	33(28,36)	-1.52	Oklahoma	45.31 ^b	0.64	03(03,13)	19.86 ^c
Hawaii	24.98 ^b	0.77	50(49,50)	-33.92 ^c	Oregon	41.18 ^b	0.60	19(14,24)	8.94
Idaho	33.63 ^b	0.90	44(35,46)	-11.04 ^c	Pennsylvania	38.72	0.30	27(23,31)	2.43
Illinois	40.72 ^b	0.33	20(16,23)	7.73	Rhode Island	41.58	1.11	17(06,29)	10.00 ^c
Indiana	44.72 ^b	0.49	08(03,13)	18.29 ^c	South Carolina	38.93	0.53	26(20,32)	2.99
Iowa	37.49	0.62	31(24,37)	-0.82	South Dakota	35.04	1.18	40(28,46)	-7.31
Kansas	39.13	0.68	25(18,33)	3.51	Tennessee	45.11 ^b	0.48	06(03,12)	19.33 ^c
Kentucky	55.23 ^b	0.65	01(01,01)	46.11 ^c	Texas	33.71 ^b	0.24	42(40,45)	-10.81 ^c
Louisiana	42.84 ^b	0.58	14(08,19)	13.34 ^c	Utah	15.56 ^b	0.53	51(51,51)	-58.83 ^c
Maine	44.11 ^b	0.98	11(03,18)	16.68 ^c	Vermont	43.79 ^b	1.48	13(03,24)	15.85 ^c
Maryland	38.63	0.49	28(21,33)	2.20	Virginia	38.19	0.41	29(24,34)	1.03
Massachusetts	40.31 ^b	0.44	21(17,26)	6.63	Washington	39.70 ^b	0.47	23(18,30)	5.02
Michigan	42.84 ^b	0.38	15(10,18)	13.34 ^c	West Virginia	49.26 ^b	0.88	02(02,03)	30.32 ^c
Minnesota	35.60 ^b	0.49	36(33,42)	-5.81	Wisconsin	38.13	0.47	30(23,35)	0.86
Mississippi	41.40 ^b	0.69	18(12,24)	9.52	Wyoming	33.68	1.50	43(30,48)	-10.89 ^c
Missouri	45.23 ^b	0.49	04(03,12)	19.65 ^c					



^a US Mortality Files, National Center for Health Statistics, Centers for Disease Control and Prevention. Rates are per 100,000 and are age-adjusted to the 2000 US Std Population (19 age groups - Census P25-1130).

^b Difference between state rate and total U.S. rate is statistically significant ($p \leq .0002$).

^c Absolute percent difference between state rate and total U.S. rate is 5% or more.

^d Rank of state level death rate and the 95% confidence intervals (low, high) for the rank.

SE Standard error of the rate.

PD Percent difference between state rate and total U.S. rate.

- Statistic not shown. Rate based on less than 16 cases for the time interval.

Table 15.27
Cancer of the Lung And Bronchus (Invasive)

Estimated United States Cancer Prevalence Counts^a on January 1, 2012
By Race/Ethnicity, Sex and Years Since Diagnosis

Years Since Diagnosis		0 to <5	5 to <10	10 to <15	15 to <20	20 to <25	25 to <30	0 to <20 ^e	0 to <37 ^e	>=37 ^g	Complete ^h
<u>Race</u>	<u>Sex</u>										
All Races ^b	Both Sexes	233,827	80,267	42,112	23,166	12,241	6,603	385,066	402,326	6,482	408,808
	Males	107,351	34,954	17,903	10,199	5,280	2,905	172,829	180,530	3,700	184,230
	Females	126,476	45,313	24,209	12,967	6,961	3,698	212,237	221,796	2,782	224,578
White ^b	Both Sexes	197,170	69,783	36,974	20,131	10,983	5,734	329,144	344,368	2,551	346,919
	Males	90,128	29,757	15,541	8,709	4,643	2,518	146,275	152,955	1,180	154,135
	Females	107,042	40,026	21,433	11,422	6,340	3,216	182,869	191,413	1,371	192,784
Black ^b	Both Sexes	26,406	7,618	3,738	2,242	891	693	40,454	41,975	229	42,204
	Males	12,146	3,790	1,628	1,046	458	301	18,809	19,582	114	19,696
	Females	14,260	3,828	2,110	1,196	433	392	21,645	22,393	115	22,508
Asian/ Pacific Islander ^c	Both Sexes	7,914	2,119	1,072	+	+	+	11,640	+	+	+
	Males	3,940	1,016	542	+	+	+	5,806	+	+	+
	Females	3,974	1,103	530	+	+	+	5,834	+	+	+
Hispanic ^d	Both Sexes	9,212	2,741	1,427	+	+	+	14,092	+	+	+
	Males	4,247	1,256	609	+	+	+	6,468	+	+	+
	Females	4,965	1,485	818	+	+	+	7,624	+	+	+

Estimated prevalence percent^a on January 1, 2012, of the SEER^c population diagnosed in the previous 20 years
By Age at Prevalence, Race/Ethnicity and Sex

Age at Prevalence	Race	Sex	Age Specific (Crude)								Age-Adjusted ^f		
			All Ages	0-9	10-19	20-29	30-39	40-49	50-59	60-69	70-79	80+	All Ages
	All Races ^c	Both Sexes	0.1031%	0.0002%	0.0004%	0.0018%	0.0058%	0.0243%	0.1087%	0.3206%	0.6462%	0.6341%	0.1004%
		Males	0.0947%	0.0002%	0.0003%	0.0019%	0.0053%	0.0217%	0.1009%	0.3252%	0.6558%	0.7040%	0.1022%
		Females	0.1114%	-	0.0004%	0.0018%	0.0063%	0.0268%	0.1161%	0.3165%	0.6385%	0.5927%	0.0997%
	White ^c	Both Sexes	0.1113%	0.0002%	0.0004%	0.0021%	0.0062%	0.0241%	0.1066%	0.3252%	0.6728%	0.6532%	0.1028%
		Males	0.0993%	-	0.0003%	0.0020%	0.0052%	0.0217%	0.0975%	0.3195%	0.6584%	0.7030%	0.1014%
		Females	0.1232%	-	0.0005%	0.0021%	0.0072%	0.0266%	0.1156%	0.3305%	0.6848%	0.6234%	0.1046%
	Black ^c	Both Sexes	0.0900%	-	-	0.0021%	0.0059%	0.0298%	0.1561%	0.4044%	0.6765%	0.5118%	0.1106%
		Males	0.0883%	-	-	0.0024%	0.0076%	0.0256%	0.1533%	0.4567%	0.7597%	0.6697%	0.1241%
		Females	0.0915%	-	-	0.0018%	0.0044%	0.0336%	0.1586%	0.3633%	0.6182%	0.4352%	0.1020%
	Asian/ Pacific Islander ^c	Both Sexes	0.0781%	-	-	-	0.0043%	0.0216%	0.0851%	0.2389%	0.4937%	0.5748%	0.0799%
		Males	0.0812%	-	-	-	0.0039%	0.0203%	0.0836%	0.2730%	0.5930%	0.7189%	0.0928%
		Females	0.0754%	-	-	-	0.0046%	0.0228%	0.0864%	0.2108%	0.4169%	0.4868%	0.0707%
	Hispanic ^d	Both Sexes	0.0276%	-	-	0.0016%	0.0037%	0.0137%	0.0471%	0.1476%	0.3289%	0.3576%	0.0508%
		Males	0.0249%	-	-	0.0014%	0.0033%	0.0129%	0.0463%	0.1509%	0.3366%	0.4114%	0.0533%
		Females	0.0305%	-	-	0.0019%	0.0041%	0.0145%	0.0478%	0.1448%	0.3232%	0.3254%	0.0492%

^a US 2012 cancer prevalence counts are based on 2012 cancer prevalence proportions from the SEER registries and 1/1/2012 US population estimates based on the average of 2011 and 2012 population estimates from the US Bureau of the Census. Prevalence was calculated using the First Malignant Primary Only for a person.

^{b c d} Statistics based on (b) SEER 9 Areas (c) SEER 11 Areas and Rural Georgia (d) NHIA for Hispanic for SEER 11 Areas and Rural Georgia.

^e Maximum limited-duration prevalence: 37 years for 1975-2012 SEER 9 data; 20 years for 1992-2012 SEER 11 data (used to calculate prevalence for Hispanics and Asian Pacific Islanders).

^f Percentages are age-adjusted to the 2000 US Standard Population (19 age groups - Census P25-1130) by 5-year age groups.

^{g h i} (g) Cases diagnosed more than 37 years ago were estimated using the completeness index method (Capocaccia et. al. 1997, Merrill et. al. 2000). (h) Complete prevalence is obtained by summing 0 to <37 and >=37. (i) Age-specific completeness index was approximated using empirical data from historical Connecticut tumor registry.

- Statistic not shown. Statistic based on fewer than 5 cases estimated alive in SEER for the time interval.

+ Not available.

Table 15.28

Cancer of the Lung and Bronchus (Invasive)

Percent Distribution and Counts by Histology among Histologically Confirmed Cases, 2008-2012
Both Sexes by Race

Histology ^a	All Races			White		Black		Asian/Pacific Islander		American Indian/Alaska Native ^b		Hispanic ^c	
	Rate	Count	Percent	Count	Percent	Count	Percent	Count	Percent	Count	Percent	Count	Percent
Carcinoma	51.9	226,896	99.7%	186,528	99.7%	25,544	99.7%	13,248	99.7%	774	99.1%	12,809	99.4%
Small cell (8002,8041-8045)	6.8	30,156	13.3%	26,229	14.0%	2,660	10.4%	1,038	7.8%	141	18.1%	1,430	11.1%
Non-small cell	43.5	189,727	83.4%	154,665	82.7%	21,991	85.8%	11,775	88.6%	608	77.8%	10,843	84.2%
Squamous and transitional cell ^d	11.9	51,375	22.6%	42,831	22.9%	6,133	23.9%	2,059	15.5%	194	24.8%	2,393	18.6%
Adenocarcinoma ^e	22.5	98,473	43.3%	79,151	42.3%	10,976	42.8%	7,720	58.1%	260	33.3%	5,987	46.5%
Large cell ^f	1.1	4,672	2.1%	3,817	2.0%	635	2.5%	197	1.5%	-	-	228	1.8%
Non-small cell carcinoma ^g	5.5	23,952	10.5%	19,243	10.3%	3,178	12.4%	1,318	9.9%	118	15.1%	1,375	10.7%
Other specified carcinomas ^h	2.6	11,255	4.9%	9,623	5.1%	1,069	4.2%	481	3.6%	25	3.2%	860	6.7%
Carcinoma, NOS ⁱ	1.6	7,013	3.1%	5,634	3.0%	893	3.5%	435	3.3%	25	3.2%	536	4.2%
Sarcoma ^j	0.1	433	0.2%	353	0.2%	47	0.2%	24	0.2%	-	-	52	0.4%
Other specified types ^k	0.0	198	0.1%	160	0.1%	27	0.1%	-	-	-	-	22	0.2%
Total	52.0	227,527	100.0%	187,041	100.0%	25,618	100.0%	13,283	100.0%	781	100.0%	12,883	100.0%

Source: SEER 18 areas (San Francisco, Connecticut, Detroit, Hawaii, Iowa, New Mexico, Seattle, Utah, Atlanta, San Jose-Monterey, Los Angeles, Alaska Native Registry, Rural Georgia, California excluding SF/SJM/LA, Kentucky, Louisiana, New Jersey and Georgia excluding ATL/RG).

Percents may not sum to 100 due to rounding.

^a Excludes Kaposi Sarcoma, mesothelioma, lymphomas, leukemias, myelomas, lymphoreticular, and immunoproliferative diseases.

^b Estimates for American Indian/Alaska Native are based on the CHSDA (Contract Health Service Delivery Area) counties.

^c Hispanic is not mutually exclusive from whites, blacks, Asian/Pacific Islanders, and American Indians/Alaska Natives.

Underlying incidence data for Hispanics are based on NHIA and exclude cases from the Alaska Native Registry.

^d Squamous and transitional cell includes histologies 8051-8052, 8070-8076, 8078, 8083-8084, 8090, 8094, 8120, 8123.

^e Adenocarcinoma includes histologies 8015, 8050, 8140-8141, 8143-8145, 8147, 8190, 8201, 8211, 8250-8255, 8260, 8290, 8310, 8320, 8323, 8333, 8401, 8440, 8470-8471, 8480-8481, 8490, 8503, 8507, 8550, 8570-8572, 8574, 8576.

^f Large cell includes histologies 8012-8014, 8021, 8034, 8082.

^g Non-small cell carcinoma includes histology 8046.

^h Other specified carcinomas includes histologies 8003-8004, 8022, 8030, 8031-8033, 8035, 8200, 8240-8241, 8243-8246, 8249, 8430, 8525, 8560, 8562, 8575.

ⁱ Carcinoma, NOS includes histologies 8000-8001, 8010-8011, 8020, 8230.

^j Sarcoma includes histologies 8680, 8711, 8800-8805, 8810-8811, 8815, 8824, 8830, 8840, 8852, 8855, 8890-8891, 8894-8895, 8900-8902, 8910, 8920-8921, 8940, 8990, 9040-9041, 9043, 9120, 9130, 9133, 9150, 9180, 9220, 9231, 9240, 9251, 9473, 9540, 9560, 9580.

^k Other specific types includes melanomas and is defined as histologies 8580, 8650, 8720-8790, 8933, 8963, 8972-8973, 8980-8982, 9064-9065, 9070, 9080, 9084-9085, 9100, 9260, 9364, 9503, 9530.

Note: For this analysis, the following histologies were classified as metastases of another primary site and not included: 8005, 8130, 8146, 8170, 8231, 8247, 8263, 8312, 8340-8341, 8350, 8441, 8460, 8500-8501, 8524, 8530, 8551, 8581, 8585, 8710, 8772, 8806, 8850, 8854, 8896, 8935, 9015, 9042, 9071, 9101, 9181, 9370, 9500, 9561, 9581

- Statistic not shown due to fewer than 16 cases during the time period.

Table 15.29

Cancer of the Lung and Bronchus (Invasive)

Percent Distribution and Counts by Histology among Histologically Confirmed Cases, 2008-2012
Males by Race

Histology ^a	All Races			White		Black		Asian/Pacific Islander		American Indian/Alaska Native ^b		Hispanic ^c	
	Rate	Count	Percent	Count	Percent	Count	Percent	Count	Percent	Count	Percent	Count	Percent
Carcinoma	61.7	120,021	99.7%	97,398	99.7%	14,323	99.7%	7,457	99.7%	401	99.5%	6,749	99.4%
Small cell (8002,8041-8045)	7.5	15,056	12.5%	12,917	13.2%	1,353	9.4%	682	9.1%	64	15.9%	754	11.1%
Non-small cell	52.1	101,018	83.9%	81,392	83.3%	12,413	86.4%	6,503	87.0%	326	80.9%	5,681	83.6%
Squamous and transitional cell ^d	16.8	32,229	26.8%	26,568	27.2%	3,934	27.4%	1,494	20.0%	117	29.0%	1,514	22.3%
Adenocarcinoma ^e	24.4	47,518	39.5%	37,692	38.6%	5,726	39.9%	3,790	50.7%	125	31.0%	2,827	41.6%
Large cell ^f	1.3	2,631	2.2%	2,125	2.2%	370	2.6%	124	1.7%	-	-	139	2.0%
Non-small cell carcinoma ^g	6.9	13,474	11.2%	10,681	10.9%	1,847	12.9%	829	11.1%	68	16.9%	799	11.8%
Other specified carcinomas ^h	2.6	5,166	4.3%	4,326	4.4%	536	3.7%	266	3.6%	-	-	402	5.9%
Carcinoma, NOS ⁱ	2.1	3,947	3.3%	3,089	3.2%	557	3.9%	272	3.6%	-	-	314	4.6%
Sarcoma ^j	0.1	239	0.2%	200	0.2%	25	0.2%	-	-	-	-	28	0.4%
Other specified types ^k	0.1	126	0.1%	105	0.1%	-	-	-	-	-	-	-	-
Total	61.9	120,386	100.0%	97,703	100.0%	14,361	100.0%	7,476	100.0%	403	100.0%	6,792	100.0%

Source: SEER 18 areas (San Francisco, Connecticut, Detroit, Hawaii, Iowa, New Mexico, Seattle, Utah, Atlanta, San Jose-Monterey, Los Angeles, Alaska Native Registry, Rural Georgia, California excluding SF/SJM/LA, Kentucky, Louisiana, New Jersey and Georgia excluding ATL/RG).

Percentages may not sum to 100 due to rounding.

^a Excludes Kaposi Sarcoma, mesothelioma, lymphomas, leukemias, myelomas, lymphoreticular, and immunoproliferative diseases.

^b Estimates for American Indian/Alaska Native are based on the CHSDA (Contract Health Service Delivery Area) counties.

^c Hispanic is not mutually exclusive from whites, blacks, Asian/Pacific Islanders, and American Indians/Alaska Natives.

^d Underlying incidence data for Hispanics are based on NHIA and exclude cases from the Alaska Native Registry.

^e Squamous and transitional cell includes histologies 8051-8052, 8070-8076, 8078, 8083-8084, 8090, 8094, 8120, 8123.

^f Adenocarcinoma includes histologies 8015, 8050, 8140-8141, 8143-8145, 8147, 8190, 8201, 8211, 8250-8255, 8260, 8290, 8310, 8320, 8323, 8333, 8401, 8440, 8470-8471, 8480-8481, 8490, 8503, 8507, 8550, 8570-8572, 8574, 8576.

^g Large cell includes histologies 8012-8014, 8021, 8034, 8082.

^h Non-small cell carcinoma includes histology 8046.

ⁱ Other specified carcinomas includes histologies 8003-8004, 8022, 8030, 8031-8033, 8035, 8200, 8240-8241, 8243-8246, 8249, 8430, 8525, 8560, 8562, 8575.

^j Carcinoma, NOS includes histologies 8000-8001, 8010-8011, 8020, 8230.

^k Sarcoma includes histologies 8680, 8711, 8800-8805, 8810-8811, 8815, 8824, 8830, 8840, 8852, 8855, 8890-8891, 8894-8895, 8900-8902, 8910, 8920-8921, 8940, 8990, 9040-9041, 9043, 9120, 9130, 9133, 9150, 9180, 9220, 9231, 9240, 9251, 9473, 9540, 9560, 9580.

^k Other specific types includes melanomas and is defined as histologies 8580, 8650, 8720-8790, 8933, 8963, 8972-8973, 8980-8982, 9064-9065, 9070, 9080, 9084-9085, 9100, 9260, 9364, 9503, 9530.

Note: For this analysis, the following histologies were classified as metastases of another primary site and not included: 8005, 8130, 8146, 8170, 8231, 8247, 8263, 8312, 8340-8341, 8350, 8441, 8460, 8500-8501, 8524, 8530, 8551, 8581, 8585, 8710, 8772, 8806, 8850, 8854, 8896, 8935, 9015, 9042, 9071, 9101, 9181, 9370, 9500, 9561, 9581

- Statistic not shown due to fewer than 16 cases during the time period.

Table 15.30

Cancer of the Lung and Bronchus (Invasive)

Percent Distribution and Counts by Histology among Histologically Confirmed Cases, 2008-2012
Females by Race

Histology ^a	All Races			White		Black		Asian/Pacific Islander		American Indian/Alaska Native ^b		Hispanic ^c	
	Rate	Count	Percent	Count	Percent	Count	Percent	Count	Percent	Count	Percent	Count	Percent
Carcinoma	44.5	106,875	99.8%	89,130	99.8%	11,221	99.7%	5,791	99.7%	373	98.7%	6,060	99.5%
Small cell (8002,8041-8045)	6.2	15,100	14.1%	13,312	14.9%	1,307	11.6%	356	6.1%	77	20.4%	676	11.1%
Non-small cell	37.0	88,709	82.8%	73,273	82.0%	9,578	85.1%	5,272	90.8%	282	74.6%	5,162	84.7%
Squamous and transitional cell ^d	8.1	19,146	17.9%	16,263	18.2%	2,199	19.5%	565	9.7%	77	20.4%	879	14.4%
Adenocarcinoma ^e	21.2	50,955	47.6%	41,459	46.4%	5,250	46.6%	3,930	67.7%	135	35.7%	3,160	51.9%
Large cell ^f	0.8	2,041	1.9%	1,692	1.9%	265	2.4%	73	1.3%	-	-	89	1.5%
Non-small cell carcinoma ^g	4.4	10,478	9.8%	8,562	9.6%	1,331	11.8%	489	8.4%	50	13.2%	576	9.5%
Other specified carcinomas ^h	2.6	6,089	5.7%	5,297	5.9%	533	4.7%	215	3.7%	-	-	458	7.5%
Carcinoma, NOS ⁱ	1.3	3,066	2.9%	2,545	2.8%	336	3.0%	163	2.8%	-	-	222	3.6%
Sarcoma ^j	0.1	194	0.2%	153	0.2%	22	0.2%	-	-	-	-	24	0.4%
Other specified types ^k	0.0	72	0.1%	55	0.1%	-	-	-	-	-	-	-	-
Total	44.6	107,141	100.0%	89,338	100.0%	11,257	100.0%	5,807	100.0%	378	100.0%	6,091	100.0%

Source: SEER 18 areas (San Francisco, Connecticut, Detroit, Hawaii, Iowa, New Mexico, Seattle, Utah, Atlanta, San Jose-Monterey, Los Angeles, Alaska Native Registry, Rural Georgia, California excluding SF/SJM/LA, Kentucky, Louisiana, New Jersey and Georgia excluding ATL/RG).

Percentages may not sum to 100 due to rounding.

^a Excludes Kaposi Sarcoma, mesothelioma, lymphomas, leukemias, myelomas, lymphoreticular, and immunoproliferative diseases.

^b Estimates for American Indian/Alaska Native are based on the CHSDA (Contract Health Service Delivery Area) counties.

^c Hispanic is not mutually exclusive from whites, blacks, Asian/Pacific Islanders, and American Indians/Alaska Natives.

^d Underlying incidence data for Hispanics are based on NHIA and exclude cases from the Alaska Native Registry.

^e Squamous and transitional cell includes histologies 8051-8052, 8070-8076, 8078, 8083-8084, 8090, 8094, 8120, 8123.

^f Adenocarcinoma includes histologies 8015, 8050, 8140-8141, 8143-8145, 8147, 8190, 8201, 8211, 8250-8255, 8260, 8290, 8310, 8320, 8323, 8333, 8401, 8440, 8470-8471, 8480-8481, 8490, 8503, 8507, 8550, 8570-8572, 8574, 8576.

^g Large cell includes histologies 8012-8014, 8021, 8034, 8082.

^h Non-small cell carcinoma includes histology 8046.

ⁱ Other specified carcinomas includes histologies 8003-8004, 8022, 8030, 8031-8033, 8035, 8200, 8240-8241, 8243-8246, 8249, 8430, 8525, 8560, 8562, 8575.

^j Carcinoma, NOS includes histologies 8000-8001, 8010-8011, 8020, 8230.

^k Sarcoma includes histologies 8680, 8711, 8800-8805, 8810-8811, 8815, 8824, 8830, 8840, 8852, 8855, 8890-8891, 8894-8895, 8900-8902, 8910, 8920-8921, 8940, 8990, 9040-9041, 9043, 9120, 9130, 9133, 9150, 9180, 9220, 9231, 9240, 9251, 9473, 9540, 9560, 9580.

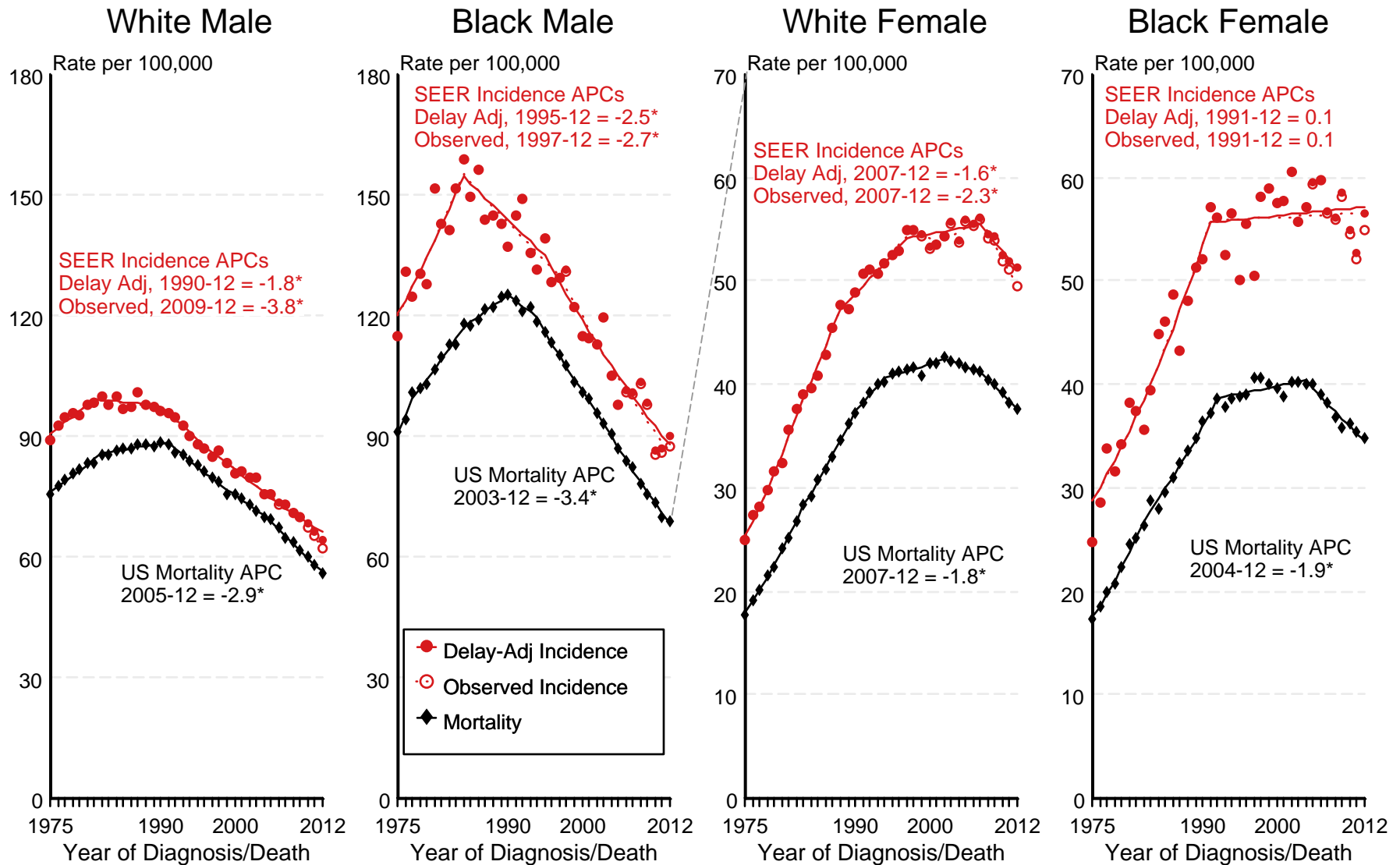
^k Other specific types includes melanomas and is defined as histologies 8580, 8650, 8720-8790, 8933, 8963, 8972-8973, 8980-8982, 9064-9065, 9070, 9080, 9084-9085, 9100, 9260, 9364, 9503, 9530.

Note: For this analysis, the following histologies were classified as metastases of another primary site and not included: 8005, 8130, 8146, 8170, 8231, 8247, 8263, 8312, 8340-8341, 8350, 8441, 8460, 8500-8501, 8524, 8530, 8551, 8581, 8585, 8710, 8772, 8806, 8850, 8854, 8896, 8935, 9015, 9042, 9071, 9101, 9181, 9370, 9500, 9561, 9581

- Statistic not shown due to fewer than 16 cases during the time period.

Figure 15.1

SEER Observed Incidence, SEER Delay Adjusted Incidence and US Death Rates^a Cancer of the Lung and Bronchus, by Race and Sex



Source: SEER 9 areas and US Mortality Files (National Center for Health Statistics, CDC).

^a Rates are age-adjusted to the 2000 US Std Population (19 age groups - Census P25-1103).

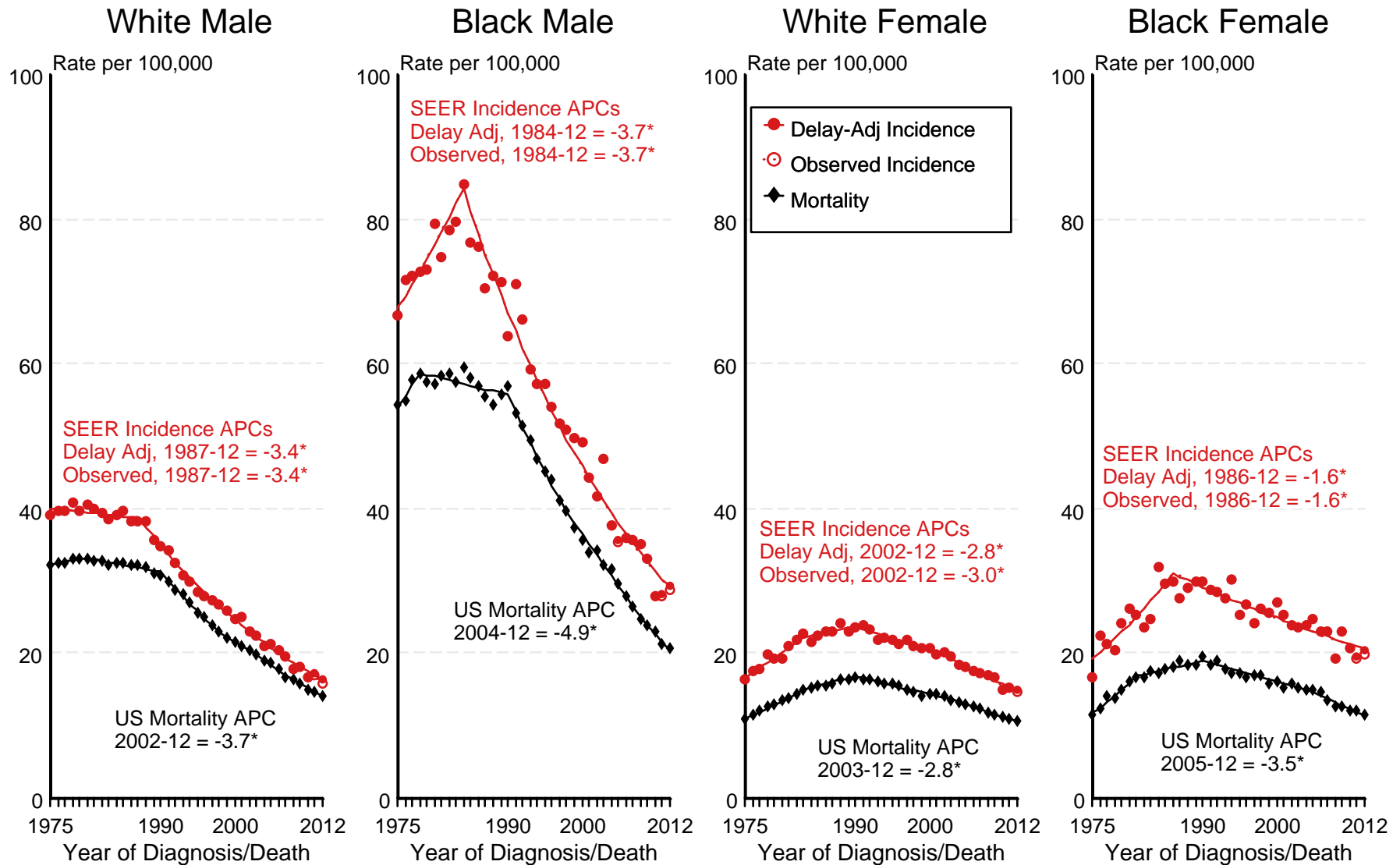
Regression lines and APCs are calculated using the Joinpoint Regression Program Version 4.2.0, April 2015, National Cancer Institute.

The APC is the Annual Percent Change for the regression line segments. The APC shown on the graph is for the most recent trend.

* The APC is significantly different from zero ($p < 0.05$).

Figure 15.2

SEER Observed Incidence, SEER Delay Adjusted Incidence and US Death Rates^a Cancer of the Lung and Bronchus, Under 65 Years of Age, by Race and Sex



Source: SEER 9 areas and US Mortality Files (National Center for Health Statistics, CDC).

^a Rates are age-adjusted to the 2000 US Std Population (19 age groups - Census P25-1103).

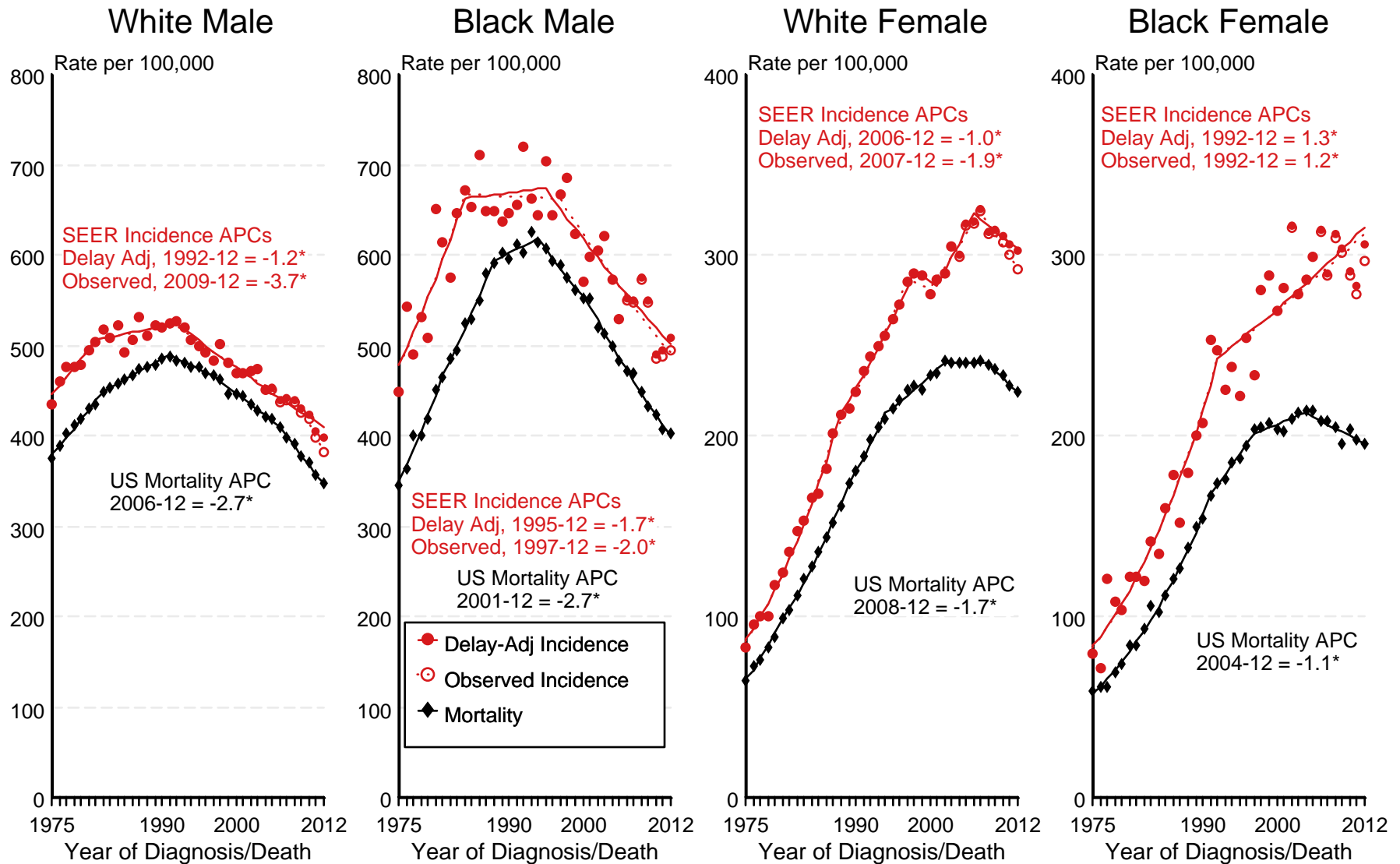
Regression lines and APCs are calculated using the Joinpoint Regression Program Version 4.2.0, April 2015, National Cancer Institute.

The APC is the Annual Percent Change for the regression line segments. The APC shown on the graph is for the most recent trend.

* The APC is significantly different from zero ($p < 0.05$).

Figure 15.3

SEER Observed Incidence, SEER Delay Adjusted Incidence and US Death Rates^a Cancer of the Lung and Bronchus, Ages 65 and Over, by Race and Sex



Source: SEER 9 areas and US Mortality Files (National Center for Health Statistics, CDC).

^a Rates are age-adjusted to the 2000 US Std Population (19 age groups - Census P25-1103).

Regression lines and APCs are calculated using the Joinpoint Regression Program Version 4.2.0, April 2015, National Cancer Institute.

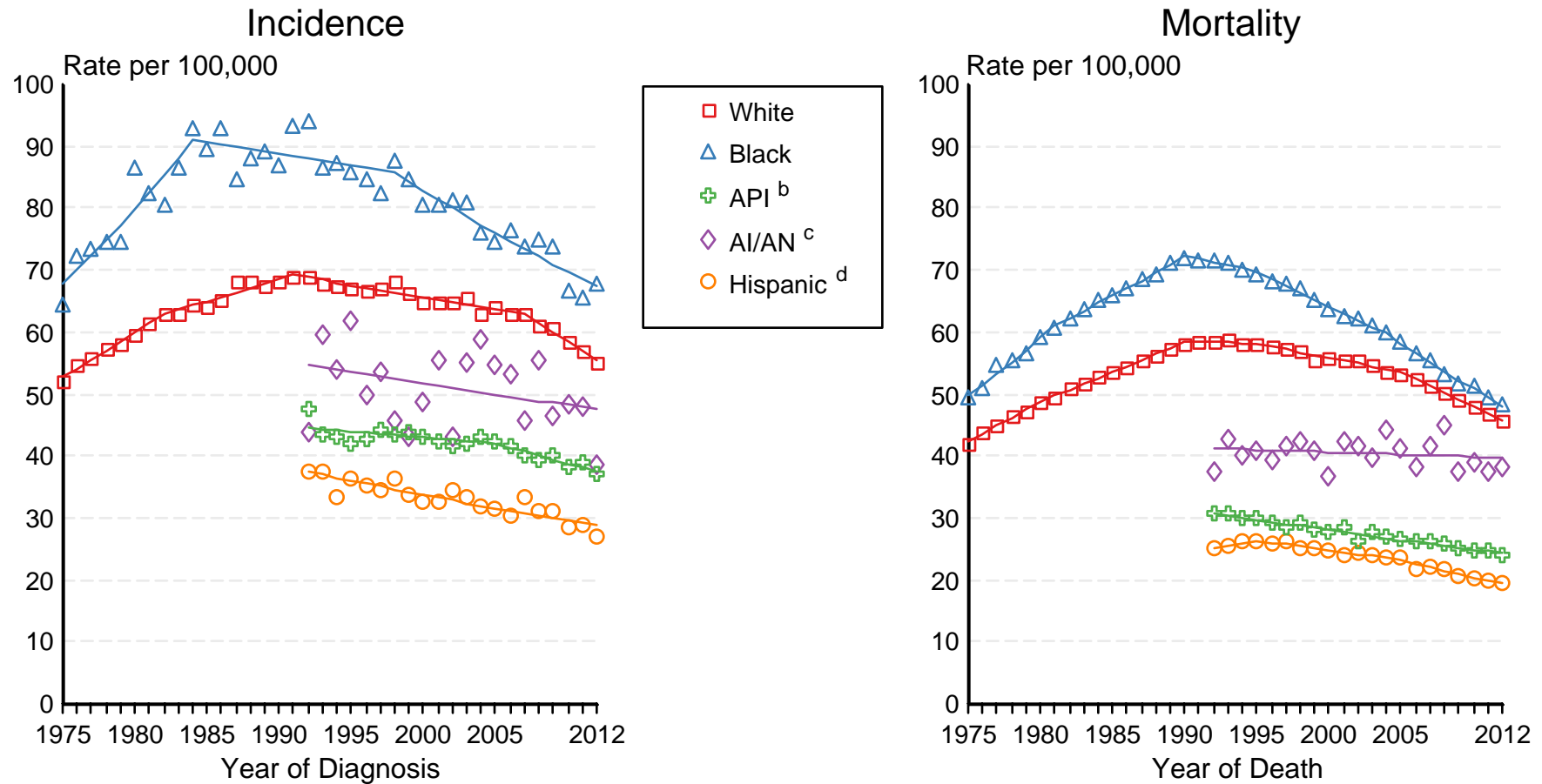
The APC is the Annual Percent Change for the regression line segments. The APC shown on the graph is for the most recent trend.

* The APC is significantly different from zero ($p < 0.05$).

Figure 15.4

SEER Incidence and US Death Rates^a Cancer of the Lung and Bronchus, Both Sexes

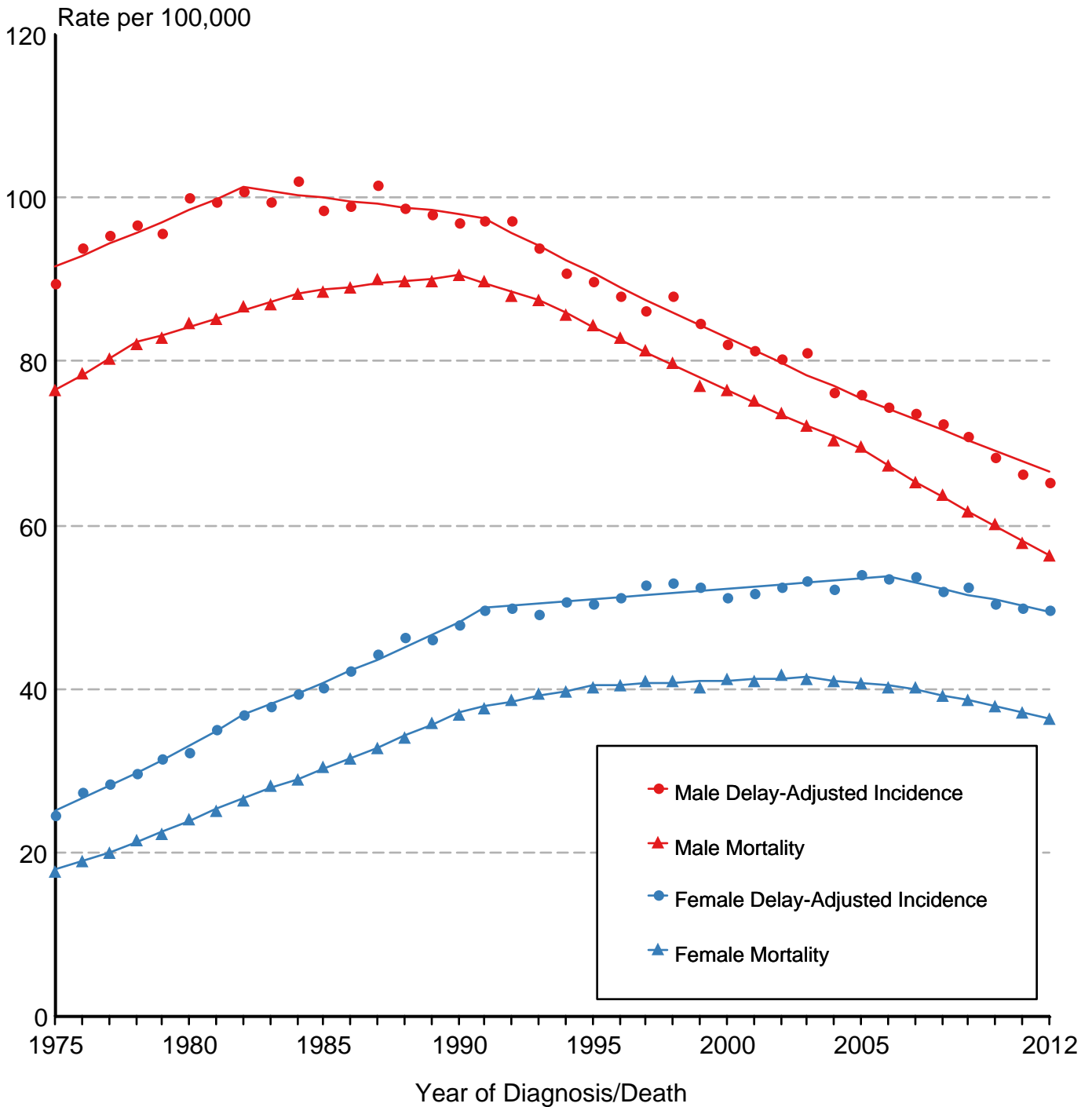
Joinpoint Analyses for Whites and Blacks from 1975-2012
and for Asian/Pacific Islanders, American Indians/Alaska Natives and Hispanics from 1992-2012



Source: Incidence data for whites and blacks are from the SEER 9 areas (San Francisco, Connecticut, Detroit, Hawaii, Iowa, New Mexico, Seattle, Utah, Atlanta). Incidence data for Asian/Pacific Islanders, American Indians/Alaska Natives and Hispanics are from the SEER 13 Areas (SEER 9 Areas, San Jose-Monterey, Los Angeles, Alaska Native Registry and Rural Georgia). Mortality data are from US Mortality Files, National Center for Health Statistics, CDC.

- ^a Rates are age-adjusted to the 2000 US Std Population (19 age groups - Census P25-1103). Regression lines are calculated using the Joinpoint Regression Program Version 4.2.0, April 2015, National Cancer Institute. Joinpoint analyses for Whites and Blacks during the 1975-2012 period allow a maximum of 5 joinpoints. Analyses for other ethnic groups during the period 1992-2012 allow a maximum of 3 joinpoints.
- ^b API = Asian/Pacific Islander.
- ^c AI/AN = American Indian/Alaska Native. Rates for American Indian/Alaska Native are based on the CHSDA(Contract Health Service Delivery Area) counties.
- ^d Hispanic is not mutually exclusive from whites, blacks, Asian/Pacific Islanders, and American Indians/Alaska Natives. Incidence data for Hispanics are based on NHIA and exclude cases from the Alaska Native Registry. Mortality data for Hispanics exclude cases from New Hampshire and Oklahoma.

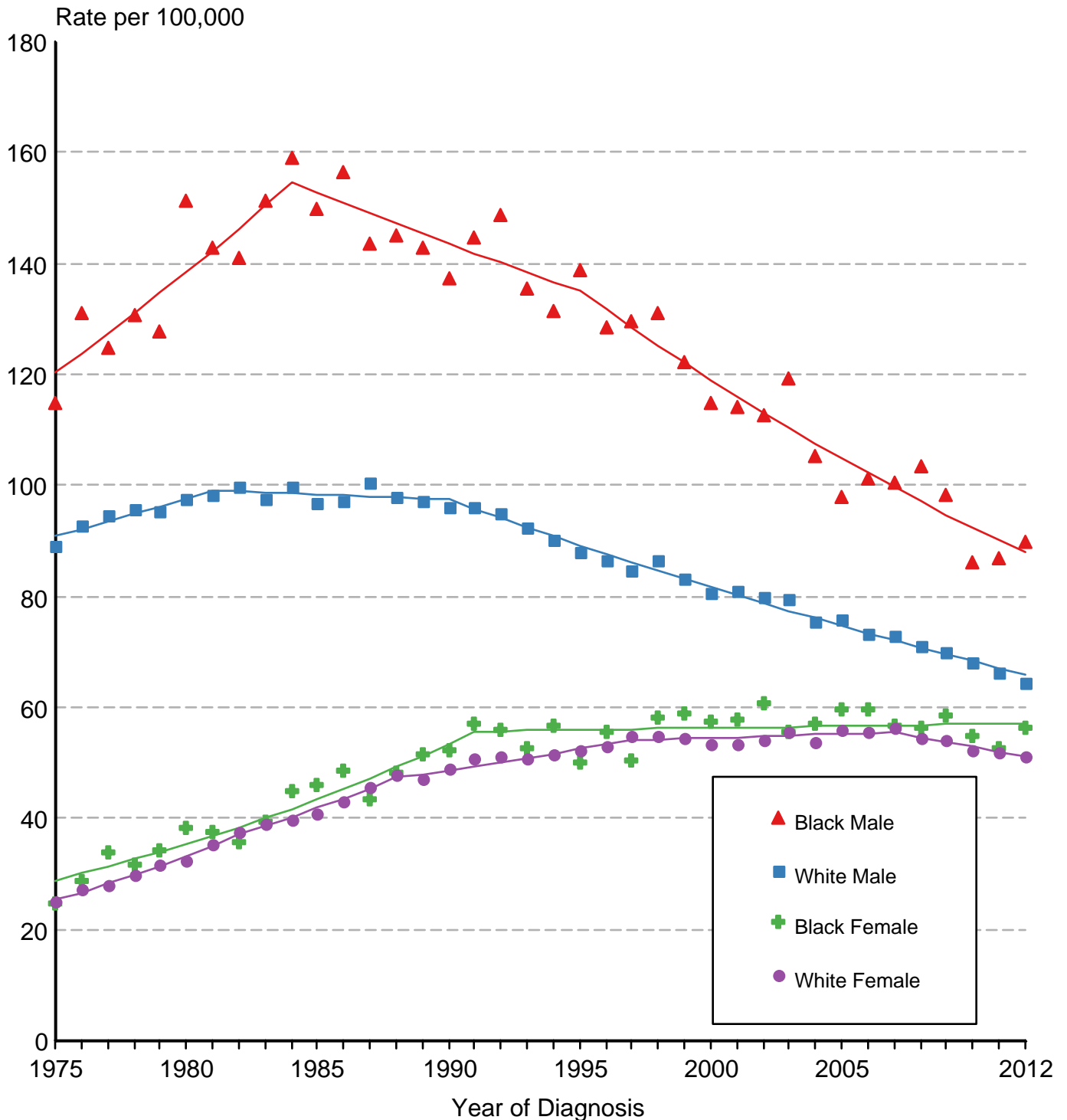
Cancer of the Lung & Bronchus SEER Delay-Adjusted Incidence & US Death Rates, 1975-2012, All Races, By Sex



Source: SEER 9 areas and US Mortality Files (National Center for Health Statistics, CDC). Rates are age-adjusted to the 2000 US Std Population (19 age groups - Census P25-1103). Regression lines are calculated using the Joinpoint Regression Program Version 4.2.0, April 2015, National Cancer Institute.

Figure 15.6

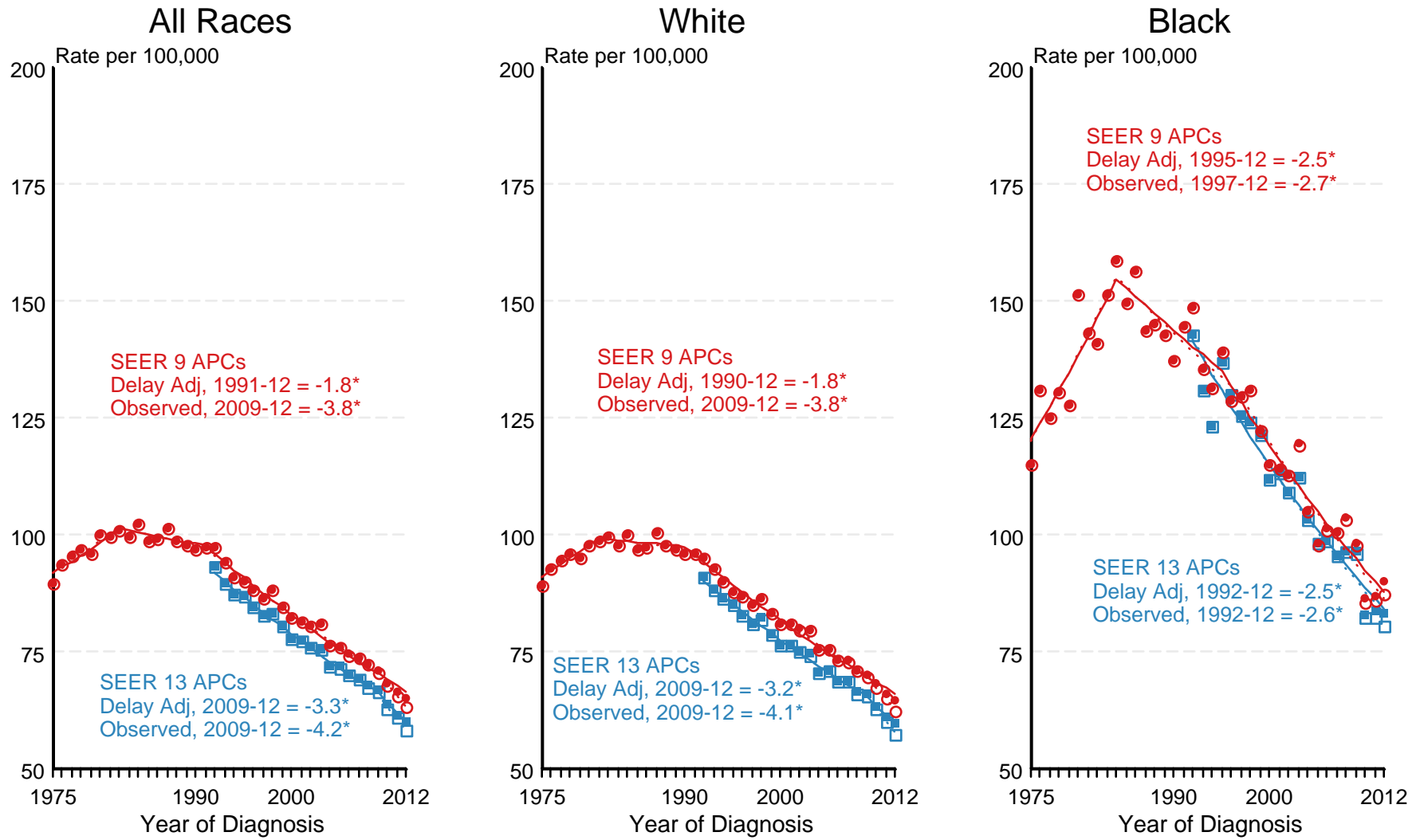
Cancer of the Lung & Bronchus SEER Delay-Adjusted Incidence, 1975-2012 By Sex and Race



Source: SEER 9 areas. Rates are age-adjusted to the 2000 US Std Population (19 age groups - Census P25-1103). Regression lines are calculated using the Joinpoint Regression Program Version 4.2.0, April 2015, National Cancer Institute.

Figure 15.7

SEER Observed Incidence and SEER Delay Adjusted Incidence Rates^a SEER 9 Areas Compared to SEER 13 Areas Cancer of the Lung and Bronchus, Male, by Race



● SEER 9 Delay-Adj. Incidence
 ○ SEER 9 Observed Incidence
 ■ SEER 13 Delay-Adj. Incidence
 □ SEER 13 Observed Incidence

Source: SEER 9 areas and SEER 13 areas.

^a Rates are age-adjusted to the 2000 US Std Population (19 age groups - Census P25-1103).

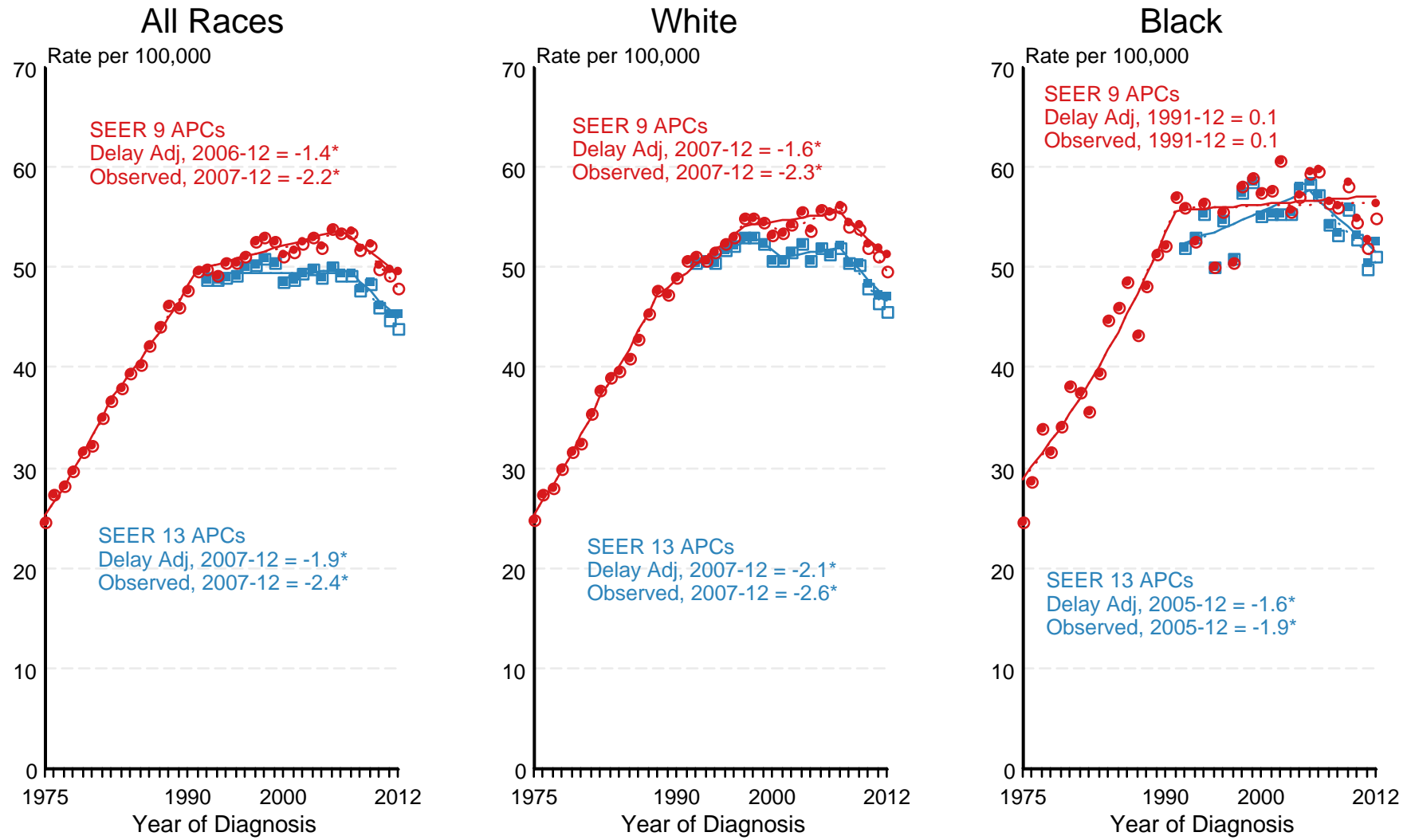
Regression lines and APCs are calculated using the Joinpoint Regression Program Version 4.2.0, April 2015, National Cancer Institute.

The APC is the Annual Percent Change for the regression line segments. The APC shown on the graph is for the most recent trend.

* The APC is significantly different from zero ($p < 0.05$).

Figure 15.8

SEER Observed Incidence and SEER Delay Adjusted Incidence Rates^a SEER 9 Areas Compared to SEER 13 Areas Cancer of the Lung and Bronchus, Female, by Race



Source: SEER 9 areas and SEER 13 areas.

^a Rates are age-adjusted to the 2000 US Std Population (19 age groups - Census P25-1103).

Regression lines and APCs are calculated using the Joinpoint Regression Program Version 4.2.0, April 2015, National Cancer Institute.

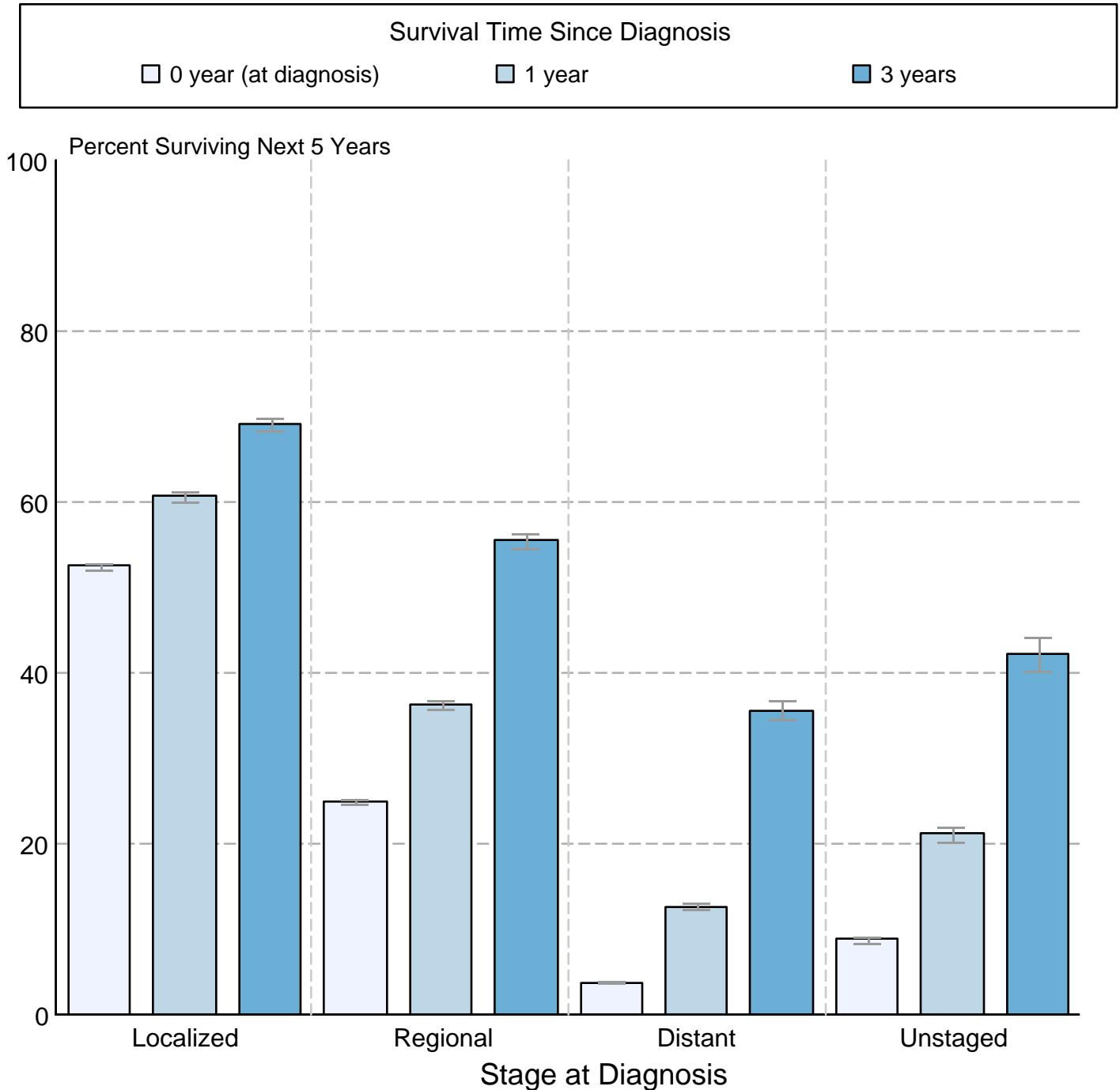
The APC is the Annual Percent Change for the regression line segments. The APC shown on the graph is for the most recent trend.

* The APC is significantly different from zero ($p < 0.05$).

Figure 15.9

Cancer of the Lung and Bronchus 5-Year SEER Conditional Relative Survival and 95% Confidence Intervals

Probability of surviving the next 5 years given the cohort
has already survived 0, 1, or 3 years
1998-2011 by stage at diagnosis



Source: SEER 18 areas (San Francisco, Connecticut, Detroit, Hawaii, Iowa, New Mexico, Seattle, Utah, Atlanta, San Jose-Monterey, Los Angeles, Alaska Native Registry, Rural Georgia, California excluding SF/SJM/LA, Kentucky, Louisiana, New Jersey and Georgia excluding ATL/RG). California excluding SF/SJM/LA, Kentucky, Louisiana, New Jersey and Georgia excluding ATL/RG contribute cases for diagnosis years 2000 and later. The remaining 13 SEER Areas contribute cases for the entire time period. Percent surviving is not shown if based on less than 25 cases. Confidence intervals are not shown if length of the confidence interval is greater than 5 times the standard error.