

Table 2.1  
All Cancer Sites (Invasive)

Trends in SEER Incidence<sup>ab</sup> and U.S. Mortality<sup>c</sup> Using the Joinpoint Regression Program,  
1975-2015 With up to Five Joinpoints, 1992-2015 With up to Four Joinpoints,  
Both Sexes by Race/Ethnicity

	JP Trend 1		JP Trend 2		JP Trend 3		JP Trend 4		JP Trend 5		JP Trend 6		AAPC <sup>d</sup>	
	Years	APC	Years	APC	Years	APC	Years	APC	Years	APC	Years	APC	2006-15	2011-15
<u>SEER 9 Delay-Adjusted Incidence<sup>a</sup>, 1975-2015</u>														
All Races	1975-89	1.2*	1989-92	2.8	1992-95	-2.4	1995-98	1.1	1998-09	-0.3*	2009-15	-1.2*	-0.9*	-1.2*
White	1975-82	0.8*	1982-92	1.8*	1992-95	-2.1	1995-98	1.3	1998-08	-0.2	2008-15	-1.0*	-0.8*	-1.0*
Black	1975-84	1.6*	1984-89	0.4	1989-92	4.8*	1992-95	-1.7	1995-09	-0.4*	2009-15	-1.9*	-1.4*	-1.9*
<u>SEER 13 Delay-Adjusted Incidence<sup>b</sup>, 1992-2015</u>														
All Races	1992-94	-3.1*	1994-99	0.4	1999-05	-0.7*	2005-08	0.4	2008-15	-1.4*			-1.0*	-1.4*
White	1992-94	-3.3*	1994-98	0.6	1998-09	-0.3*	2009-13	-1.8*	2013-15	0.3			-0.8*	-0.8
Black	1992-09	-0.5*	2009-15	-2.0*									-1.5*	-2.0*
<u>SEER 9 Observed Incidence<sup>a</sup>, 1975-2015</u>														
All Races	1975-89	1.2*	1989-92	2.8	1992-95	-2.4	1995-98	1.1	1998-09	-0.3*	2009-15	-1.5*	-1.1*	-1.5*
White	1975-82	0.8*	1982-92	1.8*	1992-95	-2.1	1995-98	1.3	1998-08	-0.2	2008-15	-1.3*	-1.1*	-1.3*
Black	1975-84	1.6*	1984-89	0.4	1989-92	4.8*	1992-95	-1.6	1995-09	-0.5*	2009-15	-2.4*	-1.8*	-2.4*
<u>SEER 13 Observed Incidence<sup>b</sup>, 1992-2015</u>														
All Races	1992-94	-3.1*	1994-99	0.4	1999-05	-0.7*	2005-08	0.3	2008-15	-1.7*			-1.2*	-1.7*
White	1992-94	-3.1*	1994-01	0.4	2001-04	-1.2	2004-08	0.3	2008-15	-1.6*			-1.2*	-1.6*
White NH <sup>ef</sup>	1992-94	-2.9*	1994-01	0.5*	2001-04	-1.4	2004-07	0.9	2007-15	-1.4*			-1.1*	-1.4*
Black	1992-09	-0.6*	2009-15	-2.6*									-1.9*	-2.6*
Black NH <sup>ef</sup>	1992-09	-0.5*	2009-15	-2.5*									-1.8*	-2.5*
API <sup>e</sup>	1992-09	-0.4*	2009-15	-1.6*									-1.2*	-1.6*
AI/AN <sup>eg</sup>	1992-15	0.0											0.0	0.0
Hispanic <sup>f</sup>	1992-94	-3.5	1994-02	0.4	2002-11	-0.4*	2011-15	-2.2*					-1.2*	-2.2*
<u>U.S. Cancer Mortality<sup>c</sup>, 1975-2015</u>														
All Races	1975-84	0.5*	1984-91	0.3*	1991-94	-0.5	1994-98	-1.3*	1998-01	-0.8*	2001-15	-1.5*	-1.5*	-1.5*
White	1975-90	0.4*	1990-94	-0.3	1994-98	-1.2*	1998-01	-0.6	2001-15	-1.4*			-1.4*	-1.4*
Black	1975-83	1.3*	1983-91	0.7*	1991-95	-0.8*	1995-01	-1.6*	2001-15	-2.1*			-2.1*	-2.1*
<u>U.S. Cancer Mortality<sup>c</sup>, 1992-2015</u>														
All Races	1992-01	-1.0*	2001-15	-1.5*									-1.5*	-1.5*
White	1992-94	-0.3	1994-98	-1.2*	1998-01	-0.6	2001-15	-1.4*					-1.4*	-1.4*
White NH <sup>ef</sup>	1992-94	0.2	1994-98	-1.2*	1998-01	-0.5	2001-15	-1.4*					-1.4*	-1.4*
Black	1992-99	-1.3*	1999-15	-2.1*									-2.1*	-2.1*
Black NH <sup>ef</sup>	1992-94	0.0	1994-01	-1.6*	2001-15	-2.0*							-2.0*	-2.0*
API <sup>e</sup>	1992-15	-1.3*											-1.3*	-1.3*
AI/AN <sup>eg</sup>	1992-04	0.4	2004-15	-1.1*									-1.1*	-1.1*
Hispanic <sup>f</sup>	1992-98	0.2	1998-15	-1.2*									-1.2*	-1.2*

Joinpoint Regression Program Version 4.6, February 2018, National Cancer Institute. (<https://surveillance.cancer.gov/joinpoint/>).

The APC is the Annual Percent Change based on rates age-adjusted to the 2000 US Std Population (19 age groups - Census P25-1130).

Trends are from the SEER 9 areas (San Francisco, Connecticut, Detroit, Hawaii, Iowa, New Mexico, Seattle, Utah, and Atlanta).

Trends are from the SEER 13 areas (SEER 9 Areas, Los Angeles, San Jose-Monterey, Rural Georgia, and the Alaska Native Registry).

Trends are from US Mortality Files, National Center for Health Statistics, Centers for Disease Control and Prevention.

The AAPC is the Average Annual Percent Change and is based on the APCs calculated by Joinpoint.

API - Asian/Pacific Islander, AI/AN - American Indian/Alaska Native, NH - Non-Hispanic

Hispanic and Non-Hispanic are not mutually exclusive from whites, blacks, Asian/Pacific Islanders, and American Indians/Alaska

Natives. Incidence data for Hispanics and Non-Hispanics are based on NHIA and exclude cases from the Alaska Native Registry.

The Hispanic and Non-Hispanic mortality trends exclude deaths from New Hampshire and Oklahoma.

Data for American Indian/Alaska Native are based on the CHSDA (Contract Health Service Delivery Area) counties.

\* The APC/AAPC is significantly different from zero ( $p < .05$ ).

- Joinpoint regression line analysis could not be performed on data series.

Table 2.2  
All Cancer Sites (Invasive)

Trends in SEER Incidence<sup>ab</sup> and U.S. Mortality<sup>c</sup> Using the Joinpoint Regression Program,  
1975-2015 With up to Five Joinpoints, 1992-2015 With up to Four Joinpoints,  
Males by Race/Ethnicity

	JP Trend 1		JP Trend 2		JP Trend 3		JP Trend 4		JP Trend 5		JP Trend 6		AAPC <sup>d</sup>	
	Years	APC	Years	APC	Years	APC	Years	APC	Years	APC	Years	APC	2006-15	2011-15
<u>SEER 9 Delay-Adjusted Incidence<sup>a</sup>, 1975-2015</u>														
All Races	1975-89	1.3*	1989-92	5.2*	1992-95	-4.9*	1995-99	0.6	1999-08	-0.6*	2008-15	-2.3*	-1.9*	-2.3*
White	1975-89	1.4*	1989-92	5.0*	1992-95	-5.1*	1995-00	0.6	2000-08	-0.6*	2008-15	-2.1*	-1.8*	-2.1*
Black	1975-81	2.8*	1981-89	0.6	1989-92	6.8*	1992-05	-1.5*	2005-08	0.5	2008-15	-3.4*	-2.5*	-3.4*
<u>SEER 13 Delay-Adjusted Incidence<sup>b</sup>, 1992-2015</u>														
All Races	1992-94	-5.8*	1994-08	-0.5*	2008-15	-2.5*							-2.1*	-2.5*
White	1992-94	-6.1*	1994-08	-0.3*	2008-15	-2.4*							-2.0*	-2.4*
Black	1992-09	-1.3*	2009-15	-3.5*									-2.8*	-3.5*
<u>SEER 9 Observed Incidence<sup>a</sup>, 1975-2015</u>														
All Races	1975-89	1.3*	1989-92	5.2*	1992-95	-4.9*	1995-99	0.6	1999-08	-0.6*	2008-15	-2.5*	-2.1*	-2.5*
White	1975-89	1.4*	1989-92	5.0*	1992-95	-5.1*	1995-00	0.6	2000-08	-0.6*	2008-15	-2.4*	-2.0*	-2.4*
Black	1975-81	2.8*	1981-89	0.6	1989-92	7.6*	1992-96	-2.5*	1996-09	-1.1*	2009-15	-3.9*	-3.0*	-3.9*
<u>SEER 13 Observed Incidence<sup>b</sup>, 1992-2015</u>														
All Races	1992-94	-5.8*	1994-08	-0.5*	2008-15	-2.8*							-2.3*	-2.8*
White	1992-94	-6.1*	1994-08	-0.4*	2008-15	-2.8*							-2.2*	-2.8*
White NH <sup>ef</sup>	1992-94	-6.4*	1994-07	-0.2	2007-15	-2.3*							-2.1*	-2.3*
Black	1992-09	-1.3*	2009-15	-4.1*									-3.2*	-4.1*
Black NH <sup>ef</sup>	1992-09	-1.3*	2009-15	-4.0*									-3.1*	-4.0*
API <sup>e</sup>	1992-07	-0.7*	2007-15	-2.7*									-2.5*	-2.7*
AI/AN <sup>eg</sup>	1992-15	-0.5*											-0.5*	-0.5*
Hispanic <sup>f</sup>	1992-09	-0.5*	2009-15	-3.7*									-2.6*	-3.7*
<u>U.S. Cancer Mortality<sup>c</sup>, 1975-2015</u>														
All Races	1975-79	1.0*	1979-90	0.3*	1990-93	-0.5	1993-01	-1.5*	2001-15	-1.8*			-1.8*	-1.8*
White	1975-79	0.9*	1979-91	0.2*	1991-94	-0.8	1994-97	-1.8*	1997-00	-1.0*	2000-15	-1.7*	-1.7*	-1.7*
Black	1975-82	1.8*	1982-90	1.0*	1990-93	-0.2	1993-01	-2.0*	2001-15	-2.7*			-2.7*	-2.7*
<u>U.S. Cancer Mortality<sup>c</sup>, 1992-2015</u>														
All Races	1992-01	-1.4*	2001-15	-1.8*									-1.8*	-1.8*
White	1992-01	-1.3*	2001-15	-1.7*									-1.7*	-1.7*
White NH <sup>ef</sup>	1992-94	-0.2	1994-97	-1.8*	1997-00	-0.9	2000-15	-1.6*					-1.6*	-1.6*
Black	1992-94	-0.5	1994-01	-2.1*	2001-15	-2.7*							-2.7*	-2.7*
Black NH <sup>ef</sup>	1992-94	-0.1	1994-02	-2.1*	2002-15	-2.6*							-2.6*	-2.6*
API <sup>e</sup>	1992-15	-1.6*											-1.6*	-1.6*
AI/AN <sup>eg</sup>	1992-15	-0.4*											-0.4*	-0.4*
Hispanic <sup>f</sup>	1992-98	0.0	1998-15	-1.6*									-1.6*	-1.6*

Joinpoint Regression Program Version 4.6, February 2018, National Cancer Institute. (<https://surveillance.cancer.gov/joinpoint/>).

The APC is the Annual Percent Change based on rates age-adjusted to the 2000 US Std Population (19 age groups - Census P25-1130).

Trends are from the SEER 9 areas (San Francisco, Connecticut, Detroit, Hawaii, Iowa, New Mexico, Seattle, Utah, and Atlanta).

Trends are from the SEER 13 areas (SEER 9 Areas, Los Angeles, San Jose-Monterey, Rural Georgia, and the Alaska Native Registry).

Trends are from US Mortality Files, National Center for Health Statistics, Centers for Disease Control and Prevention.

The AAPC is the Average Annual Percent Change and is based on the APCs calculated by Joinpoint.

API - Asian/Pacific Islander, AI/AN - American Indian/Alaska Native, NH - Non-Hispanic

Hispanic and Non-Hispanic are not mutually exclusive from whites, blacks, Asian/Pacific Islanders, and American Indians/Alaska

Natives. Incidence data for Hispanics and Non-Hispanics are based on NHIA and exclude cases from the Alaska Native Registry.

The Hispanic and Non-Hispanic mortality trends exclude deaths from New Hampshire and Oklahoma.

Data for American Indian/Alaska Native are based on the CHSDA (Contract Health Service Delivery Area) counties.

\* The APC/AAPC is significantly different from zero ( $p < .05$ ).

- Joinpoint regression line analysis could not be performed on data series.

Table 2.3  
All Cancer Sites (Invasive)

Trends in SEER Incidence<sup>ab</sup> and U.S. Mortality<sup>c</sup> Using the Joinpoint Regression Program,  
1975-2015 With up to Five Joinpoints, 1992-2015 With up to Four Joinpoints,  
Females by Race/Ethnicity

	JP Trend 1		JP Trend 2		JP Trend 3		JP Trend 4		JP Trend 5		JP Trend 6		AAPC <sup>d</sup>	
	Years	APC	Years	APC	Years	APC	Years	APC	Years	APC	Years	APC	2006-15	2011-15
<u>SEER 9 Delay-Adjusted Incidence<sup>a</sup>, 1975-2015</u>														
All Races	1975-79	-0.3	1979-87	1.6*	1987-95	0.1	1995-98	1.5	1998-03	-0.6	2003-15	0.1	0.1	0.1
White	1975-79	-0.2	1979-87	1.7*	1987-95	0.1	1995-98	1.7	1998-04	-0.4	2004-15	0.1	0.1	0.1
Black	1975-91	1.2*	1991-15	0.1									0.1	0.1
<u>SEER 13 Delay-Adjusted Incidence<sup>b</sup>, 1992-2015</u>														
All Races	1992-98	0.8*	1998-03	-0.6	2003-15	0.0							0.0	0.0
White	1992-98	1.0*	1998-03	-0.6	2003-15	0.0							0.0	0.0
Black	1992-15	0.0											0.0	0.0
<u>SEER 9 Observed Incidence<sup>a</sup>, 1975-2015</u>														
All Races	1975-79	-0.3	1979-87	1.6*	1987-95	0.1	1995-98	1.1	1998-15	-0.2*			-0.2*	-0.2*
White	1975-79	-0.2	1979-87	1.7*	1987-95	0.1	1995-98	1.4	1998-15	-0.2*			-0.2*	-0.2*
Black	1975-91	1.1*	1991-12	0.1	2012-15	-2.0*							-0.6	-1.5*
<u>SEER 13 Observed Incidence<sup>b</sup>, 1992-2015</u>														
All Races	1992-94	-0.3	1994-98	1.2	1998-04	-0.7*	2004-08	0.4	2008-15	-0.5*			-0.3	-0.5*
White	1992-94	-0.3	1994-98	1.4*	1998-04	-0.7*	2004-08	0.3	2008-15	-0.4*			-0.3	-0.4*
White NH <sup>ef</sup>	1992-98	1.1*	1998-15	-0.2*									-0.2*	-0.2*
Black	1992-11	0.1	2011-15	-1.8*									-0.7*	-1.8*
Black NH <sup>ef</sup>	1992-11	0.1	2011-15	-1.6*									-0.7*	-1.6*
API <sup>e</sup>	1992-15	0.1											0.1	0.1
AI/AN <sup>eg</sup>	1992-15	0.5*											0.5*	0.5*
Hispanic <sup>f</sup>	1992-15	0.2*											0.2*	0.2*
<u>U.S. Cancer Mortality<sup>c</sup>, 1975-2015</u>														
All Races	1975-90	0.6*	1990-94	-0.2	1994-02	-0.8*	2002-15	-1.4*					-1.4*	-1.4*
White	1975-90	0.6*	1990-95	-0.2	1995-98	-1.2*	1998-01	-0.2	2001-15	-1.3*			-1.3*	-1.3*
Black	1975-91	1.0*	1991-99	-0.6*	1999-15	-1.6*							-1.6*	-1.6*
<u>U.S. Cancer Mortality<sup>c</sup>, 1992-2015</u>														
All Races	1992-95	-0.2	1995-98	-1.2*	1998-01	-0.4	2001-15	-1.4*					-1.4*	-1.4*
White	1992-95	-0.2	1995-98	-1.2*	1998-01	-0.2	2001-15	-1.3*					-1.3*	-1.3*
White NH <sup>ef</sup>	1992-94	0.6	1994-98	-1.0*	1998-01	-0.2	2001-15	-1.3*					-1.3*	-1.3*
Black	1992-01	-0.8*	2001-15	-1.6*									-1.6*	-1.6*
Black NH <sup>ef</sup>	1992-99	-0.5*	1999-15	-1.5*									-1.5*	-1.5*
API <sup>e</sup>	1992-15	-1.0*											-1.0*	-1.0*
AI/AN <sup>eg</sup>	1992-04	0.6	2004-15	-1.4*									-1.4*	-1.4*
Hispanic <sup>f</sup>	1992-99	0.1	1999-15	-1.0*									-1.0*	-1.0*

Joinpoint Regression Program Version 4.6, February 2018, National Cancer Institute. (<https://surveillance.cancer.gov/joinpoint/>).

The APC is the Annual Percent Change based on rates age-adjusted to the 2000 US Std Population (19 age groups - Census P25-1130).

Trends are from the SEER 9 areas (San Francisco, Connecticut, Detroit, Hawaii, Iowa, New Mexico, Seattle, Utah, and Atlanta).

Trends are from the SEER 13 areas (SEER 9 Areas, Los Angeles, San Jose-Monterey, Rural Georgia, and the Alaska Native Registry).

Trends are from US Mortality Files, National Center for Health Statistics, Centers for Disease Control and Prevention.

The AAPC is the Average Annual Percent Change and is based on the APCs calculated by Joinpoint.

API - Asian/Pacific Islander, AI/AN - American Indian/Alaska Native, NH - Non-Hispanic

Hispanic and Non-Hispanic are not mutually exclusive from whites, blacks, Asian/Pacific Islanders, and American Indians/Alaska

Natives. Incidence data for Hispanics and Non-Hispanics are based on NHIA and exclude cases from the Alaska Native Registry.

The Hispanic and Non-Hispanic mortality trends exclude deaths from New Hampshire and Oklahoma.

Data for American Indian/Alaska Native are based on the CHSDA (Contract Health Service Delivery Area) counties.

\* The APC/AAPC is significantly different from zero ( $p < .05$ ).

- Joinpoint regression line analysis could not be performed on data series.

Table 2.4  
All Cancer Sites (Invasive)

Delay-adjusted SEER Incidence<sup>a</sup> Rates by Year, Race and Sex

Year of Diagnosis:	All Races			Whites			Blacks		
	Total	Males	Females	Total	Males	Females	Total	Males	Females
1975-1979	407.22	484.10	365.02	409.21	485.26	369.81	437.57	564.32	350.91
1980	418.07	505.81	368.12	419.51	505.20	373.41	467.45	615.07	366.53
1981	425.27	510.79	377.15	427.67	510.80	383.88	472.99	634.35	363.04
1982	424.47	511.08	376.16	427.73	512.50	383.32	465.25	622.11	359.37
1983	431.10	519.93	380.69	434.34	520.93	387.91	487.34	646.27	382.39
1984	439.98	525.43	392.45	443.63	527.71	399.51	488.33	644.02	386.15
1985	448.88	531.21	403.19	453.52	533.62	411.49	489.37	643.82	388.58
1986	451.34	538.15	402.31	456.04	542.89	409.20	493.74	643.41	396.73
1987	468.14	563.34	413.36	475.01	568.98	423.40	501.25	666.32	394.32
1988	464.01	558.49	409.48	470.31	565.02	417.95	504.58	658.07	405.10
1989	467.99	567.20	408.59	475.38	573.77	418.79	493.00	661.19	385.28
1990	482.11	592.85	415.66	488.95	599.38	424.85	522.42	700.07	409.74
1991	503.12	637.46	419.03	510.65	644.62	428.66	549.51	765.38	412.92
1992	510.72	658.37	414.88	517.03	663.80	423.49	570.30	811.56	414.07
1993	493.50	622.30	408.33	497.09	620.62	417.04	570.03	821.51	404.67
1994	483.68	589.94	413.68	487.68	587.93	423.25	558.67	784.97	409.30
1995	477.29	572.10	415.11	482.54	570.79	426.33	544.47	752.36	405.08
1996	479.52	572.94	418.40	485.29	574.63	428.35	542.80	730.35	418.41
1997	486.80	576.12	428.65	493.81	577.07	441.11	543.20	744.12	412.02
1998	488.71	573.26	434.33	496.88	576.76	446.83	541.01	728.27	420.49
1999	490.95	581.15	430.96	498.92	583.34	443.78	544.13	728.79	422.86
2000	486.90	581.01	422.63	497.13	585.05	438.10	531.58	717.47	407.23
2001	490.62	582.28	427.53	501.69	588.60	442.72	524.23	704.40	402.89
2002	488.40	575.61	428.70	498.28	582.09	441.32	538.04	702.93	428.02
2003	476.25	561.16	417.92	486.82	566.13	432.95	523.14	686.73	414.38
2004	477.44	559.32	420.81	487.32	564.94	433.78	527.19	689.29	420.49
2005	473.51	550.22	420.28	485.22	558.67	434.60	512.61	649.46	422.10
2006	477.20	557.43	419.96	488.90	565.04	434.74	512.59	651.03	417.60
2007	483.83	569.27	422.14	494.69	575.59	436.42	522.55	674.85	417.92
2008	477.92	551.13	425.86	488.23	556.47	439.98	522.71	671.93	421.38
2009	477.37	542.94	430.90	487.72	549.30	444.14	516.95	649.40	427.29
2010	468.06	532.71	421.64	479.09	539.69	435.79	499.01	623.54	413.15
2011	463.31	521.41	422.40	474.39	528.64	436.55	494.74	601.16	421.90
2012	451.20	493.64	422.94	461.05	499.80	436.18	491.12	584.55	426.74
2013	446.71	486.64	420.70	457.37	493.03	435.35	477.70	570.89	413.23
2014	446.08	480.23	424.92	459.10	489.40	441.76	459.77	536.57	408.64
2015	446.02	479.24	425.58	460.61	490.70	443.28	461.18	531.90	413.19

Reference: [Cancer Incidence Rates Adjusted for Reporting Delay](#).

Individual rates for diagnosis years 1975-1979 available in web browser version of [Cancer Statistics Review](#).

SEER 9 areas (San Francisco, Connecticut, Detroit, Hawaii, Iowa, New Mexico, Seattle, Utah, and Atlanta).

Rates are per 100,000 and are age-adjusted to the 2000 US Std Population (19 age groups - Census P25-1130).

Delay-adjusted rate is not shown for observed rates based on less than 16 cases for the time interval.

<sup>a</sup>

-

Table 2.5  
All Cancer Sites (Invasive)

Age-adjusted SEER Incidence<sup>a</sup> Rates by Year, Race and Sex

Year of Diagnosis:	All Races			Whites			Blacks		
	Total	Males	Females	Total	Males	Females	Total	Males	Females
1975-2015	461.99	542.54	409.64	468.81	546.71	419.58	502.94	653.06	402.68
1975-1979	407.22	484.10	365.02	409.21	485.26	369.81	437.57	564.32	350.91
1980	418.07	505.81	368.12	419.51	505.20	373.41	467.45	615.07	366.53
1981	425.27	510.79	377.15	427.67	510.80	383.88	472.99	634.35	363.04
1982	424.47	511.08	376.16	427.73	512.50	383.32	465.25	622.11	359.37
1983	431.10	519.93	380.69	434.34	520.93	387.91	487.34	646.27	382.39
1984	439.98	525.43	392.45	443.63	527.71	399.51	488.33	644.02	386.15
1985	448.88	531.21	403.19	453.52	533.62	411.49	489.37	643.82	388.58
1986	451.34	538.15	402.31	456.04	542.89	409.20	493.74	643.41	396.73
1987	468.14	563.34	413.36	475.01	568.98	423.40	501.25	666.32	394.32
1988	464.01	558.49	409.48	470.31	565.02	417.95	504.58	658.07	405.10
1989	467.99	567.20	408.59	475.38	573.77	418.79	493.00	661.19	385.28
1990	482.11	592.85	415.66	488.95	599.38	424.85	522.42	700.07	409.74
1991	503.12	637.46	419.03	510.65	644.62	428.66	549.51	765.38	412.92
1992	510.72	658.37	414.88	517.03	663.80	423.49	570.30	811.56	414.07
1993	493.50	622.30	408.33	497.09	620.62	417.04	570.03	821.51	404.67
1994	483.68	589.94	413.68	487.68	587.93	423.25	558.67	784.97	409.30
1995	477.29	572.10	415.11	482.54	570.79	426.33	544.47	752.36	405.08
1996	479.52	572.94	418.40	485.29	574.63	428.35	542.80	730.35	418.41
1997	486.80	576.12	428.65	493.81	577.07	441.11	543.20	744.12	412.02
1998	488.71	573.26	434.33	496.88	576.76	446.83	541.01	728.27	420.49
1999	490.95	581.15	430.96	498.92	583.34	443.78	544.13	728.79	422.86
2000	486.90	581.01	422.63	497.13	585.05	438.10	531.58	717.47	407.23
2001	490.62	582.28	427.53	501.69	588.60	442.72	524.23	704.40	402.89
2002	488.40	575.61	428.70	498.28	582.09	441.32	538.04	702.93	428.02
2003	476.25	561.16	417.92	486.82	566.13	432.95	523.14	686.73	414.38
2004	477.44	559.32	420.81	487.32	564.94	433.78	527.19	689.29	420.49
2005	473.51	550.22	420.28	485.22	558.67	434.60	512.61	649.46	422.10
2006	477.20	557.43	419.96	488.90	565.04	434.74	512.59	651.03	417.60
2007	483.23	568.57	421.62	493.96	574.74	435.78	521.13	672.98	416.80
2008	476.73	549.76	424.80	486.79	554.82	438.69	519.81	668.16	419.08
2009	475.59	540.91	429.30	485.56	546.88	442.18	512.73	644.00	423.86
2010	465.74	530.08	419.55	476.28	536.52	433.23	493.52	616.60	408.68
2011	460.45	518.19	419.79	470.91	524.76	433.35	488.03	592.98	416.21
2012	447.85	489.98	419.80	456.99	495.40	432.34	483.00	574.61	419.87
2013	442.10	481.62	416.35	451.80	487.03	430.04	467.74	558.71	404.79
2014	439.88	473.50	419.06	451.43	481.17	434.41	447.87	522.35	398.27
2015	436.03	468.31	416.21	447.76	476.85	431.05	443.29	510.93	397.42

<sup>a</sup> Individual rates for diagnosis years 1975-1979 available in web browser version of [Cancer Statistics Review](#).  
SEER 9 areas (San Francisco, Connecticut, Detroit, Hawaii, Iowa, New Mexico, Seattle, Utah, and Atlanta).  
Rates are per 100,000 and are age-adjusted to the 2000 US Std Population (19 age groups - Census P25-1130).  
- Statistic not shown. Rate based on less than 16 cases for the time interval.

Table 2.6  
All Cancer Sites (Invasive)

Age-adjusted U.S. Death<sup>a</sup> Rates by Year, Race and Sex

Year of Death:	All Races			Whites			Blacks		
	Total	Males	Females	Total	Males	Females	Total	Males	Females
1975-2015	193.84	244.05	160.52	191.92	240.07	159.99	237.18	322.11	184.30
1975-1979	202.75	264.24	162.54	199.61	259.14	161.35	244.15	334.74	179.95
1980	206.96	271.08	165.75	203.27	265.03	164.17	256.18	353.91	189.25
1981	206.40	269.78	165.90	202.64	263.27	164.55	256.77	358.65	187.47
1982	208.32	272.89	167.45	204.54	266.28	166.11	260.36	364.86	190.17
1983	209.21	274.09	168.27	205.17	267.22	166.69	263.75	369.32	193.24
1984	210.91	275.08	170.55	206.66	267.55	169.02	268.15	377.93	195.67
1985	211.35	275.68	170.96	207.25	268.25	169.58	268.06	377.82	196.31
1986	211.79	276.04	171.59	207.73	268.83	170.01	269.45	378.92	199.05
1987	211.91	276.34	171.54	207.78	268.96	169.87	271.12	383.24	199.91
1988	212.62	276.89	172.53	208.48	269.46	170.94	271.59	384.17	200.36
1989	214.30	278.50	174.25	209.96	270.25	172.88	275.87	395.28	200.87
1990	214.95	279.82	174.65	210.41	271.48	172.89	279.30	399.14	205.39
1991	215.06	279.15	175.30	210.62	271.19	173.41	278.97	395.85	207.39
1992	213.46	276.51	174.39	209.24	268.91	172.58	274.93	389.20	205.80
1993	213.45	275.89	174.55	209.16	267.89	172.82	277.09	394.76	206.29
1994	211.74	272.12	174.11	207.83	264.73	172.62	271.96	385.20	204.06
1995	209.89	268.50	173.35	206.09	261.46	171.73	269.51	379.02	204.53
1996	207.00	263.75	171.21	203.40	256.83	169.85	265.28	373.70	200.94
1997	203.55	258.13	169.00	199.94	251.58	167.35	262.14	363.18	202.53
1998	200.82	253.63	166.93	197.56	247.62	165.38	255.66	353.13	198.38
1999	200.72	252.75	167.24	197.75	247.14	165.92	253.80	349.23	197.54
2000	198.79	248.46	166.70	196.37	243.37	165.98	248.07	341.20	193.21
2001	196.29	245.05	164.61	193.98	240.31	163.75	244.34	334.14	192.12
2002	194.36	241.63	163.38	192.38	237.62	162.56	240.81	325.80	191.45
2003	190.89	235.81	161.16	189.10	232.16	160.40	235.16	314.60	188.76
2004	186.84	230.27	157.92	185.21	226.60	157.41	228.98	307.30	183.51
2005	185.23	228.09	156.46	183.87	224.94	156.04	224.83	300.33	180.94
2006	182.03	222.56	154.63	181.10	220.02	154.52	218.93	290.16	177.31
2007	179.26	219.33	152.00	178.30	216.64	151.91	216.23	286.57	175.47
2008	176.32	215.34	149.27	175.69	213.21	149.37	209.37	275.26	170.41
2009	173.40	211.17	147.12	173.03	209.33	147.48	205.39	268.91	167.41
2010	171.74	208.79	145.73	171.35	207.15	145.85	202.85	264.14	166.20
2011	168.74	204.29	143.50	168.53	203.30	143.44	199.07	253.63	166.06
2012	166.34	200.55	141.79	166.41	199.86	142.03	194.11	247.21	161.74
2013	163.19	196.45	139.24	163.52	195.94	139.82	189.72	240.33	158.55
2014	161.30	193.55	137.90	161.82	193.48	138.48	186.37	234.00	156.98
2015	158.68	189.95	135.83	159.38	190.11	136.53	181.01	226.71	152.64

<sup>a</sup> Individual rates for years of death 1975-1979 available in web browser version of [Cancer Statistics Review](#).  
US Mortality Files, National Center for Health Statistics, Centers for Disease Control and Prevention.  
Rates are per 100,000 and are age-adjusted to the 2000 US Std Population (19 age groups - Census P25-1130).  
- Statistic not shown. Rate based on less than 16 cases for the time interval.

Table 2.7  
All Cancer Sites (Invasive)

SEER Incidence<sup>a</sup> and U.S. Death<sup>b</sup> Rates, Age-Adjusted and Age-Specific Rates, by Race and Sex

	All Races			Whites			Blacks		
	Total	Males	Females	Total	Males	Females	Total	Males	Females
<u>SEER Incidence</u>									
<u>Age at Diagnosis</u>									
Age-Adjusted Rates, 2011-2015									
All ages	439.2	483.0	409.9	448.8	488.5	423.1	453.4	535.0	397.8
Under 65	218.6	203.8	233.9	221.8	204.1	240.5	235.0	247.2	225.7
65 and over	1,964.0	2,413.2	1,626.8	2,017.3	2,454.2	1,685.2	1,963.4	2,524.5	1,587.8
All ages (WHO world std) <sup>c</sup>	333.1	357.2	317.0	339.9	360.4	327.2	348.4	406.0	307.6
Age-Specific Rates, 2011-2015									
<1	23.6	23.1	24.1	23.6	24.0	23.2	20.1	16.9	23.3
1-4	21.9	22.3	21.5	23.2	23.4	23.0	16.2	16.6	15.8
5-9	12.9	13.8	11.9	13.7	15.0	12.3	10.4	9.5	11.3
10-14	14.5	14.9	14.0	15.1	15.4	14.9	12.2	13.1	11.3
15-19	23.3	23.8	22.7	25.2	25.7	24.7	15.5	16.0	14.9
20-24	36.3	34.8	37.9	40.1	38.6	41.8	22.0	20.5	23.5
25-29	58.9	50.1	68.1	63.7	55.0	73.0	42.1	33.1	50.7
30-34	92.8	67.8	118.2	98.4	72.8	125.4	73.6	51.8	93.8
35-39	137.9	91.1	184.6	143.4	96.2	192.2	121.9	77.4	161.8
40-44	218.4	143.2	292.8	223.5	146.2	302.5	207.4	147.8	260.7
45-49	347.7	259.6	434.4	352.1	260.7	444.8	360.3	310.0	405.5
50-54	555.0	509.3	599.2	558.0	504.7	611.0	615.9	604.6	593.9
55-59	812.8	860.9	767.4	814.2	847.2	782.2	966.1	1,151.8	804.5
60-64	1,151.1	1,310.1	1,005.5	1,154.7	1,291.2	1,026.1	1,383.9	1,757.0	1,079.0
65-69	1,610.6	1,920.8	1,334.7	1,633.3	1,913.6	1,377.4	1,810.1	2,383.4	1,366.4
70-74	1,925.9	2,328.4	1,586.7	1,975.7	2,355.8	1,648.5	1,990.4	2,579.5	1,562.7
75-79	2,169.6	2,643.0	1,800.3	2,244.9	2,705.4	1,877.6	2,106.8	2,654.9	1,745.3
80-84	2,277.1	2,834.9	1,890.9	2,355.3	2,913.1	1,959.9	2,080.8	2,623.1	1,775.6
85+	2,104.8	2,789.9	1,748.3	2,165.7	2,884.9	1,789.3	1,862.3	2,382.8	1,642.0
<u>U.S. Mortality</u>									
<u>Age at Death</u>									
Age-Adjusted Rates, 2011-2015									
All ages	163.5	196.8	139.6	163.8	196.4	140.0	189.8	239.9	159.0
Under 65	52.0	55.8	48.6	51.2	54.9	47.8	68.0	74.0	63.2
65 and over	934.1	1,171.2	768.3	942.2	1,174.5	777.3	1,031.4	1,386.3	821.7
All ages (WHO world std) <sup>c</sup>	111.5	131.3	96.4	111.4	130.7	96.4	133.0	163.8	112.9
Age-Specific Rates, 2011-2015									
<1	1.5	1.5	1.5	1.6	1.7	1.4	1.4	1.0	1.8
1-4	2.2	2.4	2.0	2.3	2.4	2.1	2.2	2.3	2.0
5-9	2.1	2.3	2.0	2.2	2.5	2.0	2.0	2.1	1.9
10-14	2.1	2.3	1.9	2.2	2.3	2.0	2.0	2.3	1.8
15-19	2.9	3.4	2.4	3.0	3.4	2.5	2.7	3.1	2.3
20-24	4.1	4.7	3.4	4.2	4.8	3.5	4.2	4.7	3.7
25-29	6.2	6.6	5.8	6.3	6.8	5.8	6.9	6.8	7.0
30-34	10.8	10.0	11.5	10.6	10.1	11.1	13.8	11.5	15.9
35-39	19.4	16.7	22.0	19.0	16.7	21.4	25.0	19.8	29.6
40-44	36.1	31.0	41.1	35.6	31.2	40.2	45.4	35.2	54.4
45-49	71.4	67.4	75.3	70.3	66.9	73.7	90.2	82.7	96.9
50-54	137.5	143.0	132.3	135.0	140.6	129.4	180.3	187.2	174.2
55-59	233.3	263.0	205.2	228.7	257.0	201.5	311.4	359.4	270.3
60-64	355.1	414.9	300.2	349.4	405.0	297.1	476.1	588.6	384.5
65-69	521.5	611.6	440.6	520.4	605.2	442.8	652.6	819.7	523.1
70-74	750.1	895.5	626.2	754.9	893.7	634.2	879.0	1,133.7	696.0
75-79	1,013.5	1,237.7	836.5	1,025.1	1,244.1	848.5	1,109.2	1,449.2	888.5
80-84	1,311.8	1,673.1	1,060.5	1,326.5	1,682.2	1,073.4	1,382.3	1,908.2	1,092.4
85+	1,650.0	2,279.4	1,328.2	1,671.7	2,301.9	1,345.2	1,641.4	2,445.4	1,311.4

<sup>a</sup> SEER 18 areas. Rates are per 100,000 and are age-adjusted to the 2000 US Std Population (19 age groups - Census P25-1130), unless noted.

<sup>b</sup> US Mortality Files, National Center for Health Statistics, Centers for Disease Control and Prevention.

<sup>c</sup> Rates are per 100,000 and are age-adjusted to the 2000 US Std Population (19 age groups - Census P25-1130), unless noted.

- Rates are per 100,000 and are age-adjusted to the world (WHO 2000-2025) standard million.

- Statistic not shown. Rate based on less than 16 cases for the time interval.

Table 2.8  
All Cancer Sites (Invasive)

5-Year Relative and Period Survival (Percent) by Race, Sex, Diagnosis Year and Age

	All Races			Whites			Blacks		
	Total	Males	Females	Total	Males	Females	Total	Males	Females
5-Year Relative Survival (Percent)									
Year of Diagnosis:									
1960-1963 <sup>a</sup>	-	-	-	39	-	-	27	-	-
1970-1973 <sup>a</sup>	-	-	-	43	-	-	31	-	-
1975-1977 <sup>b</sup>	48.9	41.7	55.9	49.8	42.7	56.5	39.1	32.7	46.2
1978-1980 <sup>b</sup>	49.0	43.1	55.0	50.0	44.3	55.6	39.0	33.3	45.6
1981-1983 <sup>b</sup>	50.2	45.2	55.1	51.3	46.6	56.0	38.8	34.2	44.4
1984-1986 <sup>b</sup>	52.4	47.2	57.6	53.6	48.6	58.6	40.2	35.5	45.5
1987-1989 <sup>b</sup>	55.3	51.1	59.6	56.7	52.8	60.6	43.0	38.9	47.7
1990-1992 <sup>b</sup>	59.9	59.1	60.9	61.4	60.8	62.1	47.9	47.7	48.2
1993-1995 <sup>b</sup>	61.3	60.9	61.8	62.4	62.1	62.8	52.9	54.6	50.6
1996-1998 <sup>b</sup>	63.3	63.0	63.7	64.4	64.1	64.7	55.3	58.0	52.2
1999-2001 <sup>b</sup>	66.0	66.3	65.7	67.2	67.6	66.8	58.1	61.2	54.4
2002-2004 <sup>b</sup>	67.1	67.7	66.5	68.4	69.0	67.7	59.6	63.4	55.4
2005-2007 <sup>b</sup>	68.6	69.3	67.8	69.7	70.4	69.0	61.4	64.9	57.6
2008-2014 <sup>b</sup>	69.2 <sup>e</sup>	68.9 <sup>e</sup>	69.5 <sup>e</sup>	70.1 <sup>e</sup>	69.8 <sup>e</sup>	70.5 <sup>e</sup>	63.3 <sup>e</sup>	65.7 <sup>e</sup>	60.7 <sup>e</sup>
5-Year Period Survival (Percent) <sup>cd</sup>									
2014	66.8	65.7	67.9	67.1	65.7	68.5	61.5	63.0	59.7
5-Year Relative Survival (Percent), 2008-2014 <sup>c</sup>									
Age at Diagnosis:									
Ages <45	82.7	78.3	85.4	84.0	79.9	86.6	72.9	67.9	75.9
Ages 45-54	74.3	68.9	78.6	75.3	69.5	79.9	66.5	65.4	67.4
Ages 55-64	70.1	69.1	71.3	70.9	69.7	72.5	63.4	65.2	60.5
Ages 65-74	66.9	68.9	64.1	67.3	68.9	65.0	61.7	66.3	55.1
Ages 75+	50.5	53.0	48.1	51.0	53.0	49.2	43.1	48.4	38.9
Ages <65	73.9	70.5	77.1	74.8	71.2	78.2	66.0	65.6	66.4
Ages 65+	59.3	62.3	55.9	59.7	62.1	56.8	54.5	60.5	47.7

<sup>a</sup> Based on End Results data from a series of hospital registries and one population-based registry.  
<sup>b</sup> SEER 9 areas (San Francisco, Connecticut, Detroit, Hawaii, Iowa, New Mexico, Seattle, Utah, Atlanta).  
Based on follow-up of patients into 2015. [Expected survival rates](#) are derived from the U.S. Annual Life Tables.  
<sup>c</sup> SEER 18 areas (San Francisco, Connecticut, Detroit, Hawaii, Iowa, New Mexico, Seattle, Utah, Atlanta, San Jose-Monterey, Los Angeles, Alaska Native Registry, Rural Georgia, California excluding SF/SJM/LA, Kentucky, Louisiana, New Jersey and Georgia excluding ATL/RG). Expected survival rates are derived from life tables by socio-economic status, geography and race developed by the SEER program.  
Based on follow-up of patients into 2015.  
<sup>d</sup> Period survival provides a 2014 estimate of survival by piecing together the most recent conditional survival estimates from several cohorts. It is computed here using three year calendar blocks (2010-2012: 0-1 year survival), (2009-2011: 1-2 year survival), (2008-2010: 2-3 year survival), (2007-2009: 3-4 year survival), (2006-2008: 4-5 years survival).  
<sup>e</sup> The difference between 1975-1977 and 2008-2014 is statistically significant (p<.05).  
<sup>f</sup> The standard error is between 5 and 10 percentage points.  
<sup>g</sup> The standard error is greater than 10 percentage points.  
- Statistic could not be calculated due to fewer than 25 cases during the time period.



Table 2.9  
All Cancer Sites (Invasive)

SEER<sup>a</sup> Relative Survival (Percent)  
By Year of Diagnosis

All Races, Males and Females

Year of Diagnosis

	1975- 1979	1980- 1984	1985- 1989	1990- 1994	1995	1996	1997	1998	1999	2000	2001	2002	2003	2004	2005	2006	2007	2008	2009	2010	2011	2012	2013	2014
Survival Time																								
1-year	69.2	70.7	73.2	76.4	76.6	77.1	77.7	78.0	78.7	79.0	79.5	79.8	79.5	80.1	80.4	80.9	81.4	81.6	81.9	81.8	82.1	81.8	82.1	81.8
2-year	59.8	61.3	64.5	68.8	69.3	70.2	70.9	71.4	72.2	72.7	73.4	73.9	73.5	74.1	74.4	75.3	75.8	75.9	76.0	76.2	76.4	75.7	76.1	
3-year	54.7	56.2	59.8	64.9	65.7	66.7	67.4	68.1	68.9	69.6	70.3	70.8	70.3	71.0	71.2	72.3	72.7	72.7	73.0	73.0	73.2	72.4		
4-year	51.4	52.8	56.7	62.3	63.3	64.3	65.1	65.8	66.8	67.5	68.2	68.8	68.3	68.8	69.3	70.2	70.7	70.6	70.9	70.9	71.0			
5-year	49.0	50.2	54.4	60.4	61.6	62.5	63.3	64.0	65.2	66.0	66.8	67.3	66.7	67.3	67.7	68.7	69.3	69.1	69.5	69.3				
6-year	47.0	48.2	52.6	58.9	60.2	61.2	61.9	62.7	63.9	64.8	65.7	66.1	65.5	66.1	66.5	67.6	68.1	67.8	68.2					
7-year	45.4	46.5	51.0	57.6	59.0	60.1	61.0	61.7	62.9	63.7	64.6	65.2	64.5	65.1	65.5	66.6	67.1	66.8						
8-year	44.1	45.1	49.8	56.4	58.1	59.2	60.1	60.8	61.9	62.7	63.7	64.3	63.6	64.3	64.7	65.8	66.2							
9-year	42.9	43.9	48.6	55.5	57.2	58.3	59.2	59.9	61.2	62.0	63.1	63.6	62.8	63.4	63.9	65.0								
10-year	41.8	42.9	47.7	54.5	56.4	57.4	58.5	59.1	60.5	61.3	62.3	63.0	61.9	62.7	63.2									
11-year	40.8	41.9	46.8	53.7	55.6	56.8	57.7	58.4	59.7	60.5	61.7	62.3	61.3	62.0										
12-year	40.0	41.1	45.9	53.0	54.8	56.1	57.2	57.7	59.1	59.8	61.0	61.6	60.7											
13-year	39.3	40.3	45.1	52.3	54.0	55.5	56.5	57.1	58.5	59.1	60.3	61.1												
14-year	38.7	39.6	44.4	51.6	53.3	54.8	55.9	56.5	57.8	58.6	59.8													
15-year	38.0	39.0	43.8	51.0	52.7	54.3	55.3	56.0	57.3	58.0														
16-year	37.4	38.3	43.2	50.4	52.1	53.7	54.6	55.4	56.7															
17-year	36.9	37.7	42.7	49.8	51.5	53.1	54.1	54.9																
18-year	36.4	37.1	42.2	49.2	50.9	52.6	53.5																	
19-year	36.0	36.6	41.7	48.6	50.3	51.9																		
20-year	35.5	36.1	41.3	48.1	49.6																			
21-year	35.0	35.6	40.8	47.6																				
22-year	34.6	35.2	40.4																					
23-year	34.1	34.7	39.9																					
24-year	33.7	34.3	39.5																					
25-year	33.2	33.9	39.0																					
26-year	32.8	33.5	38.5																					
27-year	32.5	33.1																						
28-year	32.1	32.7																						
29-year	31.8	32.4																						
30-year	31.4	32.0																						

<sup>a</sup> Based on the SEER 9 areas (San Francisco, Connecticut, Detroit, Hawaii, Iowa, New Mexico, Seattle, Utah, and Atlanta). [Expected survival rates](#) are derived from the U.S. Annual Life Tables.

Table 2.10  
All Cancer Sites (Invasive)

SEER<sup>a</sup> Relative Survival (Percent)  
By Year of Diagnosis

All Races, Males

Year of Diagnosis

	1975- 1979	1980- 1984	1985- 1989	1990- 1994	1995	1996	1997	1998	1999	2000	2001	2002	2003	2004	2005	2006	2007	2008	2009	2010	2011	2012	2013	2014
Survival Time																								
1-year	63.7	66.6	69.9	75.5	75.3	76.2	76.9	76.8	78.0	78.6	79.1	79.2	79.0	79.7	80.0	80.9	81.5	81.3	81.6	81.4	81.4	80.4	80.7	80.3
2-year	53.4	56.4	60.4	67.7	68.0	69.4	70.3	70.4	71.5	72.5	73.1	73.5	73.0	73.9	74.1	75.5	75.9	75.6	75.6	75.8	75.7	74.3	74.3	
3-year	48.2	51.2	55.5	64.1	64.7	66.1	67.0	67.1	68.5	69.5	70.3	70.8	70.2	71.0	71.2	72.6	73.2	72.7	72.9	72.9	72.5	70.9		
4-year	44.7	47.7	52.2	61.6	62.4	63.8	64.9	65.0	66.6	67.6	68.5	69.1	68.4	69.2	69.5	70.7	71.4	70.8	71.0	70.9	70.6			
5-year	42.2	45.0	49.9	59.8	60.9	62.3	63.2	63.5	65.2	66.3	67.4	67.9	67.2	68.0	68.2	69.5	70.2	69.6	69.7	69.6				
6-year	40.2	43.0	48.1	58.4	59.5	61.1	61.9	62.2	64.1	65.2	66.4	67.0	66.0	66.9	67.0	68.6	69.1	68.4	68.7					
7-year	38.5	41.3	46.4	57.0	58.5	60.1	61.1	61.3	63.2	64.2	65.5	66.2	65.2	66.0	66.1	67.7	68.2	67.6						
8-year	37.1	39.9	45.0	55.9	57.6	59.3	60.2	60.5	62.3	63.2	64.8	65.4	64.4	65.2	65.2	66.9	67.5							
9-year	35.8	38.6	43.8	54.9	56.8	58.4	59.4	59.6	61.6	62.7	64.4	64.9	63.5	64.4	64.7	66.2								
10-year	34.6	37.6	42.8	53.9	56.0	57.6	58.8	58.9	61.0	62.0	63.6	64.4	62.7	63.7	64.0									
11-year	33.5	36.6	41.9	53.1	55.2	56.9	58.1	58.2	60.4	61.0	62.9	63.6	62.1	63.1										
12-year	32.6	35.7	40.9	52.3	54.4	56.2	57.5	57.5	59.8	60.5	62.5	63.1	61.5											
13-year	31.8	34.9	40.1	51.7	53.5	55.7	56.8	56.9	59.2	59.8	61.9	62.5												
14-year	31.1	34.1	39.3	51.0	52.6	55.1	56.1	56.4	58.6	59.2	61.5													
15-year	30.4	33.4	38.6	50.3	51.9	54.5	55.7	56.0	58.0	58.6														
16-year	29.7	32.7	37.9	49.7	51.4	54.0	54.9	55.5	57.6															
17-year	29.0	32.0	37.4	49.0	50.7	53.4	54.2	55.0																
18-year	28.4	31.5	36.8	48.4	50.3	53.0	53.5																	
19-year	28.0	30.9	36.3	47.8	49.7	52.4																		
20-year	27.6	30.3	35.9	47.4	48.7																			
21-year	27.1	29.8	35.4	46.8																				
22-year	26.6	29.3	35.0																					
23-year	26.1	28.9	34.5																					
24-year	25.6	28.5	34.0																					
25-year	25.1	28.2	33.6																					
26-year	24.6	27.7	33.1																					
27-year	24.3	27.4																						
28-year	23.9	27.1																						
29-year	23.6	26.8																						
30-year	23.2	26.4																						

<sup>a</sup> Based on the SEER 9 areas (San Francisco, Connecticut, Detroit, Hawaii, Iowa, New Mexico, Seattle, Utah, and Atlanta). [Expected survival rates](#) are derived from the U.S. Annual Life Tables.

Table 2.11  
All Cancer Sites (Invasive)

SEER<sup>a</sup> Relative Survival (Percent)  
By Year of Diagnosis

All Races, Females

Year of Diagnosis

	1975- 1979	1980- 1984	1985- 1989	1990- 1994	1995	1996	1997	1998	1999	2000	2001	2002	2003	2004	2005	2006	2007	2008	2009	2010	2011	2012	2013	2014
Survival Time																								
1-year	74.6	74.9	76.7	77.5	77.9	77.9	78.6	79.3	79.4	79.5	80.0	80.4	80.0	80.4	80.8	80.9	81.4	81.9	82.3	82.3	82.8	83.2	83.5	83.3
2-year	66.0	66.2	68.7	70.0	70.8	71.0	71.6	72.6	73.0	73.0	73.9	74.4	73.9	74.3	74.6	75.2	75.6	76.1	76.5	76.6	77.1	77.2	77.8	
3-year	61.2	61.2	64.2	65.9	66.9	67.3	67.9	69.0	69.4	69.6	70.2	70.9	70.5	70.9	71.3	71.9	72.1	72.6	73.0	73.2	73.8	73.8		
4-year	57.9	57.9	61.3	63.2	64.3	64.8	65.3	66.5	67.1	67.3	68.0	68.5	68.1	68.4	69.1	69.6	69.9	70.5	70.8	70.8	71.5			
5-year	55.6	55.3	59.0	61.2	62.4	62.8	63.5	64.6	65.2	65.7	66.2	66.6	66.2	66.6	67.3	67.8	68.2	68.5	69.2	69.0				
6-year	53.6	53.4	57.3	59.6	60.9	61.3	62.0	63.2	63.8	64.4	64.9	65.3	65.0	65.2	66.0	66.6	66.9	67.2	67.7					
7-year	52.1	51.7	55.8	58.2	59.6	60.2	60.9	62.1	62.6	63.2	63.7	64.1	63.8	64.2	65.0	65.5	65.9	65.9						
8-year	50.8	50.3	54.6	57.1	58.6	59.1	59.9	61.2	61.6	62.1	62.6	63.1	62.8	63.3	64.1	64.5	64.8							
9-year	49.7	49.2	53.5	56.1	57.6	58.1	58.9	60.2	60.8	61.3	61.7	62.2	62.0	62.4	63.2	63.7								
10-year	48.7	48.1	52.5	55.2	56.9	57.3	58.1	59.2	60.0	60.6	61.0	61.6	61.1	61.6	62.3									
11-year	47.8	47.1	51.7	54.4	56.1	56.7	57.4	58.6	59.1	59.8	60.3	61.0	60.4	60.9										
12-year	47.0	46.3	50.9	53.7	55.3	56.1	56.8	58.1	58.5	59.1	59.4	60.2	59.8											
13-year	46.4	45.6	50.1	53.0	54.5	55.3	56.2	57.3	57.8	58.5	58.8	59.6												
14-year	45.7	44.9	49.5	52.4	54.0	54.6	55.7	56.7	57.0	58.0	58.1													
15-year	45.1	44.3	48.8	51.8	53.4	54.1	55.1	56.0	56.6	57.3														
16-year	44.6	43.6	48.3	51.3	52.8	53.5	54.3	55.4	55.8															
17-year	44.1	43.0	47.8	50.7	52.2	52.9	54.0	54.9																
18-year	43.6	42.5	47.3	50.1	51.5	52.3	53.4																	
19-year	43.2	42.0	46.9	49.5	51.0	51.6																		
20-year	42.7	41.5	46.4	49.0	50.5																			
21-year	42.2	41.0	46.0	48.4																				
22-year	41.8	40.6	45.5																					
23-year	41.3	40.1	45.1																					
24-year	40.9	39.7	44.6																					
25-year	40.4	39.2	44.1																					
26-year	40.0	38.9	43.6																					
27-year	39.7	38.4																						
28-year	39.3	37.9																						
29-year	38.9	37.6																						
30-year	38.6	37.1																						

<sup>a</sup> Based on the SEER 9 areas (San Francisco, Connecticut, Detroit, Hawaii, Iowa, New Mexico, Seattle, Utah, and Atlanta). [Expected survival rates](#) are derived from the U.S. Annual Life Tables.

Table 2.12  
All Cancer Sites (Invasive)

Risk of Being Diagnosed With Cancer in 10, 20 and 30 Years,  
Lifetime Risk of Being Diagnosed with Cancer Given Alive and Cancer-Free at Current Age, and  
Lifetime Risk of Dying from Cancer Given Alive at Current Age  
Both Sexes, 2013-2015 By Race/Ethnicity

Race/ Ethnicity	Current Age	Risk of Being Diagnosed with Cancer				Risk of Dying from Cancer	Race/ Ethnicity	Current Age	Risk of Being Diagnosed with Cancer				Risk of Dying from Cancer
		+10 yrs	+20 yrs	+30 yrs	Ever				+10 yrs	+20 yrs	+30 yrs	Ever	
All Races	0	0.18	0.37	0.83	38.38	19.95	Asian/ Pacific Islander	0	0.16	0.32	0.64	33.77	18.07
	10	0.19	0.66	1.77	38.67	20.16		10	0.16	0.49	1.34	33.90	18.19
	20	0.47	1.58	4.16	38.66	20.20		20	0.33	1.19	3.32	33.84	18.20
	30	1.13	3.73	9.46	38.68	20.34		30	0.86	3.01	7.13	33.74	18.22
	40	2.67	8.53	18.43	38.41	20.46		40	2.17	6.35	13.45	33.30	18.20
	50	6.14	16.52	28.01	37.45	20.44		50	4.30	11.62	20.73	32.07	18.01
	60	11.53	24.30	32.55	34.78	19.83		60	7.77	17.47	25.65	29.52	17.37
	70	15.71	25.86	-	28.60	17.87		70	10.95	20.20	-	24.57	15.96
80	15.00	-	-	19.05	13.92	80	11.72	-	-	17.26	13.17		
White	0	0.19	0.39	0.90	38.61	20.07	American Indian/ Alaska Native <sup>a</sup>	0	0.13	0.24	0.55	28.31	16.49
	10	0.21	0.72	1.87	38.85	20.26		10	0.11	0.43	1.22	28.53	16.70
	20	0.51	1.67	4.28	38.83	20.29		20	0.32	1.11	2.76	28.58	16.77
	30	1.18	3.82	9.53	38.82	20.42		30	0.81	2.49	6.52	28.80	17.02
	40	2.70	8.55	18.48	38.51	20.54		40	1.74	5.90	12.63	28.92	17.37
	50	6.13	16.54	28.20	37.54	20.53		50	4.40	11.52	20.21	28.75	17.79
	60	11.55	24.50	32.77	34.87	19.91		60	7.89	17.51	24.75	26.97	17.67
	70	15.91	26.08	-	28.66	17.94		70	11.53	20.22	-	22.87	16.42
80	15.12	-	-	18.95	13.92	80	12.45	-	-	16.26	12.97		
Black	0	0.13	0.26	0.57	35.18	20.09	Hispanic <sup>b</sup>	0	0.16	0.35	0.75	35.07	17.25
	10	0.14	0.45	1.36	35.79	20.49		10	0.19	0.59	1.47	35.27	17.40
	20	0.32	1.23	3.75	35.85	20.56		20	0.40	1.29	3.25	35.23	17.42
	30	0.93	3.49	9.84	36.09	20.77		30	0.90	2.88	7.33	35.19	17.48
	40	2.63	9.15	19.64	36.11	20.97		40	2.02	6.54	14.74	34.88	17.51
	50	6.90	18.02	28.12	35.46	21.06		50	4.68	13.17	23.32	34.00	17.42
	60	12.77	24.38	30.85	32.81	20.45		60	9.18	20.17	28.42	31.72	16.94
	70	15.25	23.75	-	26.32	18.37		70	12.92	22.62	-	26.50	15.51
80	13.44	-	-	17.51	14.59	80	13.22	-	-	18.49	12.57		

Devcan 6.7.6, April 2018, National Cancer Institute (<https://surveillance.cancer.gov/devcan/>).

Source: Incidence data are from the SEER 18 areas (San Francisco, Connecticut, Detroit, Hawaii, Iowa, New Mexico, Seattle, Utah, Atlanta, San Jose-Monterey, Los Angeles, Alaska Native Registry, Rural Georgia, California excluding SF/SJM/LA, Kentucky, Louisiana, New Jersey, and Georgia excluding ATL/RG). Mortality data are from the NCHS public use data file for the total US.

<sup>a</sup> Underlying incidence and mortality data for American Indian/Alaska Native are based on the CHSDA (Contract Health Service Delivery Area) counties.

<sup>b</sup> Hispanic is not mutually exclusive from whites, blacks, Asian/Pacific Islanders, and American Indians/Alaska Natives. Underlying incidence data for Hispanics are based on NHIA and exclude cases from the Alaska Native Registry.

- Statistic could not be calculated.

A percent of 0.00 represents a value that is below 0.005.

Table 2.13  
All Cancer Sites (Invasive)

Risk of Being Diagnosed With Cancer in 10, 20 and 30 Years,  
Lifetime Risk of Being Diagnosed with Cancer Given Alive and Cancer-Free at Current Age, and  
Lifetime Risk of Dying from Cancer Given Alive at Current Age  
Males, 2013-2015 By Race/Ethnicity

Race/ Ethnicity	Current Age	Risk of Being Diagnosed with Cancer				Risk of Dying from Cancer	Race/ Ethnicity	Current Age	Risk of Being Diagnosed with Cancer				Risk of Dying from Cancer
		+10 yrs	+20 yrs	+30 yrs	Ever				+10 yrs	+20 yrs	+30 yrs	Ever	
All Races	0	0.18	0.38	0.78	39.26	21.66	Asian/ Pacific Islander	0	0.15	0.33	0.60	33.93	20.40
	10	0.20	0.61	1.37	39.60	21.92		10	0.18	0.45	0.96	34.09	20.55
	20	0.41	1.18	3.04	39.63	21.99		20	0.28	0.79	2.04	34.04	20.57
	30	0.78	2.67	8.36	39.84	22.22		30	0.51	1.78	5.30	34.03	20.63
	40	1.93	7.76	18.93	39.97	22.47		40	1.28	4.84	12.56	33.89	20.66
	50	6.10	17.79	30.44	39.81	22.70		50	3.65	11.56	21.78	33.41	20.58
	60	13.16	27.40	35.88	37.95	22.40		60	8.42	19.30	27.98	31.67	20.08
	70	18.32	29.22	-	31.88	20.71		70	12.58	22.61	-	26.88	18.75
80	17.43	-	-	21.68	16.95	80	13.36	-	-	19.05	15.97		
White	0	0.19	0.40	0.85	39.08	21.75	American Indian/ Alaska Native <sup>a</sup>	0	0.14	0.27	0.56	27.36	17.48
	10	0.21	0.66	1.47	39.36	21.97		10	0.13	0.43	1.00	27.62	17.73
	20	0.45	1.26	3.13	39.37	22.03		20	0.30	0.88	2.12	27.68	17.82
	30	0.82	2.72	8.30	39.54	22.25		30	0.59	1.87	5.59	28.05	18.21
	40	1.94	7.66	18.64	39.63	22.50		40	1.32	5.19	12.18	28.54	18.74
	50	5.98	17.47	30.17	39.44	22.71		50	4.12	11.55	21.00	28.96	19.50
	60	12.92	27.18	35.66	37.60	22.40		60	8.34	18.95	26.06	27.88	19.78
	70	18.26	29.09	-	31.58	20.69		70	13.12	21.91	-	24.16	18.95
80	17.37	-	-	21.36	16.87	80	13.41	-	-	16.84	15.18		
Black	0	0.12	0.26	0.52	36.64	22.02	Hispanic <sup>b</sup>	0	0.17	0.37	0.73	36.09	19.49
	10	0.14	0.41	1.01	37.34	22.50		10	0.20	0.57	1.15	36.32	19.67
	20	0.27	0.88	2.92	37.48	22.62		20	0.37	0.96	2.23	36.31	19.71
	30	0.63	2.71	9.79	38.01	22.99		30	0.60	1.89	6.04	36.41	19.84
	40	2.15	9.46	22.25	38.56	23.43		40	1.31	5.54	14.56	36.44	19.97
	50	7.78	21.39	32.33	38.73	23.88		50	4.37	13.69	25.29	36.29	20.08
	60	16.11	29.05	34.98	36.63	23.79		60	10.18	22.85	31.59	34.86	19.87
	70	18.53	27.01	-	29.37	22.23		70	15.40	26.02	-	29.99	18.68
80	15.08	-	-	19.28	19.00	80	15.52	-	-	21.32	15.78		

Devcan 6.7.6, April 2018, National Cancer Institute (<https://surveillance.cancer.gov/devcan/>).

Source: Incidence data are from the SEER 18 areas (San Francisco, Connecticut, Detroit, Hawaii, Iowa, New Mexico, Seattle, Utah, Atlanta, San Jose-Monterey, Los Angeles, Alaska Native Registry, Rural Georgia, California excluding SF/SJM/LA, Kentucky, Louisiana, New Jersey, and Georgia excluding ATL/RG). Mortality data are from the NCHS public use data file for the total US.

<sup>a</sup> Underlying incidence and mortality data for American Indian/Alaska Native are based on the CHSDA (Contract Health Service Delivery Area) counties.

<sup>b</sup> Hispanic is not mutually exclusive from whites, blacks, Asian/Pacific Islanders, and American Indians/Alaska Natives. Underlying incidence data for Hispanics are based on NHIA and exclude cases from the Alaska Native Registry.

- Statistic could not be calculated.

A percent of 0.00 represents a value that is below 0.005.

Table 2.14  
All Cancer Sites (Invasive)

Risk of Being Diagnosed With Cancer in 10, 20 and 30 Years,  
Lifetime Risk of Being Diagnosed with Cancer Given Alive and Cancer-Free at Current Age, and  
Lifetime Risk of Dying from Cancer Given Alive at Current Age  
Females, 2013-2015 By Race/Ethnicity

Race/ Ethnicity	Current Age	Risk of Being Diagnosed with Cancer				Risk of Dying from Cancer	Race/ Ethnicity	Current Age	Risk of Being Diagnosed with Cancer				Risk of Dying from Cancer
		+10 yrs	+20 yrs	+30 yrs	Ever				+10 yrs	+20 yrs	+30 yrs	Ever	
All Races	0	0.17	0.36	0.89	37.73	18.53	Asian/ Pacific Islander	0	0.17	0.31	0.69	33.81	16.30
	10	0.19	0.72	2.18	37.98	18.71		10	0.14	0.52	1.69	33.91	16.39
	20	0.53	2.00	5.29	37.93	18.73		20	0.38	1.55	4.46	33.85	16.39
	30	1.48	4.80	10.57	37.76	18.78		30	1.17	4.10	8.76	33.65	16.39
	40	3.40	9.29	17.99	37.08	18.78		40	2.97	7.70	14.26	32.95	16.33
	50	6.18	15.30	25.72	35.33	18.57		50	4.89	11.69	19.86	31.04	16.05
	60	10.01	21.44	29.56	31.98	17.74		60	7.23	15.90	23.74	27.78	15.34
	70	13.51	23.12	-	25.98	15.71		70	9.61	18.31	-	22.78	13.95
80	13.34	-	-	17.30	11.94	80	10.60	-	-	16.06	11.33		
White	0	0.18	0.38	0.95	38.38	18.67	American Indian/ Alaska Native <sup>a</sup>	0	0.12	0.21	0.54	29.38	15.62
	10	0.20	0.78	2.31	38.59	18.83		10	0.09	0.42	1.44	29.56	15.80
	20	0.58	2.11	5.48	38.53	18.84		20	0.33	1.36	3.43	29.59	15.85
	30	1.55	4.95	10.81	38.33	18.89		30	1.04	3.14	7.46	29.65	15.98
	40	3.48	9.47	18.36	37.62	18.89		40	2.16	6.60	13.12	29.39	16.16
	50	6.29	15.62	26.31	35.84	18.69		50	4.67	11.52	19.52	28.62	16.29
	60	10.24	21.98	30.15	32.43	17.85		60	7.50	16.25	23.64	26.22	15.89
	70	13.90	23.57	-	26.27	15.81		70	10.22	18.85	-	21.86	14.43
80	13.54	-	-	17.33	11.96	80	11.79	-	-	15.90	11.48		
Black	0	0.14	0.27	0.63	33.96	18.73	Hispanic <sup>b</sup>	0	0.16	0.33	0.76	34.63	15.61
	10	0.13	0.50	1.69	34.49	19.06		10	0.17	0.61	1.81	34.81	15.73
	20	0.37	1.57	4.53	34.48	19.09		20	0.44	1.65	4.33	34.74	15.73
	30	1.21	4.20	9.87	34.45	19.16		30	1.22	3.92	8.68	34.55	15.74
	40	3.06	8.87	17.33	34.01	19.18		40	2.75	7.59	15.06	33.89	15.68
	50	6.12	15.06	24.45	32.65	18.99		50	5.01	12.76	21.71	32.27	15.43
	60	10.00	20.51	27.45	29.70	18.07		60	8.30	17.91	25.83	29.23	14.76
	70	12.92	21.44	-	24.19	15.91		70	10.98	20.03	-	23.91	13.29
80	12.46	-	-	16.49	12.34	80	11.70	-	-	16.71	10.61		

Devcan 6.7.6, April 2018, National Cancer Institute (<https://surveillance.cancer.gov/devcan/>).

Source: Incidence data are from the SEER 18 areas (San Francisco, Connecticut, Detroit, Hawaii, Iowa, New Mexico, Seattle, Utah, Atlanta, San Jose-Monterey, Los Angeles, Alaska Native Registry, Rural Georgia, California excluding SF/SJM/LA, Kentucky, Louisiana, New Jersey, and Georgia excluding ATL/RG). Mortality data are from the NCHS public use data file for the total US.

<sup>a</sup> Underlying incidence and mortality data for American Indian/Alaska Native are based on the CHSDA (Contract Health Service Delivery Area) counties.

<sup>b</sup> Hispanic is not mutually exclusive from whites, blacks, Asian/Pacific Islanders, and American Indians/Alaska Natives. Underlying incidence data for Hispanics are based on NHIA and exclude cases from the Alaska Native Registry.

- Statistic could not be calculated.

A percent of 0.00 represents a value that is below 0.005.

Table 2.15  
All Cancer Sites (Invasive)

SEER Incidence and U.S. Mortality  
Age-Adjusted Rates and Trends<sup>a</sup>  
By Race/Ethnicity and Sex

SEER Incidence	SEER 18 Areas <sup>b</sup>			SEER 13 Areas <sup>b</sup>			SEER 9 Areas <sup>b</sup>		
	Rate 2011-2015			Trend 2006-2015 <sup>c</sup>			Trend 2006-2015 <sup>d</sup>		
	Rate per 100,000 persons			AAPC (%)			AAPC (%)		
	Total	Males	Females	Total	Males	Females	Total	Males	Females
RACE/ETHNICITY									
All Races	439.2	483.0	409.9	-1.2*	-2.3*	-0.3	-1.1*	-2.1*	-0.2*
White	448.8	488.5	423.1	-1.2*	-2.2*	-0.3	-1.1*	-2.0*	-0.2*
White Hispanic <sup>e</sup>	346.0	370.5	334.6	-1.3*	-2.7*	0.4*	-	-	-
White Non-Hispanic <sup>e</sup>	469.6	510.7	442.3	-1.1*	-2.1*	-0.2*	-	-	-
Black	453.4	535.0	397.8	-1.9*	-3.2*	-0.7*	-1.8*	-3.0*	-0.6
Asian/Pacific Islander	297.9	303.5	298.3	-1.2*	-2.5*	0.1	-	-	-
Amer Ind/Alaska Nat <sup>f</sup>	315.1	325.6	311.4	0.0	-0.5*	0.5*	-	-	-
Hispanic <sup>e</sup>	336.3	362.9	322.9	-1.2*	-2.6*	0.2*	-	-	-
U.S. Mortality <sup>g</sup>									
	Rate 2011-2015			Trend 2006-2015 <sup>h</sup>					
	Rate per 100,000 persons			AAPC (%)					
	Total	Males	Females	Total	Males	Females			
RACE/ETHNICITY									
All Races	163.5	196.8	139.6	-1.5*	-1.8*	-1.4*			
White	163.8	196.4	140.0	-1.4*	-1.7*	-1.3*			
White Hispanic <sup>e</sup>	121.6	148.4	102.7	-1.1*	-1.3*	-0.9*			
White Non-Hispanic <sup>e</sup>	167.8	200.6	143.6	-1.4*	-1.6*	-1.3*			
Black	189.8	239.9	159.0	-2.1*	-2.7*	-1.6*			
Asian/Pacific Islander	102.0	121.2	88.3	-1.3*	-1.6*	-1.0*			
Amer Ind/Alaska Nat									
Total U.S.	110.3	131.9	94.1	-2.0*	-1.4*	-2.1*			
CHSDA Counties	150.4	181.5	127.6	-1.1*	-0.4*	-1.4*			
Non-CHSDA Counties	66.9	79.5	57.3	-2.7*	-3.3*	-2.5*			
Hispanic <sup>e</sup>	115.0	140.6	97.1	-1.2*	-1.6*	-1.0*			

The AAPC is the Average Annual Percent Change over the time interval. The AAPCs are calculated by the Joinpoint Regression Program Version 4.6, February 2018, National Cancer Institute.

- Statistic not shown. Rate based on less than 16 cases for the time interval.

Trend based on less than 10 cases for at least one year within the time interval.

a Rates are age-adjusted to the 2000 US Std Population (19 age groups - Census P25-1130). Trends are based on rates age-adjusted to the 2000 US Std Population (19 age groups - Census P25-1130).

b The SEER 9 areas are San Francisco, Connecticut, Detroit, Hawaii, Iowa, New Mexico, Seattle, Utah, and Atlanta.

The SEER 13 areas comprise the SEER 9 areas plus San Jose-Monterey, Los Angeles, the Alaska Native Registry, and Rural Georgia.

The SEER 18 areas comprise the SEER 13 areas plus California excluding SF/SJM/LA, Kentucky, Louisiana, New Jersey, and Georgia excluding ATL/RG.

c The 2006-2015 AAPC estimates are based on a Joinpoint analysis with up to 4 Joinpoints over diagnosis years 1992-2015.

d The 2006-2015 AAPC estimates are based on a Joinpoint analysis with up to 5 Joinpoints over diagnosis years 1975-2015.

e Hispanic and Non-Hispanic are not mutually exclusive from whites, blacks, Asian/Pacific Islanders, and American Indians/Alaska Natives. Incidence data for Hispanics and Non-Hispanics are based on NHIA and exclude cases from the Alaska Native Registry. The 2006-2015 Hispanic and Non-Hispanic mortality trends exclude deaths from New Hampshire and Oklahoma.

f Incidence data for American Indian/Alaska Native are based on the CHSDA (Contract Health Service Delivery Area) counties.

g US Mortality Files, National Center for Health Statistics, CDC.

h The 2006-2015 mortality AAPCs are based on a Joinpoint analysis using years of death 1992-2015.

\* The APC is significantly different from zero (p<.05).

Table 2.16  
All Cancer Sites (Invasive)

Age-Adjusted SEER Incidence Rates<sup>a</sup>  
By Registry, Race and Sex

	All Races			Whites			Blacks		
	Total	Males	Females	Total	Males	Females	Total	Males	Females
<u>SEER Incidence Rates<sup>a</sup>, 2011-2015</u>									
California	403.97	438.14	382.12	417.49	449.27	397.85	418.93	477.41	377.67
Greater Bay Area	406.77	441.82	384.60	435.69	471.02	413.79	446.20	510.02	399.55
San Francisco-Oakland	411.57	446.57	389.49	439.22	473.46	418.29	455.42	524.94	405.30
San Jose-Monterey	397.62	432.94	375.04	429.52	466.67	406.02	390.76	426.68	360.98
Los Angeles	381.68	412.80	363.49	391.43	418.66	376.76	419.65	476.83	382.57
Greater California	413.12	448.11	389.89	422.51	454.82	401.74	405.94	462.74	362.27
Connecticut	470.75	507.59	448.53	472.28	504.41	454.28	429.17	503.80	380.53
Detroit	495.36	555.87	454.39	497.29	547.45	465.73	509.27	609.52	441.42
Georgia	454.60	519.50	409.82	461.72	516.76	424.53	452.96	550.19	390.63
Atlanta	449.77	513.10	408.60	463.36	512.59	434.45	453.80	551.18	393.74
Rural Georgia	450.09	519.30	401.74	451.99	503.74	415.04	448.30	560.32	379.32
Greater Georgia	457.72	523.08	411.73	461.93	519.56	421.48	453.36	548.86	390.60
Hawaii	408.73	429.22	399.48	479.13	507.17	455.85	422.32	489.01	333.64
Iowa	465.26	512.97	433.33	464.48	510.14	434.30	487.25	551.39	438.95
Kentucky	509.89	570.20	468.81	508.56	564.02	471.55	491.62	562.12	444.42
Louisiana	475.92	557.24	415.61	473.55	544.78	420.62	493.35	605.06	415.36
New Jersey	477.52	525.19	447.61	488.04	530.03	463.23	441.48	514.70	396.19
New Mexico	369.66	386.50	359.93	375.32	390.06	367.33	312.99	350.32	281.24
Seattle-Puget Sound	464.18	501.08	440.42	475.92	510.83	453.77	447.16	510.05	391.16
Utah	400.12	438.76	371.34	402.83	440.90	374.50	385.85	442.47	324.44
SEER 9 Areas <sup>b</sup>	444.92	485.63	418.16	455.51	492.46	432.20	464.98	550.19	406.80
SEER 13 Areas <sup>b</sup>	428.19	466.66	403.42	440.55	475.85	418.70	452.94	530.71	400.06
SEER 18 Areas <sup>b</sup>	439.18	483.00	409.94	448.76	488.48	423.12	453.42	535.03	397.81

<sup>a</sup> Rates are per 100,000 and are age-adjusted to the 2000 US Std Population (19 age groups - Census P25-1130)

<sup>b</sup> The SEER 9 areas are San Francisco, Connecticut, Detroit, Hawaii, Iowa, New Mexico, Seattle, Utah and Atlanta.

The SEER 13 areas comprise the SEER 9 areas plus San Jose-Monterey, Los Angeles, the Alaska Native Registry and Rural Georgia.

The SEER 18 areas comprise the SEER 13 areas plus California excluding SF/SJM/LA, Kentucky, Louisiana, New Jersey and Georgia excluding ATL/RG.

- Statistic not shown. Rate based on less than 16 cases for the time interval.



Table 2.17  
All Cancer Sites (Invasive)

Age-Adjusted SEER Death Rates<sup>a</sup>  
By Registry, Race and Sex

	All Races			Whites			Blacks		
	Total	Males	Females	Total	Males	Females	Total	Males	Females
<u>SEER Death Rates<sup>a</sup>, 2011-2015</u>									
California	147.49	174.13	128.44	153.27	180.18	133.85	184.74	220.80	162.14
Greater Bay Area	137.28	161.37	120.27	144.90	168.66	128.20	189.15	228.94	163.88
San Francisco-Oakland	139.63	163.48	122.87	145.61	168.52	129.52	194.68	238.49	166.84
San Jose-Monterey	132.65	157.29	115.06	143.53	168.80	125.73	153.68	173.83	141.95
Los Angeles	142.96	168.67	125.35	146.31	171.65	128.62	189.57	225.69	168.86
Greater California	153.09	180.99	132.68	158.21	186.62	137.33	178.13	211.85	154.61
Connecticut	150.11	178.43	130.73	151.29	179.27	132.01	154.79	193.73	131.39
Detroit	176.02	209.21	153.61	170.93	202.18	149.55	204.04	251.45	174.48
Georgia	167.63	209.16	138.94	165.12	203.58	137.24	183.78	243.91	149.33
Atlanta	152.94	189.12	129.86	144.72	176.08	123.81	177.64	234.84	146.95
Rural Georgia	183.88	239.68	145.23	168.27	213.40	135.24	216.10	312.93	160.80
Greater Georgia	174.39	217.83	143.48	172.53	213.39	142.27	188.09	248.59	151.86
Hawaii	136.07	164.36	114.61	158.78	181.68	137.70	145.52	178.90	107.08
Iowa	167.80	204.30	141.77	167.80	204.35	141.74	202.44	231.18	183.80
Kentucky	199.32	245.77	165.87	199.92	246.80	165.86	209.13	256.38	180.02
Louisiana	187.78	233.56	154.58	177.34	218.10	147.13	220.45	287.33	176.45
New Jersey	157.69	186.22	138.99	161.40	190.51	142.00	177.10	216.97	155.09
New Mexico	145.01	173.10	123.56	148.00	176.25	126.15	151.12	187.40	123.91
Seattle-Puget Sound	155.97	183.63	135.84	159.00	185.77	139.43	173.40	215.71	140.24
Utah	127.23	148.88	110.33	127.42	149.05	110.54	147.35	157.04	136.76
SEER 9 Areas <sup>b</sup>	152.42	181.44	131.85	154.10	182.38	133.82	184.58	231.19	155.96
SEER 13 Areas <sup>b</sup>	149.55	177.68	129.71	152.15	179.66	132.48	185.49	229.76	158.56
SEER 18 Areas <sup>b</sup>	157.81	188.84	135.74	160.40	191.04	138.31	189.61	237.68	159.83
Total U.S.	163.53	196.77	139.57	163.83	196.37	139.98	189.79	239.89	159.03

<sup>a</sup> US Mortality Files, National Center for Health Statistics, Centers for Disease Control and Prevention. Rates are per 100,000 and are age-adjusted to the 2000 US Std Population (19 age groups - Census P25-1130).

<sup>b</sup> The SEER 9 areas are San Francisco, Connecticut, Detroit, Hawaii, Iowa, New Mexico, Seattle, Utah and Atlanta. The SEER 13 areas comprise the SEER 9 areas plus San Jose-Monterey, Los Angeles, the Alaska Native Registry and Rural Georgia. The SEER 18 areas comprise the SEER 13 areas plus California excluding SF/SJM/LA, Kentucky, Louisiana, New Jersey and Georgia excluding ATL/RG.

- Statistic not shown. Rate based on less than 16 cases for the time interval.

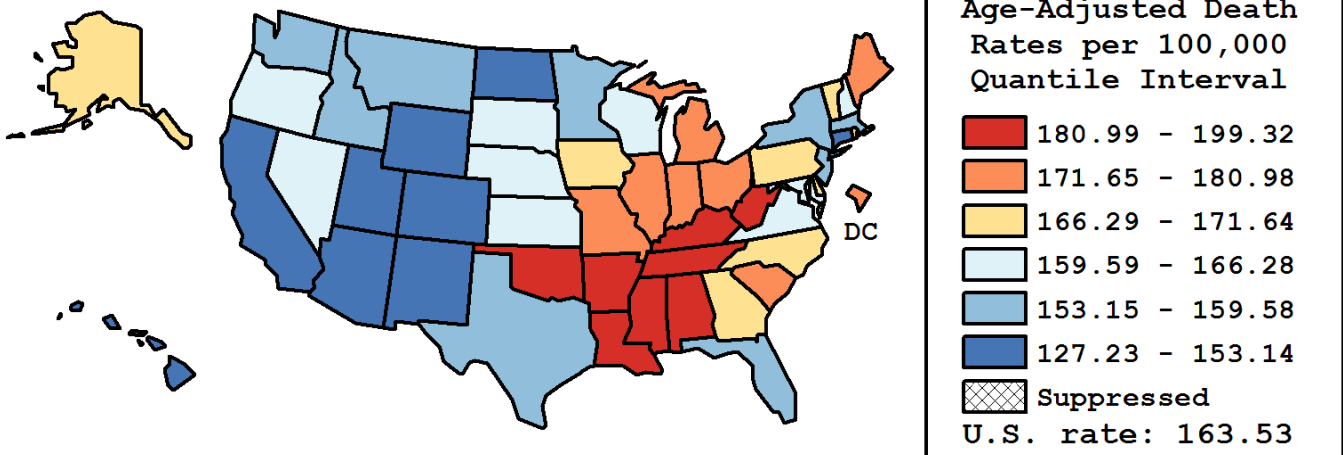
Table 2.18  
All Cancer Sites (Invasive)

Age-Adjusted Cancer Death<sup>a</sup> Rates by State, All Races, 2011-2015

Males and Females

State	Rate	SE	Rank(CI) <sup>d</sup>	PD
TOTAL U.S.	163.53	0.10		
High Five States				
Kentucky	199.32	0.90	01(01,01)	21.89 <sup>c</sup>
Mississippi	194.88	1.10	02(02,03)	19.17 <sup>c</sup>
West Virginia	193.12	1.27	03(02,04)	18.10 <sup>c</sup>
Louisiana	187.78	0.88	04(03,06)	14.83 <sup>c</sup>
Arkansas	187.52	1.05	05(04,07)	14.67 <sup>c</sup>
Low Five States				
Arizona	145.20	0.62	47(46,48)	-11.21 <sup>c</sup>
New Mexico	145.01	1.12	48(46,48)	-11.32 <sup>c</sup>
Colorado	139.60	0.75	49(49,49)	-14.63 <sup>c</sup>
Hawaii	136.07	1.28	50(50,50)	-16.79 <sup>c</sup>
Utah	127.23	1.06	51(51,51)	-22.19 <sup>c</sup>

State	Rate	SE	Rank(CI) <sup>d</sup>	PD	State	Rate	SE	Rank(CI) <sup>d</sup>	PD
Alabama	181.35	0.81	08(07,10)	10.90 <sup>c</sup>	Montana	157.26	1.59	37(34,44)	-3.83
Alaska	168.37	2.63	20(12,31)	2.96	Nebraska	161.23	1.25	32(28,37)	-1.41
Arizona	145.20	0.62	47(46,48)	-11.21 <sup>c</sup>	Nevada	164.08	1.08	29(21,32)	0.34
Arkansas	187.52	1.05	05(04,07)	14.67 <sup>c</sup>	New Hampshire	164.93	1.46	27(21,35)	0.86
California	147.49	0.28	46(45,47)	-9.81 <sup>c</sup>	New Jersey	157.69	0.56	36(33,37)	-3.57
Colorado	139.60	0.75	49(49,49)	-14.63 <sup>c</sup>	New Mexico	145.01	1.12	48(46,48)	-11.32 <sup>c</sup>
Connecticut	150.11	0.84	44(42,45)	-8.20 <sup>c</sup>	New York	154.98	0.37	41(38,43)	-5.23 <sup>c</sup>
Delaware	171.12	1.76	18(12,23)	4.64	North Carolina	169.28	0.56	19(17,22)	3.52
D.C.	176.85	2.45	12(08,20)	8.14 <sup>c</sup>	North Dakota	153.14	1.95	43(37,46)	-6.35 <sup>c</sup>
Florida	154.84	0.34	42(38,43)	-5.31 <sup>c</sup>	Ohio	179.34	0.51	10(09,12)	9.67 <sup>c</sup>
Georgia	167.63	0.60	22(20,26)	2.51	Oklahoma	185.95	0.94	06(05,08)	13.71 <sup>c</sup>
Hawaii	136.07	1.28	50(50,50)	-16.79 <sup>c</sup>	Oregon	164.77	0.85	28(22,32)	0.76
Idaho	155.05	1.36	40(37,45)	-5.18 <sup>c</sup>	Pennsylvania	171.64	0.46	17(15,20)	4.96
Illinois	171.82	0.50	16(15,20)	5.07 <sup>c</sup>	Rhode Island	166.78	1.62	24(16,31)	1.99
Indiana	180.98	0.71	09(08,11)	10.67 <sup>c</sup>	South Carolina	174.53	0.81	14(11,16)	6.73 <sup>c</sup>
Iowa	167.80	0.95	21(20,29)	2.61	South Dakota	160.27	1.81	33(24,39)	-1.99
Kansas	166.28	1.02	25(21,32)	1.68	Tennessee	185.38	0.71	07(04,07)	13.36 <sup>c</sup>
Kentucky	199.32	0.90	01(01,01)	21.89 <sup>c</sup>	Texas	156.39	0.36	38(36,39)	-4.37
Louisiana	187.78	0.88	04(03,06)	14.83 <sup>c</sup>	Utah	127.23	1.06	51(51,51)	-22.19 <sup>c</sup>
Maine	176.39	1.41	13(10,18)	7.86 <sup>c</sup>	Vermont	167.57	2.09	23(14,31)	2.47
Maryland	162.32	0.72	31(26,33)	-0.74	Virginia	163.76	0.62	30(25,32)	0.14
Massachusetts	159.58	0.64	34(31,36)	-2.42	Washington	159.27	0.66	35(32,37)	-2.60
Michigan	172.74	0.55	15(13,18)	5.63 <sup>c</sup>	West Virginia	193.12	1.27	03(02,04)	18.10 <sup>c</sup>
Minnesota	155.35	0.72	39(37,43)	-5.00 <sup>c</sup>	Wisconsin	165.22	0.70	26(21,30)	1.04
Mississippi	194.88	1.10	02(02,03)	19.17 <sup>c</sup>	Wyoming	147.59	2.21	45(37,48)	-9.74 <sup>c</sup>
Missouri	178.14	0.71	11(09,13)	8.94 <sup>c</sup>					



<sup>a</sup> US Mortality Files, National Center for Health Statistics, Centers for Disease Control and Prevention. Rates are per 100,000 and are age-adjusted to the 2000 US Std Population (19 age groups - Census P25-1130).

<sup>b</sup> Difference between state rate and total U.S. rate is statistically significant ( $p \leq .0002$ ).

<sup>c</sup> Absolute percent difference between state rate and total U.S. rate is 5% or more.

<sup>d</sup> Rank of state level death rate and the 95% confidence intervals (low, high) for the rank.

SE Standard error of the rate.

PD Percent difference between state rate and total U.S. rate.

- Statistic not shown. Rate based on less than 16 cases for the time interval.

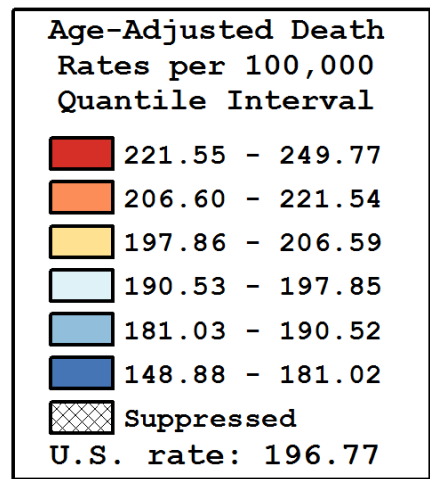
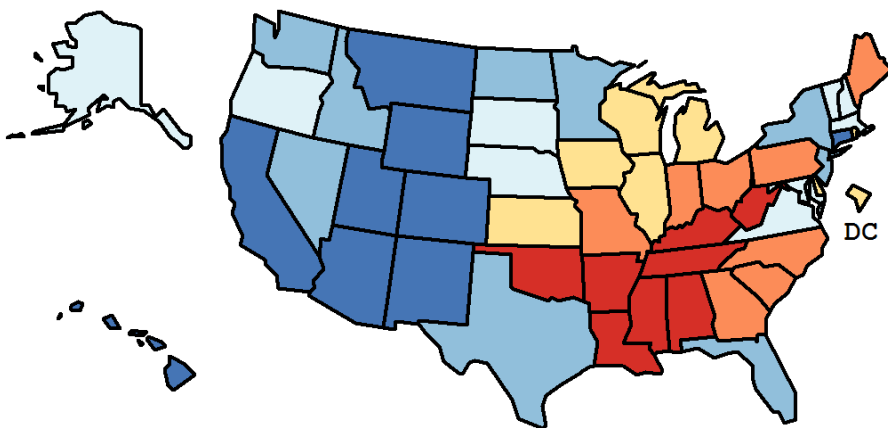
Table 2.19  
All Cancer Sites (Invasive)

Age-Adjusted Cancer Death<sup>a</sup> Rates by State, All Races, 2011-2015

Males

State	Rate	SE	Rank(CI) <sup>d</sup>	PD
TOTAL U.S.	196.77	0.16		
High Five States				
Mississippi	249.77	1.93	01(01,02)	26.94 <sup>c</sup>
Kentucky	245.77	1.54	02(01,02)	24.90 <sup>c</sup>
Arkansas	234.24	1.77	03(03,07)	19.04 <sup>c</sup>
Louisiana	233.56	1.52	04(03,07)	18.70 <sup>c</sup>
West Virginia	233.49	2.11	05(03,07)	18.66 <sup>c</sup>
Low Five States				
Wyoming	170.62	3.52	47(40,49)	-13.29 <sup>c</sup>
Arizona	170.61	0.99	48(45,48)	-13.29 <sup>c</sup>
Hawaii	164.36	2.10	49(48,50)	-16.47 <sup>c</sup>
Colorado	163.82	1.23	50(49,50)	-16.74 <sup>c</sup>
Utah	148.88	1.72	51(51,51)	-24.34 <sup>c</sup>

State	Rate	SE	Rank(CI) <sup>d</sup>	PD	State	Rate	SE	Rank(CI) <sup>d</sup>	PD
Alabama	231.49	1.42	06(03,07)	17.65 <sup>c</sup>	Montana	181.02	2.52	43(38,47)	-8.00 <sup>c</sup>
Alaska	196.03	4.31	28(13,38)	-0.37	Nebraska	194.94	2.07	29(23,37)	-0.93
Arizona	170.61	0.99	48(45,48)	-13.29 <sup>c</sup>	Nevada	188.77	1.73	35(27,39)	-4.06
Arkansas	234.24	1.77	03(03,07)	19.04 <sup>c</sup>	New Hampshire	196.34	2.41	27(23,38)	-0.22
California	174.13	0.46	45(44,48)	-11.50 <sup>c</sup>	New Jersey	186.22	0.94	38(34,40)	-5.36 <sup>c</sup>
Colorado	163.82	1.23	50(49,50)	-16.74 <sup>c</sup>	New Mexico	173.10	1.83	46(44,48)	-12.03 <sup>c</sup>
Connecticut	178.43	1.40	44(41,45)	-9.32 <sup>c</sup>	New York	183.50	0.63	42(39,43)	-6.74 <sup>c</sup>
Delaware	201.79	2.91	22(12,28)	2.55	North Carolina	210.65	0.97	14(12,16)	7.05 <sup>c</sup>
D.C.	204.98	4.15	20(10,29)	4.17	North Dakota	186.70	3.22	37(27,44)	-5.12 <sup>c</sup>
Florida	185.84	0.55	39(36,41)	-5.56 <sup>c</sup>	Ohio	215.95	0.86	11(10,13)	9.75 <sup>c</sup>
Georgia	209.16	1.06	15(13,20)	6.30 <sup>c</sup>	Oklahoma	225.32	1.56	08(08,10)	14.51 <sup>c</sup>
Hawaii	164.36	2.10	49(48,50)	-16.47 <sup>c</sup>	Oregon	193.09	1.38	31(26,36)	-1.87
Idaho	183.50	2.19	41(36,45)	-6.74 <sup>c</sup>	Pennsylvania	207.14	0.77	16(14,21)	5.27 <sup>c</sup>
Illinois	206.04	0.84	18(16,23)	4.71	Rhode Island	206.59	2.78	17(12,26)	4.99
Indiana	221.54	1.21	09(08,10)	12.59 <sup>c</sup>	South Carolina	218.56	1.39	10(08,11)	11.08 <sup>c</sup>
Iowa	204.30	1.58	21(16,25)	3.83	South Dakota	192.42	2.95	32(22,40)	-2.21
Kansas	198.18	1.68	24(21,32)	0.72	Tennessee	230.73	1.23	07(03,07)	17.26 <sup>c</sup>
Kentucky	245.77	1.54	02(01,02)	24.90 <sup>c</sup>	Texas	190.52	0.62	34(29,36)	-3.17
Louisiana	233.56	1.52	04(03,07)	18.70 <sup>c</sup>	Utah	148.88	1.72	51(51,51)	-24.34 <sup>c</sup>
Maine	211.77	2.34	13(10,20)	7.63 <sup>c</sup>	Vermont	197.81	3.43	26(15,35)	0.53
Maryland	193.93	1.22	30(25,34)	-1.44	Virginia	197.85	1.05	25(22,29)	0.55
Massachusetts	191.32	1.08	33(26,35)	-2.77	Washington	187.83	1.08	36(33,40)	-4.54
Michigan	205.39	0.91	19(15,23)	4.38	West Virginia	233.49	2.11	05(03,07)	18.66 <sup>c</sup>
Minnesota	184.82	1.19	40(36,42)	-6.07 <sup>c</sup>	Wisconsin	198.28	1.17	23(22,29)	0.77
Mississippi	249.77	1.93	01(01,02)	26.94 <sup>c</sup>	Wyoming	170.62	3.52	47(40,49)	-13.29 <sup>c</sup>
Missouri	213.93	1.19	12(11,15)	8.72 <sup>c</sup>					



<sup>a</sup> US Mortality Files, National Center for Health Statistics, Centers for Disease Control and Prevention. Rates are per 100,000 and are age-adjusted to the 2000 US Std Population (19 age groups - Census P25-1130).

<sup>b</sup> Difference between state rate and total U.S. rate is statistically significant ( $p \leq .0002$ ).

<sup>c</sup> Absolute percent difference between state rate and total U.S. rate is 5% or more.

<sup>d</sup> Rank of state level death rate and the 95% confidence intervals (low, high) for the rank.

SE Standard error of the rate.

PD Percent difference between state rate and total U.S. rate.

- Statistic not shown. Rate based on less than 16 cases for the time interval.

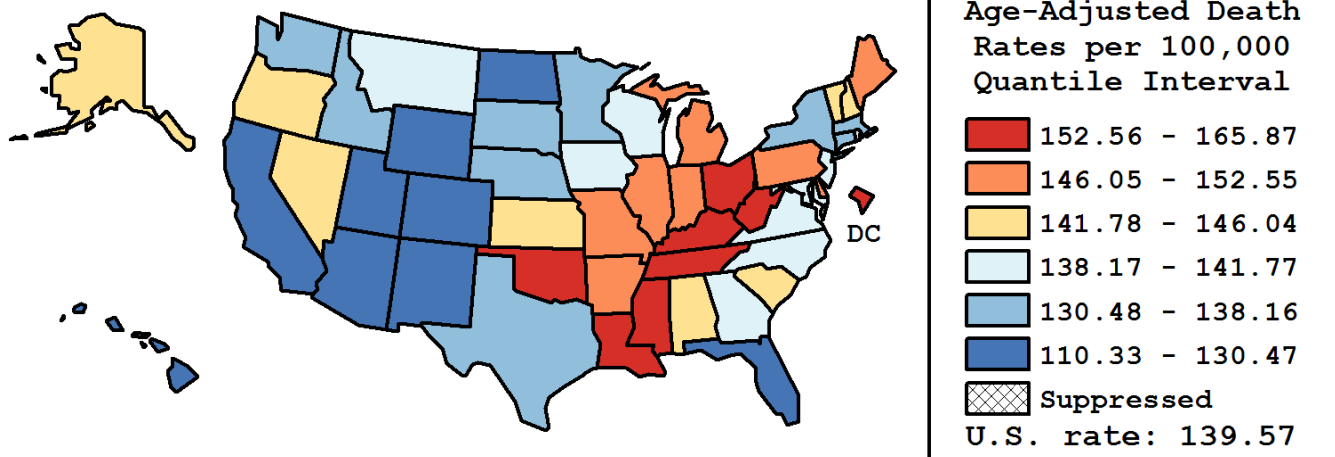
Table 2.20  
All Cancer Sites (Invasive)

Age-Adjusted Cancer Death<sup>a</sup> Rates by State, All Races, 2011-2015

Females

State	Rate	SE	Rank(CI) <sup>d</sup>	PD
TOTAL U.S.	139.57	0.12		
High Five States				
Kentucky	165.87	1.11	01(01,03)	18.85 <sup>c</sup>
West Virginia	163.19	1.60	02(01,04)	16.93 <sup>c</sup>
D.C.	159.17	3.07	03(01,13)	14.04 <sup>c</sup>
Oklahoma	156.50	1.17	04(03,10)	12.13 <sup>c</sup>
Mississippi	156.07	1.32	05(02,09)	11.83 <sup>c</sup>
Low Five States				
Arizona	124.93	0.79	47(46,49)	-10.49 <sup>c</sup>
New Mexico	123.56	1.41	48(46,49)	-11.47 <sup>c</sup>
Colorado	122.27	0.94	49(46,49)	-12.39 <sup>c</sup>
Hawaii	114.61	1.61	50(50,51)	-17.88 <sup>c</sup>
Utah	110.33	1.35	51(50,51)	-20.95 <sup>c</sup>

State	Rate	SE	Rank(CI) <sup>d</sup>	PD	State	Rate	SE	Rank(CI) <sup>d</sup>	PD
Alabama	145.70	0.97	18(13,22)	4.39	Montana	138.27	2.06	33(22,44)	-0.93
Alaska	146.04	3.32	17(05,38)	4.64	Nebraska	137.02	1.56	36(25,41)	-1.82
Arizona	124.93	0.79	47(46,49)	-10.49 <sup>c</sup>	Nevada	143.92	1.39	20(15,31)	3.12
Arkansas	152.55	1.28	09(05,15)	9.30 <sup>c</sup>	New Hampshire	142.07	1.83	24(16,37)	1.79
California	128.44	0.35	46(43,46)	-7.98 <sup>c</sup>	New Jersey	138.99	0.70	31(23,36)	-0.41
Colorado	122.27	0.94	49(46,49)	-12.39 <sup>c</sup>	New Mexico	123.56	1.41	48(46,49)	-11.47 <sup>c</sup>
Connecticut	130.73	1.05	42(38,45)	-6.33 <sup>c</sup>	New York	135.89	0.47	38(34,39)	-2.63
Delaware	149.22	2.21	14(05,24)	6.92 <sup>c</sup>	North Carolina	140.29	0.68	29(22,34)	0.52
D.C.	159.17	3.07	03(01,13)	14.04 <sup>c</sup>	North Dakota	128.71	2.45	45(39,49)	-7.78 <sup>c</sup>
Florida	130.47	0.43	43(40,45)	-6.52 <sup>c</sup>	Ohio	153.53	0.64	07(05,12)	10.00 <sup>c</sup>
Georgia	138.94	0.72	32(26,37)	-0.45	Oklahoma	156.50	1.17	04(03,10)	12.13 <sup>c</sup>
Hawaii	114.61	1.61	50(50,51)	-17.88 <sup>c</sup>	Oregon	143.90	1.08	21(16,27)	3.11
Idaho	132.48	1.72	40(37,46)	-5.08 <sup>c</sup>	Pennsylvania	147.13	0.58	16(13,19)	5.42 <sup>c</sup>
Illinois	148.46	0.62	15(11,18)	6.37 <sup>c</sup>	Rhode Island	140.37	2.00	28(15,37)	0.58
Indiana	152.09	0.88	11(06,14)	8.97 <sup>c</sup>	South Carolina	143.15	0.98	22(16,27)	2.57
Iowa	141.77	1.19	25(20,37)	1.58	South Dakota	136.58	2.30	37(21,44)	-2.14
Kansas	142.99	1.29	23(18,36)	2.46	Tennessee	152.72	0.87	08(06,14)	9.43 <sup>c</sup>
Kentucky	165.87	1.11	01(01,03)	18.85 <sup>c</sup>	Texas	131.18	0.45	41(39,45)	-6.01 <sup>c</sup>
Louisiana	154.58	1.07	06(03,10)	10.76 <sup>c</sup>	Utah	110.33	1.35	51(50,51)	-20.95 <sup>c</sup>
Maine	150.13	1.76	12(07,22)	7.57 <sup>c</sup>	Vermont	144.84	2.63	19(08,35)	3.78
Maryland	141.01	0.89	27(19,33)	1.03	Virginia	139.70	0.76	30(24,36)	0.10
Massachusetts	138.09	0.80	35(26,38)	-1.06	Washington	138.16	0.83	34(26,38)	-1.01
Michigan	149.48	0.69	13(09,16)	7.10 <sup>c</sup>	West Virginia	163.19	1.60	02(01,04)	16.93 <sup>c</sup>
Minnesota	134.33	0.91	39(36,42)	-3.75	Wisconsin	141.67	0.89	26(19,30)	1.51
Mississippi	156.07	1.32	05(02,09)	11.83 <sup>c</sup>	Wyoming	129.97	2.85	44(24,46)	-6.87 <sup>c</sup>
Missouri	152.42	0.89	10(05,13)	9.21 <sup>c</sup>					



<sup>a</sup> US Mortality Files, National Center for Health Statistics, Centers for Disease Control and Prevention. Rates are per 100,000 and are age-adjusted to the 2000 US Std Population (19 age groups - Census P25-1130).

<sup>b</sup> Difference between state rate and total U.S. rate is statistically significant ( $p \leq .0002$ ).

<sup>c</sup> Absolute percent difference between state rate and total U.S. rate is 5% or more.

<sup>d</sup> Rank of state level death rate and the 95% confidence intervals (low, high) for the rank.

SE Standard error of the rate.

PD Percent difference between state rate and total U.S. rate.

- Statistic not shown. Rate based on less than 16 cases for the time interval.

Table 2.21  
All Cancer Sites (Invasive)

Estimated United States Cancer Prevalence Counts<sup>a</sup> on January 1, 2015  
By Race/Ethnicity, Sex and Years Since Diagnosis

Years Since Diagnosis		0 to <5	5 to <10	10 to <15	15 to <20	20 to <25	25 to <30	0 to <23 <sup>e</sup>	0 to <40 <sup>e</sup>	>=40 <sup>g</sup>	Complete <sup>h</sup>
<u>Race</u>	<u>Sex</u>										
All Races <sup>b</sup>	Both Sexes	4,824,178	3,556,622	2,539,024	1,684,805	1,027,788	596,607	13,632,413	14,803,473	308,625	15,112,098
	Males	2,376,361	1,810,422	1,245,418	753,977	417,992	193,903	6,604,165	6,969,613	62,881	7,032,494
	Females	2,447,817	1,746,200	1,293,606	930,828	609,796	402,704	7,028,248	7,833,860	245,744	8,079,604
White <sup>b</sup>	Both Sexes	4,025,710	3,031,670	2,210,923	1,480,152	918,480	540,313	11,666,940	12,729,733	268,423	12,998,156
	Males	1,979,553	1,535,116	1,079,470	659,824	375,525	178,046	5,629,489	5,966,232	59,052	6,025,284
	Females	2,046,157	1,496,554	1,131,453	820,328	542,955	362,267	6,037,451	6,763,501	209,371	6,972,872
Black <sup>b</sup>	Both Sexes	514,632	342,402	220,174	134,094	70,121	34,036	1,281,422	1,348,176	19,480	1,367,656
	Males	262,708	187,253	118,721	66,073	28,714	9,327	663,469	680,131	1,468	681,599
	Females	251,924	155,149	101,453	68,021	41,407	24,709	617,953	668,045	18,012	686,057
Asian/ Pacific Islander <sup>c</sup>	Both Sexes	169,228	110,452	72,608	+	+	+	411,819	+	+	+
	Males	68,694	45,205	28,003	+	+	+	161,925	+	+	+
	Females	100,534	65,247	44,605	+	+	+	249,894	+	+	+
Hispanic <sup>d</sup>	Both Sexes	368,315	242,030	159,921	+	+	+	902,692	+	+	+
	Males	166,581	115,241	73,688	+	+	+	410,630	+	+	+
	Females	201,734	126,789	86,233	+	+	+	492,062	+	+	+

Estimated prevalence percent<sup>a</sup> on January 1, 2015, of the SEER<sup>c</sup> population diagnosed in the previous 23 years  
By Age at Prevalence, Race/Ethnicity and Sex

Age at Prevalence		Age Specific (Crude)									Age-Adjusted <sup>f</sup>	
		All Ages	0-9	10-19	20-29	30-39	40-49	50-59	60-69	70-79	80+	All Ages
<u>Race</u>	<u>Sex</u>											
All Races <sup>c</sup>	Both Sexes	3.7811%	0.0865%	0.1941%	0.3701%	0.8473%	2.0447%	4.6855%	9.9293%	17.3693%	20.4323%	3.4851%
	Males	3.6622%	0.0887%	0.2052%	0.3616%	0.6777%	1.3934%	3.7152%	10.1242%	21.1212%	28.0150%	3.7502%
	Females	3.8969%	0.0842%	0.1826%	0.3790%	1.0185%	2.6893%	5.6184%	9.7533%	14.2865%	15.8278%	3.3569%
White <sup>c</sup>	Both Sexes	4.1892%	0.0929%	0.2133%	0.4217%	0.9517%	2.2108%	4.9177%	10.3771%	18.3692%	21.5997%	3.6930%
	Males	4.0293%	0.0947%	0.2258%	0.4143%	0.7700%	1.5339%	3.8687%	10.3809%	21.9162%	29.0692%	3.9143%
	Females	4.3486%	0.0909%	0.2003%	0.4296%	1.1432%	2.9117%	5.9617%	10.3736%	15.3738%	16.9960%	3.6053%
Black <sup>c</sup>	Both Sexes	2.8380%	0.0663%	0.1367%	0.2350%	0.5867%	1.6488%	4.3786%	10.2966%	17.2001%	17.8801%	3.2624%
	Males	3.0539%	0.0692%	0.1382%	0.2256%	0.4453%	1.1497%	4.1103%	12.8086%	24.8125%	29.4374%	4.1671%
	Females	2.6415%	0.0634%	0.1352%	0.2442%	0.7119%	2.0842%	4.6132%	8.3256%	11.8842%	12.1149%	2.7161%
Asian/ Pacific Islander <sup>c</sup>	Both Sexes	2.3925%	0.0702%	0.1455%	0.2282%	0.5211%	1.4554%	3.3546%	6.4172%	10.5316%	13.4877%	2.2751%
	Males	1.9953%	0.0725%	0.1568%	0.2140%	0.3545%	0.7456%	2.0445%	5.4229%	11.7078%	17.9062%	2.1442%
	Females	2.7574%	0.0677%	0.1337%	0.2429%	0.6731%	2.0826%	4.4845%	7.2278%	9.6112%	10.7595%	2.4312%
Hispanic <sup>d</sup>	Both Sexes	1.6731%	0.0796%	0.1822%	0.3083%	0.6346%	1.4346%	3.2777%	6.9337%	12.2446%	14.5043%	2.4854%
	Males	1.5011%	0.0842%	0.1992%	0.3187%	0.5131%	0.9227%	2.3494%	6.7139%	15.3604%	21.1148%	2.6914%
	Females	1.8476%	0.0749%	0.1645%	0.2970%	0.7641%	1.9653%	4.1819%	7.1251%	9.9048%	10.5024%	2.4164%

<sup>a</sup> US 2015 cancer prevalence counts are based on 2015 cancer prevalence proportions from the SEER registries and 1/1/2015 US population estimates based on the average of 2014 and 2015 population estimates from the US Bureau of the Census. Prevalence was calculated using the first invasive tumor for each cancer site diagnosed during the previous 40/23 years.

<sup>b c d</sup> Statistics based on (b) SEER 9 Areas (c) SEER 13 Areas excluding the Alaska Native Registry

(d) NHIA for Hispanic for SEER 13 Areas excluding the Alaska Native Registry.

<sup>e</sup> Maximum limited-duration prevalence: 40 years for 1975-2015 SEER 9 data; 23 years for 1992-2015 SEER 13 data (excluding the Alaska Native Registry) used to calculate prevalence for Hispanics and Asian Pacific Islanders.

<sup>f</sup> Percentages are age-adjusted to the 2000 US Standard Population (19 age groups - Census P25-1130) by 5-year age groups.

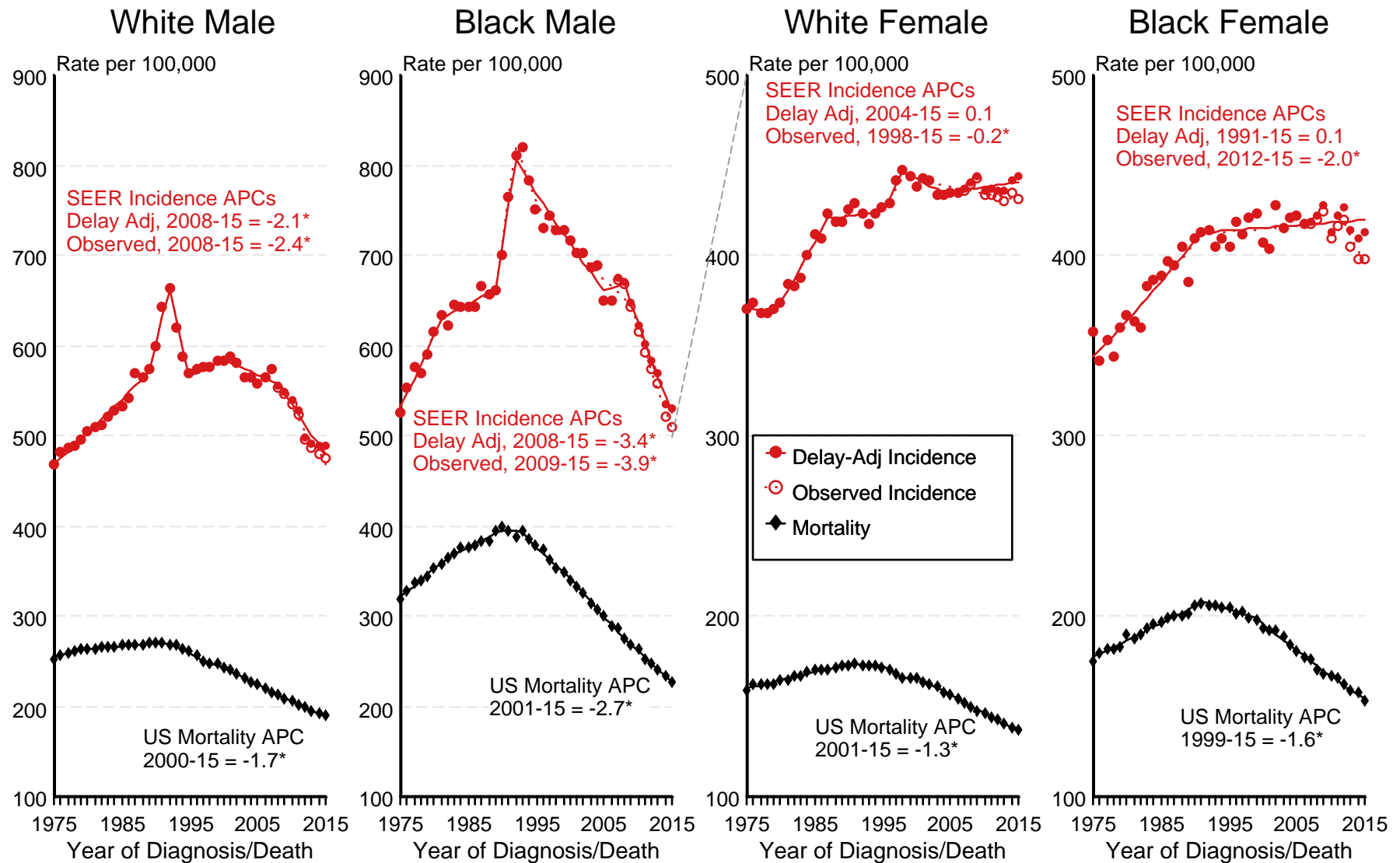
<sup>g h i</sup> (g) Cases diagnosed more than 40 years ago were estimated using the completeness index method (Capocaccia et. al. 1997, Merrill et. al. 2000). (h) Complete prevalence is obtained by summing 0 to <40 and >=40. (i) Age-specific completeness index was approximated using empirical data from historical Connecticut tumor registry.

- Statistic not shown. Statistic based on fewer than 5 cases estimated alive in SEER for the time interval.

+ Not available.

Figure 2.1

# SEER Observed Incidence, SEER Delay Adjusted Incidence and US Death Rates<sup>a</sup> All Cancer Sites, by Race and Sex



Source: SEER 9 areas and US Mortality Files (National Center for Health Statistics, CDC).

<sup>a</sup> Rates are age-adjusted to the 2000 US Std Population (19 age groups - Census P25-1103).

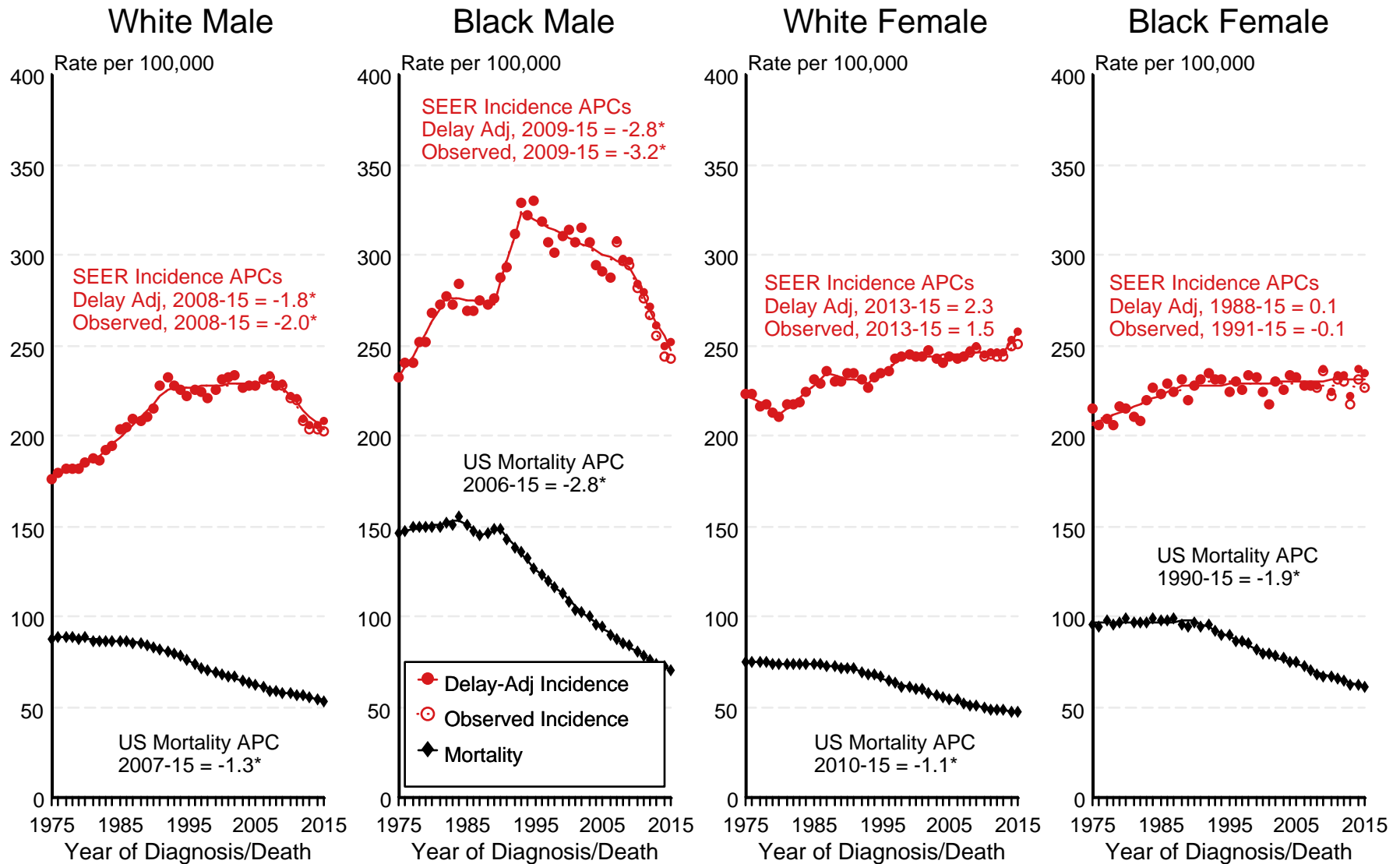
Regression lines and APCs are calculated using the Joinpoint Regression Program Version 4.6, February 2018, National Cancer Institute.

The APC is the Annual Percent Change for the regression line segments. The APC shown on the graph is for the most recent trend.

\* The APC is significantly different from zero ( $p < 0.05$ ).

Figure 2.2

# SEER Observed Incidence, SEER Delay Adjusted Incidence and US Death Rates<sup>a</sup> All Cancer Sites, Under 65 Years of Age, by Race and Sex



Source: SEER 9 areas and US Mortality Files (National Center for Health Statistics, CDC).

<sup>a</sup> Rates are age-adjusted to the 2000 US Std Population (19 age groups - Census P25-1103).

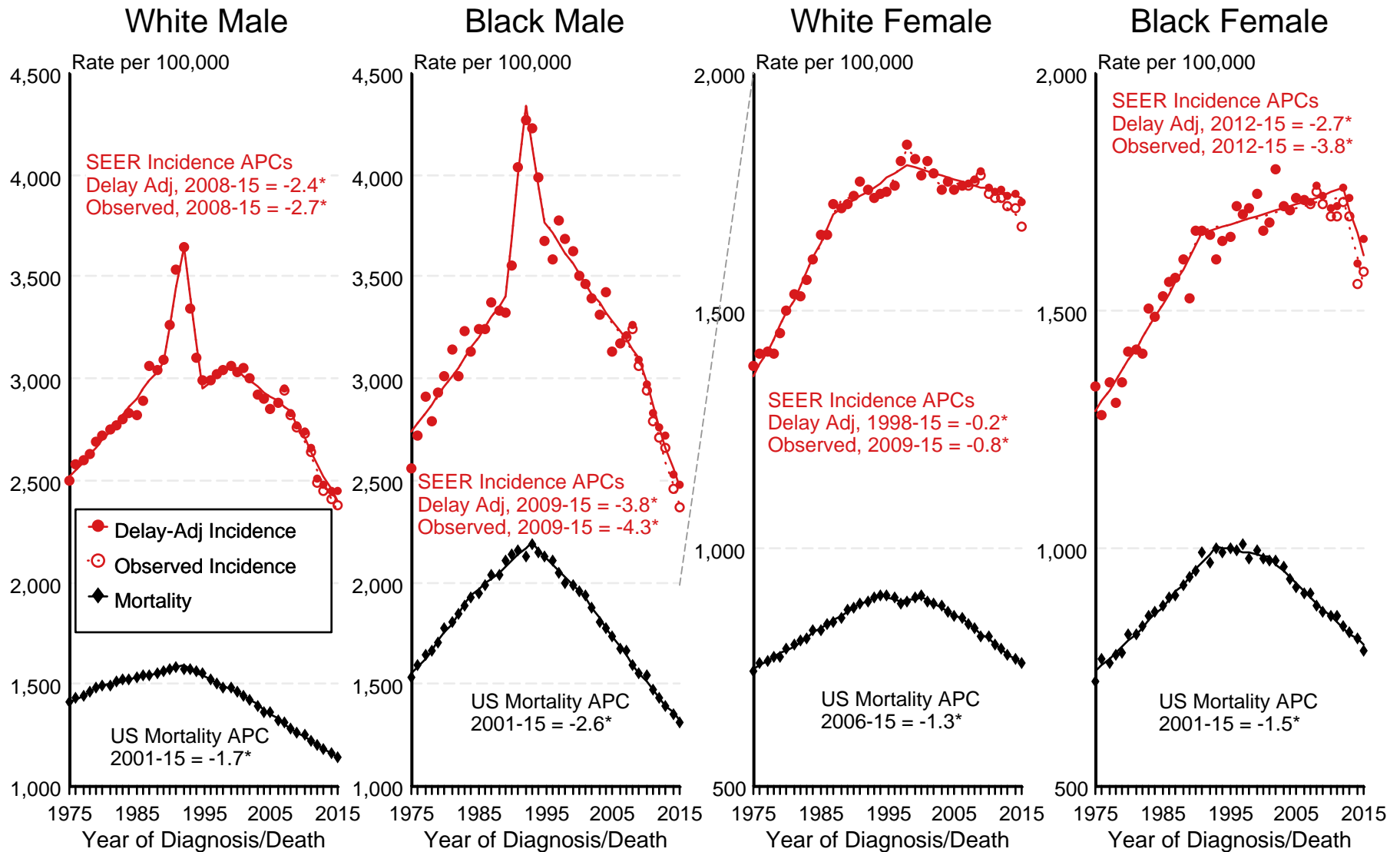
Regression lines and APCs are calculated using the Joinpoint Regression Program Version 4.6, February 2018, National Cancer Institute.

The APC is the Annual Percent Change for the regression line segments. The APC shown on the graph is for the most recent trend.

\* The APC is significantly different from zero ( $p < 0.05$ ).

Figure 2.3

# SEER Observed Incidence, SEER Delay Adjusted Incidence and US Death Rates<sup>a</sup> All Cancer Sites, Ages 65 and Over, by Race and Sex



Source: SEER 9 areas and US Mortality Files (National Center for Health Statistics, CDC).

<sup>a</sup> Rates are age-adjusted to the 2000 US Std Population (19 age groups - Census P25-1103).

Regression lines and APCs are calculated using the Joinpoint Regression Program Version 4.6, February 2018, National Cancer Institute.

The APC is the Annual Percent Change for the regression line segments. The APC shown on the graph is for the most recent trend.

\* The APC is significantly different from zero ( $p < 0.05$ ).

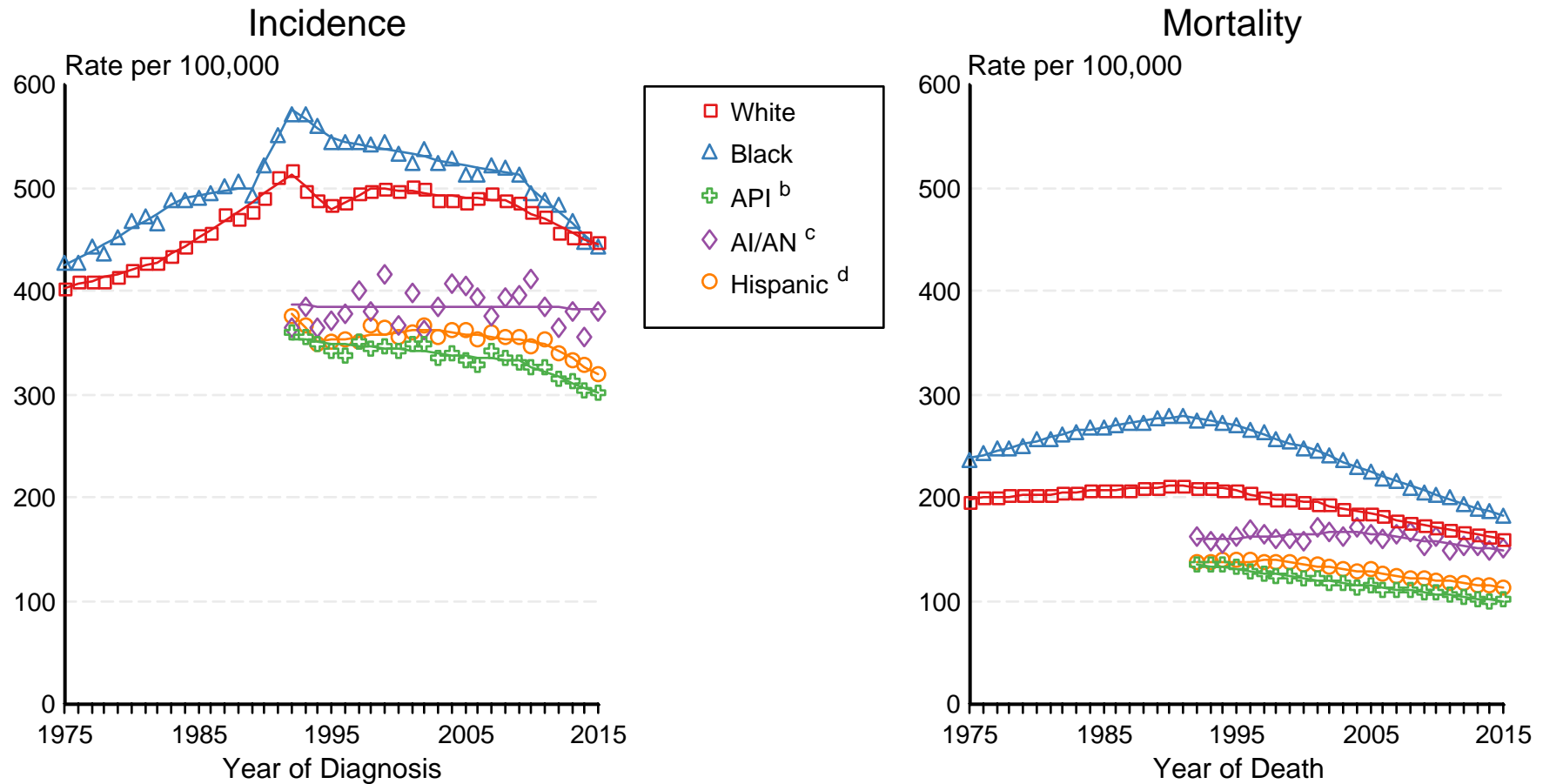


Figure 2.4

# SEER Incidence and US Death Rates<sup>a</sup> All Cancer Sites, Both Sexes

Joinpoint Analyses for Whites and Blacks from 1975-2015

and for Asian/Pacific Islanders, American Indians/Alaska Natives and Hispanics from 1992-2015



Source: Incidence data for whites and blacks are from the SEER 9 areas (San Francisco, Connecticut, Detroit, Hawaii, Iowa, New Mexico, Seattle, Utah, Atlanta). Incidence data for Asian/Pacific Islanders, American Indians/Alaska Natives and Hispanics are from the SEER 13 Areas (SEER 9 Areas, San Jose-Monterey, Los Angeles, Alaska Native Registry and Rural Georgia). Mortality data are from US Mortality Files, National Center for Health Statistics, CDC.

<sup>a</sup> Rates are age-adjusted to the 2000 US Std Population (19 age groups - Census P25-1103).

Regression lines are calculated using the Joinpoint Regression Program Version 4.6, February 2018, National Cancer Institute. Joinpoint analyses for Whites and Blacks during the 1975-2015 period allow a maximum of 5 joinpoints. Analyses for other ethnic groups during the period 1992-2015 allow a maximum of 4 joinpoints.

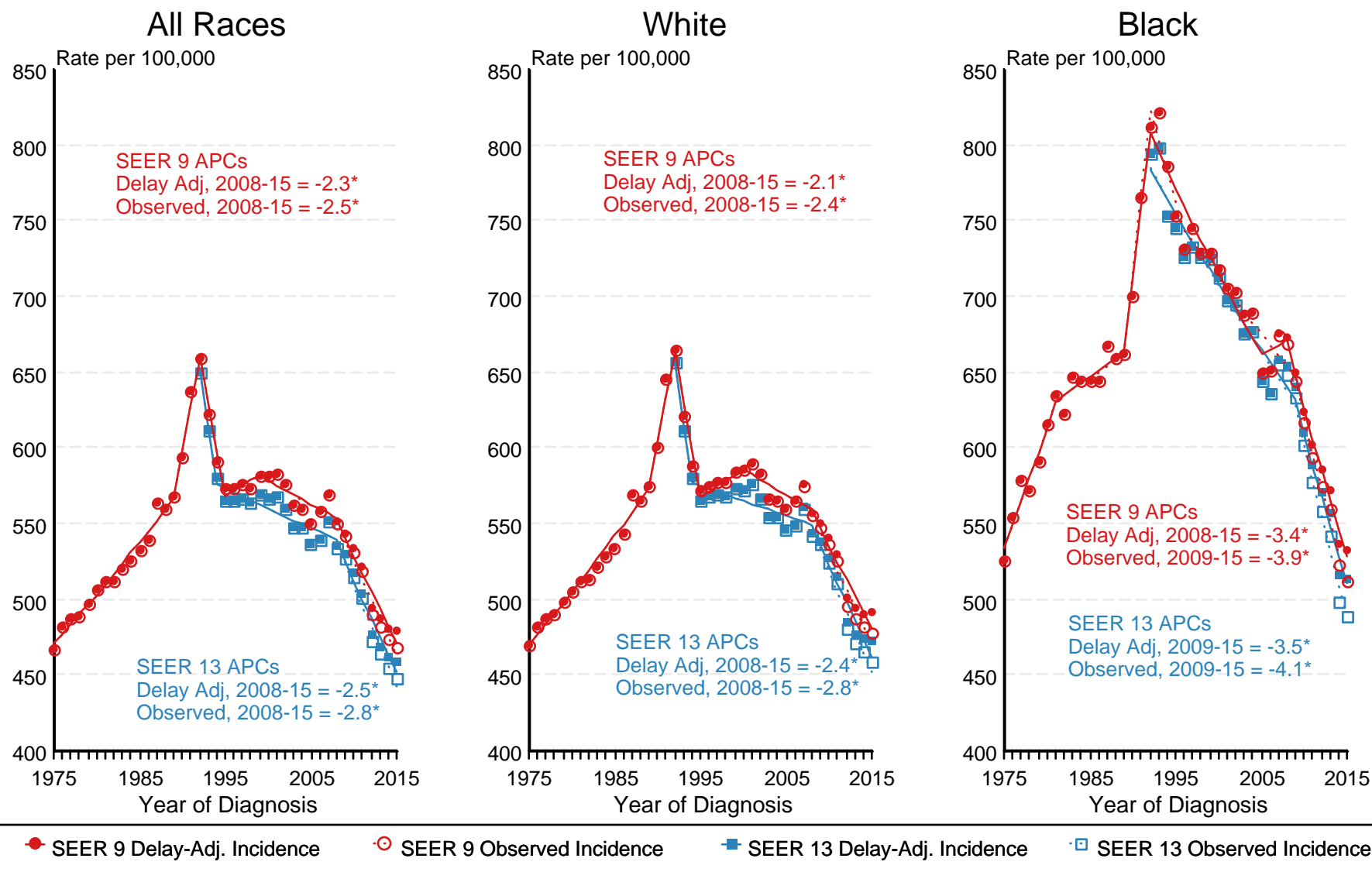
<sup>b</sup> API = Asian/Pacific Islander.

<sup>c</sup> AI/AN = American Indian/Alaska Native. Rates for American Indian/Alaska Native are based on the CHSDA(Contract Health Service Delivery Area) counties.

<sup>d</sup> Hispanic is not mutually exclusive from whites, blacks, Asian/Pacific Islanders, and American Indians/Alaska Natives. Incidence data for Hispanics are based on NHIA and exclude cases from the Alaska Native Registry. Mortality data for Hispanics exclude cases from New Hampshire and Oklahoma.

Figure 2.5

# SEER Observed Incidence and SEER Delay Adjusted Incidence Rates<sup>a</sup> SEER 9 Areas Compared to SEER 13 Areas All Cancer Sites, Males, by Race



Source: SEER 9 areas and SEER 13 areas.

<sup>a</sup> Rates are age-adjusted to the 2000 US Std Population (19 age groups - Census P25-1103).

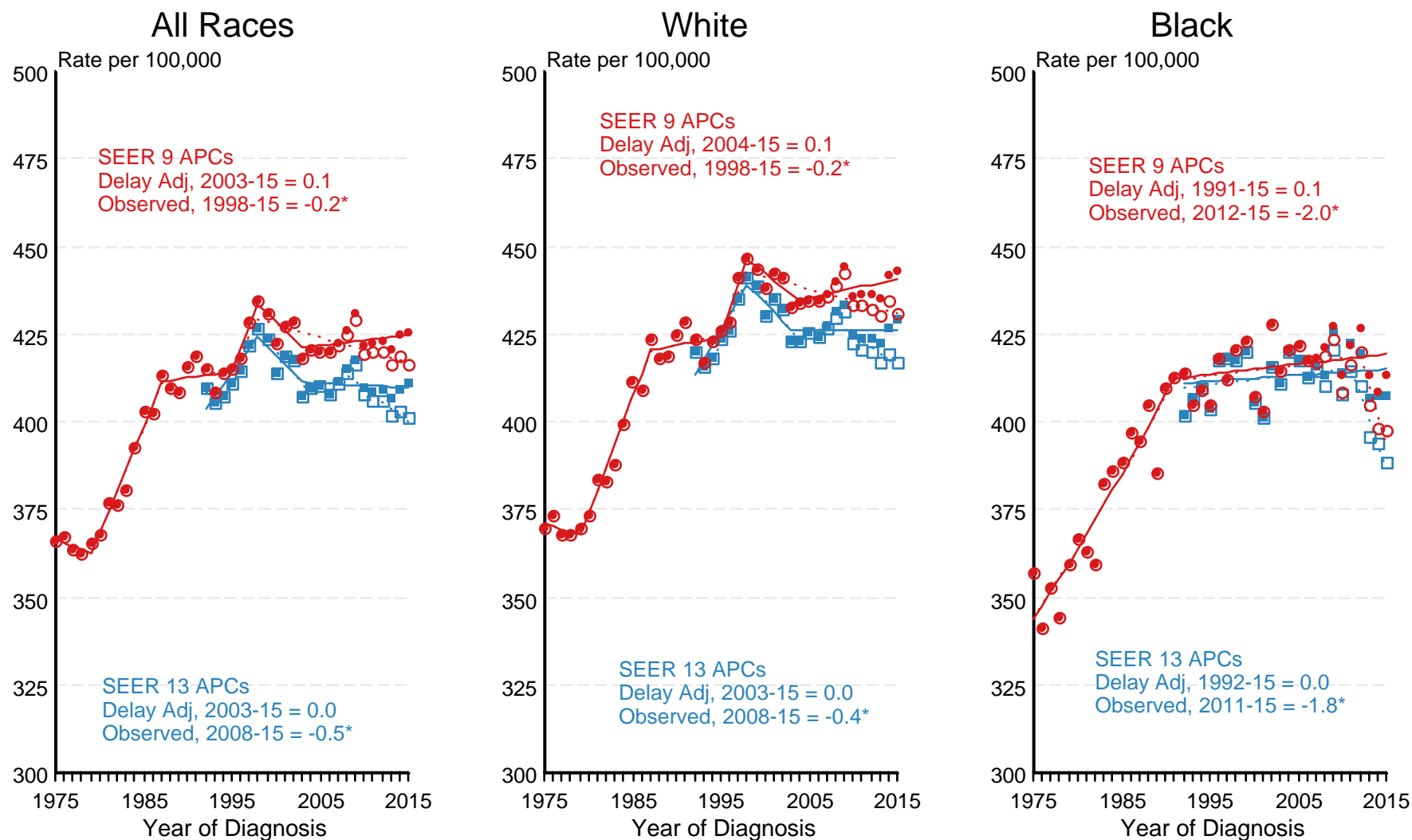
Regression lines and APCs are calculated using the Joinpoint Regression Program Version 4.6, February 2018, National Cancer Institute.

The APC is the Annual Percent Change for the regression line segments. The APC shown on the graph is for the most recent trend.

\* The APC is significantly different from zero ( $p < 0.05$ ).

Figure 2.6

# SEER Observed Incidence and SEER Delay Adjusted Incidence Rates<sup>a</sup> SEER 9 Areas Compared to SEER 13 Areas All Cancer Sites, Female, by Race



● SEER 9 Delay-Adj. Incidence    
 ○ SEER 9 Observed Incidence    
 ■ SEER 13 Delay-Adj. Incidence    
 □ SEER 13 Observed Incidence

Source: SEER 9 areas and SEER 13 areas.  
<sup>a</sup> Rates are age-adjusted to the 2000 US Std Population (19 age groups - Census P25-1103).  
 Regression lines and APCs are calculated using the Joinpoint Regression Program Version 4.6, February 2018, National Cancer Institute.  
 The APC is the Annual Percent Change for the regression line segments. The APC shown on the graph is for the most recent trend.  
 \* The APC is significantly different from zero ( $p < 0.05$ ).