

Table 23.1
Cancer of the Prostate (Invasive)

Trends in SEER Incidence^{ab} and U.S. Mortality^c Using the Joinpoint Regression Program,
1975-2015 With up to Five Joinpoints, 1992-2015 With up to Four Joinpoints,
All Ages by Race/Ethnicity

	JP Trend 1		JP Trend 2		JP Trend 3		JP Trend 4		JP Trend 5		JP Trend 6		AAPC ^d	
	Years	APC	Years	APC	Years	APC	Years	APC	Years	APC	Years	APC	2006-15	2011-15
<u>SEER 9 Delay-Adjusted Incidence^a, 1975-2015</u>														
All Races	1975-88	2.6*	1988-92	16.5*	1992-95	-11.5*	1995-00	2.2	2000-09	-1.6*	2009-15	-7.4*	-5.5*	-7.4*
White	1975-88	2.8*	1988-92	16.3*	1992-95	-12.5*	1995-00	2.6	2000-09	-1.8*	2009-15	-7.4*	-5.6*	-7.4*
Black	1975-89	2.1*	1989-92	19.0*	1992-09	-1.5*	2009-15	-6.7*					-5.0*	-6.7*
<u>SEER 13 Delay-Adjusted Incidence^b, 1992-2015</u>														
All Races	1992-95	-11.1*	1995-00	2.0	2000-09	-1.8*	2009-15	-7.5*					-5.6*	-7.5*
White	1992-95	-11.9*	1995-00	2.4	2000-09	-1.9*	2009-15	-7.6*					-5.7*	-7.6*
Black	1992-09	-1.6*	2009-15	-6.8*									-5.1*	-6.8*
<u>SEER 9 Observed Incidence^a, 1975-2015</u>														
All Races	1975-88	2.6*	1988-92	16.5*	1992-95	-11.5*	1995-00	2.2	2000-09	-1.7*	2009-15	-7.7*	-5.7*	-7.7*
White	1975-88	2.8*	1988-92	16.3*	1992-95	-12.5*	1995-00	2.6	2000-09	-1.8*	2009-15	-8.0*	-6.0*	-8.0*
Black	1975-89	2.1*	1989-92	19.2*	1992-09	-1.6*	2009-15	-7.5*					-5.5*	-7.5*
<u>SEER 13 Observed Incidence^b, 1992-2015</u>														
All Races	1992-95	-11.1*	1995-00	2.0	2000-09	-1.8*	2009-15	-7.9*					-5.9*	-7.9*
White	1992-95	-11.9*	1995-00	2.4	2000-09	-1.9*	2009-15	-8.2*					-6.2*	-8.2*
White NH ^{ef}	1992-94	-15.4*	1994-07	-0.2	2007-15	-6.9*							-6.2*	-6.9*
Black	1992-09	-1.7*	2009-15	-7.8*									-5.8*	-7.8*
Black NH ^{ef}	1992-09	-1.6*	2009-15	-7.7*									-5.7*	-7.7*
API ^e	1992-96	-5.4	1996-07	-0.1	2007-15	-8.0*							-7.2*	-8.0*
AI/AN ^{eg}	1992-09	-1.5*	2009-15	-9.2*									-6.7*	-9.2*
Hispanic ^f	1992-95	-4.9	1995-02	0.9	2002-10	-2.8*	2010-15	-9.6*					-6.6*	-9.6*
<u>U.S. Cancer Mortality^c, 1975-2015</u>														
All Races	1975-87	0.9*	1987-91	3.0*	1991-94	-0.5	1994-98	-4.2*	1998-13	-3.5*	2013-15	-0.8	-2.9*	-2.2*
White	1975-87	0.8*	1987-91	3.1*	1991-94	-0.7	1994-99	-4.3*	1999-13	-3.3*	2013-15	-0.4	-2.7*	-1.9*
Black	1975-88	1.9*	1988-93	3.2*	1993-01	-2.5*	2001-15	-4.2*					-4.2*	-4.2*
<u>U.S. Cancer Mortality^c, 1992-2015</u>														
All Races	1992-94	-0.6	1994-98	-4.2*	1998-13	-3.5*	2013-15	-0.8					-2.9*	-2.2*
White	1992-94	-0.7	1994-99	-4.3*	1999-13	-3.3*	2013-15	-0.4					-2.7*	-1.9*
White NH ^{ef}	1992-94	-0.2	1994-98	-4.5*	1998-12	-3.4*	2012-15	-1.4					-2.7*	-1.9*
Black	1992-01	-2.2*	2001-15	-4.2*									-4.2*	-4.2*
Black NH ^{ef}	1992-01	-2.1*	2001-15	-4.2*									-4.2*	-4.2*
API ^e	1992-15	-3.2*											-3.2*	-3.2*
AI/AN ^{eg}	1992-15	-1.5*											-1.5*	-1.5*
Hispanic ^f	1992-94	4.6	1994-15	-2.8*									-2.8*	-2.8*

Joinpoint Regression Program Version 4.6, February 2018, National Cancer Institute. (<https://surveillance.cancer.gov/joinpoint/>).

The APC is the Annual Percent Change based on rates age-adjusted to the 2000 US Std Population (19 age groups - Census P25-1130). Trends are from the SEER 9 areas (San Francisco, Connecticut, Detroit, Hawaii, Iowa, New Mexico, Seattle, Utah, and Atlanta).

Trends are from the SEER 13 areas (SEER 9 Areas, Los Angeles, San Jose-Monterey, Rural Georgia, and the Alaska Native Registry).

Trends are from US Mortality Files, National Center for Health Statistics, Centers for Disease Control and Prevention.

The AAPC is the Average Annual Percent Change and is based on the APCs calculated by Joinpoint.

API - Asian/Pacific Islander, AI/AN - American Indian/Alaska Native, NH - Non-Hispanic

Hispanic and Non-Hispanic are not mutually exclusive from whites, blacks, Asian/Pacific Islanders, and American Indians/Alaska Natives. Incidence data for Hispanics and Non-Hispanics are based on NHIA and exclude cases from the Alaska Native Registry.

The Hispanic and Non-Hispanic mortality trends exclude deaths from New Hampshire and Oklahoma.

Data for American Indian/Alaska Native are based on the CHSDA (Contract Health Service Delivery Area) counties.

* The APC/AAPC is significantly different from zero ($p < .05$).

- Joinpoint regression line analysis could not be performed on data series.

Table 23.2
Cancer of the Prostate (Invasive)

Trends in SEER Incidence^{ab} and U.S. Mortality^c Using the Joinpoint Regression Program,
1975-2015 With up to Five Joinpoints, 1992-2015 With up to Four Joinpoints,
Ages <65 by Race/Ethnicity

	JP Trend 1		JP Trend 2		JP Trend 3		JP Trend 4		JP Trend 5		JP Trend 6		AAPC ^d	
	Years	APC	Years	APC	Years	APC	Years	APC	Years	APC	Years	APC	2006-15	2011-15
<u>SEER 9 Delay-Adjusted Incidence^a, 1975-2015</u>														
All Races	1975-88	3.1*	1988-92	23.4*	1992-01	3.3*	2001-09	0.0	2009-15	-7.4*			-5.0*	-7.4*
White	1975-88	3.5*	1988-92	23.0*	1992-01	3.1*	2001-09	0.0	2009-15	-7.8*			-5.3*	-7.8*
Black	1975-89	2.0*	1989-93	26.2*	1993-00	2.9*	2000-09	-0.1	2009-15	-5.4*			-3.7*	-5.4*
<u>SEER 13 Delay-Adjusted Incidence^b, 1992-2015</u>														
All Races	1992-01	3.3*	2001-09	-0.2	2009-15	-7.4*							-5.1*	-7.4*
White	1992-01	3.2*	2001-09	-0.3	2009-15	-8.0*							-5.5*	-8.0*
Black	1992-00	3.8*	2000-10	-0.6	2010-15	-6.7*							-4.0*	-6.7*
<u>SEER 9 Observed Incidence^a, 1975-2015</u>														
All Races	1975-88	3.1*	1988-92	23.4*	1992-01	3.3*	2001-09	0.0	2009-15	-7.6*			-5.2*	-7.6*
White	1975-88	3.5*	1988-92	23.0*	1992-01	3.1*	2001-09	-0.1	2009-15	-8.3*			-5.6*	-8.3*
Black	1975-89	2.0*	1989-93	26.2*	1993-00	2.9*	2000-09	-0.2	2009-15	-6.1*			-4.2*	-6.1*
<u>SEER 13 Observed Incidence^b, 1992-2015</u>														
All Races	1992-01	3.3*	2001-09	-0.2	2009-15	-7.8*							-5.3*	-7.8*
White	1992-01	3.2*	2001-09	-0.3	2009-15	-8.5*							-5.8*	-8.5*
White NH ^{ef}	1992-01	3.2*	2001-09	-0.2	2009-15	-8.3*							-5.7*	-8.3*
Black	1992-00	3.9*	2000-10	-0.8	2010-15	-7.6*							-4.6*	-7.6*
Black NH ^{ef}	1992-00	3.9*	2000-10	-0.7	2010-15	-7.5*							-4.5*	-7.5*
API ^e	1992-01	6.1*	2001-09	0.4	2009-15	-7.6*							-5.0*	-7.6*
AI/AN ^{eg}	1992-06	-0.2	2006-15	-7.6*									-7.6*	-7.6*
Hispanic ^f	1992-02	4.6*	2002-10	-1.5*	2010-15	-8.0*							-5.2*	-8.0*
<u>U.S. Cancer Mortality^c, 1975-2015</u>														
All Races	1975-87	0.5*	1987-90	3.0	1990-96	-3.1*	1996-00	-6.0*	2000-15	-1.2*			-1.2*	-1.2*
White	1975-87	0.7*	1987-90	3.8	1990-01	-4.5*	2001-15	-1.1*					-1.1*	-1.1*
Black	1975-92	0.6*	1992-06	-3.1*	2006-15	-2.2*							-2.2*	-2.2*
<u>U.S. Cancer Mortality^c, 1992-2015</u>														
All Races	1992-01	-4.5*	2001-15	-1.2*									-1.2*	-1.2*
White	1992-01	-4.8*	2001-15	-1.0*									-1.0*	-1.0*
White NH ^{ef}	1992-01	-4.7*	2001-15	-1.1*									-1.1*	-1.1*
Black	1992-04	-3.4*	2004-15	-2.2*									-2.2*	-2.2*
Black NH ^{ef}	1992-04	-3.4*	2004-15	-2.1*									-2.1*	-2.1*
API ^e	1992-15	-0.3											-0.3	-0.3
AI/AN ^{eg}	1992-99	-10.8*	1999-15	0.7									0.7	0.7
Hispanic ^f	1992-15	-1.7*											-1.7*	-1.7*

Joinpoint Regression Program Version 4.6, February 2018, National Cancer Institute. (<https://surveillance.cancer.gov/joinpoint/>).

The APC is the Annual Percent Change based on rates age-adjusted to the 2000 US Std Population (19 age groups - Census P25-1130).

Trends are from the SEER 9 areas (San Francisco, Connecticut, Detroit, Hawaii, Iowa, New Mexico, Seattle, Utah, and Atlanta).

Trends are from the SEER 13 areas (SEER 9 Areas, Los Angeles, San Jose-Monterey, Rural Georgia, and the Alaska Native Registry).

Trends are from US Mortality Files, National Center for Health Statistics, Centers for Disease Control and Prevention.

The AAPC is the Average Annual Percent Change and is based on the APCs calculated by Joinpoint.

API - Asian/Pacific Islander, AI/AN - American Indian/Alaska Native, NH - Non-Hispanic

Hispanic and Non-Hispanic are not mutually exclusive from whites, blacks, Asian/Pacific Islanders, and American Indians/Alaska

Natives. Incidence data for Hispanics and Non-Hispanics are based on NHIA and exclude cases from the Alaska Native Registry.

The Hispanic and Non-Hispanic mortality trends exclude deaths from New Hampshire and Oklahoma.

Data for American Indian/Alaska Native are based on the CHSDA (Contract Health Service Delivery Area) counties.

* The APC/AAPC is significantly different from zero ($p < .05$).

- Joinpoint regression line analysis could not be performed on data series.

a
b
c
d
e
f
g
*
-

Table 23.3
Cancer of the Prostate (Invasive)

Trends in SEER Incidence^{ab} and U.S. Mortality^c Using the Joinpoint Regression Program,
1975-2015 With up to Five Joinpoints, 1992-2015 With up to Four Joinpoints,
Ages 65+ by Race/Ethnicity

	JP Trend 1		JP Trend 2		JP Trend 3		JP Trend 4		JP Trend 5		JP Trend 6		AAPC ^d	
	Years	APC	Years	APC	Years	APC	Years	APC	Years	APC	Years	APC	2006-15	2011-15
<u>SEER 9 Delay-Adjusted Incidence^a, 1975-2015</u>														
All Races	1975-88	2.5*	1988-92	14.8*	1992-95	-13.2*	1995-07	-0.9*	2007-15	-6.7*			-6.0*	-6.7*
White	1975-88	2.7*	1988-92	14.9*	1992-95	-15.7*	1995-00	1.7	2000-09	-2.6*	2009-15	-7.2*	-5.7*	-7.2*
Black	1975-89	2.0*	1989-92	20.3*	1992-95	-9.0*	1995-09	-2.2*	2009-15	-7.9*			-6.0*	-7.9*
<u>SEER 13 Delay-Adjusted Incidence^b, 1992-2015</u>														
All Races	1992-95	-14.1*	1995-00	0.9	2000-09	-2.5*	2009-15	-7.6*					-5.9*	-7.6*
White	1992-95	-15.0*	1995-00	1.5	2000-10	-2.7*	2010-13	-11.2	2013-15	-0.6			-5.2*	-6.1
Black	1992-95	-8.2*	1995-09	-2.4*	2009-15	-7.7*							-5.9*	-7.7*
<u>SEER 9 Observed Incidence^a, 1975-2015</u>														
All Races	1975-88	2.5*	1988-92	14.8*	1992-95	-13.2*	1995-07	-0.9*	2007-15	-7.0*			-6.3*	-7.0*
White	1975-88	2.7*	1988-92	14.9*	1992-95	-15.7*	1995-00	1.7	2000-09	-2.7*	2009-15	-7.8*	-6.1*	-7.8*
Black	1975-89	2.0*	1989-92	20.3*	1992-95	-8.9*	1995-09	-2.2*	2009-15	-8.7*			-6.6*	-8.7*
<u>SEER 13 Observed Incidence^b, 1992-2015</u>														
All Races	1992-95	-14.1*	1995-00	0.9	2000-09	-2.5*	2009-15	-8.0*					-6.2*	-8.0*
White	1992-94	-18.9*	1994-07	-1.2*	2007-15	-7.2*							-6.5*	-7.2*
White NH ^{ef}	1992-94	-19.5*	1994-07	-1.1*	2007-15	-7.0*							-6.3*	-7.0*
Black	1992-95	-8.0*	1995-09	-2.5*	2009-15	-8.7*							-6.7*	-8.7*
Black NH ^{ef}	1992-95	-8.1*	1995-09	-2.5*	2009-15	-8.7*							-6.6*	-8.7*
API ^e	1992-96	-6.9*	1996-07	-0.9	2007-15	-8.6*							-7.8*	-8.6*
AI/AN ^{eg}	1992-10	-1.8*	2010-15	-10.2*									-6.6*	-10.2*
Hispanic ^f	1992-96	-5.7*	1996-00	1.7	2000-10	-3.0*	2010-15	-10.4*					-7.2*	-10.4*
<u>U.S. Cancer Mortality^c, 1975-2015</u>														
All Races	1975-87	0.9*	1987-90	3.3*	1990-93	1.3	1993-13	-3.6*	2013-15	-0.9			-3.0*	-2.3*
White	1975-87	0.8*	1987-91	3.2*	1991-94	-0.5	1994-98	-4.4*	1998-13	-3.5*	2013-15	-0.4	-2.8*	-2.0*
Black	1975-94	2.3*	1994-02	-2.8*	2002-15	-4.4*							-4.4*	-4.4*
<u>U.S. Cancer Mortality^c, 1992-2015</u>														
All Races	1992-94	-1.2	1994-13	-3.7*	2013-15	-0.8							-3.0*	-2.2*
White	1992-94	-0.6	1994-98	-4.3*	1998-13	-3.5*	2013-15	-0.4					-2.8*	-2.0*
White NH ^{ef}	1992-94	-0.2	1994-98	-4.3*	1998-12	-3.5*	2012-15	-1.5					-2.9*	-2.0*
Black	1992-01	-2.1*	2001-15	-4.4*									-4.4*	-4.4*
Black NH ^{ef}	1992-01	-2.0*	2001-15	-4.3*									-4.3*	-4.3*
API ^e	1992-15	-3.3*											-3.3*	-3.3*
AI/AN ^{eg}	1992-15	-1.5*											-1.5*	-1.5*
Hispanic ^f	1992-95	2.2	1995-15	-2.9*									-2.9*	-2.9*

Joinpoint Regression Program Version 4.6, February 2018, National Cancer Institute. (<https://surveillance.cancer.gov/joinpoint/>).

The APC is the Annual Percent Change based on rates age-adjusted to the 2000 US Std Population (19 age groups - Census P25-1130).

Trends are from the SEER 9 areas (San Francisco, Connecticut, Detroit, Hawaii, Iowa, New Mexico, Seattle, Utah, and Atlanta).

Trends are from the SEER 13 areas (SEER 9 Areas, Los Angeles, San Jose-Monterey, Rural Georgia, and the Alaska Native Registry).

Trends are from US Mortality Files, National Center for Health Statistics, Centers for Disease Control and Prevention.

The AAPC is the Average Annual Percent Change and is based on the APCs calculated by Joinpoint.

API - Asian/Pacific Islander, AI/AN - American Indian/Alaska Native, NH - Non-Hispanic

Hispanic and Non-Hispanic are not mutually exclusive from whites, blacks, Asian/Pacific Islanders, and American Indians/Alaska

Natives. Incidence data for Hispanics and Non-Hispanics are based on NHIA and exclude cases from the Alaska Native Registry.

The Hispanic and Non-Hispanic mortality trends exclude deaths from New Hampshire and Oklahoma.

Data for American Indian/Alaska Native are based on the CHSDA (Contract Health Service Delivery Area) counties.

* The APC/AAPC is significantly different from zero ($p < .05$).

- Joinpoint regression line analysis could not be performed on data series.

Table 23.4
Cancer of the Prostate (Invasive)

Delay-adjusted SEER Incidence^a Rates by Year, Race and Age

Year of Diagnosis:	All Races, Males			White Males			Black Males		
	All	<65	65+	All	<65	65+	All	<65	65+
1975-1979	99.13	14.71	682.70	97.69	14.16	675.05	150.69	27.73	1,000.70
1980	106.05	15.52	731.77	105.00	14.69	729.23	161.14	33.79	1,041.42
1981	108.88	16.84	745.11	107.87	15.96	743.20	162.01	34.72	1,041.86
1982	108.25	16.36	743.41	107.33	15.81	739.99	167.75	31.46	1,109.83
1983	111.63	17.17	764.62	110.84	16.62	762.09	171.07	34.02	1,118.41
1984	111.69	17.26	764.40	110.10	16.20	759.14	178.89	37.22	1,158.14
1985	115.52	17.95	790.00	114.66	17.70	784.82	170.41	31.59	1,129.99
1986	119.10	18.55	814.14	119.05	18.30	815.47	168.59	34.08	1,098.34
1987	133.78	21.53	909.65	134.59	21.09	919.13	189.42	36.06	1,249.49
1988	137.63	22.18	935.70	138.73	22.26	943.85	190.20	34.88	1,263.80
1989	145.41	24.21	983.22	146.21	24.11	990.23	191.83	37.41	1,259.25
1990	171.12	28.90	1,154.17	172.89	28.95	1,167.84	222.65	44.96	1,450.91
1991	214.87	38.94	1,430.98	216.58	39.43	1,441.08	289.60	57.48	1,894.07
1992	237.53	49.51	1,537.22	238.66	49.52	1,546.13	330.96	78.77	2,074.25
1993	209.63	50.49	1,309.66	204.74	48.97	1,281.53	347.54	95.45	2,090.03
1994	180.40	48.68	1,090.92	174.46	46.87	1,056.40	315.68	96.20	1,832.83
1995	169.53	50.18	994.47	164.78	48.17	970.82	286.05	100.73	1,567.04
1996	169.64	53.60	971.79	165.62	52.13	950.06	286.05	101.23	1,563.62
1997	173.77	55.35	992.36	170.40	53.98	975.11	288.35	98.88	1,598.03
1998	171.20	55.05	974.09	167.78	53.12	960.34	292.05	104.98	1,585.14
1999	183.69	60.88	1,032.62	179.58	58.85	1,014.09	296.24	114.12	1,555.08
2000	183.33	61.89	1,022.81	179.83	59.82	1,009.37	295.83	116.69	1,534.14
2001	185.33	64.67	1,019.40	183.27	62.70	1,016.73	279.51	115.91	1,410.38
2002	182.64	65.66	991.25	180.13	64.08	982.33	292.64	118.51	1,496.28
2003	170.09	62.11	916.55	166.80	59.84	906.14	265.09	117.36	1,286.27
2004	166.23	62.10	886.08	162.87	60.57	870.00	262.17	107.66	1,330.18
2005	156.98	58.10	840.52	152.43	55.53	822.24	255.90	107.94	1,278.63
2006	172.48	64.86	916.41	168.83	62.66	902.73	258.75	110.68	1,282.22
2007	175.82	66.95	928.33	171.38	64.13	912.74	271.10	121.10	1,307.96
2008	158.84	62.87	822.20	154.56	60.31	806.07	258.15	112.96	1,261.74
2009	156.24	62.77	802.31	152.46	60.56	787.67	250.27	112.51	1,202.45
2010	149.09	59.41	768.94	145.57	56.98	757.96	237.26	108.22	1,129.25
2011	143.01	57.81	731.92	139.07	55.35	717.71	227.21	107.03	1,057.90
2012	117.08	47.06	601.03	112.12	43.84	584.09	196.64	94.11	905.35
2013	112.11	44.95	576.29	108.17	42.46	562.38	190.50	88.79	893.59
2014	103.00	41.84	525.80	99.88	39.49	517.35	165.92	79.62	762.42
2015	108.18	42.67	560.98	105.57	39.90	559.56	173.10	86.90	769.01

Reference: [Cancer Incidence Rates Adjusted for Reporting Delay](#).

Individual rates for diagnosis years 1975-1979 available in web browser version of [Cancer Statistics Review](#).

SEER 9 areas (San Francisco, Connecticut, Detroit, Hawaii, Iowa, New Mexico, Seattle, Utah, and Atlanta).

Rates are per 100,000 and are age-adjusted to the 2000 US Std Population (19 age groups - Census P25-1130).

Delay-adjusted rate is not shown for observed rates based on less than 16 cases for the time interval.

^a

-

Table 23.5
Cancer of the Prostate (Invasive)

Age-adjusted SEER Incidence^a Rates by Year, Race and Age

	All Races, Males			White Males			Black Males		
	All	<65	65+	All	<65	65+	All	<65	65+
Year of Diagnosis:									
1975-2015	146.72	43.88	857.56	143.60	41.66	848.25	230.78	83.18	1,251.02
1975-1979	99.13	14.71	682.70	97.69	14.16	675.05	150.69	27.73	1,000.70
1980	106.05	15.52	731.77	105.00	14.69	729.23	161.14	33.79	1,041.42
1981	108.88	16.84	745.11	107.87	15.96	743.20	162.01	34.72	1,041.86
1982	108.25	16.36	743.41	107.33	15.81	739.99	167.75	31.46	1,109.83
1983	111.63	17.17	764.62	110.84	16.62	762.09	171.07	34.02	1,118.41
1984	111.69	17.26	764.40	110.10	16.20	759.14	178.89	37.22	1,158.14
1985	115.52	17.95	790.00	114.66	17.70	784.82	170.41	31.59	1,129.99
1986	119.10	18.55	814.14	119.05	18.30	815.47	168.59	34.08	1,098.34
1987	133.78	21.53	909.65	134.59	21.09	919.13	189.42	36.06	1,249.49
1988	137.63	22.18	935.70	138.73	22.26	943.85	190.20	34.88	1,263.80
1989	145.41	24.21	983.22	146.21	24.11	990.23	191.83	37.41	1,259.25
1990	171.12	28.90	1,154.17	172.89	28.95	1,167.84	222.65	44.96	1,450.91
1991	214.87	38.94	1,430.98	216.58	39.43	1,441.08	289.60	57.48	1,894.07
1992	237.53	49.51	1,537.22	238.66	49.52	1,546.13	330.96	78.77	2,074.25
1993	209.63	50.49	1,309.66	204.74	48.97	1,281.53	347.54	95.45	2,090.03
1994	180.40	48.68	1,090.92	174.46	46.87	1,056.40	315.68	96.20	1,832.83
1995	169.53	50.18	994.47	164.78	48.17	970.82	286.05	100.73	1,567.04
1996	169.64	53.60	971.79	165.62	52.13	950.06	286.05	101.23	1,563.62
1997	173.77	55.35	992.36	170.40	53.98	975.11	288.35	98.88	1,598.03
1998	171.20	55.05	974.09	167.78	53.12	960.34	292.05	104.98	1,585.14
1999	183.69	60.88	1,032.62	179.58	58.85	1,014.09	296.24	114.12	1,555.08
2000	183.33	61.89	1,022.81	179.83	59.82	1,009.37	295.83	116.69	1,534.14
2001	185.33	64.67	1,019.40	183.27	62.70	1,016.73	279.51	115.91	1,410.38
2002	182.64	65.66	991.25	180.13	64.08	982.33	292.64	118.51	1,496.28
2003	170.09	62.11	916.55	166.80	59.84	906.14	265.09	117.36	1,286.27
2004	166.23	62.10	886.08	162.87	60.57	870.00	262.17	107.66	1,330.18
2005	156.98	58.10	840.52	152.43	55.53	822.24	255.90	107.94	1,278.63
2006	172.48	64.86	916.41	168.83	62.66	902.73	258.75	110.68	1,282.22
2007	175.55	66.88	926.74	170.97	64.00	910.35	269.79	120.55	1,301.38
2008	158.36	62.74	819.37	153.81	60.06	801.85	255.64	111.91	1,249.14
2009	155.54	62.57	798.16	151.35	60.19	781.47	246.69	111.01	1,184.56
2010	148.21	59.16	763.80	144.17	56.50	750.14	232.71	106.25	1,106.82
2011	141.99	57.52	725.87	137.39	54.78	708.46	221.83	104.63	1,031.90
2012	116.08	46.78	595.07	110.52	43.30	575.20	190.99	91.59	878.06
2013	110.72	44.55	568.08	106.02	41.72	550.45	183.81	85.90	860.60
2014	101.21	41.30	515.38	97.10	38.52	502.03	159.09	76.47	730.24
2015	105.00	41.67	542.79	100.80	38.29	532.90	162.69	81.94	720.89

^a Individual rates for diagnosis years 1975-1979 available in web browser version of [Cancer Statistics Review](#).
SEER 9 areas (San Francisco, Connecticut, Detroit, Hawaii, Iowa, New Mexico, Seattle, Utah, and Atlanta).
Rates are per 100,000 and are age-adjusted to the 2000 US Std Population (19 age groups - Census P25-1130).
- Statistic not shown. Rate based on less than 16 cases for the time interval.

Table 23.6
Cancer of the Prostate (Invasive)

Age-adjusted U.S. Death^a Rates by Year, Race and Age

	All Races, Males			White Males			Black Males		
	All	<65	65+	All	<65	65+	All	<65	65+
Year of Death:									
1975-2015	29.26	2.21	216.24	27.14	1.91	201.55	60.49	5.54	440.30
1975-1979	32.04	2.62	235.43	30.08	2.25	222.44	57.10	6.75	405.12
1980	33.05	2.67	243.08	30.77	2.33	227.39	61.99	6.57	445.03
1981	33.17	2.68	243.95	30.76	2.30	227.52	63.61	7.06	454.45
1982	33.36	2.68	245.47	31.09	2.34	229.85	62.36	6.62	447.67
1983	33.92	2.76	249.30	31.57	2.40	233.18	64.55	6.99	462.46
1984	34.06	2.71	250.77	31.58	2.37	233.49	65.93	6.74	475.13
1985	33.91	2.73	249.43	31.28	2.34	231.34	67.26	7.16	482.68
1986	34.93	2.80	256.99	32.46	2.47	239.72	67.39	6.63	487.36
1987	35.11	2.71	259.06	32.57	2.38	241.27	68.88	6.66	499.03
1988	35.88	2.83	264.40	33.38	2.47	247.08	69.57	6.98	502.28
1989	37.10	2.97	273.01	34.54	2.62	255.20	71.71	7.06	518.54
1990	38.56	3.02	284.23	35.67	2.65	263.98	77.98	7.43	565.65
1991	39.31	2.89	291.08	36.50	2.52	271.39	78.24	7.06	570.21
1992	39.22	2.86	290.58	36.29	2.44	270.28	79.84	7.66	578.73
1993	39.34	2.72	292.48	36.26	2.33	270.82	81.86	7.04	599.08
1994	38.54	2.67	286.48	35.64	2.31	266.04	79.96	6.76	585.93
1995	37.29	2.58	277.23	34.41	2.22	256.93	78.20	6.70	572.47
1996	36.00	2.50	267.61	33.00	2.13	246.38	78.84	6.45	579.20
1997	34.15	2.31	254.26	31.35	1.94	234.58	74.30	6.32	544.22
1998	32.63	2.27	242.49	29.89	1.90	223.36	72.77	6.28	532.41
1999	31.56	2.06	235.48	28.91	1.72	216.88	70.13	5.80	514.78
2000	30.39	1.98	226.82	27.78	1.66	208.29	68.90	5.40	507.82
2001	29.52	1.94	220.14	26.97	1.63	202.08	67.82	5.33	499.72
2002	28.71	1.92	213.87	26.36	1.60	197.48	64.98	5.26	477.81
2003	27.19	1.90	201.97	25.02	1.59	186.95	60.37	5.30	441.02
2004	26.19	1.82	194.64	24.04	1.55	179.54	59.00	4.79	433.72
2005	25.40	1.80	188.57	23.33	1.51	174.20	57.02	4.83	417.76
2006	24.24	1.84	179.14	22.34	1.58	165.81	53.73	4.57	393.54
2007	24.23	1.75	179.68	22.23	1.49	165.58	54.88	4.51	403.03
2008	23.01	1.78	169.73	21.34	1.52	158.30	49.11	4.48	357.62
2009	22.12	1.70	163.30	20.34	1.43	151.06	49.35	4.45	359.70
2010	21.81	1.78	160.29	20.10	1.51	148.61	48.08	4.40	350.01
2011	20.78	1.66	152.98	19.25	1.39	142.73	43.97	4.25	318.55
2012	19.56	1.66	143.32	18.13	1.44	133.50	41.63	3.86	302.73
2013	19.26	1.67	140.90	18.00	1.44	132.46	39.13	3.94	282.35
2014	19.10	1.66	139.69	17.90	1.42	131.81	37.99	3.95	273.32
2015	18.93	1.64	138.38	17.71	1.41	130.39	37.53	3.83	270.49

^a Individual rates for years of death 1975-1979 available in web browser version of [Cancer Statistics Review](#).
US Mortality Files, National Center for Health Statistics, Centers for Disease Control and Prevention.
Rates are per 100,000 and are age-adjusted to the 2000 US Std Population (19 age groups - Census P25-1130).
- Statistic not shown. Rate based on less than 16 cases for the time interval.

Table 23.7
Cancer of the Prostate (Invasive)

SEER Incidence^a and U.S. Death^b Rates, Age-Adjusted and Age-Specific Rates, by Race

	SEER Incidence ^a			U.S. Mortality ^b		
	All Races Males	White Males	Black Males	All Races Males	White Males	Black Males
<u>Age-Adjusted Rates, 2011-2015</u>						
Age at Diagnosis/Death:						
All ages	112.6	105.7	178.3	19.5	18.2	39.9
Under 65	44.9	40.9	83.4	1.7	1.4	4.0
65 and over	580.7	553.1	834.3	142.9	134.0	288.4
All ages (WHO world std) ^c	85.7	80.2	139.0	10.9	10.0	23.0
<u>Age-Specific Rates, 2011-2015</u>						
Age at Diagnosis/Death:						
<1	-	-	-	-	-	-
1-4	-	-	-	-	-	-
5-9	-	-	-	-	-	-
10-14	-	-	-	-	-	-
15-19	-	-	-	-	-	-
20-24	-	-	-	-	-	-
25-29	-	-	-	-	-	-
30-34	0.1	-	-	-	-	-
35-39	0.7	0.6	1.6	0.0	-	-
40-44	8.1	6.9	19.9	0.2	0.1	0.4
45-49	36.0	29.9	89.4	0.8	0.7	1.8
50-54	116.9	104.8	228.7	3.1	2.7	7.3
55-59	251.0	228.8	460.8	8.5	7.1	20.5
60-64	423.2	394.7	721.5	19.7	17.0	47.5
65-69	651.7	616.1	1,017.6	38.4	34.0	92.0
70-74	673.1	641.7	959.3	70.7	63.6	166.4
75-79	589.3	560.5	796.1	126.3	116.2	273.3
80-84	444.2	425.2	582.5	219.9	207.3	447.2
85+	376.9	366.5	529.0	461.8	446.0	816.2

^a SEER 18 areas. Rates are per 100,000 and are age-adjusted to the 2000 US Std Population (19 age groups - Census P25-1130), unless noted.

^b US Mortality Files, National Center for Health Statistics, Centers for Disease Control and Prevention.

^c Rates are per 100,000 and are age-adjusted to the 2000 US Std Population (19 age groups - Census P25-1130), unless noted.

- Rates are per 100,000 and are age-adjusted to the world (WHO 2000-2025) standard million.

- Statistic not shown. Rate based on less than 16 cases for the time interval.

Table 23.8
Cancer of the Prostate (Invasive)

5-Year Relative and Period Survival (Percent) by Race, Diagnosis Year, Stage and Age

	All Races, Males			White Males			Black Males		
	All	<65	65+	All	<65	65+	All	<65	65+
5-Year Relative Survival (Percent)									
Year of Diagnosis:									
1960-1963 ^a	-	-	-	50	-	-	35	-	-
1970-1973 ^a	-	-	-	63	-	-	55	-	-
1975-1977 ^b	67.8	73.4	66.1	68.5	75.2	66.6	60.7	62.0	60.1
1978-1980 ^b	70.1	75.2	68.6	71.2	76.7	69.6	62.1	65.0	60.6
1981-1983 ^b	72.0	76.0	70.9	73.1	77.6	71.9	62.8	65.0	61.9
1984-1986 ^b	75.2	77.4	74.6	76.4	79.1	75.7	65.7	67.3	64.9
1987-1989 ^b	82.8	83.2	82.7	84.4	84.7	84.3	71.1	72.7	70.6
1990-1992 ^b	92.9	93.0	92.9	94.1	94.0	94.1	84.5	86.8	83.6
1993-1995 ^b	95.2	95.9	94.9	96.0	96.6	95.7	91.8	93.4	90.9
1996-1998 ^b	97.4	98.5	96.7	97.9	99.0	97.4	95.0	96.7	93.6
1999-2001 ^b	99.3	99.1	99.3	99.7	99.5	99.6	97.4	98.0	96.4
2002-2004 ^b	99.7	99.5	99.7	99.8	99.6	99.7	97.9	99.1	96.2
2005-2007 ^b	99.6	99.5	99.6	99.6	99.5	99.6	97.6	97.9	97.2
2008-2014 ^b	98.9 ^f	99.4 ^f	98.4 ^f	99.2 ^f	99.7 ^f	98.8 ^f	97.1 ^f	98.2 ^f	95.4 ^f
5-Year Period Survival (Percent) ^{cd}									
2014	97.7	98.4	97.1	97.6	98.5	97.0	95.5	97.4	93.1
Stage Distribution (%) 2008-2014 ^{ce}									
All Stages									
Number of cases	345,915	154,946	190,969	262,495	113,650	148,845	53,692	29,921	23,771
Percent	100%	100%	100%	100%	100%	100%	100%	100%	100%
Localized	78	78	78	78	78	78	80	80	80
Regional	12	16	10	13	17	10	10	13	7
Distant	5	4	6	5	3	6	6	5	8
Unstaged/Unknown	4	2	6	3	2	5	3	2	5
5-Year Relative Survival (Percent), 2008-2014 ^c									
Age at Diagnosis:									
Ages <45	96.0	-	-	94.9	-	-	97.5	-	-
Ages 45-54	97.7	-	-	97.6	-	-	97.7	-	-
Ages 55-64	99.0	-	-	99.2	-	-	97.5	-	-
Ages 65-74	100.0	-	-	100.0	-	-	97.1	-	-
Ages 75+	92.4	-	-	92.1	-	-	85.2	-	-
Ages <65	98.6	-	-	98.8	-	-	97.6	-	-
Ages 65+	97.9	-	-	98.0	-	-	94.1	-	-
Stage ^e :									
All Stages	98.2	98.6	97.9	98.3	98.8	98.0	96.1	97.6	94.1
Localized	100.0	100.0	100.0	100.0	100.0	100.0	100.0	100.0	100.0
Regional	100.0	100.0	100.0	100.0	99.8	100.0	100.0	100.0	99.3
Distant	30.0	33.6	28.3	29.1	32.7	27.6	30.0	33.3	27.3
Unstaged/Unknown	80.9	91.1	77.5	73.8	88.0	69.6	68.7	84.8	60.7

^a Based on End Results data from a series of hospital registries and one population-based registry.^b SEER 9 areas (San Francisco, Connecticut, Detroit, Hawaii, Iowa, New Mexico, Seattle, Utah, Atlanta).^c Based on follow-up of patients into 2015. [Expected survival rates](#) are derived from the U.S. Annual Life Tables.^c SEER 18 areas (San Francisco, Connecticut, Detroit, Hawaii, Iowa, New Mexico, Seattle, Utah, Atlanta, San Jose-Monterey, Los Angeles, Alaska Native Registry, Rural Georgia, California excluding SF/SJM/LA, Kentucky, Louisiana, New Jersey and Georgia excluding ATL/RG). Expected survival rates are derived from life tables by socio-economic status, geography and race developed by the SEER program.^d Based on follow-up of patients into 2015.^d Period survival provides a 2014 estimate of survival by piecing together the most recent conditional survival estimates from several cohorts. It is computed here using three year calendar blocks (2010-2012: 0-1 year survival), (2009-2011: 1-2 year survival), (2008-2010: 2-3 year survival), (2007-2009: 3-4 year survival), (2006-2008: 4-5 years survival).^e Stage at diagnosis is classified using SEER Summary Stage 2000. Stage distribution percentages may not sum to 100 due to rounding.^f The difference between 1975-1977 and 2008-2014 is statistically significant (p<.05).^g The standard error is between 5 and 10 percentage points.^h The standard error is greater than 10 percentage points.⁻ Statistic could not be calculated due to fewer than 25 cases during the time period.

Table 23.9
Cancer of the Prostate (Invasive)
SEER^a Relative Survival (Percent)
By Year of Diagnosis

All Races, Males

Year of Diagnosis

	1975- 1979	1980- 1984	1985- 1989	1990- 1994	1995	1996	1997	1998	1999	2000	2001	2002	2003	2004	2005	2006	2007	2008	2009	2010	2011	2012	2013	2014
Survival Time																								
1-year	91.4	93.5	95.6	98.8	98.7	99.1	99.3	99.5	99.6	99.7	99.8	99.8	99.7	99.8	99.8	99.8	99.8	99.7	99.7	99.6	99.6	99.3	99.4	98.6
2-year	84.5	87.4	91.0	97.3	97.6	98.0	98.8	98.9	99.6	99.5	99.8	99.8	99.6	99.7	99.6	99.7	99.8	99.6	99.4	99.5	99.4	98.7	98.7	
3-year	78.3	81.5	86.9	96.0	96.9	97.4	98.4	98.5	99.5	99.1	99.8	99.7	99.4	99.7	99.5	99.7	99.8	99.3	99.3	99.5	99.2	98.3		
4-year	73.2	76.4	83.5	94.9	96.3	96.8	97.9	98.2	99.2	98.9	99.8	99.7	99.4	99.7	99.4	99.6	99.8	99.2	99.3	99.5	99.2			
5-year	68.7	72.0	80.5	93.8	95.7	96.4	97.4	98.1	99.2	98.8	99.8	99.7	99.1	99.7	99.2	99.5	99.8	99.2	99.3	99.5				
6-year	65.3	68.5	77.9	92.7	95.4	96.0	97.2	97.9	99.2	98.5	99.8	99.7	99.1	99.7	99.2	99.5	99.8	99.2	99.3					
7-year	61.8	65.0	75.4	91.6	94.9	95.4	97.1	97.6	99.0	98.4	99.8	99.7	99.0	99.7	99.2	99.5	99.8	99.2						
8-year	58.5	61.9	73.3	90.6	94.6	94.9	97.0	97.6	98.7	98.2	99.8	99.7	99.0	99.7	99.2	99.5	99.8							
9-year	55.8	59.7	71.4	89.5	94.2	94.4	96.6	97.0	98.5	98.2	99.8	99.7	98.5	99.6	99.2	99.5								
10-year	53.2	57.7	69.6	88.5	93.5	94.3	96.5	96.6	98.0	98.1	99.8	99.7	98.4	99.4	99.2									
11-year	50.6	55.5	67.9	87.5	92.8	93.9	96.3	96.1	97.9	97.3	99.8	99.7	98.2	99.1										
12-year	48.4	53.5	66.1	86.6	91.9	93.5	96.0	95.5	97.4	97.2	99.8	99.7	97.8											
13-year	46.5	51.7	64.4	85.9	90.9	93.0	95.2	95.2	97.1	96.7	99.8	99.7												
14-year	44.8	50.1	63.0	85.1	90.0	92.7	94.7	94.9	96.6	96.1	99.8													
15-year	43.6	48.7	61.5	84.1	89.2	92.1	94.5	94.9	95.8	95.5														
16-year	41.9	46.9	60.0	83.3	88.8	91.1	94.0	94.3	95.6															
17-year	40.1	45.8	59.4	82.4	87.8	90.6	93.4	93.9																
18-year	38.8	44.4	58.3	81.7	87.6	90.3	92.7																	
19-year	38.0	43.0	57.8	80.7	87.2	89.5																		
20-year	37.0	41.7	56.9	80.3	85.5																			
21-year	35.4	40.8	56.0	79.5																				
22-year	34.0	39.5	54.7																					
23-year	33.1	38.3	53.5																					
24-year	32.4	37.4	52.4																					
25-year	30.9	35.8	51.2																					
26-year	30.4	34.7	50.2																					
27-year	29.7	34.4																						
28-year	29.0	33.9																						
29-year	28.4	33.2																						
30-year	26.9	32.3																						

^a Based on the SEER 9 areas (San Francisco, Connecticut, Detroit, Hawaii, Iowa, New Mexico, Seattle, Utah, and Atlanta). [Expected survival rates](#) are derived from the U.S. Annual Life Tables.

Table 23.10
Cancer of the Prostate (Invasive)

Risk of Being Diagnosed With Cancer in 10, 20 and 30 Years,
Lifetime Risk of Being Diagnosed with Cancer Given Alive and Cancer-Free at Current Age, and
Lifetime Risk of Dying from Cancer Given Alive at Current Age
Males, 2013-2015 By Race/Ethnicity

Race/ Ethnicity	Current Age	Risk of Being Diagnosed with Cancer				Risk of Dying from Cancer	Race/ Ethnicity	Current Age	Risk of Being Diagnosed with Cancer				Risk of Dying from Cancer
		+10 yrs	+20 yrs	+30 yrs	Ever				+10 yrs	+20 yrs	+30 yrs	Ever	
All Races	0	0.00	0.00	0.00	11.18	2.42	Asian/ Pacific Islander	0	0.00	0.00	0.00	7.32	2.13
	10	0.00	0.00	0.01	11.31	2.45		10	0.00	0.00	0.00	7.38	2.15
	20	0.00	0.01	0.23	11.36	2.47		20	0.00	0.00	0.06	7.40	2.15
	30	0.01	0.23	1.84	11.50	2.50		30	0.00	0.06	0.71	7.44	2.16
	40	0.23	1.86	5.92	11.68	2.54		40	0.06	0.72	2.95	7.49	2.18
	50	1.68	5.88	9.85	11.83	2.62		50	0.66	2.93	5.61	7.54	2.20
	60	4.59	8.93	10.69	11.10	2.77		60	2.37	5.17	6.64	7.19	2.26
	70	5.30	7.44	-	7.94	2.92		70	3.12	4.76	-	5.38	2.33
80	3.20	-	-	3.93	2.99	80	2.08	-	-	2.86	2.39		
White	0	0.00	0.00	0.00	10.46	2.27	American Indian/ Alaska Native ^a	0	0.00	0.00	0.00	5.53	2.05
	10	0.00	0.00	0.01	10.57	2.30		10	0.00	0.00	0.00	5.60	2.08
	20	0.00	0.01	0.20	10.61	2.31		20	0.00	0.00	0.08	5.64	2.10
	30	0.01	0.20	1.64	10.74	2.34		30	0.00	0.08	0.63	5.76	2.15
	40	0.20	1.66	5.44	10.91	2.38		40	0.08	0.65	2.45	5.96	2.23
	50	1.51	5.42	9.19	11.06	2.45		50	0.60	2.50	4.56	6.20	2.37
	60	4.26	8.38	10.05	10.42	2.59		60	2.09	4.35	5.76	6.14	2.58
	70	4.99	7.01	-	7.46	2.73		70	2.71	4.38	-	4.85	2.85
80	3.02	-	-	3.68	2.82	80	2.46	-	-	3.14	2.90		
Black	0	0.00	0.00	0.00	14.77	3.97	Hispanic ^b	0	0.00	0.00	0.00	10.39	2.77
	10	0.00	0.00	0.02	15.08	4.06		10	0.00	0.00	0.00	10.49	2.80
	20	0.00	0.02	0.53	15.18	4.09		20	0.00	0.00	0.13	10.53	2.81
	30	0.02	0.54	3.43	15.47	4.16		30	0.00	0.13	1.23	10.64	2.84
	40	0.54	3.50	9.51	15.87	4.27		40	0.13	1.24	4.59	10.76	2.87
	50	3.12	9.44	14.09	16.13	4.46		50	1.14	4.57	8.41	10.90	2.93
	60	7.28	12.65	14.46	15.00	4.82		60	3.67	7.77	9.76	10.43	3.05
	70	7.34	9.83	-	10.57	5.29		70	4.78	7.10	-	7.88	3.18
80	4.25	-	-	5.50	5.67	80	3.19	-	-	4.26	3.21		

Devcan 6.7.6, April 2018, National Cancer Institute (<https://surveillance.cancer.gov/devcan/>).

Source: Incidence data are from the SEER 18 areas (San Francisco, Connecticut, Detroit, Hawaii, Iowa, New Mexico, Seattle, Utah, Atlanta, San Jose-Monterey, Los Angeles, Alaska Native Registry, Rural Georgia, California excluding SF/SJM/LA, Kentucky, Louisiana, New Jersey, and Georgia excluding ATL/RG). Mortality data are from the NCHS public use data file for the total US.

^a Underlying incidence and mortality data for American Indian/Alaska Native are based on the CHSDA (Contract Health Service Delivery Area) counties.

^b Hispanic is not mutually exclusive from whites, blacks, Asian/Pacific Islanders, and American Indians/Alaska Natives. Underlying incidence data for Hispanics are based on NHIA and exclude cases from the Alaska Native Registry.

- Statistic could not be calculated.

A percent of 0.00 represents a value that is below 0.005.

Table 23.11
Cancer of the Prostate (Invasive)

SEER Incidence and U.S. Mortality
Age-Adjusted Rates and Trends^a
By Race/Ethnicity

SEER Incidence	SEER 18 Areas ^b	SEER 13 Areas ^b	SEER 9 Areas ^b
	Rate 2011-2015	Trend 2006-2015 ^c	Trend 2006-2015 ^d
	Rate per 100,000 persons	AAPC (%)	AAPC (%)
RACE/ETHNICITY	Males	Males	Males
All Races	112.6	-5.9*	-5.7*
White	105.7	-6.2*	-6.0*
White Hispanic ^e	88.8	-7.3*	-
White Non-Hispanic ^e	108.8	-6.2*	-
Black	178.3	-5.8*	-5.5*
Asian/Pacific Islander	59.1	-7.2*	-
Amer Ind/Alaska Nat ^f	54.8	-6.7*	-
Hispanic ^e	91.8	-6.6*	-
<u>U.S. Mortality^g</u>			
	Rate 2011-2015	Trend 2006-2015 ^h	
	Rate per 100,000 persons	AAPC (%)	
RACE/ETHNICITY	Males	Males	
All Races	19.5	-2.9*	
White	18.2	-2.7*	
White Hispanic ^e	16.8	-2.5*	
White Non-Hispanic ^e	18.2	-2.7*	
Black	39.9	-4.2*	
Asian/Pacific Islander	8.8	-3.2*	
Amer Ind/Alaska Nat			
Total U.S.	14.7	-2.6*	
CHSDA Counties	19.8	-1.5*	
Non-CHSDA Counties	9.3	-4.1*	
Hispanic ^e	16.2	-2.8*	

The AAPC is the Average Annual Percent Change over the time interval. The AAPCs are calculated by the Joinpoint Regression Program Version 4.6, February 2018, National Cancer Institute.

- Statistic not shown. Rate based on less than 16 cases for the time interval.

Trend based on less than 10 cases for at least one year within the time interval.

^a Rates are age-adjusted to the 2000 US Std Population (19 age groups - Census P25-1130). Trends are based on rates age-adjusted to the 2000 US Std Population (19 age groups - Census P25-1130).

^b The SEER 9 areas are San Francisco, Connecticut, Detroit, Hawaii, Iowa, New Mexico, Seattle, Utah, and Atlanta.

The SEER 13 areas comprise the SEER 9 areas plus San Jose-Monterey, Los Angeles, the Alaska Native Registry, and Rural Georgia.

The SEER 18 areas comprise the SEER 13 areas plus California excluding SF/SJM/LA, Kentucky, Louisiana, New Jersey, and Georgia excluding ATL/RG.

^c The 2006-2015 AAPC estimates are based on a Joinpoint analysis with up to 4 Joinpoints over diagnosis years 1992-2015.

^d The 2006-2015 AAPC estimates are based on a Joinpoint analysis with up to 5 Joinpoints over diagnosis years 1975-2015.

^e Hispanic and Non-Hispanic are not mutually exclusive from whites, blacks, Asian/Pacific Islanders, and American Indians/Alaska Natives. Incidence data for Hispanics and Non-Hispanics are based on NHIA and exclude cases from the Alaska Native Registry. The 2006-2015 Hispanic and Non-Hispanic mortality trends exclude deaths from New Hampshire and Oklahoma.

^f Incidence data for American Indian/Alaska Native are based on the CHSDA (Contract Health Service Delivery Area) counties.

^g US Mortality Files, National Center for Health Statistics, CDC.

^h The 2006-2015 mortality AAPCs are based on a Joinpoint analysis using years of death 1992-2015.

* The APC is significantly different from zero (p<.05).

Table 23.12
Cancer of the Prostate (Invasive)

Age-Adjusted SEER Incidence Rates^a
By Registry, Race and Age

	All Races			Whites			Blacks		
	All Ages	Ages <65	Ages 65+	All Ages	Ages <65	Ages 65+	All Ages	Ages <65	Ages 65+
<u>SEER Incidence Rates^a, 2011-2015</u>									
California	101.18	38.02	537.73	97.69	36.45	521.03	154.17	74.92	701.95
Greater Bay Area	104.75	40.91	546.04	107.86	42.44	560.10	160.82	79.55	722.55
San Francisco-Oakland	104.35	41.27	540.41	105.47	41.86	545.15	164.66	82.00	736.04
San Jose-Monterey	105.55	40.27	556.83	112.04	43.45	586.19	138.78	67.47	631.71
Los Angeles	98.19	36.74	522.95	91.24	33.18	492.58	154.05	74.01	707.31
Greater California	101.23	37.56	541.30	97.21	35.98	520.44	151.00	73.50	686.69
Connecticut	112.82	47.29	565.82	106.25	43.14	542.51	164.93	76.77	774.32
Detroit	143.05	62.93	696.87	127.73	52.31	649.03	199.81	102.92	869.53
Georgia	123.28	52.33	613.69	103.81	40.15	543.89	193.01	87.06	925.32
Atlanta	137.08	57.24	689.00	116.50	44.17	616.45	195.00	86.94	941.93
Rural Georgia	127.45	59.19	599.24	107.05	45.94	529.48	174.32	80.85	820.45
Greater Georgia	117.38	49.62	585.75	99.59	38.39	522.63	192.44	87.40	918.51
Hawaii	86.90	28.27	492.19	84.80	30.69	458.79	171.68	104.96	632.83
Iowa	108.00	43.11	556.60	105.91	42.07	547.18	169.84	81.31	781.76
Kentucky	108.84	45.22	548.62	98.93	38.95	513.52	156.16	71.45	741.70
Louisiana	137.42	58.98	679.64	120.71	49.35	614.02	190.75	85.40	919.01
New Jersey	134.73	55.67	681.18	123.90	50.07	634.23	190.67	85.38	918.51
New Mexico	82.40	31.49	434.29	81.88	31.80	428.09	113.85	52.39	538.72
Seattle-Puget Sound	114.62	43.04	609.43	115.19	43.16	613.12	155.78	76.51	703.68
Utah	120.93	46.32	636.66	121.02	46.64	635.18	155.00	65.13	776.20
SEER 9 Areas ^b	114.46	46.28	585.70	109.89	43.27	570.40	182.42	87.81	836.45
SEER 13 Areas ^b	110.32	43.80	570.14	106.25	41.20	555.95	174.74	84.40	799.17
SEER 18 Areas ^b	112.64	44.92	580.74	105.66	40.93	553.09	178.34	83.45	834.27

^a Rates are per 100,000 and are age-adjusted to the 2000 US Std Population (19 age groups - Census P25-1130)

^b The SEER 9 areas are San Francisco, Connecticut, Detroit, Hawaii, Iowa, New Mexico, Seattle, Utah and Atlanta.

The SEER 13 areas comprise the SEER 9 areas plus San Jose-Monterey, Los Angeles, the Alaska Native Registry and Rural Georgia.

The SEER 18 areas comprise the SEER 13 areas plus California excluding SF/SJM/LA, Kentucky, Louisiana, New Jersey and Georgia excluding ATL/RG.

- Statistic not shown. Rate based on less than 16 cases for the time interval.

Table 23.13
Cancer of the Prostate (Invasive)

Age-Adjusted SEER Death Rates^a
By Registry, Race and Age

	All Races			Whites			Blacks		
	All Ages	Ages <65	Ages 65+	All Ages	Ages <65	Ages 65+	All Ages	Ages <65	Ages 65+
<u>SEER Death Rates^a, 2011-2015</u>									
California	19.73	1.55	145.39	20.28	1.50	150.07	41.90	4.50	300.47
Greater Bay Area	17.42	1.30	128.83	18.81	1.26	140.08	41.58	4.98	294.59
San Francisco-Oakland	17.36	1.41	127.63	18.02	1.25	133.99	43.22	5.45	304.31
San Jose-Monterey	17.53	1.10	131.14	20.17	1.30	150.65	31.15	-	228.27
Los Angeles	19.26	1.53	141.81	19.06	1.38	141.22	44.26	4.56	318.69
Greater California	20.74	1.64	152.76	21.13	1.61	156.08	39.76	4.19	285.60
Connecticut	17.96	1.40	132.42	17.37	1.23	128.97	30.81	3.60	218.89
Detroit	20.31	1.76	148.49	16.85	1.25	124.67	36.75	3.86	264.08
Georgia	22.49	2.00	164.08	17.72	1.44	130.28	44.73	3.69	328.42
Atlanta	25.96	2.16	190.46	19.34	1.45	143.05	47.46	3.75	349.64
Rural Georgia	31.70	-	233.25	25.06	-	182.74	53.09	-	399.73
Greater Georgia	20.89	1.91	152.11	16.99	1.41	124.67	42.67	3.68	312.23
Hawaii	13.69	1.43	98.45	18.62	1.32	138.19	-	-	-
Iowa	19.54	1.56	143.85	19.55	1.56	143.91	23.51	-	174.98
Kentucky	19.47	1.28	145.23	18.80	1.21	140.40	35.32	2.49	262.27
Louisiana	21.56	2.23	155.14	17.10	1.48	125.07	38.88	4.24	278.31
New Jersey	18.53	1.44	136.66	16.88	1.19	125.37	41.48	3.80	301.88
New Mexico	20.30	1.49	150.32	20.33	1.54	150.28	30.17	-	228.52
Seattle-Puget Sound	19.76	1.56	145.56	19.88	1.55	146.56	33.87	3.17	246.12
Utah	20.43	1.38	152.07	20.66	1.43	153.64	-	-	-
SEER 9 Areas ^b	19.36	1.58	142.30	18.84	1.40	139.37	39.08	3.84	282.68
SEER 13 Areas ^b	19.27	1.55	141.78	18.96	1.40	140.32	40.55	3.96	293.45
SEER 18 Areas ^b	19.79	1.60	145.47	19.06	1.42	140.96	40.43	3.91	292.91
Total U.S.	19.50	1.66	142.85	18.18	1.42	134.03	39.92	3.96	288.44

^a US Mortality Files, National Center for Health Statistics, Centers for Disease Control and Prevention. Rates are per 100,000 and are age-adjusted to the 2000 US Std Population (19 age groups - Census P25-1130).

^b The SEER 9 areas are San Francisco, Connecticut, Detroit, Hawaii, Iowa, New Mexico, Seattle, Utah and Atlanta. The SEER 13 areas comprise the SEER 9 areas plus San Jose-Monterey, Los Angeles, the Alaska Native Registry and Rural Georgia. The SEER 18 areas comprise the SEER 13 areas plus California excluding SF/SJM/LA, Kentucky, Louisiana, New Jersey and Georgia excluding ATL/RG.

- Statistic not shown. Rate based on less than 16 cases for the time interval.

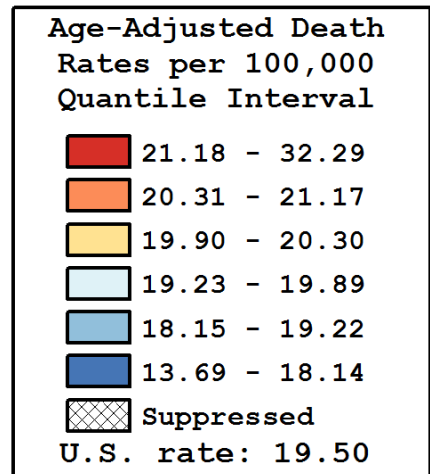
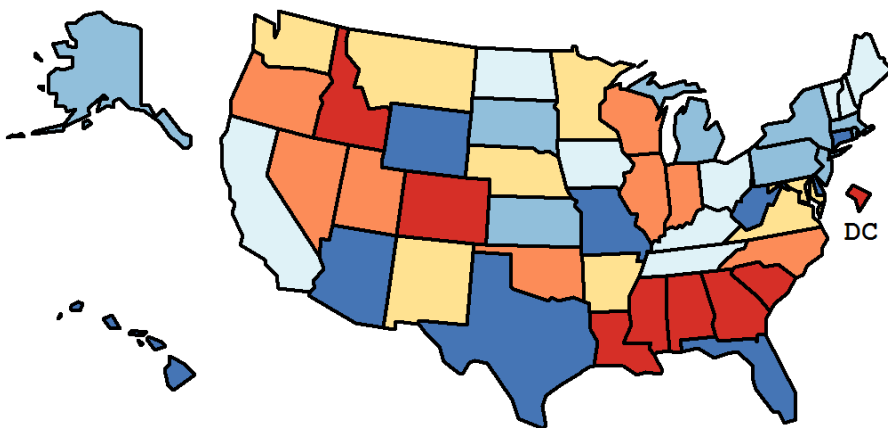
Table 23.14
Cancer of the Prostate (Invasive)

Age-Adjusted Cancer Death^a Rates By State, All Races, 2011-2015

Males

State	Rate	SE	Rank(CI) ^d	PD
TOTAL U.S.	19.50	0.05		
High Five States				
D.C.	32.29	1.72	01(01,01)	65.55 ^c
Mississippi	25.23	0.65	02(02,03)	29.34 ^c
Idaho	23.56	0.82	03(02,20)	20.78 ^c
Alabama	22.68	0.47	04(02,08)	16.28 ^c
Georgia	22.49	0.37	05(03,09)	15.31 ^c
Low Five States				
Arizona	17.82	0.33	47(39,50)	-8.63
West Virginia	17.61	0.61	48(29,50)	-9.71
Florida	17.14	0.17	49(46,50)	-12.09 ^c
Wyoming	16.26	1.13	50(08,50)	-16.65 ^c
Hawaii	13.69	0.61	51(51,51)	-29.80 ^c

State	Rate	SE	Rank(CI) ^d	PD	State	Rate	SE	Rank(CI) ^d	PD
Alabama	22.68	0.47	04(02,08)	16.28 ^c	Montana	20.23	0.87	19(03,44)	3.71
Alaska	18.53	1.46	41(03,50)	-5.00	Nebraska	20.25	0.68	18(06,44)	3.85
Arizona	17.82	0.33	47(39,50)	-8.63	Nevada	20.48	0.61	13(06,41)	5.00
Arkansas	20.03	0.54	23(07,42)	2.69	New Hampshire	19.78	0.79	26(08,49)	1.42
California	19.73	0.16	27(22,38)	1.16	New Jersey	18.53	0.30	42(24,46)	-5.01
Colorado	21.40	0.47	08(05,28)	9.76	New Mexico	20.30	0.65	17(07,44)	4.11
Connecticut	17.96	0.45	45(30,50)	-7.93	New York	18.70	0.21	40(27,44)	-4.10
Delaware	18.14	0.90	44(08,50)	-6.98	North Carolina	20.69	0.32	11(07,25)	6.10
D.C.	32.29	1.72	01(01,01)	65.55 ^c	North Dakota	19.39	1.04	33(05,50)	-0.58
Florida	17.14	0.17	49(46,50)	-12.09 ^c	Ohio	19.46	0.27	31(20,42)	-0.24
Georgia	22.49	0.37	05(03,09)	15.31 ^c	Oklahoma	20.54	0.49	12(08,40)	5.32
Hawaii	13.69	0.61	51(51,51)	-29.80 ^c	Oregon	21.06	0.47	10(06,34)	7.97
Idaho	23.56	0.82	03(02,20)	20.78 ^c	Pennsylvania	19.22	0.24	34(23,43)	-1.43
Illinois	20.48	0.27	14(10,31)	5.00	Rhode Island	19.14	0.85	35(07,50)	-1.85
Indiana	20.41	0.38	16(08,34)	4.68	South Carolina	22.49	0.48	06(03,10)	15.31 ^c
Iowa	19.54	0.49	29(14,47)	0.20	South Dakota	18.73	0.94	39(07,50)	-3.95
Kansas	18.78	0.53	38(21,50)	-3.70	Tennessee	19.89	0.38	25(09,37)	1.99
Kentucky	19.47	0.47	30(15,46)	-0.16	Texas	18.14	0.20	43(38,49)	-6.96
Louisiana	21.56	0.49	07(03,18)	10.53 ^c	Utah	20.43	0.67	15(03,29)	4.74
Maine	19.64	0.73	28(08,49)	0.68	Vermont	19.40	1.11	32(03,49)	-0.51
Maryland	20.10	0.41	22(12,42)	3.06	Virginia	20.22	0.35	20(08,32)	3.66
Massachusetts	18.84	0.35	37(23,47)	-3.41	Washington	20.12	0.37	21(12,40)	3.16
Michigan	19.02	0.29	36(24,45)	-2.49	West Virginia	17.61	0.61	48(29,50)	-9.71
Minnesota	19.92	0.40	24(09,38)	2.12	Wisconsin	21.17	0.39	09(06,24)	8.54
Mississippi	25.23	0.65	02(02,03)	29.34 ^c	Wyoming	16.26	1.13	50(08,50)	-16.65 ^c
Missouri	17.96	0.36	46(38,50)	-7.93					



^a US Mortality Files, National Center for Health Statistics, Centers for Disease Control and Prevention. Rates are per 100,000 and are age-adjusted to the 2000 US Std Population (19 age groups - Census P25-1130).

^b Difference between state rate and total U.S. rate is statistically significant ($p < .0002$).

^c Absolute percent difference between state rate and total U.S. rate is 10% or more.

^d Rank of state level death rate and the 95% confidence intervals (low, high) for the rank.

SE Standard error of the rate.

PD Percent difference between state rate and total U.S. rate.

- Statistic not shown. Rate based on less than 16 cases for the time interval.

Table 23.15
Cancer of the Prostate (Invasive)

Estimated United States Cancer Prevalence Counts^a on January 1, 2015
By Race/Ethnicity and Years Since Diagnosis

Years Since Diagnosis	0 to <5	5 to <10	10 to <15	15 to <20	20 to <25	25 to <30	0 to <23 ^e	0 to <40 ^e	>=40 ^g	Complete ^h
<u>Race</u>										
All Races ^b	981,660	939,476	656,389	359,260	153,847	23,136	3,090,636	3,119,586	590	3,120,176
White ^b	782,773	768,615	553,501	306,230	135,779	21,106	2,546,902	2,573,286	716	2,574,002
Black ^b	146,858	128,183	81,941	42,612	14,703	1,552	414,297	416,281	60	416,341
Asian/Pacific Islander ^c	21,828	19,078	12,123	+	+	+	59,808	+	+	+
Hispanic ^d	61,030	52,254	34,415	+	+	+	168,612	+	+	+

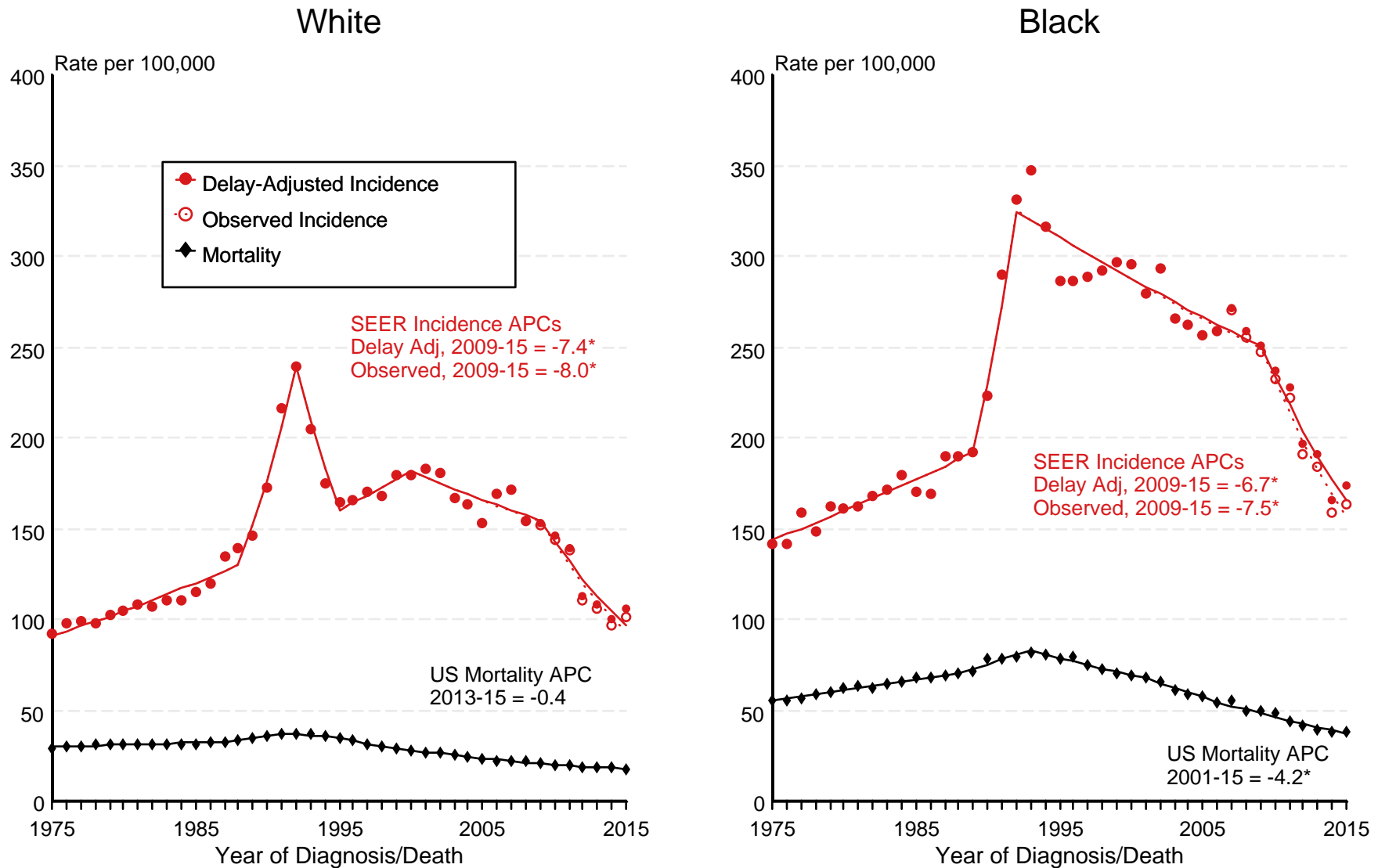
Estimated prevalence percent^a on January 1, 2015, of the SEER^c population diagnosed in the previous 23 years
By Age at Prevalence and Race/Ethnicity

Age at Prevalence	Age Specific (Crude)										Age-Adjusted ^f
	All Ages	0-9	10-19	20-29	30-39	40-49	50-59	60-69	70-79	80+	All Ages
<u>Race</u>											
All Races ^c	1.6751%	0.0002%	0.0002%	0.0002%	0.0012%	0.0677%	0.9736%	4.8480%	12.4068%	16.6658%	1.7710%
White ^c	1.7842%	0.0003%	-	-	0.0010%	0.0592%	0.9167%	4.7630%	12.5530%	16.9015%	1.7740%
Black ^c	1.8923%	-	-	-	0.0028%	0.1840%	1.9843%	8.4955%	18.6947%	22.5273%	2.7481%
Asian/Pacific Islander ^c	0.7733%	-	-	-	-	0.0134%	0.3164%	2.0323%	5.9938%	10.0163%	0.8762%
Hispanic ^d	0.6178%	-	-	-	-	0.0384%	0.5879%	3.2702%	9.5077%	13.6443%	1.3453%

- ^a US 2015 cancer prevalence counts are based on 2015 cancer prevalence proportions from the SEER registries and 1/1/2015 US population estimates based on the average of 2014 and 2015 population estimates from the US Bureau of the Census.
- ^{b c d} Prevalence was calculated using the first invasive tumor for each cancer site diagnosed during the previous 40/23 years. Statistics based on (b) SEER 9 Areas (c) SEER 13 Areas excluding the Alaska Native Registry
- ^e (d) NHIA for Hispanic for SEER 13 Areas excluding the Alaska Native Registry.
- ^f Maximum limited-duration prevalence: 40 years for 1975-2015 SEER 9 data; 23 years for 1992-2015 SEER 13 data (excluding the Alaska Native Registry) used to calculate prevalence for Hispanics and Asian Pacific Islanders.
- ^{g h i} Percentages are age-adjusted to the 2000 US Standard Population (19 age groups - Census P25-1130) by 5-year age groups.
- (g) Cases diagnosed more than 40 years ago were estimated using the completeness index method (Capocaccia et. al. 1997, Merrill et. al. 2000). (h) Complete prevalence is obtained by summing 0 to <40 and >=40. (i) Age-specific completeness index was approximated using empirical data from historical Connecticut tumor registry.
- Statistic not shown. Statistic based on fewer than 5 cases estimated alive in SEER for the time interval.
- + Not available.

Figure 23.1

SEER Observed Incidence, SEER Delay Adjusted Incidence and US Death Rates^a Cancer of the Prostate, by Race



Source: SEER 9 areas and US Mortality Files (National Center for Health Statistics, CDC).

^a Rates are age-adjusted to the 2000 US Std Population (19 age groups - Census P25-1103).

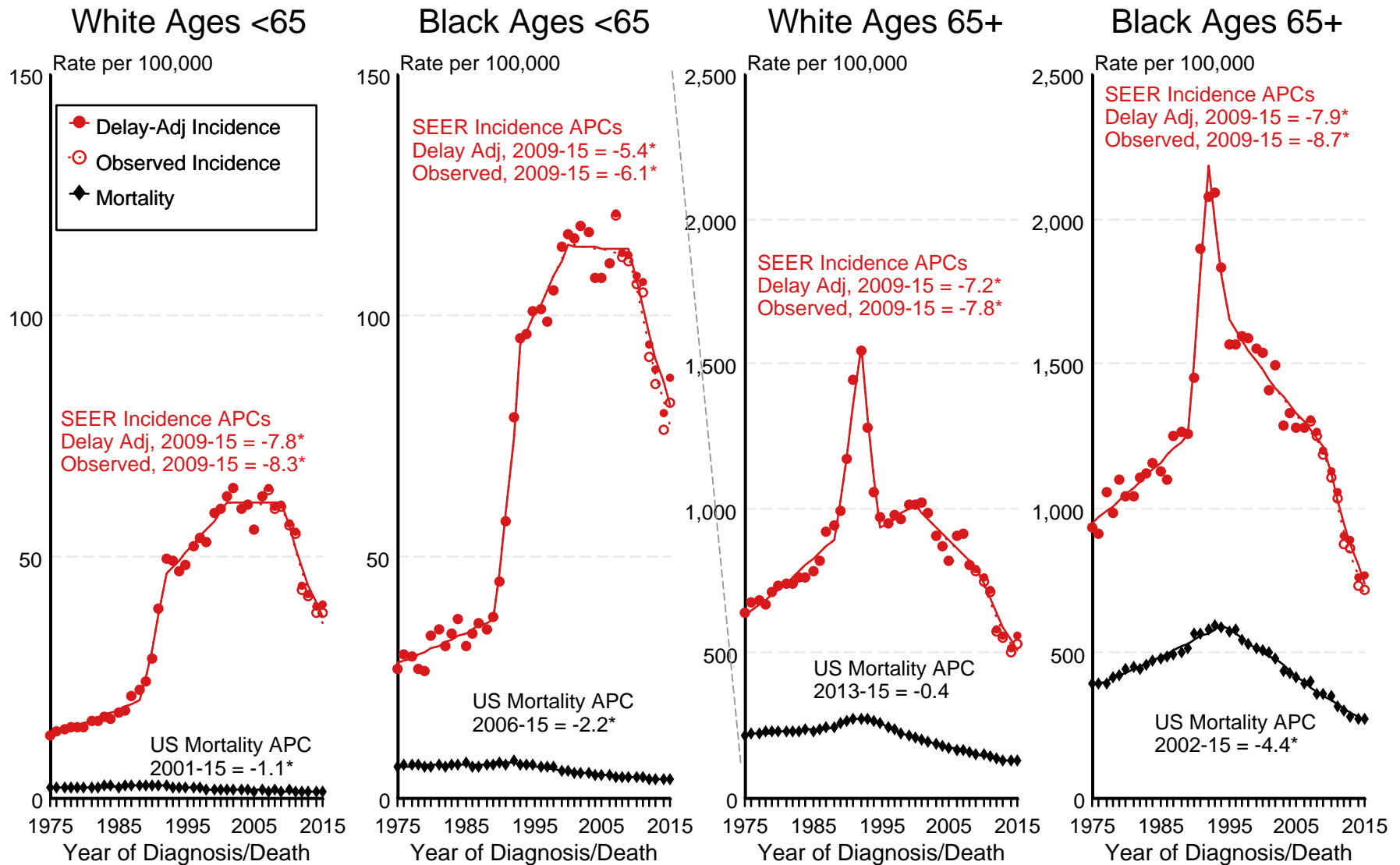
Regression lines and APCs are calculated using the Joinpoint Regression Program Version 4.6, February 2018, National Cancer Institute.

The APC is the Annual Percent Change for the regression line segments. The APC shown on the graph is for the most recent trend.

* The APC is significantly different from zero ($p < 0.05$).

Figure 23.2

SEER Observed Incidence, SEER Delay Adjusted Incidence and US Death Rates^a Cancer of the Prostate, by Age and Race



Source: SEER 9 areas and US Mortality Files (National Center for Health Statistics, CDC).

^a Rates are age-adjusted to the 2000 US Std Population (19 age groups - Census P25-1103).

Regression lines and APCs are calculated using the Joinpoint Regression Program Version 4.6, February 2018, National Cancer Institute.

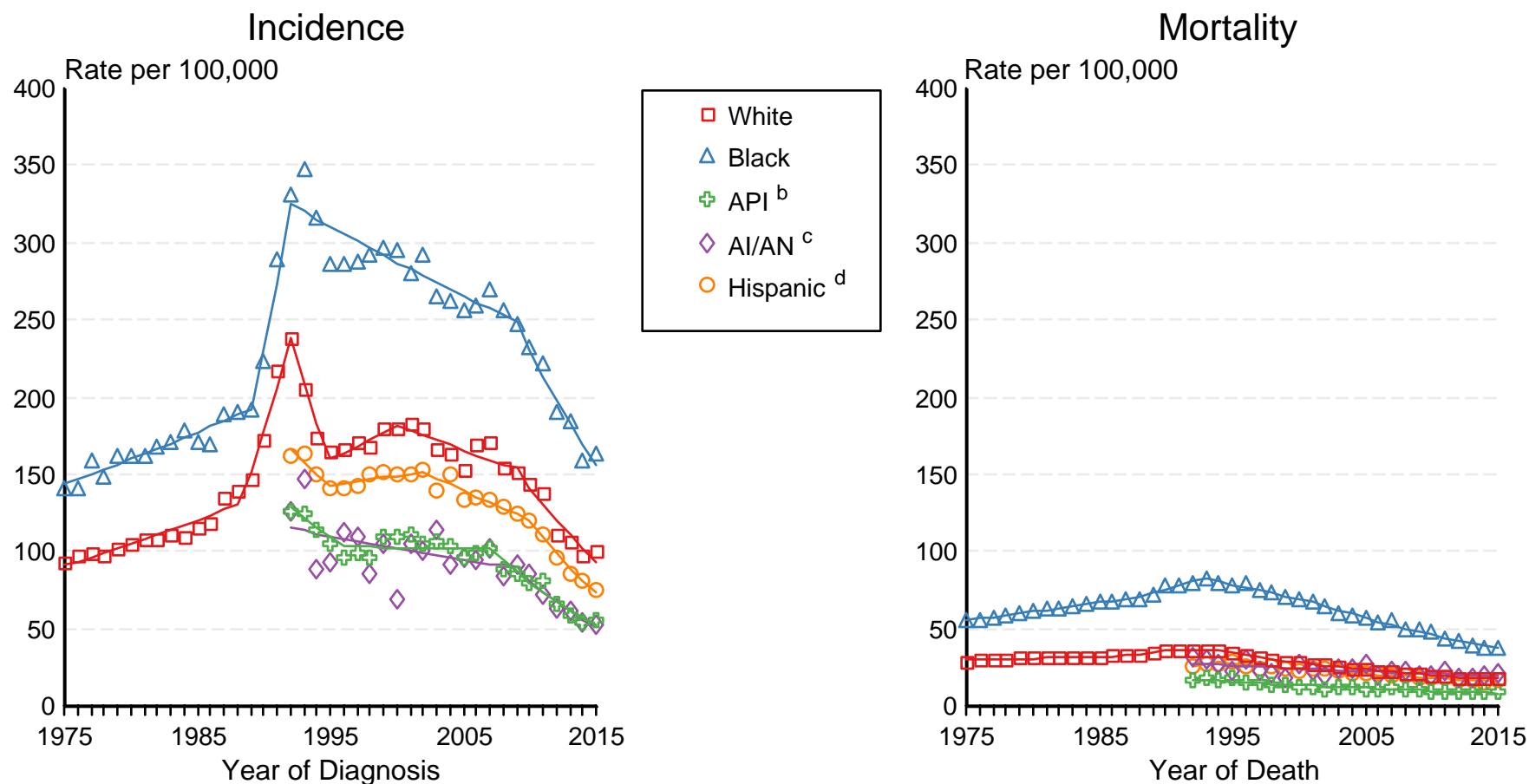
The APC is the Annual Percent Change for the regression line segments. The APC shown on the graph is for the most recent trend.

* The APC is significantly different from zero ($p < 0.05$).

Figure 23.3

SEER Incidence and US Death Rates^a Cancer of the Prostate

Joinpoint Analyses for Whites and Blacks from 1975-2015
and for Asian/Pacific Islanders, American Indians/Alaska Natives and Hispanics from 1992-2015



Source: Incidence data for whites and blacks are from the SEER 9 areas (San Francisco, Connecticut, Detroit, Hawaii, Iowa, New Mexico, Seattle, Utah, Atlanta). Incidence data for Asian/Pacific Islanders, American Indians/Alaska Natives and Hispanics are from the SEER 13 Areas (SEER 9 Areas, San Jose-Monterey, Los Angeles, Alaska Native Registry and Rural Georgia). Mortality data are from US Mortality Files, National Center for Health Statistics, CDC.

^a Rates are age-adjusted to the 2000 US Std Population (19 age groups - Census P25-1103).

Regression lines are calculated using the Joinpoint Regression Program Version 4.6, February 2018, National Cancer Institute. Joinpoint analyses for Whites and Blacks during the 1975-2015 period allow a maximum of 5 joinpoints. Analyses for other ethnic groups during the period 1992-2015 allow a maximum of 4 joinpoints.

^b API = Asian/Pacific Islander.

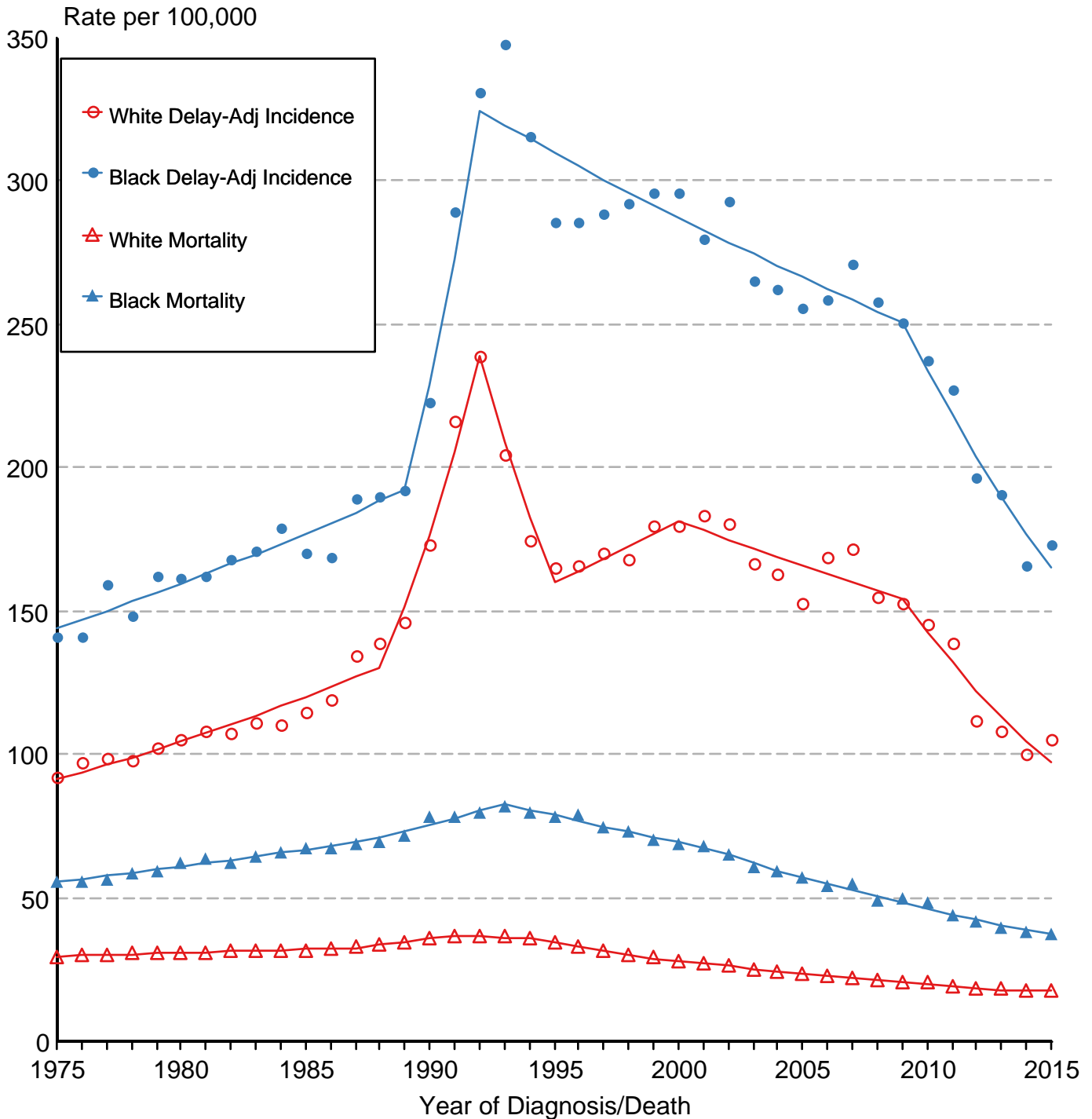
^c AI/AN = American Indian/Alaska Native. Rates for American Indian/Alaska Native are based on the CHSDA(Contract Health Service Delivery Area) counties.

^d Hispanic is not mutually exclusive from whites, blacks, Asian/Pacific Islanders, and American Indians/Alaska Natives. Incidence data for Hispanics are based on NHIA and exclude cases from the Alaska Native Registry. Mortality data for Hispanics exclude cases from New Hampshire and Oklahoma.

Figure 23.4

Cancer of the Prostate

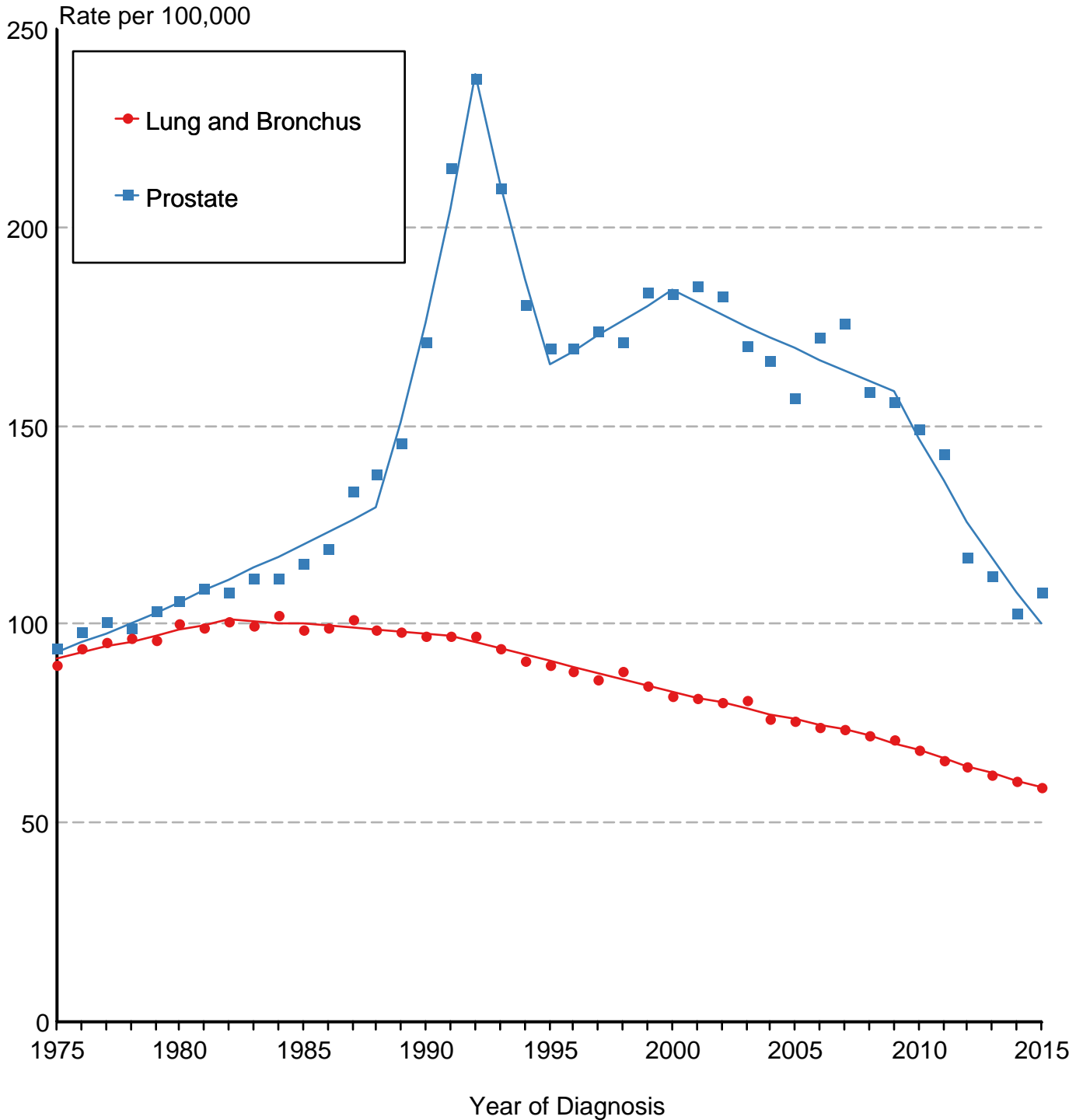
Delay-Adjusted SEER Incidence & US Mortality 1975-2015



Source: SEER 9 areas and US Mortality Files (National Center for Health Statistics, CDC). Rates are age-adjusted to the 2000 US Std Population (19 age groups - Census P25-1103). Regression lines are calculated using the Joinpoint Regression Program Version 4.6, February 2018, National Cancer Institute.

Figure 23.5

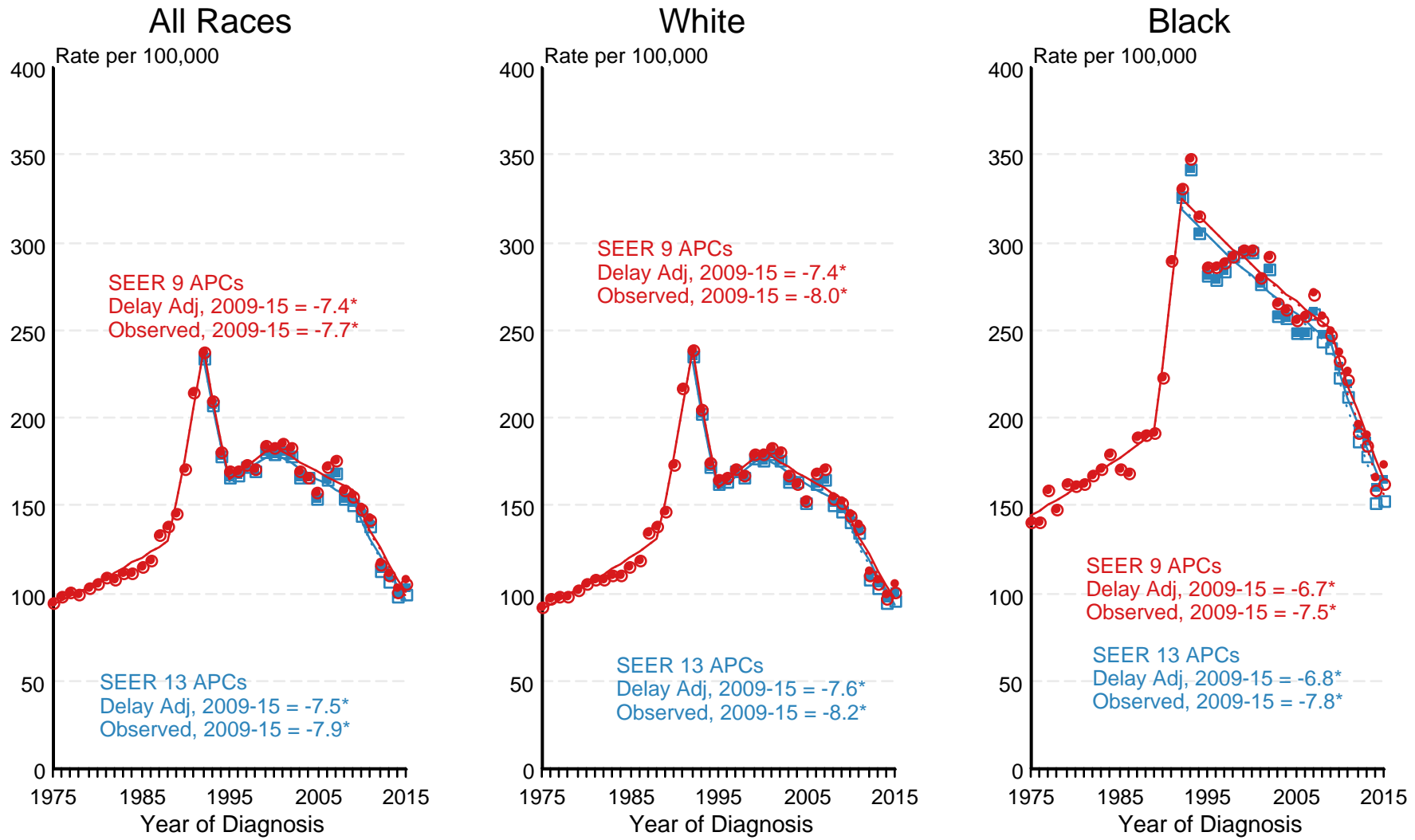
Delay-Adjusted Incidence Rates for Cancer of the Prostate and Cancer of the Lung and Bronchus All Races, Males 1975-2015



Source: SEER 9 areas. Rates are age-adjusted to the 2000 US Std Population (19 age groups - Census P25-1103). Regression lines are calculated using the Joinpoint Regression Program Version 4.6, February 2018, National Cancer Institute.

Figure 23.6

SEER Observed Incidence and SEER Delay Adjusted Incidence Rates^a SEER 9 Areas Compared to SEER 13 Areas Cancer of the Prostate, by Race

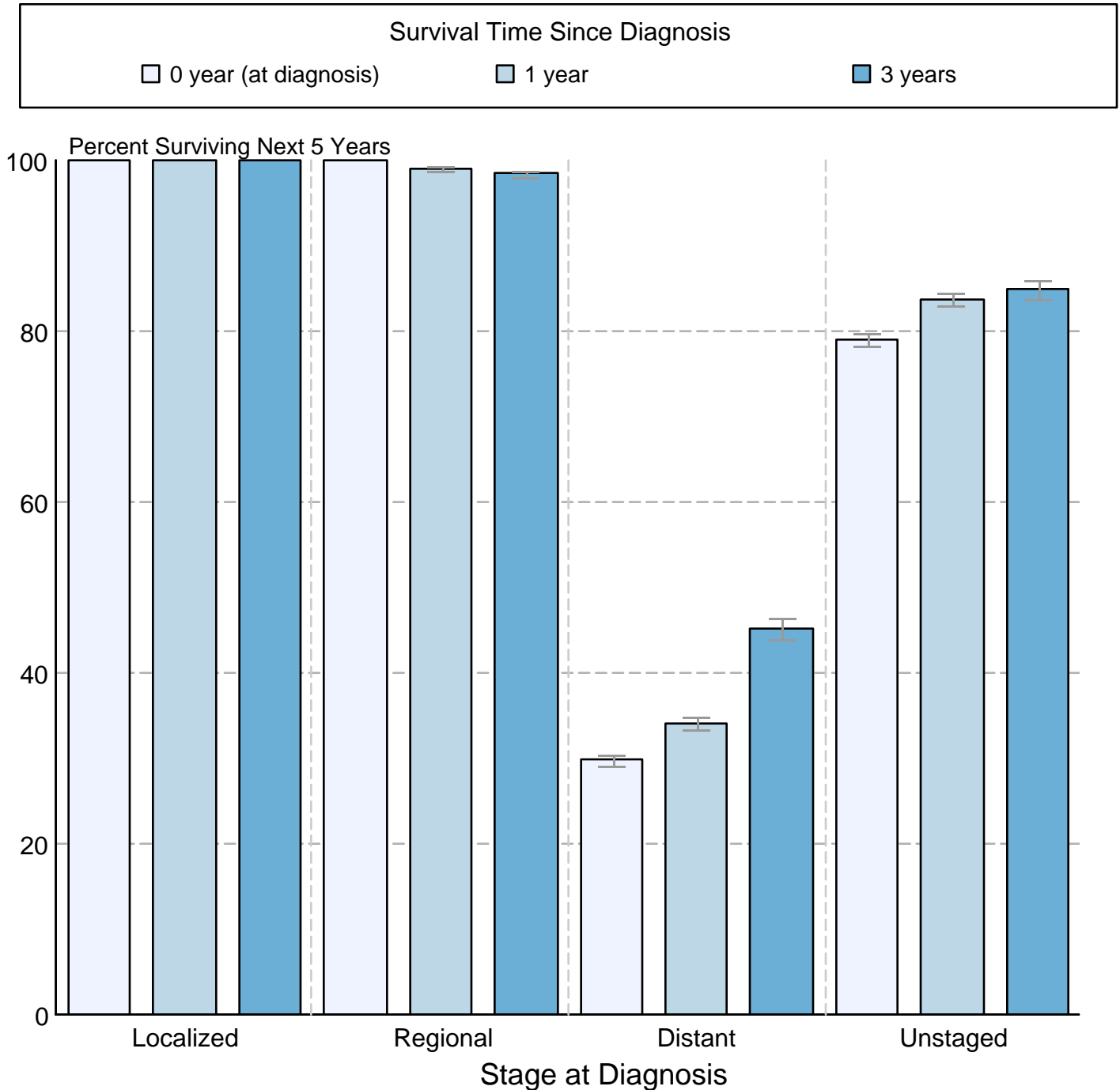


● SEER 9 Delay-Adj. Incidence
 ○ SEER 9 Observed Incidence
 ■ SEER 13 Delay-Adj. Incidence
 □ SEER 13 Observed Incidence

Source: SEER 9 areas and SEER 13 areas.
^a Rates are age-adjusted to the 2000 US Std Population (19 age groups - Census P25-1103).
 Regression lines and APCs are calculated using the Joinpoint Regression Program Version 4.6, February 2018, National Cancer Institute.
 The APC is the Annual Percent Change for the regression line segments. The APC shown on the graph is for the most recent trend.
 * The APC is significantly different from zero (p < 0.05).

Figure 23.7

Cancer of the Prostate 5-Year SEER Conditional Relative Survival and 95% Confidence Intervals Probability of surviving the next 5 years given the cohort has already survived 0, 1, or 3 years 1998-2014 by stage at diagnosis



Source: SEER 18 areas (San Francisco, Connecticut, Detroit, Hawaii, Iowa, New Mexico, Seattle, Utah, Atlanta, San Jose-Monterey, Los Angeles, Alaska Native Registry, Rural Georgia, California excluding SF/SJM/LA, Kentucky, Louisiana, New Jersey and Georgia excluding ATL/RG). California excluding SF/SJM/LA, Kentucky, Louisiana, New Jersey and Georgia excluding ATL/RG contribute cases for diagnosis years 2000 and later. The remaining 13 SEER Areas contribute cases for the entire time period. Percent surviving is not shown if based on less than 25 cases. Confidence intervals are not shown if length of the confidence interval is greater than 5 times the standard error.