

Table 7.1
Cancer of the Corpus and Uterus, NOS (Invasive)

Trends in SEER Incidence^{ab} and U.S. Mortality^c Using the Joinpoint Regression Program,
1975-2017 With up to Five Joinpoints, 2000-2017 With up to Three Joinpoints,
All Ages by Race/Ethnicity

	JP Trend 1		JP Trend 2		JP Trend 3		JP Trend 4		JP Trend 5		JP Trend 6		AAPC ^d	
	Years	APC	Years	APC	Years	APC	Years	APC	Years	APC	Years	APC	2008-17	2013-17
<u>SEER 9 Delay-Adjusted Incidence^a, 1975-2017</u>														
All Races	1975-79	-6.0*	1979-88	-1.7*	1988-97	0.7*	1997-06	-0.4	2006-09	3.2	2009-17	0.6*	0.9*	0.6*
White	1975-79	-6.1*	1979-88	-1.7*	1988-98	0.7*	1998-02	-1.4	2002-17	0.8*			0.8*	0.8*
Black	1975-93	-0.5	1993-17	2.3*									2.3*	2.3*
<u>SEER 21 Delay-Adjusted Incidence^b, 2000-2017</u>														
All Races	2000-03	-0.5	2003-17	1.2*									1.2*	1.2*
White	2000-17	0.9*											0.9*	0.9*
White NH ^{ef}	2000-17	0.8*											0.8*	0.8*
Black	2000-17	2.4*											2.4*	2.4*
Black NH ^{ef}	2000-17	2.4*											2.4*	2.4*
API ^e	2000-17	2.5*											2.5*	2.5*
AI/AN ^{eg}	2000-17	1.4*											1.4*	1.4*
Hispanic ^f	2000-17	2.2*											2.2*	2.2*
<u>U.S. Cancer Mortality^c, 1975-2017</u>														
All Races	1975-93	-1.5*	1993-08	0.2	2008-17	2.1*							2.1*	2.1*
White	1975-92	-1.6*	1992-08	0.0	2008-17	2.0*							2.0*	2.0*
Black	1975-97	-0.8*	1997-08	0.7*	2008-17	2.2*							2.2*	2.2*
<u>U.S. Cancer Mortality^c, 2000-2017</u>														
All Races	2000-08	0.2	2008-17	2.1*									2.1*	2.1*
White	2000-09	0.3	2009-17	2.1*									1.9*	2.1*
White NH ^{ef}	2000-09	0.3	2009-17	1.9*									1.7*	1.9*
Black	2000-08	0.4	2008-17	2.3*									2.3*	2.3*
Black NH ^{ef}	2000-08	0.5	2008-17	2.4*									2.4*	2.4*
API ^e	2000-17	2.5*											2.5*	2.5*
AI/AN ^{eg}	2000-17	0.7											0.7	0.7
Hispanic ^f	2000-07	-0.2	2007-17	3.0*									3.0*	3.0*

Joinpoint Regression Program Version 4.8, April 2020, National Cancer Institute. (<https://surveillance.cancer.gov/joinpoint/>).

The APC is the Annual Percent Change based on rates age-adjusted to the 2000 US Std Population (19 age groups - Census P25-1130).

^a Trends are from the SEER 9 areas (San Francisco, Connecticut, Detroit, Hawaii, Iowa, New Mexico, Seattle, Utah, and Atlanta).

^b Trends are from the SEER 21 areas (SEER 9 areas, Los Angeles, Alaska Native Registry, Rural Georgia, California excluding SF/SJM/LA, Kentucky, Louisiana, New Jersey, Georgia excluding ATL/RG, Idaho, New York and Massachusetts).

^c Trends are from US Mortality Files, National Center for Health Statistics, Centers for Disease Control and Prevention.

^d The AAPC is the Average Annual Percent Change and is based on the APCs calculated by Joinpoint.

^e API - Asian/Pacific Islander, AI/AN - American Indian/Alaska Native, NH - Non-Hispanic

^f Hispanic and Non-Hispanic are not mutually exclusive from whites, blacks, Asian/Pacific Islanders, and American Indians/Alaska Natives. Incidence data for Hispanics and Non-Hispanics are based on NHIA and exclude cases from the Alaska Native Registry.

^g Data for American Indian/Alaska Native are based on the Purchased/Referred Care Delivery Area (PRCDA) counties.

* The APC/AAPC is significantly different from zero (p<.05).

- Joinpoint regression line analysis could not be performed on data series.

Table 7.2
Cancer of the Corpus and Uterus, NOS (Invasive)

Trends in SEER Incidence^{ab} and U.S. Mortality^c Using the Joinpoint Regression Program,
1975-2017 With up to Five Joinpoints, 2000-2017 With up to Three Joinpoints,
Ages <50 by Race/Ethnicity

	JP Trend 1		JP Trend 2		JP Trend 3		JP Trend 4		JP Trend 5		JP Trend 6		AAPC ^d	
	Years	APC	Years	APC	Years	APC	Years	APC	Years	APC	Years	APC	2008-17	2013-17
<u>SEER 9 Delay-Adjusted Incidence^a, 1975-2017</u>														
All Races	1975-88	-2.6*	1988-17	1.3*									1.3*	1.3*
White	1975-89	-2.4*	1989-17	1.1*									1.1*	1.1*
Black	1975-84	-5.5*	1984-17	2.1*									2.1*	2.1*
<u>SEER 21 Delay-Adjusted Incidence^b, 2000-2017</u>														
All Races	2000-17	1.6*											1.6*	1.6*
White	2000-17	1.5*											1.5*	1.5*
White NH ^{ef}	2000-17	1.1*											1.1*	1.1*
Black	2000-17	2.4*											2.4*	2.4*
Black NH ^{ef}	2000-17	2.5*											2.5*	2.5*
API ^e	2000-17	1.7*											1.7*	1.7*
AI/AN ^{eg}	2000-17	0.7											0.7	0.7
Hispanic ^f	2000-17	2.6*											2.6*	2.6*
<u>U.S. Cancer Mortality^c, 1975-2017</u>														
All Races	1975-84	-4.7*	1984-96	-1.2	1996-17	2.2*							2.2*	2.2*
White	1975-92	-3.0*	1992-17	1.9*									1.9*	1.9*
Black	1975-95	-4.5*	1995-17	2.6*									2.6*	2.6*
<u>U.S. Cancer Mortality^c, 2000-2017</u>														
All Races	2000-17	2.3*											2.3*	2.3*
White	2000-17	2.2*											2.2*	2.2*
White NH ^{ef}	2000-17	1.7*											1.7*	1.7*
Black	2000-17	2.5*											2.5*	2.5*
Black NH ^{ef}	2000-17	2.9*											2.9*	2.9*
API ^e	2000-17	2.0											2.0	2.0
AI/AN ^{eg}	-	-											-	-
Hispanic ^f	2000-17	2.8*											2.8*	2.8*

Joinpoint Regression Program Version 4.8, April 2020, National Cancer Institute. (<https://surveillance.cancer.gov/joinpoint/>).

The APC is the Annual Percent Change based on rates age-adjusted to the 2000 US Std Population (19 age groups - Census P25-1130).

^a Trends are from the SEER 9 areas (San Francisco, Connecticut, Detroit, Hawaii, Iowa, New Mexico, Seattle, Utah, and Atlanta).

^b Trends are from the SEER 21 areas (SEER 9 areas, Los Angeles, Alaska Native Registry, Rural Georgia, California excluding SF/SJM/LA, Kentucky, Louisiana, New Jersey, Georgia excluding ATL/RG, Idaho, New York and Massachusetts).

^c Trends are from US Mortality Files, National Center for Health Statistics, Centers for Disease Control and Prevention.

^d The AAPC is the Average Annual Percent Change and is based on the APCs calculated by Joinpoint.

^e API - Asian/Pacific Islander, AI/AN - American Indian/Alaska Native, NH - Non-Hispanic

^f Hispanic and Non-Hispanic are not mutually exclusive from whites, blacks, Asian/Pacific Islanders, and American Indians/Alaska Natives. Incidence data for Hispanics and Non-Hispanics are based on NHIA and exclude cases from the Alaska Native Registry.

^g Data for American Indian/Alaska Native are based on the Purchased/Referred Care Delivery Area (PRCDA) counties.

* The APC/AAPC is significantly different from zero (p<.05).

- Joinpoint regression line analysis could not be performed on data series.

Table 7.3
Cancer of the Corpus and Uterus, NOS (Invasive)

Trends in SEER Incidence^{ab} and U.S. Mortality^c Using the Joinpoint Regression Program,
1975-2017 With up to Five Joinpoints, 2000-2017 With up to Three Joinpoints,
Ages 50+ by Race/Ethnicity

	JP Trend 1		JP Trend 2		JP Trend 3		JP Trend 4		JP Trend 5		JP Trend 6		AAPC ^d	
	Years	APC	Years	APC	Years	APC	Years	APC	Years	APC	Years	APC	2008-17	2013-17
<u>SEER 9 Delay-Adjusted Incidence^a, 1975-2017</u>														
All Races	1975-79	-6.2*	1979-88	-1.7*	1988-97	0.6*	1997-06	-0.7*	2006-09	3.3	2009-17	0.5*	0.8*	0.5*
White	1975-79	-6.2*	1979-88	-1.7*	1988-98	0.7*	1998-03	-1.4	2003-17	0.7*			0.7*	0.7*
Black	1975-97	0.0	1997-17	2.6*									2.6*	2.6*
<u>SEER 21 Delay-Adjusted Incidence^b, 2000-2017</u>														
All Races	2000-04	-0.2	2004-17	1.2*									1.2*	1.2*
White	2000-04	-0.4	2004-17	1.0*									1.0*	1.0*
White NH ^{ef}	2000-17	0.7*											0.7*	0.7*
Black	2000-17	2.4*											2.4*	2.4*
Black NH ^{ef}	2000-17	2.4*											2.4*	2.4*
API ^e	2000-17	2.7*											2.7*	2.7*
AI/AN ^{eg}	2000-17	1.4											1.4	1.4
Hispanic ^f	2000-17	2.1*											2.1*	2.1*
<u>U.S. Cancer Mortality^c, 1975-2017</u>														
All Races	1975-93	-1.4*	1993-08	0.1	2008-17	2.0*							2.0*	2.0*
White	1975-92	-1.6*	1992-08	-0.1	2008-17	1.9*							1.9*	1.9*
Black	1975-04	-0.4*	2004-17	1.9*									1.9*	1.9*
<u>U.S. Cancer Mortality^c, 2000-2017</u>														
All Races	2000-08	0.1	2008-17	2.0*									2.0*	2.0*
White	2000-09	0.2	2009-17	2.0*									1.8*	2.0*
White NH ^{ef}	2000-09	0.2	2009-17	1.9*									1.7*	1.9*
Black	2000-08	0.4	2008-17	2.2*									2.2*	2.2*
Black NH ^{ef}	2000-08	0.4	2008-17	2.3*									2.3*	2.3*
API ^e	2000-17	2.6*											2.6*	2.6*
AI/AN ^{eg}	2000-17	-0.1											-0.1	-0.1
Hispanic ^f	2000-07	-0.5	2007-17	3.0*									3.0*	3.0*

Joinpoint Regression Program Version 4.8, April 2020, National Cancer Institute. (<https://surveillance.cancer.gov/joinpoint/>).

The APC is the Annual Percent Change based on rates age-adjusted to the 2000 US Std Population (19 age groups - Census P25-1130).

^a Trends are from the SEER 9 areas (San Francisco, Connecticut, Detroit, Hawaii, Iowa, New Mexico, Seattle, Utah, and Atlanta).

^b Trends are from the SEER 21 areas (SEER 9 areas, Los Angeles, Alaska Native Registry, Rural Georgia, California excluding SF/SJM/LA, Kentucky, Louisiana, New Jersey, Georgia excluding ATL/RG, Idaho, New York and Massachusetts).

^c Trends are from US Mortality Files, National Center for Health Statistics, Centers for Disease Control and Prevention.

^d The AAPC is the Average Annual Percent Change and is based on the APCs calculated by Joinpoint.

^e API - Asian/Pacific Islander, AI/AN - American Indian/Alaska Native, NH - Non-Hispanic

^f Hispanic and Non-Hispanic are not mutually exclusive from whites, blacks, Asian/Pacific Islanders, and American Indians/Alaska Natives. Incidence data for Hispanics and Non-Hispanics are based on NHIA and exclude cases from the Alaska Native Registry.

^g Data for American Indian/Alaska Native are based on the Purchased/Referred Care Delivery Area (PRCDA) counties.

* The APC/AAPC is significantly different from zero (p<.05).

- Joinpoint regression line analysis could not be performed on data series.

Table 7.4
Cancer of the Corpus and Uterus, NOS (Invasive)

Delay-adjusted SEER Incidence^a Rates by Year, Race and Age

Year of Diagnosis:	All Races, Females			White Females			Black Females		
	All	<50	50+	All	<50	50+	All	<50	50+
1975-1979	31.86	5.98	99.62	33.54	6.15	105.26	18.71	3.72	57.95
1980	27.32	4.99	85.81	28.57	4.97	90.37	16.22	2.51	52.13
1981	27.27	5.60	83.99	28.37	5.45	88.36	17.41	2.86	55.52
1982	26.78	5.04	83.71	28.19	5.19	88.41	17.09	2.49	55.33
1983	26.51	4.86	83.21	27.78	4.92	87.66	18.83	3.39	59.25
1984	25.69	4.62	80.87	27.14	4.84	85.52	17.38	1.74	58.35
1985	25.23	4.63	79.19	26.57	4.83	83.48	17.41	2.23	57.17
1986	24.38	4.81	75.64	25.59	4.96	79.62	16.78	2.54	54.09
1987	24.71	5.00	76.32	26.11	5.28	80.65	15.76	2.02	51.73
1988	23.58	4.56	73.38	24.62	4.49	77.34	16.97	2.97	53.65
1989	24.43	4.48	76.68	25.52	4.77	79.85	19.36	1.78	65.40
1990	25.03	4.59	78.57	26.55	4.82	83.43	17.03	2.28	55.65
1991	24.63	4.37	77.70	25.98	4.46	82.33	17.48	3.12	55.09
1992	24.78	4.86	76.95	26.17	4.85	82.00	17.01	3.01	53.68
1993	24.30	5.19	74.32	25.68	5.14	79.47	17.07	3.48	52.64
1994	25.11	5.02	77.72	26.34	5.06	82.08	17.65	2.42	57.53
1995	25.34	4.74	79.27	26.51	4.67	83.70	18.82	2.75	60.90
1996	24.94	4.53	78.39	26.00	4.39	82.58	19.49	3.17	62.21
1997	25.88	5.04	80.46	27.35	5.04	85.78	16.71	2.54	53.82
1998	25.74	4.84	80.45	27.01	4.76	85.28	19.61	3.15	62.71
1999	25.34	5.22	78.03	26.79	5.10	83.59	17.88	2.97	56.94
2000	24.81	5.23	76.11	26.23	5.34	80.93	18.12	3.00	57.70
2001	25.29	5.11	78.14	26.69	4.95	83.62	19.44	4.07	59.70
2002	24.95	5.07	77.02	25.31	4.60	79.54	23.48	4.87	72.20
2003	24.38	5.32	74.27	25.61	5.31	78.79	20.43	3.76	64.07
2004	25.12	5.57	76.32	26.07	5.29	80.50	20.79	3.85	65.18
2005	25.00	5.54	75.96	25.82	5.38	79.32	23.43	4.12	73.99
2006	24.61	5.14	75.59	26.10	5.05	81.20	19.36	3.70	60.37
2007	25.32	5.89	76.20	26.13	5.89	79.13	22.69	3.59	72.70
2008	26.15	6.02	78.88	26.76	5.81	81.63	24.17	4.16	76.59
2009	27.42	6.03	83.43	28.05	5.92	86.00	25.38	3.71	82.12
2010	27.49	6.27	83.06	28.16	6.06	86.05	24.92	3.97	79.78
2011	27.21	5.59	83.80	27.43	5.39	85.15	28.57	4.00	92.88
2012	27.59	6.21	83.59	28.37	5.99	86.98	25.72	4.52	81.24
2013	27.07	6.00	82.26	27.09	5.43	83.82	27.89	4.95	87.96
2014	27.82	6.35	84.02	28.69	6.23	87.51	26.49	3.90	85.64
2015	27.72	6.59	83.04	28.01	6.42	84.53	27.86	5.28	86.96
2016	28.24	6.19	85.99	28.46	6.09	87.04	28.35	3.90	92.39
2017	28.76	6.61	86.77	28.77	6.30	87.61	28.15	4.13	91.05

Reference: [Cancer Incidence Rates Adjusted for Reporting Delay](#).

Individual rates for diagnosis years 1975-1979 available in web browser version of [Cancer Statistics Review](#).

^a SEER 9 areas (San Francisco, Connecticut, Detroit, Hawaii, Iowa, New Mexico, Seattle, Utah, and Atlanta).

Rates are per 100,000 and are age-adjusted to the 2000 US Std Population (19 age groups - Census P25-1130).

- Delay-adjusted rate is not shown for observed rates based on less than 16 cases for the time interval.

Table 7.5
Cancer of the Corpus and Uterus, NOS (Invasive)

Age-adjusted SEER Incidence^a Rates by Year, Race and Age

	All Races, Females			White Females			Black Females		
	All	<50	50+	All	<50	50+	All	<50	50+
Year of Diagnosis:									
1975-2017	26.57	5.38	82.06	27.62	5.30	86.07	21.58	3.50	68.93
1975-1979	31.86	5.98	99.62	33.54	6.15	105.26	18.71	3.72	57.95
1980	27.32	4.99	85.81	28.57	4.97	90.37	16.22	-	52.13
1981	27.27	5.60	83.99	28.37	5.45	88.36	17.41	2.86	55.52
1982	26.78	5.04	83.71	28.19	5.19	88.41	17.09	2.49	55.33
1983	26.51	4.86	83.21	27.78	4.92	87.66	18.83	3.39	59.25
1984	25.69	4.62	80.87	27.14	4.84	85.52	17.38	-	58.35
1985	25.23	4.63	79.19	26.57	4.83	83.48	17.41	2.23	57.17
1986	24.38	4.81	75.64	25.59	4.96	79.62	16.78	2.54	54.09
1987	24.71	5.00	76.32	26.11	5.28	80.65	15.76	-	51.73
1988	23.58	4.56	73.38	24.62	4.49	77.34	16.97	2.97	53.65
1989	24.43	4.48	76.68	25.52	4.77	79.85	19.36	1.78	65.40
1990	25.03	4.59	78.57	26.55	4.82	83.43	17.03	2.28	55.65
1991	24.63	4.37	77.70	25.98	4.46	82.33	17.48	3.12	55.09
1992	24.78	4.86	76.95	26.17	4.85	82.00	17.01	3.01	53.68
1993	24.30	5.19	74.32	25.68	5.14	79.47	17.07	3.48	52.64
1994	25.11	5.02	77.72	26.34	5.06	82.08	17.65	2.42	57.53
1995	25.34	4.74	79.27	26.51	4.67	83.70	18.82	2.75	60.90
1996	24.94	4.53	78.39	26.00	4.39	82.58	19.49	3.17	62.21
1997	25.88	5.04	80.46	27.35	5.04	85.78	16.71	2.54	53.82
1998	25.74	4.84	80.45	27.01	4.76	85.28	19.61	3.15	62.71
1999	25.34	5.22	78.03	26.79	5.10	83.59	17.88	2.97	56.94
2000	24.81	5.23	76.11	26.23	5.34	80.93	18.12	3.00	57.70
2001	25.29	5.11	78.14	26.69	4.95	83.62	19.44	4.07	59.70
2002	24.95	5.07	77.02	25.31	4.60	79.54	23.48	4.87	72.20
2003	24.38	5.32	74.27	25.61	5.31	78.79	20.43	3.76	64.07
2004	25.12	5.57	76.32	26.07	5.29	80.50	20.79	3.85	65.18
2005	25.00	5.54	75.96	25.82	5.38	79.32	23.43	4.12	73.99
2006	24.61	5.14	75.59	26.10	5.05	81.20	19.36	3.70	60.37
2007	25.32	5.89	76.20	26.13	5.89	79.13	22.69	3.59	72.70
2008	26.15	6.02	78.88	26.76	5.81	81.63	24.17	4.16	76.59
2009	27.41	6.03	83.40	28.03	5.91	85.95	25.33	3.71	81.96
2010	27.47	6.26	82.99	28.13	6.05	85.95	24.83	3.96	79.49
2011	27.17	5.58	83.70	27.38	5.38	85.00	28.42	3.99	92.39
2012	27.54	6.19	83.45	28.30	5.98	86.77	25.55	4.49	80.70
2013	27.01	5.98	82.09	27.01	5.41	83.56	27.65	4.91	87.18
2014	27.74	6.33	83.82	28.59	6.21	87.19	26.22	3.86	84.77
2015	27.63	6.56	82.80	27.88	6.39	84.14	27.55	5.23	85.99
2016	28.13	6.16	85.66	28.28	6.05	86.48	27.99	3.85	91.20
2017	28.56	6.56	86.16	28.44	6.24	86.59	27.67	4.07	89.47

Individual rates for diagnosis years 1975-1979 available in web browser version of [Cancer Statistics Review](#).

^a SEER 9 areas (San Francisco, Connecticut, Detroit, Hawaii, Iowa, New Mexico, Seattle, Utah, and Atlanta).
Rates are per 100,000 and are age-adjusted to the 2000 US Std Population (19 age groups - Census P25-1130).
- Statistic not shown. Rate based on less than 16 cases for the time interval.

Table 7.6
Cancer of the Corpus and Uterus, NOS (Invasive)
Age-adjusted U.S. Death^a Rates by Year, Race and Age

Year of Death:	All Races, Females			White Females			Black Females		
	All	<50	50+	All	<50	50+	All	<50	50+
1975-2017	4.48	0.38	15.22	4.21	0.36	14.28	7.58	0.52	26.09
1975-1979	5.18	0.50	17.44	4.93	0.46	16.66	8.06	0.84	26.97
1980	5.12	0.44	17.38	4.84	0.39	16.50	8.39	0.85	28.12
1981	4.88	0.41	16.60	4.68	0.38	15.91	7.34	0.56	25.11
1982	4.85	0.41	16.49	4.61	0.40	15.65	7.61	0.43	26.40
1983	4.80	0.36	16.43	4.59	0.32	15.78	7.29	0.60	24.82
1984	4.68	0.36	15.99	4.42	0.31	15.17	7.70	0.69	26.07
1985	4.61	0.36	15.74	4.39	0.34	14.99	7.37	0.51	25.33
1986	4.44	0.35	15.17	4.20	0.33	14.36	7.27	0.56	24.85
1987	4.42	0.34	15.10	4.18	0.32	14.28	7.32	0.52	25.12
1988	4.35	0.31	14.90	4.09	0.30	14.01	7.40	0.46	25.57
1989	4.26	0.35	14.52	4.01	0.33	13.63	7.25	0.48	24.99
1990	4.34	0.33	14.85	4.08	0.32	13.94	7.36	0.42	25.56
1991	4.18	0.33	14.24	3.90	0.31	13.30	7.29	0.49	25.08
1992	4.21	0.32	14.40	3.97	0.29	13.59	6.98	0.44	24.11
1993	4.17	0.32	14.26	3.91	0.30	13.35	7.28	0.44	25.17
1994	4.15	0.28	14.29	3.91	0.28	13.41	7.06	0.34	24.67
1995	4.15	0.34	14.12	3.97	0.34	13.47	6.46	0.35	22.47
1996	4.13	0.31	14.14	3.86	0.30	13.18	7.18	0.37	25.03
1997	4.00	0.31	13.67	3.78	0.31	12.85	6.74	0.30	23.62
1998	4.10	0.32	14.00	3.86	0.29	13.19	6.85	0.45	23.60
1999	4.08	0.35	13.87	3.86	0.34	13.10	6.84	0.39	23.71
2000	4.11	0.35	13.95	3.84	0.34	12.99	7.23	0.40	25.11
2001	4.18	0.36	14.18	3.94	0.34	13.38	6.97	0.48	23.97
2002	4.17	0.34	14.19	3.88	0.33	13.17	7.32	0.40	25.46
2003	4.14	0.34	14.10	3.89	0.31	13.27	7.05	0.49	24.23
2004	4.14	0.38	13.99	3.89	0.37	13.09	6.96	0.45	24.01
2005	4.12	0.36	13.98	3.85	0.34	13.05	7.15	0.49	24.58
2006	4.23	0.37	14.34	3.95	0.36	13.35	7.34	0.45	25.39
2007	4.20	0.39	14.17	3.90	0.37	13.15	7.50	0.51	25.82
2008	4.21	0.38	14.25	3.96	0.37	13.35	7.09	0.51	24.33
2009	4.17	0.38	14.11	3.89	0.39	13.04	7.42	0.42	25.74
2010	4.45	0.40	15.06	4.16	0.38	14.06	7.53	0.50	25.93
2011	4.48	0.43	15.10	4.15	0.41	13.94	8.00	0.55	27.51
2012	4.52	0.40	15.30	4.14	0.38	14.01	8.15	0.53	28.12
2013	4.65	0.48	15.55	4.31	0.46	14.37	8.31	0.61	28.46
2014	4.73	0.42	16.01	4.36	0.39	14.74	8.57	0.61	29.41
2015	4.80	0.44	16.22	4.43	0.40	14.98	8.51	0.69	28.99
2016	5.01	0.51	16.78	4.63	0.50	15.43	8.72	0.58	30.04
2017	5.02	0.50	16.85	4.63	0.47	15.51	8.79	0.61	30.22

^a Individual rates for years of death 1975-1979 available in web browser version of [Cancer Statistics Review](#).
US Mortality Files, National Center for Health Statistics, Centers for Disease Control and Prevention.
Rates are per 100,000 and are age-adjusted to the 2000 US Std Population (19 age groups - Census P25-1130).
- Statistic not shown. Rate based on less than 16 cases for the time interval.

Table 7.7
Cancer of the Corpus and Uterus, NOS (Invasive)

SEER Incidence^a and U.S. Death^b Rates, Age-Adjusted and Age-Specific Rates, by Race

	SEER Incidence ^a			U.S. Mortality ^b		
	All Races Females	White Females	Black Females	All Races Females	White Females	Black Females
<u>Age-Adjusted Rates, 2013-2017</u>						
Age at Diagnosis/Death:						
All ages	27.8	28.3	27.9	4.8	4.5	8.6
Under 65	17.9	18.2	15.4	1.8	1.6	3.0
65 and over	96.9	98.5	114.4	25.9	24.0	47.2
All ages (WHO world std) ^c	22.5	22.9	22.3	3.1	2.8	5.6
<u>Age-Specific Rates, 2013-2017</u>						
Age at Diagnosis/Death:						
<1	-	-	-	-	-	-
1-4	-	-	-	-	-	-
5-9	-	-	-	-	-	-
10-14	-	-	-	-	-	-
15-19	0.1	0.1	-	-	-	-
20-24	0.5	0.5	0.6	-	-	-
25-29	1.9	1.7	1.7	0.1	0.1	-
30-34	5.1	5.0	4.8	0.3	0.3	0.3
35-39	9.8	9.9	7.4	0.6	0.6	0.8
40-44	16.5	16.9	11.8	1.2	1.1	1.6
45-49	26.5	26.9	18.4	2.3	2.2	3.0
50-54	49.5	51.1	33.6	4.4	4.1	6.0
55-59	80.2	82.2	70.4	8.1	7.4	13.4
60-64	103.9	104.9	117.4	14.5	12.7	29.7
65-69	117.4	118.9	142.1	20.7	18.2	44.0
70-74	110.6	112.1	131.5	24.5	22.4	47.9
75-79	93.0	95.3	107.5	27.7	25.6	51.9
80-84	77.3	79.3	88.4	29.8	28.5	48.9
85+	52.5	53.7	59.6	32.6	32.4	42.5

^a SEER 21 areas. Rates are per 100,000 and are age-adjusted to the 2000 US Std Population (19 age groups - Census P25-1130), unless noted.

^b US Mortality Files, National Center for Health Statistics, Centers for Disease Control and Prevention.

^c Rates are per 100,000 and are age-adjusted to the 2000 US Std Population (19 age groups - Census P25-1130), unless noted.

- Rates are per 100,000 and are age-adjusted to the world (WHO 2000-2025) standard million.

- Statistic not shown. Rate based on less than 16 cases for the time interval.

Table 7.8
Cancer of the Corpus and Uterus, NOS (Invasive)

5-Year Relative and Period Survival (Percent) by Race, Diagnosis Year, Stage and Age

	All Races, Females			White Females			Black Females		
	All	<50	50+	All	<50	50+	All	<50	50+
5-Year Relative Survival (Percent)									
Year of Diagnosis:									
1960-1963 ^a	-	-	-	73	-	-	31	-	-
1970-1973 ^a	-	-	-	81	-	-	44	-	-
1975-1977 ^b	86.9	92.7	86.2	88.0	93.3	87.4	60.3	84.4 ^g	55.8
1978-1980 ^b	82.5	91.7	81.3	83.7	93.1	82.6	54.9	82.3 ^g	49.5
1981-1983 ^b	80.7	91.2	79.4	82.2	92.3	81.1	50.7	82.8 ^g	45.6
1984-1986 ^b	82.5	93.6	81.0	84.0	93.9	82.8	56.2	83.5 ^g	52.7
1987-1989 ^b	82.2	89.8	81.1	83.9	90.9	82.9	56.7	82.8 ^g	52.9
1990-1992 ^b	83.6	90.1	82.6	85.8	92.2	84.9	54.0	72.9 ^g	50.2
1993-1995 ^b	83.2	90.0	82.0	84.9	91.5	83.8	58.6	81.7	54.0
1996-1998 ^b	83.5	90.1	82.4	85.2	91.3	84.2	61.7	82.2	57.3
1999-2001 ^b	84.2	88.8	83.3	85.9	89.9	85.2	61.4	71.2	58.9
2002-2004 ^b	83.0	90.1	81.5	85.3	92.5	84.0	60.4	78.0	55.9
2005-2009 ^b	83.6	88.3	82.7	85.7	89.8	85.1	65.8	76.4	63.8
2010-2016 ^b	82.9 ^f	89.2 ^f	82.0 ^f	85.5 ^f	90.4 ^f	84.9 ^f	64.8 ^f	82.2	62.1 ^f
5-Year Period Survival (Percent) ^{cd}									
2016	81.3	88.6	80.1	83.5	89.4	82.7	63.9	80.3	61.5
Stage Distribution (%) 2010-2016 ^{ce}									
All Stages									
Number of cases	82,453	11,188	71,265	65,045	8,149	56,896	8,948	1,105	7,843
Percent	100%	100%	100%	100%	100%	100%	100%	100%	100%
Localized	67	71	67	69	73	68	54	62	53
Regional	20	17	21	20	17	20	24	19	25
Distant	9	8	9	8	7	8	17	14	17
Unstaged/Unknown	3	4	3	3	4	3	5	5	5
5-Year Relative Survival (Percent), 2010-2016 ^c									
Age at Diagnosis:									
Ages <45	89.6	-	-	90.5	-	-	81.6	-	-
Ages 45-54	86.3	-	-	87.7	-	-	72.0	-	-
Ages 55-64	83.9	-	-	86.6	-	-	65.6	-	-
Ages 65-74	78.5	-	-	81.7	-	-	57.2	-	-
Ages 75+	67.6	-	-	70.4	-	-	44.8	-	-
Ages <65	85.3	-	-	87.3	-	-	69.1	-	-
Ages 65+	74.8	-	-	77.9	-	-	53.5	-	-
Stage ^e :									
All Stages	81.2	88.2	80.1	83.5	89.3	82.7	62.7	79.1	60.3
Localized	95.0	96.6	94.7	95.9	96.9	95.7	86.5	92.9	85.4
Regional	69.4	81.5	67.8	72.0	82.7	70.7	49.9	71.7	47.3
Distant	17.3	30.5	15.5	18.8	31.4	17.1	10.4	26.6	8.5
Unstaged/Unknown	53.2	87.3	46.3	52.2	87.8	46.2	44.5	79.8 ^g	38.9

^a Based on End Results data from a series of hospital registries and one population-based registry.

^b SEER 9 areas (San Francisco, Connecticut, Detroit, Hawaii, Iowa, New Mexico, Seattle, Utah, Atlanta).

Based on follow-up of patients into 2017. [Expected survival rates](#) are derived from the U.S. Annual Life Tables.

^c SEER 18 areas (San Francisco, Connecticut, Detroit, Hawaii, Iowa, New Mexico, Seattle, Utah, Atlanta, San Jose-Monterey, Los Angeles, Alaska Native Registry, Rural Georgia, California excluding SF/SJM/LA, Kentucky, Louisiana, New Jersey and Georgia excluding ATL/RG). Expected survival rates are derived from life tables by socio-economic status, geography and race developed by the SEER program.

Based on follow-up of patients into 2017.

^d Period survival provides a 2016 estimate of survival by piecing together the most recent conditional survival estimates from several cohorts. It is computed here using three year calendar blocks (2010-2012: 0-1 year survival), (2009-2011: 1-2 year survival), (2008-2010: 2-3 year survival), (2007-2009: 3-4 year survival), (2006-2008: 4-5 years survival).

^e Stage at diagnosis is classified using SEER Summary Stage 2000. Stage distribution percentages may not sum to 100 due to rounding.

^f The difference between 1975-1977 and 2010-2016 is statistically significant ($p < .05$).

^g The standard error is between 5 and 10 percentage points.

^h The standard error is greater than 10 percentage points.

- Statistic could not be calculated due to fewer than 25 cases during the time period.

Table 7.9
Cancer of the Corpus And Uterus, NOS (Invasive)

SEER^a Relative Survival (Percent)
By Year of Diagnosis

All Races, Females

Year of Diagnosis

	1975- 1979	1980- 1984	1985- 1989	1990- 1994	1995	1996	1997	1998	1999	2000	2001	2002	2003	2004	2005	2006	2007	2008	2009	2010	2011	2012	2013	2014	2015	2016
Survival Time																										
1-year	93.7	91.3	92.2	92.1	92.9	91.5	93.1	93.3	93.9	93.6	92.1	92.0	92.8	92.8	92.8	92.8	93.1	93.3	92.8	93.3	92.2	93.1	92.7	93.2	93.0	92.1
2-year	90.1	86.3	87.5	88.1	88.4	88.0	88.9	89.7	89.5	89.5	88.1	88.2	88.6	88.3	89.0	89.5	89.5	88.8	88.3	89.0	88.0	88.8	87.9	88.4	89.4	
3-year	87.8	83.4	84.9	85.6	86.0	85.7	86.2	86.6	87.2	87.4	85.7	85.6	86.1	85.4	85.8	87.2	87.3	86.1	85.8	87.0	85.5	85.7	85.5	85.5		
4-year	86.3	82.0	83.4	84.1	84.7	84.6	85.2	84.5	85.5	86.0	84.2	83.7	84.6	83.8	84.2	85.6	85.7	84.5	84.5	84.9	83.8	84.2	84.0			
5-year	85.8	80.9	82.3	83.3	84.1	83.2	84.1	83.2	84.3	85.2	83.1	82.8	83.4	82.6	82.9	84.9	83.9	82.9	83.2	83.5	82.6	83.0				
6-year	85.1	80.3	81.7	82.2	83.4	82.1	83.3	82.5	83.7	84.4	82.2	82.4	82.5	81.7	81.9	84.4	83.3	82.0	81.9	82.9	81.4					
7-year	84.7	79.8	81.3	81.9	82.9	81.3	82.6	82.2	82.6	83.9	81.5	81.3	82.0	80.7	81.3	83.8	82.4	81.3	81.3	82.3						
8-year	84.5	79.1	80.8	81.2	82.5	80.4	81.6	81.9	82.0	83.3	80.8	81.0	81.9	80.3	80.9	83.5	81.9	80.8	80.8							
9-year	84.5	78.7	80.5	81.0	81.5	79.7	81.0	81.2	82.0	83.2	80.1	80.3	81.4	79.9	80.4	83.2	81.5	80.4								
10-year	84.3	78.4	80.3	80.5	81.2	79.5	81.0	81.0	81.3	82.9	80.0	80.1	80.3	79.6	79.8	82.5	81.3									
11-year	84.1	78.1	80.0	80.4	81.1	79.5	81.0	81.0	81.2	81.9	79.2	80.1	80.1	79.1	78.9	82.3										
12-year	83.9	77.8	79.6	79.9	80.9	79.5	81.0	80.8	80.9	81.8	78.6	80.0	79.4	78.9	78.8											
13-year	83.9	77.5	79.2	79.6	80.7	79.2	81.0	80.6	80.4	81.5	78.1	80.0	78.8	78.2												
14-year	83.7	77.1	78.9	79.2	80.2	78.9	81.0	79.7	80.0	81.4	78.1	79.6	78.1													
15-year	83.7	76.8	78.6	79.1	79.7	78.4	81.0	79.7	80.0	80.2	78.1	79.4														
16-year	83.4	76.2	78.1	78.8	79.4	77.5	80.8	78.8	79.2	79.8	78.1															
17-year	83.4	75.9	78.0	78.3	79.0	76.5	80.2	78.0	78.9	79.3																
18-year	83.4	75.5	77.8	77.8	78.1	75.7	79.4	78.0	78.4																	
19-year	83.4	74.8	77.7	77.2	77.5	75.4	78.9	77.7																		
20-year	83.4	74.7	77.2	76.5	76.6	74.5	78.9																			

^a Based on the SEER 9 areas (San Francisco, Connecticut, Detroit, Hawaii, Iowa, New Mexico, Seattle, Utah, and Atlanta). [Expected survival rates](#) are derived from the U.S. Annual Life Tables.

Table 7.10
Cancer of the Corpus and Uterus, NOS (Invasive)

Risk of Being Diagnosed With Cancer in 10, 20 and 30 Years,
Lifetime Risk of Being Diagnosed with Cancer Given Alive and Cancer-Free at Current Age, and
Lifetime Risk of Dying from Cancer Given Alive at Current Age
Females, 2015-2017 By Race/Ethnicity

Race/ Ethnicity	Current Age	Risk of Being Diagnosed with Cancer				Risk of Dying from Cancer	Race/ Ethnicity	Current Age	Risk of Being Diagnosed with Cancer				Risk of Dying from Cancer
		+10 yrs	+20 yrs	+30 yrs	Ever				+10 yrs	+20 yrs	+30 yrs	Ever	
All Races	0	0.00	0.00	0.01	3.11	0.64	Asian/ Pacific Islander	0	0.00	0.00	0.01	2.48	0.51
	10	0.00	0.01	0.09	3.14	0.65		10	0.00	0.01	0.10	2.50	0.51
	20	0.01	0.09	0.31	3.15	0.65		20	0.01	0.09	0.35	2.50	0.51
	30	0.08	0.30	0.92	3.15	0.65		30	0.08	0.33	0.93	2.49	0.51
	40	0.23	0.85	1.85	3.10	0.65		40	0.25	0.86	1.56	2.42	0.51
	50	0.64	1.65	2.48	2.93	0.65		50	0.61	1.32	1.85	2.19	0.50
	60	1.06	1.93	2.32	2.41	0.61		60	0.73	1.28	1.54	1.63	0.44
	70	0.95	1.39	-	1.49	0.49		70	0.58	0.85	-	0.95	0.35
80	0.56	-	-	0.68	0.32	80	0.32	-	-	0.42	0.23		
White	0	0.00	0.00	0.01	3.15	0.60	American Indian/ Alaska Native ^a	0	0.00	0.00	0.03	1.96	0.41
	10	0.00	0.01	0.09	3.18	0.60		10	0.00	0.03	0.12	1.98	0.41
	20	0.01	0.09	0.32	3.18	0.60		20	0.03	0.12	0.31	1.98	0.42
	30	0.08	0.31	0.94	3.19	0.61		30	0.10	0.29	0.73	1.98	0.42
	40	0.23	0.87	1.87	3.14	0.61		40	0.19	0.65	1.23	1.92	0.42
	50	0.65	1.67	2.51	2.97	0.60		50	0.47	1.07	1.54	1.78	0.40
	60	1.07	1.95	2.35	2.43	0.57		60	0.64	1.13	1.38	1.39	0.36
	70	0.97	1.41	-	1.50	0.46		70	0.55	0.83	-	0.84	0.28
80	0.57	-	-	0.68	0.31	80	0.36	-	-	0.37	0.26		
Black	0	0.00	0.00	0.01	3.07	1.02	Hispanic ^b	0	0.00	0.00	0.02	2.86	0.61
	10	0.00	0.01	0.08	3.12	1.04		10	0.00	0.02	0.11	2.88	0.62
	20	0.01	0.08	0.23	3.12	1.04		20	0.02	0.11	0.34	2.88	0.62
	30	0.06	0.22	0.73	3.13	1.05		30	0.09	0.33	0.91	2.88	0.62
	40	0.16	0.67	1.77	3.11	1.05		40	0.23	0.82	1.67	2.80	0.62
	50	0.53	1.66	2.57	3.04	1.06		50	0.60	1.46	2.17	2.61	0.60
	60	1.22	2.18	2.59	2.69	1.03		60	0.90	1.63	1.96	2.08	0.56
	70	1.11	1.58	-	1.69	0.79		70	0.79	1.15	-	1.28	0.45
80	0.63	-	-	0.77	0.47	80	0.44	-	-	0.59	0.30		

Devcan 6.7.8, April 2020, National Cancer Institute (<https://surveillance.cancer.gov/devcan/>).

Source: Incidence data are from the SEER 21 areas (San Francisco, Connecticut, Detroit, Hawaii, Iowa, New Mexico, Seattle, Utah, Atlanta, San Jose-Monterey, Los Angeles, Alaska Native Registry, Rural Georgia, California excluding SF/SJM/LA, Kentucky, Louisiana, New Jersey, Georgia excluding ATL/RG, Idaho, New York and Massachusetts). Mortality data are from the NCHS public use data file for the total US.

^a Underlying incidence and mortality data for American Indian/Alaska Native are based on the PRCA (Purchased/Referred Care Delivery Areas) counties.

^b Hispanic is not mutually exclusive from whites, blacks, Asian/Pacific Islanders, and American Indians/Alaska Natives. Underlying incidence data for Hispanics are based on NHIA and exclude cases from the Alaska Native Registry.

- Statistic could not be calculated.

A percent of 0.00 represents a value that is below 0.005.

Table 7.11
Cancer of the Corpus And Uterus, NOS (Invasive)

SEER Incidence and U.S. Mortality
Age-Adjusted Rates and Trends^a
By Race/Ethnicity

SEER Incidence	SEER 21 Areas ^b	SEER 21 Areas ^b	SEER 9 Areas ^b
	Rate 2013-2017	Trend 2008-2017 ^c	Trend 2008-2017 ^d
	Rate per 100,000 persons	AAPC (%)	AAPC (%)
Race/Ethnicity	Females	Females	Females
All Races	27.8	1.0*	0.8*
White	28.3	0.8*	0.7*
White Hispanic ^e	25.0	2.0*	-
White Non-Hispanic ^e	28.7	0.7*	-
Black	27.9	2.3*	2.2*
Asian/Pacific Islander	21.7	2.2*	-
Amer Ind/Alaska Nat ^f	19.9	0.9	-
Hispanic ^e	24.6	2.2*	-
<u>U.S. Mortality^g</u>			
	Rate 2013-2017	Trend 2008-2017 ^h	
	Rate per 100,000 persons	AAPC (%)	
Race/Ethnicity	Females	Females	
All Races	4.8	2.1*	
White	4.5	1.9*	
White Hispanic ^e	4.2	2.8*	
White Non-Hispanic ^e	4.5	1.7*	
Black	8.6	2.3*	
Asian/Pacific Islander	3.2	2.5*	
Amer Ind/Alaska Nat			
Total U.S.	2.5	0.2	
PRCDA Counties	3.4	0.7	
Non-PRCDA Counties	1.5	-0.9	
Hispanic ^e	4.0	3.0*	

The AAPC is the Average Annual Percent Change over the time interval. The AAPCs are calculated by the Joinpoint Regression Program Version 4.8, April 2020, National Cancer Institute.

Statistic not shown. Rate based on less than 16 cases for the time interval.

Trend based on less than 10 cases for at least one year within the time interval.

Rates are age-adjusted to the 2000 US Std Population (19 age groups - Census P25-1130). Trends are based on rates age-adjusted to the 2000 US Std Population (19 age groups - Census P25-1130).

The SEER 9 areas are San Francisco, Connecticut, Detroit, Hawaii, Iowa, New Mexico, Seattle, Utah, and Atlanta.

The SEER 21 areas comprise the SEER 9 areas plus San Jose-Monterey, Los Angeles, the Alaska Native Registry, Rural Georgia, California excluding SF/SJM/LA, Kentucky, Louisiana, New Jersey, Georgia excluding ATL/RG, Idaho, New York and Massachusetts.

The 2008-2017 AAPC estimates are based on a Joinpoint analysis with up to 3 Joinpoints over diagnosis years 2000-2017.

The 2008-2017 AAPC estimates are based on a Joinpoint analysis with up to 5 Joinpoints over diagnosis years 1975-2017.

Hispanic and Non-Hispanic are not mutually exclusive from whites, blacks, Asian/Pacific Islanders, and American Indians/Alaska Natives. Incidence data for Hispanics and Non-Hispanics are based on NHIA and exclude cases from the Alaska Native Registry.

Incidence data for American Indian/Alaska Native are based on the Purchased/Referred Care Delivery Area (PRCDA) counties.

US Mortality Files, National Center for Health Statistics, CDC.

The 2008-2017 mortality AAPCs are based on a Joinpoint analysis using years of death 2000-2017.

The APC is significantly different from zero (p<.05).

Table 7.12
Cancer of the Corpus and Uterus, NOS (Invasive)

Age-Adjusted SEER Incidence Rates^a
By Registry, Race and Age

	All Races			Whites			Blacks		
	All Ages	Ages <50	Ages 50+	All Ages	Ages <50	Ages 50+	All Ages	Ages <50	Ages 50+
<u>SEER Incidence Rates^a, 2013-2017</u>									
California	25.94	6.24	77.54	26.72	6.17	80.53	25.81	4.00	82.94
Greater Bay Area	26.15	5.56	80.07	27.45	5.29	85.48	28.85	3.53	95.16
San Francisco-Oakland	26.97	5.87	82.20	27.98	5.57	86.68	29.21	3.44	96.71
San Jose-Monterey	24.59	4.99	75.92	26.52	4.82	83.34	26.42	-	84.85
Los Angeles	26.65	7.11	77.82	27.78	7.28	81.47	27.28	4.53	86.87
Greater California	25.52	6.05	76.50	26.03	5.90	78.76	22.78	3.75	72.61
Connecticut	29.59	5.68	92.21	29.59	5.64	92.33	27.51	3.93	89.25
Detroit	30.33	6.73	92.10	31.70	7.44	95.25	28.09	5.30	87.78
Georgia	23.77	5.67	71.18	23.62	6.34	68.88	26.34	4.80	82.76
Atlanta	24.45	4.47	76.78	24.39	4.98	75.22	26.76	4.13	86.03
Rural Georgia	32.22	8.75	93.67	31.63	-	86.69	36.38	-	114.79
Greater Georgia	23.51	6.40	68.33	23.36	6.87	66.54	25.78	5.43	79.09
Hawaii	32.55	12.17	85.93	25.29	4.64	79.37	-	-	-
Idaho	25.17	6.26	74.67	25.23	6.44	74.44	-	-	-
Iowa	30.13	6.07	93.14	30.17	6.05	93.33	34.36	-	109.46
Kentucky	27.46	9.22	75.21	27.68	9.47	75.36	26.76	6.90	78.77
Louisiana	20.52	5.56	59.70	19.86	5.92	56.36	22.92	4.87	70.19
Massachusetts	28.95	5.34	90.78	29.24	5.35	91.78	26.09	4.18	83.46
New Jersey	31.94	5.71	100.63	33.13	6.09	103.92	29.93	3.77	98.42
New Mexico	24.11	7.45	67.74	23.28	6.76	66.56	14.49	-	-
New York	32.05	6.61	98.69	32.66	6.79	100.42	32.30	5.17	103.33
Seattle-Puget Sound	26.88	5.94	81.73	27.31	5.60	84.14	26.90	3.84	87.28
Utah	27.01	7.51	78.06	26.67	6.88	78.48	-	-	-
SEER 9 Areas ^b	27.83	6.32	84.17	28.05	6.06	85.65	27.42	4.39	87.73
SEER 13 Areas ^b	27.39	6.43	82.29	27.97	6.31	84.70	27.46	4.42	87.76
SEER 18 Areas ^b	26.79	6.36	80.31	27.31	6.40	82.07	26.40	4.55	83.61
SEER 21 Areas ^b	27.85	6.34	84.18	28.34	6.40	85.79	27.92	4.68	88.76

^a Rates are per 100,000 and are age-adjusted to the 2000 US Std Population (19 age groups - Census P25-1130)

^b The SEER 9 areas are San Francisco, Connecticut, Detroit, Hawaii, Iowa, New Mexico, Seattle, Utah and Atlanta.

The SEER 13 areas comprise the SEER 9 areas plus San Jose-Monterey, Los Angeles, the Alaska Native Registry and Rural Georgia. The SEER 18 areas comprise the SEER 13 areas plus California excluding SF/SJM/LA, Kentucky, Louisiana, New Jersey and Georgia excluding ATL/RG.

The SEER 21 areas comprise the SEER 18 areas plus Idaho, New York and Massachusetts.

- Statistic not shown. Rate based on less than 16 cases for the time interval.

Table 7.13
Cancer of the Corpus and Uterus, NOS (Invasive)

Age-Adjusted SEER Death Rates^a
By Registry, Race and Age

	All Races			Whites			Blacks		
	All Ages	Ages <50	Ages 50+	All Ages	Ages <50	Ages 50+	All Ages	Ages <50	Ages 50+
<u>SEER Death Rates^a, 2013-2017</u>									
California	4.86	0.50	16.26	4.89	0.52	16.31	8.62	0.51	29.87
Greater Bay Area	4.83	0.50	16.18	4.88	0.48	16.38	9.88	-	33.43
San Francisco-Oakland	5.18	0.57	17.25	5.04	0.51	16.91	10.26	-	34.40
San Jose-Monterey	4.14	0.36	14.04	4.59	-	15.45	-	-	-
Los Angeles	5.25	0.56	17.54	5.23	0.60	17.34	9.10	-	31.98
Greater California	4.69	0.48	15.71	4.75	0.49	15.89	7.34	-	25.34
Connecticut	4.31	-	15.13	4.07	-	14.27	7.77	-	27.14
Detroit	5.67	0.60	18.96	4.68	0.53	15.54	9.34	-	31.76
Georgia	4.92	0.47	16.58	3.83	0.40	12.82	8.29	0.62	28.38
Atlanta	5.55	0.46	18.85	3.92	-	13.25	8.88	0.57	30.64
Rural Georgia	5.64	-	19.10	-	-	-	-	-	-
Greater Georgia	4.64	0.48	15.54	3.80	0.41	12.69	7.91	0.70	26.79
Hawaii	4.52	0.93	13.92	4.96	-	16.15	-	-	-
Idaho	4.91	-	16.44	5.00	-	16.68	-	-	-
Iowa	5.16	0.42	17.56	5.10	0.43	17.33	11.56	-	40.88
Kentucky	4.17	0.69	13.27	3.94	0.64	12.58	7.58	-	24.62
Louisiana	4.45	0.51	14.78	3.35	0.38	11.14	7.50	0.81	25.03
Massachusetts	4.63	0.23	16.15	4.61	0.26	16.01	6.74	-	23.89
New Jersey	5.80	0.42	19.91	5.58	0.41	19.11	9.01	0.67	30.83
New Mexico	4.21	0.71	13.36	4.03	-	13.10	-	-	-
New York	5.92	0.43	20.31	5.39	0.40	18.44	9.88	0.57	34.27
Seattle-Puget Sound	4.69	0.39	15.95	4.81	0.40	16.35	6.42	-	22.23
Utah	4.25	0.45	14.22	4.21	-	14.21	-	-	-
SEER 9 Areas ^b	4.90	0.48	16.48	4.56	0.41	15.40	8.90	0.65	30.48
SEER 13 Areas ^b	4.92	0.49	16.52	4.68	0.46	15.75	8.90	0.59	30.68
SEER 18 Areas ^b	4.88	0.49	16.37	4.62	0.47	15.51	8.38	0.64	28.63
SEER 21 Areas ^b	5.05	0.47	17.07	4.76	0.44	16.08	8.72	0.61	29.95
Total U.S.	4.85	0.47	16.30	4.47	0.45	15.02	8.59	0.62	29.45

^a US Mortality Files, National Center for Health Statistics, Centers for Disease Control and Prevention. Rates are per 100,000 and are age-adjusted to the 2000 US Std Population (19 age groups - Census P25-1130).

^b The SEER 9 areas are San Francisco, Connecticut, Detroit, Hawaii, Iowa, New Mexico, Seattle, Utah and Atlanta. The SEER 13 areas comprise the SEER 9 areas plus San Jose-Monterey, Los Angeles, the Alaska Native Registry and Rural Georgia. The SEER 18 areas comprise the SEER 13 areas plus California excluding SF/SJM/LA, Kentucky, Louisiana, New Jersey and Georgia excluding ATL/RG.

The SEER 21 areas comprise the SEER 18 areas plus Idaho, New York and Massachusetts.

- Statistic not shown. Rate based on less than 16 cases for the time interval.

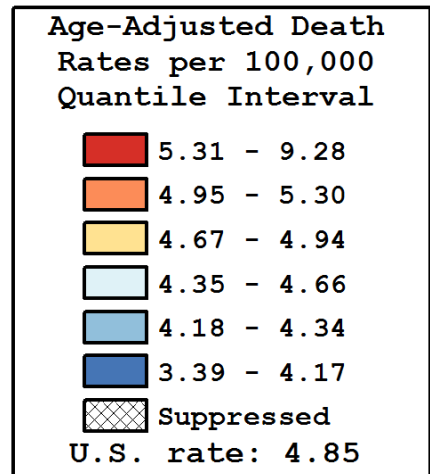
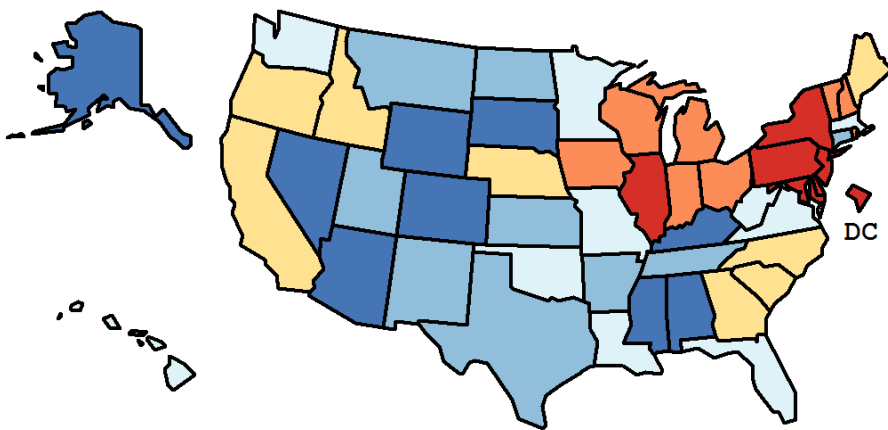
Table 7.14
Cancer of the Corpus and Uterus, NOS (Invasive)

Age-Adjusted Cancer Death^a Rates By State, All Races, 2013-2017

Females

State	Rate	SE	Rank(CI) ^d	PD
TOTAL U.S.	4.85	0.02		
High Five States				
D.C.	9.28	0.71	01(01,01)	91.47 ^c
New York	5.92	0.10	02(02,07)	22.24 ^c
Delaware	5.90	0.42	03(02,26)	21.71 ^c
New Jersey	5.80	0.14	04(02,09)	19.79 ^c
Maryland	5.80	0.18	05(02,11)	19.69 ^c
Low Five States				
Arizona	3.95	0.14	47(34,51)	-18.55 ^c
Colorado	3.95	0.16	48(32,51)	-18.57 ^c
Wyoming	3.90	0.49	49(08,51)	-19.45 ^c
Alabama	3.59	0.15	50(43,51)	-25.89 ^c
Alaska	3.39	0.48	51(19,51)	-29.97 ^c

State	Rate	SE	Rank(CI) ^d	PD	State	Rate	SE	Rank(CI) ^d	PD
Alabama	3.59	0.15	50(43,51)	-25.89 ^c	Montana	4.34	0.36	34(08,51)	-10.51
Alaska	3.39	0.48	51(19,51)	-29.97 ^c	Nebraska	4.69	0.29	23(06,48)	-3.16
Arizona	3.95	0.14	47(34,51)	-18.55 ^c	Nevada	4.15	0.23	44(19,51)	-14.30
Arkansas	4.24	0.21	41(18,50)	-12.52	New Hampshire	5.15	0.34	11(02,41)	6.22
California	4.86	0.07	20(12,27)	0.29	New Jersey	5.80	0.14	04(02,09)	19.79 ^c
Colorado	3.95	0.16	48(32,51)	-18.57 ^c	New Mexico	4.21	0.25	42(15,51)	-13.18
Connecticut	4.31	0.19	37(17,49)	-10.99	New York	5.92	0.10	02(02,07)	22.24 ^c
Delaware	5.90	0.42	03(02,26)	21.71 ^c	North Carolina	4.72	0.12	22(12,37)	-2.58
D.C.	9.28	0.71	01(01,01)	91.47 ^c	North Dakota	4.31	0.45	36(04,51)	-10.96
Florida	4.43	0.08	33(23,42)	-8.53	Ohio	5.16	0.11	09(07,21)	6.51
Georgia	4.92	0.13	17(09,31)	1.60	Oklahoma	4.44	0.19	32(14,48)	-8.29
Hawaii	4.52	0.33	30(07,50)	-6.75	Oregon	4.94	0.20	16(07,36)	1.93
Idaho	4.91	0.32	18(03,47)	1.40	Pennsylvania	5.66	0.11	06(02,10)	16.88 ^c
Illinois	5.54	0.12	07(02,13)	14.41	Rhode Island	4.97	0.37	15(02,47)	2.47
Indiana	5.12	0.16	13(06,27)	5.66	South Carolina	4.79	0.17	21(09,39)	-1.06
Iowa	5.16	0.22	10(03,31)	6.46	South Dakota	4.13	0.39	45(09,51)	-14.84
Kansas	4.32	0.22	35(15,50)	-10.83	Tennessee	4.29	0.14	38(23,48)	-11.55
Kentucky	4.17	0.17	43(23,50)	-13.98	Texas	4.26	0.08	39(29,47)	-12.03
Louisiana	4.45	0.18	31(15,47)	-8.08	Utah	4.25	0.26	40(13,51)	-12.21
Maine	4.86	0.31	19(04,47)	0.39	Vermont	5.11	0.48	14(02,48)	5.39
Maryland	5.80	0.18	05(02,11)	19.69 ^c	Virginia	4.66	0.13	25(12,40)	-3.92
Massachusetts	4.63	0.14	26(13,42)	-4.43	Washington	4.52	0.15	29(16,44)	-6.72
Michigan	5.30	0.13	08(05,18)	9.35	West Virginia	4.66	0.26	24(08,48)	-3.85
Minnesota	4.57	0.17	28(13,45)	-5.75	Wisconsin	5.14	0.17	12(05,26)	6.03
Mississippi	4.12	0.21	46(22,51)	-14.93	Wyoming	3.90	0.49	49(08,51)	-19.45 ^c
Missouri	4.61	0.15	27(13,42)	-4.85					



^a US Mortality Files, National Center for Health Statistics, Centers for Disease Control and Prevention. Rates are per 100,000 and are age-adjusted to the 2000 US Std Population (19 age groups - Census P25-1130).

^b Difference between state rate and total U.S. rate is statistically significant ($p < .0002$).

^c Absolute percent difference between state rate and total U.S. rate is 15% or more.

^d Rank of state level death rate and the 95% confidence intervals (low, high) for the rank.

SE Standard error of the rate.

PD Percent difference between state rate and total U.S. rate.

- Statistic not shown. Rate based on less than 16 cases for the time interval.

Table 7.15
Cancer of the Corpus and Uterus, NOS (Invasive)

Estimated United States Cancer Prevalence Counts^a on January 1, 2017
By Race/Ethnicity and Years Since Diagnosis

Years Since Diagnosis	0 to 5	> 5 to 10	> 10 to 15	> 15 to 20	> 20 to 25	<=25 ^b	> 25 ^d	Complete ^e
<u>Race</u>								
All Races	233,904	168,435	119,459	89,731	57,498	669,026	124,819	793,846
White	196,349	145,978	106,288	81,357	52,694	582,667	105,108	687,775
Black	22,770	12,972	7,262	4,413	2,428	49,846	5,287	55,132
Asian/Pacific Islander	10,432	7,010	4,449	2,905	1,752	26,547	+	+
Hispanic	22,103	13,197	8,530	5,147	3,121	52,097	+	+

Estimated prevalence percent^a on January 1, 2017, of the SEER population diagnosed in the previous 25 years
By Age at Prevalence and Race/Ethnicity

Age at Prevalence	Age Specific (Crude)										Age-Adjusted ^c
	All Ages	0-9	10-19	20-29	30-39	40-49	50-59	60-69	70-79	80+	All Ages
<u>Race</u>											
All Races	0.4067	0.0000	0.0001	0.0038	0.0354	0.1445	0.4503	1.1561	1.6950	1.5347	0.3121
White	0.4565	-	0.0001	0.0036	0.0354	0.1485	0.4705	1.2151	1.7930	1.6386	0.3281
Black	0.2104	0.0002	-	0.0045	0.0288	0.0961	0.2669	0.8127	1.1765	0.9022	0.2085
Asian/Pacific Islander	0.2445	-	-	0.0043	0.0365	0.1592	0.4960	0.9042	0.9397	0.7160	0.2300
Hispanic	0.1811	-	-	0.0059	0.0520	0.1674	0.4125	0.8725	1.1305	0.8464	0.2394

^a US 2017 cancer prevalence counts are based on 2017 cancer prevalence proportions from the SEER 13 Areas (excluding the Alaska Native Registry) and 1/1/2017 US population estimates based on the average of 2016 and 2017 population estimates from the US Bureau of the Census.

^b Prevalence was calculated using the first invasive tumor for each cancer site diagnosed during the previous 25 years. Maximum limited-duration prevalence is 25 years for 1992-2017 data.

^c Percentages are age-adjusted to the 2000 US Standard Population (19 age groups - Census P25-1130) by 5-year age groups.

^d Cases diagnosed more than 25 years ago were estimated using the completeness index method (Capocaccia et. al. 1997, Merrill et. al. 2000).

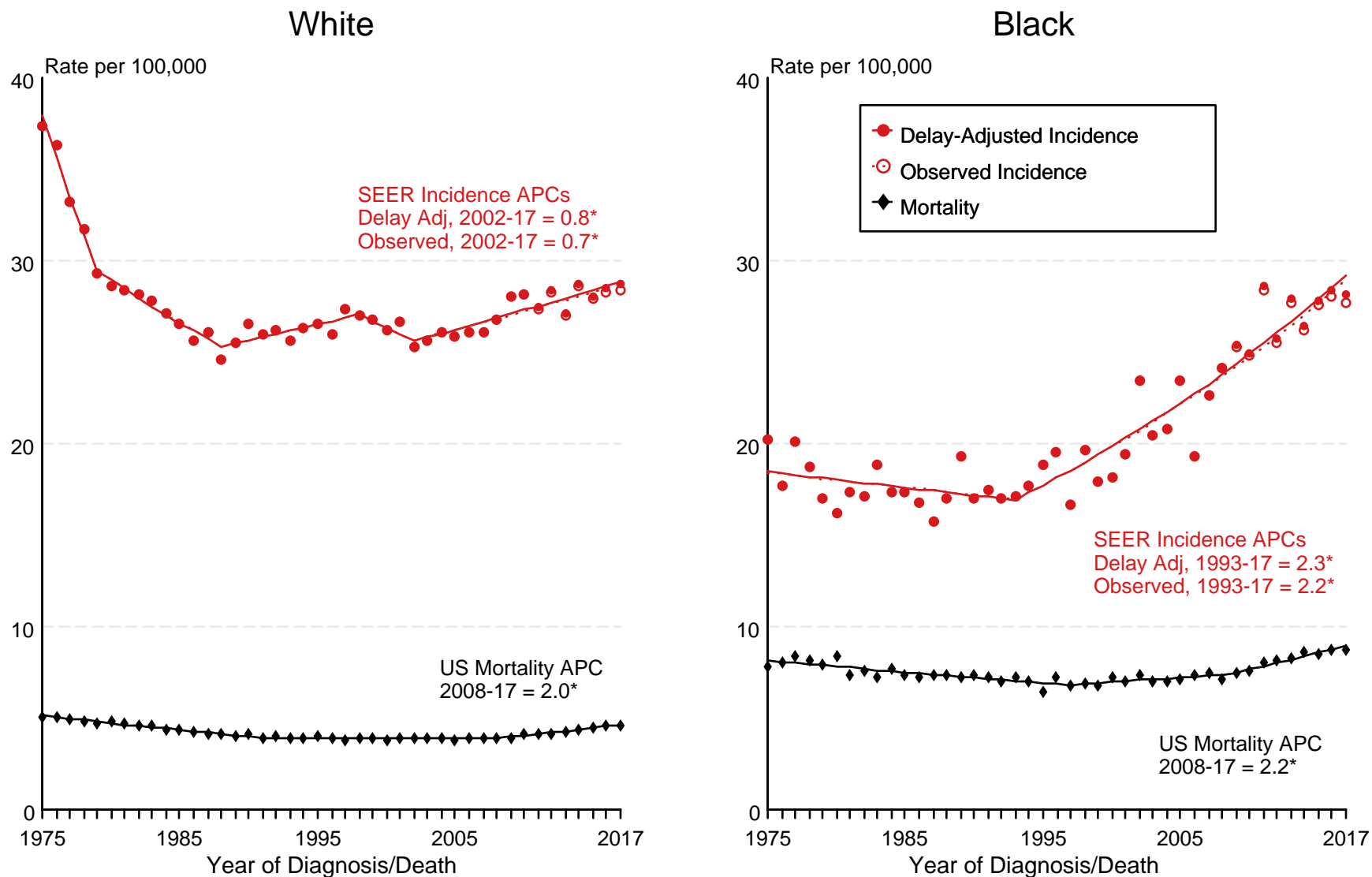
^e Complete prevalence is obtained by summing <=25 and > 25.

- Statistic not shown. Statistic based on fewer than 5 cases estimated alive in SEER for the time interval.

+ Not available.

Figure 7.1

SEER Observed Incidence, SEER Delay Adjusted Incidence and US Death Rates^a Cancer of the Corpus and Uterus, NOS, by Race



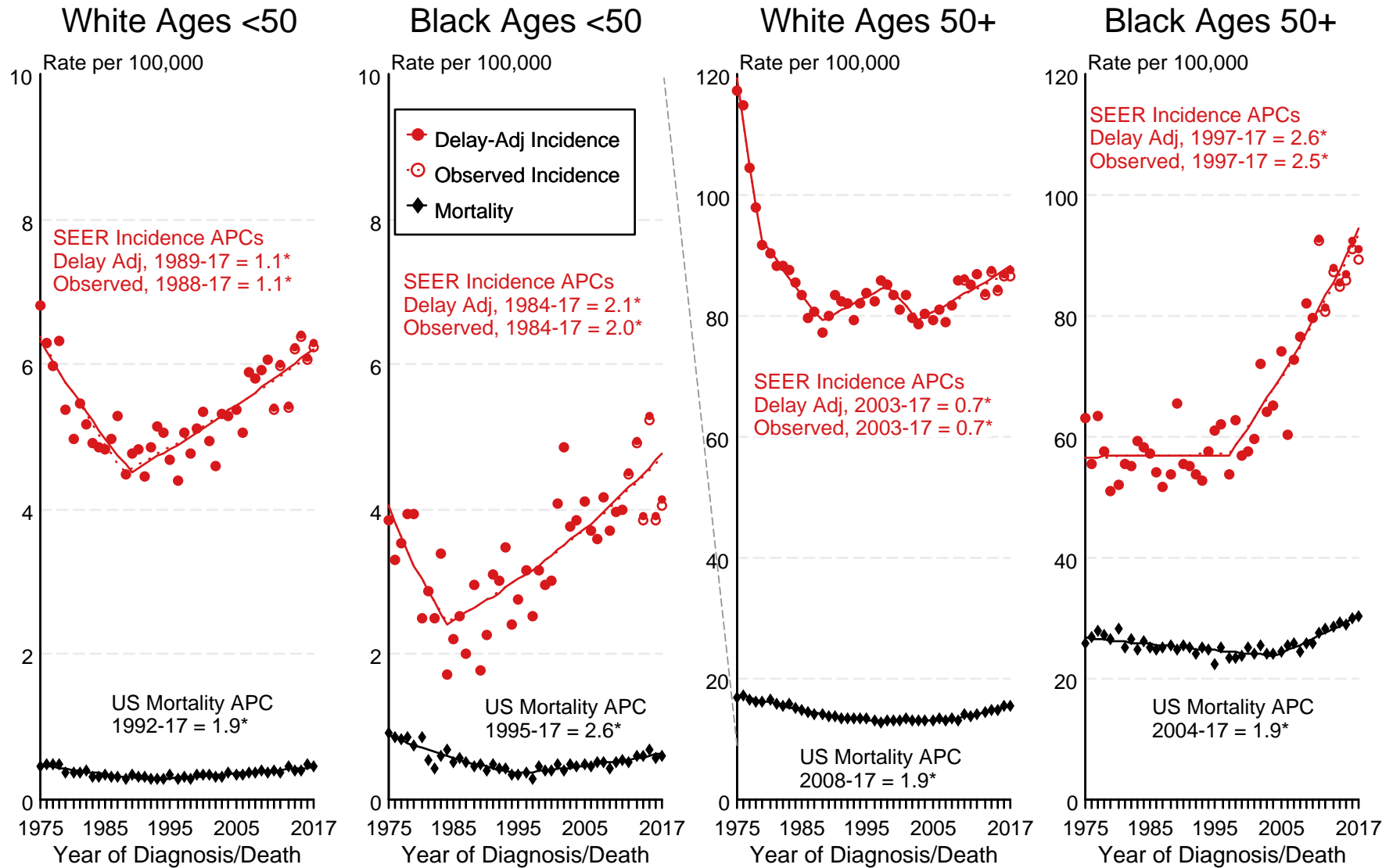
Source: SEER 9 areas and US Mortality Files (National Center for Health Statistics, CDC).

^a Rates are age-adjusted to the 2000 US Std Population (19 age groups - Census P25-1103).
 Regression lines and APCs are calculated using the Joinpoint Regression Program Version 4.8, April 2020, National Cancer Institute.
 The APC is the Annual Percent Change for the regression line segments. The APC shown on the graph is for the most recent trend.

* The APC is significantly different from zero ($p < 0.05$).

Figure 7.2

SEER Observed Incidence, SEER Delay Adjusted Incidence and US Death Rates^a Cancer of the Corpus and Uterus, NOS, by Age and Race



Source: SEER 9 areas and US Mortality Files (National Center for Health Statistics, CDC).

^a Rates are age-adjusted to the 2000 US Std Population (19 age groups - Census P25-1103).

Regression lines and APCs are calculated using the Joinpoint Regression Program Version 4.8, April 2020, National Cancer Institute.

The APC is the Annual Percent Change for the regression line segments. The APC shown on the graph is for the most recent trend.

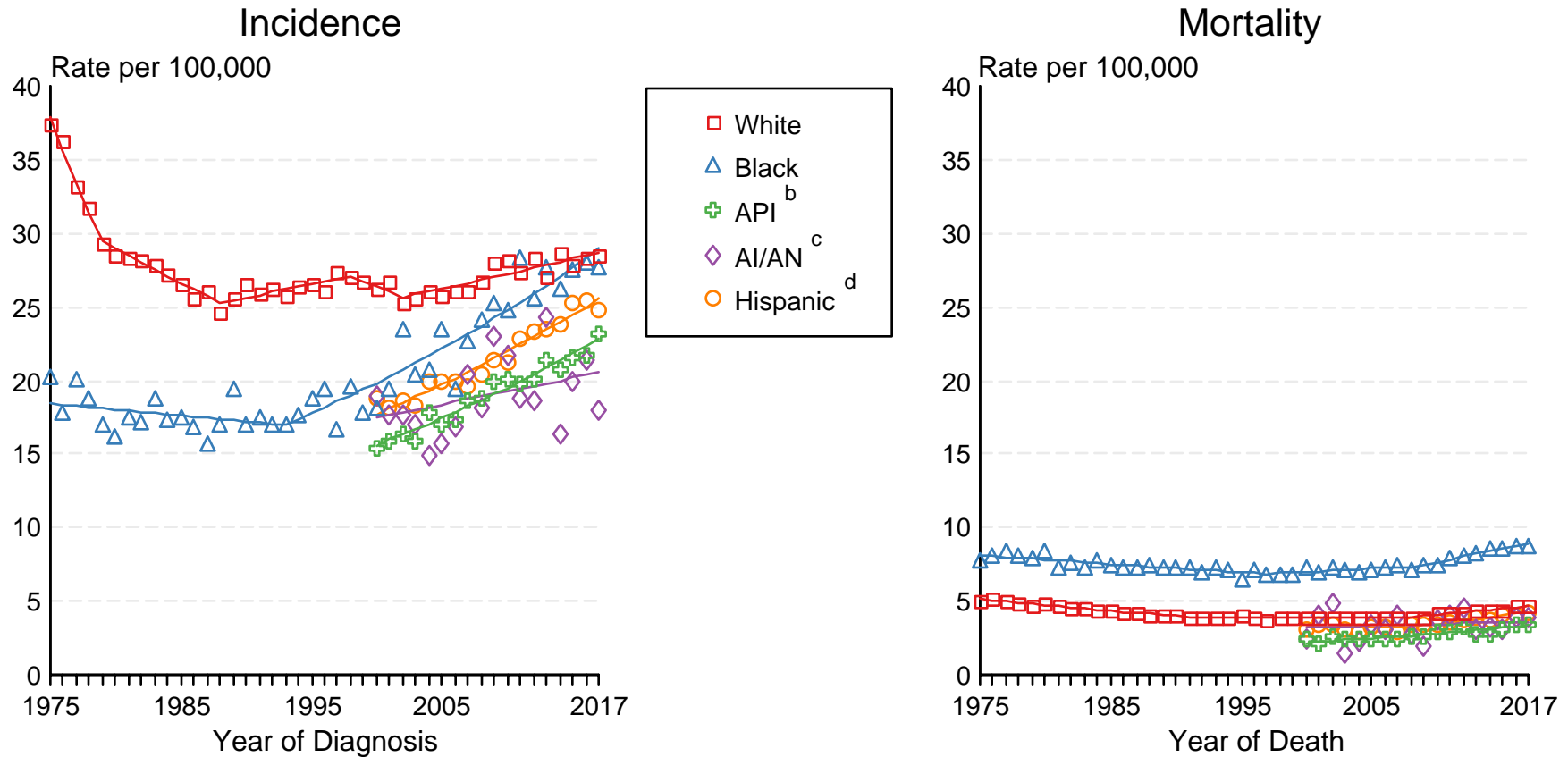
* The APC is significantly different from zero ($p < 0.05$).

Figure 7.3

SEER Incidence and US Death Rates^a Cancer of the Corpus and Uterus, NOS

Joinpoint Analyses for Whites and Blacks from 1975-2017

and for Asian/Pacific Islanders, American Indians/Alaska Natives and Hispanics from 2000-2017



Source: Incidence data for whites and blacks are from the SEER 9 areas (San Francisco, Connecticut, Detroit, Hawaii, Iowa, New Mexico, Seattle, Utah, Atlanta). Incidence data for Asian/Pacific Islanders, American Indians/Alaska Natives and Hispanics are from the SEER 21 areas (SEER 9 areas, San Jose-Monterey, Los Angeles, Alaska Native Registry, Rural Georgia, California excluding SF/SJM/LA, Kentucky, Louisiana, New Jersey, Georgia excluding ATL/RG, Idaho, New York and Massachusetts).

Mortality data are from US Mortality Files, National Center for Health Statistics, CDC.

^a Rates are age-adjusted to the 2000 US Std Population (19 age groups - Census P25-1103).

Regression lines are calculated using the Joinpoint Regression Program Version 4.8, April 2020, National Cancer Institute. Joinpoint analyses for Whites and Blacks during the 1975-2017 period allow a maximum of 5 joinpoints. Analyses for other ethnic groups during the period 2000-2017 allow a maximum of 3 joinpoints.

^b API = Asian/Pacific Islander.

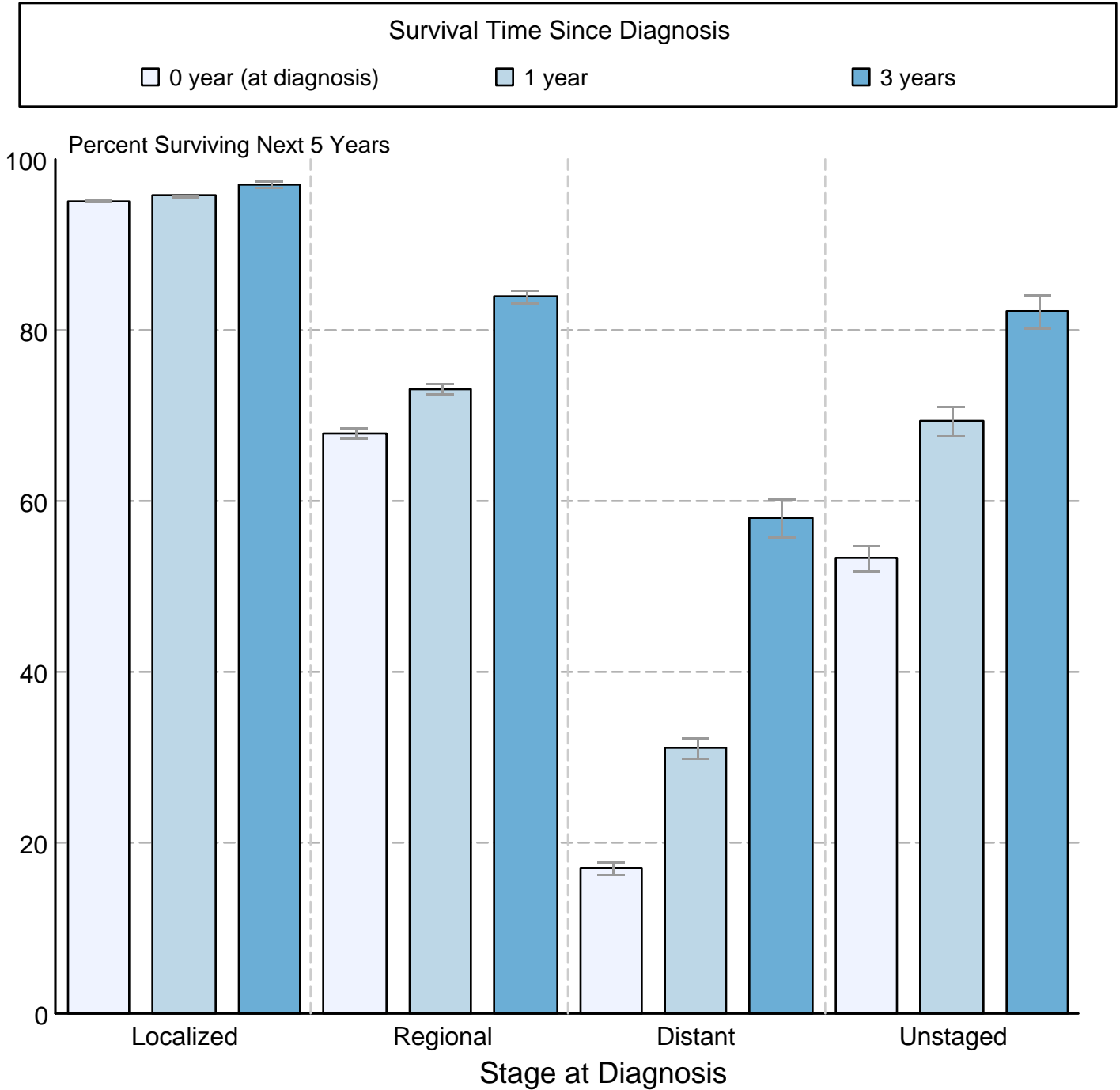
^c AI/AN = American Indian/Alaska Native. Rates for American Indian/Alaska Native are based on the Purchased/Referred Care Delivery Area (PRCDA) counties.

^d Hispanic is not mutually exclusive from whites, blacks, Asian/Pacific Islanders, and American Indians/Alaska Natives. Incidence data for Hispanics are based on NHIA and exclude cases from the Alaska Native Registry.

Figure 7.4

Cancer of the Corpus and Uterus, NOS 5-Year SEER Conditional Relative Survival and 95% Confidence Intervals

Probability of surviving the next 5 years given the cohort
has already survived 0, 1, or 3 years
2000-2015 by stage at diagnosis



Source: SEER 18 areas (San Francisco, Connecticut, Detroit, Hawaii, Iowa, New Mexico, Seattle, Utah, Atlanta, San Jose-Monterey, Los Angeles, Alaska Native Registry, Rural Georgia, California excluding SF/SJM/LA, Kentucky, Louisiana, New Jersey and Georgia excluding ATL/RG).

Percent surviving is not shown if based on less than 25 cases.

Confidence intervals are not shown if length of the confidence interval is greater than 5 times the standard error.